

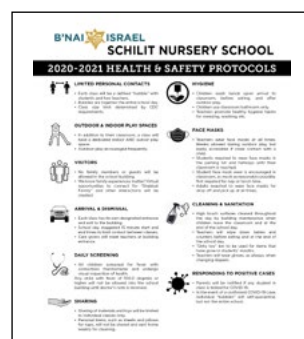
B'NAI ISRAEL SCHILIT NURSERY SCHOOL

2021–2022 SCHOOL YEAR FAQ

Thank you for your interest in B'nai Israel Schilit Nursery School! Should you have any questions beyond this FAQ, please be in touch with Rachel Siegel, Early Childhood Education Director, at rachels@bnaisraelcong.org.

1. What will school look like for the 2021–2022 school year? What are the COVID-19 precautions in place?

While we cannot yet determine the exact COVID-19 protocols for next school year, we do know the protocols that have been in place now and how we successfully opened school in Fall 2020. B'nai Israel has plenty of classrooms and recreational spaces, both indoors and outdoors, to ensure that we can adhere to whatever recommendations are in place for next school year, including remaining in “bubbles” if necessary. We anticipate that the circumstances may allow for a loosening of the current restrictions over time. For a snapshot of our COVID-19 protocols, please [click here](#).



2. Due to COVID-19, some nursery school programs were closed this year. What classes are being offered next year?

Here is a listing with description of all of our school's offerings that you can currently register for:

Baby and Toddler Shabbat Sing Playgroup (Children ages newborn–2-year-old with Adult) Fridays, 9:30 AM

This group is designed for adults and babies and toddlers to get out and about, play, socialize, sing, enjoy creative activities, share conversations and experiences together, while also celebrating Shabbat! There is no enrollment or commitment to attend each week. This playgroup currently meets strictly outdoors. Please join us and bring your friends! Email Rachel (rachels@bnaiisraelcong.org) for more information.



Tikvah Twos (Children 2-years-old between September 2021–January 2022) Tuesdays and Thursdays

**9:30–11:00 AM, September through December, accompanied by an adult
9:30–11:30 AM, January through June, unaccompanied by an adult**

Our Tikvah Twos program is a full year class designed for children turning two between September 2021 and February 2022. Children are acclimated to our nursery school through developmentally appropriate music, art, creative play, movement and Judaics. We help children make the transition from home to school with a familiar adult participating at the beginning of the school year. In January 2020, the students will attend class independently. The following year, the child will be eligible to register for one of our two-year-old classes.



Two-Year-Old Classes

We offer two options for our two-year-old children, who must be two years of age by September 1st:

3-day (Monday, Wednesday, Friday, 9:15 AM-12:30 PM)

5-day (Monday-Friday, 9:15 AM-12:30 PM)

Full-day option until 6:00 PM available every day for two year old classes

Through a variety of hands-on learning experiences and in a group setting, our twos explore their world and gain a sense of self-confidence in a nurturing environment. Our goal is to provide a trusting setting where children new to school will be empowered to develop independence and view themselves as capable. Opportunities for learned autonomy include washing their own hands, being responsible for their belongings and classroom materials, putting on their own coats, and pouring their own water as well as making choices and learning scripts that help them enhance their negotiation skills during play. Within the two's program we take time to introduce and familiarize the children with the basic concepts of Shabbat and Jewish Holidays. The two-year-old program is a wonderful time for them to begin developing their fine motor, social and cognitive skills through explorations that include sensory investigation, block building, imaginative play, art work, puzzles and games of matching and sorting.

Gross motor skills are enhanced on our playground and bike room by climbing, running, jumping and pedaling. We support and teach children to ask questions beginning at two years of age so that they can start to develop their critical thinking and problem solving skills.



Three-Year-Old Classes

Our three-year-old children attend our 5-Day program,

Monday-Friday, 9:15 AM-12:30 PM

Full-day option until 6:00 PM is available every day for three year old classes.

Our three-year-old children flourish through a curriculum that provides a multitude of opportunities for development in all areas, social, cognitive, gross and fine motor skills. Opportunities abound for hands on experiences with building, art, creative expression, sensory materials and beginning literacy skills. We expand on group work, focusing on the development of expressive language and social scripts. We continue to build on their understanding and experiences with Shabbat and other Jewish Holidays as the children participate in the many blessings, expand their knowledge about the history and learn about traditions and *mitzvahs* in everyday Jewish life. Giving the children access to many different materials allows them to learn as resourceful individuals with a natural sense of curiosity. Our three-year-old program is geared to help foster and further build their skills sets.



Four-Year-Old Classes

Monday-Friday, 9:15 AM-2:00 PM

Full-day option until 6:00 PM available every day for four-year-old classes.

All four-year-old children will engage in a challenging, enriching program. Activities will be exciting and innovative, promoting critical thinking, decision-making and strengthening skills in preparation for pre-academic success. Through a partnership with CESJDS our four-year-olds have the unique opportunity to explore Science, Technology, Engineering and Math in their STEM Innovations Lab. Throughout the year, our students join the residents of Landow and Cohen Rosen House for intergenerational arts and music as a tie in to the *mitzvot* of kindness (*gemilut hasadim*) and honoring others (*kavod*). Our children participate in Handwriting Without Tears which provides developmentally appropriate multi-sensory tools and strategies for handwriting, language and reading. Our four year old program prepares children educationally and socially for a smooth transition into Kindergarten.



3. What are your program hours?

We have flexible options so you can find the schedule that works best for your family. We will continue to offer our traditional program running from 9:15 AM–12:30 PM for half-day students and 9:15 AM–6:00 PM for full-day students. We are also enrolling for a Before Care option that begins at 7:30 AM.

Even as we make our plans for the fall, we understand that COVID-19 protocols may require slight adjustments to our schedule.

NEW For the 2021–2022 school year, we have extended the hours of the four year old program! The children will be here from 9:15 AM–2:00 PM every day. Consistency is very important for young children and four and five-year-old children are capable of having a longer school day. This will allow these children to experience the valuable social-emotional and academic learning with their peers for additional time throughout the week.

4. Will there be enrichment opportunities offered in the afternoon, like Children’s Choice, next year?

We are planning to have some type of enrichment options, with registration for the programs typically coming in the fall.

5. Who will the teachers be?

Our school is a Maryland Department of Education (MSDE) Child Development licensed program. We are proud of the fact that our staff and program fulfill the rigorous licensing requirements, and we are grateful for the wonderful teachers who make our school what it is. Our final enrollment needs for next school year will drive our teaching staff. We have a fabulous group of early childhood educators this year and we are in touch with all teachers who were unable to work this year due to COVID restrictions. We know we will have a stellar teaching staff for the 2021–2022 school year.

6. What is the payment schedule? When do I begin making payments?

Upon enrollment, you will be asked to make a \$75 (nonrefundable) application fee and a \$500 deposit. The rest of the payment schedule will begin on July 1, 2021 and finish by April 30, 2022. Our registration system allows you to tailor your own payment schedule.

7. If I put in a deposit, am I able to change my mind?

The \$500 deposit is 100 percent refundable by Friday, May 14, 2021 and 50 percent refundable by Tuesday, June 15, 2021. We are not able to provide any refunds after June 15, 2021 for withdrawal from school.

8. Is synagogue membership required to attend your school?

Synagogue membership is not required to attend the Schilit Nursery School although it can greatly enhance your experience. We hope that the Nursery School experience will be a springboard to a lifetime of fulfillment for your family in our congregational community, but membership is not required. Synagogue members also pay a discounted tuition rate. All Schilit Nursery School families are encouraged to participate in our Synagogue Membership Incentive Program which offers discounts off our B’nai Israel Synagogue membership at the following rates:

First Year – 90 percent synagogue membership discount
Second Year – 50 percent synagogue membership discount
Third Year – 25 percent synagogue membership discount

For any questions related to synagogue membership and costs, please contact Hal Ossman, B’nai Israel Executive Director, (hossman@bnaiisraelcong.org).

9. Will you be having camp this year? What will that look like?

We are so excited to be able to bring camp back this year! Camp will have two sessions that are three weeks in length and both a half and full day option will be available for both sessions. The first session will run from Monday, June 28–Friday, July 16. The second session will run from Monday, July 19–Friday, August 6. As you can see from our 2021–2022 school year calendar, we'll be transitioning to a more continuous calendar from September to September, including eight weeks of camp.



10. When can I register for camp?

Registration for camp will officially begin on Monday, March 1. If you have questions, please contact Rachel. We can't wait to have fun in the sun with all of the children. We're also looking forward to welcoming many of our incoming new children over the summer, too. Please stay tuned for more details!



Rachel Siegel, Early Childhood Director (rachels@bnaiisraelcong.org)

Nancy Goldberg, Schilit Nursery School Assistant Director (nancyg@bnaiisraelcong.org)

6301 Montrose Road, Rockville, MD 20852-4195
301-816-5578 | www.bnaiisraelcong.org/nurseryschool