

# B'NAI MITZVAH UNIVERSITY

A guide to support your journey.



Temple of Israel

A Reform Jewish Congregation

[www.templeofisrael.org](http://www.templeofisrael.org)





# Table of Contents

---

---

Note from the Director ..... 3

---

B'nai Mitzvah in Motion ..... 4

---

Mitzvah Project..... 5-6

---

Planning the Event..... 7-8

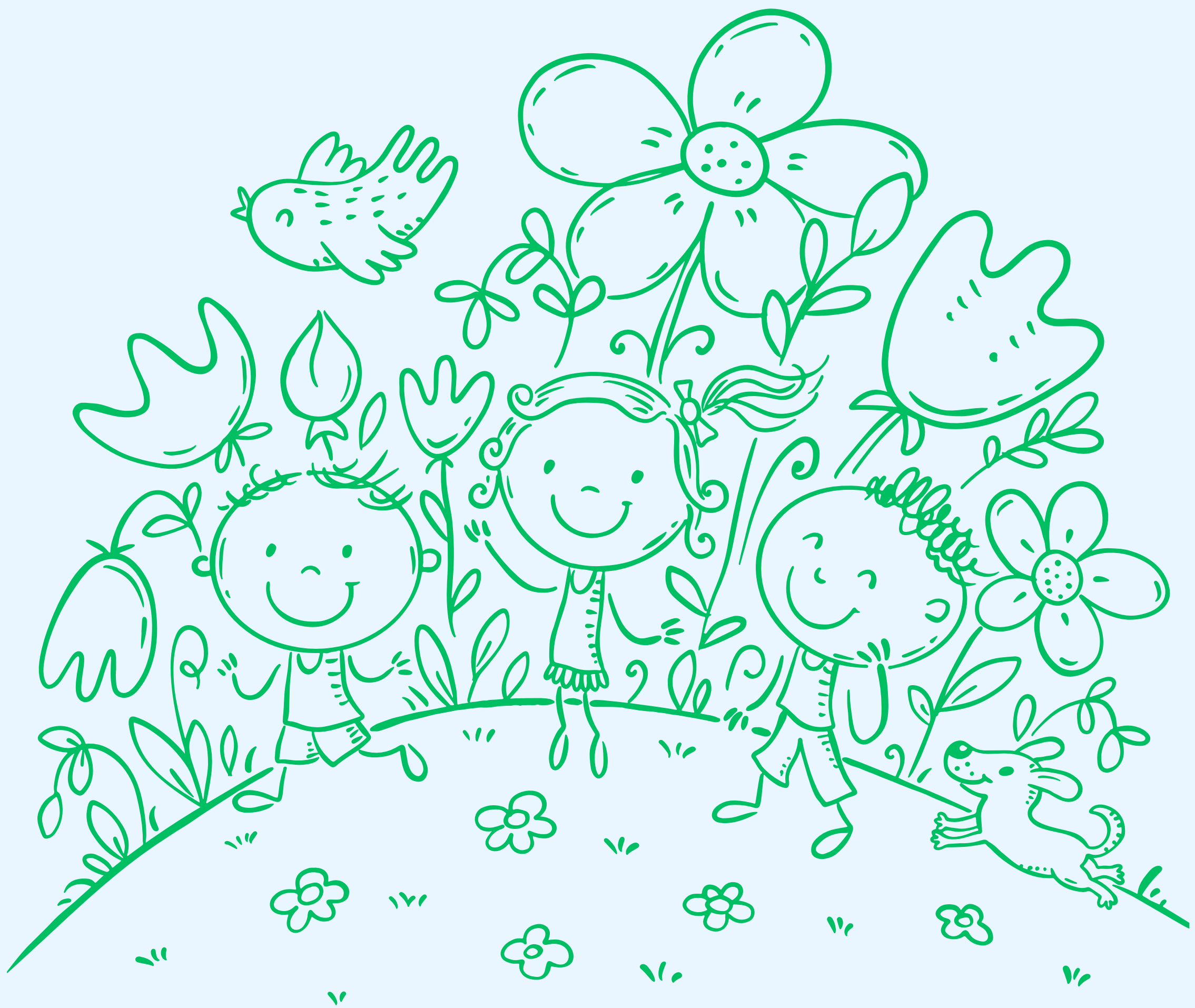
---

FAQ's ..... 9-11

---

My Notes..... 12

---



## NOTE FROM THE DIRECTOR

Welcome to your B'nai Mitzvah journey at the Temple of Israel (TOI). This is an exciting milestone for your family! We understand that along with the excitement, there are many questions. TOI is committed to providing your family with the necessary information to create a personalized experience that matches your needs and interests. These steps prepare students to lead our congregation in worship on the day of and beyond.

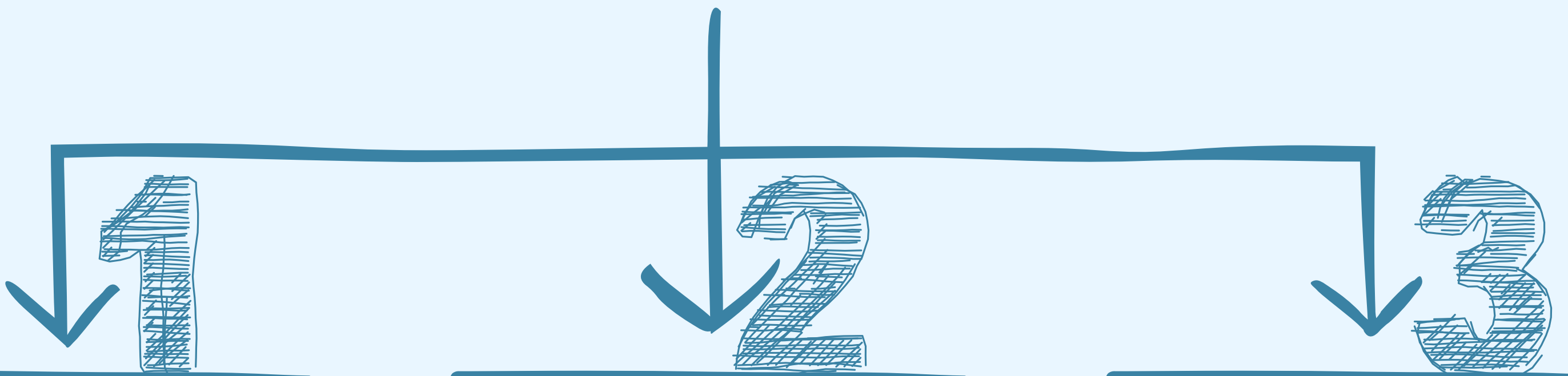
We encourage parents to engage in this individualized process. You can support your child(ren)'s efforts by helping with attendance and weekly responsibilities.



*Being a healthy and growing organization that leans on its Jewish values enables us to live out our mission.*



# B'NAI MITZVAH IN MOTION



Rabbi Rose will discuss the overall plan for studying, tutoring, ideas, and options for the service.

A schedule for B'nai tutoring and lessons will be outlined and detailed to meet your needs.

B'nai mitzvah families are encouraged to attend Shabbat services.



# TIKKUN OLAM MITZVAH PROJECT



TOI is committed to making the world a better place. We serve our community and others in the greater Greenville area by working with non-profit organizations. We encourage our B'nai Mitzvah students to find a cause they are passionate about and create an individualized service project. We hope that this is just the beginning of their journey to giving back to our community.

*"Small acts, when multiplied by millions of people, can transform the world."*

*--Howard Zinn*

# TIKKUN OLAM MITZVAH PROJECT IDEAS

Greenville Jewish Federation

Habitat for Humanity

Serenity Place

Supply Drive

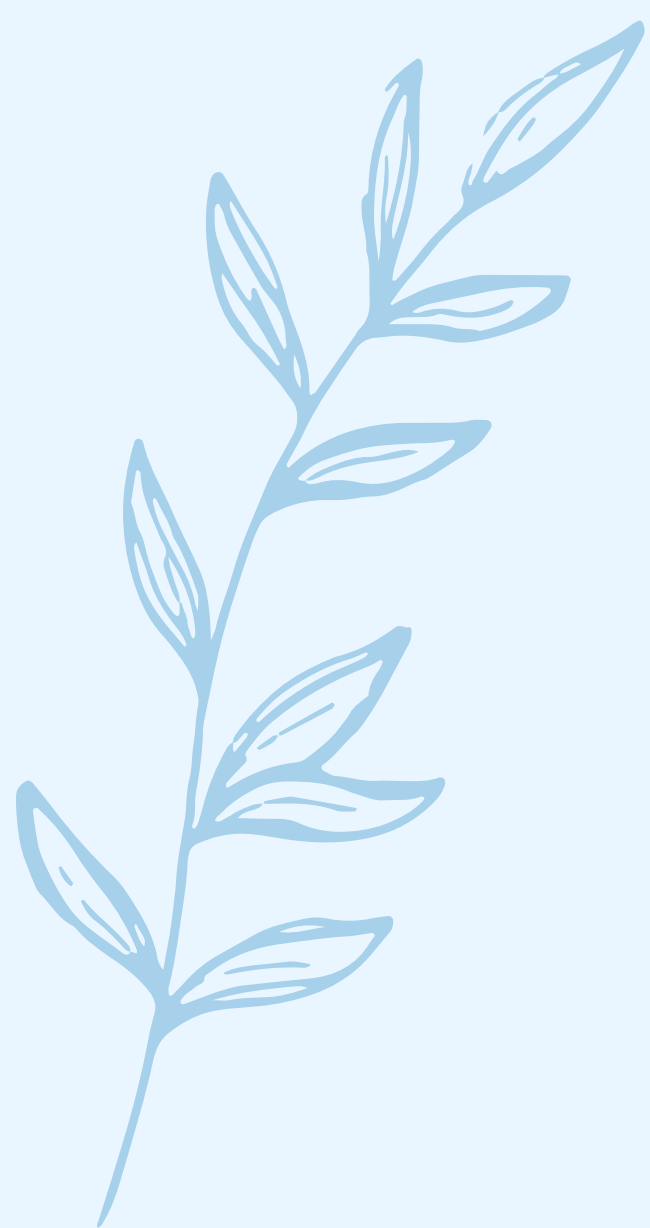
Project Host

Visit local VAs and Nursing Homes

Volunteer in Hospitals

Wellness Centers

Soup Kitchens



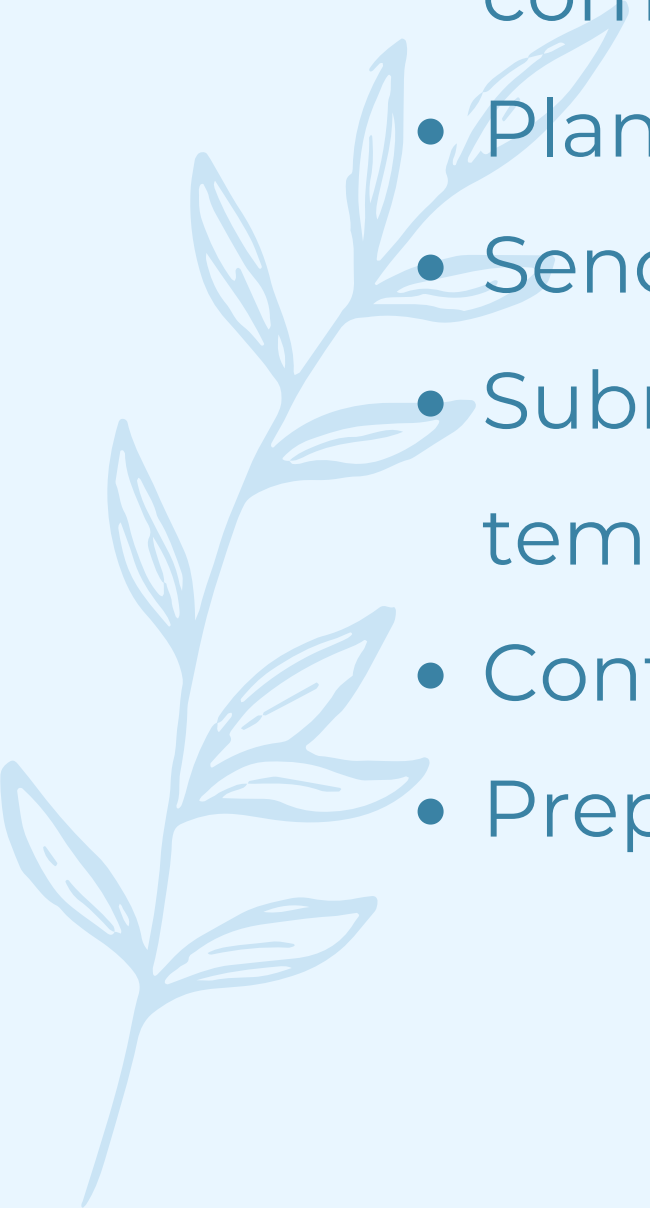


# PLANNING YOUR MITZVAH

This is a special moment in one's Jewish life cycle event for your child and family, and we are here to support you through this journey. Use this list to guide you on your journey.



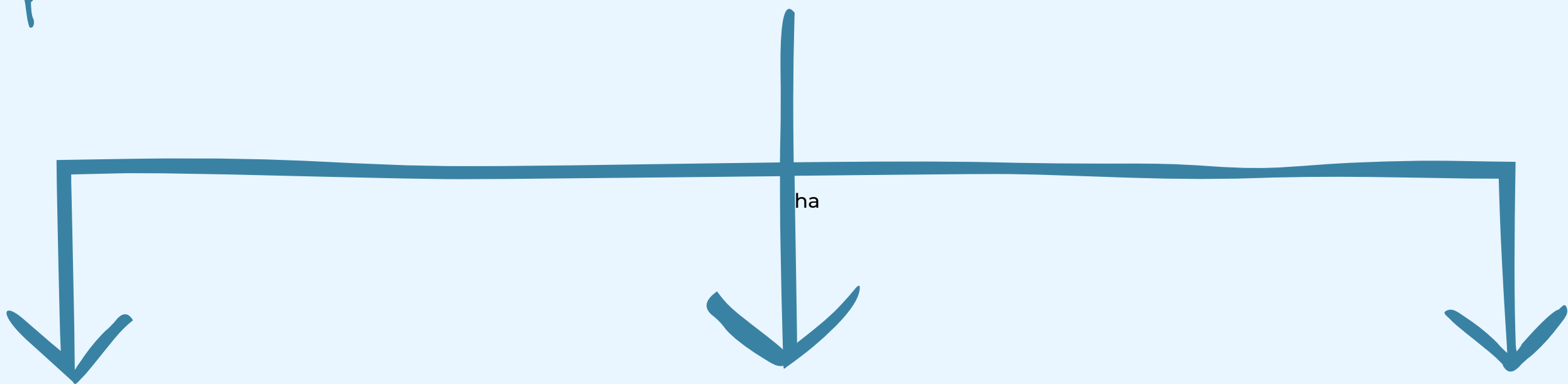
- Select a Date \_\_\_\_\_
- Send a save the date if applicable.
- The TOI Executive Assistant will reach out to you with logistical information throughout the year leading up to your child's B'nai Mitzvah to help you coordinate important information.
- Reserve an event space as soon as you know your date if you plan to host a celebration event.
- Select a time for the Saturday service and inform the temple office.
- If your celebration event will be at TOI, [CLICK HERE](#) to access the building use form.
- Family Meeting with Rabbi Rose. Rabbi Rose will contact you to initiate this meeting.
- After your family meeting, Rabbi Rose will work with you to schedule weekly tutoring.
- Brainstorm about a Mitzvah Project. This takes time and commitment.
- Plan oneg, any other event/celebration (lunch, reception, party).
- Send out invitations (email or paper)
- Submit your Board Member and Sisterhood representatives to the temple office.
- Confirm all rentals, venue, and vendor commitments.
- Prepare for the day of whatever that looks like for your family.



# EVENTS AT TOI



How do I know  
what to plan  
for at the  
temple?



You do not need to fill out the form if your luncheon (only) follows the service.

For private parties, complete the [form on the website](#)

If you are using TOI space we recommend hiring our custodian, Lloyd, for additional hours beyond his contracted hours.

For any additional time, Lloyd's rate is \$15/ hr.

If you plan to serve alcohol, you must obtain Host Alcohol Liability Insurance.

You can contact your insurance provider for information regarding this insurance or click [HERE](#) for more options

[CLICK to communicate with TOI's office](#)



# FAQ'S

WHAT ARE SOME WAYS  
I CAN SUPPORT MY  
CHILD FOR THEIR  
BAR/BAT MITZVAH?

WHO SHOULD BE  
INVITED TO THE  
BAR/BAT MITZVAH?

There is no right or wrong answer, and the decision of whom to invite is personal. Some people have large extended families and invite friends from school and work, while others plan for a more intimate event. We encourage you to invite all of the students to your child's B'nai Mitzvah class.

***Note:** Bar/Bat Mitzvah services are placed on our TOI calendar which means that Shabbat services on Friday night as well as Saturday's service are open to the congregation.*

WHAT SHOULD I  
PREPARE OR PLAN FOR  
THE FRIDAY NIGHT AND  
SATURDAY SERVICE?

On Friday night, the B'nai Mitzvah family hosts the oneg immediately following the service. Oneg can be as simple or elaborate as you like. Some typical items for the oneg include sweets, fruit and cheese trays, snacks, non-alcoholic drinks, tea, and coffee. Also, plan to provide two challahs for the bimah – one for Friday night and one for Saturday services. Be sure to order in advance from a bakery of your choice.

The temple staff helps set up and clean up for the event, and you are responsible for communicating and organizing the details with the TOI staff.

WHAT SPECIAL ITEMS  
DO I NEED TO PREPARE  
FOR THE SATURDAY  
SERVICE?

Rabbi Rose will advise you on this. In general a tallis and or yarmulke for the Bar/Bat Mitzvah child and family members or special friends who will participate in the service.

Remarks from parents and a board member and a sisterhood representative for the Saturday service.

Programs and congregation yarmulkes are optional, yet offer those who are not familiar with the details to help them navigate and engage with the service. We can provide examples if you are interested.



# FAQ'S

## WHAT ARE MY OPTIONS FOR SERVICES THAT MY CHILD LEADS?

There are five (5) options you and your child can choose from. When meeting with the Rabbi, you will discuss those options and variations. An individual plan that works best for you and your family will be decided and the details will be ironed out within a few weeks of your first meeting.

## WHO SHOULD BE INVOLVED IN THE SERVICE?

Family members, whether Jewish or not, are welcome and encouraged to be a part of the service(s).

## WHAT ARE SOME OF THE COSTS I SHOULD PLAN FOR?

All B'nai Mitzvah students pay a one-time \$400 fee in addition to Religious School tuition at the beginning of the 7th-grade year. This fee covers private tutoring with Rabbi Rose, personal prayer book and materials, and building use, staff, and security for public events (Friday night service, oneg, and Saturday services). Private events are subject to additional fees for building use, security, and staff.





# FAQ'S

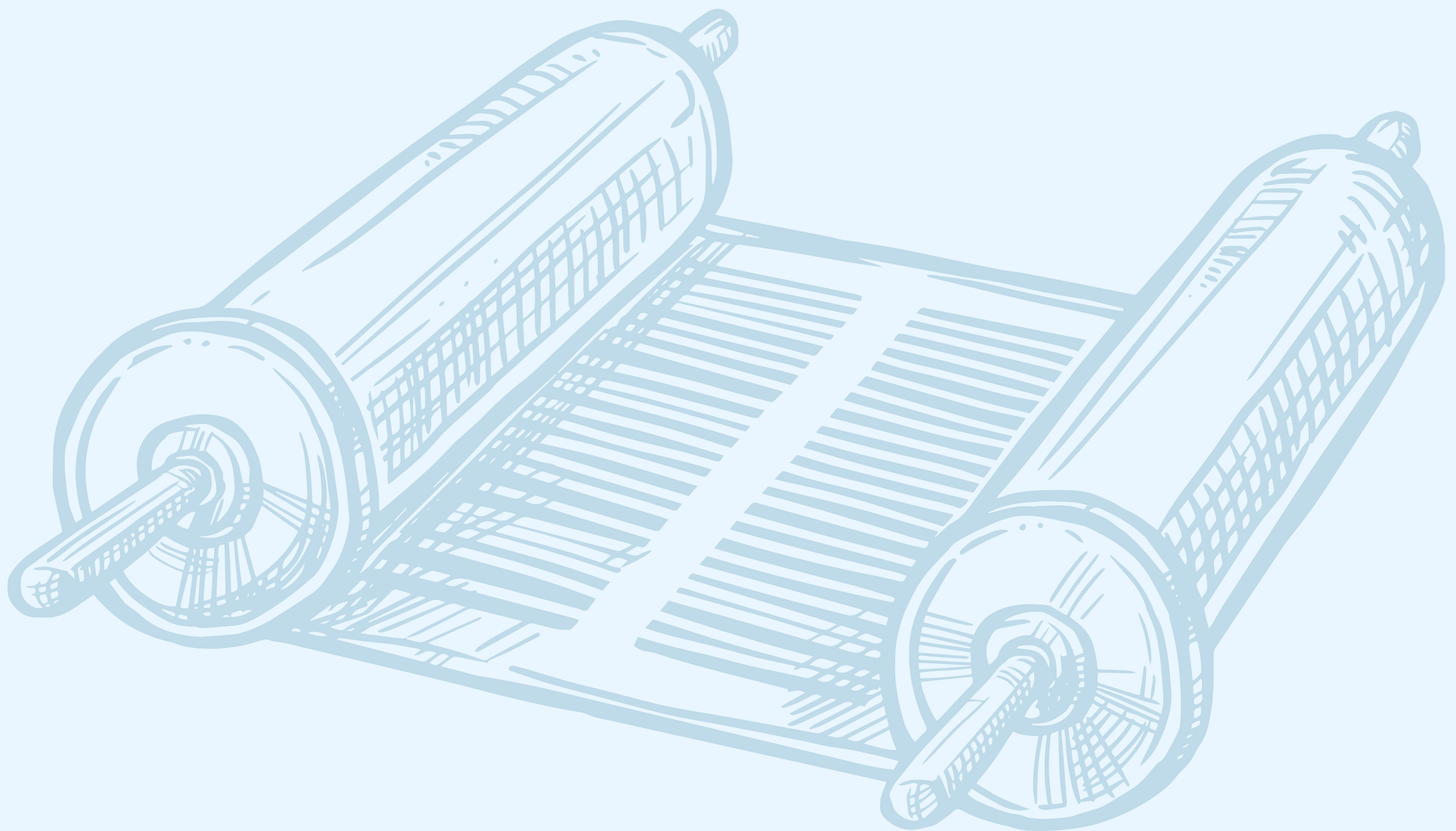
## WHAT ARE THE CELEBRATION OPTIONS?

Just like the guest list, this is also personal and there is no right or wrong way to celebrate! If you would like suggestions, reach out to temple members. They will be happy to share ideas with you.

*Reminder: Most services are open to all congregants. Please take this into consideration when planning.*

## ARE THERE RESTRICTIONS ON FOOD AND DRINK?

We encourage kosher style and ask that you do not include pork and shellfish. If you plan to have alcohol, TOI can work with you and your vendor to obtain additional insurance. [CLICK HERE](#) for more information.



Notes



A series of horizontal lines for writing, consisting of 10 evenly spaced lines across the page.