



2023 HIGH HOLY DAYS

5784 CONGREGATION B'NAI ISRAEL

Shalom,

Our tradition reminds us not only to be aware of the challenges in the world, but also to seek out ways to fix what is broken. In recent years, we have looked at the aspects of the world that trouble us and have strengthened our commitment to *tikkun olam*: helping refugees and immigrants, the homeless and the hungry; fighting for racial and gender equality both in our country and in Israel; and strengthening relationships across lines of culture, race, and religion with other Sacramento organizations. All as we continue to gather to celebrate life cycle events and holidays, and to engage in youth and adult education.

Now more than ever, we need to come together as a community and demonstrate leadership that will put us, and the generations to come, on a more secure footing. We are so proud that our congregation continuously stands for what is right and just. We are grateful that our congregation is not only a safe haven for ourselves, but also serves others in our broader community.

We think of our congregation as an extended family. As with any family, we must constantly make decisions about how to spend our limited resources. Transparency is key — we want you all to know where our money comes from and how we spend it. The following pages provide a snapshot of our revenues, expenditures, the overall direction of our budget, and some projections for future years. The back page provides information on what you can do to help.

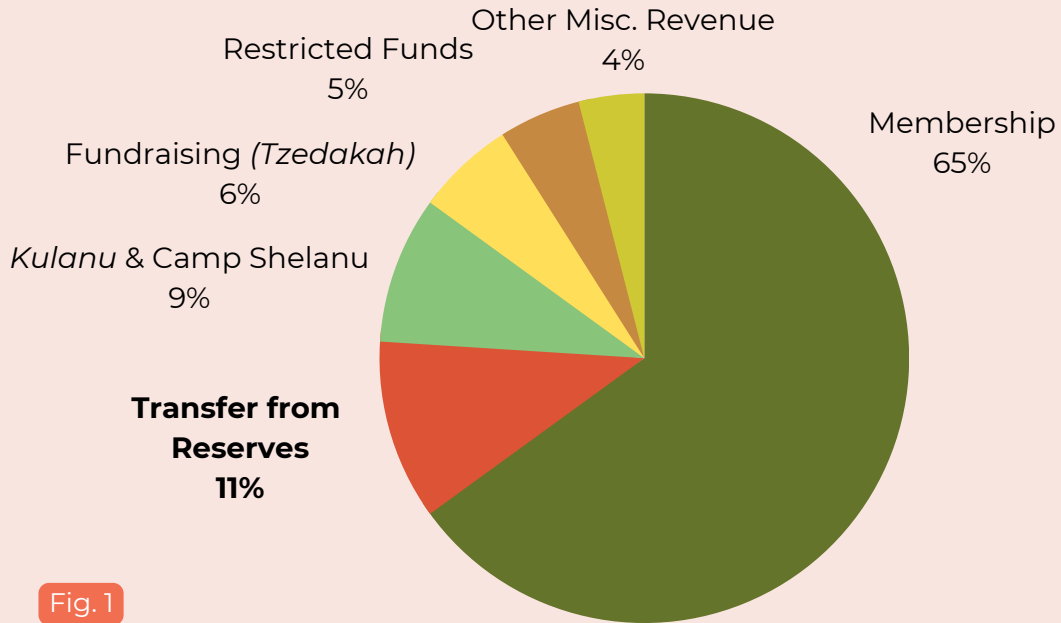
We look forward to hearing your opinions via a survey this fall to ensure that we are working together to safeguard our future. Please contact either of us with your questions and thoughts.

Shanah tovah.

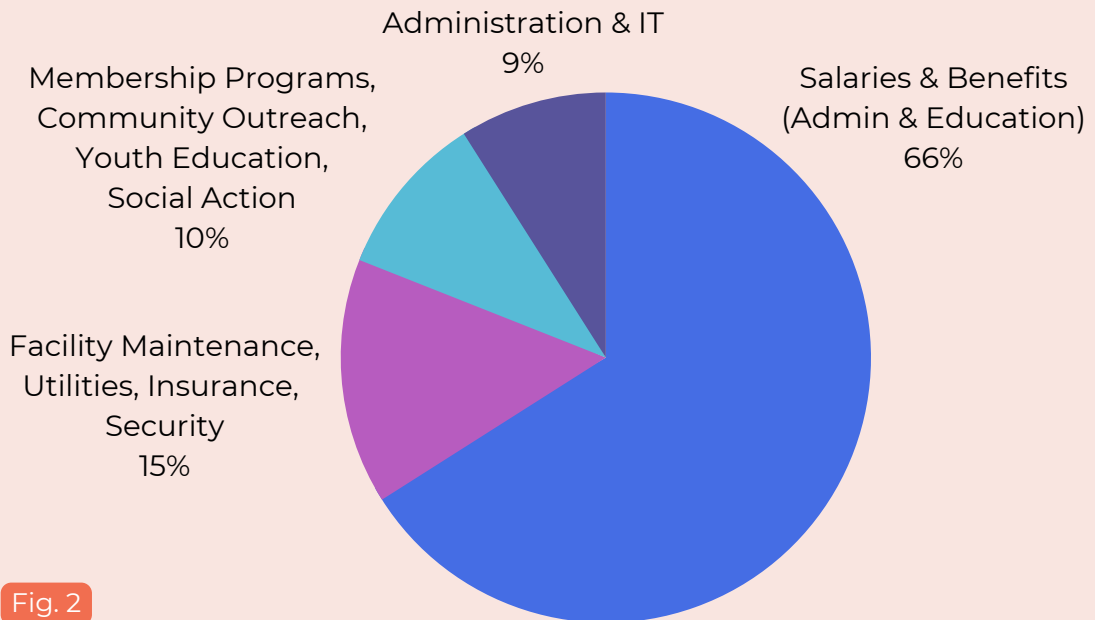
Jay Schenirer, President
jay@capitolimpact.org

Rabbi Mona Alfi
RabbiAlfi@bnais.com

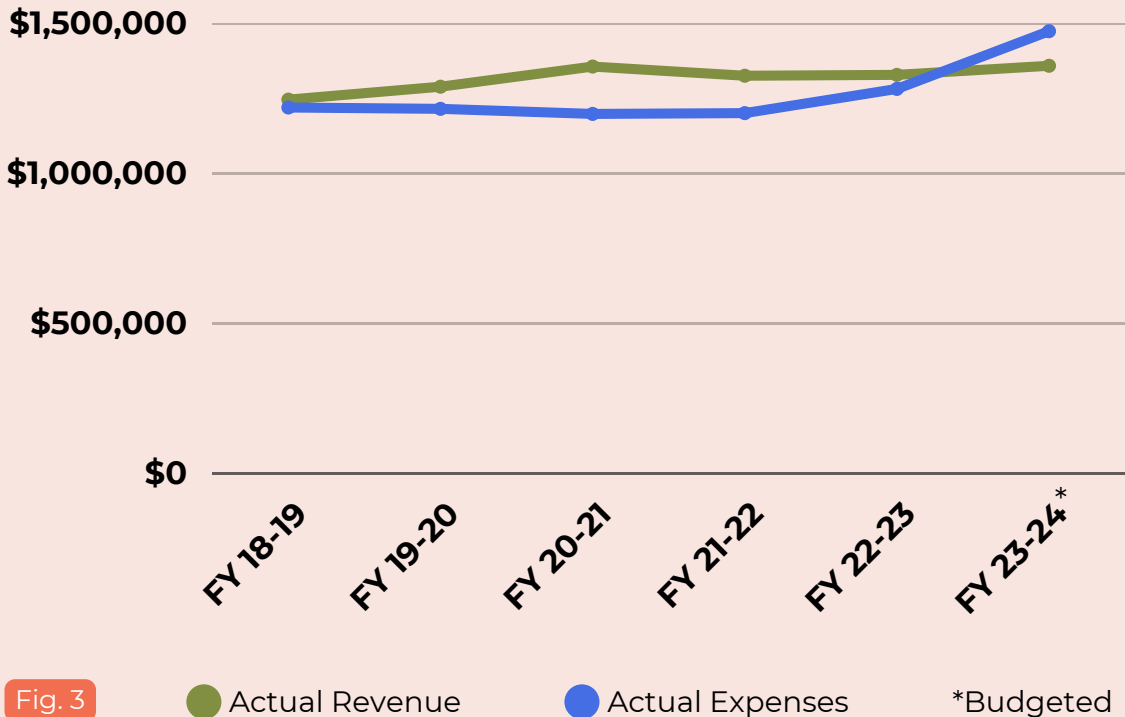
FY 2023–2024 BUDGET REVENUE



FY 2023–2024 BUDGET EXPENSES



5 YEAR TREND: REVENUE AND EXPENSES



CBI's operating costs, just like all of our household expenses, have increased substantially over the last two years. Inflation projections suggest that our operating budget will further increase by hundreds of thousands of dollars in the coming decade.

Membership commitments, while critical to our operations, have never covered our operating expenses. This is not unique to CBI — it's a reality for nearly all synagogues. In fact, when compared to congregations across the country, CBI fares better than its peers in terms of percentage of revenue generated through membership.

The challenge for us is how to reliably cover our expenses without depleting our Reserve Funds (see Fig. 1), so that we can sustainably maintain the staff, programming, and *tikkun olam* efforts our community expects.

We need our entire community to come together to meet the moment. We will address this budget challenge only with your collective support.

GIFT OF TZEDAKAH

Several years ago, we launched the *Gift of Tzedakah*, a program to strengthen the culture of philanthropy within our congregation. So many of you have answered that call every year, making a gift over and above your membership. And for that, we are grateful.

Today we are asking everyone to commit to a monthly recurring *Gift of Tzedakah* so that we can build a reliable revenue stream to sustain the congregation now and into the future. For some of you, that monthly recurring gift may be the cost of a cup of coffee, for others it might be the cost of a family trip to the movies, and for others it might be a more significant amount. We recognize that everyone's financial situation is different. What we ask is that you consider CBI as part of your regular giving, and think about what you can stretch to contribute on a monthly basis.

Congregation B'nai Israel has played a critical role in all of our lives and our broader community, and can do even more in the future. Thank you for your generosity and help in sustaining CBI.

916.446.4861 | www.cbisacramento.org | inquiry@bnais.com

BECOME A CBI MONTHLY SUSTAINER

To make a recurring monthly *Gift of Tzedakah*, please scan the QR code, visit our webpage (cbisacramento.org/form/gift-of-tzedakah-fy23-24), or complete this form.

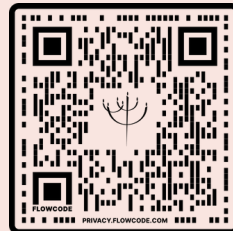
Name: _____

Phone: _____

Email: _____

Completed forms may be placed in the designated boxes in the foyers, or dropped off / returned by mail to the CBI office.

*Questions? Please contact Daniel Kaufman at inquiry@bnais.com.
Todah rabah!*



I/We would like to make a monthly gift of:

- | | |
|---------------------------------------|--------------------------------|
| <input type="checkbox"/> \$18 | <input type="checkbox"/> \$36 |
| <input type="checkbox"/> \$54 | <input type="checkbox"/> \$108 |
| <input type="checkbox"/> \$180 | <input type="checkbox"/> \$360 |
| <input type="checkbox"/> Other: _____ | |