



# Beth Or Spotlight

September-October 2022 | Volume 66, Issue 1 | Elul-Tishrei-Cheshvan





## September Worship Schedule

### Friday, September 2 – Shabbat Shoftim

6:30 pm Family Shabbat Worship in the  
Gitlin Sanctuary – *Live Stream*

### Saturday, September 3

11:00 am Shabbat Worship

### Friday, September 9 – Shabbat Ki-Tetze

7:30 pm Shabbat Worship in the Gitlin  
Sanctuary – *Facebook Live & Live Stream*

### Saturday, September 10

9:00 am Shabbat Worship with the Bar  
Mitzvah of Xavier Montgomery Berman,  
son of Joshua and Rachael Berman

11:00 am Shabbat Worship with the Bar  
Mitzvah of Beck Rosenthal, son of Chad  
and Jessica Rosenthal – *Live Stream*

### Friday, September 16 – Shabbat Ki-Tavo

7:30 pm Shabbat Worship in the Gitlin  
Sanctuary with Cantorial Soloist Jody  
Kidwell – *Facebook Live & Live Stream*

### Saturday, September 17

9:00 am Shabbat Worship with the  
Bat Mitzvah of Rachel Caldeira Harris,  
daughter of Marc and Sione Harris

11:00 am Shabbat Worship with the B'not  
Mitzvah of Emma Jane Rucker and  
Abigail Claire Rucker, daughters of David  
and Jill Rucker – *Live Stream*

6:30 pm Selichot Program (RSVP Required)

8:30 pm Selichot Worship Service

### Friday, September 23 – Shabbat Nitzavim

7:30 pm Shabbat Worship in the Gitlin  
Sanctuary – *Facebook Live & Live Stream*

### Saturday, September 24

11:00 am Shabbat Worship

### Sunday, September 25 – Erev Rosh Hashanah

8:00 pm Erev Rosh Hashanah Worship

### Monday, September 26 – Rosh Hashanah

9:00 am Early Rosh Hashanah and Youth  
Worship

11:30 am Tashlich on the Flitter Family  
Terrace

12:30 pm Late Rosh Hashanah Worship

2:30 pm Tashlich on the Flitter Family  
Terrace

3:00 pm Family and Tot Rosh Hashanah  
Worship

4:00 pm Tashlich on the Flitter Family  
Terrace

### Tuesday, September 27 – 2nd Day Rosh Hashanah Service

10:00 am 2nd Day Rosh Hashanah Worship

### Friday, September 30 – Shabbat Vayelech

7:30 pm Shabbat Worship Service in the  
Gitlin Sanctuary – *Facebook Live & Live  
Stream*

## October Worship Schedule

### Saturday, October 1

11:00 am Shabbat Worship

### Tuesday, October 4 – Kol Nidre

8:00 pm Kol Nidre Worship

### Wednesday October 5 – Yom Kippur

9:00 am Early and Youth Yom Kippur  
Worship

11:30 pm Study Session #1

12:00 pm Late Yom Kippur Worship

1:00 pm Study Session #2

2:45 pm Family and Tot Yom Kippur  
Worship

2:45 pm Study Session #3

4:00 pm Afternoon Yizkor, Neilah  
Worship and Break the Fast

### Friday, October 7 – Shabbat Ha'azinu

6:30 pm Family Shabbat Worship in the  
Gitlin Sanctuary – *Live Stream*

7:45 pm Kabbalat Shabbat in the Gitlin  
Sanctuary – *Facebook Live & Livestream*

### Saturday, October 8

9:00 am Shabbat Worship with the Bat  
Mitzvah of Sophia Carolyn Gaffney,  
daughter of Andrew and Dana Gaffney

11:00 am Shabbat Worship with the  
B'nai Mitzvah of Zoe Claire Zielinski,  
daughter of Jen and Scott Zielinski and  
Daniel Joseph Iris, son of Ariel and Julia  
Iris – *Live Stream*

### Sunday, October 9 – Erev Sukkot

5:00 pm Dinner in the Goldstein Sukkah  
(RSVP Required)

5:45 pm Erev Sukkot Worship with CECE  
Consecration and Lulav, Etrog & Song

### Monday, October 10 - Sukkot

9:00 am Sukkot Worship in the  
Sanctuary with Brunch to follow

### Friday, October 14 – Shabbat Sukkot

5:30 pm Sushi, Sake, Sukkah & Soccer  
(RSVP Required)

7:30 pm Shabbat Worship in the Gitlin  
Sanctuary – *Facebook Live & Live  
Stream*

### Saturday, October 15

11:00 am Shabbat Worship with the  
Bat Mitzvah of Alexis Sharon Fredd,  
daughter of Scott and Stefanie Fredd –  
*Live Stream*

### Sunday, October 16 – Erev Simchat Torah

6:30 pm Erev Simchat Torah Worship  
with Consecration in the Gitlin  
Sanctuary

### Monday, October 17 – Simchat Torah

9:00 am Simchat Torah Worship & Yizkor  
with Brunch to follow

### Friday, October 21 – Shabbat Bereshit

7:30 pm Shabbat Worship in the Gitlin  
Sanctuary – *Facebook Live & Live Stream*

## Saturday, October 22

9:30 am Torah Study

11:00 am Shabbat Worship with the  
Bat Mitzvah of Sarah Madison Pliner,  
daughter of Brad and Debbie Pliner

## Friday, October 28 – Shabbat Noah

7:30 pm Sisterhood Shabbat Worship in  
the Gitlin Sanctuary – *Facebook Live &  
Live Stream*

## Saturday, October 29

9:30 am Torah Study

11:00 am Shabbat Worship with the Bar  
Mitzvah of Nate Zackary Pinchuk, son of  
Tom Pinchuk and Tanya Vishnevsky

## Table of Contents

From the Rabbi's Desk/ Rabbi Gregory S. Marx.....	1
President's Corner/Gwen Silverstein .....	2
From the Rabbi's Desk/ Rabbi Jason Bonder .....	3
From Cantor Jaime Murley .....	4
From Executive Director, Amy Abrams.....	5
Religious School News & Important Dates.....	6
Shmear Café Reopens .....	6
Early Childhood Education.....	7
Youth Engagement.....	8
Member Engagement.....	9
Lulav & Etrog Sale .....	9
B'nai Mitzvah Projects.....	10-11
Social Action.....	12
Social Justice .....	13
Get Connected Business & Career Network .....	14
Brotherhood .....	15
Sisterhood .....	16
Events.....	17-19
Celebrate Your Simcha .....	21-22
Chai Lights/ Flower Donations .....	23
Memorials & Contributions.....	24-25

# Ulai Yesh Tikvah

Rabbi Gregory S. Marx, Senior Rabbi

Let me offer a blessing for the New Year with a Hebrew phrase, *Ulai Yesh Tikvah*/perhaps there is hope. These words were penned by the prophet, Jeremiah in the book of Lamentations. Lying in the wake of the destruction of Jerusalem in 586 BCE, Jeremiah tells his people in 3:29, “even if you are lying in the dust, *Ulai Yesh Tikvah*, perhaps there is hope.”

When Abraham is negotiating with God to save Sodom and Gomorrah, from destruction he says “perhaps there are ten righteous people” *“Ulai sham...esrim.”* Don’t destroy the good along with the bad. Sadly, they were not to be found, but Abraham believed in the possibility.

The prophet, Jonah is told by God to go to Nineveh, but instead he takes a ship



Rabbi Gregory S. Marx

## From the Rabbi's Desk

in the opposite direction. A storm erupts and it gets so bad that the sailors are urgently crying out to their gods for help. Meanwhile Jonah is asleep below deck. The captain finds cries out: “what are you doing sleeping? Get up and cry out to your God! *Ulai*/perhaps your God will be mindful of us and we will not perish?” *Ulai*/perhaps there is a caring God and we are not alone in the tempest.

“Perhaps” means that we will consider that as bad as things are, maybe they can improve. Perchance our worst fears will not come to pass, and something unpredictably good will arise instead.

“Yesh” in Hebrew means “to be.” It could also mean.... “there it is and here we are.” We need to restore our faith in ourselves and in our potential to improve the world. We can be filled with doubt, uncertainty, despair or lack of faith and this will drag us down. So, this season calls us to think harder, and see more, to believe despite all the reasons not to. “Yesh”...means I exist. I am here and of value.

We must try to see the beauty inside, and judge ourselves with compassion. The Hebrew word for compassion, is *rachamim*, which is rooted in the Hebrew word for womb, *rechem*. In other words, try to look at yourself the way your devoted mother looks or looked upon you. We should endeavor to hold ourselves like a mother holds a baby.

Psychologist Dr. Edith Eger, who is an expert on PTSD and an Auschwitz survivor, teaches that *tikvah*/hope is both: “the awareness that suffering, however terrible, is temporary; and the curiosity to discover what happens next.”

She knows that suffering is temporary and that tomorrow is always another day for growth and discovery. She also teaches that “Hope allows us to live in the present instead of the past, and to unlock the doors of our mental prisons.”

When we are frightened, when we are sure the worst is yet to come, when we are trapped in our own chains of doubt, hope seems like a far distant shore, but with eyes open and focused on *ulai yesh, tikvah*, hope can naturally emerge.

We may struggle with depression, financial concerns, failing health or family trouble. We can, at times, get overwhelmed, but *Ulai, yesh Tikvah*, we must never give up or in. It can get better. Hope can grow.

Every Rosh Hashanah, the moon is hidden from view. Not only is it *Rosh Hashanah* it is also *Rosh Chodesh*, the new moon. But over the course of the month the moon will slowly be revealed like our life in the new year. The mystery is in how we will respond. We move from a new (darkened) moon to a full moon on *Sukkot*.

*Ulai Yesh Tikvah.*

May your new year be filled with hope.

---

\*Thanks to Rabbi Amichai Lau-Lavie & Melila Helner Eshed for inspiring the idea of *Ulai Yesh Tikvah*

# Summing Up 5782: Feeling Proud and Grateful

Gwen Silverstein, Beth Or President



Gwen Silverstein

It seems hardly possible that we are weeks away from the beginning of our fall holiday season. Over this summer that has seemingly run away from us, the clergy and lay leaders have been implementing online High Holy Days ticketing, monitoring the COVID situation, and kicking off our search for our next Executive Director as Amy Abrams will be retiring next June after ten years as our Executive Director/Chief Operating Officer. She will be greatly missed by our staff and the whole congregation. Topic for another article, stay tuned!

We have many things to be proud of and grateful for over this past year. As a result of many generous donors over many years, the mortgage on our building was fully paid off. In recognition of the generosity of the Flitter family's gift, we were so pleased to rename the patio on our lower level as The Flitter Family Terrace. Our Give Once Campaign continues to grow with more than 30 families participating. The spring fundraiser in honor of Cantor and Lori Green was a success. The parents in our early learning center organized and hosted awesomely successful fundraisers generating \$20,000+ for the preschool. Bingo was in-person after a two-year hiatus with 250+ attendees. 64 families joined our congregation in this past year, which is a blessing. Our Brotherhood and Sisterhood hosted a cadre of events which deepened our bonds as a community through social events and by giving back to our local community. Our C4C:Clubs for Community special interest clubs have also blossomed after beginning this past fall and they continue to evolve.

We have so much to be proud of and grateful for as a *kehillah kedosha*. I am looking forward to what's to come in 5783, including leadership opportunities due to upcoming retirements, guest Cantors and Soloists to expand our musical palates, and save the date for our Spring Fundraiser on April 22, 2023. In the spirit of the High Holy Days, I wish everyone a peaceful period of atonement and an easy fast!

*L'Shana Tova!*

## September/October Candle Lighting

Friday, September 2 • 7:12 pm	Friday, October 7 • 6:15 pm
Friday, September 9 • 7:01 pm	Friday, October 14 • 6:04 pm
Friday, September 16 • 6:49 pm	Friday, October 21 • 5:54 pm
Friday, September 23 • 6:38 pm	Friday, October 28 • 5:45 pm
Friday, September 30 • 6:26 pm	





*Rabbi Jason Bonder*

## From the Rabbi's Desk

**Failure is a part of  
any successful path.  
No one gets it right  
all the time.**

# Preparing to Fail

*Rabbi Jason Bonder, Associate Rabbi*

I've never seen Shohei Ohtani strike out. And that worries me.

Shohei Ohtani, of the Los Angeles Angels is one of the best players in Major League Baseball today. What makes Ohtani unique is that he is both a great pitcher and a great hitter.

These days, I don't have much time to watch a full baseball game in one sitting so I follow Major League Baseball on social media. It is through Facebook, Instagram, and Twitter, that I know of Ohtani's incredible successes on the field. This season, at the time of my writing this article, he has hit 25 homeruns — a very impressive feat. I can confidently guess that I saw approximately 20 of those homeruns amidst my online scrolling.

I'm sure the videos of his monstrous blasts rack up the reactions, clicks, comments, tweets, and retweets like few other posts can.

Yet for all the homeruns I've seen, I've never seen him strike out. Not once. And oh, by the way, as of the moment I'm writing this, Shohei Ohtani has struck out 106 times this season.

Failure is a part of any successful path. No one gets it right all the time. Almost any goal worth setting isn't achieved on the first try. Social media, however, sure does make it look that way. I'm not worried that I won't get a balanced understanding of Shohei Ohtani. What worries me is that the methods by which I follow Ohtani's baseball season are the same way that many of us learn about, and form our opinions of, the world around us. We as a society and as individuals are in danger of applying the fantasy world of social media to our real lives. If we do, we might abandon our goals at the first sign of difficulty. If we don't see our friends, our sports heroes fail, we might think less of ourselves when we personally experience it.

The position of Yom Kippur on the Jewish calendar is an antidote to our society's impulse to turn away from failure. Merely ten days after Rosh Hashanah inspires us to celebrate and dream, we dedicate a whole day to apologizing for our failures. Jewish tradition gives us permission to fail because we as a people know that the only way to improvement is moving through obstacles. Failure is a part of the process.

It may sound counterintuitive, but as we prepare for the new Jewish year, I hope that we are prepared to fail. If we do, it means that we have chosen worthy goals. It means that with resilience we will eventually succeed. It means that in 5783, we will be ready for the reality of life instead of the fabricated world of social media.

# Shiru L'Adonai



Jaime Murley

## Cantor Jaime Murley, Interim Cantor & Junior Choir Director

With a new year in a new position, comes a lot of anticipation and excitement. Coming off the heels of two years of Covid style High Holy Days services, I am beyond excited to be back in person, accompanied live by all the congregation's choirs.

If you are an adult interested in joining the adult choir, we ask you to wait until after the holidays because of the vast amount of music and the short amount of rehearsal time. The adult choir will have a full schedule of singing this year, so you will certainly get to do a lot of singing after the High Holy Days.

For returning members, the **Adult Choir rehearsals for the High Holy Days will take place on the following dates from 7:30 pm - 9 pm:**

- Tuesday, August 30
- Tuesday, September 6
- Monday, September 12
- Tuesday, September 20



**Junior Choir**  
CONGREGATION BETH OR

If your children are in Kindergarten through 12th grade, they are welcome to join our High Holy Days Youth Choir, where we will bring together the Junior Choir and Chai Notes to make one big choir! New members are welcome to join for these services. All

rehearsals will be combined with fun social events. The schedule will be as follows:

### **Sunday, August 28: 11 am – 3 pm High Holy Days Boot Camp!!**

We will spend a few hours getting to know each other and learning the music, and then we will conclude with a DJ Dance Party!!

### **Sundays, September 11 and 18**

**11:15 am - 12:45 pm** for all students NOT in Rishon Hebrew; lunch will be served

**12:45 pm - 2:15 pm** for all students In Rishon Hebrew and Chai Notes ; lunch will be served

### **Wednesdays, September 21 and 28**

**5:30 pm – 7 pm** dinner will be served while we play High Holy Day trivia; followed by rehearsal

This promises to be a year full of excitement and fabulous music making. I'm so thankful to be part of a congregation that cherishes Jewish music as much as I do.

If you have any questions about how you can be involved with the music at Beth Or, please don't hesitate to contact me anytime at [jmurley@bethor.org](mailto:jmurley@bethor.org). *Shanah Tovah!!!*





# Making Worship Services and Programs More Accessible

*Amy S. Abrams*  
*Executive Director*

Beth Or is pleased to announce that we have added a new capability that will make it easier for those with hearing impairments to enjoy our worship services and programs held in the Gitlin Sanctuary and Rosenfeld Social Hall.

We have installed the Williams AV system. Using the WaveCAST App our congregants will be able to listen to streaming live audio directly from the Beth Or sound system.

Audio is sent over a Wi-Fi connection directly to your personal device (hearing aid or any Bluetooth enabled device) or via a Beth Or provided WaveCAST device, letting you easily listen to the service or program adjusting the volume as needed.

***Note: The WaveCAST App can be downloaded from the Google Play for Android devices or the Apple App Store for IOS devices.***

The system is live today. We will conduct 3 sessions at Beth Or where you can set up your personal device or try one of ours. Or simply go to the Sanctuary the next time you are here and follow the instructions in the box on this page to set up your personal device or ask to borrow one of ours.



*Amy S. Abrams*

## **Congregant System Testing/Set Up Dates:**

- **Sunday, September 11, 9 am – 12 pm** (during Welcome Back Reconnection Fair)
- **Wednesday, September 14, 5 pm – 6 pm** (prior to Board Meeting)
- **Friday, September 16, 6 pm – 7 pm** (prior to Shabbat Worship Service)

## **Assisted Listening Device Instructions**

### **If using the WAVECAST App on your mobile phone (recommended):**

*\*This app can be connected to any Bluetooth enabled air pods, headphones or your personal hearing aids.*

1. Download the WAVECAST app for free from the app store or play store.
2. Go to your phone's settings and connect to the WAVECAST WIFI.
3. In the WAVECAST app, select WAVECAST.
4. If WAVECAST does not automatically pop up, press the icon on the bottom on the app screen.
5. Adjust your phone's volume as needed.



### **If using Beth Or's WAVECAST Audio Device:**

*\*This device can be used with your personal headphones or one of Beth Or's headphones/earbuds provided for use.*

1. Touch the screen and swipe up from the bottom to unlock.
2. Select WAVECAST on the screen.
3. Adjust the volume by using the up & down buttons on the side of the device.



## Important School Dates

**Sunday, September 11**

Opening Day of Sunday  
Religious School — Judaics,  
Hebrew, and YOBO!

**Sunday, September 25**

No Sunday, Hebrew, or YOBO

**Monday, September 26**

No Sheni: Rosh Hashanah

**Tuesday, September 27**

No Sheni: Rosh Hashanah

**Sunday, October 2:**

Monday, October 3: No Sheni:  
Yom Kippur

**Tuesday, October 4**

No Sheni: Yom Kippur

**Monday, October 10**

No Sheni: Sukkot

**Tuesday, October 11**

No Sheni: Sukkot

**Monday, October 16**

Consecration

**Monday, October 17**

No Sheni: Shemini Atzeret/  
Simchat Torah

**Tuesday, October 18**

No Sheni: Shemini Atzeret/  
Simchat Torah

**Sunday, October 30**

No Rishon

# Religious School NEWS

## Opening the Doors

*Aaron Nienshultz, Director of Religious School*

I am so excited. Not only does the school year begin on 11 September, but also people are welcome back into the building! That means we're going to offer many fun in-person events for the year to come.

- **Community-Wide Kick-Off** – Come to meet many of the auxiliaries, groups, and clubs that call Beth Or home
- **YOBO Opening Night Kona Ice** and a team-building escape the room — enough said!
- **Confirmation Opening Night** – 10th graders enjoy dinner and an intro to Confirmation
- **Reopening the Shmear Café** – See below a note from our Shmear Café friends!



*Aaron Nienshultz*

**Leonard &  
Madlyn Abramson  
Education Center**

CONGREGATION BETH OR

- **Revamped Family Education Meet** – New friends, connect with old ones, and learn side-by-side with your children

All of these events are in-person and at Beth Or (except Confirmation opening night). Let's open the doors of our minds to learning, the doors of our hearts to Judaism, and the doors of the building to our community!

## A Note about the Shmear Café

Located within the heart of Beth Or is the Shmear Café. Set to open on September 11, we sell bagels and cream cheese, coffee, and all kinds of yummy snacks for students and parents alike. The café has been a cozy space for moms and dads to spend their morning while their children attend Sunday School; meeting with other parents, using the internet to work, or savoring a snack before or after classes. We are open from 9:30 am – 1 pm ONLY on Sundays during Judaic Studies and days that Rishon (Sunday Hebrew School) meets. Since there will no longer be a car line and parents must bring their students into the building, it is a perfect space to meet. The best reason to come to the Shmear? All of our profits will be donated to Food Insecurity banks at the end of the school year.



**Shmear Café**  
**שמיר קפה**

*Tzedakah* can be delicious!

— **Randi Copman and  
Laurie Marx, Shmear Café Co-Chairs**



# Coming Back to School

Sara Baum, Early Childhood Director

It's that time of year again. It is time to dust off the backpacks and lunch boxes and put the goggles back into storage. It is one of the biggest transitions of the year, coming back to school. It is important for parents to set the tone for this time of year. If you show confidence and excitement through your words and body language, you will help to make the separation and transition easier for your child. Create excitement while preparing for school. You can do this by letting your children pick a new outfit or the color of their lunch box. You can make a poster together of their daily schedule or create a space for their school supplies when they get home each day. Giving your children ownership over a part of the process can give them time to prepare for their return to school. Children have a lot of big feelings they may not be able to process alone. Helping your children identify their emotions and validating them can make them less overwhelming. Lastly, finding routines to help with transitions is a great tool. Creating a special goodbye at the door of the classroom "two kisses, a big hug and a high five," or taking the same way to school and pointing out specific landmarks or listening to a favorite song in the car. You may find having the mornings be predictable for you children helps them feel calm and safe when transitioning to school each morning. You are not alone if your children have a hard time transitioning back to school. We are happy to provide support and give you someone to lean on. Please do not hesitate to reach out.

Here are some books about transitions or going back to school:

***Llama Llama Misses Mama*** by Anna Dewdney

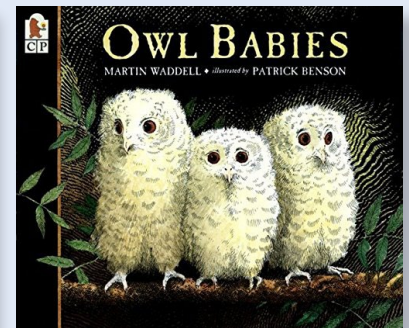
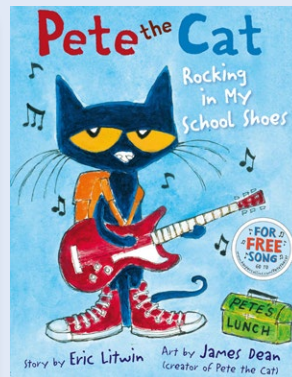
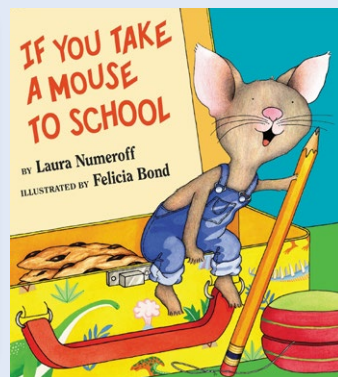
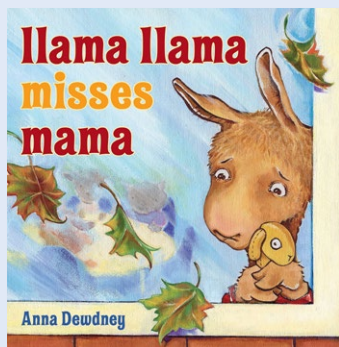
***The Kissing Hand*** by Audrey Penn

***Owl Babies*** by Martin Waddell

***If You Take a Mouse to School*** by Laura Numeroff

***Pete the Cat: Rocking in My School Shoes*** by Eric Litwin

***Wemberly Worried*** by Kevin Henkes



**Mark your calendars with these important dates coming up in the next few months:**

## SEPTEMBER

9/5 – CECE Closed, Labor Day

9/6 – CECE Closed, Teacher In-service

9/7 – First day of School

9/26 – CECE Closed, Rosh Hashanah

9/27 – CECE Closed, 2nd Day Rosh Hashanah

## OCTOBER

10/4- 3pm Dismissal, Kol Nidre

10/5 – CECE Closed, Yom Kippur

10/10 – CECE Closed, Sukkot

10/11+12- Picture Day

10/12- Back to School Night

10/17 – CECE Closed, Simchat Torah



Sara Baum



**Zipporah S. Abramson  
Center for Early  
Childhood Education**

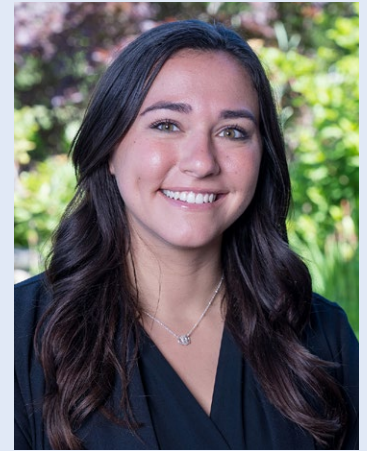
CONGREGATION BETH OR

# Introducing New Dreams 2 Deeds Initiative

*Rachel Shapiro, Youth Engagement Advisor*

I hope everyone had a fantastic summer! There are so many exciting things happening this fall and we are so eager to get started! Be on the lookout for upcoming Youth Events throughout the fall as we will post links to RSVP.

We are also introducing a new initiative; **Dreams 2 Deeds**. We are thankful that Beth Or has generously budgeted several thousand dollars in grants that are available to be awarded based on needs. For the D2D initiative, it will be used for social service projects during the 2022-23 school year. With this budget in mind, we are offering the opportunity for our teens (Grades 10-12) to submit an application to propose an action plan to give back to a cause or organization of their choosing. Students will create this project from the ground up with mentorship from me as their Youth Advisor.



*Rachel Shapiro*

## Benefits of this program include:

- Fulfilling our religious mandate to make the world a better place
- Learning how to budget, plan, allocate and execute a social service project to completion
- Gaining organization, time management and leadership skills
- Receiving a college recommendation letter written by Rabbi Marx
- The opportunity to make a difference for a cause that is meaningful to you

For more information or to fill out an application, please go to [bethor.org/form/d2d](https://bethor.org/form/d2d) or email me at [rshapiro@bethor.org](mailto:rshapiro@bethor.org).





# Reconnecting in 5783

*Jillian Peskin, Director of Member & Youth Engagement*

Anyone who knows me knows that my favorite part of Beth Or is the people! Greeting as they walk in the doors for services, school or fun events is my bread and butter. I have spent the last 15 years (wow!) building meaningful relationships with the heart and soul of our community — YOU!

Since March of 2020 we have had fewer opportunities to build these connections. I have missed schmoozing in the café on Sunday mornings, long conversations in the preschool lobby and noshing with you all at onegs. This year is different — and I am excited to be back to welcome you into our doors for all occasions!



*Jillian Peskin*



To kick off our year, and bring us all back together — we are launching the first ever **Welcome Back Reconnection Fair**

on **Sunday, September 11 from 9am - 12pm**. While this event takes place during Religious School — it's my hope that our whole community will come! We have invited all of our Auxiliaries, groups, taskforces, committees and C4C clubs to join us! In addition to that, the Schmear café will be open serving bagels, coffee and more!

So many of you have been members for a very long time and so many of you are new — I hope you can all come, socialize, reconnect and get back to what our community does best — creating a warm vibrant community!

If you would like to purchase your own **Lulav and Etrog** for your sukkah

Send a check for \$50 payable to Beth Or along with your name, email and phone number to the office, attention Barbara Murtha, by September 12.



# Meet Our B'nai Mitzvah Students

## Beck Rosenthal

September 10

During the pandemic my dad, chef Chad Rosenthal, owner of The Lucky Well in Ambler, and I started making ice cream together. We named it BAD (Beck & Daddy ice cream) and had fun creating flavors. I created a special batch for my Mitzvah Project and called it "The Bar Mitzvah Blend" and donated all of the proceeds to the **World Central Kitchen**. The ice cream was vanilla mixed with yellow Oreos and sprinkled with yellow and blue sprinkles to represent the colors of Ukraine. WC Kitchen is a non-profit organization that provides meals in the wake of natural disasters. The World Central Kitchen was founded by Jose Andres in 2010 and became very active in Ukraine one month after the Russian invasion. They are on the ground actively providing food to people in need. BAD ice cream donated over \$2,000 to WC Kitchen to assist in their efforts to address hunger issues immediately following a disaster.



## Abby and Emma Rucker

September 17

We volunteered for **Meals That Matter** right here at Beth Or for our Mitzvah Project. We used our combined love of baking and cooking with our desire to help others. We met a few times during the year with the Meals That Matter volunteers. We made oatmeal chocolate chip cookies, packaged the individual meals for delivery, and washed the pots and pans used for the meal preparation. It was amazing for us to see how many people we were helping. There were at least 200-300 meals prepared during each of our visits. The congregation hosts Meals That Matter every other month and they create well balanced, healthy meals for those less fortunate.



## Sophia Gaffney

October 8

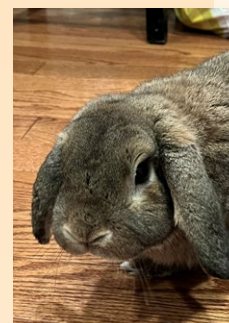
I will be participating in a "**TOPSoccer Program** (The Outreach Program for Soccer)" in my community. TOPSoccer is a recreational sports program for children and adults with intellectual, emotional, or physical disabilities offered only through Valley Soccer Club. I will be paired with a participant so I can share my joy of playing and skills. This program will run for eight weeks in September and October. I will be paired with a specific player for the eight weeks, and my goal is to establish trust and instill confidence that will allow my "buddy" to achieve their full potential.



## Daniel Iris

October 8

For my Mitzvah Project, I will be raising money for **Last Chance Ranch Animal Rescue**, located in Quakertown, PA. The website is [www.lastchanceranch.org](http://www.lastchanceranch.org). Last Chance Ranch is a nonprofit organization that rescues and rehabilitates animals, including dogs, cats, rabbits, and farm animals. This animal shelter places animals into homes where they receive the love, attention, and care they deserve. I chose this animal shelter for my project because this is where we rescued our pet rabbit, Mocha, almost five years ago. My goal is to raise at least \$300 to donate to the shelter. I will raise the money by making balloon animals for kids and asking for donations. I will learn how to make balloon animals – dogs, flowers, rabbits, and swords for this project.



## Alexis Fredd

October 15

For my Mitzvah Project, I have partnered with **The Rachel Way Food Pantry**. This is a local food pantry that specializes in providing gluten and dairy-free food for people in need. Having to follow a gluten-free diet myself, I understand the challenges that are faced by others with dietary restrictions. The Rachel Way is a great organization to help ensure that everyone has access to the food they need. You can read more about The Rachel Way on their website <http://www.therachelway.org/about.html>. I am collecting grocery store gift cards to donate to The Rachel Way. If you would like to contribute, you can send eGift-cards from Giant, Walmart or Target directly to [sjf416@gmail.com](mailto:sjf416@gmail.com) or you can donate directly on their site. <http://www.therachelway.org/donate.html>.





## Nate Pinchuk

October 29

My Mitzvah Project is raising money for the **Pennsylvania SPCA**, which is an organization aimed at preventing animal cruelty and promoting animal rescue. You can find out more by visiting <https://www.pspca.org>. This organization has worked tirelessly for over 150 years to protect and save animals all over Pennsylvania. I am very passionate about this cause and want to help as many animals as possible.

I will be hosting a bake sale at Beth Or on Sunday September 18 from 10 am - 1 pm. Homemade cupcakes, brownies and cookies will be available. Hope you can help support this amazing cause!



## Benjamin Weiss

November 19

1 out of 5 underserved households are not getting their kids involved in sports because of the rising price of equipment. I selected the non-profit **Leveling the Playing Field (LFP)** for my Mitzvah Project to help underserved kids gain access to equipment and have the chance to play sports. I have really benefited from playing baseball and other sports — and I want other kids to have the same opportunities.

LFP collects and redistributes equipment to expand access and equity within youth sports and recreation programs in under-resourced communities. LFP expanded to Philadelphia during Fall 2021 to ensure that all Greater Philly area kids get off the sidelines! I will collect sports equipment (guidelines at <https://www.levelingtheplayingfield.org/ways-to-help/donate-equipment/>) at Beth Or starting on October 9. So, clean out your garages and clear the yard of used equipment to help kids in need! You can also make a contribution to LFP at <https://levelingtheplayingfield.networkforgood.com/projects/166888-benjamin-weiss-s-fundraiser>. Thank you for your support!



Mitzvah  
Tor

## We Care

The proof is in! Two words that describe the spirit of Beth Or's social action efforts are We Care. Committee members lead and put ideas into motion that you support and participate in. To top things off, the newly created D2D: Dreams to Deeds which you can read about in Rachel's article of this issue, further highlights the We Care culture embedded in Beth Or's DNA. Your presence is appreciated always. Thank you!

### 2022 MITZVAH MONTHS: SEPTEMBER - DECEMBER

Below are our September and October collections and activities. Stay tuned for November and December!

**High Holy Days Food Drive** – collecting non-perishables for Hope Gardens/Family Promise, in the main entrance vestibule. Chairs: Susy Krimker ([susykrimker@gmail.com](mailto:susykrimker@gmail.com)) & Margie Chachkin ([chachkin@aol.com](mailto:chachkin@aol.com))

September 18 - October 5

**Meals That Matter** – cooking meals for KleinLife seniors, in the Beth Or kitchen.

Chair: Caren Gutman ([carengutman@gmail.com](mailto:carengutman@gmail.com))

Monday, September 12, 10 am - 12 noon

Sunday, October 16, 1 pm - 3 pm

Monday, November 14, 10 am - 12 noon

Sunday, December 4, 10 am - 12 noon

**Knitting Circle** – knitting afghans for hospital patients and congregants who are healing, in the Beth Or library.

Chair: Faye Benshetler ([febx@comcast.net](mailto:febx@comcast.net))

Wednesday, September 14, 7 pm - 9 pm

Friday, September 23, 10:30 am - 12 noon

Wednesday, October 19, 7 pm - 9 pm

Friday, October 28, 10:30 am - 12 noon

Friday, November 4, 10:30 am - 12 noon

Wednesday, November 9, 7 pm - 9 pm

Friday, December 2, 10:30 am - 12 noon

Wednesday, December 14, 7 pm - 9 pm

**Jewish Relief Agency (JRA)** – packing and delivering food boxes to seniors in N.E. Philadelphia.

Chairs: Marlene & Bob Cohen ([rcohenesquire@gmail.com](mailto:rcohenesquire@gmail.com))

Sundays, September 11, October 23, November 13, December 11, 10 am - 2 pm (if packing and delivering)

**Collections at Beth Or** – Sunday, October 9, 9 am - 12 noon

- **Our Closet** - adult clothing, Chairs: Rachel Levine ([levinerb@yahoo.com](mailto:levinerb@yahoo.com)) & Jody Pascal ([jodyp2005@verizon.net](mailto:jodyp2005@verizon.net))
- **Sneaker Reuse Collection** - well-worn sneakers needed! Chairs: Marlene & Bob Cohen ([rcohenesquire@gmail.com](mailto:rcohenesquire@gmail.com))
- **Bucks County SPCA** - food and pet gear, Chairs: Faye Benshetler ([febx@comcast.net](mailto:febx@comcast.net)) & Nancy Shaffer-End ([theends4@msn.com](mailto:theends4@msn.com))

**Breast Cancer Awareness Community Fair** – Sunday, October 23, 9 am - 12 pm – coordinated with Sisterhood, Brotherhood, Beth Or Cares & Mental Health Task Force - hear from professionals, visit booths, take part in hands-on activities, and bring your gently used and new bras.

**Sorting at the Mitzvah Circle warehouse in Norristown** – Sunday, October 30, 2 pm - 4 pm

Chair: Marv Schwartz — pre-registration required ([marvdebschwartz@verizon.net](mailto:marvdebschwartz@verizon.net))

We look forward to seeing you at our Fall collections and activities!

## New!

Social Action Committee member Carole Chasen has been volunteering with the Prison Literacy Project at the Phoenix Prison in Skippack for the past seven years and wants to spread the word about the benefits of doing so: ***"Volunteering 1.5 hours per week with men whose goal is to earn a GED helps them secure better employment when they enter back into the community. And in the end, not only will your student learn from you, but you will learn from those you teach."*** If you are interested or know of someone, please reach out to Carole at 267-222-0179 or [carole.chasen@yahoo.com](mailto:carole.chasen@yahoo.com).

*Todah Rabah!*

**Social Action Chairs • Susy Krimker, [susykrimker@gmail.com](mailto:susykrimker@gmail.com) • Margie Chachkin, [chachkin@aol.com](mailto:chachkin@aol.com)**



## Striving for 100% Voter Participation

Congregation Beth Or is striving for 100% voter participation in the 2022 General Election as part of the **Religious Action Center's Every Voice, Every Vote** campaign.

We encourage you to make a voting plan! Please scan QR code below for new voter registrations, a change in name, address or party, to vote by mail, or visit [pa.gov](https://pa.gov) for complete voting information.

- ✓ **Register** by October 24 (share the QR code with anyone who will be 18 or older by 11/8/22))
- ✓ **Vote by Mail or Absentee Ballot** application deadline is November 1 (remind friends & relatives living temporarily out of state or in a senior center, too)
- ✓ Remind PA college students of their **voting options**.
- ✓ If voting in person, **confirm your polling place**.
- ✓ **See what's on your ballot** – be informed by visiting [vote411.org](https://vote411.org)
- ✓ **Make your vote count on election day, November 8!**



Links for the bolded information above will be shared in Community Matters emails. For further information, please contact Social Justice Committee members, Janet Katz, [bocakatz@aol.com](mailto:bocakatz@aol.com) or Margie Chachkin, [chachkin@aol.com](mailto:chachkin@aol.com).



## JOIN US!

### Social Justice Every Voice Every Vote Postcarding Event

Sunday, September 11, 9 am - 12 pm | RSVP Requested

Help make sure the voice and vote of every eligible voter in PA is heard this fall! Stop by the Café during the Welcome Back Reconnection Fair to join The Social Justice Committee to write out postcards which will be sent to targeted eligible voters as part of the **RAC-PA Every Voice Every Vote Campaign**.

The PA League of Women Voters will provide the postcards and nonpartisan script for written messages and Beth Or will take care of mailing the postcards using a mailing list provided by the RAC-PA. Postcards need to be pre-ordered, so please let us know if you will be participating by contacting Janet Katz, [bocakatz@aol.com](mailto:bocakatz@aol.com).

**WHY IS THIS OUTREACH SO IMPORTANT?** Because almost 2.9 million eligible voters in Pennsylvania did not vote in 2020. Many of our fellow Pennsylvanians have been convinced their voices and votes don't matter or are prevented from voting by suppression tactics.

**Together, we can encourage others to use their voice!**



# GET CONNECTED

## Business & Career Network

### Back to Business at Beth Or!

**GET CONNECTED** is Congregation Beth Or's Business and Career Networking Group. **GET CONNECTED** is comprised Beth Or members who regularly attend meetings and events that are geared towards cultivating business relationships. We meet about 6-8 times a year either in person or on Zoom. All Beth Or members in good standing are welcome to attend.

**Our next meeting will be Monday, September 12 at 7 pm at Beth Or.** If you are looking to grow your business or network for your next job with friendly, like-minded congregants please join us! Contact Evan Segal at [evan@segalfinancial.com](mailto:evan@segalfinancial.com) for more info.

This past July, we were excited to be at Beth Or for our first annual GET CONNECTED SUMMER BBQ! About 40 members attended for a wonderful evening of food, friends, and networking. Here are some highlights:



*Evan Segal*





# Beth Or Brotherhood

## Brotherhood Events Encourage Belonging

Doug Burtnick, Brotherhood President



Doug Burtnick



**Brotherhood**  
CONGREGATION BETH OR  
Fellowship • Community  
Service • Support

Brotherhood is growing and we are looking for Beth Or Men who are interested in building community and growing relationships within Beth Or.

You received your electronic billing this summer and we hope you checked the Brotherhood Membership box AND chose the upgrade option to become a Mensch.

But, Brotherhood's not really about joining. It's about belonging. So whether you check the box or not we hope you join us for some of our autumn and winter events. Check the CBO calendar which will always be up-to-date. Let me mention four key dates:

**October 9 – the 11th annual Brotherhood Car Show** in the parking lot at CBO. This event has quickly become a serious regional event with great classic, sports and muscle cars from all eras.

**October 11 – Steak in the Sukkah.** Our first time doing an outdoor Sukkot Event. It is what it sounds like. We'll grill steaks, pour Scotch, have a great conversation with guest speaker Rabbi Marx and enjoy an evening of camaraderie. Pricing and time TBD.

**October 23 – Brotherhood, Sisterhood, Social Action and others host a fabulous Beth Or Cares event at CBO to raise awareness of breast cancer.** We know it has affected almost every one of us. Come learn more about detection, support, and even about the high prevalence among men.

**December 3 – Brotherhood's Annual Dinner and Fund Raiser** featuring Smoke and Mirrors. Great Food, Great Company and Great Magic. Save the date, bring a date! Ticketing information available soon — this event is open to all Beth Or adults and their friends.

This is a small sample of what Brotherhood does and will continue to do. Come be a part of it.

Send a note to [bethorbromembership@gmail.com](mailto:bethorbromembership@gmail.com), or reach out to any of our officers, **Doug Burtnick** – President, **Stu Briefer** – 1st VP, **Josh Stein** – 2nd VP, **Bob Rosin** – Service VP, **Phil Goodman** – Treasurer and **Jim Tannenbaum** – Secretary to have a chat, grab a coffee or to volunteer to help out.

## KOSHER WINE SALES

Now you can purchase kosher wine all year long and benefit Beth Or! Use the Beth Or affiliate link on [kosherwine.com](http://bit.ly/BethOrBrotherhood): <http://bit.ly/BethOrBrotherhood> or click the KosherWine symbol on the bottom right side of the Beth Or website home page, "Connect With Us" section.

**5% of all sales given back to Brotherhood to benefit Beth Or programming!**

Questions? Contact [info@bethorbrotherhood.org](mailto:info@bethorbrotherhood.org).



# Beth Or Sisterhood

## Let's Conjure Up Those Happy Chemicals

*Melisa Lubinski, Sisterhood President*

As we wish summer a bittersweet goodbye, our kids are back into school routines, and we adults face a reality check of having to remember what day of the week it is. Humor me for a moment as I ask you to go way back to high school chemistry. Your brain produces a variety of chemicals that affect your overall wellbeing and how you process the world around you. These chemicals or neurotransmitters include dopamine, serotonin, oxytocin, and endorphins. We are not taught a lot in school about how to boost production of these good brain chemicals. However, they can be triggered in some basic ways. For instance, Dopamine is related to rewards from appetite, pleasure and creative thinking. The simple act of completing a task, doing selfcare, and trying something new all can trigger your brain to produce these good chemicals. Serotonin is mood stabilizing. Actions such as meditation, mindfulness and taking a walk outside all help you to feel calm and confident. Oxytocin is considered a "cuddle" chemical because it is directly triggered from social bonding. During the pandemic, many of us suffered from lack of physical touch like hugging which we all appreciate as a sign of caring. Fortunately, that time is behind us, so stimulate those chemicals again by being kind and helpful to others, hang out with our pets, and yes, hug when comfortable. Lastly, Endorphins have the ability to reduce pain and boost happiness. Physical activities, laughing, and listening to music all increase these chemicals.

As I look ahead at our Sisterhood calendar I smile because I see many activities and programs that can elevate these positive brain chemicals and help everyone get reconnected. Some activities are traditional while others are brand new. Either way, we hope to offer a little something for everyone. Join us on 9/18 for a painting on glass class. Maybe volunteering is something that would interest you such as:

- Helping at The Tarshis Giftshop
- Decorating the Bima Sukkah for Sukkot
- Selling Gently Used Books at the Beth Or Pink Event for Breast Cancer Awareness on 10/23 and again at our Chanukah Bazaar on 11/6.

Looking forward to gathering together at Sisterhood Shabbat and sharing in a night of togetherness, prayer and song on 11/18. Perhaps you have a competitive side and would like to showcase your baking talent at our Mandel Bread Bake Off Contest on 12/7. Check the Beth Or web calendar, Chai Lights email and the Sisterhood Facebook page for details and dates for all Sisterhood programming. Get your dose of happy chemicals in before the fall chills and doldrums set in!



*Melisa Lubinski*



**Sisterhood**

CONGREGATION BETH OR

Fellowship • Community  
Service • Support

**Please Support the**

*Tarshis Gift Shop*

*Proceeds Benefit Beth Or Sisterhood Programs*

**Hours:** For a personal appointment, contact Bobbi Adair,  
[Bobbifadair@gmail.com](mailto:Bobbifadair@gmail.com), 215-896-4787 or Holly Green, 215-805-8597

**Fall Hours:** Sunday, 9:30 am – 12:30 pm • Friday 10 am - 12 pm

Discounts available for Sisterhood Members and Beth Or Staff | Great Monthly Sales and New Arrivals

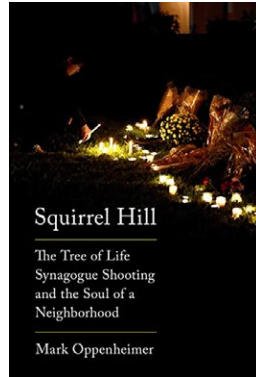


## ADULT PROGRAMS

### Beth Or Jewish Book Lovers Series Discussion: *Squirrel Hill: The Tree of Life Synagogue Shooting and the Soul of a Neighborhood*

**Wednesday, October 26 • 7:30 pm**

Read the first of 4 books in the 2022-23 Beth Or Jewish Book Series, *Squirrel Hill: The Tree of Life Synagogue Shooting and the Soul of a Neighborhood* by Mark Oppenheimer, and then join us for a review and discussion led by Aaron Nienshultz. RSVP to Dottie Singer, [ds1403@hotmail.com](mailto:ds1403@hotmail.com). Please let Dottie know whether you will participate in person or via Zoom. She will share the Zoom link if you are participating remotely.



**About the book:** Where were you four years ago on Saturday, October 27, 2018? This was the day of the deadliest single antisemitic attack in the history of the United States. This book is a piercing portrait of the struggles and triumphs of one of America's renowned Jewish neighborhoods.

## ART GALLERY

### Opening Reception featuring Artists: Cyndi Philkill and Karen Liebman

**Friday, October 14 • Following Shabbat Worship Service**

After 2 ½ years, the Olitsky Art Gallery will once again present exhibits featuring local artists. We are happy to present the work of two accomplished artists, Cyndi Philkill and Karen Liebman.

**Cyndi Philkill's** mixed-media artwork expresses her love for people and their stories, by using unusual materials and supplies to tell those stories. Cyndi uses vintage paper, old letters, found objects, to create work that carries the memories and essence of the people whose stories she tells.



Beth Or congregant, **Karen Liebman** paints still life and scenes inspired by her travels. She loves to explore new media and techniques, and this is leading her to experiment with abstract forms. She tries to push



reality to reveal something special and unique.

**WANTED:** Partner to help produce exhibits at the Olitsky Art Gallery. Help needed to discover new artists, book exhibits, promote the gallery, hang the shows. Long hours, no pay, lots of fun and satisfaction. Contact Karen at [karliebman@aol.com](mailto:karliebman@aol.com).

## BROTHERHOOD/SISTERHOOD

### Sisterhood Welcome Back Event: Painting on Glass

**Sunday, September 18 • 1 pm - 3 pm**

Get creative, join your friends and make new friends during a fun & relaxing afternoon painting on glass. No art experience necessary! Participants will be guided through their project by Beth Or congregant and art teacher, Allison Levin. Each participant chooses



one of the following to paint: Wine Glass, Mini Jar with Lid, Mini Bowl, Glass Mug or Olive Oil Dispenser. (Glassware options available on a first come, first serve basis). Enjoy complimentary snacks and sips, too! Cost: \$18, payable in advance by check to Beth Or Sisterhood or with Paypal. \$20 cash/check at the door for walk-ins, while supplies last. RSVP to Ellen Mirbach, [semirbach@gmail.com](mailto:semirbach@gmail.com) by 9/10.

### 11th Annual Classic Car Show sponsored by Brotherhood

**Sunday, October 9 • 9 am - 1 pm**

Come to the Beth Or parking lot (enter from Butler Pike) to see Classics, GTOs, Sports Cars, Muscle Cars & More! Enjoy free food & drink, a 50/50 raffle and family fun for all. Free car registration and trophies. Space is limited. Please register your car in advance. To register your car, contact Bob Cohen at [rcohenesquire@aol.com](mailto:rcohenesquire@aol.com) or Allan Posner at [allan.posner1@gmail.com](mailto:allan.posner1@gmail.com).



## Steak in the Sukkah

**Sunday, October 9 • Time TBD**

Check the web calendar listing or your weekly Chai Lights for details including pricing and time.

### SAVE THE DATE!

## Chanukah Bazaar sponsored by Sisterhood

**Sunday, November 6 • 10 am – 2 pm**

Our annual Chanukah Bazaar is moving back indoors! Mark your calendar to come to Beth Or to shop and help support a variety of local vendors. Enjoy raffles, food and our fabulous latkes, too! For vendor information, contact Sherry Spector, [sspector1949@gmail.com](mailto:sspector1949@gmail.com).

### SAVE THE DATE!

## Brotherhood Annual Dinner & Fundraiser

**Saturday, December 3 • 7 pm – 11 pm**

Spend the night being entertained by Smoke and Mirrors while raising money to support Beth Or programming! Join Brotherhood for great food, fun, laughs, auction and the chance to win a minimum \$2,500 in a 50/50 raffle. All ladies and gents are welcome! Look for cost & RSVP information to come soon!

## GET CONNECTED: BETH OR BUSINESS & CAREER NETWORK

### Fall Kick-Off Networking Event

**Monday September 12, 7 pm – 8 pm**

Check your weekly Chai Light email for details. RSVP to Evan Segal, [evan@segalfinancial.org](mailto:evan@segalfinancial.org).



## HOLIDAYS AND SHABBAT EVENTS

### Selichot Dinner & Program

**Saturday, September 17 • 6:30 pm followed by  
Worship Service, 8:30 pm**

As we prepare to kick off the High Holy Days season, come to Beth Or for dinner and a panel discussion about forgiveness, repentance and grudge bearing from various professional points of view. Panelists include Beth Or congregants: Jonathan Segal (Labor Attorney, Business perspective); Tanya Vishnevsky (Psychologist, Psychological perspective); Marc Rabinowitz (Physician, Physiological perspective) along with Rabbi Marx and Rabbi Bonder (Spiritual perspective). Dinner is catered by Pumpernicks. RSVP by September 12: [www.bethor.org/form/selichot2022](http://www.bethor.org/form/selichot2022).



## FALL FESTIVALS: SUKKOT & SIMCHAT TORAH

Fall Festival Programs will take place in person and outdoors when feasible, unless otherwise noted below.

### Pizza in the Hut Dinner and Erev Sukkot Worship with CECE Consecration in the Goldstein Sukkah

**Sunday, October 9 • Dinner - 5 pm; Service – 5:45 pm**

Come to our beautiful outdoor Goldstein Sukkah on the Flitter Family Terrace for a pizza dinner with the Clergy. Following dinner, join us for a spirited, song-filled service where we will be featuring the Beth Or Jr. Choir and a special honor for our CECE students. Everyone gets a chance to shake the lulav & etrog! See your weekly Chai Lights email or the web calendar to RSVP by 10/2. This program is geared toward young families, but all are invited to attend.

### Sukkot Worship with Brunch to Follow Monday, October 10 • 9 am

Sukkot worship takes place in the Gitlin Sanctuary with brunch to follow. RSVP to Barbara Murtha, [bmurtha@bethor.org](mailto:bmurtha@bethor.org).

### Sushi, Sake, Sukkah & Soccer!

**Friday, October 14 • 5:30 pm**

One of our most favorite festival events is back – with a new twist once again! There will be soccer for the kids, and babysitting, too! Look for more information and RSVP in your weekly Chai Lights email as the event gets closer.

### Erev Simchat Torah Worship & Consecration followed by Israeli Dancing

**Sunday, October 16 • 6:30 pm**

Join us for this annual tradition! Look for details to come in your weekly email. Following the service, meet your friends for an Israeli Dance Party!

### Simchat Torah Worship & Yizkor with Brunch to Follow

**Monday, October 17 • 9 am**

Simchat Torah and Yizkor take place in the Gitlin Sanctuary with brunch to follow. RSVP to Barbara Murtha, [bmurtha@bethor.org](mailto:bmurtha@bethor.org).



## NEW! CANTORIAL AND MUSICAL SOLOISTS

We are excited to bring some new voices to enhance our Shabbat Worship experience during select Shabbatot over the next year. These talented performers come from a diverse background with varying musical styles. We hope you enjoy this addition to services. Visit the website calendar listing for the bio of each guest. Upcoming soloists include:



**Shabbat Worship with Cantorial Soloist Jody Kidwell**  
**Friday, September 16 • 7:30 pm**

**Shabbat Worship with Musical Guest Joel Kutner**  
**Friday, October 21 • 7:30 pm**



## SPECIAL EVENTS

**SAVE THE DATE!**

**The Pink Event: Breast Cancer Awareness Open House**

**Sunday, October 23 • 9 am – 12 pm**

The CDC (Center for Disease Control) reports that roughly 246,000 cases of breast cancer are diagnosed in women and 2,400 cases in men each year. Spend some time with professionals from local hospitals, research, and wellness agencies all focusing on helping patients and survivors, supporting their families, and providing potentially lifesaving information. Visit with exhibitors, listen to powerful speakers some professionals and some survivors, make bracelets and Pink Challah to support the cause, and shop accessories to spread the message and help support the fight. We invite

you to wear your best pink fashion item to show support.

This important community-wide event is sponsored by Sisterhood, with support by Beth Or Cares, Brotherhood, Social Action and the Beth Or Mental Health Task Force.



**Let's Talk Depression with Rachel Kauffman, LPC and Judith Kurtis LCSW, CCTP**

**Monday, October 24, 7 pm – 8 pm**

This is the first in a series of important Mental Health topics to be presented by the Beth Or Mental Health Task Force this year. Check your weekly email for details and RSVP.

## Beth Or Cares: Red Cross Blood Drive

**Sunday, October 30 • 9 am – 2 pm**

The Red Cross is in urgent need of all blood types. Beth Or consistently hosts one of the largest blood drives in the area. Register via the link on the website calendar or contact Stu Briefer at [smbriefer@gmail.com](mailto:smbriefer@gmail.com) or 215-661-9990. The blood drive is sponsored by Brotherhood.



## HIGH HOLY DAYS 5783

**Erev Rosh Hashanah • Sunday, September 25**

**Rosh Hashanah • Monday, September 26**

**2nd Day Rosh Hashanah • Tuesday, September 27**

**Kol Nidre • Tuesday, October 4**

**Yom Kippur • Wednesday, October 5**

Best wishes for a sweet and healthy new year!

**Visit our High Holy Days Headquarters:**

**[www.bethor.org/HHD2022](http://www.bethor.org/HHD2022) for:**

- Worship Schedule
- Forms (Ticket Request, Book of Remembrance, HHD Volunteer Participation)

**Deadline for all Forms: Friday, September 2**

- e-Ticket Information for your Family & Guests
- Order Kosher Wine from Brotherhood
- FAQs
- And more!

If you are not able to join us in person, all High Holy Days services can be watched on our Livestream site, <https://bethor.livecontrol.tv>

Bookmark the link as a favorite on your computer for easy access!

RSVP for each class using the link on the web calendar event listing or your weekly Chai Lights email. You may also contact Barbara Murtha, [bmurtha@bethor.org](mailto:bmurtha@bethor.org), 215-646-5806 ext. 220.

## SEPTEMBER/OCTOBER CLASSES

### Cooking with Gass

**Rosh Hashanah Main Dishes and Desserts •  
Sunday, September 18 • 9:30 am – 11 am**

**Fall Recipes • Tuesday, October 11 • 7 pm – 8:30 pm**

Alyson Gass teaches these hands-on classes in the Beth Or Kitchen. You'll learn how to make some of her favorite recipes that you are sure to love and pass along too! Space is limited. RSVP for either or both of the classes with Barbara Murtha, [bmurtha@bethor.org](mailto:bmurtha@bethor.org).

### Torah Study

**Saturday mornings starting October 22 •  
9:30 am – 10:30 am**

Join Rabbi Marx and Rabbi Bonder every Shabbat morning for an in-depth discussion on Jewish values as they impact on contemporary social issues. We will talk about such topics as animal rights, civility in the public square, consumerism and wealth, disability, human dignity, and love and marriage. Our tradition has so much to say that will bring us a new perspective on life. We will drill down and focus on the texts and the lessons that we can apply to our lives. No RSVP required.

### Adult Hebrew

**Mondays or Tuesdays starting October 24 or 25 •  
5:30 pm – 6 pm**

Are you interested in learning (or relearning) basic Hebrew reading? We'll be offering weekly adult Hebrew classes that meets for a half hour of your choice of Monday or Tuesday — no previous Hebrew knowledge is required! Our focus will be on learning to read with a goal of achieving siddur/prayer book literacy. Cost is \$18 for materials. RSVP to Aaron Nienshultz, [aaron@bethor.org](mailto:aaron@bethor.org).

### Introduction to Judaism

**Starting Tuesday, October 25 for 18 sessions •  
7 pm – 9 pm**

Open to all, this course is designed for those looking to understand the basics of Judaism. This includes interfaith couples, those raising Jewish children, spiritual seekers, individuals considering conversion, and Jews who want a meaningful adult Jewish learning experience. Wherever you are on your journey with Judaism, this class is designed to be a safe and welcoming place for you to explore.

Topics include holidays, life cycle celebrations, core beliefs, prayer, the Hebrew Bible and other Jewish sacred texts, history, antisemitism and the Holocaust, Israel, the North American Jewish experience, and the diversity of the Jewish people today. Cost: \$27 materials/book fee for Beth Or Members; \$180 course fee + \$27 materials fee for non-members. Advance RSVP required: [www.bethor.org/form/introjudaism2022-23.html](http://www.bethor.org/form/introjudaism2022-23.html)

### Two Jews from Ukraine Write Two Different Anthems for the State of Israel

**Tuesday, October 25 • 7 pm**

Join Rabbi Marx to review this topic and learn what did they affirm, why was one chosen over the other and what do they tell us about the vision of Israel today? Check your weekly email to RSVP in advance.







## *Celebrating Your Simcha*

Our beautiful building provides the perfect place to celebrate your family's simchas.

Our catering partners on the Approved Caterer List — shown below and published on our website ([www.bethor.org](http://www.bethor.org)) stand ready to provide delicious food for your event. They can provide menu options at a range of prices designed to meet your specific needs and budget.

We hope that you will consider having your celebrations at Beth Or. To learn more about hosting an event at Beth Or, please contact Amy Abrams or Jillian Peskin at 215-646-5806.

### **Approved Caterer List — 2022/23**

<b>Alyson's Sweet Petites • Alyson Gass</b> .....	973-732-0151
<b>Annemarie's Cuisine • Annemarie Silva</b> .....	215-806-7675
<b>Go2eventplanner • Arlene Rotfeld</b> .....	516-909-8580
<b>Catering by Design • Fred Morganstein</b> .....	610-405-9787
<b>Panache Catering by Foodarama (Kosher) • Gary Rosenwald</b> .....	215-633-7100
<b>Pumpernick's Deli • Jeff Klein</b> .....	215-393-5800
<b>The Gourmet Vendor • Brad Orenstein</b> .....	215-396-7000

# Annemarie's Cuisine

Be A Guest At Your Own Event

**CHEFS • SERVERS • BARTENDERS**

Baby Naming, Bris, Kiddush Lunch, Birthdays,  
Bar & Bat Mitzvah, Weddings, Showers,  
Graduations, Funerals, Shiva Dinners

**215-806-7675**

[www.annemariescuisine.com](http://www.annemariescuisine.com)

Email: [catering@annemariescuisine.com](mailto:catering@annemariescuisine.com)

*Looking forward to making your next event a success!*



# Go2eventplanner

[Go2eventplanner.com](http://Go2eventplanner.com)

Specializing in At-Home/Temple Catering  
and event coordination, with Custom Menus, and  
Artistic Presentation

**Engagements, Showers, Garden Weddings,  
Mitzvahs, Tent Parties**

Let's do Something Wonderful Together!

Arlene Rotfeld, CIA Food Stylist  
Cuisine | Staff | Chefs | Rentals | Design  
[go2eventplanner@gmail.com](mailto:go2eventplanner@gmail.com)  
516-909-8580



**CATERING**  
BY DESIGN  
+ garnish

# Panache Caterers

**BY FOODARAMA**

CATERING FOR ALL OCCASIONS—IN YOUR HOME, OFFICE, OR  
TEMPLE—FOR OVER 50 YEARS—CERTIFIED KOSHER



CALL FOR YOUR FREE MENU AND PARTY PLANNING GUIDE  
215-633-7100 888-309-3800

[WWW.FOODARAMA.COM](http://WWW.FOODARAMA.COM)

Extended kiddushes, mitzvahs, baby namings & more



**Infinity**  
CATERERS

(215) 509-7280  
[infinitycaterers.com](http://infinitycaterers.com)

4401 Cresson Street • Philadelphia PA 19127

**PUMPERNICK'S**  
DELICATESSEN  
RESTAURANT

Pumpernick's catering department guarantees to  
impress your guests. Smoked Fish, Deli, Sandwich, Wrap  
Trays and more. Bar/Bat Mitzvah's graduations, Birth-  
days, Sporting Events, Shiva Dinners and more.

**215-393-5800 • [pumpernicksdeli.com](http://pumpernicksdeli.com)**



# Chai-Lights — September/October 2022

## New Members

Brian, Harper Brody Zebrick & Brittany Bejel  
David Freireich & Sharon Herring  
Brian, Danielle, Scout & Bodhi Kooperman  
Rycki Freedman  
Richard & Joanne Greene  
Doran, Paige, Abby & Lily Meizlik  
Judith Plon  
Linda Joseph  
Rick Etskovitz, Karen Goldberg & Giselle Goldberg  
Alissa, Ryan, Peyton & Samantha Bruner  
Jeremy & Pamela Ginsberg  
Ryan, Heather, Mason & Ethan Gow  
Harold, Lisa & Ethan Buzgon  
Stuart, Aaron & Noah Greene & Rachel Eisenberg  
Steven, Jill, Leonard & Raymond Novosel  
Ian, Leigh, Belle & Emma Goldwasser

## Rejoining Members

Dustin, Jazmin, Reese & Ryder Rochestie  
Asa, Kathryn & Franklin Hersh  
Stan & Ellen Kloczek  
Matthew, Jennifer, Emily & Justin Manderachi

## May Their Memory Be A Blessing

Florence Hafter, mother of Robert Hafter  
Jerold Cohen, father of Mitchell Cohen  
Alvin L. Weiss, uncle of Evan Weiss  
Elaine Siniawsky Glauser Einbinder Cohen, grandmother of Steffany Moonaz & Matthew "MJ" Haaz  
Lita Talus, mother of Cheryl Talus Snyder  
Jay H. Levine, father of Ilene Berman  
Kirk Abrams, brother of Hank Abrams

Rita Rubin, mother of Sally Hurwitz  
Andrew "Andy" B. Hahn, brother of Lisa Kessler  
June Gross Knee, mother of Rob Knee  
Daniel Grossman, brother of Larry Grossman  
Roslyn Sukoff, mother of Alicia Fortunato  
Arthur Pomerantz, father of Lauren Schulz

## Mazel Tov

Engagement of Adam Bencan, son of Joel & Riss Bencan, to Danielle Williams  
Wedding of Rachel Rosenfeld, daughter of Jack & Linda Rosenfeld, to David Combs  
Wedding of Gwen Silverstein to Stephen Leonard

Birth of Emma Rose Guerin, granddaughter of Paul & Ann Beaulieu  
Birth of Hazel Adair Kuhn, granddaughter of Bobbi & Garry Adair  
Birth of Luca Adair, grandson of Garry & Bobbi Adair  
Bar Mitzvah of Xavier Berman  
Bar Mitzvah of Beck Rosenthal  
Bat Mitzvah of Rachel Harris  
B'not Mitzvah of Emma Rucker and Abby Rucker  
Bat Mitzvah of Sophia Gaffney  
Bat Mitzvah of Zoe Zielinski  
Bar Mitzvah of Daniel Iris  
Bat Mitzvah of Alexis Fredd  
Bat Mitzvah of Sarah Pliner  
Bar Mitzvah of Nate Pinchuk

## Oneg & Flower Donations

### September Donations

**September 9** • Joshua and Rachael Beman in honor of Xavier Berman's Bar Mitzvah  
• Chad and Jessica Rosenthal in honor of Beck Rosenthal's Bar Mitzvah  
**September 16** • Marc and Sione Harris in honor of Rachel Harris' Bat Mitzvah  
• David and Jill Rucker in honor of Emma and Abby Rucker's B'not Mitzvah

### October Donations

**October 7** • Andrew and Dana Gaffney in honor of Sophia Gaffney's Bat Mitzvah  
• Scott and Jen Zielinski in honor of Zoe Zielinski's Bat Mitzvah  
• Ariel and Julia Iris in honor of Daniel Iris' Bar Mitzvah  
**October 14** • Scott and Stefanie Fredd in honor of Alexis Fredd's Bat Mitzvah  
**October 21** • Brad and Debbie Pliner in honor of Sarah Pliner's Bat Mitzvah  
**October 28** • Tom Pinchuk and Tanya Vishnevsky in honor of Nate Pinchuk's Bar Mitzvah



# Memorials and Contributions

## Rabbi Marx's Discretionary Fund

---

### In Memory of

HERMAN LORBER  
Barbara Rosenthal  
BARRY CHASEN  
Carole Chasen  
NORMAN S. FELDMAN  
Ellen Perlmutter  
JULIAN LOEWENSTERN  
MADELENE LOEWENSTERN  
MARGARET (PEGGY) GELMAN  
LEON GELMAN  
Gary & Cindy Loewenstern  
RONALD ROSSMAN  
Heather Rossman & Austin  
Faberman  
CHERYL SCHLACKMAN  
Janice & Joel Chanen  
MARSHALL FREEDMAN  
Jay & Sue Freedman  
MELVIN GOODRICH  
Myrna Goodrich  
MAXINE ROSENFELD  
Philip & Merle Rosenfeld  
BEVERLY ITZKOWITZ  
Ted Itzkowitz  
RONALD ROSSMAN  
The Goodman-Woronoff  
Family

### In Honor of

WALTER KIRSZBRAUN's  
70th birthday  
Beth & Bernie Johl  
SUE & LEM's 60th  
Anniversary & SUE's Special  
Birthday  
PEARL TRAGASH for her  
Special Birthday  
Bonnie & Jack Rothstein  
ART COHN  
Janice & Joel Chanen  
HARVEY GITLIN's Big Birthday  
Lisa & Gus Belmont  
RABBI & LAURIE MARX  
Michael Snyder  
OUR 30TH WEDDING  
ANNIVERSARY  
Stuart & Brenda Briefer  
**In Appreciation of**  
RABBI MARX  
Peter & Ellen Harper  
Sue Chesney

## Rabbi Bonder's Discretionary Fund

---

### In Memory of

MURRAY GROSSMAN  
Larry & Joanne Grossman  
SUBIE SKOLNIK  
The Skolnik Family  
JEROLD COHEN  
Vickie & Bruce Neumann

### In Honor of

SKYLER E. GOLDBERG Baby  
Naming  
Erin Lubin  
Bat Mitzvah of RACHEL  
BROOKE JASNER  
Rhona Jasner  
RABBI JASON BONDER  
Robert, Stacey, Jaime &  
Andrew Katz

### In Appreciation of

RABBI BONDER  
Dana Neuman & Brian Novi  
Mark & Marjorie Zukerman  
Marsha & Steve Milakofsky  
Robert Hafter  
Susan Bellos  
SKYLER GOLDBERG's Baby  
Naming  
Stephanie & Norm Lubin  
RABBI BONDER &  
CONGREGATION BETH OR  
The Zauzmer Family

## Annual Appeal

---

### In Memory of

AARON BRAM  
Adam Bram

## Arnold Berkowitz Memorial Fund for Veteran's Shabbat

---

### In Memory of

BESS GREENBLATT  
GEORGE BIRON  
Elsa-Lu Berkowitz

### In Honor of

HARRIETT GREENBERG's  
90th Birthday  
Flo & Roger Lipitz & Alison  
& Arnold Richman  
Michael & Lana

## Barbara Goldberg Nursery School Fund

---

### In Memory of

WENDY TENGOOD  
CECE Sunshine Fund  
Marsha & Steve Milakofsky  
MYER BERNSTEIN  
Faye & Bob Miller  
RICKEY RUBIN  
Ilene Schneller, Dana  
Marion & Norm Cohen  
JERRY FREEDMAN  
Rachel, Matt, Alix & Dylan  
Silverman  
RONALD ROSSMAN  
Richard & Charla Wolfe

### In Honor of

HANNAH DIAMOND  
graduating FIT  
Ellen & Rodger Wichterman  
KAYLA receiving her doctorate  
& HANNAH receiving her  
bachelor's degree.  
Marsha & Steve Milakofsky

## Barbara & Marvin Goldberg Confirmation Israel Trip Endowment

---

### In Memory of

MYRNA ORMAN  
Bob & Faye Miller

## Caring Congregants Fund

---

### In Memory of

JERRY COHEN  
Candice Chachkin & Bryan  
Beauchamp  
RITA RUBIN  
GEORGE BIRON  
MYER BERNSTEIN  
ALVIN WEISS  
Ellen Werther  
PEARL SALIN  
Gay Salin  
LITA TALUS  
ALAN COLLESTER  
Judy & Jon Beck  
ALVIN WEISS  
Karen & Rick Leavitt  
RITA RUBIN  
Neen Davis  
ESTHER KAYE  
The Boas Family

### In Honor of

ART COHN's 2nd Bar Mitzvah  
Marriage of GWEN  
SILVERSTEIN & STEPHEN  
LEONARD  
Ellen Werther  
ESTHER PLOTKIN's Special  
Birthday  
Judy & Jon Beck

### Speedy Recovery to

BOB HIRSCH  
Ellen Werther

## Disaster Relief Fund

---

### In Memory of

JOHN TABOR  
Karen Tabor

### In Appreciation of

CANTOR GREEN  
Marsha & Steve Milakofsky

## Ellen & Norman Werther Endowment Fund for Special Programs

---

### In Memory of

ROSE KUNIN  
Amanda & Don Berry

## Friends of IDF Fund

---

### In Memory of

DR. JERRY COHEN  
Margie Chachkin  
ZOE GOREN  
Robert & Susan Silverstein

### In Honor of

STEPHEN & GWEN's Marriage  
Aunt Sue & Uncle Ken

## General Fund

---

### In Memory of

DR. GEORGE BIRON  
Dennis Saile  
JUNE KNEE  
Larry & Bonnie Seidman  
FLORENCE AFTER  
Lisa & Barry Cohen  
RONALD ROSSMAN  
Lisa Rovner  
ALVIN WEISS  
Lynne Casper  
MYER BERNSTEIN  
EVELYN ROBINSON  
JERRY COHEN  
Nancy & Joel Scudder

### In Honor of

ART COHN's 2nd Bar Mitzvah  
Merle & Phil Rosenfeld



## Memorials and Contributions

### Goldsteins' Rosenberg's Raphael-Sacks BOR Endowment

**In Memory of**  
RONALD ROSSMAN  
Tabakin Family

### The Hannah Miller Book & Education Fund

**In Memory of**  
GOODWIN "GOODY" SCULKY  
Ilene & Larry Stella

**In Honor of**  
JAKE & RYAN WIENER's  
B'nai Mitzvah  
Hannah & Bob Fishman  
ROBIN SECOULER's Birthday  
Lorraine Secouler

### Israel Emergency Fund

**In Memory of**  
JERRY COHEN  
Robert & Susan Silverstein

**In Honor of**  
BEN & SHAYNA's marriage &  
JULIE & GABE's anniversary  
Margie Chachkin

### Jacob's Ladder Fund

**Mazel Tov to**  
JAN & BOB ZAUZMER  
Sylvia Chachkin

### Jenna Demar Educational Fund

**In Appreciation of**  
MIKE & MELANIE DEMAR  
Marsha & Steve Milakofsky

### Kate Svitek Memorial Garden Fund

**In Memory of**  
MYER BERNSTEIN  
Andi & Tod Drucker  
ELLIE SKLENAR  
Andy & Bob Sklenar  
HOPE CLAIR  
Frank & Ellen Svitek  
MOLLIE LANDER  
Madeline Lander  
JERRY COHEN  
Mindy Pollikoff  
Lois Bernstein  
IRA FLITTER  
Nancy & Cary Flitter  
HERBERT SKLENAR  
Robert & Andrea Sklenar  
FLORA KRIMKER  
Saragovi Family

### Linda Gerson Memorial Fund for Grounds' Beautification

**In Memory of**  
MARTIN WEINTRAUB  
Phil Gerson & family

**In Honor of**  
PHIL GERSON's Birthday &  
Father's Day  
Marilyn Weintraub & Family

### Lore Heinsheimer Memorial Youth Assistance Fund

**In Honor of**  
RACHEL JASNER becoming  
a Bat Mitzvah  
Sharon Labow

### M & M Family & Youth Programming Initiative Fund

**In Memory of**  
ARTHUR POMERANTZ  
The Klaskins - Judy & Bruce,  
Eben & Susan, Seth, Robyn  
& girls, Jason & Tobi

### Meals That Matter Fund

**In Memory of**  
MYER BERNSTEIN  
Andrea & Allan Papsin  
Bonnie Dicristofaro  
Claire Schwartz  
David & Pamela Starfield  
ESTHER SOLOMON  
Mark & Elaine Solomon  
MORRIS FISHER  
Sheila & Bill Ritchey  
DR. JERRY COHEN  
Sylvia Chachkin

**In Honor of**  
ABBY GILBERT's Birthday  
Margie Chachkin

**Congratulations to**  
AARON PHILIP MARGOLIS  
becoming a Bar Mitzvah  
Shelli Ross

### Music Fund

**In Memory of**  
BERNICE SPECTOR  
Linda & Jack Rosenfeld

**In Honor of**  
CANTOR GREEN  
Carol Biron  
Engagement of ADAM  
BENCAN & DANIELLE  
WILLIAMS  
Ellen Werther  
ANDY COHN's special  
birthday  
Sheila & Bill Ritchey

### Natan Luehrmann- Cowen Jr. Choir Endowment Fund

**In Honor of**  
MIA & BEN  
Wendy Axelrod & Andy  
Johanson

### Reuben R. Wolfert Memorial Fund for Scholastic Excellence

**In Honor of**  
LEM & SUE TARSHIS' 60th  
Anniversary  
ELAINE GOLDFIELD's  
Birthday  
Marian Wolfert

### Yahrzeit Fund

**In Memory of**  
RAPHAEL BECKER  
Andrea Becker-Arnold,  
Joseph Arnold & Family  
MARY RUCHE  
Barbara & William  
Shoulberg  
LOTTIE JOHL  
Beth & Bernie Johl  
SARI PORTMAN  
Carol & David Udis  
JEAN BARON  
Carol Halbert  
DANNY CARROLL  
LOUIS GREENBERG  
Edythe & Samuel Newman  
& Family

ALFRED EDELSON  
Gail Edelson  
DOROTHY WEISER  
Herbert & Renee Cohen  
DEBORAH BARSH  
Horace Barsh  
LUBA SHTASEL  
HYMAN SOLL  
Jean Soll  
ALBERT SHTASEL  
LIONEL PLON  
Judith Plon  
FREDA HORENSTEIN  
Ken Horenstein  
MORRIS FARBER  
LOIS FARBER  
Les & Eileen Seskin  
WINNIE SHARP  
Lila & Harry Schultz  
MORRIS KATZ  
Lori & John Happ  
EVELYN JACOBS  
JULIUS LOKIETZ  
ROSE SALZBERG  
Lorna & Dave Petersen  
EDWIN FORTI  
Matthew Forti  
IRVING ISSADORE  
Michelle Issadore  
DAVE DAVIS  
Neen Davis  
MOLLYE D. FELDMAN  
Paul Feldman & Bryna  
Singer  
ABE SNYDERMAN  
Paul & Dale Snyderman  
DR. STEPHEN FUDELL  
BEATRICE TAUBER  
JACK TAUBER  
Roz Fudell  
MARVIN DESSNER  
Sue Dessner  
EMILY GARBOSE  
William & Lynne Garbose



## PLAN AHEAD FOR *peace of mind.*

**MANY OF US DON'T REALIZE HOW IMPORTANT** remembrance is to those who love us. That's why we recommend that you consider cemetery options now, before the time of need. From burial and cremation options to mausoleums and custom estates, your Dignity Memorial® professionals are here to help you create a meaningful memorial that honors your faith and traditions.

Dignity®  
MEMORIAL

✧ LIFE WELL CELEBRATED® ✧

### ROOSEVELT

MEMORIAL PARK

#### TREVOSE

[RooseveltMemorialPark.com](http://RooseveltMemorialPark.com)

215-673-7500

Leah Feldman, General Manager

### FOREST HILLS / SHALOM

MEMORIAL PARK

HUNTINGDON VALLEY

[ForestHillsShalom.com](http://ForestHillsShalom.com)

215-673-5800

Samuel Dornsky, General Manager

### WHITEMARSH

MEMORIAL PARK

#### AMBLER

[WhitemarshMemorialPark.com](http://WhitemarshMemorialPark.com)

215-646-7500

Lauren Scudieri, General Manager





*Life is a journey...not a destination*

**Providing funeral counseling and pre-need arrangements.**

Pre-planning a funeral is a gift. Anyone who has ever lost a loved one knows how hard it is to make decisions at a time of grief. Let your family know your wishes, don't burden them with the costs of a funeral, and allow them to celebrate the life you lived. Our experienced funeral directors can guide you through the process, and assist you in making tough decisions.

**PHILADELPHIA CHAPEL**  
Carl Goldstein, Supervisor  
6410 N. Broad Street  
Philadelphia, PA 19126

**SUBURBAN NORTH CHAPEL**  
Bruce Goldstein, Supervisor  
310 2nd Street Pike  
Southampton, PA 18966

**ROTH-GOLDSTEIN'S' MEMORIAL CHAPEL**  
Stephen Collins, NJ Mgr. Lic No. 3355  
116 Pacific Ave  
Atlantic City, NJ 08401

*Southern NJ Chapels Available*



**Caring. Committed. Compassionate.**

**215-927-5800 • 800-622-6410**

*For deaf and hard of hearing 267-331-4243 (Sorenson VP)*

**[www.GoldsteinsFuneral.com](http://www.GoldsteinsFuneral.com)**



# CAMP GREEN LANE

Located in Green Lane, PA

Experts in creating memories and friendships that last a lifetime — since 1926.

Exciting special events and out-of-camp trips!



Become a part of our Camp Green Lane family!

**215-234-9211**

**info@greenlane.com • www.greenlane.com**

Melissa and Jay Freedman and Rene and Adam Weiner  
Owners/Directors



**Independent Senior Living Advisors**

**S<sup>3</sup>LIVING**  
REAL ESTATE

**THINKING ABOUT –**

- Moving?
- Moving to Independent Senior Living?
- Selling your home?

**THINK ABOUT –**  
**S<sup>3</sup>Living** **Strategic Senior Solutions**

**S<sup>3</sup>Living** helps Active Adults find the perfect 55+ Community or Life Plan Community (CRRC).

**S<sup>3</sup>Living** represents **YOU**, not the communities. We will recommend the best solution to meet your individual needs.

Call the Delaware Valley's leading expert on Independent Senior Living

**David Reibstein, President**

**215-870-7362**

Call today for a free consultation

**S3Living.com**

**MID PENN BANK<sup>®</sup>**

**1-866-642-7736 | midpennbank.com**

Member FDIC



## Shopping On Line? You Shop. Amazon Gives to Beth Or.

Visit **smile.amazon.com** and search for **Congregation Beth Or** to designate as your charitable organization.

Once you sign up for our unique link, 0.5% of the price for all eligible purchases benefits our community.

Be sure to bookmark **smile.amazon.com** on your computer and use it each time you shop!  
Only purchases made at **smile.amazon.com** are eligible for donation.



**★ SESAME DAY CAMP**  
**★ CAMP ROCKWOOD**

**SRC**  
**SESAME ROCKWOOD CAMPS**  
FRIENDS HAPPEN HERE™

**★ ROCKWOOD ADVENTURES TEEN TRAVEL**

- Day Camp: 4 to 8 Week Sessions
- Mini-Day Option (3, 4, & 5 year olds)
- American Red Cross Swim Program
- Arts & Outdoor Adventure Activities
- Extensive Sports Program
- Great Lunches & Snacks & Much More!
- Teen Travel Program: 1 to 7 Week Options for 6th through 10th Grades
- Door-to-Door Transportation

*Offering Your Child the Finest in Caring Staff,  
Diverse Programming & Outstanding Facilities.*

Howard & Dale Batterman,  
Owners/Directors

**610.275.CAMP** **www.srdaycamps.com**

ACCREDITED

The advertisement is a colorful collage featuring various photos of children at camp. At the top left, a boy is jumping in the air. Below him, a group of children are on a roller coaster. In the center, there are photos of children wearing swim caps and goggles, and a group of children wearing hard hats. On the right side, a boy is playing basketball, and below him, a girl is playing frisbee. At the bottom right, a group of girls are smiling. The background of the central text area shows a map of the camp's location.



**&M**  
**ORTHODONTICS**  
[www.bracesdocs.com](http://www.bracesdocs.com)

Doylestown  
215.238.5301

Glenside  
215.885.6020

Perkasie  
215.257.5331

**G**reat smiles  
begin with...  
**Dr. Jamie  
Goodreau**  
Specialist in Orthodontics

- Certified Invisalign Orthodontist
- Treatment of Children & Adults
- TMJ Treatment

Call today for a  
**FREE Consultation!**  
**(215) 997-0200**  
**drgoodreau.com**

**Affordable  
Payment Plans**

*Now Participating  
With Many Major Insurance  
Companies*



**LOCATION:**  
HighPoint Business Center  
1300 Horizon Drive  
Suite 117  
Chalfont, PA 18914



# CAMP AMERICA DAY CAMP



*"Creating life-long friendships since summer 1967"*

[www.camp-america.com](http://www.camp-america.com)

215-822-6313



**Fun • Friendship • Forever**

[www.elbowlane.com](http://www.elbowlane.com)

215-343-2120



# JOSEPH *Levine* & SONS

SERVICE • TRADITION • DIGNITY

1002 West Skippack Pike  
Blue Bell, PA 19422  
(215) 942-4700

Joseph Levine & Sons, Inc.  
Jonathan D. Levine, Supervisor  
4737 Street Road  
Trevose, PA 19053  
(215) 942-4700

Joseph Levine & Sons, Inc.  
Kevin Bloch, Supervisor  
2811 West Chester Pike  
Broomall, PA 19008  
(610) 325-2000

Haym Salomon Memorial Park  
Adam D. Levine  
A Levine Family Company  
200 Moores Road  
Frazer, PA 19355  
(610) 644-1100

Now serving Whitpain Township  
and the surrounding communities



# Beth Or Spotlight

September-October 2022 | Volume 67, Issue 1 | Elul-Tishrei-Cheshvan

239 Welsh Road, Maple Glen, PA 19002

Phone: 215-646-5806 | Fax: 215-646-0173 | Website: [www.bethor.org](http://www.bethor.org)

Senior Rabbi ..... Gregory S. Marx  
Associate Rabbi ..... Jason Bonder  
Interim Cantor/Jr. Choir Director ..... Jaime Murley  
Executive Director ..... Amy S. Abrams  
Director of Religious School ..... Aaron Nielsenshultz  
Early Childhood Director ..... Sara Baum  
Asst. Early Childhood Director ..... Sharon Carlin  
Director of Accounting ..... Suzanne Diamond  
Director of Marketing & Communications ..... Judy Trias  
Director of Member/Youth Engagement ..... Jillian Peskin  
Youth Engagement Advisor ..... Rachel Shapiro  
Cantor Emeritus ..... David Green  
Executive Director Emerita ..... Elizabeth L. Hirsch, F.T.A.

President ..... Gwen Silverstein  
Vice President ..... Leslie Weiss  
Vice President ..... Alyson Caplan  
Vice President ..... David Simon  
Treasurer ..... Evan Segal  
Assistant Treasurer ..... Doug Burtnick  
Parliamentarian ..... Jennie Nerenberg  
Secretary ..... Lisa Rosan  
Brotherhood President ..... Doug Burtnick  
Sisterhood President ..... Melisa Lubinski  
Beth Or Spotlight Editors ..... Ellen Werther/Judy Trias



## Are you or someone you know interested in working with young children?

The Zipporah S. Abramson Center for Early Childhood Education (CECE) is a top-rated preschool with a warm, wonderful and dedicated staff caring for lovely and inquisitive children.

**We have immediate openings for full-time, part-time and substitute teachers to join us in our mission of instilling a love of learning.**

The CECE includes children 3-months - K and is based on the belief that a child's development in the first years is crucial for later development and success. Our program addresses the needs of young children and provides a rich curriculum that works for the whole of the child.

- Good salary and excellent benefits
- Experience in Early Childhood education is preferred
- Must be 18 years or older
- Flexible schedules available

**NEW BENEFIT: Complimentary Beth Or Membership for all Staff.**  
(Restrictions apply)

**CONTACT CECE DIRECTOR, SARA BAUM, [SBAUM@BETHOR.ORG](mailto:SBAUM@BETHOR.ORG)**  
for additional information and to set up an interview

