



Beth Or Spotlight

September-October 2021 | Volume 66, Issue 1 | Elul-Tishrei-Heshvan



To protect the health of our congregation and in light of rising infection rate in our area, all Shabbat Worship services prior to the High Holy Days will be virtual-only. Beginning 9/17, services will have limited in-person attendance with RSVP and mask wearing required along with the virtual viewing options. Check your weekly Community Matters email for the most up to date information each week.

Remote Viewing: ■ All indoor services will be Livestreamed.

■ Friday evening services can be viewed via Livestream and Facebook Live.

■ Saturday morning services with B'nai Mitzvah can be viewed via Livestream.

Bookmark the Beth Or Livestream site, <https://bethor.livecontrol.tv/> as a favorite on your computer so you can easily access it whenever you are watching remotely.

September Worship Schedule

Wednesday, September 1 & Thursday, September 2

9 am–7 pm Sweet New Year Bag &
Mishkan HaNeFesh Pick-Up – Main
Entrance, RSVP required

Friday, September 3 Shabbat Nitzavim

6:30 pm Family Shabbat Worship •
Livestream and Facebook Live

7:30 pm Kabbalat Shabbat Worship •
Facebook Live

Saturday, September 4

11:00 am Shabbat Worship

Monday, September 6 Erev Rosh Hashanah

8:00 pm Erev Rosh Hashanah
Worship • *Livestream*

Tuesday, September 7 Rosh Hashanah

Anytime Guided Rosh Hashanah
Walk/Run with Rabbi Bonder •
Audio Link

Anytime Music of HHD Recording •
YouTube video link

8:30 am Tot Service with Rabbi
Bonder & Cantor Murley •
Facebook Live

10:00 am Rosh Hashanah Worship •
Livestream

1:00 pm Rabbi Marx Sermon
Discussion • *Zoom with
Pre-registration*

2:30 pm Tashlich – Lakeside Terrace

3:00 pm Rosh Hashanah Family
Worship • *Livestream*

4:00 pm Tashlich – Lakeside Terrace

Wednesday, September 8 2nd Day Rosh Hashanah

10:00 am 2nd Day Rosh Hashanah
Worship • *Livestream*

1:00 pm Rabbi Bonder Sermon
Discussion • *Zoom with
Pre-registration*

Thursday, September 9 Opening Day of CECE

Shofar/Singing Welcome Event for
Young Families – Outside of CECE

Friday, September 10 Shabbat Vayelech

7:30 pm Shabbat Worship •
Livestream and Facebook Live

Saturday, September 11

11:00 am Shabbat Worship

Sunday, September 12 & Monday, September 13

9 am–7 pm Sweet New Year Bag &
Yom Kippur Prayer Book & Yizkor
Booklet Pick Up – Main Entrance,
RSVP Required

Wednesday, September 15 Kol Nidre

8:00 pm Kol Nidre Service •
Livestream

Thursday, September 16 Yom Kippur

Anytime Guided Yom Kippur
Morning Meditation with Rabbi
Bonder • *Audio Link*

Anytime Music of the HHD Recording
• *YouTube video link*

8:30 am Tot Service with Rabbi
Bonder & Cantor Murley •
Facebook Live

10:00 am Yom Kippur Worship Service
• *Livestream*

1:00 pm Rabbi Marx Sermon
Discussion • *Zoom with
Pre-registration*

2:00 pm Study Session #1 • *Zoom
with Pre-registration*

3:00 pm Family Yom Kippur Worship •
Livestream

3:00 pm Study Session #2 • *Zoom
with Pre-registration*

4:00 pm Afternoon Minchah •
Livestream

5:15 pm Yizkor • *Livestream*

5:45 pm Neilah & Conclusion •
Livestream

Friday, September 17 Shabbat Haazinu

7:30 pm Shabbat Worship in the
Gitlin Sanctuary • *Livestream and
Facebook Live*

Saturday, September 18

9:00 am Shabbat Worship with
the Bat Mitzvah of Alexa Cohen,
daughter of Jonathan and Amanda
Cohen

11:00 am Shabbat Worship with the
B'nai Mitzvah of Matthew Appleton,
son of David and Aimee Appleton
and Saige Baron, daughter of Josh
and Lauren Baron

Monday, September 20 Erev Sukkot

6:30 pm Welcome to our Tent in the
Goldstein Sukkah with Lulav, Etrog
& Song

Tuesday, September 21 Sukkot

9:00 am Sukkot Worship in the Gitlin
Sanctuary • *Livestream*

Friday, September 24 Shabbat

- 5:30 pm Sushi, Sake, Sukkah (and Soccer) in the Parking Lot
- 7:00 pm Shabbat Worship Outdoors - no virtual viewing option. (If weather is inclement, we will move inside and start at 7:30pm with Livestream/Facebook Live.)

Saturday, September 25

- 9:00 am Shabbat Worship with the Bar Mitzvah of Evan Cohen, son of Mitchell and Tracey Cohen
- 11:00 am Shabbat Worship with the B'nai Mitzvah of Charlie Harbour, son of Tyler and Maggie Harbour and Andrew Shakespeare, son of Eric and Nicole Shakespeare

Monday, September 27 Erev Simchat Torah

- 6:30 pm Erev Simchat Torah Worship and Consecration • *Livestream*
- 7:15 pm Israeli Dancing with RAK-DAN – Outdoors

Tuesday, September 28 Simchat Torah

- 9:00 am Simchat Torah Worship & Yizkor • *Livestream*

October Worship Schedule

Friday, October 1 Shabbat Bereshit

- 5:30 pm Munchkin Minyan – 4's • *Facebook Live*
- 6:30 pm Family Worship in the Gitlin Sanctuary • *Livestream and Facebook Live*
- 7:30 pm Kabbalat Shabbat • *Facebook Live*

Saturday, October 2

- 9:00 am Shabbat Worship with the Bar Mitzvah of Avery Bohm, son of David and Stefani Bohm in the Gitlin Sanctuary
- 9:30 am Torah Study
- 11:00 am Shabbat Worship with the Bat Mitzvah of Emmy Schurr, daughter of Todd and Shawn Schurr in the Gitlin Sanctuary

Friday October 8 Shabbat Noah

- 7:30 pm Shabbat Worship in the Gitlin Sanctuary • *Livestream and Facebook Live*

Saturday, October 9

- 9:30 am Torah Study
- 11:00 am Shabbat Worship with the B'nai Mitzvah of Camryn Horwitz, daughter of Seth and Dayna Horwitz and Brayden Weiss, son of Steven and Hallie Weiss in the Gitlin Sanctuary

Friday, October 15 Shabbat Lech-Lecha

- 7:30 pm Shabbat Worship in the Gitlin Sanctuary • *Livestream and Facebook Live*

Saturday, October 16

- 9:00 am Shabbat Worship with the Bat Mitzvah of Morgan Bloom, daughter of Warren and Pam Bloom in the Gitlin Sanctuary
- 9:30 am Torah Study
- 11:00 am Shabbat Worship with the Bar Mitzvah of Joshua Gladstone, son of Adam and Marne Gladstone in the Gitlin Sanctuary

Friday, October 22 Shabbat Vayera

- 7:30 pm Shabbat Worship in the Gitlin Sanctuary • *Livestream and Facebook Live*

Saturday, October 23

- 9:30 am Torah Study
- 11:00 am Shabbat Worship • *Livestream*
- 11:00 am Heart & Soul Shabbat

Friday, October 29 Shabbat Hayei-Sarah

- 7:30 pm – Shabbat Worship in the Gitlin Sanctuary • *Livestream and Facebook Live*

Saturday, October 30

- 9:30 am Torah Study
- 11:00 am Shabbat Worship with the Bar Mitzvah of Luke Factor, son of Glenn Factor and Trista Factor

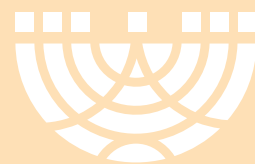


Table of Contents

| | |
|---|---------|
| September & October Worship Schedule | IFC & 1 |
| Table of Contents | 1 |
| From the Rabbi's Desk/ Rabbi Gregory S. Marx | 2 |
| President's Corner/ Gwen Silverstein | 3 |
| Candle Lighting Times | 3 |
| From the Rabbi's Desk/ Rabbi Jason Bonder | 4 |
| From Cantor David Green | 5 |
| Beth Or Cares | 6 |
| Religious School News & Important Dates | 7 |
| Early Childhood Education | 8 |
| Youth Engagement | 9 |
| Junior Choir | 10 |
| ShulCloud Member Database FAQs | 11 |
| B'nai Mitzvah Projects | 12 & 13 |
| Social Action | 14 |
| Get Connected | 15 |
| Brotherhood | 16 |
| Sisterhood | 17 |
| Events | 18-20 |
| Lifelong Learning Classes | 21 |
| Celebrate Your Simcha | 22 & 23 |
| Chai Lights & Flower Donations | 24 |
| Memorials & Contributions | 25 & 26 |

A Hero in Our Time

Rabbi Gregory S. Marx, Senior Rabbi

President Biden has nominated Deborah Lippstadt, Emory University Holocaust historian, to be the State Department's special envoy to combat antisemitism. A little history: On September 5, 1996, Holocaust denier David Irving sued Dr. Lippstadt for libel. She wrote in her book, *Denying the Holocaust*, that his writings and public statements constituted Holocaust denial. Irving stated that the Holocaust was a Jewish fabrication. Lippstadt won the lawsuit. So did the survivors. So did truth.

Professor Lippstadt models faith, strength, wisdom and patriotism. She has demonstrated that she can be fully American and Jewish, being chosen not because she hid her faith in favor of Americanism, but rather because by observing her faith, she affirmed the true spirit of being an American. We are a people of many faiths and practices.



Rabbi Gregory S. Marx

From the Rabbi's Desk

It bases itself on imagining a Jewish conspiracy to influence and run the world. It is "punching up," singling out the Jews for special opprobrium because of our perceived strength. Unlike racism which sees some communities as inferior to whites, anti-Semitism assumes that Jews are more powerful, more intelligent, and more manipulative than everyone else and therefore cannot be accepted or trusted.

Consider the anti-Jewish paranoia of Louis Farrakhan who said, "It is now becoming apparent that there were many Israeli and Zionist Jews in key roles in the 9/11 attack." Or, for that matter, the incoherent blather of Rep. Marjorie Taylor Greene, with her fantasies about Jewish lasers from space.

When it comes to antisemitism, it's as if we are living in medieval times. Professor Lippstadt identifies hate in both the radical left and right. As Prof. Lippstadt writes: "Fundamental to the radical left's world view is an automatic knee-jerk sympathy for anyone who is or appears to be oppressed or an underdog. Those who fight with rocks are always preferred to those who use tanks ... anyone white, wealthy, or associated with a group that seems to be privileged cannot be a victim. Anyone who is or claims to be victimized by those who are white, wealthy, and/or privileged deserves unequivocal support. Whether or not an ally is a Jew hater is irrelevant as long as other positions on class, race, capitalism, the role of the state, and Israel/Palestine are to their liking."

Lippstadt sees similar challenges on the right. She laments that the radical right which inspired white nationalists in Charlottesville or the murders in the synagogues of Pittsburgh and Poway are increasingly gaining traction in mainstream political and social circles. The fringe right, which believes that minority groups, especially the Jews are "replacing" Christian America is now moving to the mainstream and that is not good for anyone. We are getting squeezed from both sides.

Most of all, Prof. Lippstadt teaches that if we only see the anti-Semitism on the other side of the political divide, we are deliberately choosing to be blind in one political eye. Conservatives are quick to point out the anti-Israelism on the left. They cry out against Reps. Ilhan Omar, AOC and Rashida Tlaib. They are less quick to scream about the wackiness and terrifying rantings of Rep. Greene. The left will condemn President Trump, while failing to see that "wokeness" and "intersectionality" too often translates into knee jerk condemnation of Israel.

We must take anti-Semitism seriously, according to Lippstadt, but fighting hatred must not be the reason why we are Jewish. We diminish our faith if we understand it primarily as combating hatred and not acclaiming our covenant with God and our calling to repair the world. Or, to put it another way: "Judaism is not about how 'they' hate us. It is about how God loves us."

We could not ask for a better ambassador for Jewish and human interests.

"Unprecedented"

Gwen Silverstein, Beth Or President

"Unprecedented." If you are a human, I am almost certain that this word appeared in 75% of emails, printed matter, TV, etc. throughout this past calendar year. This percentage is backed by no scientific evidence, but just stay with me. Unprecedented is defined by Oxford Languages as "never done or known before." In reference to this past year, and in relation to the Covid-19 pandemic that paralyzed our world, it does seem that this is a fitting word to open all of your emails with. What the word unprecedented does not do sufficiently is acknowledge the immense loss, heartbreak, unrest, and fear that all of us experienced in one way or another.

I would be remiss if I took my task of writing an article about all of the amazing things that Beth Or has accomplished and failed to acknowledge the root of such. As part of the leadership of this congregation, I would also be remiss if I did not acknowledge the pivotal role each and every one of you played in turning this "unprecedented" year into one that we will talk about to future generations for the remainder of our lifetimes. Below, I have collected some informal statistics to capture what we, as a community, were able to do under "never known" and "never done before" circumstances.



Gwen Silverstein

President's Corner

Currently, in the Beth Or community, we are blessed with 961 members. The number 961 is merely a representation of the number of "family units" that we are lucky enough to call members of our bigger Beth Or family.

For example, a family unit may consist of eight people or it may consist of one. Regardless, we are thankful for you and I am thankful for you.

Many of you are familiar with the CECE Camp Chaverim that restarted in July, 2020. When we restarted camp, we were lucky enough to have 30 eager campers. In Summer 2021, CECE Camp Chaverim had 130 campers, and it was a summer like never before.

One of the biggest shifts our congregation underwent this past year was our transition to a virtual sanctuary. We took our eleven rows and replaced them with computers, iPads, and phones. Our reach was almost tripled, touching all corners of the country and allowing new individuals to experience the Beth Or magic. With this, our Saturday Torah study with the clergy saw "unprecedented" numbers and allowed us to create a unique, and memorable session for all in attendance.

If I haven't impressed you with these statistics yet, allow me one more chance. Throughout the last calendar year, the Beth Or hosted an incredible 2,082 Zoom meetings that were attended by 22,178 loyal congregants.

As simple as it may seem, I want to express my deepest gratitude to all of you for being loyal and maintaining your commitment to your Beth Or family. No matter what the next year may bring us, I will look back on these months with a deepened sense of appreciation for our Beth Or community.

September/October Candle Lighting

Friday, September 3 • 7:10 pm

Friday, September 10 • 6:59 pm

Friday, September 17 • 6:47 pm

Friday, September 24 • 6:36 pm

Friday, October 1 • 6:24 pm

Friday, October 8 • 6:13 pm

Friday, October 15 • 6:03 pm

Friday, October 22 • 5:53 pm

Friday, October 29 • 5:43 pm





Rabbi Jason Bonder

From the Rabbi's Desk

Our house of light often functions as a *Havdalah* candle. Our community and our space serve as a refuge from the ordinary.

The Sacred and the Ordinary

Rabbi Jason Bonder, Associate Rabbi

In “The Sacred and the Profane: The Nature of Religion,” the scholar and novelist Mircea Eliade described that at the core of every religion is the human need to find holiness in an otherwise ordinary and repetitive existence. What does Judaism have to say about Eliade’s statement? We’ve got a ritual for that.

Havdalah is the ceremony when we bid farewell to Shabbat and usher in a new week. After we say blessings over the wine, sweet-smelling spices, and a multi-wicked candle, we say a blessing praising God for differentiating between the sacred and the ordinary. As the holiest day of the week comes to a close, the *Havdalah* ritual reminds us that if we want to behave in a way that brings out the divine spark within us, we can make it our objective during the six ordinary days of the week to search for the sacred in the mundane.

Our house of light often functions as a *Havdalah* candle. Our community and our space serve as a refuge from the ordinary.

Walking into the building, seeing the plaques on the walls with the names of those who helped build our community, hearing the sounds of people greeting one another, all these things fill us with the promise that we are a part of something extraordinary. As members of this community we help each other identify that which is most sacred in our lives — family, tradition, learning, purpose, justice, service to others, and so much more.

As we lead up to the beginning of 5782, our Jewish tradition asks us to think about how to make ourselves better. Often, we resolve to act differently in service of our goals. This year, I invite you to consider concentrating not on action, but on noticing. Perhaps, this year, you make it your goal to notice the sacred in the everyday. You might even keep a list of what you find. The more we notice the extraordinary, the more we will be inclined to seek it out. The more we seek it out, the more likely we are to live lives of meaning. It is from a burning desire to live a life of meaning that the right actions will naturally come forth.

Havdalah is one of my very favorite Jewish rituals, and I hope to bring many opportunities into our community to make *Havdalah* together in the year to come.

Stop and Smell the Roses on the High Holy Days?

Cantor David Green



Cantor David Green

Although “Stop and Smell the Roses” has probably been overused, the High Holy Days are a perfect time to really put this phrase into action. During the Holy Days we reflect and look at our lives. Do we stop to enjoy life and appreciate it? With the challenges of the Pandemic and the everyday ups and downs of life, this is often difficult to do.

Our Jewish sacred texts and traditions provide us with a GPS to help us through this journey. One 19th Century rabbi stated: “When I went to meet my Maker, God asked me: Why didn’t you see the Alps?” Apparently, this individual had opportunities while he was alive to do this. Now the opportunity had passed and therefore, the individual missed the chance to “smell the roses.”

Our tradition tells us that we should recite 100 blessings a day. Judaism teaches us there is a blessing for almost everything. When we recite the *b’rachot* (blessings) it creates a moment where we can appreciate even mundane and routine things. A perfect example of this is the *Nl’sim B’Chol Yom* (For Daily Miracles). Our *siddur* states: “These morning blessings evoke wonder at awakening to physical life: we open our eyes, clothe our bodies, and walk again with purpose...”

Another example is the *Modim Anachnu Lach* also found in our *siddur*. Here, we are asked to experience both the big and little events of our lives, human endeavors, what is happening in our world and even in our universe. Certainly this is most evident, when the prayer states: “For the joy of human life, its wonders and surprises, its hopes and achievements.”

Of course, we should exercise these traditions every day, not just during the High Holy Days. Maybe the *Yom Tovim* is a good time to initiate or restart the “smelling of roses.”



Beth Or Cares

Stu Briefer, Beth Or Cares Chair

Our “House of Light” shines and focuses not only on the religious and faithful aspect of our congregational family, but also on their overall health. As a community, we care for each other, watch out for each other, celebrate with each other, and keep each other healthy. This fall, we are focused on two important topics (refer to your weekly emails for program dates, times & details):

Heart Health Awareness

Heart disease is one of the most widespread and complicated health challenges. Too often, the only sign of heart disease is sudden death. Almost 2 years ago, Brotherhood lost a member exactly like this. This person exercised regularly, didn’t drink, didn’t smoke, wasn’t overweight and had a healthy diet. Sadly, he died suddenly with no warning signs or symptoms. How could this have happened to someone so young, vital, and seemingly healthy? During our Heart-Health workshop we will create self-care checklists, learn heart-healthy recipes, wellness routines and more.

Genetic Disease Testing

Genetic testing involves examining the DNA, which is the chemical database that carries instructions for your body’s functions. Genetic testing can reveal abnormalities in your genes that may cause illness or disease. Examples of carrier screening may include sickle cell anemia, Tay-Sachs disease, Duchenne muscular dystrophy, etc. Though anyone can be a carrier of Tay-Sachs, it is most common among Ashkenazi Jews. We will hold a screening clinic at Beth Or this fall.

Prepare for the future and make informed health decisions



1 in 2 Jews is at risk for being a carrier for 101 preventable Jewish genetic diseases. Screenings are affordable, accessible, and safe.

Dr. Randi Zeitzer, family physician, provides healthcare that honors the traditions of the Jewish community, while advocating for the screening of Jewish genetic diseases.

Preventing Jewish Genetic Diseases is a program of the Jewish Health Resource Center at Einstein

Einstein.edu/JHRC | 1.800.Einstein

Einstein
HEALTHCARE NETWORK
More than Medicine

Important School Dates

Sunday, September 19
Opening Day of Sunday —
Judaics, Hebrew, AND YOBO!

Monday, October 4
First day of Monday classes

Tuesday, October 5
First day of Tuesday classes

Sunday, October 10
Youth Event

Staying Safe, Staying Together

Aaron Nienshultz, Director of Religious School

Well, 2021 keeps on providing surprises and challenges! Working with our COVID Task Force and the Religious School Committee, I'm still planning an in-person year for the religious school, with a few extra precautions:

Masking: Masks are required for the religious school, for faculty, students, and staff.

Pods: While we will offer our usual special programs such as Hebrew Tech, music, and *T'filah*, each class will stay in its own separate space. God willing, as conditions improve, we'll be able to come together more often.

Snacks and food will be pre-packaged in individual servings, and our plan for now is to take our snack times outside.

Utilizing outdoor spaces: Plans are underway for tenting and using outdoor spacing as much as possible to keep our air — and our perspective — fresh.

I'm also so excited to announce that we're moving to using ShalomLearning's curriculum. Their interactive, values-based curriculum helps children develop a positive Jewish identity — and that fits us just perfectly! The program is based on values we all share, like "Using your inner strength to do what's right" and "Taking responsibility for your actions." Our faculty will be able to use the resources and plans to bring students the most engaging and innovative Jewish educational content, including videos, text studies, blessings, and stories. It should be a great year!

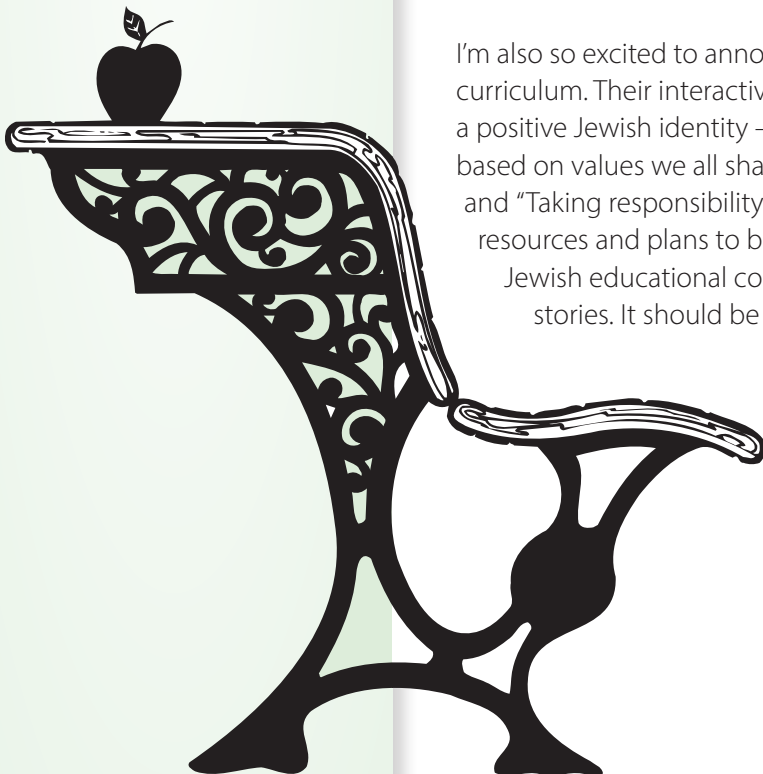


Aaron Nienshultz



**Leonard &
Madlyn Abramson
Education Center**

CONGREGATION BETH OR



School is Back in Session!

Sara Baum, Early Childhood Director

This time of year brings about a lot of changes here at the CECE. The students move up to the next age group, they meet new friends and teachers, and begin new routines at the start of a new school year. These changes can sometime be overwhelming for young children and their parents. Luckily we are here to help provide comfort, advice, or even a hug or two! Below are some things you can do at home to get ready for the start of school.

- **Set a routine at home** — Consistency in the morning can set your child up for success for the whole day.
- **Practice mask use and handwashing** — After the summer and being outside, some of our students may have gotten out of the habit of mask use. Starting to reintroduce your child's mask can make the transition back to school a little easier. Practice proper hand washing. Wash for at least 20 seconds with soap and water. Try singing a song or counting as you wash the germs away.
- **Model the first day during play** — Role playing can help young children get through many situations and hurdles. It is a great way to teach them different expectations.
- **Have open conversations** — Ask your child questions and listen to how they are feeling. Talking about emotions can help your child understand their big feelings.



Sara Baum



**Zipporah S. Abramson
Center for Early
Childhood Education**

CONGREGATION BETH OR

We look forward to welcoming new and returning families. The Beth Or teachers and staff can't wait to see all of our friends!

Mark your calendars with these important dates coming up in the next few months.

September

- 9/3 – CECE Closed, Teacher In-service
- 9/6 – CECE Closed, Labor Day
- 9/7 – CECE Closed, Rosh Hashanah
- 9/8 – CECE Closed, 2nd Day Rosh Hashanah
- 9/9 – First day of School
- 9/15 – 3pm Dismissal, Kol Nidre
- 9/16 – CECE Closed, Yom Kippur
- 9/21 – CECE Closed, Sukkot
- 9/28 – CECE Closed, Simchat Torah

October

- 10/1 – Virtual Munchkin Minyan honoring our 4's
- 10/6 – Back to School Night
- 10/12 – Picture Day
- 10/13 – Picture Day

Welcome to our New Youth Engagement Advisor, Rachel Shapiro!



Jillian Peskin

Jillian Peskin, Director of Member & Youth Engagement

L'Shana Tova to my Beth Or family - I can't wait to see many of you this coming 5782!

I am delighted to introduce you to our newest team member, Rachel Shapiro. Rachel will serve as our new Youth Engagement Advisor. She will be overseeing our K-6 youth programs, as well as having a big hand in YOBO!

Her warm and infectious personality is a delight. She is positive and engaging — wonderful to be around. I am positive you will enjoy getting to know her as much as I have.

Below you can read a note she wrote to introduce herself to all of you.

Jillian

Hello Beth Or Family!

I have recently accepted the position of Youth Engagement Advisor and I am so excited to meet everyone! I am eager to build relationships with members of the Beth Or community!

I grew up in Bucks County and attended religious school in New Hope. I have always enjoyed learning about what it truly means to be Jewish, as well as the part we play in our community. Our rich history has always resonated deeply with me. One of my favorite memories from my Hebrew Schools days was my mitzvah project; raising money for various organizations helped me feel the impact of making a difference not only in the Jewish community, but our local community as well.

I graduated from Bloomsburg University with a B.S. degree in the arts. I look forward to incorporating the use of artistic expression and creativity into the engagement process. My experience working as a camp counselor has given me a strong foundation for bridging the gap between adults and youth.

I look forward to building relationships with not only the students, but parents as well! Please drop by and say hello any time. I would love to get to know you all personally. I also look forward to hearing ideas from all of you and finding ways to incorporate them into our program!

Rachel



The Choirs are Back!



Jaime Murley



Cantor Jaime Murley, Junior Choir Director

Congregation Beth Or is blessed to have not one, but TWO fabulous youth choirs! The Junior Choir is for grades 1-6. Our **Junior Choir** is full of *RUACH* (spirit) when they sing all of the holiday and Shabbat favorites. Our **Chai Note** choir is for grades 7-12. Chai Notes repertoire is a little more complex. The students get to have fun exploring different vocal parts and creating harmonies. Students who play guitar are welcome to help co-lead.

If there's one thing we know in the year 2021, it's to "be flexible!" Last year the choirs at Beth Or did things we never did before! We learned songs on Zoom, spliced videos together to create songs, and used movie making apps to create the Purim Schpiel. We're hoping this year looks a little more "normal", but we're not 100% there yet. The situation will change as the year progresses, but here is how things will start off this year:

Junior Choir will rehearse from 9-9:30am (before Religious School) on the following dates:

| | |
|-----------------------|--------------------|
| September 19 | February 6, 20, 27 |
| October 3, 10, 24, 31 | March 13, 20, 27 |
| November 7, 14 | April 3 |
| December 5, 12 | May 1, 15 |
| January 23, 30 | |

For the time being, Junior Choir rehearsals will be held outdoors, and the children will wear masks. The choir will lead holiday and first Friday Shabbat services as long as it is safe to do so (TBD on a month by month basis).

Chai Notes will rehearse from 5-7pm during YOBO on the following dates:

| | |
|--------------|-------------|
| September 26 | January 9 |
| October 17 | February 13 |
| November 21 | March 6 |
| December 19 | April 24 |

Chai Note rehearsals will be held outside or in the sanctuary.

Both choirs will have social events throughout the year. Social events will be held outside while the weather permits.

I am so excited to see everyone in person and I can't wait to hear the voices of children in person again!! If you have any questions about our choirs, please don't hesitate to reach out any time at jmurley@bethor.org and I'll be happy to give you answers!

L'Shana Tova!



ShulCloud Member Database System FAQs

By now, all congregants should have set up their login credentials to access their accounts and use our new, integrated member database system. We hope you are finding ShulCloud to be user-friendly! Now that you've gotten started, below are pointers to help enhance your user experience going forward. For more FAQs, click the **ShulCloud Member Database FAQs button** located on the bottom of the website membership page: www.bethor.org/discover/membership.

Note: It is highly recommended that you use Chrome as your internet browser when accessing Shulcloud.

Where do I login to my account?

Go to www.bethor.org, click the red "login" button on the upper right corner of the home page. Enter your user name (your email address) and password.

I forgot my password, what do I do?

On the log-in screen, click "forgot password." ShulCloud will send an email prompting you to set up a new password.

Can I update my personal information on ShulCloud?

You are able to edit personal information for yourself and your family at any time when logged in to your account on the website and we encourage you to do so! Click the "My Account" button and navigate the different categories that you can edit including address, phone number, email, birthday, family relationships and more! Please add a headshot photo to your account, too.

Who can see my information?

Visibility is separated into financial and general. The only people who can see your financial information are you and authorized Beth Or administrative staff. The online Member Directory shows your general information and is only accessible when members are logged in to their ShulCloud Account. Each family is able to control what information is visible in the directory. The directory is "view" only and cannot be downloaded or shared.

If you have questions regarding your ShulCloud account, please email info@bethor.org or call the office during business hours, 215-646-5806.

Can I use ShulCloud to make donations?

There are 2 ways to make a donation: Click on the "Give Now" button in the blue bar on the website home page or in the drop-down menu of the Donate Tab or click on the Donate Button in the Financial section of your account page. When you are logged in to ShulCloud, the form will automatically fill your basic information and you can pay for your donation using the credit card or e-check you've added to your account.

Can I use ShulCloud to make payments?

Exciting news - you can pay your statement online! You can pay the full balance, set up monthly payments and indicate which charges you are paying using the credit card or e-Check in your account profile.

What if I do not want to donate or pay online?

You may continue to mail checks to make payments. If you choose to send checks, we ask that you allow up to 2 weeks for payments to appear on your account.

How do I register for events & programs?

Nothing has changed with this process. You can register for events & programs using the RSVP Portal button on the website home page, or click the links on the website calendar listings or your weekly Chai Lights email.

Meet Our B'nai Mitzvah Students

Matthew Appleton

September 18

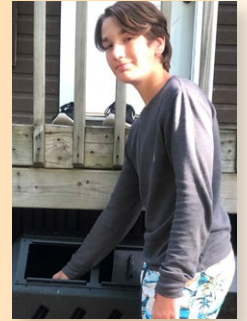
My Mitzvah Project focused on helping animals in the Montgomery County community on April 18. The Elmwood Park Zoo hosted a Free Drive through **Pet Vaccine Clinic** in their satellite parking lot. I volunteered at the clinic and worked with the Post Vaccine Area/ Surveys Team. I greeted the attendees who just had their pets vaccinated and helped them take a brief survey. I asked if they wanted to register their pets. I also distributed information and pet supplies, including pet food to pets and families in need. I got to meet a lot of people that worked in volunteer areas and animal-focused nonprofits in the area. I worked with my Aunt Amanda, who is a veterinary technician.



Charlie Harbour

September 25

I have always been a lover of nature and environmental conservation. I became interested in composting in 2020 because it afforded me the safety of being home, but still making an impactful difference as an individual. I partnered with the **Back to Earth Compost Crew** because they help introduce families like ours and individuals like me to the world of composting and its benefits not only to our local community, but our global community. I have also taken my love of composting to Camp NorthStar in Maine where I teach and learn about the finer points of composting with my counselors and fellow campers!



Saige Baron

September 18

For my Mitzvah Project I am collecting gently-used or new children's books. I will be donating them to **Mitzvah Circle Foundation**. They collect clothes, toiletries, books and toys for families in crisis. I have volunteered many times with my family to pack up boxes of these necessary items for families in need. I want to help them to make sure every child has a book to read!



Drew Shakespeare

September 25

For my Mitzvah Project, I knew I wanted to help animals in some way. Protecting wildlife and their habitats is important to me so I looked for a way to help. **The Wildlife Clinic at the Schuylkill Center** is one of the only wildlife rehabilitation facilities in the area that treats injured, ill, and orphaned wildlife with hopes of releasing them back to the wild. By providing medical care to the animals and education to the community, the Wildlife Clinic helps to reduce the harm that people cause animals and their habitats. Because of what they do, animals and people can live together more peacefully. Each year, the Wildlife Clinic saves thousands of animals and answers hundreds of hotline calls from people who are trying to support injured animals. Donations are necessary to continue this effort. If you would like to help, visit https://www.schuylkillcenter.org/donate/_wishlist.php for a list of needed supplies.



Evan Cohen

September 25

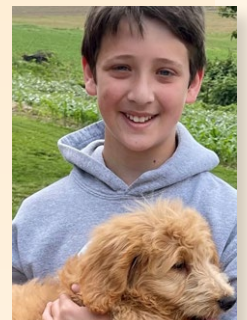
For my Mitzvah Project, I collected and donated new and slightly used baseball and softball equipment to **Pitch In For Baseball and Softball**. Like me, many kids throughout this area love to play baseball, but are unable to do so due to the cost of the equipment. Pitch In For Baseball and Softball provides equipment directly to leagues, schools and organizations around the world. I was able to collect gloves, cleats, hats and a pitching machine. Please visit www.pifbs.org if you are interested in donating or need any further information.



Avery Bohm

October 2

For my Mitzvah Project I am collecting donations for **Home At Last** dog rescue. Home At Last is made up of volunteers whose goal is to save the lives of homeless dogs suffering in high-kill shelters as well as owner-surrender dogs who need to find new homes due to unfortunate circumstances. Home At Last finds foster homes for these dogs until they are adopted. They need supplies like food, leashes, toys and other items to take care of the dogs in foster care. I have always loved dogs so this Mitzvah Project is very important to me. I will collect donations from now until my Bar Mitzvah on



October 2. I have an Amazon wishlist and a chewy.com wishlist. Items can also be sent directly to me at 1031 Kingsdown Ct. Ambler, PA 19002 and I will drop them off at Home At Last.
https://www.chewy.com/g/home-at-last-dog-rescue_b66323136 https://www.chewy.com/g/home-at-last-dog-rescue_b66323136

Emmy Schurr

October 2

For my Mitzvah Project, I will continue working with younger children on language and literacy. My elementary school teachers always paired me up with younger children who I would meet with weekly to work on reading and writing skills. Because I cherished these experiences, those same teachers will pair me up again in the Fall. In addition, I have begun a Book Drive to benefit **Tree House Books**. Their goal is to ensure that every child in Philadelphia has books in their homes. Currently there is only one book for every 300 homes in low income neighborhoods. Please help by donating new or gently-used picture and board books through a drop-off box at Beth Or and/or through direct donations that support a local bookstore: <https://treehousebooks.bigcartel.com/>.



Camryn Horwitz

October 9

For my Mitzvah Project I decided to help a few organizations throughout the year. I collected and delivered clothing and other essential items to **The Mitzvah Circle** to help families in crisis. It is a wonderful organization where I have had the privilege of volunteering over the years. I also play many sports and know how expensive equipment can be for families. That should not hold kids back from playing sports and staying active. I collected new and gently-used sports equipment and donated them to the organization **Leveling the Playing Field**. The organization collects and distributes the equipment to under-resourced youth groups, community programs, and schools.



Brayden Weiss

October 9

For my Mitzvah project, I wrote cheerful letters and cards and sent them to the senior citizens that are part of the **Northeast NORC**. NORC stands for Naturally Occurring Retirement Community and it is in Northeast Philadelphia. Seniors can live in their homes and get help, as needed, from volunteers. Most live alone. Before the pandemic, they were used to having people help them in their homes. Before COVID-19, I volunteered with my family to help



change screens, light bulbs, and smoke detectors, and do light cleaning. Both the senior citizens and I got a lot out of it as it was nice to hear their interesting stories and they enjoyed having someone to talk to. To learn more, please visit: <https://www.jfcsphilly.org/main-home-page/older-adults/norc/>.

Morgan Bloom

October 16

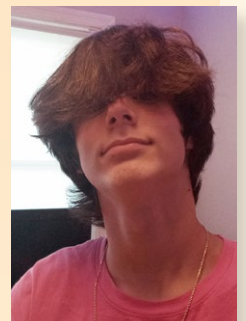
For my Mitzvah Project, I will be making and selling cake-pops in order to raise money to help the **Holocaust Survivors** in need living within The Federation Housing. The one thing all of the survivors said that was most important to them was to share their stories with younger generations. This is especially important to me because my great Bubby and Zeide were Holocaust Survivors. While doing this for my Bat Mitzvah, I also honor them.



Luke Factor

October 30

My Mitzvah Project involves **communicating with the elderly in a nursing home**. My grandma is in a nursing home and is deaf. When we visit her, we get to see her through a glass door and we communicate using American Sign Language (ASL). There are other residents that come to the glass door but aren't able to talk to their loved ones, which makes it even harder going through the pandemic. This makes me sad. So what I have decided to do is to send cards to Saint John Neumann Nursing Home residents. I am writing little messages on the cards. The messages are about how their days are going and how happy I am that they made it through the hardest part of the pandemic. I hope that once this pandemic disappears, I will get to go meet and visit the friends I have made.



Mitzvah
Tor

Measuring the Impact of Beth Or Social Action

If you are a regular reader of this column, you know that we often talk ‘numbers,’ ... number of bags of clothing collected, number of children’s books donated, number of Thanksgiving turkeys delivered, and so on. But to measure impact, we change our focus to the people whose lives are touched because of your involvement in Beth Or Social Action.

The loving kindness that you show through your participation and volunteerism provides hope to someone who needs it. Proper clothing for a job interview instills self-esteem and pride. A bag of groceries eliminates the worry that comes with food insecurity. A duffle bag filled with toiletries can mean the world to a family who has been displaced following a natural disaster.

As a member of the Beth Or community, you make it easy to measure our Social Action impact. By contributing ideas, giving your time, dropping off donations, and attending our programs, you continue to advance the effect we have in healing the world — *Tikkun Olam*.

Thank you for striving — caring — making a difference!

The Social Action Committee Announces 5782 High Holy Days Mini-Collection Day Sunday, September 19 • 9:30 - 11 am

This past July, the Social Action Committee mobilized via zoom to plan our High Holy Days Mini-Collection Day. It was good to connect and share ideas. By the close of the meeting, we identified organizations to support through collections that will directly help lift up people who find themselves in distressful situations. We invite you to join our collective efforts by dropping off any of the needed items in the Spain Lobby during the first day of Religious School.

- **St Christopher Hospital:** Full-Size Toiletries (deodorant, body wash and soap, shampoo, conditioner, toothpaste, toothbrush), Laundry and Dish Soap, Toilet Paper, Trash Bags.
- **Our Closet:** Gently Used Clothing, Footwear and Accessories (men, women’s, children’s)
- **Add B. Anderson School in West Philadelphia:** School Supplies (K-8)
- **Bethlehem Baptist Food Pantry:** Non-Perishable Food (drop-offs can be made beginning September 1 in the Main Entrance Foyer)

Coming Soon!

MITZVAH MONTHS (November-December) and MITZVAS DAY (December 25)

The Social Action Committee welcomes you to join us as we organize these early Winter activities.

Please contact Social Action Committee Co-Chairs:

Susy Krimker, susykrimker@gmail.com

Margie Chachkin, chachkin@aol.com



Evan Segal

GET CONNECTED

Business & Career Network

GET CONNECTED is Congregation Beth Or's Business and Career Networking Group. We meet the 2nd Monday of every month either in-person or via Zoom.

Our next meeting will be **Monday, October 11 at 7 pm.**

We currently have 25-30 professionals who attend GET CONNECTED meetings regularly. Their professions include the following:

- Estate and Tax Attorney
- Residential Mortgage Broker
- Commercial Lender
- Residential Realtor
- Commercial Realtor
- Certified Financial Planner
- Author and Writer
- Children's Tutor
- IT Specialist
- Employment "Headhunter"
- Mergers and Acquisitions Intermediary
- Cemetery Planner
- Geologist
- Employee Benefits Consultant
- Sales Coach and Trainer
- Party Planner/Decorator
- Automotive Tire Sales

We are looking for professionals from ALL types of work, however the following should find immediate opportunities for relevant networking and referrals:

- Real Estate Attorney
- General Business Attorney
- Employment Attorney
- CPA
- Bookkeeper
- Architect
- Interior Design
- Home Staging
- General Contractors for Real Estate construction and rehab
- Social Media expert
- Website Design expert

If you are in one of these professions and/or would like more information about GET CONNECTED please contact Evan Segal at **evan@segalfinancial.com** or call **215-704-2080**. We'd love to have you at our next meeting!



Beth Or Brotherhood

The Hand We're Dealt

Doug Burtnick, Brotherhood President



Doug Burtnick



Brotherhood
CONGREGATION BETH OR
Fellowship • Community
Service • Support

Summer's over, and we've begun OUR new year. The happy coincidence of Rosh Hashana and Labor Day in Gregorian 2021 marks what I see as a well-marked transition from relaxation to what I call Serious Season. It's my favorite season with cooler days, kids in school, people back from their summer adventures and the beauty of the colors. You know, the time of year when people get things done. You probably disagree with me about the favorite season thing, but please read on and don't hold it against me.

I see this as the period when people really dig in to start planning what happens next, personally, professionally, even spiritually. What do we do this year, and how to do we make it better than last? Wait! How can anyone answer that question with certainty? What will the weather be, what will Covid bring, how will my health stand up? How can I possibly decide?

Times like this make me think of Annie Duke. She's not an old time Jewish mystic or rabbi, she wasn't even raised in Jewish tradition, but her books about decision-making are applicable to all of us. They focus on making quick decisions when you don't have all the facts. Those types of decisions helped sustain Jews for millennia. I like to say that Jews are great at worrying but even better at adapting to the hand they are dealt.

Annie Duke profoundly understands that concept. She is a professional poker player.

With Annie, like most people, occupation doesn't define the person. Her initial street cred came from academia when she studied language and cognitive psychology at

Columbia and Penn. Only later did she embark on poker and then business consulting as careers. Her books are fascinating, if a little bit like pop-science. I wouldn't be surprised if some of you know Annie as she has Philly connection, nor should you be surprised that my guess that autumn isn't your favorite season was based on the knowledge that fewer than ¼ of Americans say they like autumn the best. Both my guesses came with some rational forethought.

Which brings me to Brotherhood. We've had a great and busy summer, meeting outdoors in person, plowing forward with plans for our autumn activities and events. As I write this, people have been asking me, "How do you know that event we're discussing will take place that way?" I'm not a fortune teller and don't see the future, so in cases like that I refer back to Annie Duke. We're making educated guesses based on what we know and where we think the cards are, just like you'd do in poker. We add a dash of optimism and some logical backup plans, and lo and behold we've got a calendar. Not aiming to promise things we can't guarantee, we can offer our expectations and acknowledge that we'll be flexible if the facts change around us.

The 10th annual Brotherhood Car Show will take place on October 17 weather permitting. Stop by, see 100 or more great cars and vote for the best.

Watch the calendar for our new pop-up activities. We're planning hikes, runs, and even golf for anyone who's interested. We'll send out notes as the dates approach. Lastly, don't forget to buy your Annual Dinner tickets. Bring your friends and come join us for cocktails, dinner and fantastic entertainment from our headliner, Sarge, the comedian.

In fact, come join us for all our events. We're here for the men of Beth Or.

Beth Or Sisterhood

God's Hidden Gift of Self-care

Melisa Lubinski, Sisterhood President

It is highly likely that as you read this article you are preparing for the High Holy Days, a time when our kitchens fill themselves with sweet and inviting aromas indicating that a holiday is around the corner and family will be visiting soon. This fills our hearts with anticipation and warmth while our minds and souls face a challenge. This is a time of year to reflect on our past actions, reaffirm our faith, and revise a plan for our future self. It is not a time to weigh ourselves down with great regret for mistakes and missed opportunities. I believe it is never too late to make changes. It is a beautiful time intertwined with a serious theme as we carry on traditions and rituals that connect us to a community greater than ourselves and celebrate the covenant between God and the Jewish people.

Every challenge one faces holds gifts in disguise even the daunting task of evaluating ourselves and our relationships. I believe God sets the stage through this time during the High Holy Days to encourage our own selfcare and introspection. Golda Meir encouraged, "Create the kind of self that you will be happy to live with all your life. ...fanning the tiny, inner sparks of possibility into flames of achievement". Make the choice to do something because it speaks to your heart as well as your mind. When we care for ourselves, then we can care for others properly, which leads to acts of social responsibility that can help to repair our local communities. I wholeheartedly believe that God trusts all of us to be mindful, grateful and kind as gifts he has blessed us with to better ourselves. Beth Or Sisterhood is a place to discover, make use of, and share your own inward gifts with our congregational community.

L'Shanah Tovah!



Melisa Lubinski



Sisterhood

CONGREGATION BETH OR

Fellowship • Community
Service • Support

Please Support the

Tarshis Gift Shop

Proceeds Benefit Beth Or Sisterhood Programs

Hours:

For a personal appointment, contact Bobbi Adair, Bobbifadair@gmail.com.

Fall Hours: Sunday, 9:30 am – 12:40 pm • Tuesday 4:30 pm – 6:30 pm • Friday 9 am – 12 pm

Discounts available for Sisterhood Members and Beth Or Staff | Great Monthly Sales and New Arrivals

KOSHER WINE SALES

Now you can purchase kosher wine all year long and benefit Beth Or! Use the Beth Or affiliate link on [kosherwine.com](http://bit.ly/BethOrBrotherhood): <http://bit.ly/BethOrBrotherhood> or click the KosherWine symbol on the bottom right side of the Beth Or website home page, "Connect With Us" section.

5% of all sales given back to Brotherhood to benefit Beth Or programming!

Questions? Contact info@bethorbrotherhood.org.



Beth Or Events

All in-person events in September other than worship, religious school and the CECE are planned to be outdoors. The setting for October events has not been determined yet. Please check your weekly Chai Lights email or the event calendar listing for the most up-to-date information and RSVP/Registration links while we remain flexible and adapt to changing health/safety guidance related to the COVID-19 pandemic. Thank you for your patience as we navigate returning to in-person activities this fall.

ADULT PROGRAMS

APEX Book Discussion with Aaron Nienshultz (virtual)

Wednesday, October 27 • 7 pm

Aaron Nienshultz leads a book review and discussion of "A Paris Library" by Janet Skeslien Charles. The book is available at your local library or can be purchased on Amazon. This APEX program will take place on Zoom. All congregants are welcome to attend.

APEX will return to our regular Brunch & Learn programs on select Sunday mornings soon.

ART GALLERY

Opening Reception with Artist Lee Muslin Friday, October 8 • Following Shabbat Services Exhibit runs through November 2021

The Olitsky Art Gallery is thrilled to present its first 2021 exhibit with the evocative abstract work of Lee Muslin. Of her work, Lee says "Guided by intuition, I create art that is about expression and movement. I am drawn to the freedom of abstraction and the inherent challenges in painting that are not based on reality, but in the imagination. Listening to music while I work, the rhythms and sounds mix with the paint. This free flowing improvisation captures the unconscious to bring an emotional response." Lee is always concerned with color, shape, balance and composition. Her work has been exhibited in numerous galleries, has been featured in a number of publications, and has won many awards.



BROTHERHOOD/SISTERHOOD EVENTS

Sisterhood Welcome Back Event: Create a Hamsa Hand Painting on Canvas

Sunday, September 19 • 1 pm - 3 pm

Join your friends and make new ones while relaxing, socializing, having fun and being creative. Beth Or congregant and art teacher, Allison Levin will guide participants step-by-step to create their own masterpieces. No art experience necessary! Cost: \$13 for supplies only payable by check to Sisterhood or Paypal. RSVP to Ellen Mirbach, semirbach@gmail.com by 9/10.

Sisterhood Mah Jongg & Rummikub Game Day Sunday, September 26 • 1 pm - 3 pm

Spend an afternoon playing games and building friendships! All experience levels are welcome to attend this free event. Sets, snacks and refreshments will be provided. Enter to win Mah Jongg themed raffle prizes (tickets: \$2/1, \$4/3, \$10/7, cash only). RSVP to Ellen Mirbach, semirbach@gmail.com by 9/23 and indicate if you are a player or student, prefer Rummikub, need a card, and if you would like to reserve a table for your complete group of 4 (let us know who is in your group).



Brotherhood/Sisterhood Brunch

Sunday, October 3 • 9:30 am – 11:30 am

Mark your calendar. Details to come!

Chanukah Bazaar sponsored by Sisterhood **Sunday, October 10 • 10 am – 2pm**

Chanukah is early this year. It's time to start checking off your gift list! Come to the Beth Or Parking lot for our outdoor Beth Chanukah Bazaar, sponsored by Sisterhood. Shop and help support a variety of local vendors and artisans including children's books, stained glass & Judaica, Lularoe, clothes & accessories, jewelry, sports memorabilia, specialty food and much more! For vendor information, contact Sherry Spector, sspector1949@gmail.com.



Brotherhood 10th Annual Classic Car Show **Sunday, October 17 • 9 am - 1 pm**

Come to the Beth Or parking lot (enter from Butler Pike) to see Classics, GTOs, Sports Cars, Muscle Cars & More! Enjoy a 50/50 raffle & family fun for all. Free car registration and trophies. Bring non-perishable food items to benefit Manna on Main Street. To register your car, contact Bob Cohen at rcohenesquire@aol.com or Allan Posner at allan.posner1@gmail.com.



SAVE THE DATE!

Brotherhood Annual Dinner & Fundraiser **Tuesday, December 7 • 5:30 pm – 9 pm**

Spend the night with comedian SARGE while raising money for to support Beth Or programming! Join Brotherhood for great food, fun, laughs, auction and the chance to win a minimum \$2,500 in a 50/50 raffle. All ladies and gents are welcome! Cost: Mensch members - Free! Brotherhood Members - \$65. Non-members & Guests - \$75.

A portion of the proceeds benefits Manna on Main Street and the Mattie Dixon Community Cupboard. Use the RSVP Portal on the website homepage to purchase tickets.

GET CONNECTED: BETH OR BUSINESS & CAREER NETWORK

Fall Kick-Off Networking Event

Monday, October 11, 7 pm – 8 pm

Check your weekly Chai Light email for details.

SPECIAL EVENTS

Mini-Mitzvah Collection Drive

Sunday, September 19 • 9:30 am – 11 pm

The Social Action committee has put together an opportunity for the Beth Or community to help others who are living in distress. Stop by during the first day of Religious School and drop off any of these items in the designated area:

- **St Christopher Hospital:** Full-Size Toiletries (deodorant, body wash and soap, shampoo, conditioner, toothpaste, toothbrush), Laundry and Dish Soap, Toilet Paper, Trash Bags.
- **Our Closet:** Gently Used Clothing, Footwear and Accessories (men, women's, children's)
- **Add B. Anderson School:** School Supplies (K-8)
- **Bethlehem Baptist Food Pantry:** Non-Perishable Canned and Boxed Food (drop-offs can be made beginning September 1 in the Main Entrance Foyer)



BETH OR CARES

Genetic Disease Screening

Sunday, September 26, 9:30 am – 11 am

Details to come.

Heart Health Awareness

Monday, October 25, 7 pm

Details to come.

Red Cross Blood Drive

Sunday, October 31 • 9 am – 2 pm

The Red Cross is in urgent need of all blood types. Beth Or consistently hosts one of the largest blood drives in the area. For the health and safety of all, the Red Cross follows the same COVID-19 guidelines that are used by hospitals. Register via the link on the website calendar or contact Stu Briefer at smbriefer@gmail.com or 215-661-9990. The blood drive is sponsored by Brotherhood.

HOLIDAYS AND SHABBAT EVENTS

High Holy Days 5782

Best wishes for a sweet and healthy new year!

Visit our High Holy Days Headquarters:

www.bethor.org/HHD2021 for:

- Complete Service Schedule and Viewing Links
- Sermon Discussions and Zoom Registration Links
- Learning Sessions and Zoom Registration Links
- Digital versions of all prayer books, DIY Tashlich, Book of Remembrance
- FAQs
- And more!

All High Holy Days services can be watched on our Livestream site, <https://bethor.livecontrol.tv/>

Bookmark the link as a favorite on your computer for easy access!



Heart & Soul Shabbat

Saturday, October 23 • 11 am

Join Rabbi Bonder and Paul Brooks for an outdoor spiritual experience that is good for your mind and body. Details about the location and time to come.

FALL FESTIVALS

Sukkot & Simchat Torah

Fall Festival Programs will take place in person and outdoors when feasible.

Welcome to our Tent Erev Sukkot Service & Oneg-To-Go

Monday, September 20 • 6:30 pm

Come to our beautiful outdoor Goldstein Sukkah on the Lakeside Terrace for a spirited, song-filled service and shake the lulav & etrog. Grab a tasty treat to take home with you. If weather doesn't cooperate, we will move indoors.

Sukkot Worship

Tuesday, September 21 • 9 am

Sukkot worship takes place in the Sanctuary. In-person attendance is limited. RSVP to Barbara Murtha, bmurtha@bethor.org.

Lunch & Learn in the Sukkah with Cantor Green

Wednesday, September 22 • 12 pm - 2 pm

BYO lunch to the outdoor Sukkah on the Lakeside Terrace. Beverages will be provided. RSVP by 9/20 to Barbara Murtha, bmurtha@bethor.org, 215-646-5806 ext. 220.

Sushi, Sake, Sukkah (and Soccer)!

Friday, September 24 • 5:30 pm

Plans are in place to safely hold one of our most favorite festival events, following proper COVID-19 guidelines. There are activities for Kids (3 years - 6th grade) and teens (7th grade & up), too! Details & RSVP in your weekly Chai Lights email. Questions? Contact Allison Levin, allisonlaurenlevin@gmail.com or Alyson Gass, alysongass@gmail.com.

Erev Simchat Torah Worship & Consecration followed by Israeli Dancing

Monday, September 27 • 6:30 pm

Join us for this annual tradition – with a new twist as we work around health & safety guidelines! Look for details to come in your weekly email. Following the service, meet your friends outside under the canopy on the Lakeside Terrace where RAK DAN is back to spin tunes for an Israeli Dance Party!

Simchat Torah Worship & Yizkor

Tuesday, September 28 • 9 am

Simchat Torah and Yizkor take place in the Sanctuary. In-person attendance is limited. RSVP to Barbara Murtha, bmurtha@bethor.org.



Our Fall 2021 Lifelong Learning schedule is kicking off in September and October. At this time, we plan to hold all classes in-person at Beth Or. We appreciate your flexibility if we need to switch any class to Zoom. For a complete schedule of upcoming Fall and Winter classes, please refer to the web calendar or the Fall 2021 Lifelong Learning brochure that will be mailed to your home by late September.

RSVP for each class using the link in the RSVP portal, web calendar event or your weekly Chai Lights email. You may also contact Barbara Murtha, bmurtha@bethor.org, 215-646-5806 ext. 220.

SEPTEMBER/OCTOBER CLASSES

On One Foot: Re-Introduction to Judaism with Rabbi Bonder

Sunday mornings starting September 19 • 11am – 12pm

Now in its third year, this class offers the chance to re-engage with Jewish tradition. Drop off your kids at Religious School, grab a coffee and a nosh, and come join us as we build a community of learners together.

Torah Study with Rabbi Marx and Rabbi Bonder

Saturday mornings starting October 2 • 9:30am – 10:30am

Join your long-standing friends and make new ones every Shabbat morning over traditional texts. Together we share our lives' journeys and discover the depth of our tradition. Midrash is the incredible tool that Jewish scholars throughout the ages have used to draw out hidden meaning from the text. This year, in Torah study, we will study Midrashim related to the weekly Torah portion so that we can introduce ourselves to this ancient source of creativity. Through our study of Midrash we will also come to know the Torah more deeply and fully.

Fixing the Broken Halleluyah with Rabbi Marx

Tuesday, October 5 • 7pm

An intimate encounter with the poetry of Leonard Cohen, through Christian, Jewish and Mystical imagery. What clues does the songwriter offer us on how to repair our broken hearts and wounded spirits?

Intergenerational Exchange with Rabbi Marx

Sundays, October 10 & 17 • 5pm

Learn from each other. Our youth have much to say that our elders need to hear, and at the same time, our youth have lessons that need to be heeded from their elders. Our stories need to be shared so the lessons are not lost. "*L'dor v'dor*" — from generation to generation - is a key value of our community. Join Rabbi Marx for an open dialogue between the grandchildren and their grandparents in an intergenerational exchange. Open only to our children and their grandparents.

Working on Ourselves with Rabbi Marx

Tuesday, October 12 • 7pm

How the prayers in our liturgy help us with the crucial art of self-reflection and self-repair.

The Torah of Testosterone with Rabbi Marx

Tuesday, October 19 • 7pm

The world is filled with so many confusing messages about what it means to be a man. Sometimes it seems as if machismo has become a code word for toxicity and violence. What does Judaism have to say about manhood? How can our tradition heal and reaffirm men's lives and experiences?

Comic Books and Jewish Roots with Rabbi Bonder

Tuesday, October 26 • 7pm

Were the Hebrew Bible and Rabbinic literature inspiration for Stan Lee's famous comics? In his book, *Stan Lee: A Life in Comics*, author Liel Leibovitz argues that they were. Comic books help us dive into complex issues and inspire many. Come see how they might also help us explore Jewish tradition.





Celebrating Your Simcha

Our beautiful building provides the perfect place to celebrate your family's simchas.

Our catering partners on the Approved Caterer List — shown below and published on our website (www.bethor.org) stand ready to provide delicious food for your event. They can provide menu options at a range of prices designed to meet your specific needs and budget.

We hope that you will consider having your celebrations at Beth Or. To learn more about hosting an event at Beth Or, please contact Amy Abrams at 215-646-5806.

Approved Caterer List — 2021/22

| | |
|--|--------------|
| Annemarie's Cuisine • Annemarie Silva | 215-806-7675 |
| Betty the Caterer (Kosher) • Jeff Kalinsky | 215-224-8400 |
| Ben & Irv's Deli • Lennie or Michael | 215-355-2000 |
| Classical Caterers • Evan Bernstein | 732-297-6444 |
| Go2eventplanner (new Phila. based) • Arlene Rotfeld | 516-909-8580 |
| Infinity by Design • Fred Morganstein | 610-405-9787 |
| Panache Catering by Foodarama (Kosher) • Gary Rosenwald | 215-633-7100 |
| Pumpernick's Deli • Jeff Klein | 215-393-5800 |

Classical Caterers



Fine Kosher and Glatt Kosher Catering

Our Service Will Delight... Your Every Expectation.

732.297.6444 • www.classicalcaterers.com

Annemarie's Cuisine

Be A Guest At Your Own Event

CHEFS • SERVERS • BARTENDERS

Baby Naming, Bris, Kiddush Lunch, Birthdays,
Bar & Bat Mitzvah, Weddings, Showers,
Graduations, Funerals, Shiva Dinners

215-806-7675

www.annemariescuisine.com

Email: catering@annemariescuisine.com

Looking forward to making your next event a success!



Go2eventplanner

Go2eventplanner.com

Specializing in At-Home/Temple Catering
and event coordination, with Custom Menus, and
Artistic Presentation

**Engagements, Showers, Garden Weddings,
Mitzvahs, Tent Parties**

Let's do Something Wonderful Together!

Arlene Rotfeld, CIA Food Stylist

Cuisine | Staff | Chefs | Rentals | Design

go2eventplanner@gmail.com

516-909-8580



Corporate & Social Catering

Ben & Irv
Restaurant & Delicatessen

1962 County Line Road
Huntingdon Valley, PA 19006

PH (215) 355-2000
FAX (215) 364-6638

Extended kiddushes, mitzvahs, baby namings & more



Infinity
CATERERS

(215) 509-7280

infinitycaterers.com

4401 Cresson Street • Philadelphia PA 19127

Panache Caterers

BY FOODARAMA

CATERING FOR ALL OCCASIONS—IN YOUR HOME, OFFICE, OR
TEMPLE—FOR OVER 50 YEARS—CERTIFIED KOSHER



CALL FOR YOUR FREE MENU AND PARTY PLANNING GUIDE
215-633-7100 888-309-3800

WWW.FOODARAMA.COM

DELICATESSEN
PUMPERNICK'S
RESTAURANT

Pumpernick's catering department guarantees to
impress your guests. Smoked Fish, Deli, Sandwich, Wrap
Trays and more. Bar/Bat Mitzvah's graduations, Birth-
days, Sporting Events, Shiva Dinners and more.

215-393-5800 • pumpernicksdeli.com

Chai-Lights — September/October 2019

New Members

Neil, Jaclyn, Ethan (14), Noah (11) & Tovah (8) Ackerman
Jeff, Sara, Hannah (19) & Noah (16) Erlbaum
Moreen, Chary, Ariel (3) & Tamar (1) Afergan
Lou, Rhona, Jordan (23) & Jamie (21) Fromm
Steven & Roberta Bergman
Nathan, Sydney & Jacob (<1) Buchbinder
Richard & Connie Berman
Candy Weiss
Rachel, Jason & Dara (8) Land
Arielle Schaeffer Weiss & Andrew Weiss
Sean, Sarah & Jaime (<1) Caverly
Jason, Meredith, Alexis (15), Olivia (11), Hayley (9) & Jonah (6) Zaroff
Steve & Linda Pollack
Josh, Aurora, Jack (16) & Lila (3) Satler
Craig, Milo (8) & Joss (5) Deiley & Amy Winheld
Dara, Steven, Madeline (10) & Jacob (8) Tuteur
Robert Britchkow
Julie Hurvitz Aliaga & Marcus, Sofia (5), Jonah (2) & Ethan (2) Aliaga

Rejoining Members

Robert & Carol Steinberg
Judith Bergman
Vicki Miller
Joel & Tonja Magerman
Lois, Eliana, Simon (8) & Iris (6) Greenfield

May Their Memory Be A Blessing

Beverly Itzkowitz, mother of Ted Itzkowitz
Audrey Lazar, mother of Wendy Gartside
Susan Posner, cousin of Cindi Pasceri
Ellen Georgia Goldbrenner, cousin of Holly Wright
Stephen Wiener, father of Lori Orenstein
Clifford "Cliff" Reback – uncle of Andi Becker-Arnold
Sari Portman, mother of Carol Udis
Myra Kelson, sister of Marlene Robinson
Ethel Rabinowitz, mother of Marc Rabinowitz
Michael D. Kaplan, brother of Fred Kaplan
Florence Arnold, congregant & mother of Robin Arnold
Norma Ziegler, aunt of Liz Hirsch
Dorothy Eileen Burnham, mother of Georgia Cottrell
Carl Samuels, brother of Marlene Cohen

Mazel Tov

Birth of Sadie Grace Weinstein, granddaughter of Bob & Lana Weinstein
Birth of Elliot Ryan Steinberg, grandson of Rob & Carol Steinberg
Birth of Benjamin Asher Sirulnik, grandson of Rob & Carol Steinberg
Birth of Evren Cooper Pamukcu Leslie, grandson of Lisa Brown & Rif Pamukcu
Birth of Isabella Maura Shemtob, granddaughter of Al & Lori Shemtob
Birth of Cara Jo Backus, granddaughter of Anthony & Bobbi Klondar
Baby Naming of Evelyn Rose Pastor, granddaughter of Jack & Linda Jankovitz
Baby Naming of Noa Madeline Sifert, granddaughter of Marc & Alison Feldman
Engagement of Robyn Freedman, daughter of Gary & Abby Freedman, to Lukas Weingartner

Engagement of Phil Steinberg, son of Rob & Carol Steinberg, to Caroline Kay
Engagement of Jamie Bilofsky, daughter of Ira & Carolyn Bilofsky, to Patrick Hill
Marriage of Julie Zauzmer, daughter of Bob & Jan Zauzmer, to Gabriel Weil
Bat Mitzvah of Alexa Cohen
Bat Mitzvah of Saige Baron
Bat Mitzvah of Matthew Appleton
Bat Mitzvah of Evan Cohen
Bar Mitzvah of Drew Shakespeare
Bar Mitzvah of Charlie Harbour
Bar Mitzvah of Avery Bohm
Bat Mitzvah of Emmy Schurr
Bat Mitzvah of Camryn Horwitz
Bar Mitzvah of Brayden Weiss
Bat Mitzvah of Morgan Bloom
Bar Mitzvah of Josh Gladstone
Bar Mitzvah of Luke Factor

Oneg and Flower Donations

September Flower Donations

September 17 • Jonathan and Amanda Cohen in honor of Alexa Cohen's Bat Mitzvah
David and Aimee Appleton in honor of Matthew Appleton's Bar Mitzvah
Josh and Lauren Baron in honor of Saige Baron's Bat Mitzvah
September 24 • Mitchell and Tracey Cohen in honor of Evan Cohen's Bar Mitzvah
Tyler and Maggie Harbour in honor of Charlie Harbour's Bar Mitzvah
Eric and Nicole Shakespeare in honor of Drew Shakespeare's Bar Mitzvah

October Flower Donations

October 1 • David and Stefani Bohm in honor of Avery Bohm's Bar Mitzvah
Todd and Shawn Schurr in honor of Emmy Schurr's Bat Mitzvah
October 8 • Seth and Dayna Horwitz in honor of Camryn Horwitz's Bat Mitzvah
Steven and Hallie Weiss in honor of Brayden Weiss' Bar Mitzvah
October 15 • Warren and Pam Bloom in honor of Morgan Bloom's Bat Mitzvah
Adam and Marne Gladstone in honor of Joshua Gladstone's Bar Mitzvah
October 29 • Glenn Factor and Trista Factor in honor of Luke Factor's Bar Mitzvah



Memorials and Contributions

Rabbi Marx's Discretionary Fund

In Memory of

BYRON KRULEWITCH
Aaron & Lois Lambersky
Andrea Becker-Arnold &
Joseph Arnold
Doreen Berest
Ellen Werther
Eric & Faye Benshetler
Hal & Pearl Tragash
Howard, Andrea, Ilan &
Dylan Goldstein
Jane & Zane Kurtz
Karen Silverberg
Lee Lambersky
Lenore Kipper
Lila & Harry Schultz
Michelle & Michael Boas
Neen Davis
Ted Itzkowitz & Barbara
Cohen Itzkowitz
The Pascal Family
DONALD GRAY
Angelo & Heidi Devita
Pat & Scott Latimer
BARRY CHASEN
Carole Chasen
DAVID MARGULIES
Debbie & Brad Pliner
LEON GELMAN & MADELENE
LOEWENSTERN
MARGARET (PEGGY) GELMAN
Gary & Cindy Loewenstern
JOSEPH GOLDBLUM & JOYCE
KILSHAW
Graham & Rebecca Kilshaw
GERSON ROSENTHAL
Ronald & Barbara Rosenthal
TAMERON BARISH
Sandy & Larry Frankel

In Honor of

NORMAN GOLDBERG's
Special Birthday
Jean & Eli Aghen
Co-officiants RABBI MARX &
MYER BERNSTEIN
Marsha & Steve Milakofsky

In Appreciation of

RABBI MARX
Albert & Phyllis Turek
Norman & Betsy Berlin
Ted & Barbara Cohen
Itzkowitz

Rabbi Bonder's Discretionary Fund

In Memory of

MURRAY GROSSMAN
Larry & Joanne Grossman
MARVIN THAL
Sonny Thal

In Honor of

Blessing of granddaughter's
Pilgrimage to Israel
Carole Chasen

In Appreciation of

RABBI BONDER
Anthony & Heidi Devita
Neil & Jaclyn Ackerman
Rochelle Goldberg
Ted Itzkowitz & Barbara
Cohen Itzkowitz
Vince & Cyndi Paseri
Carole Chasen
Bob & Wendy Gartside
David Goldstein & Bonnie
Libby

Cantor Green's Discretionary Fund

In Memory of

BEVERLY ITZKOWITZ
Stephen & Elaine Kelbick

In Honor of

Birth of EVREN PAMUKCU
LESLIE
Stephen & Elaine Kelbick

In Appreciation of

CANTOR GREEN
Heidi, Angelo & the Gray/
Devita Family

Barbara Goldberg Nursery School Fund

In Memory of

ELLEN GEORGIA
GOLDBRENNER
Holly Wright & Family
SUSAN GRECO
ALBERT TUREK
Nancy & Joel Scudder
SHIRLEY BROAD
Nikki, Mike, Joey & Cooper
Cohen
BYRON KRULEWITCH
The Diamond Family

In Honor of

Marriage of BENJAMIN
MILAKOFSKY & ALICIA
BARRETT
CECE Sunshine Fund
Ellen Werther
Sharon & Jim Carlin

Birth of KAIDEN ZAYN STONE
Ellen Werther
HEATHER HILL's 1st Birthday
Mark & Sally Hurwitz

In Appreciation of

RABBI BONDER
Lonnie & Monica Brantz

Barbara & Marvin Goldberg Confirmation Israel Trip Endowment

In Memory of

BYRON KRULEWITCH
Susan Edelstein

The Beth Or Ner Tamid Endowment Campaign

In Memory of

HOWARD BERNARD
LIGHTSTONE
Robin Staats

Capital Fund

In Memory of

ESTHER SOLOMON
Mark Solomon

Caring Congregants Fund

In Memory of

DONALD GRAY
Andrea Becker-Arnold &
Joseph Arnold
FERNE GOLD
LARRY DROSSNER
Faye & Eric Benshetler
SARI PORTMAN
Heidi & Angelo Devita
ROBERT LENENFELD
Joan & Alan Kober
Judy & Jon Beck
MARVIN DESSNER
Sue Dessner
CLIFF REBACK
The Landau Family

In Honor of

Birth of ROBERT & LANA
WEINSTEIN's grandchildren
Engagement of SARAH
MCKINNEY to AJ
SIMANGLATT
Ellen Werther

In Appreciation of

JUDY BERNSTEIN
Caring Congregants
BARBARA COHEN
ITZKOWITZ

Deborah Gene & Daniel H. Eisman Outstanding Student Award Fund

In Memory of

DEBORAH GENE EISMAN &
DANIEL H. EISMAN
ETHEL RABINOWITZ
Michael Eisman & Sherry
Kohn-Eisman

General Fund

In Memory of

LOTTIE JOHL
Beth & Bernie Johl
SUSAN POSNER
BEVERLY ITZKOWITZ
Bob Simon
AUDREY LAZAR
Frances Salkovitz
ELSIE FELDMAN
HOWARD B. MYERS
BYRON KRULEWITCH
Joann Simon
BOB LENENFELD
Herb & Renee Cohen
BYRON KRULEWITCH
Sussie & Al Harris

In Honor of

JOEL COHEN's 90th Birthday
Janet First

The Hannah Miller Book & Education Fund

In Honor of

ROBIN SECOULER's Birthday
Lorraine Secouler

Israel Emergency Fund

In Memory of

BYRON KRULEWITCH
Ellen & Rodger Wichterman
Robert & Susan Silverstein
DIANE STRAHL
ETHEL RABINOWITZ
Robert & Susan Silverstein

Kate Svitek Memorial Garden Fund

In Memory of

HERBERT SKLENAR
Andrea & Bob Sklenar
ELLIE SKLENAR
Andrea Sklenar
LAUREN BERLANT
Cary & Nancy Flitter
BYRON KRULEWITCH
HOPE CLAIR
Frank & Ellen Svitek

In Appreciation of

RANDE KAMINSKY
Gregory Marx

Memorials and Contributions

Linda Gerson Memorial Fund For Grounds' Beautification

In Memory of

MARTIN WEINTRAUB
STEFANIE ROTHSCHILD
The Phil Gerson Family

Mazel Tov

Birth of JANIS & BOB
WILKOFF's grandson
Philip Gerson

M & M Family & Youth Programming Initiative Fund

In Honor of

50th Anniversary of ARTHUR
& BARBARA POMERANTZ
Jay & Judy Marku
Joyce & Mark Schulz
Judith & Selwyn Torrance
Sandra Goldberg
Gorman Investment Group

Meals That Matter Fund

In Memory of

AARON SCHENITZ SMITH
Joan Nerenberg
FLORENCE LEBRAM
Martha & Stephen Lebram

Mazel Tov to

CARLY PAUL on her new
business
Dana Marion & Ilene
Schneller

Music Fund

In Memory of

BESS SNYDERMAN
Paul & Dale Snyderman

In Honor of

Birth of PAUL & DALE
SNYDERMAN's
granddaughter
Engagement of SCOTT
EDELMAN & KRISTEN GRILL
Ellen Werther

Speedy Recovery to

DANA MARION
Ilene Schneller

Reuben R. Wolfert Memorial Fund For Scholastic Excellence

In Memory of

BYRON KRULEWITCH
GERALD WENOVSKY
Marian Wolfert

Mazel Tov to

GAIL KARAFIN
Marian Wolfert

Yahrzeit Fund

In Memory of

ABE SNYDERMAN
Paul & Dale Snyderman
MORRIS RUCHE
Barbara & William
Shoulberg
JEAN BARON
Carol Halbert
LOUIS GREENBERG
Edythe & Samuel Newman
JACOB COHEN
Evelyn Wolf
DOROTHY WEISER
Herbert Cohen
DEBORAH BARSH
Horace Barsh
DORA MARGOLIS
Ina Goodman
BERNICE SPECTOR
Jack & Linda Rosenfeld

LUBA SHTASEL
ALBERT SHTASEL &
HYMAN SOLL
Jean Soll
SAMUEL M. ROSENFELD
Jerome & Janice Dunn
AUDREY KATZ
MORRIS KATZ
Lori & John Happ
WINNIE SHARP
Lila & Harry Schultz
BYRON KRULEWITCH
Linda & Jack Rosenfeld
RITA BERNSTEIN
Myer Bernstein
DAVE DAVIS
Neen Davis
ESTELLE LOKIETZ &
NAT SALZBERG
Rita Lokietz
DONALD GRAY
Shawn & Beth Miller
EMILY GARBOSE
William & Lynne Garbose



Simchas Made Special at Beth Or!

Planning a celebration? Let us host your party and help make memories that will last a lifetime!

From an intimate Shabbat dinner to a large formal party, our beautiful facility is the perfect place to host the event of your dreams, completely customized to your needs.

Learn more about our banquet facilities.

Please call 215-646-5806 or contact Jillian Peskin at jpeskin@bethor.org.



Congregation Beth Or | 239 Welsh Road, Maple Glen, PA 19002 | www.bethor.org



PLAN AHEAD FOR *peace of mind.*

MANY OF US DON'T REALIZE HOW IMPORTANT remembrance is to those who love us. That's why we recommend that you consider cemetery options now, before the time of need. From burial and cremation options to mausoleums and custom estates, your Dignity Memorial® professionals are here to help you create a meaningful memorial that honors your faith and traditions.

Dignity®
MEMORIAL

✧ LIFE WELL CELEBRATED® ✧

ROOSEVELT

MEMORIAL PARK

TREVOSE

RooseveltMemorialPark.com

215-673-7500

Leah Feldman, General Manager

FOREST HILLS / SHALOM

MEMORIAL PARK

HUNTINGDON VALLEY

ForestHillsShalom.com

215-673-5800

Samuel Dornsky, General Manager

WHITEMARSH

MEMORIAL PARK

AMBLER

WhitemarshMemorialPark.com

215-646-7500

Lauren Scudieri, General Manager

“Life is a succession of lessons which must be lived to be understood.”

— Helen Keller

*Providing funeral
counseling and
pre-need arrangements.*

*Goldsteins' Rosenberg's
Raphael Sacks INC.*

Caring. Committed. Compassionate.

215-927-5800 • 800-622-6410

www.GoldsteinsFuneral.com

For the deaf and hard of hearing:

267-331-4243 (Sorenson VP)

PHILADELPHIA CHAPEL

Carl Goldstein, Supervisor

6410 N. Broad Street • Philadelphia, PA 19126

SUBURBAN NORTH CHAPEL

Bruce Goldstein, Supervisor

310 2nd Street Pike • Southampton, PA 18966

ROTH-GOLDSTEINS' MEMORIAL CHAPEL LLC

Stephen T. Collins • Mgr. Lic. No. 3355

116 Pacific Avenue • Atlantic City, NJ 08401



Shopping On Line? You Shop. Amazon Gives to Beth Or.

Visit **smile.amazon.com** and search for **Congregation Beth Or** to designate as your charitable organization.

Once you sign up for our unique link, 0.5% of the price for all eligible purchases benefits our community.

Be sure to bookmark **smile.amazon.com** on your computer and use it each time you shop!
Only purchases made at **smile.amazon.com** are eligible for donation.



★ SESAME DAY CAMP
★ CAMP ROCKWOOD

SRC
SESAME ROCKWOOD CAMPS
FRIENDS HAPPEN HERE™

★ ROCKWOOD ADVENTURES TEEN TRAVEL

- Day Camp: 4 to 8 Week Sessions
- Mini-Day Option (3, 4, & 5 year olds)
- American Red Cross Swim Program
- Arts & Outdoor Adventure Activities
- Extensive Sports Program
- Great Lunches & Snacks & Much More!
- Teen Travel Program: 1 to 7 Week Options for 6th through 10th Grades
- Door-to-Door Transportation

*Offering Your Child the Finest in Caring Staff,
Diverse Programming & Outstanding Facilities.*

Howard & Dale Batterman,
Owners/Directors

610.275.CAMP **www.srdaycamps.com**

ACCREDITED

The advertisement features a collage of images showing children participating in various camp activities: a boy jumping in a pool, a boy playing basketball, a boy playing frisbee, a group of children on a roller coaster, a group of children wearing goggles, and a group of children wearing hard hats. The background is a light blue sky with clouds.

CAMP GREEN LANE

Located in Green Lane, PA

Experts in creating memories and friendships that last a lifetime — since 1926.

Exciting special events and out-of-camp trips!



Become a part of our Camp Green Lane family!

215-234-9211

info@greenlane.com • www.greenlane.com

Melissa and Jay Freedman and Rene and Adam Weiner
Owners/Directors



Independent Senior Living Advisors

S³LIVING
REAL ESTATE

THINKING ABOUT –

- Moving?
- Moving to Independent Senior Living?
- Selling your home?

THINK ABOUT –
S³Living **Strategic Senior Solutions**

S³Living helps Active Adults find the perfect 55+ Community or Life Plan Community (CRRC).

S³Living represents **YOU**, not the communities. We will recommend the best solution to meet your individual needs.

Call the Delaware Valley's leading expert on Independent Senior Living

David Reibstein, President
215-870-7362
Call today for a free consultation
S3Living.com

MID PENN BANK[®]

1-866-642-7736 | midpennbank.com

Member FDIC

CAMP AMERICA DAY CAMP



"Creating life-long friendships since summer 1967"

www.camp-america.com

215-822-6313



Fun • Friendship • Forever

www.elbowlane.com

215-343-2120



ORTHODONTICS

www.bracesdocs.com

Doylestown
215.238.5301

Glenside
215.885.6020

Perkasie
215.257.5331



**Rhonda & Larry Rosenthal
& The Rosenthal Group**
Experience Makes the Difference



Fox Roach Realtors
721 Skippack Pike, Suite 1
Blue Bell, PA 19422
215-432-5610
RhondaLRosenthal@gmail.com
RhondaRosenthal.com



**BERKSHIRE
HATHAWAY**
HomeServices

Great smiles
begin with...
**Dr. Jamie
Goodreau**
Specialist in Orthodontics

**Affordable
Payment Plans**

*Now Participating
With Many Major
Insurance Companies*



- Certified Invisalign Orthodontist
- Treatment of Children & Adults
- TMJ Treatment

Call today for a
FREE Consultation!
(215) 997-0200
drgoodreau.com

LOCATION:
HighPoint Business Center
1300 Horizon Drive
Suite 117
Chalfont, PA 18914



Opening Mid 2021 Joseph Levine & Sons Blue Bell, PA

During the construction phase, any family making advance funeral planning for the use of this facility, will be provided a credit towards chapel services (Blue Bell location only). A funeral director from our staff can meet with you in the comfort of your home or any of our offices. If pre-arrangements already exist with other establishments, you may be able to transfer them to our firm. Since 1883, a Levine family member or one of our funeral directors are always available to answer any of your questions or concerns.

By fulfilling a promise to the Montgomery County community, our newest facility conveniently located in the heart of Blue Bell, PA, will feature modern Memorial Chapels on just under 5 acres of land.

JOSEPH *Levine* & SONS

SERVICE • TRADITION • DIGNITY
www.levinefuneral.com

With both a large and small chapel the funeral home will feature:

- Flexible event space with separate reception room for catered family gatherings
- State-of-the art audio and video equipment
- Funeral service webcasting availability
- Parking for almost 200 vehicles
- Private arrangement offices and family rooms
- Minutes away from the PA Turnpike, Route 476 (Blue Route) and Route 202

Joseph Levine & Sons, Inc.

Jonathon D. Levine, Supervisor
4737 Street Road
Trevose, PA 19053
(215) 942-4700

Joseph Levine & Sons, Inc.

Brian M. Levine, Supervisor
2811 West Chester Pike
Broomall, PA 19008
(610) 325-2000

Haym Salomon Memorial Park

Adam D. Levine
A Levine Family Company
200 Moores Road
Frazer, Pa 19355
610.644.1100



LIVE YOUR BEST LIFE

Experience the Barbara Brodsky Suites at Lankenau Medical Center

You value knowledge. You value exceptional medical care. You value privacy.

When you need to be in the hospital, you can find exceptional medical care in an elegant healing environment at Lankenau Medical Center, part of Main Line Health. During your stay in the artfully appointed Barbara Brodsky Suites, you will have a personal concierge to see to your needs, deluxe amenities to make your stay more comfortable, chef-prepared gourmet meals, and private living and dining areas for you and your loved ones. It's these extras that create an incomparable experience.



To see a virtual tour of the Barbara Brodsky Suites, visit mainlinehealth.org/brodsky. To check availability, call 484.476.6180 or email BrodskySuites@mlhs.org.



Beth Or Spotlight

September-October 2021 | Volume 66, Issue 1 | Elul-Tishrei-Heshvan

239 Welsh Road, Maple Glen, PA 19002

Phone: 215-646-5806 | Fax: 215-646-0173 | Website: www.bethor.org

Senior Rabbi Gregory S. Marx
Associate Rabbi Jason Bonder
Cantor David Green
Adjunct Cantor/Jr. Choir Director Jaime Murley
Executive Director Amy S. Abrams
Director of Religious School Aaron Nielsenshultz
Early Childhood Director Sara Baum
Asst. Early Childhood Director Sharon Carlin
Director of Accounting Suzanne Diamond
Director of Marketing & Communications Judy Trias
Director of Member/Youth Engagement Jillian Peskin
Executive Director Emerita Elizabeth L. Hirsch, F.T.A.

President Gwen Silverstein
Vice President Leslie Weiss
Vice President Jeffrey Green
Vice President Alyson Caplan
Treasurer Evan Segal
Assistant Treasurer Doug Burtnick
Parliamentarian Jennie Nerenberg
Secretary Lisa Goldoor
Brotherhood President Doug Burtnick
Sisterhood President Melisa Lubinski
Beth Or Spotlight Editors Ellen Werther/Judy Trias



Stay Connected!



Join our



Facebook page at www.facebook.com/CongBethOr

or Instagram



@[@CongregationBethOr](https://www.instagram.com/CongregationBethOr)

Like, comment and share our posts!

Sign up for our weekly Chai-Lights and Community Matters
e-mail blasts on the Beth Or website homepage, www.bethor.org.

