



Beth Or Spotlight

July-August 2020 | Volume 64, Issue 6 | Tammuz-Av-Elul



Congregation Beth Or publishes Beth Or Spotlight through an endowment from the Florence and Rhoda Kramer Memorial Fund

Welcome to a special electronic-only version of the Beth Or Spotlight.

Our congregation continues to follow the guidance of the CDC, government officials and the recommendations of health professionals during the current pandemic. While the CECE is reopening in July and B'nai Mitzvah in August will take place in person (both with restrictions), we are otherwise remaining a virtual synagogue for now and continuing to provide a variety of experiences to keep our members connected with each other while we cannot be together in person.

Please take the time to read the articles, review the photos, and kindly, take note of our loyal caterers and advertisers who are mostly small businesses which have been deeply impacted by the shut down. Your support is greatly appreciated.

July Worship Schedule

Friday, July 3 Shabbat Hukat-Balak

6:30 pm Family Worship Service
with Rabbi Bonder & Cantor Murley
– Facebook Live

Friday, July 10 Shabbat Pinchas

7:30 pm Shabbat Worship Service
with Rabbi Bonder & Cantor Murley
– Facebook Live

Friday, July 17 Shabbat Matot-Masei

7:30 pm Shabbat Worship Service
with Rabbi & Laurie Marx –
Facebook Live

Friday, July 24 Shabbat Devarim

7:30 pm Shabbat Worship Service
with Rabbi Bonder & Cantor Green
– Facebook Live

Friday, July 31 – Shabbat Vaet'hanan/Nahamu

7:30 pm – Shabbat Worship Service
with Rabbi & Laurie Marx –
Facebook Live

August Worship Schedule

The August worship schedule will likely be virtual. In-person Lifecycle events will be invitation only and limited to a small group. Please read your Community Matters & Message from Beth Or emails or refer to the website calendar for specific details.

Saturday, August 1

11:00 am Shabbat Worship and Bat Mitzvah of Sydney Salin, daughter of Michael and Donna Salin

Friday, August 7 Shabbat Ekev

6:30 pm Family Worship Service

Saturday, August 8

11:00 am Shabbat Worship with the Bat Mitzvah of Claudia Cagnoli, daughter of Joe and Lori Cagnoli

Friday, August 14 Shabbat Re'eh

7:30 pm Shabbat Worship Service
with Adult Confirmation

Friday, August 21 Shabbat Shoftim

7:30 pm Shabbat Worship with
Adult B'nai Mitzvah

Saturday, August 22

11:00 am Shabbat Worship with
the Bat Mitzvah of Jordyn Levine,
daughter of Brian and Jen Levine

Friday, August 28 Shabbat Ki-Tetze

7:30 pm Shabbat Worship with
Confirmation

Saturday, August 29

11:00 am Shabbat Worship with the
Bat Mitzvah of Jenna Seidman,
daughter of Michael and Rhonda
Seidman

Table of Contents

From the Rabbi's Desk/Rabbi Gregory S. Marx.....	1
President's Corner/Josh Gottlieb	2
Candle Lighting.....	2
From the Rabbi's Desk/Rabbi Jason Bonder.....	3
From Cantor David Green	4
From Cantor Jaime Murley	5
Religious School News.....	6
10th Grade Confirmation, Adult Confirmation & Adult B'nai Mitzvah	7
B'nai Mitzvah	8
Congrats to our Grads!	9
Early Childhood Education.....	10
GET CONNECTED Business & Career Network.....	11
Beth Or Shuk (Marketplace).....	12
Membership & Youth Engagement	13-14
Volunteer Spotlight.....	14
Virtual Beth Or in Pictures.....	15-17
Social Action.....	18
Social Justice	19
Brotherhood.....	20
Sisterhood.....	21
Celebrate Your Simcha	22-23
Chai Light	24
Memorials & Contributions	24-27

Speaking up and Speaking Out

Rabbi Gregory S. Marx, Senior Rabbi

According to a midrash, Pharaoh had three advisers. According to the ancient legend, Pharaoh didn't know what to do with the Jewish People. They were growing by leaps and bounds. On the one hand, he hated them. On the other hand, they were valuable property. Should he destroy them or not? He turned to his three advisors and asked them what they thought. His three consultants were Bilaam, the reviled Midianite prophet called upon to curse the Israelites as they travelled from Egypt to Israel, Yitro, Moses' father in law, and the long suffering prophet, Job. Balaam said, "Kill them." Therefore, according to the Midrash, God punished him. The rabbis taught that he died in the wilderness, alone, playing off his name "Bilo Am," (without a people). Yitro said, "Save them." For this Pharaoh exiled him to Midian, where God eventually rewarded him by making him the father-in-law of Moses. Job kept silent. Consequently, he got boils.



Rabbi Gregory S. Marx

From the Rabbi's Desk

I see two truths: **1)** We get what we give. Yitro saved, and was saved. Balaam tried to kill, so he was killed. **2)** Don't sit on the sidelines. Job kept his mouth shut and got boils. He literally exploded by keeping

still. There are times, the rabbis infer, when we must speak out even if it costs us.

This is a moment of reckoning and we cannot sit on the sidelines of the racial/national divide. Though I check off "white" on the census forms, I know that many on the hard right do not see me as such. I also know that our historical suffering as a people cannot be an excuse to be indifferent. Institutional racism is a blight on our world.

We cannot be silent when those who fight racism also attack Israel. The fact that there are some in the BLM (Black Lives Matter) community who are anti-Zionist should not force us to choose between two goods: supporting Israel and standing up for equality. This is not a zero sum game. I can be both a proud Zionist and a fighter for racial equality.

We must be mindful that we Jews are a multiracial people, some being Ashkenazi, Sephardi, Mizrahi; European, North African, Southeast Asian, Ethiopian, Chinese, Yemenite, Caribbean, Persian, mixed-race; Jew-by-choice or Jew-by-birth. We don't all look alike and we need to be mindful of that when we see other Jews who do not look like us.

We must not be ignorant of our own oppression. Our people have been refused work and entrance to restaurants, universities, hospitals, clubs and whole towns for being Jewish. We have been beaten, shot, burned and made into soap for being Jewish. And we have been slaughtered while praying in our synagogues. But right now, in this moment, we aren't followed in stores, systematically purged from voting rolls, assumed to be janitors, shot by the police or by vigilantes while jogging in our neighborhoods. No one should resist arrest, but at the same time, getting strangled or shot in the back by law enforcement is an outrageous response.

Never forgot that those who hate blacks also hate us. In Charlottesville, as they protested the black community, racists chanted, "Jews will not replace us." The haters believe we are the chaos-agents who have spawned all efforts to tear down the white way of life. Jews are seen as sneaky interlocutors seeding the race war and inciting black, indigenous, and other people of color to rebel against white control. Jews, like George Soros, are believed to be manipulating the blacks to riot and tear down white America.

There is a time for silence and a time for speech, said Ecclesiastes. Now is a time for speaking up, peacefully marching, confronting our own racism, and that of our world and voting our principles or we may end up suffering like the prophet, Job.

Putting Things in Perspective During the Pandemic

Josh Gottlieb, Beth Or President

I haven't seen my granddaughter Alexandra (almost 2) and her parents, son Jonah and daughter-in-law Laura, in person for months. I have only seen Aaron, Stephanie and Annie (almost 1) a few times while social distancing outside. Aside from our neighbors over the fence, the only people I see are strangers when we walk the dogs daily (actually Trevor pulls me around the neighborhood while Jenny or Abby walks little Maggie), or people behind masks during senior shopping hour at a supermarket or Home Depot. Otherwise, my human interaction comes from a telephone, occasional Facetime, or many Zoom meetings for Beth Or and work.



Josh Gottlieb

As I thought about writing this column, I realized that this has caused me to be very inwardly focused. I spend every day with Jenny, my fiancée, her daughter Abby, our two dogs and the TV. We watch a lot of news and entertainment. Jenny and I read a lot of news as well. But, due to the isolation that we are all going through, my world has shrunk.

President's Corner

On Saturday, June 6, there was a march in Ambler calling for peace, unity and justice, supporting calls for change, and condemning the racist rhetoric of some of our leaders. Rabbi and Laurie Marx led a group of Beth Or congregants, although I didn't recognize everyone right away due to masks. Other spiritual leaders and their congregants joined in as we marched through the town and then heard remarks from NAACP leaders and the clergy in attendance.

The diversity of the crowd, racially, religiously, age (toddlers to seniors) and the warm and caring spirit that permeated throughout was inspiring. The speakers were on target as they spoke of our joint obligations to make this world, our country and our local community a better place for all of us. Rabbi Marx touched me when he said, "only some of us are guilty, but all of us are responsible".

We are living in very difficult times. We are all concerned about the potential (or reality) of the pandemic impacting our loved ones. My heart goes out to those who have lost people they love. Many among us may have experienced a reduction of income or even loss of their job. And layered on top of all this is the social upheaval convulsing our country.

I believe that it is our responsibility as reform Jews to take a stand on critical social issues that are in keeping with our core tenets and beliefs. We must stand for equal justice for all under the law. We must stand for equal opportunity for all. We must stand shoulder to shoulder with our black brothers and sisters and all people of color so that this dream can be achieved. I urge everyone in the Beth Or community to take action in whatever way feels right to them. Even in these times of distancing, we can still set examples. I hope my marching for justice tells my family, Aaron, Stephanie and Annie, Jonah, Laura and Alexandra, that our words and actions matter.

July/August Candle Lighting

Friday, July 3 • 8:15 pm

Friday, July 10 • 8:13 pm

Friday, July 17 • 8:09 pm

Friday, July 24 • 8:04 pm

Friday, July 31 • 7:58 pm

Friday, August 7 • 7:50 pm

Friday, August 14 • 7:40 pm

Friday, August 21 • 7:30 pm

Friday, August 28 • 7:19 pm



Rabbi Jason Bonder

From the Rabbi's Desk

Each and every young
adult we call to the
Torah is beyond special.
But this year's class is
deserving of even
more praise.

Almost Perfect

Rabbi Jason Bonder, Associate Rabbi

On June 2, 2010, Detroit Tigers pitcher Armando Galarraga threw a remarkable game. He got every batter out, in order, through the first 26 batters of the game. That's 8 and 2/3 innings without giving up a walk or a hit. 27 outs in a row is as good as you can get – it's a perfect game. In over 150 years of Major League Baseball, only 23 pitchers have achieved perfection. With two outs in the 9th inning, Galarraga threw a pitch that was grounded to the first baseman. While the first baseman fielded the ball, Galarraga ran to cover first base. The first baseman cleanly fielded it and threw the ball to Galarraga. Galarraga caught the ball with his foot on the base before the runner got there...

The umpire called the runner safe. It was ruled a hit. Perfection was lost.

The video showed, clear as day, that the runner was out. Galarraga had indeed done everything right to record the 27th out, but the umpire made the wrong call. That game in the summer of 2010 was played in the era before instant replay and the reversal of umpire rulings. The call on the field stood. Armando Galarraga would not have his name added to the elite list of pitchers who have thrown a perfect game.

I can't name every person who threw a perfect game in Major League history. I haven't spent the time to commit it to memory, but I make sure to remember Armando Galarraga's name. I'm equally impressed by everyone who has thrown one but I feel a duty to remember his name because he did all the right things, but chance would sweep history away from him.

Starting this summer, we have a long list of "Armando Galarraga's" here at Congregation Beth Or. A whole class of *B'nai Mitzvah* students did all the right things. They studied. They wrote *divrei Torah*. They attended services. They did mitzvah projects to help fix the world. And just as everything was looking like it was going to be absolute perfection, Coronavirus struck. Their big days were postponed.

Each and every young adult we call to the Torah is beyond special. Each brings unique gifts to our community. But this year's class is deserving of even more praise. So please consider making our upcoming *B'nai Mitzvah* feel a bit more special. We highlight them in each edition of Spotlight. Perhaps consider sending them a congratulatory note. Perhaps, if and when it's safe, consider attending a Shabbat morning service to show your support. Or perhaps you'll think of your own unique way to honor them.

To say that this year's *B'nai Mitzvah* class was thrown a curve ball is an understatement. Let's make sure that when they are called to the Torah, we make it just a little more perfect.

Celebrating Judaism Virtually

Cantor David Green



Cantor David Green

Lori and I were scheduled to celebrate my niece's Bat Mitzvah in Amsterdam this summer. Due to Covid-19, it was rescheduled as a Zoom Bat Mitzvah. At first, I was so disappointed.

We were really looking forward to returning to Amsterdam to be with our entire family to celebrate this joyous event. While we could not kiss or hug our family members, the Zoom Bat Mitzvah turned out to be such a celebratory occasion. We prayed, sang, cried, laughed and schmoozed for hours on Zoom. The technology did not replace being there, but on many levels it did create an opportunity to celebrate a most joyous event with our family.

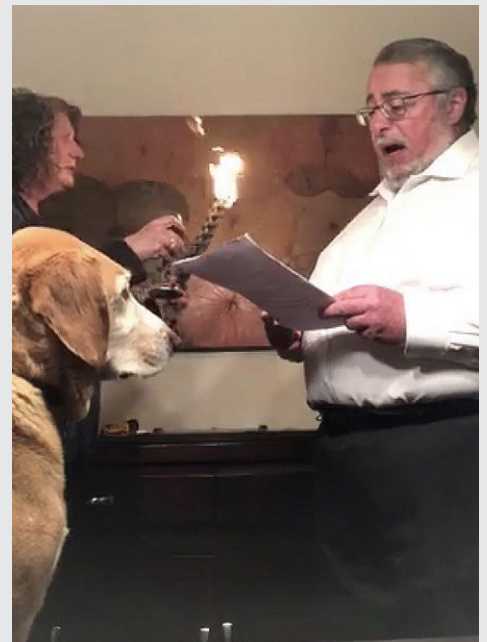
I have found this to be the case in serving our Beth Or community these last few months. I make hundreds of calls a week tutoring Bar/Bat Mitzvah students on Facetime. I reach out to members who are isolated or too ill to get out. I also call many congregants to share life cycle events with them. We have done Zoom Shiva services, Zoom Shabbat and Holiday services and even a Zoom Cantor's Concert.

In some respects, Zoom has its distinct advantages. I had friends and family in Europe and Israel who would not have been able to attend my niece's Bat Mitzvah in Amsterdam, but were able to be there for it virtually.

Many of our Beth Or congregants cannot drive at night or are physically not able to attend events at Beth Or. Using Zoom, they are now able to be engaged with the community. Attendance at Friday Shabbat services and Torah Study has actually increased since Covid-19 started. This new technology cannot replace the human touch or reaching out in person, but it does in many ways, help draw the community closer together in these difficult times.

I sometimes wonder if one phone call to one person or a Zoom Jewish activity makes a difference. It is the same question I ask when I am meeting with an individual one-on-one in person. Does this make a difference? I believe it does. Maimonides, a great Jewish scholar and physician, also believed it made a difference. He stated: "If one preserves the life of one person, it is as if he saved the whole world."

When we Facetime or Zoom with a member of our community, we make a difference in their lives and in ours. Together, we will make a difference in helping all of us to maintain our sense of Jewish community here at Beth Or.



Junior Choir Gets A Makeover

*Cantor Jaime Murley,
Jr. Choir Director*

I am excited to announce a few changes in the Junior Choir beginning in September. Rather than have just one Junior Choir, we will now be splitting our youth music program into two fabulous singing groups: **Junior Choir** and **Chai Notes**!

Junior Choir — This choir will be open to students in grades 1-6 (Yes!!!! First graders may now join the junior choir!!!!) and will sing all of the Beth Or and Jewish camp favorites. The choir will rehearse 3 Sundays a month for ONE HOUR at the conclusion of Sunday Religious School, where there will be a combination of singing AND schmoozing time. Lunch will be served at each rehearsal so that the choir will have time to bond over meals, play games, have meaningful conversations, and develop lasting friendships.

Chai Notes — This singing group will be open to students in grades 7-12 and will serve as an elective in our YOBO program. Chai Notes will have TWO HOUR rehearsals once a month while students are already in the building for YOBO. "Chai Notes" will sing more complex musical compositions along with awesome Jewish A Capella tunes, to match their growing musical tastes and abilities! This group will also share a meal with peers, providing much needed social time with friends.

BOTH SINGING GROUPS will help lead different parts of the Family Shabbat services, holiday celebrations, and off campus performances. They will also continue to have social activities so that they can continue to build community with their Jewish song-loving peers.

If you have any questions about the new program, please don't hesitate to get in touch with me at jmurley@bethor.org

I can't wait to get started!

**These plans are subject to change based on COVID-19 guidelines.*



Jaime Murley



Important School Dates

Sunday School and Rishon
begins on Sunday, October 4

Sheini and Shelishi classes
begin on Monday, October 5
and Tuesday, October 6

RISHON
SHEINI
SHELISHI

Religious School NEWS

The Importance of Names

Aaron Nielsenshultz, Director of Religious School

I wanted to share with everyone some updates to naming that we're adopting for next year. If you remember, I announced that we're running a pilot program in 2020-2021 to try a Sunday Hebrew school option. Up until now, we've only offered Hebrew on Mondays and Tuesdays, with two sessions for our regular Sunday Judaics program. For 2020-2021, we opened a limited number of Sunday Hebrew classes in addition to our Monday and Tuesday Hebrew options. This update means that we'll offer Sunday Judaics from 9:30-11, followed by Sunday Hebrew from 11:15-12:45. We'll also offer our Monday and Tuesday Hebrew as usual from 4:30-6 and our 7th-12th grade program on Sunday nights from 5-7 pm

It's pretty common to refer to students' activities at the synagogue as Hebrew school, even if they only study Hebrew during specific sessions. Because of that, it's sometimes hard to hear the difference between Sunday School and Hebrew school; now imagine trying to listen for the difference between Sunday School and Sunday Hebrew school — that's a recipe for confusion!

The Religious School committee and I have therefore sought feedback on some naming options. From now on, our Sunday Hebrew program will be called **"Rishon."** Monday and Tuesday Hebrew will be called **"Sheini"** and **"Shelishi,"** respectively, and Sunday school will refer to our 9:30-11 am Judaics program. Where do these names come from? They derive from the Hebrew words for Sunday, Monday, and Tuesday — we didn't want to get too complicated!

When our calendar comes out, you'll see these name changes reflected there. The goal is to start the year with clarity and purpose, and I hope these new names will get us off to a good start.



Aaron Nielsenshultz



Leonard &
Madlyn Abramson
Education Center

CONGREGATION BETH OR

Beth Or Confirmation Class Of 2020 – 5780

Confirmation Service
Friday, August 28 at 7:30 pm*

We congratulate our congregants on their achievement in reaching their spiritual goal and recognize their passion and dedication to living a vibrant and committed Jewish life.

Delaney Benjamin

Jay & Amy Benjamin

Benjamin Dorsey

Bruce Dorsey & Jennie
Nerenberg

Julia Germer

John & Melissa Germer

Alli Gerson

Greg & Sheri Gerson

Raya Gilman

Jill & Howard Altman &
David Gilman

Sarah Green

Jeffrey & Samantha Green

Andrew Heisman

Scott & Elisa Heisman

Julia Lauren Horowitz

Michael & Sheri Horowitz

Margot Felice Klein

Stuart & Jamie Klein

Ari Michael Lasdon

Alan & Cari Lasdon

Charles Abraham London

Larry London & Carol Meyers

Ben Lotma

Keith Lotman & Amy Prosen

Morgen Jolie Lubinski

Daniel & Melisa Lubinski



Talia Rae Newman

Ellen Harris Newman &
Scott Newman

Joshua N. Platt

Christopher & Jenny Platt

Tyler Z. Pohl

Neil I. Pohl & Elizabeth Roth
Pohl

Zachary Thomas Porter

Scott & Jennifer Porter

Emmy Blue Rutberg

Erik & Fern Rutberg

Tobi Seligman

Danny & Judy Seligman

Jason Michael Selsley

Elliot & Beth Selsley

Naomi Shigon

Marshall & Judy Shigon

Alex Warsaw

Staci Warsaw & David Warsaw

Jessica Winegrad

Robert & Stephanie
Winegrad

Rafi Yanoff

Neal Yanoff & Jessica
Kleinerman

Emma Ziff

Harry & Andrea Ziff

Adult Confirmation – 5780

Friday, August 14 at 7:30 pm*

Elisabeth Hess

Nancy Flitter

Mark Randa

Robyn Randa

Allen R. Shapiro

Adult B'nai Mitzvah – 5780

Friday, August 21 at 7:30 pm*

Susan Ellen Bellos

Iris N. Fine

Dayna Horwitz

Aaron M. Lambersky

Lois Elaine Lambersky

Claudia Leslie

Ellen Levine-Smith

Melisa Evans Lubinski

Judy Greenberger Phipps

Andrea Joyce Sklenar

Robert M. Sklenar

**The Confirmation, Adult B'nai Mitzvah & Adult Confirmation will take place on the dates noted on this page. These services will be held live with attendance limited and by invitation only. They will be streamed for all others to watch remotely.*

Gregory S. Marx, Senior Rabbi

Jason Bonder, Associate Rabbi

David Green, Cantor

Josh Gottlieb, President

Amy S. Abrams, Executive Director

Aaron Nielsenshultz, Director of Religious School

Meet Our B'nai Mitzvah Students

Sydney Salin

August 1

For my Mitzvah project I will be raising money for the **Parkinson's Foundation**. One of the reasons I picked this charity is because my grandfather was diagnosed with this disease 5 years ago and he is very special to me. Approximately 60,000 people are diagnosed with this disease each year in the United States.

In addition, for my Bat Mitzvah project, I have been volunteering at a Rock Steady Boxing gym, which is where people with Parkinson's disease box to help them improve their agility and movement.

In order to raise money for the Parkinson's Foundation I will be making cake pops and selling them to friends and family. To help fight this disease please visit this GoFundMe link: <http://bit.ly/2U9W2Hi>



Claudia Cagnoli

August 8

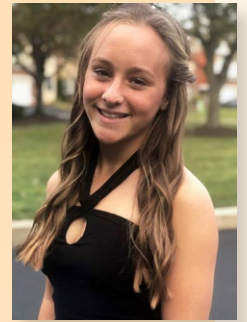
For my Mitzvah project, I'm supporting the **Juvenile Diabetes Research Foundation**. The JDRF leads the fight in finding a cure for Type 1 Diabetes by funding research, advocating for government backing and expanding access to treatment and support networks. On October 20, my family and best friend walked with me along with 8,000 walkers in the One Walk Philadelphia event. I personally raised \$875 for the walk, and the overall amount raised was \$934,141. I am involved with JDRF on an ongoing basis by helping to raise awareness of T1D and by raising money through fundraisers like bake sales. Look for me and my treats at Beth Or on Sundays between Religious School sessions and join me in giving hope to everyone impacted by this disease. One day, there will be a cure for T1D. In the meantime, JDRF can help pursue new treatments to keep us healthy until that day comes.



Jordyn Levine

August 22

For my Mitzvah project I am raising money for the **Pancreatic Cancer Action Network**. I have chosen this charity because my grandfather passed away from pancreatic cancer. I would like to help find treatments and support other people who are suffering from this disease, which is the third leading cause of cancer deaths. I am selling purple bracelets to help spread awareness and raise money. For more information, or to make a donation, please visit www.pancan.org.



Jenna Seidman

August 29

For my Mitzvah project, I volunteered at **R & R Soccer Foundation** because of my love of soccer and how it continues to shape me. It is a 501C that provides technical soccer training to underserved children in Philadelphia. Coach Ryan Griffith, who founded R & R Soccer Foundation believes that all children should have the opportunity to develop through soccer. I helped Coach Ryan run a soccer clinic, working with kids between the ages of 3-7 in Southwest Philadelphia at the Myers Rec Center. I am also planning to donate soccer equipment to the Foundation so that the children can practice their skills at home. For more information, please go to www.rrsocceracademy.com.



Mazal
Tor

Congratulations to the Class of 2020!

Thank you to everyone who submitted the 2020 graduates in your family. Beth Or is happy to celebrate with you!

For everyone reading this, please help us wish the following grads a hearty *Mazel Tov* on their accomplishments!

B'Hatzlacha (good luck) on your next endeavors,

The Clergy & Staff at Congregation Beth Or

Pre-K Through 8th Grades

Alivia Stone

Center for Early Childhood Education at Congregation Beth Or

Haley Wallach

Keith Valley Middle School

Lyla Sand

Thomas Fitzwater Elementary School

Mark Bonder

Center for Early Childhood Education at Congregation Beth Or

Olivia 'Livy' Collins

Center for Early Childhood Education at Congregation Beth Or

Rachel Brooke Jasner

Blair Mill Elementary School

Samantha Bromberg

Center for Early Childhood Education at Congregation Beth Or

Spencer Hillman

Center for Early Childhood Education at Congregation Beth Or

Max Werner

Lower Gwynedd Elementary School

High School

Adriana Lynne Jones

Wissahickon High School

Aisling Nielsenshultz

Upper Dublin High School

Alexandra Kafrissen

Germantown Academy

Ava Fuchs

Hatboro-Horsham High School

Brandon Shearer

Upper St Clair High School Pittsburgh

Erica Selsley

Hatboro-Horsham High School

Jaylin Conard

North Penn High School

Jessica Rabinowitz

SCH Academy

Kyle Voron

North Penn High School

Lucas D. Ratson

North Penn High School

Matthew Diamond

Central Bucks South High School

Nathan A. Robbins

North Penn High School

Rebecca Laing

Hatboro Horsham High School

Sally Meyers

North Penn High School

Sarah Burtnick

Wissahickon High School

Zachary Spain

Germantown Academy

College – Undergrad

Aaron Jaffe

University of Maryland: Baltimore County

Adam Sklar

Delaware Valley University

Ben Kron

George Washington University

Brooke Ross

University of Pittsburgh
**Graduated with Honors*

Bryan Dessner

Rensselaer Polytechnic Institute (RPI)

Danielle Sternberg

University of Michigan

Aaron King

Lynne University

David Asch

Temple University

Drew Gallant

Syracuse University

Isaac Marc Briefer

Bucknell University

Jacob (Jake) Kind

University of Pennsylvania
**Summa Cum Laude*

Jessica Vogel

Thomas Jefferson University

Rachel Mara Kaffey

University of Pittsburgh
**Summa Cum Laude with Two Degrees*

Sam Korman

Duke University

Samantha Zipin

Emory University
**Valedictorian of Emory School of Business*

Sydney Wolff

Penn State University

College – Masters

Adam Gutman

Georgetown University
**M.B.A.*

Alexandra End

London School of Economics

Elizabeth Stone

Immaculata University
**Masters of Science in Educational Leadership*

Jason Blocklove

Rochester Institute of Technology

Matthew Newman

American University

Matthew Wecht

Johns Hopkins University
**Masters of Science in Education*

Benjamin. Milakofsky

Columbia University
**M.B.A.*

Other Advanced Degrees

Allie Dayno

Lewis Katz School of Medicine at Temple University
**Doctor of Medicine (M.D.)*

Danya Briefer

Drexel University
**Residency in Emergency Medicine*

Dr. Meryl Abrams, MD

Thomas Jefferson University
**Completed Residency in Emergency Medicine*

Eric Ardman

University of Miami Miller School of Medicine
**Doctor of Medicine*

Proud To Be The CECE!

Sara Baum, Early Childhood Director

As our school year comes to an end we are able to reflect on all that we accomplished together. In the matter of hours teacher classrooms were extended into family living rooms, morning hugs became virtual high fives, and parents became teaching assistants. I feel so proud to be part of such a strong community! Thank you to staff, families, and especially our students for making this year successful! They say it takes a village to raise a child and this year was proof of that!!

We finished this year with closing Zoom meetings, car parades, and a Facebook Live Move-up Day. Even though we weren't able to say goodbye in our usual way, everyone showed their love and appreciation for each other. I want to say *MAZEL TOV* to our graduating Pre-K students!! We wish all of you well in Kindergarten and look forward to seeing you back in Religious School.

As we say goodbye to some, we are happy to be saying hello to others. We are so excited to be welcoming children back into our classrooms for camp!! We are all thrilled and eager to greet smiling faces once again!

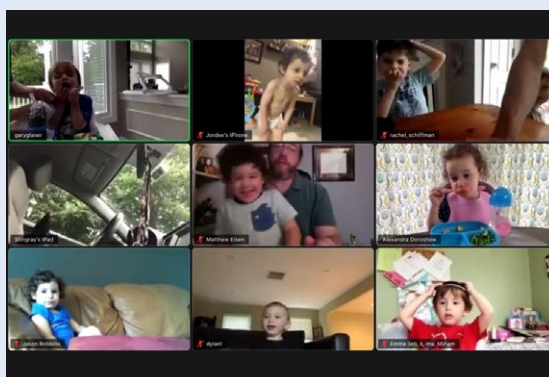


Sara Baum



**Zipporah S. Abramson
Center for Early
Childhood Education**

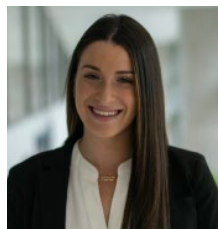
CONGREGATION BETH OR



Making Professional Connections through Beth Or's new GET CONNECTED Network

A Success Story

Gwen & Gracie Silverstein



GET CONNECTED: Beth Or Business & Career Network, has been fostering and developing meaningful relationships between congregants since its creation in November 2019. Below, is the story of how four congregants got connected in meaningful ways, only possible because of GET CONNECTED.

My name is Gwen Silverstein and I am grateful to my CBO community and the deep connections I have created over the twenty plus years of membership.

Last spring, I was seeking a new opportunity. I immediately thought to turn to my strong congregation for inspiration during this period. One of the first people I called to talk with about my job search was Lori Reiner, a fellow congregant. I knew of Lori through her husband Keith, who served on the Executive Board with me a few years prior. Lori is an amazingly talented leader, CPA, connector, business developer, wife, sister, mom, friend, colleague and so much more. I took the risk to reach out to her and ask her for her support in my job search. Lori immediately accepted my invite and introduced me to talented Human Resource Leaders in the Philadelphia area.

I kept in touch with Lori and my growing network monthly by writing articles, actively sharing what kind of companies I wanted to work at and even creating my own networking group. Five months into the search, Lori asked to meet again because she mentioned she may have an opportunity on her team for someone like me. I felt blessed when my starting point came full circle, and Lori offered me a full time position with her firm. I am thankful that Lori thought of me and even more grateful for the CBO community fostering this connection. Perhaps bashert!

With this, I recognized that the membership base at Beth Or had immense opportunity to connect those looking to fill roles, and those seeking work. Together, Amy Abrams and other dedicated congregants created GET CONNECTED, the perfect way for congregants to develop business and career opportunities.

After my 19 year old daughter, Gracie, received news of URJ Camp Harlam closure for summer 2020, she was in search of a meaningful way to spend her summer. While attending the May GET CONNECTED meeting, a congregant, Jennifer, shared a job opportunity. **Below is the story of how Gracie Silverstein and Jennifer Shemtob have developed a connection which has led to an amazing summer opportunity.**

With the news of camp being cancelled, I was heartbroken. I knew that the only way to fill this void would be to find a meaningful opportunity where I could make a tangible impact.

Jennifer Shemtob presented to the group that her tutoring company was growing and that she was looking for passionate educators to join the team. After a GET CONNECTED meeting, my mom reached out to me with an opportunity to apply for a tutoring position through her company, Teacher Time To Go.

Teacher Time To Go is "travel to you" tutoring company that provides Individualized Tutoring, Homework Help, Test Prep, and Executive Functioning/Organization Skills for students PreK-12th grade. They are currently serving Montgomery, Bucks, Delaware, and Chester Counties and have recently expanded into Philadelphia.

I was slightly hesitant as I have no teaching experience, yet was open to anything and everything. Jennifer was extremely responsive and immediately set up a call with the company's Director of Recruitment to discuss opportunities for me to get involved. Amidst the pandemic, the company was also shifting from in-person instruction to virtual sessions and there was a strong need to develop different summer learning platforms. A few zoom calls and a proposal presentation later, I was hired as Teacher Time To Go's Summer Intern. It is here that I can utilize my double major in entrepreneurship and finance to help rapidly boost the company's success. My responsibilities include developing a virtual summer platform, social media and marketing, database exploration, and financial literacy. I have been included in weekly calls with website designers, have led training calls to her 65 + team of tutors, and have brainstormed with the leadership team to develop new initiatives moving forward.

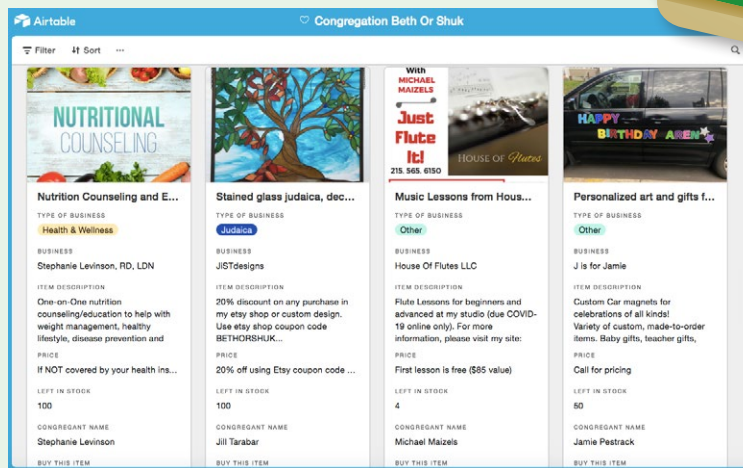
In this case, and multiple others, GET CONNECTED has had an immense impact on providing opportunities for those seeking. The congregation has a powerful force of individuals who are inspired to help others. Join us for the next virtual session!

Congregation Beth Or Shuk — Our Virtual Community Marketplace to Offer Goods & Services

The Congregation Beth Or Shuk (on-line marketplace) has been created as a way to help support our congregants' businesses that may have been impacted by the stay at home and social distancing guidelines associated with the COVID-19 pandemic.

Through the shuk, our members are able to offer goods & services to other members, build exposure for their business and hopefully boost revenue in a time when it is much needed.

It's easy to participate in the shuk with an offer, and simple to shop, too!



How Do I Sign Up My Business?

This site is meant to connect our members with each other and hopefully provide a boost for your business. Therefore, during the launch phase and at least through the rest of 2020, participation is FREE. Just follow these few steps!

1. You must be a Beth Or Member (age 18 or older), Spotlight Advertiser or Approved Caterer.
2. Come up with your offer (a product, service, gift certificate — whatever will benefit your business at this time), determine the number of items you want to offer (anywhere from 1 - 100) and provide a photo that represents your offer.
3. Fill out and submit the online **Business Participation Form** found on www.bethor.org/cboshuk.
4. Once your offer has been reviewed and approved, it will go live on the site until your items are sold out or you ask to have your offer removed.

How Do I Shop in the Congregation Beth Or Shuk?

Click the **Visit the CBO Shuk link**, www.bethor.org/cboshuk, and bookmark it as a favorite site! Once you click the link, you can view all of the current offers and start shopping! When you place an order, you will receive an email with instructions on how to pay for and/or redeem the offer with the vendor. The vendor receives an email too, so they know to expect to hear from you.

Please note — no monetary transactions take place directly through the shuk - transactions take place once the business owner and shopper communicate.

This initiative is also an off-shoot of Beth Or's GET CONNECTED: Business & Career Network. We'd like to give special thanks to our friends at Congregation Emanu-El of San Francisco, who graciously developed our Shuk template at no charge to Beth Or.

Please contact Jillian Peskin or Judy Trias at bethorshuk@bethor.org if you have any questions or need assistance with the Congregation Beth Or Shuk.

Reasons I Love Beth Or



Jillian Peskin

Jillian Peskin, Director of Member & Youth Engagement

During this time of staying at home, I have been hyper focused on what we are doing to interact with all of you virtually, and how we can do it better. How can we keep folks engaged? How can we engage more people? How can we attract people of different ages and stages? This made me think about all the things we did pre-COVID and what we will do again sometime in the future. As the Engagement Director, my greatest joy is being together with our Beth Or family. I started to write a list of all the things I love doing at Beth Or. This list has brought me joy while I've been working at home, away from the physical work that I love most.

I brought my stirring thoughts with me to our Beth Or staff meeting. I shared with my colleagues this list that I titled "*Reasons I Love Beth Or*" and asked them to each send me a few things they love doing or participating in, as well. I thought I would share them here with all of you, in hopes that you will enlighten me with things you love about

Beth Or — they might be tangible programs, or they might be the friendships you've made. Either way — it brings me so much joy and I hope you feel the same!

When you love your job, it never feels like work. I feel so blessed to be a part of the Beth Or family. Especially now, not just for myself, but for my growing family.

Reasons I love what I do at Beth Or (in no particular order):

Having lunch or dinner with our teens
Taking our teens to Washington DC to put their words to action with the RAC
Greeting at the front doors (especially on the High Holy Days)!
Being a little part of Camp Chaverim
Schmoozing in the Schmeat Café on Sunday mornings (the bagels are also incentive)
Working with Judy on Chai Lights emails to make sure everyone knows about all of our weekly events
Coffee Talk with Rabbi Bonder!
Giving tours — in person or virtually
Creating connections between congregants.
Helping families figure out their "Jewish Journey"
Working with committees and meeting new congregants
Checking in with congregants to see what they are enjoying most about their membership
Working on the spring fundraiser

and making sure it's more of a FUNdraiser!

Collaborating with the world's best staff

The Purim Carnival!

Visiting our campers at URJ Camp Harlam and Pinemere Camp.

More Reasons from the Clergy and Senior Staff (in no particular order):

Teaching Lifelong Learning Classes

Shabbat Worship Services

Life cycle events — joyous and sorrowful

Clergy calls of support

Zoom and Facebook engagement programs

Interfaith Programming

Offering & Engaging in Social Action/ Social Justice Programs

Israel movie night and discussion

Shabbat celebrations with children along with Bracha on the Bima

Clergy visitation following funerals and illness

Studying privately with B'nai Mitzvah students

Premarital sessions with clergy

Conversion study and preparation for potential converts

Partnering with the Wissahickon Faith Community Association

Offering Re-Intro to Judaism Class on Sundays

Teaching 6th Grade & Sunday Morning Hebrew

Meeting with B'nai Mitzvah families

Coffee Talk with Jillian!

Facilitating Support Groups

Adult B'nai Mitzvah and Adult Confirmation classes

Leading services: HHD, Shabbat, Shelosh Regalim

Cantor's Concerts and other Musical events

Hospital, Nursing Home and Hospice visits

Ecumenical events: MLK and Thanksgiving

Joint Synagogue choir and cantorial events

Passover Seders

Developing a love for Israel

Continued on page 14

Reasons I Love Beth Or *continued*

Mah Jong & Knitting Groups
Jewish holidays and festivals
Jewish Cooking Classes
Traveling with our congregants to visit Jewish heritage sites and Israel
Business and Career networking events to develop skills and achieve business/career goals
Beth Or Facebook & Instagram Social Media Engagement
Weekly Emails — Chai Lights, Community Matters
Keeping congregants informed
Our CECE Community
Creative Movement classes
Zumba class
Tot Shabbat
Bracha on the Bimah

Circle time
Art Activities
Science Experiments
Show and Tell
Virtual Learning
Celebrating Israel Week & Bike Day
Supporting weekly Jewish and Hebrew learning
Creating social opportunities for children and parents
Fostering a sense of Jewish identity
Providing Jewish role-modeling
Creating a safe space to try different ways to be Jewish
Establishing hands-on ways to interact with the world in a Jewish way
Welcoming every student and parent with a warm, genuine smile

Engaging students with our Hebrew tech classes every week
Providing learning through multiple learning styles in and out of our classrooms
Supporting our learning-difference students through the Garbose Fund
Being a role-model for young adult Jews in our classrooms with our classroom assistants
Enriching Hebrew language learning through conversational Hebrew
Supporting Hebrew language learners through one-on-one tutoring
Encouraging a love of music through Junior Choir

We Our Volunteers!

This is the time of year when we would typically celebrate our volunteers in person. Even though we aren't together, you are on our minds.

We want to take a moment to thank ALL of YOU! So many of our congregants give their time to make CBO a better place. We are grateful to all of you for your creativity, kindness, generosity, expertise, time and love! Simply put, Beth Or would not be the warm and caring place it is without all of our incredible volunteers!

From the bottom of our hearts — THANK YOU!

Rabbi Gregory Marx
Rabbi Jason Bonder
Cantor David Green
Cantor Jaime Murley
Amy S. Abrams
Suzanne Diamond
Jillian Peskin
Judy Trias
Aaron Nienshultz
Sara Baum
Sharon Carlin



VIRTUAL Beth Or

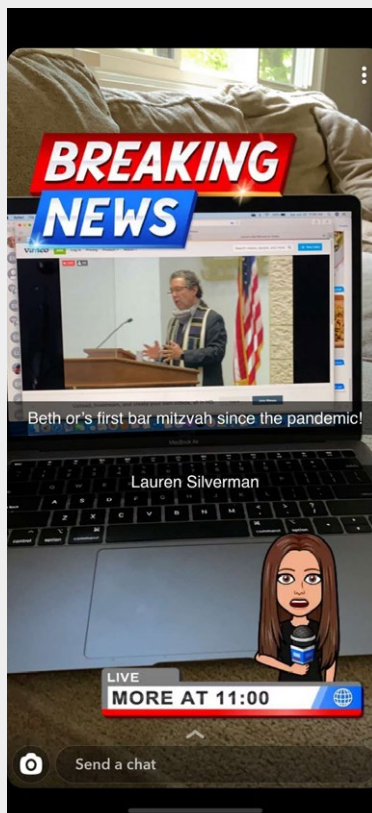
As the COVID-19 Pandemic stay at home orders were extended, our Beth Or community remained steadfast in staying connected. You continue to participate in record numbers in our many Zoom and Facebook Live events, as well as Collection Drives and Social Action programs.



A Shot of Resilience Series



CECE Teachers Visit a Student at Home



Beth Or's first Zoom Bat Mitzvah



Social Action Clothing Collection Drive



Origami Workshop for Beth Or Youth

So proud of our work with the interfaith housing alliance!

ifhaambler



ifhaambler TA DA! Look at our beautiful new upgraded apartment at #HopeGardens, thanks to the generosity...

Doing mitzvahs, 6 feet apart.

Brotherhood & Social Action Upgrade Our Hope Gardens Apartment

VIRTUAL Beth Or



Social Justice Solidarity March in Ambler



Baking Fun for K-6th Grade



Tot Shabbat with Rabbi Marx



Virtual Happy Hour



Social Action Food Drive



Young Family Shabbat Storytime with Rabbi Bonder



Coffee Talk with Rabbi Bonder & Jillian

VIRTUAL Beth Or



#FeedingTheFrontLines — Supporting Abington-Jefferson Hospital



Zoom Torah Study



Summer Games for K-6th Grade



Social Action, Brotherhood & Infinity Caterers partner to provide lunch for healthcare workers



Sisterhood Fun on Thursdays — Flower Arranging



CECE Student Celebrating Tot Shabbat at Home

Let us count the ways!

The Torah portion, *Bamidbar*, read in May, reminds us about the purpose and importance of counting. It prompted us to think about the number of ways that Beth Or congregants positively impact the disadvantaged, the isolated, and those facing a difficult challenge such as food insecurity. It also called to mind what we read in the Talmud: whoever saves a life is considered to have saved an entire world. 'Whoever' equals one.

Below is a June snapshot of how Beth Or is helping to repair the world.

1. Shari Coltoff witnessed a situation at Jefferson Hospital. A homeless man was being treated and asked to shower and change into clean clothes and a hat, as the ones he was wearing were bug-ridden. He lacked another set, so the medical staff presented him with the only articles that would fit from donations: white pants and a pink hat. The man was uncomfortable with these options and refused them. Therefore, after being bandaged, he put the same bug-ridden clothes and cap back on. Thanks to Shari, Beth Or will schedule a clothing drive to address this need.

2. Jody Pascal and Rachel Steinberg are co-chairing two Social Action Committee Summer Projects, meals for front-line workers, and a clothing drive for Our Closet. The numbers are in: 75 lunches were donated to Abington-Jefferson Hospital Covid-19 Feeding the Frontlines, and carloads of clothing were taken to the Our Closet warehouse in Delaware County. Abington Hospital expressed their appreciation for the outpouring of support for their health care workers, which has been a source of strength during the pandemic. And we can imagine that many families will appreciate the clothes that were lovingly donated by the Beth Or community. Our thanks to Fred Dugan and Bob Harris for helping with the deliveries.

3. Carole Chasen is the Committee chair of Beth Or's Summer Food Collections. Carole chose to hold multiple drives since the need is so great, one in June, another in July, the third in August. Deliveries of non-perishables will be made to food pantries in Montgomery County, including Inter-Faith Housing Alliance, Mattie Dixon, and Manna on Main. Our thanks to Fred and Bob for helping Carole with the transport of these items.

4. Still early in the season, Beth Or's Corner of the Land Garden led by Bruce Dorsey has already harvested romaine lettuce and spinach for the Inter-Faith Housing Alliance Food Pantry. Vegetables forthcoming include squash,

eggplant, potatoes, tomatoes, peppers, and zucchini. Our thanks to Jennie Nerenberg for delivering bags of vegetables to the Pantry.

(p.s. — if you want to get in on the action of sowing, tending, and harvesting this summer, please email brucedorsey11@gmail.com.)

5. Love and generosity are common threads that run through the Beth Or Knitting Circle chaired by Faye Benshetler. As of June, over the past six months, members of the Circle have brought light to more than 550 people who were in the hospital, recovering, living in transition or isolation, or working in an essential position without a mask.

- 66 fleece blankets (Abington Hospital, Fox Chase Cancer Center, Inter-faith Housing Alliance, and NORC)
- 14 lap afghans (Abramson Center)
- 104 handmade cards (Abramson Center and Dresher Estates)
- 205 masks (Abramson Center, Dresher Estates, Horsham Clinic, and Beth Or congregants)
- 1 isolette cover (CHOP NICU)
- 12 hats (IDF) + 58 hats (Karnell Cancer Center)
- 25 scarves + 24 hats + 20 afghans + 5 baby sweaters + 3 bears + 2 child dresses + 10 pairs of child shorts (Mitzvah Circle)
- 1 bear + 1 afghan (Beth Or congregant)

And there is more. In June, our young people learned how to create a tissue flower bouquet for nursing home residents and hospital patients, and congregants were given opportunities to donate blood to the American Red Cross, participate in Sleep Out America to help homeless youth, become a pen pal with Abramson residents, sew masks for people living in shelters, and sew surgical caps in high demand at Abington Hospital.

Why is it important to count? One reason is to understand the many ways we can live out the meaning of Tikkun Olam, repairing the world.

The Social Action Committee thanks you for your support, participation, and for making a difference!

Susy Krimker, Social Action Chair, susykrimker@gmail.com
Margie Chachkin, Social Action Vice-Chair, chachkin@aol.com

Grateful

A Beth Or congregant recently reached out to me to express gratitude for the strides we have made as a community through our social justice efforts.

Throughout the years, Rabbi Marx's relationship-building with the Wissahickon Faith Community Association has set the stage and the pace for our interfaith programming. What has developed from that relationship have been numerous joint efforts that bring us together to learn and mutual growth through each experience.

We have had the good fortune to collaborate on interfaith community projects like the 'Faith Builders' Habitat for Humanity. We have walked and stood together at vigils, Dr. Martin Luther King, Jr. celebrations, and, most recently, the Peaceful March through Ambler.

What this congregant was most appreciative of were the programs where we watched a film or heard from a panel of experts together as an interfaith community, followed by a group dialogue. Paramount to facing 'social justice issues' is communication. By watching films such as "13th" and "Quest," and by hearing from experts on 'Gun Violence as a Public Health Issue' or 'Reproductive Justice' we can become further educated through listening to another person's frame of reference and thus can more knowledgeably discuss differences and solutions.

The Social Justice Committee remains focused on bringing you future programs that focus on our mission: To educate, advocate and take action on issues affecting the rights and dignity of all people; to engage and activate our community in one of Beth Or's core values, *Tikkun Olam* — the Jewish responsibility to help make the world a better place.

I look forward to seeing you soon at Beth Or, or at a virtual congregational event.

Noah Fischer, Social Justice Committee Chair, noahfischer25@yahoo.com

Student Civic Engagement

The Union of Reform Judaism's Religious Action Committee will host trainings this summer for young people ages 14-29. There will be two groups: high schoolers and college/grad school and beyond.

I encourage you to learn more and sign up for one of the summer trainings at <https://rac.org/blog/2020/05/12/5-ways-get-your-teens-involved-reform-movements-2020-civic-engagement-campaign>:

Tuesday, July 28 at 5 pm EST
Sunday, August 23 at 3 pm EST



Beth Or Brotherhood

Paying It Forward

Allan Posner, Brotherhood President



Allan Posner



Brotherhood
CONGREGATION BETH OR
Fellowship • Community
Service • Support

I hope all our Brotherhood members, their families and friends are all safe and well. These are unusual and challenging times but as a unified congregation we will meet this unprecedented challenge and forge ahead. During this pandemic it would be very easy to take the bunker mentality. Run, hide, go below ground or distance ourselves from the outside world and others who may be suffering worse than we are. The stories are everywhere of lost jobs, death and food insecurity. As one nation we suffer and as one nation we will rebuild.

We must never forget that in order to build a stronger house, the cement that binds us together must be reinforced. The cement of human kindness and acts that are being performed has been vast. For many months, Brotherhood has been busy rebuilding and trying to repair our world.

Under the direction of Bob Cohen, we have been participating as best we can due to social distancing by delivering monthly food packages thru JRA. The Jewish Relief Agency supplies sustenance to those in need and our members are packing and delivering. Food insecurity is the top priority in our area with both elderly and young in need. Did you know that Philadelphia County has one of the highest concentrations of lower income elderly Jewish populations?

As members, many made contributions to our Covid 19 Fund that was established. Our goal was to collect and distribute money to food pantries and others in the surrounding area. These grants were then used to purchase in bulk the needed supplies. I am proud to say that Brotherhood gave \$5,000 to the following: Manna On Main Street, Mattie Dixon Food

Cupboard, Mitzvah Circle Foundation, Hebrew Free Loan Society of Greater Philadelphia and Beth Shalom Congregation Food Pantry.

Brotherhood along with Sisterhood helped renovate and prepare our synagogue sponsored apartment at Hope Gardens of Ambler. Homelessness is an offshoot of this pandemic and Hope Gardens allows qualified families to reside for up to two years while building a life complete with a job and stability. Many families arrive through the Interfaith Housing Network which Beth Or sponsors each February.

While we have all been busy, there is more to do. Food insecurity and homelessness will not go away any time soon. I encourage all our members to help. You may make a donation to: paypal.me/BethOrBrotherhood

Brotherhood stands committed to its core principles of Fellowship-Community-Service-Support. Please consider being a part of Brotherhood and our efforts. *Yasher Koach* to all who helped!

KOSHER WINE SALES

Now you can purchase kosher wine all year long and benefit Beth Or!

Use the Beth Or affiliate link on koshervine.com: <https://bit.ly/wine2020> or click the KosherWine symbol on the bottom right side of the Beth Or website home page, "Connect With Us" section.

- Over 700 Varieties
- Seasonal Specials and New Releases
- Easy On-line Ordering
- Ships directly to your home or anywhere in the U.S.

5% of all sales given back to Brotherhood to benefit Beth Or programming!

Questions? Contact info@bethorbrotherhood.org.



kosherWINE
com

Beth Or Sisterhood

Help Sisterhood Continue to Perform Acts of Kindness (Chesed) In Difficult Times

Lois Lambersky, Sisterhood President

We continue to live in unusual times where nothing should be taken for granted. While safety is a priority, financial instability can be a consequence. Consider making a donation to the Sisterhood Mitzvah Fund in honor of, in memory of or just because you can and care about our community. Sisterhood provides assistance to individual families, members of the local faith based alliance and other community partners when emergencies arise and needs don't fall under normal budgeted categories. Sisterhood has recently donated to the following:

Kleinlife (www.kleinlife.org) which operates the Home Delivered Meals Program. Beth Or Sisterhood contributed \$360 to help with the increased demand for weekly meal preparation. Due to the pandemic, people with food insecurities has considerably increased.

Reverend Charles W. Quann of the Bethlehem Baptist Church to which Beth Or Sisterhood sent a donation in support of the ongoing fight against racial injustice. We deeply value the bonds of friendship that have grown between our congregations over the years and will stand in solidarity with our extended faith-based family.



Sisterhood preparing meals for Kleinlife prior to COVID-19.

WAGS Rescue and Referral is associated with Horsham Veterinary Hospital and it was brought to our attention that the Rescue was in need of veterinary supplies as a result of the recent pandemic. Roughly 6.5 million dogs and cats enter shelter care each year. With changes in staffing due to safety measures, the inability to hold fundraisers, and people too ill or hospitalized that cannot care for their pets, these systems have been under great strain. In keeping with Jewish law, which teaches us to have compassion and concern for animals and the environment, Sisterhood donated to help restock critical supplies.

If you would like to make a donation to the Sisterhood Mitzvah Fund, go to the Beth Or website and click on Donate. Click the link labeled Program and Community funds. Sisterhood will send an acknowledgement of your donation.



Lois Lambersky



Sisterhood

CONGREGATION BETH OR

Fellowship • Community
Service • Support

Please Support the

Tarshis Gift Shop

Proceeds Benefit Beth Or Sisterhood Programs

Stop in for these items and more:

- Holiday Items
- Mezuzot
- Hamsas and other Wall Art
- Tallit and Kippot
- Bar/Bat Mitzvah Gifts
- Wedding Smash Glasses and Gifts
- Jewelry
- Home Giftware
- Books for Adults and Children
- Children's Toys and Games
- Baby Gifts
- Occasion Cards

Hours: The Gift Shop is now open by appointment only, Monday - Thursday, 9 am - 2 pm. Contact Holly Green (215-805-8597) or email tarshisgiftshop@gmail.com to schedule your appointment.

Discounts available for Sisterhood Members and Beth Or Staff | Great Monthly Sales and New Arrivals



Celebrating Your Simcha

Our beautiful building provides the perfect place to celebrate your family's simchas.

Our catering partners on the Approved Caterer List — shown below and published on our website (www.bethor.org) stand ready to provide delicious food for your event. They can provide menu options at a range of prices designed to meet your specific needs and budget.

We hope that you will consider having your celebrations at Beth Or. To learn more about hosting an event at Beth Or, please contact Amy Abrams at 215-646-5806.

Approved Caterer List — 2019/20

Annemarie's Cuisine

Annemarie Silva215-806-7675

Ben & Irv's Deli

Lennie or Michael.....215-355-2000

Betty the Caterer (Kosher)

Jeff Kalinsky215-224-8400

Go2eventplanner

Arlene Rotfeld516-909-8580

Infinity Caterers

Fred Morganstein.....215-509-7280

Panache Catering by Foodarama (Kosher)

Gary Rosenwald215-633-7100

Pumpnick's Deli

Jeff Klein215-393-5800

Annemarie's Cuisine

Be A Guest At Your Own Event

CHEFS • SERVERS • BARTENDERS

Baby Naming, Bris, Kiddush Lunch, Birthdays,
Bar & Bat Mitzvah, Weddings, Showers,
Graduations, Funerals, Shiva Dinners

215-806-7675

www.annemariescuisine.com

Email: catering@annemariescuisine.com

Looking forward to making your next event a success!



Go2eventplanner

Go2eventplanner.com

Specializing in At-Home/Temple Catering
and event coordination, with Custom Menus, and
Artistic Presentation

**Engagements, Showers, Garden Weddings,
Mitzvahs, Tent Parties**

Let's do Something Wonderful Together!

Arlene Rotfeld, CIA Food Stylist

Cuisine | Staff | Chefs | Rentals | Design

go2eventplanner@gmail.com

516-909-8580



Corporate & Social Catering

Ben & Irv
Restaurant & Delicatessen

1962 County Line Road
Huntingdon Valley, PA 19006

PH (215) 355-2000
FAX (215) 364-6638

Extended kiddushes, mitzvahs, baby namings & more



Infinity
CATERERS

(215) 509-7280

infinitycaterers.com

4401 Cresson Street • Philadelphia PA 19127

Panache Caterers

BY FOODARAMA

CATERING FOR ALL OCCASIONS—IN YOUR HOME, OFFICE, OR
TEMPLE—FOR OVER 50 YEARS—CERTIFIED KOSHER



CALL FOR YOUR FREE MENU AND PARTY PLANNING GUIDE
215-633-7100 888-309-3800

WWW.FOODARAMA.COM

DELICATESSEN
PUMPERNICK'S
RESTAURANT

Pumpernick's catering department guarantees to
impress your guests. Smoked Fish, Deli, Sandwich, Wrap
Trays and more. Bar/Bat Mitzvah's graduations, Birth-
days, Sporting Events, Shiva Dinners and more.

215-393-5800 • pumpernicksdeli.com

Chai-Lights — July/August 2020

May Their Memory Be A Blessing

Suzanne Roberts, mother of Brian Roberts

Arnold Snyder, father of Liz Shohen

Vicki Sklar, wife of Bruce Sklar & mother of Jeremy Sklar

Elizabeth Debby Malissa, wife of Dean Malissa, sister-in-law of Phyllis & Gary Finkelstein & Aunt of Lauren Hellman

Edward Schwartz, brother of Marv Schwartz

Steven Lubinski, father of Daniel Lubinski

Anna Roellinghoff, grandmother of Kait Komeleski

Dora Wirtshafter, grandmother of Jamison Jaffe

Audree Singer, mother of Laurie Marx

Julian Weinstein, father of Robert Weinstein

Rose Pohl, grandmother of Pam Bloom

Bobbie Gomer, mother of Shawn Schurr

Roy Gomer, father of Shawn Schurr

Renee Magid, mother of Melissa Codkind

Herbert Portney, father of Kevan Portney

Seymour Klipper, father of Andrea Papsin and grandfather of Rachel Stolzenberg

Harold Berger, father of Jim Berger

Robert Silverman, husband of Randi Leavitt

Blanche Chanin, aunt of Andi Becker-Arnold

Joe Schwartz, husband of Libby Schwartz

Doris Pohl, mother of Neil I. Pohl

Mazel Tov

Birth of Cora Rose Stark, granddaughter of Alan & Mary Jean Stark

Birth of Ayala Lea Hansborough, granddaughter of Bill Brown

Birth of Braylen Kai Milakofsky, granddaughter of Steve & Marsha Milakofsky & great granddaughter of Myer Bernstein

Birth of Riley Brooke Posner, granddaughter of Allan & Andrea Posner

Wedding of Michael Berlin, son of Norm & Betsy Berlin, to Mindy Tang

Oneg and Flower Donations

August Donation:

Oneg & Flowers:

August 1 • Michael and Donna Salin in honor of Sydney Salin's Bat Mitzvah

August 8 • Joe and Lori Cagnoli in honor of Claudia Cagnoli's Bat Mitzvah

August 22 • Brian and Jennifer Levine in honor of Jordyn Levine's Bat Mitzvah

August 29 • Michael and Rhonda Seidman in honor of Jenna Seidman's Bat Mitzvah



Memorials and Contributions

Rabbi Marx's Discretionary Fund

Donation by

Graham & Rebecca Kilshaw
Lana & Robert Weinstein
Lisa Brown
Noah & Heather Fischer
Norm & Betsy Berlin
Robert & Nina Sternberg &
Family
Sean Kozlowski & Melissa
Sherman
Stan & Hildy Richelson

In Memory of

AUDREE SINGER
Abby Gilbert
Andi Becker-Arnold &
Joseph Arnold
Andrew & Dara Brecher
Arlene & Stewart Liebman
Arlene & Walter Kirszbrown
Art & Andy Cohn
Barry & Marlene Green
Bernie & Beth Johl
Beverly & Larry Samson
Bryna & Fred Berman
Carole Chasen
Celia Nires Rothkopf
Cliff & Sherrie Ehrlich
David Gerstman
David Goldstein
David Thomas & Nancy
Lanard
Deborah & Dan Bronstein
Dina & Morris Levin
Elaine & Steve Kelbick
Ellen Werther
Faye & Eric Benshetler
Gay Salin
Harriet & Jerry Silberman
Helena Baron
Ira & Sondra Berman
Jay & Sue Freedman
Jean & Eli Aghen
Jeff & Susan Schwedock
Jody & David Pascal
John & Barbara Murtha
Judy & Phil Pfeffer
Karen Silverberg
Laurie & Craig Porter
Lila & Harry Schultz
Linda Lee Montz
Lisa & Barry Cohen
Liz & Bob Hirsch
Lloyd & Ellen Perlmutter
Lynne Garbose

Margie Chachkin
Mark & Lynn Samson &
Family
Marlene & Gary Dukart
Marv & Debbie Schwartz
Michael Snyder
Mindi Vogel and Audrey
Appel
Myer Bernstein, Marsha &
Steve Milakofsky & Family
Nora & Armand Saragovi
Norman & Stephanie Lubin
Peter & JoAnn Friedman
Renee & Herb Cohen
Rob & Nancy Katof
Robert & Heidi Garnick
Robert & Nina Sternberg &
Family
Rosie & Jack Elias
Sandy & Larry Frankel
Sharon & Richard Kollender
Sheila & Bill Ritchey
Stephen Gershenson
Sue & Mark Rabinowitz and
Family
Sunshine Fund at the Early
Childhood Center at Beth Or
Susan Chachkin Silverstein
Sussie & Al Harris
Sylvia Chachkin
The Landau Family
Tod & Andi Drucker
Zane & Jane Kurtz
ARNOLD SNYDER
DORA WIRTSHAFTER
Andrew & Dara Brecher
Roni & Jamison Jaffe
Scott & Tracey Slobotkin
MICHAEL JOHL
Bernie & Beth Johl
JOSEPH SCHWARTZ
Bernie & Beth Johl
David & Martha Greene
Ellen & Roger Vacco
Fred & Harriette Dorkin
Jean & Eli Aghen
Ted & Barbara Cohen
Itzkowitz
HERBERT PORTNEY
Bob & Sara Goldberg
MOTHER OF ALENE DORDICK
Bruce & Linda Baron
MELITA GROSSMAN
Carole Chasen
JULIAN WEINSTEIN
Celia Nires Rothkopf
Dina & Morris Levin
Sandy & Larry Frankel

NITA GOLDSTEIN
David Goldstein & Bonnie
Libby
JANE H. KOHN
David M & Manny J. Kohn
MARILYN COHN
Bryna & Fred Berman and
Family
Dayna Finkelstein
JULES LEONARD SEIDMAN
Dr. Larry & Bonnie Seidman
EDWARD APPELBAUM
Elaine & Steve Kelbick
NORMAN S. FELDMAN
Ellen Perlmutter
SYLVIA COHEN
Helene & Gary Fisher
VICKI SKLAR
Jack & Rosie Elias
MORRIS STERN
Jack & Rosie Elias
ELAINE GERBER
Linda Baron
DAVID MOSES
Robert & Heidi Garnick
MADLYN ABRAMSON
Bryna & Fred Berman and
Family
Robert & Heidi Garnick
Scott & Rosemary Melnick
RITA SUTOW
Samuel & Cindy Goldstein
LEONARD B. LEVITHAN
Scott Levithan
STEPHEN H. MILLER
The Garnick Family

In Honor of

ROBERT SILVERSTEIN
Candice Chachkin
ERICA'S SELSLEY's Graduation
The Selsley Family

In Appreciation of

RABBI MARX
Ken & Robin Einhorn
Dean Malissa
Phyllis & Gary Finkelstein
Phil Gerson & Family
BETH OR CLERGY & STAFF
Tom Miller & Lynn Levy
PROFESSIONAL STAFF
Allen Male
Bette Male
BETH OR EMPLOYEES &
VIRTUAL PROGRAMS
Carole Chasen
Michael & Barbara Perilstein

Rabbi Bonder's Discretionary Fund

Donation by

David & Eileen Eskin
In Memory of
MARSHALL FREEDMAN
Jay & Susan Freedman
CHESTER CASPER
Lynne Casper
ALVIN KRANTZ
Maurice Feldman &
Marleen Kessler
CURTIS STAATS
Robin Staats
BOBBIE & ROY GOMER
Schurr Family

In Honor of

SHARON BONDER's
Bat Mitzvah
Lorraine Natkin

Mazel Tov to

BERRY FAMILY Wedding
Maurice Feldman &
Marleen Kessler
MICHAEL & MINDY BERLIN
Norm & Betsy Berlin

In Appreciation of

RABBI BONDER
Dean Malissa
The Klondar Family
William Judd
Phil Gerson and Family
Norm & Betsy Berlin

Cantor Green's Discretionary Fund

In Memory of

STEVEN LUBINSKI
DAVID PORTNEY
Bob & Sara Goldberg
HERBERT PORTNEY
Bobbi and Ed Schiff
JOSEPH SCHWARTZ
Ilene Schneller, Norman
Cohen & Dana Marion
MARSHALL FREEDMAN
Jay & Susan Freedman
BETTY LUBLIN
Lewis & Sue Fleishman
CHARLES SCHWARZ
Susan Bellos
ROBERT WALLACH
Todd & Lisa Wallach
ARNOLD SNYDER
Paul & Lisa, Jenna & Brooke
Rovner

In Appreciation of

CANTOR GREEN
Phil Gerson & Family

Memorials and Contributions

Allen Apter Memorial Life Long Learning Endowment Fund

In Memory of

AUDREE SINGER

Andrea & Howard Goldstein
& Family
Shonnie Lebovitz & Max
Taytelbaum

In Appreciation of

AARON NIELSENSHULTZ

Adam & Margot Bram

Andrew Jarrett Fund for Religious School

In Memory of

NORMA JARRETT

Donna & Larry Kane

Annual Appeal 2019-20

Donation by

Graham & Rebecca Kilshaw

In Memory of

MARSHALL FREEDMAN

Jay & Susan Freedman

Barbara Goldberg Nursery School Fund

Donation by

Aaron & Emily Marks
Anthony & Jillian Hillman
Benn & Marsha Prybutok
Dan & Sloane O'Dea
Doug Weiss & Alexandra
Kane
Dennis & Jennifer McCann

In Memory of

AUDREE SINGER

Sherry Spector
The Diamond Family

In Honor of

AVA JANE LAMB

Cliessa Nagle
The Birth of BRAYLEN KAI
MILAKOFSKY
The Landau Family

Mazel Tov to

ILENE SCHNELLER & DANA
MARION on the birth of
WILLOW PAUL
Ellen Mirbach

In Appreciation of

THE TEACHERS AND STAFF
AT CECE

Benjamin Wachtel & Hallie
Anderson
Josh, Reshma, Alivia, Suri
Stone
The Gibson Family
CECE TEACHERS
Eric & Rachael Carp
Alex & Lynn Simon
Thomas & Elissa Boyd
Noah & Heather Fischer
The Doroshov Family
Timothy and Marissa Lieb
Tyler & Stephanie Ice

Berman Family Caring Community Endowment

In Memory of

JACK BASS

Helene & Gary Fisher
NAOMI SUSSMAN
Marc Meketon

Caring Congregants Fund

Donation by

Mitch & Isa Welsch
Ralph & Felice Kahn
The Gass Family

In Memory of

RAPHAEL BECKER

ERIC VOGEL

Andi Becker-Arnold & Joe
Arnold

MADLYN ABRAMSON

Angelo & Heidi Devita
Jennie Nerenberg & Bruce
Dorsey

AUDREE SINGER

Arnolds Office Furniture
Ellen Mirbach
Garry & Bobbi Adair
Hal & Pearl Tragash
Jennie Nerenberg & Bruce
Dorsey

Judy & Jon Beck

Lana & Robert Weinstein
Michael & Michelle Boas
Neen Davis
Sharon Carlin & Sara Baum
EDWARD APPELBAUM
Cliff & Sherrie Ehrlich
Richard & Karen Leavitt

AUDREE & BUNCY SINGER

Denise Caldwell
JOE SCHWARTZ
VICKI SKLAR
PEARL FINE
Ellen Werther
EDWARD SCHWARTZ,
brother of Marvin Schwartz
Elyse & Marc Satalof
DAVID TRAGASH
Hal & Pearl Tragash

STEVE RAVITZ

Herb & Renee Cohen

MAURICE GERBER

John & Melissa Germer

BARI WOLFSON'S FATHER

Mitchell & Amy Abrams

JOSEPH SCHWARTZ

Neen Davis

Renee & Herb Cohen

DAVID PORTNEY

Schurr Family

SEYMOUR KLIPPER

The Cooper Family

In Honor of

Birth of BRAYLEN

MILAKOFSKY

Ellen Werther

In Appreciation of

SUZANNE DIAMOND

Jennie Nerenberg & Bruce

Dorsey

AMY ABRAMS

AARON NIELSENSHULTZ

CANTOR MURLEY

Philip Gerson & Family

Disaster Relief Fund

In Memory of

AUDREE SINGER

Betsy & Lewis Sternthal

PEARL FINE

MADLYN ABRAMSON

Margie Chachkin

Emily Cara Garbose Resource Fund

In Memory of

SUZANNE ROBERTS

JOE SCHWARTZ

MADLYN ABRAMSON

AUDREE SINGER

Lisa Brown

General Fund

In Memory of

MADLYN ABRAMSON

Beth & Jerrold Frezel

AUDREE SINGER

Bob Simon

Jackie, Jerry, Dayna and
Howard Finkelstein
Jim & Ellen Tannenbaum
Joann Simon

Phyllis Pearlmuter

Rob & Theresa Knee

Susan & Jeffrey Bellos

SEYMOUR KLIPPER

Bob Simon

JOSEPH SCHWARTZ

Joann Simon

Margie Levi

Phyllis Halpern

Shelly Feinman

In Honor of

CLAUDIA LESLIE's

Bat Mitzvah

Bruce & Robin Markovitz

Speedy Recovery to

JACK DORF

Joann Simon

Goldsteins' Rosenberg's Raphael-Sacks BOR Endowment

In Memory of

JULIAN WEINSTEIN

Betsy & Lewis Sternthal

Hannah Miller Youth Library Fund

In Memory of

HANNAH ELAINE LEVY
MILLER

Tom Miller & Lynn Levy

Interfaith Apartment Fund

Donation by

Marv & Debbie Schwartz

In Memory of

EDWARD SCHWARTZ

Barbara & John Murtha
Beth Or Sisterhood
Bill Jacobson & Georgia
Cottrell

Bob & Liz Hirsch

Carole Chasen

Dave End & Nancy

Shaffer-End

Ellen Mirbach

Ellen Werther

Elliot & Avis Titcher
 Faye & Eric Benshetler
 Harry & Lila Schultz
 Ira & Robin Secouler
 Jack & Rosie Elias
 Jonathan & Judy Beck
 Marcia Griffin
 Margie Chachkin
 Matt & Holly Green
 Nora and Armand Saragovi
 Stephen Gershenson
 Sussie & Al Harris
 Sylvia Chachkin
 Steven Lubinski
 Ellen Mirbach

Israel Emergency Fund

In Memory of

AUDREE SINGER
 Caren & David Gutman
 MADLYN ABRAMSON
 Donald Gray

Jenna Demar Educational Fund

In Memory of

DAVID PORTNEY
 HERBIE PORTNEY
 Alice & Sammy Heller

Kate Svitek Memorial Garden Fund

In Memory of

AUDREE SINGER
 Andrea and Bob Sklenar
 Frank & Ellen Svitek
 Kathie Sachs
 ELAINE GARBER
 Neal & Sharon Pearlstine

Linda Gerson Memorial Fund for Grounds' Beautification

In Memory of

ROSE WEINTRAUB
 Jodi Gerson
 SHARON HOROWITZ
 Paul & Dale Snyderman
 ANTOINETTE DANO
 Robert Gerson
 Philip Gerson
 BOBBIE & ROY GOMER
 Philip Gerson
 AUDREE SINGER
 Philip Gerson Family

Lore Heinsheimer Memorial Youth Assistance Fund

In Honor of

JILLIAN PESKIN
 Philip Gerson

Meals That Matter Fund

Donation by

Patricia Beckman

In Memory of

EDWARD SCHWARTZ
 Alan & Joan Kober
 MADLYN ABRAMSON
 Angelo & Heidi Devita
 MIRIAM DARLING
 Jonathan & Judy Beck
 AUDREE SINGER
 Ken & Robin Einhorn
 Sandy Roberts
 The Ross Family

In Honor of

Birth of WILLOW PAUL
 Sally & Mark Hurwitz

Music Fund

In Memory of

VICKI SKLAR
 Cheryl & Neil Schlackman
 JOAN BENCAN
 ANITA SHMUKLERE
 Ellen Werther
 BETTY THELMA LUBLIN
 Michael Pollock & Joann Lublin

In Appreciation of

CANTOR GREEN &
 CANTOR MURLEY
 Jon & Judy Beck

Natan Luehrmann-Cowen Jr. Choir Endowment Fund

In Memory of

HERBERT PORTNEY
 Sherry Spector

Reuben R. Wolfert Memorial Fund for Scholastic Excellence

In Memory of

GERALD (JERRY) LEANESS
 Marian Wolfert & Family

Sisterhood Mitzvah Fund

In Memory of

STEVEN LUBINSKI
 Faye and Eric Benshetler
 Beth Or Sisterhood
 RUTH PROLMAN
 JAY SIMPSON
 RHODA CHERNOW
 Faye and Eric Benshetler
 MAE NORTON
 Anne Markowitz
 Arlene Slobodzian
 JOE SCHWARTZ
 Ellen Mirbach
 Arlene Slobodzian
 AUDREE SINGER
 Beth Or Sisterhood
 JULIAN WEINSTEIN
 Abby Gilbert

Yahrzeit Fund

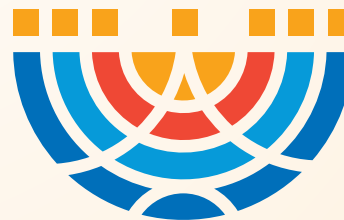
Donation by

Armand & Nora Saragovi

In Memory of

SOLOMON COHEN
 Allan Cohen & Susan Utain Cohen
 JACOB OLITSKY
 Allan Olitsky
 EDWARD APPELBAUM
 Armand & Nora Saragovi
 LUCILLE GLICKMAN
 SUZANNE ROBERTS
 Bruce & Robin Markovitz
 TZILLA BAGINSKY
 JOSEPH BAGINSKY
 MORRIS NIREs
 Celia Nires Rothkopf

BETTYANNE GRAY
 Donald Gray
 SANFORD M. GOODMAN
 Ina Goodman
 Jim & Judy Trias and Family
 SOLOMON BERMAN
 Ira & Sondra Berman
 HARRY LIPOFF
 Irv & Susan Lipoff
 FANNIE ZAVODNICK
 SANDY SALTZ GREISIGER
 Jackie Finkelstein
 SONIA GARBER
 Jay & Joan Beste
 MARILYN ORTNER
 CAROL BETTY ASCH
 Jeff & Susan Asch
 BERNHARD URY
 Jim & Ellen Tannenbaum
 HERMAN BERSTEIN
 Joseph & Marcia Berstein
 BUDDY TEPPER
 ED SCHWARTZ
 Linda Rosenfeld
 BERNICE BERMAN
 Marc & Sandra Bernstein
 BEN SKLAROFF
 Marv & Debbie Schwartz
 ROBERT A. EDELMAN
 Mitch & Lynn Edelman
 LIL FREED
 SARAH BORINE
 BERNARD BORINE
 ANNA GLICKMAN
 Myrle Borine
 JOSEPH SCHWARTZ
 Nora and Armand Saragovi



Your support of our advertisers is greatly appreciated.



*For More Than 5 Generations,
Our Family is Here for Yours.*

Goldsteins' Rosenberg's Raphael-Sacks INC.

Providing funeral counseling and pre-need arrangements.

215-927-5800

1-800-622-6410

www.GoldsteinsFuneral.com

For hearing impaired:
267-331-4243 (Sorenson VP)



PHILADELPHIA CHAPEL

Carl Goldstein, Supervisor
6410 N. Broad Street
Philadelphia, PA 19126

SUBURBAN NORTH CHAPEL

Bruce Goldstein, Supervisor
310 2nd Street Pike
Southampton, PA 18966

ROTH-GOLDSTEINS' MEMORIAL CHAPEL

Jason S. Goldstein • Mgr. Lic. No. 4633
Pacific & New Hampshire Avenues
Atlantic City, NJ 08401
Southern New Jersey Chapels Available



Caring. Committed. Compassionate.



THE COST OF LIVING KEEPS GOING UP.
*The cost of your final resting place
doesn't have to.*

WHY PRE-PLAN YOUR CEMETERY ARRANGEMENTS? Like many things, costs will continue to increase, so locking in now is a wise decision. Yes, perhaps it's a long way away, but all the more reason to get your plan together now. Contact your local Dignity Memorial® provider for the best prices.

> Flexible payment plans > Gain true peace of mind > Choose a plan that fits your budget

Dignity®
MEMORIAL

∞ LIFE WELL CELEBRATED® ∞

ROOSEVELT
MEMORIAL PARK
TREVOSE

RooseveltMemorialPark.com
215-673-7500
Leah Feldman, General Manager

**FOREST HILLS /
SHALOM**
MEMORIAL PARK

HUNTINGDON VALLEY
ForestHillsShalom.com
215-673-5800
Samuel Domskey, General Manager

WHITEMARSH
MEMORIAL PARK
AMBLER

WhitemarshMemorialPark.com
215-646-7500
Lauren Scudieri, General Manager

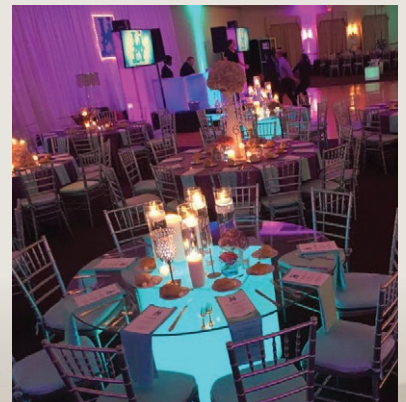
Simchas Made Special at Beth Or!

Planning a celebration? Let us host your party and help make memories that will last a lifetime!

From an intimate Shabbat dinner to a large formal party, our beautiful facility is the perfect place to host the event of your dreams, completely customized to your needs.

Learn more about our banquet facilities.

Please call 215-646-5806 or contact Amy Abrams, aabrams@bethor.org.



Congregation Beth Or | 239 Welsh Road, Maple Glen, PA 19002 | www.bethor.org

Shopping On Line? You Shop. **Amazon Gives to Beth Or.**

Visit **smile.amazon.com** and search for **Congregation Beth Or**
to designate as your charitable organization.

Once you sign up for our unique link, 0.5% of the price for all eligible purchases
benefits our community.

Be sure to bookmark **smile.amazon.com** on your computer and use it each time you shop!
Only purchases made at **smile.amazon.com** are eligible for donation.



Stay Connected!



Join our  Facebook page at www.facebook.com/CongBethOr
or Instagram  [@CongregationBethOr](https://www.instagram.com/CongregationBethOr)

Like, comment and share our posts!

Sign up for our weekly Chai-Lights and Community Matters
e-mail blasts on the Beth Or website homepage, www.bethor.org.



CAMP GREEN LANE

Located in Green Lane, PA

Experts in creating memories and friendships that last a lifetime — since 1926.

Exciting special events and out-of-camp trips!



Become a part of our Camp Green Lane family!

215-234-9211

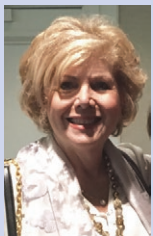
info@greenlane.com • www.greenlane.com

Melissa and Jay Freedman and Rene and Adam Weiner

Owners/Directors



Roosevelt Memorial Park



Pre-Planning Is Easy
Your Children Will Love You For It!
10% Preneed Savings

Contact Doreen Berest
(215) 219-9293
Doreen.Berest@DignityMemorial.com

*Beth Or Member
& Sisterhood
Board Member*

TIMONEY KNOX, LLP
Attorneys at Law

Karen Schecter Dayno, Esquire, LL.M.

Fort Washington, PA

Wills • Trusts • Estates • Guardianships

215-646-6000

*Serving the legal needs
of the Community since 1921*

kdayno@timoneyknox.com

www.timoneyknox.com



YEARS

Fun • Friendship • Forever

www.elbowlane.com

215-343-2120

Your support of our advertisers is greatly appreciated.

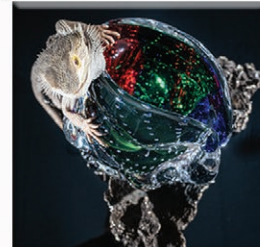


*A great portrait
experience for the
entire family.*

*Dara N King
Member of
Congregation Beth Or*

CERTIFIED
PROFESSIONAL PHOTOGRAPHER

In Studio or On Location ... By Appointment Only.
** Mention this ad for 30 minute bonus on your session or collection
expiration 8/2020 (base value \$125)*



★ **SESAME DAY CAMP**

★ **CAMP ROCKWOOD**

★ **ROCKWOOD ADVENTURES TEEN TRAVEL**

- Day Camp: 4 to 8 Week Sessions
- Mini-Day Option (3, 4, & 5 year olds)
- American Red Cross Swim Program
- Arts & Outdoor Adventure Activities

- Extensive Sports Program
- Great Lunches & Snacks & Much More!
- Teen Travel Program: 1 to 7 Week Options for 6th through 10th Grades
- Door-to-Door Transportation

*Offering Your Child the Finest in Caring Staff,
Diverse Programming & Outstanding Facilities.*

Howard & Dale Batterman,
Owners/Directors

610.275.CAMP

www.srdaycamps.com



ORTHODONTICS
Excellence. Integrity. Personal Care.

WWW.ORTHODONTIST4U.COM
ORTHODONTIST4U@GMAIL.COM

Dr. Calvin Lee and Dr. Samuel Meyrowitz



Doylestown

363 N Main St
Doylestown, PA 18901
Phone: (215) 348-5301
Fax: (215) 348-5307

Glenside

818 N Easton Rd
Glenside, PA 19038
Phone: (215) 885-6020
Fax: (215) 885-0665

Perkasie

1000 E Walnut St #204
Perkasie, PA 18944
Phone: (215) 257-5330
Fax: (215) 257-5332



**Rhonda & Larry Rosenthal
& The Rosenthal Group**

Experience Makes the Difference



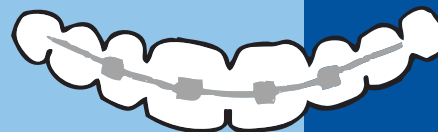
Fox Roach Realtors
721 Skippack Pike, Suite 1
Blue Bell, PA 19422
215-432-5610
RhondaLRosenthal@gmail.com
RhondaRosenthal.com



**BERKSHIRE
HATHAWAY**
HomeServices

**Great smiles
begin with...**

Dr. Jamie Goodreau
Specialist in Orthodontics



- * Certified Invisalign Orthodontist
- * Treatment of Children & Adults
- * TMJ Treatment

Call today for a
FREE Consultation!
(215) 997-0200

Affordable
Payment
Plans

LOCATION:
HighPoint
Business Campus
1300 Horizon Dr.
Suite 117
Chalfont, PA 18914

www.drgoodreau.com

CAMP AMERICA DAY CAMP



"Creating life-long friendships since summer 1967"

www.camp-america.com

215-822-6313



Gary E. Risler

Sales Manager
NMLS #490654
FIRST PRIORITY MORTGAGE
720 Fayette Street
Conshohocken PA, 19428
215.669.0944
GaryRisler.com



LK Party Designs

Custom decorations for all Occasions

Reasonable prices
Eleven years of experience
Centerpieces, place cards, logo design, party favors, etc.

Contact us for an appointment to see our samples:

Lori Motis at (215) 628-9594 or lorimotis@aol.com
or Kim Kaffey at (215) 654-5178 or ksk67@verizon.net

Let us help design the party of your dreams!



GAIL GOLDMAN

Vacation Sales Consultant

Beth Or member for over 30 years

ROSENBLUTH
Vacations

600 W. Germantown Pike, Suite 221, Plymouth Meeting, PA 19462
Office: 610-825-9010 • Home: 215-646-8169
E-mail: gailnalan@aol.com



Opening late 2020 Joseph Levine & Sons Blue Bell, PA

By fulfilling a promise to the Montgomery County community, our newest facility conveniently located in the heart of Blue Bell, PA, will feature modern Memorial Chapels on just under 5 acres of land.

During the construction phase, any family making advance funeral planning for the use of this facility, will be provided a credit towards chapel services (Blue Bell location only). A funeral director from our staff can meet with you in the comfort of your home or any of our offices. If pre-arrangements already exist with other establishments, you may be able to transfer them to our firm. Since 1883, a Levine family member or one of our funeral directors are always available to answer any of your questions or concerns.

JOSEPH *Levine* & SONS

SERVICE • TRADITION • DIGNITY
www.levinefuneral.com

With both a large and small chapel the funeral home will feature:

- Flexible event space with separate reception room for catered family gatherings
- State-of-the art audio and video equipment
- Funeral service webcasting availability
- Parking for almost 200 vehicles
- Private arrangement offices and family rooms
- Minutes away from the PA Turnpike, Route 476 (Blue Route) and Route 202

Joseph Levine & Sons, Inc.

Jonathon D. Levine, Supervisor
4737 Street Road
Trevoose, PA 19053
(215) 942-4700

Joseph Levine & Sons, Inc.

Brian M. Levine, Supervisor
2811 West Chester Pike
Broomall, PA 19008
(610) 325-2000

Haym Salomon Memorial Park

Adam D. Levine
A Levine Family Company
200 Moores Road
Frazer, Pa 19355
610.644.1100



LIVE YOUR BEST LIFE

Experience the Barbara Brodsky Suites at Lankenau Medical Center

You value knowledge. You value exceptional medical care. You value privacy.

When you need to be in the hospital, you can find exceptional medical care in an elegant healing environment at Lankenau Medical Center, part of Main Line Health. During your stay in the artfully appointed Barbara Brodsky Suites, you will have a personal concierge to see to your needs, deluxe amenities to make your stay more comfortable, chef-prepared gourmet meals, and private living and dining areas for you and your loved ones. It's these extras that create an incomparable experience.



To see a virtual tour of the Barbara Brodsky Suites, visit mainlinehealth.org/brodsky. To check availability, call 484.476.6180 or email BrodskySuites@mlhs.org.

Beth Or Spotlight

July/August 2020 | Volume 64, Issue 6 | Tammuz-Av-Elul

239 Welsh Road, Maple Glen, PA 19002

Phone: 215-646-5806 | Fax: 215-646-0173 | Website: www.bethor.org

Senior Rabbi Gregory S. Marx
Associate Rabbi Jason Bonder
Cantor David Green
Adjunct Cantor/Jr. Choir Director Jaime Murley
Executive Director Amy S. Abrams
Director of Religious School Aaron Nielsenshultz
Early Childhood Director Sara Baum
Asst. Early Childhood Director Sharon Carlin
Director of Accounting Suzanne Diamond
Director of Marketing & Communications Judy Trias
Director of Member/Youth Engagement Jillian Peskin
Executive Director Emerita Elizabeth L. Hirsch, F.T.A.

President Josh Gottlieb
Vice President Gwen Silverstein
Vice President Leslie Weiss
Vice President Jeffrey Green
Treasurer E. Matthew Steinberg
Assistant Treasurer Evan Segal
Parliamentarian Don Berry
Secretary Joshua Stein
Brotherhood President Allan Posner
Sisterhood President Lois Lambersky
Beth Or Spotlight Editors Ellen Werther/Judy Trias



Camp Chaverim

CONGREGATION BETH OR

Friendships Start Here

Welcome Campers!

Champ Chaverim Summer 2020 is in Session starting July 6!

We are following all CDC guidelines to keep
our campers and staff safe!

