



# Beth Or Spotlight

January-February 2022 | Volume 66, Issue 3 | Tevet-Sh'vat-Adar 1





## January Worship Schedule

*\*All Services take place in the Gitlin Sanctuary unless otherwise noted. For services that include a remote viewing option, save these links to your computer for quick access: Beth Or Livestream - <https://bethor.livecontrol.tv/> and Beth Or Facebook Live: [www.facebook.com/CongBethOr](https://www.facebook.com/CongBethOr).*

### Saturday, January 1

9:30 am Torah Study  
11:00 am Shabbat Worship in Chapel

### Friday, January 7 Shabbat Bo

6:30 pm Family Shabbat Worship •  
*Livestream*  
7:30 pm Kabbalat Shabbat •  
*Facebook & Livestream*

### Saturday, January 8

9:30 am Torah Study  
11:00 am Shabbat Worship

### Friday, January 14 Shabbat Beshalah

7:30 pm Music Shabbat Worship •  
*Facebook & Livestream*

### Saturday, January 15

9:00 am Shabbat Worship with the  
Bar Mitzvah of Matthew Wagner,  
son of Robert and Amy Wagner  
9:30 am Torah Study  
11:00 am Shabbat Worship with the  
B'nai Mitzvah of Jordan and Liam  
Perlmutter, sons of Frank and Susan  
Perlmutter • *Livestream*

### Friday, January 21 Shabbat Yitro

7:30 pm Shabbat Worship Honoring  
Brotherhood • *Facebook Live &  
Livestream*

### Saturday, January 22

9:30 am Torah Study  
11:00 am Shabbat Worship with the  
Bar Mitzvah of Fisher Adams, son of  
Travis and Cindy Adams • *Livestream*

### Friday, January 28 Shabbat Mishpatim

7:30 pm Shabbat Worship • *Facebook  
Live & Livestream*

### Saturday, January 29

9:30 am Torah Study  
11:00 am Shabbat Worship

## February Worship Schedule

### Friday, February 4 Shabbat Terumah

6:30 pm 6th Grade Family Shabbat  
Worship • *Livestream*  
7:30 pm Kabbalat Shabbat Worship •  
*Facebook Live & Livestream*

### Saturday, February 5

9:30 am Torah Study  
11:00 am Shabbat Worship

### Friday, February 11 Shabbat Tetzaveh

7:30 pm Shabbat Worship with the  
Re-Consecration of Our Home •  
*Facebook Live & Livestream*

### Saturday, February 12

9:30 am Torah Study  
11:00 am Shabbat Worship with  
the Bar Mitzvah of Gavin Litten,  
son of Michael and Dorie Litten •  
*Livestream*

### Friday, February 18 Shabbat Ki-Tissa

7:30 pm Shabbat Worship • *Facebook  
Live & Livestream*

### Saturday, February 19

9:30 am Torah Study  
Anytime Heart & Soul Shabbat •  
*Podcast*  
11:00 am Shabbat Worship

### Friday, February 25 Shabbat Vayakhel/Shekalim

7:30 pm Shabbat Worship • *Facebook  
Live & Livestream*

### Saturday, February 26

9:30 am Torah Study  
11:00 am Shabbat Worship with the  
Bar Mitzvah of Charlie Jay Zislis, son  
of Lori Frankel and Ben Zislis in the  
Haines Chapel



## Table of Contents

From the Rabbi's Desk Rabbi Gregory S. Marx.....	1
President's Corner/ Gwen Silverstein.....	2
Candle Lighting Times.....	2
From the Rabbi's Desk/ Rabbi Jason Bonder .....	3
From Cantor David Green .....	4
Development Update .....	5
Member Engagement: C4C Launch.....	6
Beth Or Cares: Mental Health Awareness .....	7
Religious School News & Important Dates.....	8
Early Childhood Education.....	9
Youth Engagement .....	10
Junior Choir.....	11
B'nai Mitzvah Projects.....	12
Get Connected Business & Career Network.....	13
IHN Program Volunteers Needed.....	14
Social Action.....	14
Social Justice .....	15
Brotherhood .....	16
Sisterhood.....	17
Events.....	18 & 19
Celebrate Your Simcha .....	20 & 21
Chai Lights/ Flower Donations .....	22
Memorials & Contributions .....	23-26

# In Thanks for Cantor David Green and his Leadership

*Rabbi Gregory S. Marx, Senior Rabbi*

As I'm sure many of you have heard, Cantor David Green will retire from his position as Cantor on June 30. He is so excited for this next stage of his life, and we are grateful for his many years of service. His voice, his charm and his empathy have left an unforgettable imprint on the heart and soul of our congregation. I personally am grateful to have been able to call him my partner for all these many years.

In Deuteronomy 34:5, we learn that Moses is given a new title for the first time. Through most of Exodus, Moses is called the "lawgiver," for his devotion to Torah



*Rabbi Gregory S. Marx*

## From the Rabbi's Desk

and bringing it to the people at Mount Sinai. Yet in Deuteronomy, he is identified as "the servant of God." This is, in my opinion, his highest title. No less than eighteen times he receives this title. Elsewhere Moses is identified for his humility. Moses Maimonides wrote, "There is none greater than Moses, our teacher. He should bear the nation's difficulties, burdens, complaints and anger as a nurse carries an infant with humility." The soul of the leader is of equal measure to their vision.

David is beloved for his faith, his devotion to the welfare of others, and his humility. He has served his community with little regard for himself, but rather thinking what is best for our members and their children. I will always be grateful to him for that. Like Moses, he believed in the people.

Rabbi Jonathan Sacks z"l writes that Judaism places the people and their needs above the leader. Unlike in the secular world, where the Kings and Queens had all the power, we elevated the people. "The ancient kings had power and from that came the ability to coerce. The Prophets, on the other hand, had influence but no power at all. Power lifts the leader above the people. Influence lifts the people above their former selves. Influence respects people; power controls people. Judaism, which has the highest view of human dignity of any major religion, is therefore deeply skeptical about power and deeply serious about influence. Hence one of Judaism's greatest insights into leadership: the highest form of leadership is teaching. Power begets followers. Teaching creates leaders."

**Thank you, David, for caring for all of us these years, and teaching so many.** Your work will have a lasting influence on all. **Thank you Cantor Green for leading our community and humbly being a servant of God.** His voice and his wisdom have inspired countless generations. He has touched the hearts of those in our school studying for bar and bat mitzvah, people in mourning, and of course those rejoicing under the wedding canopy.

I hope that you will join me and the leadership of Beth Or in recognizing Cantor Green for his service, wishing him well, and thanking him for his years of devotion to our sacred community and heritage. We have designated the weekend of May 13 for a series of celebrations. Gather with us at Shabbat evening services at 7:30 for a tribute service. Then, on Saturday night, May 14, join us for an evening of music and celebration. On Sunday, our young families can express their affection and gratitude during a religious school activity.

On a personal note I am grateful to having been able to partner with Cantor Green for all these years. He is our humble, beloved leader and a servant of God.



Gwen Silverstein

# Cantor Green “You Shall Be A Blessing”

Gwen Silverstein, Beth Or President

As you may be aware our beloved Cantor David Green is retiring on June 30, 2022, after serving our congregation for 25+ years. Cantor’s deep connection to Jewish spirituality and his charismatic leadership skills have been a gift to our congregation. He has touched so many of us, so personally, with his musical talents and unconditional pastoral support.

Jeff Green, 2nd VP is leading the search committee with the support of the Rabbis and myself. Recruiting/searching for clergy is akin to how firms or corporations recruit. The fundamental difference is that we are lucky enough to include congregants in the search activity. I want to take this opportunity to thank the search committee members who have given their time and input into this extremely important process. **Here are the names of the committee members:**

Carole Chasen	Cliff Ehrlich	Jacqueline Germer	Jeff Gould
Stephanie Ice	Rachael Rosenfeld	Jennifer Seboek	Lynn Simon
	Joshua Stein	Ellen Werther	

We will continue to share how things are progressing with our Cantor search.

Lastly, please mark your calendars: May 13-15 will be a “Green Weekend” as we will celebrate Cantor Green. Plenty more details to follow and participate!

As Cantor Green sings to us *L’chi lach!* Go forth!

A close-up photograph of two lit yellow candles against a dark background. The flames are bright and steady, casting a warm glow.

## January/February Candle Lighting

Friday, January 7 • 4:34 pm	Friday, February 4 • 5:05 pm
Friday, January 14 • 4:41 pm	Friday, February 11 • 5:14 pm
Friday, January 21 • 4:49 pm	Friday, February 18 • 5:22 pm
Friday, January 28 • 4:57 pm	Friday, February 25 • 5:30 pm





Rabbi Jason Bonder

## From the Rabbi's Desk

**Our goal is to continue mining our ancient texts for wisdom that can continue to enrich our lives.**

# Layers of Meaning

*Rabbi Jason Bonder, Associate Rabbi*

Each Shabbat, during the months of January and February, the Torah portions come from the book of Exodus. It says in the very first chapter of the book, "A new king arose over Egypt who did not know Joseph." (Exodus 1:8) How could that be? Joseph was a very important man in Egypt! How could this new Pharaoh have never heard of him?

A 3rd century Rabbi, known by his nickname "Rav," explained that this verse of the Torah is meant to be taken literally. For there was *truly* a new person — a new king of Egypt - that really did not know Joseph. Ah, thank you, Rav. All our problems are solved. Right? *Wrong*.

Rav had a colleague named Shmuel. Shmuel read this verse in an opposing way. He felt it was meant to be read figuratively. He argued that it was the very same Pharaoh who worked closely with Joseph. He just happened to issue new edicts, and the edicts made it seem like he didn't know Joseph.

The 12th century commentator Rabbi Abraham Ibn Ezra finds special meaning in the Hebrew word **וַיָּקָם** *vayakom* meaning "And there arose..." and from the use of this word, Ibn Ezra concludes that this new king was a new person who was not of the royal line of those before him.

So now it's settled, right? *Wrong* again.

The Torah is ambiguous for a reason. Our goal for the study of Exodus 1:8, along with the entirety of Jewish text, is not to settle the debate. It is to keep the debate going. Our goal is to continue mining our ancient texts for wisdom that can continue to enrich our lives. And even the process itself helps us enrich our lives. Through the process of healthy debate and argumentation, we can deepen our connections to our traditions, to our community, and to ourselves.

Enter Rabbi Dr. Leon Wiener Dow. He is a Rabbi of the 20th and 21st centuries living in Jerusalem. He has a deep commitment to Jewish learning, Jewish pluralism, and he is a phenomenal teacher. He created a podcast, now in its second season called "PodDrash." In each episode, he presents a "text" — a podcast of some sort dealing with important issues. Then he and a guest "*drash*" it. They dive in and engage in the style of learning established thousands of years ago in his hometown of Jerusalem as well as in the academies in Babylonia. He and his guests bring in Jewish wisdom to bolster their points about the podcasts they analyze. They are taking the ancient methods of Jewish study and bringing them into the 21st century and beyond. I highly recommend listening to both seasons of the show, and I invite you to join us in my class on Sunday mornings at 11am as we add yet another layer onto the discussions — our Beth Or layer of debate and study. We will listen to the podcast each week and we will hopefully grow closer to our Judaism, our community, and ourselves through the process.

Check out the podcast website here: <https://poddrash.org/>

# "Oldies But Goodies" For Music Shabbat

Cantor David Green



Cantor David Green

Cantor Murley and I, along with the two choirs, usually premiere a new composer's music for Music Shabbat. This year, we will still introduce some new music, but will concentrate on singing our favorite melodies we have performed together for the last ten years. (Due to the Pandemic we will not be able to feature our two wonderful choirs.) Pre-Covid, we would sing a lot of favorite duets every week. Now, Friday, January 14 will be one of the last times we can sing our favorite melodies together. It is actually the perfect Shabbat for this, since it is Shabbat Shira (Sabbath of Song), which takes place on or before *Tu B'Shevat*. It includes *Shirat Hayam*, the song the Israelites sang after they crossed the Red Sea.

The actual name of the *Parsha* for this Shabbat is *Beshalach*, which means "when Pharaoh sent out." This Torah portion begins with "I will sing to the Lord" and ends with "the Lord will reign forever and ever." This is such a dramatic part of the Torah, that a special trope or cantillation is used for chanting. Traditionally it is also sung when chanting the *Michamocha* for this Shabbat Service.

That is why *Shabbat Shira* typically features special music. **Please mark your calendar for Friday, January 14 at 7:30pm. I hope you will attend either in person or virtually to sing with Cantor Murley and me, and savor some of our favorite old tunes, as well a few new ones.**





# How **Giving** Makes an **Impact** on Beth Or

By Jennie Nerenberg, Development Chairperson

All of our members and families are our donors. Everyone contributes financially to the strength and vitality of our community. We are grateful for each and every donation to our funds, our schools, our building, and our community. **Over 500 families gave additional donations to at least one of our funds last year.** Our community is so blessed with the sheer number of families and individuals who donate their charitable dollars to Beth Or. We literally could not create and sustain the vibrant community we have without this generosity. In particular, I want to draw your attention to two recent gifts and the impact they are making on our community.

Last October, we dedicated the **Flitter Family Terrace**. This fantastic outdoor space has held so many terrific events – Sukkah parties, lunches, outdoor parties, B’nai Mitzvah services during COVID restrictions on indoor gathering, our Tashlich service on Rosh Hashanah – but until last October it didn’t bear a donor’s name. Nancy and Cary Flitter and their family, long-time members and supporters, came to us to tell us they wanted to make an impact gift. They decided to take the naming opportunity of that lovely outdoor space, which we now call the Flitter Family Terrace. This gift, along with other contributions and operating reserves, has allowed us to pay off the mortgage on our building six years early. The removal of this debt service allows us to focus more of our resources on enhancing the Jewish lives of our families, strengthening our local community, and better caring for those in need here and around the world.



Jennie Nerenberg

Early last year another generous family wanted to make an impact at Beth Or. We decided together with Arthur and Barbara Pomerantz, parents and in-laws of Lauren and Craig Schulz, to create the **M&M Family and Youth Programming Initiative Fund**, to which the family has made a substantial commitment. It will be used to enhance and support the creation of new mission-aligned initiatives that attract and engage families with young children. You may have already participated in some of the events supported by this fund — Sushi, Sake, Sukkah and our many events celebrating the nights of Chanukah last year. We certainly hope you join us for some upcoming events supported by this fund in celebration of Tu B’Shevat in January and Purim in March.

These are just two of the most recent examples of all the extraordinary generosity that our members and friends have shown to Beth Or for decades. I’m sure you’ve used the phrase, “We belong to Beth Or” when someone asks you about your synagogue. And while that is true, there is a deeper truth in its inverse: **“Beth Or belongs to us.”** It’s our job to take care of it, strengthen it, and pass it forward to the next generation shining even more brightly than it has been since 1955.

If you would like more information on giving opportunities, please contact me at [brucenjen@verizon.net](mailto:brucenjen@verizon.net).

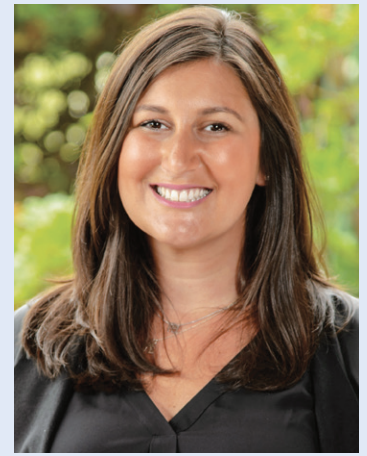


# C4C: Clubs for Community Launching Now!

*Jillian Peskin, Director of Member & Youth Engagement*

It's here! This year's big initiative — **C4C: Clubs for Community** is ready to launch! We have a variety of clubs with leaders who are ready to get started. We hope one or more of these pique your interest:

- Beth Or Reads Book Club
- Spirits Club
- Beth Or Rides Peloton Club
- Pickleball for Beginners
- 55+ Singles Club
- Canasta
- Knitters



*Jillian Peskin*

Check your email in the New Year to see how you can join in on the fun! Do you have an idea for another club that you would like to lead? Let us know and we can help you get it started!

Questions? Contact Jillian Peskin, [jpeskin@bethor.org](mailto:jpeskin@bethor.org) or Lisa Goldoor, [lgoldoor@gmail.com](mailto:lgoldoor@gmail.com).

Looking forward to helping you make more connections in 2022!



**C4C | Clubs 4 Community**

**CONGREGATION BETH OR**

*Building friendships through shared interests*



# Beth Or Cares

Stu Briefer, Beth Or Cares Program Chair

## The Importance of Mental Health Awareness



How are you? A question we ask in passing, never expecting a truthful answer. Do we want to get involved or is the pressure of what we may hear too much for us, so a simple answer “fine” is all we want to hear?

Perkei Avot teaches us not to see only the container but what is inside the container. When you look

at someone, you can see their physical appearance, but you can't see what they are feeling. Feelings of isolation and despair are conditions you cannot see.

### Have you ever asked yourself:

What am I doing here?

What is my life worth; meaning, does my life have a positive impact on others around me?

How can I find the energy to get out of bed each day?"

Odds are good that, in private, you answered yes to one of those questions or think a friend might. You and your friend are not alone. The data shows large parts of our Jewish and broader community population are affected by some mental health issues of their own or a loved one. There is help.

Since 1989, the Commonwealth has conducted a survey (Pennsylvania Youth Survey – PAYS) of school students in the 6th, 8th, 10th and 12th grades to learn about their behavior, attitudes and knowledge concerning alcohol, tobacco, other drugs and violence. They recently added depression, anxiety, and suicide. How do kids identify stress and anxiety? It is staggering how many kids feel sad each day



**A recent study of Jewish households reported having a member who has been diagnosed with a mental health, developmental, or behavioral health condition.**

The most common were a mental health condition such as depression or anxiety (33%) and a learning or developmental disability (17%) such as ADHD, dyslexia, or an Autism spectrum disorder. **Identifying and accepting the diagnosis is the hardest step. Getting treatment is the next hardest step.**

Depression and anxiety do not only affect the person but also affects his/her family and friends. This is where Beth Or is playing a part. Beth Or CARES is here to help.

Everything is kept confidential.

The time to get information is now. We learn how what to do in case of fire, if we are in an accident, or have a broken bone. Learn how to identify the cry for help in ourselves and in our loved ones and learn how to start the hard conversations to get them help.

Abby Grasso, Executive director of NAMI (National Alliance of Mental Illness) was kind enough to share her thoughts with us during a Mental Health Awareness & Resources program at Beth Or this past December. She has graciously offered to come back for another presentation. Abby starts with “Lets chat about wellness and health”. This is not about being “sick” but taking care of yourself, your loved ones and having the resources and tools to accomplish this.

**Take care of yourself first so you can take care of your loved ones. Please reach out to me for more information and sources of help.** — Stu Briefer, [smbriefer@gmail.com](mailto:smbriefer@gmail.com)



Stu Briefer



## Important School Dates

**Sunday, January 2**  
No school - Winter Break

**Monday, January 3**  
No school - Winter Break

**Tuesday, January 4**  
No school - Winter Break

**Sunday, January 16**  
No school - Dr. King Weekend

**Monday, January 17**  
No school - Dr. King Weekend

**Tuesday, January 18**  
No school - Dr. King Weekend

**Sunday, January 30**  
No Rishon (Sunday 11:15 am  
Hebrew School)



**Friday, February 4**  
6th Grade Family Shabbat

**Sunday, February 20**  
No School - Presidents' Weekend

**Monday, February 21**  
No School - Presidents' Weekend

**Tuesday, February 22**  
No School - Presidents' Weekend

**Sunday, February 27**  
No Rishon (Sunday 11:15 am  
Hebrew School)

# Religious School NEWS

## ShalomLearning at Beth Or

*Aaron Nienshultz, Director of Religious School*

Did you know that we've made a big change to our curriculum at Congregation Beth Or? We're using material from *ShalomLearning.com*. This values-based curriculum takes students on a grade-level appropriate exploration of seven Jewish values:

**Teshuvah** (taking responsibility for our actions)

**B'tzelem Elohim** (being made in the image of Gd)

**Gevurah** (using our inner strength)

**Achrayut** (being responsible in the world)

**Hakarat Hatov** (recognizing the good)

**Koach Hadibbur** (using the power of words)

**Shalom** (making peace)

Each value is divided into several units, and teachers use videos, discussion questions, art activities, online games, and other tools to help students grasp the concepts and connect with these Jewish values.

It's been a big step for our faculty to move into a situation where all of our resources are online, and they are doing truly remarkable work. For some of our faculty, being online is a natural step, while for others, they've gone way outside of their comfort zones — and have succeeded in remarkable ways! Feel free to check out *ShalomLearning.com* and let me know what you think.



*Aaron Nienshultz*



Leonard &  
Madlyn Abramson  
Education Center

CONGREGATION BETH OR

# ShalomLearning





# Engaging Senses and Learning through Play

*Sara Baum, Early Childhood Director*

Young children learn best through discovering and exploring the world around them. They use all of their senses to understand and make sense of their world. Children focus deeper on what interests them and you can see this in their play. As they navigate their environment they need lots of support from caring adults to help them develop the habits they need to thrive in school, at home, and beyond. As children play, they are learning and developing different skills. There is a saying that all early educators repeat, "play is the work of a child." Parents of young children often miss the skills being fostered as their child plays.

- **Cognitive skills** – learning math and problem solving in a pretend restaurant
- **Fine motor** – placing and peeling off stickers from a plastic sheet or creating a string of beads
- **Gross motor** – balancing on stepping stones or logs in the backyard
- **Literacy** – words used in pretend play or creating a list of things to do
- **Social Emotional development** – working together to create something in a group



Zipporah S. Abramson  
Center for Early  
Childhood Education

CONGREGATION BETH OR



*Sara Baum*

**Mark your calendars with these important dates coming up in the next few months.**

## **January**

- 1/14 – Closed for all students, Parent/Teacher Conferences
- 1/17 – Tu B'Shevat
- 1/17 – Closed for all students, Martin Luther King Day

## **February**

- 2/21 – Closed for all students, Presidents Day





# Fun Events for Beth Or Kids!



*Rachel Shapiro*

*Rachel Shapiro, Youth Engagement Advisor*

## Youth Programs

We have had some wonderful in-person youth programs in fall 2021! Now get ready for 2022! Be on the lookout for those RSVP links in your Religious School Notes and Chai Lights so you can be sure to reserve your spots as they have been filling up fast!

## JSU Programming

Our Youth Engagement Team has been very active in local high schools. We have had the pleasure of visiting Upper Dublin and CB South's JSU (Jewish Student Union) Programs. We have led a variety of programs, such as creating decorating candy bags for Families Forward in Philadelphia; celebrating the importance of Chanukah by

learning about why we light the chanukiah the way we do (and then lighting it!); creating social connections among teens; playing Jewish-themed games, and so much more. And, of course, we always bring a little something to nosh on! We have been able to enrich student experiences, establish relationships with teens, and create a safe space for students — Jewish or not — to come to appreciate and learn about Judaism. If you would like us to visit your school, reach out to Aaron Nielsenshultz, [aaron@bethor.org](mailto:aaron@bethor.org). We are always looking to expand and establish our relationships with our Beth Or Students and our community.





# It's A Bird, It's A Plane, No... It's A Purim Schpiel



Jaime Murley



*Cantor Jaime Murley,  
Junior Choir Director*

If you haven't heard, there's a new Jewish teen activist named Willow Zimmerman making some major headlines... 16 year old, Willow, could be a congregant at Beth Or! She loves eating all of the Jewish favorites like bagels and rugelach, her mother is a professor of Jewish culture, she has a dog named Lebowitz, and Willow is very interested in the Jewish value of tikkun olam, or repairing the broken world. There's just one thing that differentiates Willow from our typical YOBO teens, namely she has superhero powers and goes by the alias, Whistle, when she's fighting Gotham's most notorious villains. Yes — Willow Zimmerman, aka Whistle, is one of the newest DC superheroes, and recently appeared in her own graphic novel.

Whistle is not the first Jewish person to come out of the superhero genre. In fact, the superhero genre was dominated by Jews and was conceived in the early 1930s by two Cleveland Jewish high school students, writer Jerry Siegel and artist Joe Shuster. Many of the biggest names in superheroes were Jewish but changed their names to more Americanized versions, like Stanley Martin Lieber became Stan Lee; Jacob Kurtzberg became Jack Kirby. Rabbi Simcha, writer of *Up, Up, and Oy Vey: How Jewish History,*

*Culture, and Values Shaped The Comic Book Superhero*, pointed out that while it may not have been a conscious act, "it's no coincidence that many of the creators of superheroes lived double lives; many of them changed names and had one identity at home and another identity at work, representing the desire to assimilate and be accepted."

And then there are the superheroes themselves: Superman's real name Kal-El is Hebrew for "voice of God." Superman's parents sent him to Earth in a tiny rocket ship, reminiscent of how baby Moses' mother sent him down the Nile in a basket to survive Pharaoh's decree to kill all Jewish newborn sons. In the context of the 1930s, the story also reflected the Kindertransports – the evacuation to safety of hundreds of Jewish children from Nazi-occupied Europe to lands of the British Commonwealth. Scarlet Witch and her brother, Wanda Maximoff, are Jewish. Her parents meet in a Holocaust concentration camp, so that history is ingrained in the character. Harley Quinn, the villain turned antihero turned sometimes hero, has notable Jewish origins and a thick Brooklyn accent with the mannerisms to match. Batman has been labeled Jewish since 2006, when it was established that Kate Kane (Batwoman) is Jewish and Bruce's first cousin on his mother's side. In Detective Comics #1033, we see Bruce placing a stone on Alfred Pennyworth's grave, a Jewish mourning tradition.

This is by no means a complete list of Jewish superheroes, but you get the idea. With superheroes playing such a big part in the culture these days (just look at the movies coming out this year), we at Beth Or, thought it would be fitting for SUPERHEROES to be the theme of this year's Purim schpiel! Don't worry! We know that "with great power comes great responsibility," so we will do our best to create a schpiel that will entertain everyone from our youngest congregants to our oldest. If you ever wanted to dress as a superhero and NOT look out of place, Purim 2022, will be your big chance. Be sure to catch the schpiel on **Sunday, March 13** or **Wednesday, March 16**, because after all, "you wouldn't want to see me get angry" if you miss it!

# ★ SUPERHEROES ★

# Meet Our B'nai Mitzvah Students

## Max Werner December 4

I am a 7th grader at Wissahickon Middle School, and was compelled to help those in need when Hurricane Ida devastated parts of Maple Glen and the surrounding areas. I answered a call to support a school that had been devastated by the hurricane.

**Our Lady of Mercy School** in Maple Glen, sustained serious damage to the interior of the school including several of its K-5 classrooms. Many of the students lost valuable books and learning materials. For my Bar Mitzvah project, I decided to ask my friends and family to help gather books and gift cards which would help to replenish classroom libraries at OLM. I accomplished this task and in one month was able to do just this.



potential adopters about the cats to help them get adopted and to give people information about how to care for their cats. Our Mitzvah Project is part of our bigger mission of ongoing service to the animal rescue community as part of our family's charitable fund (The Perlmutter Fund for Animal Welfare: [www.ouranimalfund.org](http://www.ouranimalfund.org)) We raise money through fundraisers (like our Sports Super Pack fundraisers where we pack up nice sports cards and sell them), donate our time to rescues, and create awareness in our communities. Come and visit us on Saturdays afternoons at the PetSmart and please donate to our Fund at the website above.



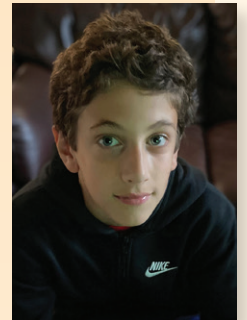
## Matthew Wagner January 15

For my Mitzvah Project I am collecting sports equipment for The **Add B. Anderson School** in West Philadelphia. I have decided to collect sports equipment for kids in the local community because I love playing sports and I feel it has had a positive impact on my life. Many kids do not have the resources needed to play sports and many communities need equipment to put together recreational sports teams. It is important for kids to be active and learn how to be part of a team. From gloves to bats, I will be collecting these items from now until the Spring of 2022. I can't wait to be able to drop off these items so others can experience what it's like to be on a team. Please reach out to [amybethw11@gmail.com](mailto:amybethw11@gmail.com) if you have any new or gently-used items to donate. I will also be collecting on the day of my Bar Mitzvah, so feel free to bring items at that time. Thank you so much!!!!



## Fisher Adams January 22

For my Mitzvah Project, I will be collecting books to donate to **Add B. Anderson School**, which is a K-8 school in Philadelphia. Up until recently, they didn't even have a library at the school, so they are in need of books for the students. I have a passion for reading, and have always been fortunate enough to have access to a lot of books. There are many children who don't have the same access to books that I have, and I'm hoping to make a difference, even in a small way, so other kids can have the opportunity to develop a love of reading just like me.



## Gavin Litten February 5

For my Mitzvah Project, I decided to choose **Pitch In for Baseball and Softball** since baseball is a passion of mine. I have played baseball for 7 years now, and I can't imagine not having the ability to play because there isn't proper equipment. I am creating a donation page and will also host a Spring Equipment Drive to help those in need be able to play the sport I love. Look for my page in the weeks to come at [www.pifbs.org](http://www.pifbs.org). This association also sends money to Israel so that boys and girls can play baseball and softball there as well.



## Jordan & Liam Perlmutter January 15

We are passionate about helping homeless animals. For our Mitzvah Project we volunteer at Brenda's Cat Rescue as Cat Ambassadors. **Brenda's Cat Rescue** has a small space at the Luv-A-Pet Center in the Plymouth Meeting PetSmart. The mission of the Rescue is to find forever homes for all of the cats. We take care of the cats by providing them with lots of affection and playtime. We feed them and clean their cages. We also educate





*Evan Segal*

# GET CONNECTED

## Business & Career Network

### Back in Business in 2022!

GET CONNECTED is Congregation Beth Or's Business and Career Networking Group.

We meet the 2nd Monday of every month either in-person or via Zoom.

**Our next meeting will be Monday, January 10 at 7pm on Zoom.** Networking expert Diane Darling has been invited to lead the professional development portion of our meeting. Diane is a renowned speaker, instructor and leadership coach specializing in professional networking strategies. If you are looking for some fresh new business development ideas for the new year please join us for what will be an interesting and rewarding session. All Beth Or members can attend for free and are encouraged to bring a networking buddy as a guest. Contact Evan Segal at [evan@segalfinancial.com](mailto:evan@segalfinancial.com) for more info.

In November we were excited to be back at Beth Or with our first in-person meeting since early 2020. Safe, warm, and comfortable under the tent on the Flitter Family Terrace, about 25 members gathered to schmooze and network. It was great to be back together again!



## 2021 Mitzvah Months & Mitzvas Day — It's a Wrap!

By the time you read this issue of Beth Or Spotlight, our 2021 Mitzvah Months and Mitzvas Day activities will have concluded. But as of this writing, the bins are full from early donation drop-offs, and our Committee members and Sisterhood friends looked forward to seeing you for end-of-year events on December 12 and 25.

Special thanks to our project Chairs: Faye Benshetler, Carole Chasen, Marlene and Bob Cohen, Shari Coltoff, Fred Dugan, Caren Gutman, Beth and Bernie Johl, Lynn Levy, Jody Pascal, Rachel Steinberg, Beverly Weinberg. Also, thanks to Sisterhood's Melisa Lubinski, Janet Katz, and Faye Benshetler for leading the Cradles to Crayons and Covenant House projects.

Thank you for supporting the Beth Or Social Action Committee efforts! To get involved with future plans or to suggest an idea, please be in touch with us. — *Today!*

Susy Krimker, Social Action Co-Chair, [susykrimker@gmail.com](mailto:susykrimker@gmail.com) • Margie Chachkin, Social Action Co-Chair, [chachkin@aol.com](mailto:chachkin@aol.com)



## February's a Fine Time to do a Mitzvah — Help Us Feed Families in Transition

This February, Beth Or will once again support Inter-Faith Housing Alliance to fulfill the mitzvah of helping families who are experiencing homelessness and food insecurity, transition to independence and self-sufficiency.

**We are excited to announce that we will partner with Bethlehem Baptist Church (BBC) to cover the Interfaith Hospitality Network Program. BBC will house the families throughout the month and Beth Or volunteers will provide daily meals and transportation.** For many of us, this partnership between our two congregations represents a homecoming as the Spring House church purchased the property from our synagogue in 2006.

The spiritual leaders of both houses of worship, Reverend Charles Quann of BBC and our own Rabbi Greg Marx, are longtime friends and fellow members of the Wissahickon Faith Community Alliance (WFCA). This personal relationship makes their February homestay partnership all the more special.

Attention Transportation Volunteers: A Pennsylvania Department Transportation Bureau of Driver Licensing history (website: <https://apps.pa.gov.com/idr>) must be provided by anyone who signs up to drive families to and from Bethlehem Baptist Church. Many of you have already provided this information to Inter-Faith Housing Alliance). If it has been longer than 3 years since you provided this record, please send your updated PA individual driver report to IFHA's Community Resource Manager, Sue Zomberg, [sue@i-fha.org](mailto:sue@i-fha.org).

**We will once again use Care Calendar to sign up for volunteer slots: <https://www.carecalendar.org/> Code: 224429, Password: 1111**

Please contact program chairs, Nancy Shaffer-End, [theends4@msn.com](mailto:theends4@msn.com), or Lynn Edelman, [lynn.edelman2015@gmail.com](mailto:lynn.edelman2015@gmail.com), with any questions. Thank you in advance for volunteering to participate in this important community mitzvah.



## Working to Make Sure Everyone's Vote Counts

In our system of government, the people are supposed to choose their elected officials. This concept is so much a part of our country's foundation that it's rarely questioned. In practice, however, it's too often been the other way around — legislators choose who can vote for them and for their opponents.

The process that leads to this situation is called "gerrymandering," and it's employed by members of both parties. Using this approach, politicians manipulate the borders of legislative voting districts to either include or exclude certain groups of voters — all but guaranteeing their desired outcomes. This activity is frequently used to eliminate or diminish the impact of the voices of communities of color. It can also make it difficult to make progress on important community issues, such as addressing gun violence and school funding inequities, since gerrymandering often results in a district's elected official not being fully accountable to their constituents.

Pennsylvania is in the process of redrawing district lines based on the results of the 2020 census; these new borders will affect voting in the Commonwealth for the next ten years. As part of the "Just Districts" component of RAC-PA's racial justice campaign, Just Elections, Beth Or members are working to ensure that the new PA House and PA Senate districts are fair and allow everyone's vote to count. Eighteen Beth Or congregants recently gathered on Zoom to discuss this situation and learn how we can impact this critical issue.

### To learn about this issue and how you can make a difference on voting equity:

- **View the 1-hour video of the information session**

<https://bit.ly/3GEk0Rq>



- **Get more information and updates about PA General Assembly redistricting**

<https://www.fairdistrictspa.com/>



- **Access the resource guide from the information session**

<https://bit.ly/31Rom8N>



- **Learn more about national voting rights issues**

<https://rac.org/issues/voting-rights>



- **Read about districting that impacted a community of color in Philadelphia**

<https://bit.ly/33q6gvp>



Redistricting and voting rights are dynamic situations, with new developments occurring frequently. To continue to receive information about the Just Elections Campaign, ask questions, or discuss these issues, please contact Linda Block-Love ([lblocklove@gmail.com](mailto:lblocklove@gmail.com)) or Janet Katz ([bocakatz@aol.com](mailto:bocakatz@aol.com)) to connect or get on our email list.

Shalom!



# Beth Or Brotherhood

## We Were Not Surprised

Doug Burtnick, Brotherhood President



Doug Burtnick



In previous articles from Brotherhood, we've touched on resilience, the flexibility of playing the hand we're dealt and being there for our community. Little did we know how important those characteristics would be as we moved through the end of 2021. But one thing we would have guessed is that Beth Or and Beth Or Brotherhood would show evidence of all of the above... in spades.

So, we're not surprised that the religious school kick-off in September that Brotherhood helped with began a great year so far for Beth Or kids. We weren't surprised the Brotherhood Car show drew another near record crowd in October. We weren't surprised that when Brotherhood members and Beth Or families were pulled away by personal events, other Brotherhood members stepped in to make things work. We weren't surprised Brotherhood continued to support JRA by delivering much needed food to families in need throughout Philadelphia. We were not surprised Brotherhood's partnership with Beth Or to create Beth Or Cares got off to a great start bringing much needed health-oriented programs and testing to Beth Or.

Nor were we surprised this year's Annual Dinner & Fundraiser was a wonderful reprieve from everything we've dealt with in 2020/21. It gave Brotherhood members and Beth Or men and women a chance to reconnect, break bread, laugh and support great causes. We thank the myriad of volunteer leaders and doers, auction donors, sponsors and participants for making this one of most enjoyable Brotherhood Dinners ever. Special thanks to the Beth Or clergy and

staff, and to SARGE the comedian who made it ok for us to pick on ourselves a bit and to have a lot of fun doing it.

Not lost in any of this is the unsurprising openness of Brotherhood members to welcome Beth Or men to share the friendships and bonds that are signified by our logo's phrases: **Fellowship, Community, Service and Support.**

Please join us on January 21 in the Beth Or Sanctuary for a special shabbat honoring Brotherhood and our principles.

### Thank you to our Annual Dinner & Fundraiser Sponsors:

**DIAMOND:** McCarthy & Company, PC CPAs; Leyland Alliance LLC

**PLATINUM:** First Trust Bank; Glenmede

**GOLD:** Goldsteins' Rosenberg's Raphael Sacks; SG&H Shubert Goodman Huttner LLP; Riley Riper Hollins & Colagreco Attorneys at Law; Haverford Trust; Keller Williams; Iljor Properties

**SILVER:** Joseph Levine & Sons; Mortgagecountry LLC; In Home Vet; Nappen Family; Penn Community Bank; Samson Wealth Management; Rabinowitz Glass; Kreisher Miller; MIRA Development

**BRONZE:** Drescher Physical Therapy; Segal Financial; The Kovalcik Family

## KOSHER WINE SALES

Now you can purchase kosher wine all year long and benefit Beth Or! Use the Beth Or affiliate link on [kosherwine.com](http://bit.ly/BethOrBrotherhood): <http://bit.ly/BethOrBrotherhood> or click the KosherWine symbol on the bottom right side of the Beth Or website home page, "Connect With Us" section.

**5% of all sales given back to Brotherhood to benefit Beth Or programming!**

Questions? Contact [info@bethorbrotherhood.org](mailto:info@bethorbrotherhood.org).





# Beth Or Sisterhood

## What is Really Behind Comfort Food Cravings?

Melisa Lubinski, Sisterhood President

The moment the temperature drops and the first frost hits we want brisket, mashed potatoes and other delicacies that fill us and warm us up, too. We instinctively reach for Uggs, a scarf, a heated blanket and a fire in the fire place that provide physical warmth. But, something else is inwardly triggered by these beloved foods... memories, nostalgia and being part of family or a community. These foods conjure up good emotions, trigger positive brain chemistry, easily enable us to pass on skills to the younger generation and they just taste amazing.



Our Bubbies and mothers are not wrong knowing that chicken soup (Jewish penicillin) has health benefits and helps fight colds. The Jewish philosopher and physician Maimonides found that it helped with asthma, leprosy and gave pregnant women good nutrition. Modern science has shown that the various vitamins and the amino acids from chicken protein can help build immunity. Bubbies and moms also know that the smell of soup and other aromas are signals that something special is coming, like a holiday or family gathering since soups, briskets

and mac & cheese are easy to make and feed many people.

Last month, Sisterhood hosted a Kugel Cook-Off Contest and Discussion. Fourteen samples were entered and judged in three categories. This event helped introduce a new Sisterhood cookbook project to the Congregation. A common discussion theme was that kugel recipes had been passed down through the generations, which added to their value, and our cooks associated wonderful memories of hours spent in kitchens creating these delicious masterpieces.

This warmth from within is special and nothing can take it away from you. It has the capacity to grow and is shareable like a smile. Sisterhood wants you to spread the warmth within our community. Start searching out your favorite, proven family recipes to share, including their background stories. Recipe boxes are located in both the Spain and school lobbies. I intend to submit Butternut Squash Mac and Cheese, a dish my 17 year old daughter Morgen and I have made dozens of times. The best part is, she requests it.



Melisa Lubinski



Sisterhood

CONGREGATION BETH OR

Fellowship • Community  
Service • Support

### Congratulations to our Kugel Cook-Off Winners!

Holiday • Marlene Cohen

Sweet • Nancy Portney

Savory • Ellen Mirbach

Please Support the

*Tarshis Gift Shop*

*Proceeds Benefit Beth Or Sisterhood Programs*

#### Hours:

For a personal appointment, contact Bobbi Adair, [Bobbifadair@gmail.com](mailto:Bobbifadair@gmail.com).

**Winter Hours:** Sunday, 9:30 am – 12:40 pm • Tuesday 4:30 pm – 6:30 pm • Friday 9 am - 12 pm

Discounts available for Sisterhood Members and Beth Or Staff | Great Monthly Sales and New Arrivals

## ADULT PROGRAMS

### AARP Driver Safety Courses

**Refresher: Thursday, February 3 • 10 am – 2 pm**

**Basic: Wednesday, February 16 & Thursday, February 17 • 10 am – 2 pm**

Participating in AARP Driver Safety classes can help save money on your car insurance! These courses will take place in-person at Beth Or. Cost: \$20/AARP member; \$25/non-AARP member, payable by check to AARP Driver Safety (no cash or credit card accepted). Participants must be fully vaccinated and must bring a current Driver's License and current AARP Membership Card (if applicable). Advance RSVP required to Jillian Peskin, [jpeskin@bethor.org](mailto:jpeskin@bethor.org).

### Book Discussion: *Eternal*

**Wednesday, March 8 • 6:30 pm**

Read the New York Times bestseller, *Eternal*, by Lisa Scottoline – a sweeping and shattering epic of historical fiction fueled by shocking true events, the tale of a love triangle that unfolds in the heart of Rome...in the creeping shadow of fascism. Then, join us for a discussion led by Dottie Singer. The Zoom discussion will take place as part of Beit Sefer Cafe. The program is part of Beth Or's 2021-22 Book Series and open to all who love to read books with Jewish content.

## BROTHERHOOD/SISTERHOOD EVENTS

### Sisterhood Torah-to-Go with Cantor Green

**Wednesday, February 2 • 7:30 pm**

Cantor Green will discuss the Torah portion of the day on Zoom. Advance RSVP will be requested so participants can be sent materials prior to the event. More details and Zoom Registration link to come.

### Women's Shabbaton

**Saturday, February 5 • 9 am – 1 pm**

All Beth Or women are invited to spend Shabbat morning together to focus on themselves, on their wellness, and on their connection with each other. The morning will include a menu of exciting activities.

A few highlights: Yoga with a Jewish Flair (9 am); Women-led Shabbat Service (10 am); Dynamic Speaker (11 am); Chat & Nosh (12 pm); Painting for Stress Relief & Fun-Spatter Art (12:30 pm). Check your Chai Lights email or the website calendar for full schedule, RSVP & cost. This program is sponsored by Sisterhood.



### Sisterhood Tea

**Sunday, February 27 • 2 pm – 4 pm**

Join Sisterhood for a winter themed tea to celebrate our members and thank them for all their help with Tikkun Olam that we have completed throughout the past year. Learn the health benefits of tea, experience tea tasting and enjoy a mini sit down tea service. Pricing and RSVP details to come soon.



## GET CONNECTED: Beth Or Business & Career Network

### Monthly Networking Events

**Monday, January 10 • 7 pm – 8 pm**

Join the Get Connected group on Zoom this month to network, brainstorm, and build meaningful relationships that may help grow your business or help you find your next career or job. All Beth Or members are welcome to participate. See the Get Connected article in this issue for January's event details. Check the web calendar listing or your weekly Chai Lights email for the Zoom meeting link. Contact Evan Segal, [evan@segalfinancial.com](mailto:evan@segalfinancial.com) with any questions.

## HOLIDAYS AND SHABBAT EVENTS

### Music Shabbat

**Friday, January 14 • 7:30 pm**

Tonight's Shabbat service is enhanced with the sound of music. Cantor Green and Cantor Murley will sing some of their favorite melodies that they've performed together over the past decade.

### Brotherhood Shabbat

**Friday, January 21 • 7:30 pm**

Brotherhood is honored and participates in tonight's service.



# Beth Or Events

## Tu B'Shevat Celebration

**Friday, January 14 • following Music Shabbat Worship Service**

In celebration of the Jewish birthday of the trees, Tu B'Shevat, join us after services to make your own succulent plants to take home with you, playing off of David Ben-Gurion's famous phrase, "Let's make the desert (plants) bloom!"

Advance RSVP required so that we can order supplies.

Contact Jillian Peskin, [jpeskin@bethor.org](mailto:jpeskin@bethor.org) with any questions.



## Heart & Soul Shabbat Winter Journey

**Saturday, February 19 • on your own**

Rabbi Bonder is creating a new motivational Podcast to keep us moving spiritually on a cold winter day. Stream to your device to get your heart pumping and stir your soul as well. Listen anytime at your leisure on or after February 19. Download the podcast at [www.bethor.org/cbopodcasts](http://www.bethor.org/cbopodcasts)

## SPECIAL EVENTS

### Meals That Matter

**Mondays, January 10 & February 7 • 10 am – 12 pm**

Meals That Matter meets monthly in the Beth Or main kitchen to prepare meals for KleinLife who distributes Kosher meals to those who are food insufficient. We welcome new volunteers at any time. Please RSVP Caren Gutman at [carengutman@gmail.com](mailto:carengutman@gmail.com) if you wish to join us. No experience needed! We follow Beth Or safety protocols. At this time please be vaccinated and wear a mask.

### Beth Or Cares: Heart Health Program

**Sunday, February 6 • 9:45 am – 10:45 am**

Hold this date. Program details to come soon!

### Reconsecration of our Home

**Friday, February 11 • 7:30 pm**

Join us to mark a major milestone as the Congregation celebrates and reflects on paying off the mortgage and the outright ownership of our beloved synagogue building. More information about the event will come soon. The building is all about the people and moments inside of it! We are creating a video montage and would love to incorporate special memories Congregants have of celebrations and other occasions involving Beth Or. If you would like to participate, please share a photo(s) depicting what our home means to your family — Mitzvahs, weddings, baby naming, Tot Shabbats, confirmations, consecrations, etc. Send photos to [info@bethor.org](mailto:info@bethor.org) by Friday, January 7 for inclusion.

## "The Last Boy" on Broadway – Yom Hashoah Trip to NYC

**Wednesday, April 27 • 6pm**

Join Rabbi Marx on a trip to New York City to see the benefit performance of "The Last Boy... A New Play with Music". As a program sponsor, Beth Or has 40 orchestra seats available for the 90-minute, one-act performance. We will meet at the Hamilton, NJ train station and travel together by train to NYC. RSVP to Rabbi Marx, [gmarx@bethor.org](mailto:gmarx@bethor.org) or Barbara Murtha, [bmurtha@bethor.org](mailto:bmurtha@bethor.org). Act now – there are only 11 tickets left in our allotment!



## Lifelong Learning

### MARK YOUR CALENDAR!

#### Beit Sefer Café

**Tuesday, March 8 • 2 class sessions in-person at Beth Or**  
**Tuesday, March 22 • 2 class sessions remotely on Zoom**

## BEIT SEFER Café

We are excited to invite you once again to our popular Beit Sefer Café. Join your congregational family for a night of learning, engagement and fellowship. Our first event, scheduled for March 8 will be completely in-person with teachers such as a Rabbi Marx, Rabbi Bonder, Aaron Nienshultz and more. On March 22 we will study 100% virtually on zoom with a variety of teachers and topics. We are hoping that you will be able to join us for at least one or potentially both evenings of stimulating discussion, learning and Jewish engagement. More details coming soon!





## *Celebrating Your Simcha*

Our beautiful building provides the perfect place to celebrate your family's simchas.

Our catering partners on the Approved Caterer List — shown below and published on our website ([www.bethor.org](http://www.bethor.org)) stand ready to provide delicious food for your event. They can provide menu options at a range of prices designed to meet your specific needs and budget.

We hope that you will consider having your celebrations at Beth Or. To learn more about hosting an event at Beth Or, please contact Amy Abrams or Jillian Peskin at 215-646-5806.

### **Approved Caterer List — 2021/22**

<b>Annemarie's Cuisine • Annemarie Silva</b> .....	215-806-7675
<b>Betty the Caterer (Kosher) • Jeff Kalinsky</b> .....	215-224-8400
<b>Classical Caterers • Evan Bernstein</b> .....	732-297-6444
<b>Go2eventplanner (new Phila. based) • Arlene Rotfeld</b> .....	516-909-8580
<b>Infinity by Design • Fred Morganstein</b> .....	610-405-9787
<b>Panache Catering by Foodarama (Kosher) • Gary Rosenwald</b> .....	215-633-7100
<b>Pumpernick's Deli • Jeff Klein</b> .....	215-393-5800



# Annemarie's Cuisine

Be A Guest At Your Own Event

**CHEFS • SERVERS • BARTENDERS**

Baby Naming, Bris, Kiddush Lunch, Birthdays,  
Bar & Bat Mitzvah, Weddings, Showers,  
Graduations, Funerals, Shiva Dinners

**215-806-7675**

www.annemariescuisine.com

Email: catering@annemariescuisine.com

Looking forward to making your next event a success!



# Go2eventplanner

Go2eventplanner.com

Specializing in At-Home/Temple Catering  
and event coordination, with Custom Menus, and  
Artistic Presentation

Engagements, Showers, Garden Weddings,  
Mitzvahs, Tent Parties

Let's do Something Wonderful Together!

Arlene Rotfeld, CIA Food Stylist  
Cuisine | Staff | Chefs | Rentals | Design  
go2eventplanner@gmail.com  
516-909-8580



# Classical Caterers



**Fine Kosher and Glatt Kosher Catering**

*Our Service Will Delight... Your Every Expectation.*

732.297.6444 • www.classicalcaterers.com

Extended kiddushes, mitzvahs, baby namings & more



*Infinity*  
CATERERS

(215) 509-7280  
infinitycaterers.com

4401 Cresson Street • Philadelphia PA 19127

# Panache Caterers

BY FOODARAMA

CATERING FOR ALL OCCASIONS—IN YOUR HOME, OFFICE, OR  
TEMPLE—FOR OVER 50 YEARS—CERTIFIED KOSHER



CALL FOR YOUR FREE MENU AND PARTY PLANNING GUIDE  
215-633-7100 888-309-3800

WWW.FOODARAMA.COM



Pumpnick's catering department guarantees to  
impress your guests. Smoked Fish, Deli, Sandwich, Wrap  
Trays and more. Bar/Bat Mitzvah's graduations, Birth-  
days, Sporting Events, Shiva Dinners and more.

**215-393-5800 • pumpnicksdeli.com**



# Chai-Lights — November/December 2021

## New Members

Josh, Nancy, Theo & Eliza Baird  
Timothy, Jordan, Charlie & Finn Williams  
Erica, Dorian & Maddie Apfelbaum  
Mitchell & Nina Apfelbaum  
Emmy Rutberg  
Richard & Gail (Gigi) Baum

## Rejoining Members

Lee, Stephanie, Alex, Jacob & Ella Lessick

## May Their Memory Be A Blessing

Irene Goldstein, mother of Bob Goldstein  
Robert Cohan, congregant & husband of Elaine Sherman  
Sandra Lubow, former mother-in-law of Howard Altman  
Helene Rosenfeld, congregant, mother of Ellyn Rosenfeld, wife of Lester Rosenfeld, z"l  
Bernice Small-Hollander, mother of Robyn Wang  
Beth Koren, wife of Tedd Koren, mother of Seth & Shayna Koren & sister of Shari Coltoff  
Bob Kosloff, cousin of Beth Rubin  
Charles Oslick, grandfather of Diana Steinberg  
Daniel Sussman, brother of Naomi Sussman, z"l & brother-in-law of Marc Meketon  
Ruth Castor, grandmother of Jillian Peskin  
Doreen Saltzberg, mother of Laurie Appelbaum  
Barry S. Borsky, father of Marla Brown  
Melvin Garber, father of Stephanie Lubin  
Harvey Steinberg, father of Matt Steinberg  
Linda Elgart, wife of Stanley Elgart, z"l  
Edward Itzenson, father of Gary Itzenson  
Iris Fine, congregant, wife Michael Ira Fine, z"l and mother of Faith Fine and Alan Fine  
Arnold Gelman, congregant and husband of Janice Gelman, z"l  
Shirley Newman, mother of Judith Newman & grandmother of Michelle Issadore  
George Slotnick, uncle of Marty Tarabar  
Julian Frankel, father of Cori Miller

## Mazel Tov

Engagement of Brett Kravitt, son of Dave Kravitt & Karen Friedman, to Brittany Schoonover  
Engagement of Abby Kaiser, daughter of Bill & Marcy Kaiser, to Dak Kofsky

Engagement of Sam Kaiser, son of Bill & Marcy Kaiser, to Merri Berman  
Engagement of Alexander Pascal, son of David & Jody Pascal, to Kyla Gustavson  
Marriage of Erica Brownstein & Marc Neff  
Wedding of Heather Bernstein, daughter of Philip and Hope Bernstein, to Marc Levin  
Birth of Skyler Elias Goldberg, grandson of Norm & Stephanie Lubin  
Birth of Maya Ruth Roberts, granddaughter of Mona Gold & Les Duman  
Birth of Charles Samuel Lotman, son of Keith & Lauren Lotman

Birth of Naomi Miller, granddaughter of Bob & Faye Miller  
Baby Naming of Ethan Reed Cushner, son of Chad & Monica Cushner  
Baby Naming of Emerson Adair Kuhn, granddaughter of Bobbi & Garry Adair  
Baby Naming of Rosalyn Guinevere Wheatman, granddaughter of Steven & Ellen Wheatman  
B'nai Mitzvah of Jordan and Liam Perlmutter  
Bar Mitzvah of Fisher Adams  
Bar Mitzvah of Gavin Litten  
Bar Mitzvah of Charlie Zislis

## Flower Donations

### Additional December Flower Donations

**November 12** • Hope & Philip Bernstein in honor of the marriage of their daughter, Heather to Marc Levin

**November 26** • Steven & Ellen Wheatman in honor of the Baby Naming of their granddaughter, Rosalyn Wheatman

### January Flower Donations

**January 14** • Robert & Amy Wagner in honor of Matthew Wagner's Bar Mitzvah  
Frank & Susan Perlmutter in honor of Jordan & Liam Perlmutter's B'nai Mitzvah

**January 21** • Travis & Cindy Adams in honor of Fisher Adams' Bar Mitzvah

### February Flower Donations

**February 11** • Michael & Dorie Litten in honor of Gavin Litten's Bar Mitzvah

**February 25** • Lori Frankel & Ben Zislis in honor of Charlie Zislis' Bar Mitzvah



# Memorials and Contributions

## Rabbi Marx's Discretionary Fund

---

### In Memory of

IRENE GOLDSTEIN

Aileen Greenberg-Kriner & Michael Kriner

Joe, Donna, Molly &

Jennifer Polin

Robert & Nina Sternberg

BETH KOREN

Elaine Slott

Jane & Zane Kurtz

LEONARD Z. BARTIKOWSKY

IRENE GOLDSTEIN

JOAN B. LEVITHAN

Ellen & Scott Levithan

IRVIN KRUM

Elynn Klein

HELENE ROSENFELD

Elynn Rosenfeld

JUDY H. COHEN

Harvey & Joan Azarva

DEBBIE BATT

Jody & David Pascal

KAREN STESIS

Ken Harris & Mona

Zeehandelaar

DEBRA HIRSCH BATT

Lisa & Jim Steiker

ROSE HERSHMAN

Madeline Lander

JOAN PEARLSTEIN

Robin & Bruce Markovitz

SANDRA J. NEEDLEMAN

Sandy & Larry Frankel

JULIE DAVIS

Stephen & Anita Davis

JUDITH SCHRANZ

Susan & Jeffrey Bellos

SARAH & MANUEL KAPLAN

Zane & Jane Kurtz

### In Honor of

MICHAEL DRATCH on his

80th birthday

Sandy & Larry Frankel

MOGAN BLOOM's Bat Mitzvah

The Bloom Family

Wedding of ERICA

BROWNSTEIN & MARC NEFF

Erica Brownstein

### Congratulations to

AMY & MITCHELL ABRAMS

on the Birth of THEO

Elaine Slott

RABBI & LAURIE MARX on

becoming Grandparents

Susan & Jeffrey Bellos

### In Appreciation of

RABBI MARX

Ilana & Jeffrey Brown

Bobbi & Garry Adair

Jill & Howard Altman

Marlene & Bob Cohen

Dennis & Susan Cohen

Allen & Shari Samuels

Robin Zahustecher

Mindi Vogel

Toby, Rich & the Sterling,

Siegal & Curry Families

RABBI MARX & in honor

of new granddaughter

Herb & Renee Cohen

### Speedy Recovery to

DIANE CUTLER

Sandy & Larry Frankel

## Rabbi Bonder's Discretionary Fund

---

### In Memory of

SAMANTHA ROSEN

Gail Edelsohn

FLORENCE WALLIS

Jeff & Jessica Wallis

JENNIE (JACKIE) GROSSMAN

Larry & Joanne Grossman

### In Honor of

Wedding of MICHAEL &

SAMANTHA GARBOSE

Bill & Lynne Garbose

MORGAN BLOOM's

Bat Mitzvah

The Bloom Family

### In Appreciation of

RABBI BONDER

Marlene & Bob Cohen

Allen & Shari Samuels

Robin Zahustecher

Mathew Bernstein

S. David & Rosalind Krimins

William Judd

Stacey Thal

### In Appreciation of

JIM TANNENBAUM & FAMILY

Jake Toyberman

### Mazel Tov to

JOANN SIMON on the

occasion of her very special

birthday!

Amanda & Don Berry

## Cantor Green's Discretionary Fund

---

### In Memory of

RUTH MANN

Gail A. Edelsohn & Henry Mann

GRETE SCHWARZ

Susan & Jeffrey Bellos

FREDA COOPER

Wendy & Michael Blum

### In Honor of

Bar Mitzvah of MASON

PETKOV

Shelly & Steve Serota

MORGAN BLOOM's

Bat Mitzvah

The Bloom Family

Wedding of ERICA

BROWNSTEIN & MARC NEFF

Erica Brownstein

### In Appreciation of

CANTOR GREEN

Ben Pokedoff

Marlene & Bob Cohen

Allen & Shari Samuels

Robin Zahustecher

## Allen Apter Memorial Life Long Learning Endowment Fund

---

### In Memory of

ROBERT SIMON

Betsy Farber Sternthal

DONALD H. SACHS

Kathie B Sachs

## Andrew Jarrett Fund for Religious School

---

### In Memory of

BETH KOREN

Robin Arnold

## Annual Appeal

---

### In Memory of

BETH KOREN

Jan & Bob Zauzmer

EDWARD ITZENSON

Michelle & Jon Schwartz

### In Appreciation of

BETH OR STAFF for their

work on the High Holidays

broadcast

Marc Benshetler

## Arnold Berkowitz Memorial Fund for Veteran's Shabbat

---

### In Memory of

HERMAN MARCUS

Dale & Paul Snyderman

BOB-E TRESKY

Elsa-Lu Berkowitz

### In Honor of

Our Great MILITARY SERVICE

MEMBERS

Marc Benshetler

## Barbara Goldberg Nursery School Fund

---

### In Memory of

ISABEL PHILIP

Audrey Philip

RUTH CASTOR

Rabinowitz Family

Sherry Spector

## Berman Family Caring Community Endowment

---

### In Appreciation of

MARGIE CHACHKIN

Lisa Brown

## Brotherhood Camp Harlam Scholarship Fund

---

### In Memory of

RUTH CASTOR

Allison, Jay, Samantha &

Joshua Levin

Ellen & Rodger Wichterman

CHARLES BENSCHETLER

Eric & Faye Benshetler

HARVEY STEINBERG

Sheri & Greg Gerson

## Capital Fund

---

### Mazel Tov to

AMY & MITCHELL ABRAMS

on the birth of their first

grandchild

Liz & Bob Hirsch



## Memorials and Contributions

### Caring Congregants Fund

---

#### In Memory of

SHIRLEY COHEN  
Allan Cohen  
RUTH CASTOR  
Candice Chachkin  
Herbert & Renee Cohen  
Jennie Nerenberg & Bruce Dorsey  
RUSTY LIPSCHUTZ  
Elliot & Beth Selsley  
HELENE ROSENFELD  
IRENE LUBIN  
Norman & Stephanie Lubin  
BETH KOREN  
Sylvia Chachkin  
HELENE ROSENFELD  
Bruce Dorsey & Jennie Nerenberg

#### In Honor of

Birth of THEO ISAAC PONCE  
Bruce Dorsey & Jennie Nerenberg  
Ellen Werther  
Bar Mitzvah of MASON PETKOV

Herb & Renee Cohen  
JOANN SIMON's milestone birthday

Jody & David Pascal  
ABBY PETKOV's Special Birthday  
Judy & Jonathan Beck  
MARLENE COHEN's Special Birthday  
Sylvia Chachkin

#### Congratulations to

AMY & MITCHELL ABRAMS  
Sylvia Chachkin

#### Mazel Tov to

RENEE & HERB COHEN  
on their 50th wedding anniversary  
Allan Cohen & Susan Utain Cohen

#### Speedy Recovery to

DEBBIE SCHWARTZ  
Beth & Bernie Johl

### Disaster Relief Fund

---

#### In Memory of

IRENE GOLDSTEIN  
Marilyn Ackerman & Todd Solodar  
DR. ALICE BERLIN  
Norman, Betsy, Dan & Michael Berlin

#### Mazel Tov to

AMY & MITCHELL ABRAMS  
on the birth of Theo Isaac  
Margie Chachkin

### Ellen & Norman Werther Endowment Fund for Special Programs

---

#### In Memory of

NORM WERTHER  
The Werther Family

### Emily Cara Garbose Resource Fund

---

#### Congratulations to

The MARX FAMILY on the Birth of baby LILAH  
Lisa Brown

### Friends of IDF Fund

---

#### In Memory of

JOSEPH GRINGLAS  
Margie Chachkin

### General Fund

---

#### In Memory of

ANN CRIGGER  
Beth & Bernie Johl  
HELENE ROSENFELD  
David & Eileen Eskin  
KENNETH FREEMAN  
Dolly Freeman  
DOREEN SALZBERG  
Sara Wenger  
MORTON ALTHOUSE  
IRWIN GROSS  
Janessa Althouse & Mark Gross  
EDWARD ITZENSON  
Rabinowitz Family  
BETH KOREN  
Susan Sussman  
Hillary Wagner  
Jerome Hogan  
David Goldstein  
Lynn Edelman  
Bob Wenger  
Harry Ziff  
Stu Briefer

### In Honor of

JOANN SIMON'S SPECIAL Birthday  
Elaine Slott  
Liz & Bob Hirsch  
Mirjam Mitchell  
Robin Barg  
CARY & NANCY FLITTER  
Harry & Jo Ann Windman  
Marriage of ERIC BROWNSTEIN & MARC NEFF  
Howard & Susan Levinson  
MIA VIOLET TANNENBAUM  
James & Ellen Tannenbaum  
LAUREN & BERT MAX's Aufruf  
Lauren & Bert Max  
GILBERT/COOPER FAMILY  
- Lisa, Martin, Jonathan & Lindsay  
Marlene & Stan Allen

### In Appreciation of

JAKE TOYBERMAN  
James & Ellen Tannenbaum

### Goldstein Religious School Scholarship Endowment in Memory of Bernice & Irv Goldstein

---

#### In Memory of

JUDITH COHEN  
David Goldstein & Bonnie Libby

### The Hannah Miller Book & Education Fund

---

#### In Memory of

Our beautiful granddaughters,  
STELLA & JOY  
Larry & Ilene Stella  
HANNAH ELAINE LEVY  
MILLER  
Lynn Levy & Tom Miller

### Interfaith Apartment Fund

---

#### In Memory of

BETH KOREN  
Nancy Shaffer-End

### Israel Emergency Fund

---

#### In Memory of

RUTH CASTOR  
Robert & Susan Silverstein

#### Mazel Tov to

AMY & MITCHELL ABRAMS  
on the Birth of Theo  
Robert & Susan Silverstein

### In Appreciation of

RABBI MARX  
Amy Small-McKinney & Sarah McKinney Simanglatt

### Jenna Demar Educational Fund

---

#### In Memory of

ALVIN CARP  
Eric & Rachael Carp

#### In Honor of

ABBIE HURWITZ becoming a Bat Mitzvah  
Cathy Weiss

### Kate Svitek Memorial Garden Fund

---

#### In Memory of

BETTY SKLENAR  
SELMA COHEN  
Andrea & Bob Sklenar  
BETH KOREN  
Beth & Bernie Johl  
Naomi Gubernick  
BETH KOREN  
HERBERT CLAIR  
HARRY K. CLAIR  
Frank & Ellen Svitek  
HELENE ROSENFELD  
Frank, Ellen & Michael Svitek

#### In Honor of

Birth of Grandson, THEO ISAAC PONCE  
Ellen & Frank Svitek

### Linda Gerson Memorial Fund for Grounds' Beautification

---

#### In Memory of

GIL SELVIN  
Philip Gerson

### Lore Heinsheimer Memorial Youth Assistance Fund

---

#### In Memory of

RUTH CASTOR  
The Diamond Family

### M & M Family & Youth Programming Initiative Fund

---

#### In Memory of

RUTH CASTOR  
Sheri Gerson  
Warren, Pam, Morgan & Ashley Bloom

### Maurice Le Bow Memorial Computer Endowment

---

#### Congratulations to

ANNA & EVAN BENSCHETLER  
Marc Benshetler

## Memorials and Contributions

### Meals That Matter Fund

#### In Memory of

AUDREY APPEL

Andi Becker-Arnold & Joe Arnold

BETSY LAMBERT

Carole Chasen

FLORENCE & REUBEN BROWN

Helaine & Donald Brown

CHARLOTTE SCHNELLER

Ilene Schneller & Dana

Marion

BETH KOREN

JACK FRIEDMAN

DANIEL SUSSMAN

RUTH CASTOR

Margie Chachkin

BETH KOREN

Marlene & Bob Cohen

Susan Silverstein

EDWARD SHARP

ESTHER STEINBERG

Harry & Lila Schultz

#### In Honor of

LOIS LAMBERSKY being

Woman of the Year

Helena Baron

MARLENE COHEN's Special

Birthday

Margie Chachkin

### Music Fund

#### In Memory of

IRENE GOLDSTEIN

Al & Sussie Harris

RUTH MARCUS

Dale & Paul Snyderman

AUDREY FREBOWITZ APPEL

Martin Vogel & Charlotte

Lopoten

### Natan Luehrmann-Cowen Jr. Choir Endowment Fund

#### In Memory of

LEV RYAN SNYDERMAN

Dale & Paul Snyderman

### Prayerbook Fund

#### In Memory of

FREDA TARABAR

Marty Tarabar

### Reuben R. Wolfert Memorial Fund for Scholastic Excellence

#### In Memory of

BETH KOREN

Marian Wolfert & Family

#### In Appreciation of

AVIS TITCHER

LORI MOTIS

DEB STEINBERG

FAYE BENSHTLER

CAROLE CHASEN

Marian Wolfert

#### Congratulations to

LOIS LAMBERSKY - Woman of the Year

Marian M. Wolfert

### Sisterhood Mitzvah Fund

#### In Memory of

RICHARD SABOL

Lem & Sue Tarshis

#### In Honor of

LOIS LAMBERSKY being named Sisterhood Woman of the year

Dana Marion

#### Mazel Tov to

EMANUEL & LOUISA

BENSHTLER

Marc Benshtler

### Yahrzeit Fund

#### In Memory of

HERMAN MERMELSTEIN

Alan & Bonnie Baseman

VIOLA SATINSKY

Barbara & Michael

Perilstein

NATHAN CRIGGER

Beth & Bernie Johl

CELIA ESMARK

Cindi & Vincent Pasceri

MAX MILTON KNAPP

LENA KNAPP

MAX BLUME

Earl & Toby Zipin

MORRIS SHAPIRO

Edie & Samuel Newman & Family

YETTA SCHNELLER

Ilene Schneller & Dana

Marion

SAMUEL MARGOLIS

Ina Goodman

HARRY OKUN

LEAH URY

MICHAEL SILVER

James & Ellen Tannenbaum

LOUIS SHTASEL

Jean Soll

JAMES D. ORTNER

Jeffrey & Susan Asch

RUTH CASTOR

Jennifer & Josh Horvitz

HAROLD "BUDDY" DARLING

Judy & Jonathan Beck

ELAINE SEIDMAN

Larry & Bonnie Seidman

SHIRLEY CAMP

Neen Davis

SIDNEY RAVITCH

JOSEPH STERNBERG

Nina & Robert Sternberg

ADELE MITTMAN

Norman & Teresa Mittman

HELEN MACKLER

JOSEPH ALEXANDER

SCOTT MACKLER

Randi & Bob Windheim

RICHARD ZIPIN

Toby Zipin

TOVA & ZELIG BERGREEN

Zahava Bar-Nir







## PLAN AHEAD FOR *peace of mind.*

**MANY OF US DON'T REALIZE HOW IMPORTANT** remembrance is to those who love us. That's why we recommend that you consider cemetery options now, before the time of need. From burial and cremation options to mausoleums and custom estates, your Dignity Memorial® professionals are here to help you create a meaningful memorial that honors your faith and traditions.

Dignity®  
MEMORIAL

✧ LIFE WELL CELEBRATED® ✧

### **ROOSEVELT**

MEMORIAL PARK

#### **TREVOSE**

[RooseveltMemorialPark.com](http://RooseveltMemorialPark.com)

215-673-7500

Leah Feldman, General Manager

### **FOREST HILLS / SHALOM**

MEMORIAL PARK

**HUNTINGDON VALLEY**

[ForestHillsShalom.com](http://ForestHillsShalom.com)

215-673-5800

Samuel Dornsky, General Manager

### **WHITEMARSH**

MEMORIAL PARK

#### **AMBLER**

[WhitemarshMemorialPark.com](http://WhitemarshMemorialPark.com)

215-646-7500

Lauren Scudieri, General Manager





*“Life is a succession of lessons which must be lived to be understood.”*

*— Helen Keller*

*Providing funeral  
counseling and  
pre-need arrangements.*

*Goldsteins' Rosenberg's  
Raphael Sacks INC.*

*Caring. Committed. Compassionate.*

**215-927-5800 • 800-622-6410**

**www.GoldsteinsFuneral.com**

*For the deaf and hard of hearing:*

**267-331-4243** (Sorenson VP)

#### **PHILADELPHIA CHAPEL**

Carl Goldstein, Supervisor

6410 N. Broad Street • Philadelphia, PA 19126

#### **SUBURBAN NORTH CHAPEL**

Bruce Goldstein, Supervisor

310 2nd Street Pike • Southampton, PA 18966

#### **ROTH-GOLDSTEINS' MEMORIAL CHAPEL LLC**

Stephen T. Collins • Mgr. Lic. No. 3355

116 Pacific Avenue • Atlantic City, NJ 08401





## Shopping On Line? You Shop. Amazon Gives to Beth Or.

Visit **smile.amazon.com** and search for **Congregation Beth Or** to designate as your charitable organization.

Once you sign up for our unique link, 0.5% of the price for all eligible purchases benefits our community.

Be sure to bookmark **smile.amazon.com** on your computer and use it each time you shop!  
Only purchases made at **smile.amazon.com** are eligible for donation.



**★ SESAME DAY CAMP**  
**★ CAMP ROCKWOOD**

**SRC**  
**SESAME ROCKWOOD CAMPS**  
FRIENDS HAPPEN HERE™

**★ ROCKWOOD ADVENTURES TEEN TRAVEL**

- Day Camp: 4 to 8 Week Sessions
- Mini-Day Option (3, 4, & 5 year olds)
- American Red Cross Swim Program
- Arts & Outdoor Adventure Activities
- Extensive Sports Program
- Great Lunches & Snacks & Much More!
- Teen Travel Program: 1 to 7 Week Options for 6th through 10th Grades
- Door-to-Door Transportation

*Offering Your Child the Finest in Caring Staff,  
Diverse Programming & Outstanding Facilities.*

Howard & Dale Batterman,  
Owners/Directors

**610.275.CAMP** **www.srdaycamps.com**

ACCREDITED

The advertisement features a collage of images showing children engaged in various activities: a boy jumping in a pool, a group of children on a roller coaster, children wearing goggles and life preservers, a boy playing basketball, a boy playing frisbee, and a group of children wearing hard hats. The background is a light blue and white pattern.

# CAMP GREEN LANE

Located in Green Lane, PA

Experts in creating memories and friendships that last a lifetime — since 1926.

Exciting special events and out-of-camp trips!



Become a part of our Camp Green Lane family!

215-234-9211

info@greenlane.com • www.greenlane.com

Melissa and Jay Freedman and Rene and Adam Weiner  
Owners/Directors



**Independent Senior Living Advisors**

**S<sup>3</sup>LIVING**  
REAL ESTATE

**THINKING ABOUT –**

- Moving?
- Moving to Independent Senior Living?
- Selling your home?

**THINK ABOUT –**  
**S<sup>3</sup>Living** **Strategic Senior Solutions**

**S<sup>3</sup>Living** helps Active Adults find the perfect 55+ Community or Life Plan Community (CRRC).

**S<sup>3</sup>Living** represents **YOU**, not the communities. We will recommend the best solution to meet your individual needs.

Call the Delaware Valley's leading expert on Independent Senior Living

**David Reibstein, President**  
**215-870-7362**  
Call today for a free consultation  
**S3Living.com**

**MID PENN BANK<sup>®</sup>**

1-866-642-7736 | midpennbank.com

Member FDIC



# CAMP AMERICA DAY CAMP



*"Creating life-long friendships since summer 1967"*

[www.camp-america.com](http://www.camp-america.com)

215-822-6313



**Fun • Friendship • Forever**

[www.elbowlane.com](http://www.elbowlane.com)

215-343-2120



ORTHODONTICS

[www.bracesdocs.com](http://www.bracesdocs.com)

Doylestown  
215.238.5301

Glenside  
215.885.6020

Perkasie  
215.257.5331



**Rhonda & Larry Rosenthal  
& The Rosenthal Group**  
Experience Makes the Difference



Fox Roach Realtors  
721 Skippack Pike, Suite 1  
Blue Bell, PA 19422  
215-432-5610  
[RhondaLRosenthal@gmail.com](mailto:RhondaLRosenthal@gmail.com)  
[RhondaRosenthal.com](http://RhondaRosenthal.com)



**BERKSHIRE  
HATHAWAY**  
HomeServices

**G**reat smiles  
begin with...  
**Dr. Jamie  
Goodreau**  
Specialist in Orthodontics



- Certified Invisalign Orthodontist
- Treatment of Children & Adults
- TMJ Treatment

Call today for a  
**FREE Consultation!**  
(215) 997-0200  
[drgoodreau.com](http://drgoodreau.com)

**Affordable  
Payment Plans**

*Now Participating  
With Many Major  
Insurance Companies*

**LOCATION:**  
HighPoint Business Center  
1300 Horizon Drive  
Suite 117  
Chalfont, PA 18914





## Opening Mid 2021 Joseph Levine & Sons Blue Bell, PA

During the construction phase, any family making advance funeral planning for the use of this facility, will be provided a credit towards chapel services (Blue Bell location only). A funeral director from our staff can meet with you in the comfort of your home or any of our offices. If pre-arrangements already exist with other establishments, you may be able to transfer them to our firm. Since 1883, a Levine family member or one of our funeral directors are always available to answer any of your questions or concerns.

By fulfilling a promise to the Montgomery County community, our newest facility conveniently located in the heart of Blue Bell, PA, will feature modern Memorial Chapels on just under 5 acres of land.

# JOSEPH *Levine* & SONS

SERVICE • TRADITION • DIGNITY  
[www.levinefuneral.com](http://www.levinefuneral.com)

### With both a large and small chapel the funeral home will feature:

- Flexible event space with separate reception room for catered family gatherings
- State-of-the art audio and video equipment
- Funeral service webcasting availability
- Parking for almost 200 vehicles
- Private arrangement offices and family rooms
- Minutes away from the PA Turnpike, Route 476 (Blue Route) and Route 202

#### Joseph Levine & Sons, Inc.

Jonathon D. Levine, Supervisor  
4737 Street Road  
Trevose, PA 19053  
(215) 942-4700

#### Joseph Levine & Sons, Inc.

Brian M. Levine, Supervisor  
2811 West Chester Pike  
Broomall, PA 19008  
(610) 325-2000

#### Haym Salomon Memorial Park

Adam D. Levine  
A Levine Family Company  
200 Moores Road  
Frazer, Pa 19355  
610.644.1100





## LIVE YOUR BEST LIFE

### Experience the Barbara Brodsky Suites at Lankenau Medical Center

**You value knowledge. You value exceptional medical care. You value privacy.**

When you need to be in the hospital, you can find exceptional medical care in an elegant healing environment at Lankenau Medical Center, part of Main Line Health. During your stay in the artfully appointed Barbara Brodsky Suites, you will have a personal concierge to see to your needs, deluxe amenities to make your stay more comfortable, chef-prepared gourmet meals, and private living and dining areas for you and your loved ones. It's these extras that create an incomparable experience.



To see a virtual tour of the Barbara Brodsky Suites, visit [mainlinehealth.org/brodsky](http://mainlinehealth.org/brodsky). To check availability, call 484.476.6180 or email [BrodskySuites@mlhs.org](mailto:BrodskySuites@mlhs.org).





# Beth Or Spotlight

January-February 2022 | Volume 66, Issue 3 | Tevet-Sh'vat-Adar 1

239 Welsh Road, Maple Glen, PA 19002

Phone: 215-646-5806 | Fax: 215-646-0173 | Website: [www.bethor.org](http://www.bethor.org)

Senior Rabbi ..... Gregory S. Marx  
 Associate Rabbi ..... Jason Bonder  
 Cantor ..... David Green  
 Adjunct Cantor/Jr. Choir Director ..... Jaime Murley  
 Executive Director ..... Amy S. Abrams  
 Director of Religious School ..... Aaron Nielsenshultz  
 Early Childhood Director ..... Sara Baum  
 Asst. Early Childhood Director ..... Sharon Carlin  
 Director of Accounting ..... Suzanne Diamond  
 Director of Marketing & Communications ..... Judy Trias  
 Director of Member/Youth Engagement ..... Jillian Peskin  
 Youth Engagement Advisor ..... Rachel Shapiro

Executive Director Emerita ..... Elizabeth L. Hirsch, F.T.A.  
 President ..... Gwen Silverstein  
 Vice President ..... Leslie Weiss  
 Vice President ..... Jeffrey Green  
 Vice President ..... Alyson Caplan  
 Treasurer ..... Evan Segal  
 Assistant Treasurer ..... Doug Burtnick  
 Parliamentarian ..... Jennie Nerenberg  
 Secretary ..... Lisa Goldoor  
 Brotherhood President ..... Doug Burtnick  
 Sisterhood President ..... Melisa Lubinski  
 Beth Or Spotlight Editors ..... Ellen Werther/Judy Trias



## Are you or someone you know interested in working with young children?

The Zipporah S. Abramson Center for Early Childhood Education (CECE) is a top-rated preschool with a warm, wonderful and dedicated staff caring for lovely and inquisitive children.

**We have immediate openings for full-time, part-time and substitute teachers to join us in our mission of instilling a love of learning.**

The CECE includes children 3-months - K and is based on the belief that a child's development in the first years is crucial for later development and success. Our program addresses the needs of young children and provides a rich curriculum that works for the whole of the child.

- Good salary and excellent benefits
- Experience in Early Childhood education is preferred
- Must be 18 years or older
- Flexible schedules available

**CONTACT CECE DIRECTOR, SARA BAUM, [SBAUM@BETHOR.ORG](mailto:SBAUM@BETHOR.ORG) for additional information and to set up an interview**

