



Tu B'Shvat & February 2021
Tevet - Adar 5781

Issue #3



Beth Israel Congregation

HASHALIACH

Tu B'Shvat at Beth Israel



Wednesday, January 27, 6:30 p.m.
Tu B'Shvat Seder

Join Rav Nadav for a Zoom Tu B'Shvat Seder celebrating the New Year for the trees, and our primal, moral, and mystical connection to the Earth. The Zoom link can

be found on the BIC website (www.bethisrael-aa.org).

Friday, January 29, 6:00 p.m.

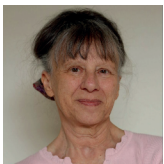
Saturday, January 30, 9:30 a.m.

Green Team Shabbat

Beth Israel's Green Team will be joining the end of Tot Shabbat services on Friday to share Tu B'Shvat activities. They will also be taking part in leading Kabbalat Shabbat services for the congregation. At Shabbat morning services on Saturday, January 30, longtime Green Team member Diane Wilson will be giving the D'var Torah.

**Living Room Lectures: Life, Love, and Art:
Alfred Stieglitz and Georgia O'Keeffe Presented
by Wendy Evans**

Sunday, February 14, 1:00 p.m.



Join Wendy Evans for a story of art and passion. When Alfred Stieglitz and Georgia O'Keeffe met, he was a famous photographer and gallery owner, she was a young unknown art teacher. This May-December couple would grow close, have a huge impact on each other's art and life, then grow apart. We'll trace their story while looking at Stieglitz's photographs and O'Keeffe's paintings. Register on the Beth Israel website.

Living Room Lectures is a partnership of Beth Israel Congregation and the Ann Arbor JCC.



Quiz Night - Virtual Edition

Saturday, February 13, 8:00 p.m.

Quiz Night - Virtual Edition is coming to a computer near you! Pre-registration is required. This will be a test of your socially distanced trivia skills, so grab a pen and paper, and test your knowledge. Snack packs are available for purchase for \$5.00 each. Register on the BIC website (www.bethisrael-aa.org).



Zoom Purim Carnival for Kids

Thursday, February 25, 6:00 p.m.

Children in kindergarten through 7th grade are invited to participate in a pick-your-own-Zoom-rooms Purim carnival! Each Zoom room will have different activities to help get us in the Purim spirit of fun and joy. Kids will be prompted to change rooms periodically, so they can try different activities. Costumes encouraged. Register on the BIC website.

**Musical Purim with Neil Alexander
and A Live Band**

Thursday, February 25, 6:30 p.m.

Grab a noisemaker (maybe a box of macaroni), fire up the big screen TV and the home audio speakers (if you have them), and join Neil Alexander, Rabbi Caine and a live band for a Megillah and Live Music special Beth Israel Musical YouTube Purim.

TO OUR CONGREGANTS



A Message from Rabbi Nadav Caine

Exodus's Gift of Theological Awareness

Jews rarely talk with each other about "what God is." We're rightly suspicious of it. Rabbinic tradition reminded us that our language uses human categories to talk about the Divine, which leads to theological error since God is not like human beings. The more we talk about what God is, rather than what God wants, the more we are liable to error.

Unfortunately we run into the same risk by *not* talking about what God is, because then we harbor the same mental errors without exposing them to scrutiny. We secretly think that a proper Jew believes the universe was created in six human days and that He dwells on a celestial throne like a King deciding when to intervene in the course of nature. Consequently many Jews describe themselves as atheists, which is not what our tradition intended.

Sefer Shemot (Exodus) is the most theological book of the Torah: God professes God's name/essence at the Burning Bush, reveals God's presence in the world to everyone through the plagues, and reveals God's intentions through Sinai. When we read about the plagues, and we don't discuss what we think God is, it's natural to harbor the kinds of distinctions that lead to atheism. We are liable to think that it means God is a supernatural force who sometimes chooses to act in the world. (The rest of the time God must be uninterested?) If natural causes can be discerned for the plagues, then theism is untrue. What is an alternative way of understanding the lesson of God's self-revealing through the plagues?

In his commentary on the Torah, the Spanish rabbi Bahya ben Asher ibn Halawa (1255–1340), known as Rabbeinu Bahya, explains that God is "the hand that directs **all** of the phenomena of the world which exercise their influence on our lives in one form or another." **Our theological error, Rabbeinu**

Bahya argues, is when we change "all" to "some."

It's not that God causes some things and not others: God is the System of causes and effects in which we dwell. The plagues illustrate God as the System of interconnected causes, like an ecosystem. Our kids learn about this kind of system behavior in school when they do assignments on micro and macro biomes. When one part is thrown out of balance (like a plague affecting the whole), the whole system goes out of balance and everything is affected. Fortunately, ecosystems and microbiomes normally self-correct. They seek what the mystical rabbis called "*Tiferet*," homeostasis. Bodies and ecosystems naturally heal. This is the imprint of God on them. It's not that God chooses to heal one person but not another. That is the error of assuming God chooses to heal some and not others, rather than seeing God's behavior as the healing process itself. The angel Rafael - the extension of God as the healing force throughout Creation - doesn't make human-like choices about intervention, but is the imprint on us of the healing process, the direction toward system self-healing. Evil is a cascade reaction that disrupts and destroys the system. The way the System works is that each of our actions has massive reverberations within our system. They can lead to wholeness and harmony (*shalom*) or they can lead to disruption and sickness (*cheit*, sin).

There are several theories of how the plagues illustrate chain reaction within a system. In one hypothesis, the plagues represent the chain reaction caused by an aberrant El Niño. Another postulates that a torrential overflow brought reddish silt and freshwater flagellates to the Nile Delta, along with anthrax spores. Another says it began with a red algae plume. The theories all agree on one thing: each successive "plague" is part of a chain reaction that plays out within ecological systems. An oxygenless Nile causes death and frog exodus. Rotting frog carcasses attract vermin and their lice, then fly swarms, followed by cattle disease, and so on. In an uncanny coincidence, plagues like COVID-19 and its predecessors Huntavirus and H1N1 swine

(Cont'd, See Rabbi Caine on Page 4)

TO OUR CONGREGANTS

BOARD OF DIRECTORS

DEBORAH BALL

President

972-4793

deborahball@gmail.com

BOB BLUMENTHAL

Immediate Past President

846-1649

robert.blumenthal@utoledo.edu

ROBIN AXELROD

Executive Vice President

395-9864

robin.axelrod@gmail.com

DIANE KAPLAN VINOKUR

Vice President of Finance

973-6757, dkv@umich.edu

CAREY WEXLER SHERMAN

Education Vice President

(612) 220-5529

careyws@umich.edu

PRUDENCE ROSENTHAL

Programs Vice President

395-0203

Rosenthalprudence@gmail.com

HARVEY MICHAELS

Religious Affairs Vice President

255-4952

hmmichaels@gmail.com

HARRIET BAKALAR

Treasurer

646-4639, hbakalar@umich.edu

RUTH KRAUT

Communications Secretary

649-2401, ruthkraut@gmail.com

AARON WILLIS

Recording Secretary

(202) 744-1444

aarwillis@gmail.com

MEMBERS AT LARGE

DAVID ADLER

955-3107

adlerda@umich.edu

RUTH BARDENSTEIN

662-5762

ruthbpc@sbcglobal.net

MARK DASKIN

677-3008

msdaskin@gmail.com

MARIE-ADELE KRESS

(301) 704-6760

marieadele.kress@gmail.com

JASON SCHWALB

(313) 598-5910

jmschwalb@yahoo.com



President's Perspective

Deborah Ball

As we enter 2021, I wish you good health, strength to manage the different challenges you face, and times of peace. I have written over the last few months about the importance of our community and the imperative we each have to contribute to, sustain, and draw on our collective strengths and comforts. In my role as president, I am seeing with new eyes and new appreciation all that the Beth Israel congregation and staff are. I see also all we can grow to be together as we learn from and through these times.

We have a wonderful set of Board members this year who steadily volunteer their time, expertise, and commitment to our community. I am grateful to work with them: David Adler, Robin Axelrod, Harriet Bakalar, Ruth Bardenstein, Bob Blumenthal, Mark Daskin, Ruth Kraut, Marie-Adele Kress, Harvey Michaels, Prue Rosenthal, Jason Schwalb, Carey Wexler Sherman, Diane Vinokur, and Aaron Willis, and ex officio, Rabbi Caine and Beth Jarvis. To take to heart the holiness of this work, we are inspired by the words of Rabbi Yirmiyah, who taught, "The one occupied with the needs of the community is like one who is occupied with matters of Torah (Talmud Yerushalmi, Brakhot 5:1). To be mindful of the responsibilities of our roles, we begin each Board meeting with a prayer: "Praised are you, Adonai our God, Ruler of the universe, who has sanctified us with Your commandments, and commanded us to occupy ourselves with the needs of the community." There are dozens of other congregants, too many to name here, who serve as members of our committees and who volunteer for programs, activities, and member engagement and we owe them a debt of gratitude as well.

I want to bring you up to date on some of the main things on which the Board has been working. In this time of Covid, homebound and grounded as we are, we are taking the opportunity of time to carry out forward-looking work for our congregation. We are stepping back and continuing work we began last winter to shape a vision for Beth Israel for the next three to five years. This is an effort that will involve and include the congregation. Coordinated with this vision-setting process, we are also working in subgroups to analyze the congregation's financial structure and budget with the goal of developing a sustainable financial model that is aligned with and supports where we are going as a congregation—who and what we want to be. One priority as we examine our budget structure, we recognize the importance of giving, and we have resolved to develop a systematic and caring approach to thanking our donors and stewarding our generous contributors. Related to vision-setting, we will also be considering explicitly and listening systematically to identify and articulate what you as a community want from our religious school, and what are the steps we need to take to develop toward that. Significantly, in Rabbi Caine's third year as our rabbi, we carried out the first rabbi evaluation that Beth Israel has done in over 20 years. Over 100 members, sampled across the congregation, provided

(Cont'd, See President on Page 4)

TO OUR CONGREGANTS

(President cont'd from page 3)

feedback and comments, and a dedicated evaluation subcommittee carefully analyzed these and produced a thoughtful and constructive report that was shared with Rabbi Caine. This fall, following guidance recommended by the United Synagogue of Conservative Judaism (USCJ), we voted unanimously to offer our rabbi a contract renewal. We are grateful to Rabbi Caine for all the effort he has expended during these challenging months, gratitude we saw strongly reflected in the overwhelmingly positive feedback that you provided on the survey about your experience of the High Holy Days. Your helpful feedback and suggestions have also been enormously appreciated. We look forward to what Rabbi Caine will bring and do as we move forward together and we are glad to be working together with him.

During this period of pause and review, planning and strategy-setting, we are so fortunate that Beth Jarvis is so capably dedicating herself to serve the congregation in the role of Director of Operations. The range of what she knows and what she does is impressive. The Board has decided not to move ahead with searching for an executive director at this moment, because that decision is wrapped up in the planning described above, and we are grateful that she is willing to continue serving in this role for now.

I look forward to once again being able to be in person, face to face, exchanging hugs, and seeing our amazing community in 2021. In the meantime, please feel free to reach out to me or to any Board member anytime with questions, suggestions, concerns, or affirmations. I can be reached at 734-972-4793 or at deborahlbball@gmail.com.

L'shalom,

Deborah Loewenberg Ball

Zoom Links and Passwords

All Zoom links are available on the Beth Israel website (www.bethisrael-aa.org). Passwords are required for all services, classes, and events. Email office@bethisrael-aa.org for the passwords.

(Rabbi Caine cont'd from page 2)

flu, originate when humans encroach on the habitat of wild animals (plague 4) - most often to raise livestock for the increasing appetite for meat consumption worldwide - leading to the communication of wild animal virus to vermin and livestock (plague 5) and then to humans. In another way, we are seeing that a civilization based on inequity and slavery will eventually destroy itself over time. The short view (Pharaoh's) is of greatness and achievement; the long view (God's) is to join other pretenders of the dustbin of history (a recurring theme in the Rabbinic midrash collections): the Jews are "still standing."

Could God's essence be connected to this observation? Could "what God is" be answered by "the system of interconnected causes this is not part of the universe, but is the universe itself?" This is essentially the answer the Kabbalistic mystical rabbis offered, even seeing the interconnected system of causes and effects as an image of human body, since our own body is a complex system of causes and effects that nevertheless comes together, when one is alive, into a unity that is greater than the sum of its parts. That unity makes us alive. That unity makes the universe "alive." It's that "collective unity" that is walking down the street, that is making memories, that is thinking and feeling: the collective unity of all kinds of primordial microorganisms (from mitochondrial organelles to e-coli bacteria collective) that came together to make an ecosystem that behaves as one, that lives and dies as one.

In this model, atheism has nothing to do with one's speculative beliefs about whether or not God sits on a throne in heaven. The Torah's concern is not that we should "believe in the existence of God," it's that we should not behave in such a way that denies God. Do human beings really deny the ways ecosystems work, and that human beings are more ecosystems than a simple I? Yes, we behave all the time in ways that deny our ecosystem nature. Do human beings deny chain reactions within large systems? Actually, yes, all the time. People consider their moral faults to really only affect their own lives. (The sacrifices of Leviticus, by contrast, are largely based on the idea that one's

TO OUR CONGREGANTS

individual behavior invisibly affects the lives of others we may never meet but who share our system.) People continue to buy single-use plastics that are not recycled without thought to its consequences, or pans, food containers, and clothing that integrate the forever chemicals of PFAS. As long as they don't see immediate consequences, they do not see a reason to change their behavior. When I lived in San Diego, year after year we'd witness the savagery of drought and wildfires, and then if we got one wet winter, everyone seemed to behave as if the drought was over and life could continue as usual. This is what it means that Pharaoh's heart continues to harden. As soon as one plague recedes, Pharaoh goes back to business as usual in denying God. We do this all the time.

Theology in Torah is not a conversation that takes place at a dinner party or by social media post. Exodus is calling us to a higher theological awareness, one that informs our very understanding of ourselves and the world we live in. How we behave shows our theological awareness. Torah is teaching us that we have the special gift of foreknowledge, of understanding the system that all life shares as God, of recognizing that every action (or inaction) has a ripple effect on the System and on the future. When we rise to that higher awareness, we make ourselves ready for *mitzvah*, for responsibility, for our power over the future.

(An abbreviated version of this column appeared in the Detroit Jewish News.)

Do you need to set up an appointment, visit, or phone call with Rav Nadav?
Email seerabbi@bethisrael-aa.org.

Bar Mitzvah Invitations



Ali & Mat Reingold invite the congregation to join them for services on Shabbat, February 6, Parashat Yitro, when their son, Jordan Reingold, is called to the Torah as a Bar Mitzvah.

Intro to Judaism with Rav Nadav **Sunday, Feb. 7 & 21, 1:00 p.m.**

Though directed at people who are considering conversion, this serious examination of the main dimensions of Judaism -from mysticism to Talmud to Jewish Holidays and rituals - is open to anyone who wants to deepen their Jewish literacy. This course is open to members and non-members. Contact the office for details.

From Electric Cars to Panera: **Contemporary Issues in Jewish Law** **Lunch N Learn Following Shabbat Services** **Bi-weekly Beginning Sat. Feb. 20** **11:45 a.m.**

From the kashrut of eating in restaurants to electric cars and Zoom on Shabbat, from alternative haftarot to musical instruments on Shabbat, Rabbi Caine brings traditional Jewish legal codes and responsa to have us consider "Jewish Law" thoughtfully and elucidate the issues of living Jewishly in our modern lives. Biweekly (through May) following Saturday services on February 20, March 6 and 20, April 3 and 17, and May 1 and 15.

Talmud Study with Rabbi Dobrusin **Mon., Feb. 1, 8, 15 & 22, 3:30 p.m.**

Rabbi Dobrusin will be facilitating a Talmud class online on Monday afternoons from 3:30-4:30. While we will read the Hebrew/Aramaic text, translations are available and all discussions will be in English. All are welcome to join regardless of the level of your familiarity with Hebrew.

Pirke Avot: Teachings of the Sages **Thurs., Jan. 28, Feb. 4, 11, 18 & 25, 5 p.m.**

Rabbi Dobrusin facilitates "Zoom" discussions on the classic Rabbinic text: Pirke Avot. While the title is usually translated as "Teachings of the Sages", a more interesting translation is "Chapters of Fundamental Principles." Pirke Avot consists of short rabbinic statements concerning ethics, faith and interpersonal relationships. Reading Pirke Avot helps us focus on the values and principles which guide our lives. We will study the text in English referring occasionally to the Hebrew. The text can be found in the Shabbat morning Sim Shalom siddur.

YOUTH EDUCATION



Mira Sussman
Director of Education

(734) 769-2041

The winter solstice is past, Chanukah is over, 2021 has begun, and vaccines for COVID are being distributed - it truly feels like 2021 is a fresh start. It's astonishing that we are planning for Purim already, which was the last time many of us gathered in person!

Beth Israel Religious School will continue to meet virtually for the remainder of the school year. While we miss seeing each other in person, we are proud that we are still learning together! BIRS families were surveyed in late November 2020 to see how they felt about BIRS, and the overall responses let us know that, by and large, the school is on the right track. 85% of respondents say their experience at BIRS is positive; 78.6% of respondents said that class lengths were just right, they overall appreciate the amount and frequency of school communication, and respondents are generally happy with the amount of homework that students are assigned.

We are very proud of our 85% attendance record September-December. *Kol Hakavod* (congratulations) to our students and parents, for demonstrating their commitments to Jewish education.

In 2020 we began grade-level Shabbat Oneg Zooms, which we look forward to continuing in 2021. Each group meets for half an hour to light candles and say the blessings to welcome Shabbat. These smaller sessions allow students and their families to interact with each other, and share family songs, traditions, and stories. Next up are Oneg gatherings on January 8th for families with students in Kitah Daled/Hei (4th-5th grades), Kitah Vav (6th grade) on January 22nd, Kitah Zayin (7th grade) on February 5th, and Kitah Chet (8th grade) on February 19th.

Save the date for Teen Led Shabbat on March 20th! This new tradition is a fantastic opportunity to highlight our incredible teenagers and encourage them to participate in leading tefillot. Post-bar/bat mitzvah students are encouraged to contact Mira Sussman to participate; Torah/Haftarah recordings are available.

Tot Shabbat with the Caine Family **Friday, January 29, February 12 & 26** **5:30 p.m.**

Join Rav Nadav, Lynne, Merav, & Ziva for Kabbalat Tot Shabbat by Zoom! Bring in Shabbat with music, dancing, candle lighting, and kiddush! Invite your friends! If you are new to the program and need



your special Tot Shabbat bag, please contact us at engage@bethisrael-aa.org. Zoom links are available on the Beth Israel website at www.bethisrael-aa.org.

Monthly Lego Contest **Sunday, February 7, 4:00 p.m.**

Create something and compete against other LEGO architects. Share your creation and win a prize if your creation is the group favorite. This month we read in the Torah about Moses going up Mt. Sinai and receiving the 10 Commandments. Portray this scene. Register on the BIC website. For families with children in K - 5th grade.

Family Game Night **Sunday, February 14, 5:00 p.m.**

Over the last 3 months, families have come together online to challenge each other through trivia! Families receive supplies and instructions to play new and exciting games with their families at home. The online component is 30 minutes or less. Family Game Night is geared towards families with children in grades k - 6. So far, over 50 families have participated in the program. Register on the BIC website.



BETH ISRAEL COMMUNITY

World Wide Wrap

Sunday, February 7, 10:00 a.m.

Join us by Zoon for a Sunday morning minyan wearing our tefillin. We will spend the first five minutes encouraging and advising those who are learning how to wrap.

Sign-up Online to Participate in Shabbat Morning Services!

In addition to signing up through our ritual assistant (and service concierge) Ron Sussman (ron@bethisrael-aa.org), you now have the option of signing up for service parts directly through our new on-line Torahreaders.net service. Register on Torahreaders.net for our Beth Israel Torah Team. Details can be found on our website under "Engage --> Torah Reading" or www.bethisrael-aa.org/torah-reading.html

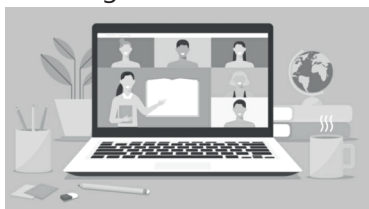
ScholarStream and Other Online Learning Resources

There are so many outstanding resources for learning beyond our walls online. These are but a few suggestions for resources.

ScholarStream: Beth Israel is a sponsor of ScholarStream, a series of courses from top scholars of the Conservative movement from its leading institutions to engage deeply with our texts and traditions.

- Tuesdays at 8:00 p.m. you can study teshuvot/responsa with CJLS on *How We Navigate Ethical Dilemmas and Reshape Rituals to Draw Us Closer to God*.
- Wednesdays at 10:00 p.m. study with Ziegler Faculty on *The Stories We Tell: Revealing Ourselves in Ancient Narratives*.

You will also find links to a variety of other online learning resources such as the Jewish Theological Seminary, American Jewish University, Hadar, and The Conservative Yeshivah in Jerusalem. Offerings are at www.bethisrael-aa.org/online-resources.html.



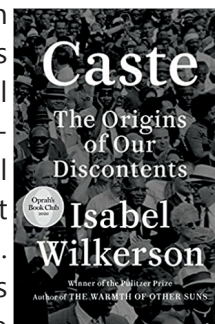
SOCIAL ACTION
COMMITTEE
Beth Israel Congregation



In appreciation of Beth Israel's past, present, and future volunteers, the Social Action Committee has made a donation to Jewish Family Services.

Curl Up with a Great Book!

The Beth Israel Social Action Committee Book Group, which is open to all Beth Israel members, will discuss **Caste** by Pulitzer Prize-winning, best selling author Isabel Wilkerson on March 14 and 21, at 11:00 a.m. each of those days. Everyone interested in this compelling book is encouraged to participate. The first discussion will be facilitated to help us take a deep dive into the book, and the second will continue among participants. To help defray costs, Book Group participants are asked to donate up to \$10 to SAC. Register on the BIC website (See Social Action Book Group under Engage).



Book Group participants can purchase the book at the deeply discounted price of \$18 (which includes tax), due to a discount from Ann Arbor's, Bookbound Bookstore, and a generous donation from a Beth Israel member. When you purchase your copy from Bookbound, mention Beth Israel to get the discount. Additionally, the Beth Israel library will acquire a couple lending copies. Note that Bookbound will be on winter break from January 31 through February 8; otherwise, they are open Tuesdays through Saturdays. If you have questions, please contact Deborah Greene at greenedm@umich.edu.

TODAH RABBAH

Mazal Tov to...

Ruth Behar & David Frye on the birth of their granddaughter, Mila Behar-Lazare, daughter of Gabriel Frye-Behar & Sasha Lazare.

Laura Mordis-Jackson on the birth of her grandson, Asher Allen Jackson, son of Andrew Jackson & Jessica Lewis.

Condolences to...

Karlan Bender on the death of his brother, Darwin Bender.

The family of **Rena Bloch** on her death.

Debra Christein on the death of her mother, Doris Christein.

Sharon Goldberg on the death of her father, Harvey Danowitz.

Lori Greenberg and **Ronit Ajlen** on the death of husband and father, Arie Greenberg.

Todd Kirshner on the death of his mother, Roberta Kirshner.

Barbara Kramer on the death of her father, Mitchell S. Kramer.

Ellyne Monto on the death of her brother, Barry Polsky.

David Pinsky and Debra Pinals on the death of their father, Dr. Stanley Theodore (Ted) Pinsky.

Marcille K. Pollack on the death of her husband, Irwin Pollack.

Gary Rochman on the death of his father, Milt Rochman.

Have something you would like to appear in HaShaliach?

The deadline for the March/April issue is Wednesday, February 17. Submissions can be sent to Beth Jarvis at bjarvis@bethisrael-aa.org.

Share Your Simcha With Us

Has your family had a simcha that you would like to share with the congregation? Contact the office at bjarvis@bethisrael-aa.org or 665-9897 and we would be happy to announce it in the next issue of the Hashaliach.

Contributions to Beth Israel Congregation

The Board and Staff of Beth Israel wish to extend our sincere thanks to all those whose contributions help the synagogue thrive.

Please specify where you would like your funds to go. Those being honored will receive an acknowledgement of your generosity.

The minimum donation to be listed in HaShaliach remains \$5. **However, a minimum donation of \$10 is required to have an acknowledgement mailed to the honoree or family of the deceased.**

In addition, larger contributions will be designated:

\$50 - \$99 Chazak (*)

\$100 - \$499 Koach (**)

\$500 - \$999 Giber (***)

\$1000 and over Maccabee (****)

Contributions listed below are as of 1/27/2021. Contributions received after that date will be listed in the next HaShaliach.

BETH ISRAEL RELIGIOUS SCHOOL DONATIONS

Jean Clemes in memory of her mother, **Helen Goren**, on her yahrzeit.

Marc Sussman & Lynne Avadenka in honor of **Lonnie & Ronnie Sussman's 50th anniversary.**

GENERAL DONATIONS

Margery Adelson in memory of her husband, **Joseph B. Adelson**, and her mother, **Greta Gross**, on their yahrzeits.**

Neil Alexander in memory of his parents, **Chayim Alexander** and **Ziwa Alexander Katz**, on their yahrzeits.

Robin & Brad Axelrod in memory of **Gloria Greenfield**, mother of Marcie Greenfield.

Deborah, Richard, Joshua, and Jacob Ball, and Sarah, Josh, Owen, Emme, and Lucy Hakala in memory of their father and grandfather, **Gerhard Loewenberg**, on the occasion of his first yahrzeit, and with deep appreciation for the entire **Beth Israel community** and especially the **daily minyan** over the past year.**

Ruth Bardenstein & Jim Roll in memory of **Gloria Greenfield**, mother of Marcie Greenfield.**

Ruth Behar & David Frye in honor of the birth of their grandchild, **Mila Behar-Lazare**, daughter of Gabriel Frye-Behar & Sasha Lazare.**

Ruth Campbell in appreciation of **Neil Alexander**.**

Bob & Dennie Carbeck in appreciation of **Beth Jarvis**.

Carl Cohen in appreciation of **Beth Israel Congregation**.**

Evan Cohen & Deborah Keller-Cohen in memory of **Gloria Greenfield**, mother of Marcie Greenfield.

Zelig Cutler in memory of his father, **Schmuel (Samuel) Cutler**, and his father-in-law, **Rachmiel (Morris) Bernstein**, on their yahrzeits.*

Andrew Fanta & Valerie Mills in memory of their son, **Jacob Fanta**, on his yahrzeit.

Conrad Foster in memory of his grandmother, **Jennie Foster**, on her yahrzeit.

Rita Gelman in memory of her mother, **Beatrice Smolker**, and **Rose & Isadore Eisenberg**, grandparents of Chuck (z"l) Gelman on their yahrzeits; in memory of **Gloria Greenfield**, mother of Marcie Greenfield; wishing Mazal Tov to **Elaine & Barry Margolis** on the marriage of their daughter Erin Margolis & Dan Tochen; wishing Mazal Tov to **Murray & Susan Rebner** on the birth of their grandsons, Harris and Shane Rebner.*

Joshua Goldblatt & Jessamyn Ressler-Maerlender in honor of **Rav Nadav, Beth, Amanda, Sam, and Ron** for helping make Marcus's Bar Mitzvah wonderful.**

TODAH RABBAH

Ellen & Michael Goldman in honor of the **Goldman Family** - Joshua, Julie, Jason and Rebecca.**

Rachel Goldstein, Aaron Willis, Lila, and Yael in honor of **Marcus Goldblatt** on the simcha of his Bar Mitzvah.

Susan & Barry Gross in memory of **Roberta Kirshner**, mother of Todd Kirshner, and **Ted Pinsky**, father of David Pinsky.

Lauren Katz & Joel Rubenstein in memory of **Darwin Bender**, brother of Karlan Bender.

Barbara Kramer & Steven Acker in memory of **Milt Rochman**, father of Gary Rochman; in memory of **Maida Portnoy**, mother of Rachel Portnoy; in memory of **Mark Brian Eichner**, father of Adam Eichner.**

Charles Krasnow in appreciation of **Beth Israel Congregation**.**

Warren & Sandy Lada in memory of Warren's mother, **Doris Lada**, and Sandy's father, **Graham Miller**, on their yahrzeits.

Stephen & Pamela Landau in memory of Stephen's father, **Charles Landau**, on his yahrzeit.**

David & Stacy Markel in honor of **Luda & Vadim Ketslakh**.

Boris & Margaret Mordukhovich in memory of Boris's mother, **Rosa Mordukhovich**, on her yahrzeit.

Mike & Leslie Morris in appreciation of the **Rabbis, staff and everybody else** who keep the Zoom services going.***

Aviva Panush & Mitch Silverman in honor of the marriage of **Erin Margolis**, daughter of Barry & Elaine Margolis, and Dan Tochen; in honor of the birth of **Harris Benjamin & Shane Alexander**, grandsons of Susan & Murray Rebner and sons of Max & Eryn Rebner.

David & Renee Pinsky in memory of David's father, **Dr. Stanley Theodore (Ted) Pinsky**.***

Kathy & Robert Pulda in memory of **Irwin Pollack**, husband of Marcille K. Pollack.

Arlene Platt, Danielle Platt, Hallie & Zalmy Schapero in memory of **Roberta Kirshner**, beloved mother and grandmother.

Deborah Salzberg in memory of her mother, **Sally Salzberg**, on her yahrzeit.*

The Saper Family in memory of **Leonard Saper**.**

Art & Mary Schuman in memory of **Roberta Kirshner**, mother of Todd Kirshner.

Harriet Selin in loving memory of her father, **George Chudacoff**, on his yahrzeit.*

Bill Stengle in memory of his wife, **Rebecca Stengle**, on her yahrzeit.**

Richard & June Swartz in appreciation of **Beth Israel Congregation**.**

Harriet Teller in memory of her husband, **Abe Goldman**, and her father, **Nat Teller**, on their yahrzeits.

Diane Kaplan Vinokur in memory of her brother, **George Bernard Kaplan**, on his yahrzeit.**

Martin Warshaw in memory of his wife, **Alice Warshaw**, on her yahrzeit.**

Gloria & Denis Weinberg in memory of **Dr. Stanley Theodore Pinsky**, father of David Pinsky and Debra Pinals.

Nancy Weiss in memory of her husband, **Ben Weiss**, and her parents, **Florence & Morris Karch**, on their yahrzeits.**

Frances Winchell in appreciation being able to **join Zoom services** for a yahrzeit and her great- granddaughter's, **Rebecca Goldman**, baby naming.**

Lisa Yellow Eagle in memory of **Irwin Pollack**, husband of Marcille K. Pollack.*

ADULT LIBRARY FUND

Shira & Steve Klein in memory of **Gloria Greenfield**, mother of Marcie Greenfield.

BUILDING & INFRASTRUCTURE FUND

Ruth Bardenstein & Jim Roll in memory of **Milt Rochman**, father of Gary Rochman.

Alan Lampear & Anita Liberman-Lampear in memory of Alan's mother, **Madeleine (Mae) Lampear**, and Anita's father, **Murray Jay Liberman**, on their yahrzeits.*

Dr. Owen & Sheila & Family in memory of honored father and grandfather, **Charles "Chuck" Perlman**, on his yahrzeit.**

Charlene Yudowin in memory of her mother, **Ida Oventhal**, on her yahrzeit.

BUILDING RENOVATION FUND

Harvey Berman & Shelly Kovacs Berman in memory of **Dr. Stanley Theodore (Ted) Pinsky**, father of David Pinsky and Debra Pinals; in memory of **Roberta Kirshner**, mother of Todd Kirshner; in memory of **Milt Rochman**, father of Gary Rochman; in memory of **Mitchell A. Kramer**, father of Barbara Kramer; in memory of **Barry Polsky**, brother of Ellyne Monto; in memory of **Darwin Bender**, brother of Karlan Bender.*

Alan Lampear & Anita Liberman-Lampear in memory of Alan's father, **Harold Lampear**, on his yahrzeit.*

CEMETERY LANDSCAPING FUND

Pamela & Scott Harper in loving memory of **Marvin & Jean M. Solvith**.**

Laura Mordis-Jackson in memory of her parents, **Robert & Sophie Mordis**; and in honor of the birth of her grandson, **Asher Allen Jackson**, son of Andrew & Jackson & Jessica Lewis.**

CHILDCARE FUND

Sheryl L. Fagin in memory of her brother, **Randy J. Fagin**, and her grandmother, **Jennie Wopinsky**, on their yahrzeits.*

FLOWER FUND

Linda & Ronald Benson in memory of Linda's mother, **Ruth Reistman**, and Ronald's mother, **Esther Benson**, on their yahrzeits.*

Joan Kripke in appreciation of **Dr. Arnold Monto** for his work on approving the COVID-19 vaccines.

HENRY GERSHOWITZ BUILDING FUND

Haran & Nikki Rashes in memory of **Darwin Bender**, brother of Karlan Bender.

ELI LADIN ISRAEL SCHOLARSHIP FUND

Aviva Panush & Mitch Silverman in honor of the engagement of **Sophia Blumenthal**, daughter of Beth Dwoskin & Bob Blumenthal.

Harriet Selin in memory of her husband, **Marvin Selin**, on his yahrzeit.*

Aliza Shevrin in memory of her husband, **Howard Shevrin**, on his yahrzeit.*

ADA & ISIDOR FUND MARGOLIS MEMORIAL RELIGIOUS SCHOOL FUND

Barry & Elaine Margolis in memory of **Gloria Greenfield**, mother of Marcie Greenfield.

RABBI'S DISCRETIONARY FUND

Sue & Larry Adler in memory of **Michael Perlman**, brother of Owen Perlman; in memory of **Maida Portnoy**, mother of Rachel Portnoy; in memory of **Lillian Brown**, sister of Alan Fligel; in memory of **Gloria Greenfield**, mother of Marcie Greenfield.*

Brad & Robin Axelrod in memory of **Roberta Kirshner**, mother of Todd (Liz) Kirshner and grandmother of Alex (Eli) Witus, Jordan (Rachel) Kirshner, and Brent (Abby) Kirshner; in memory of **Darwin**

TODAH RABBAH

Bender, brother of Karlan Bender, brother-in-law of Linda Bender, and uncle of Jacob & Melissa, and Josh Bender; in memory of **Mitchell A. Kramer**, father of Barbara Kramer; in memory of **Barry Polsky**, brother of Ellyne Monto.

Ruth Bardenstein & Jim Roll in appreciation of all the **BIC staff** (Beth, Amanda, Sam, Michele, Mira, Ron, and Rabbi Caine) has done during this pandemic.***

Irina Borshchevskaya in appreciation of **Rabbi Dobrusin**.

Bob & Dennie Carbeck in memory of **Gloria Greenfield**, mother of Marcie Greenfield.

Julius S. Cohen in memory of his father, **Abraham Isaac Cohen**, on his yahrzeit.

Carol Finerman in memory of her beloved mother, **Edna Weil**, on her yahrzeit.**

Thea Glicksman in memory of **Thomas Brownlee**, beloved uncle of Beth Jarvis.

Barbara Goldberg in appreciation of **Rav Nadav's support** to the family and friends of Gary Rochman & Liora Rosen.

Susan & Barry Gross in memory of **Barry Polsky**, brother of Ellyne Monto, **Darwin Bender**, brother of Karlan Bender, and **Irwin Pollack**, husband of Marcille K. Pollack.*

Rabbi Richard Hirsch in appreciation of **Rabbi Caine's fine D'var Torah** on January 16th.

Eileen & Saul Hymans in memory of Saul's father, **Max Hymans**, on his yahrzeit.

Nancy Karp in memory of her grandfather, **Louis Karp**, and her niece, **Jennifer Sherr**, on their yahrzeits.

Paul & Leah Kileny in appreciation of **Rabbi Caine** for his help and support of their granddaughter Rebecca Singer's Bat Mitzvah.**

Alex, Jordan and Brent Kirshner in memory of **Roberta (Gerstein) Kirshner**, wife of Sidney Kirshner, mother of Bruce, Ron, Carla (Breitman), Todd, Drew, Corey, Rand and Rich Kirshner, and Nana to 17 grandchildren and 8 great grandchildren.**

Steve Leber & Dina Shtull in memory of **Dr. Stanley Theodore (Ted) Pinsky**, father of David Pinsky and Debra Pinals.

Marty Lindenauer in memory of his father, **Hyman Lindenauer**, on his yahrzeit.

Ellyne & Arnold Monto in memory of **Milt Rochman**, beloved father of Gary Rochman.

David & Renee Pinsky in memory of David's father, **Dr. Stanley Theodore (Ted) Pinsky**.***

The Ressler Family in memory of father and grandfather **Milton Ressler**.**

Joel Saper in appreciation of **Rabbi Caine**.****

Art & Mary Schuman in loving memory of Art's mother, **Mattie Schuman**, on her yahrzeit.*

Harriet Selin in memory of her mother, **Goldie Chudacoff**, her brother, **Edward Chudacoff**, and her mother-in-law, **Celia Selin**, on their yahrzeits.**

Merton Shill in memory of his mother, **Jennie Shill**, on her yahrzeit.*

Nancy & Sam Silver in memory of **Bruce Hern**, brother of Robert Hern.

Michael Simon & Wendy Uhlmann in memory of **Ted Pinsky**, father of David Pinsky and Debra Pinals.

Michael & Peggy Singer in honor of the wedding of **Erin Margolis**, daughter of Elaine & Barry Margolis, and Dan Tochen; Mazal Tov to **Susan & Murray Rebner** on the birth of their grandsons, Harris and Shane Rebner, sons of Eryn & Max Rebner; in memory of Michael's father, **Rudi Singer**, on his yahrzeit.

Roberta & Larry Tankanow in memory of **Bruce Hern**, brother of Bob Hern and wife of Sue Hern.

Charles Watson in memory of **Irwin Pollack**, husband of Marcille K. Pollack.*

Phyllis Werbel in memory of her father, **Erwin Isaacson**, and her mother-in-law, Ida Werbel.**

Aaron Willis & Rachel Goldman in appreciation of **Rabbi Caine**.**

Donna Winkelman & Thomas Easthope in memory of **Mitchell Kramer**, father of Barbara Kramer.

Eric & Martha Young in honor of **Sam Silver's Lifetime Achievement Award** from the Michigan Society of Hematology and Oncology.*

SELIGSON ADULT EDUCATION FUND

Joan Hartman & John Rothchild in memory of **Mitchell Kramer**, father of Barbara Kramer.*

Gail & Mark Mizruchi in appreciation of **Rabbi Dobrusin**.**

SOCIAL ACTION FUND

Cindy & Richard Frey in memory of Cindy's parents, **Leibish & Hilda Diogenes**, on their yahrzeit.**

Mitchell & Carole Rycus in memory of their parents, **Esther & Sam Israel Rycus** and **Helen & Max Lepofsky**, on their yahrzeits.**



**Allergy & Immunology
Associates
of Ann Arbor**

**P. (734) 434.3007
F. (734) 434.6212**

www.annarborallergy.com

Office Locations:

Ann Arbor • Canton • Chelsea • Novi
Brighton • West Bloomfield • Livonia

Jeffrey G. Leflein, M.D.
Benjamin J. Song, M.D.
Harvey L. Leo, M.D.
Jennifer P. DeMore, M.D.
Tara Shankar, M.D.
Claire E. Ward, M.D.

**PROTECTING SENIORS NATIONWIDE
MEDICAL ALERT SYSTEM**



\$29.95/MO

BILLED QUARTERLY

**PLUS
SPECIAL
OFFER**

**CALL NOW! 1.877.801.7772
WWW.24-7MEDALARM.COM**



NACHTLAW
Employment Law | Education Law | Criminal Defense

By your side™

**Representing executives,
physicians, business partners
and students**

(734) 663-7550

nachtlaw.com

**AVAILABLE
FOR A LIMITED TIME**

**ADVERTISE YOUR
BUSINESS HERE**

**Contact Dave Polansky to place an ad today!
dpolansky@4LPi.com or (800) 477-4574 x6326**

**Vedder
Electric**

Licensed / Insured
Commercial / Residential
(734) 662-6220
vedderelectric.com
Small Repairs Welcome!

**MARGOLIS
NURSERY** SINCE 1926
RENOVATIONS • DESIGN • CONSULTATION

COMMERCIAL, INDUSTRIAL & RESIDENTIAL
LANDSCAPING DESIGN & INSTALLATION
HYDROSEEDING
NURSERY & LANDSCAPING SUPPLIES
TREES, SHRUBS & PERENNIALS
DELIVERY & INSTALLATION
LAWN & LANDSCAPE MAINTENANCE
UNILOCK AUTHORIZED DEALER & CONTRACTOR

MARGOLISCOMPANIES.COM | 734.482.0771
9600 CHERRY HILL RD | YPSILANTI

M | LSA JEAN & SAMUEL FRANKEL
CENTER FOR JUDAIC STUDIES
UNIVERSITY OF MICHIGAN
30th David W. Belin Lecture in American Jewish Affairs

Pamela Nadell
American University

**"It Can Happen Here"
Antisemitism, Gender,
and the American Past**

Tuesday, March 31, 7:00 pm
Forum Hall, Palmer Commons
100 Washtenaw Ave, Ann Arbor
734.763.9047 • judaicstudies@umich.edu

bank of
ann arbor helps

boaa.com
MEMBER FDIC

**UPGRADE TO A
VIBRANT
ad**
Contact us for details
800-477-4574

**LUSSENDEN
PAINTING, LLC**

**Now scheduling for
Spring & Summer**

Exterior Repairs & Painting
Deck Cleaning & Staining

734-995-0715

MICHIGAN'S TOP-RATED ENTERTAINMENT COMPANY



Fun, professional, high energy entertainment for all events!

- DJ & MC Packages
- Dance Floor Lighting
- Motivational Dancers
- Bar/Bat Mitzvahs
- Weddings
- School Dances
- Parties

Web: www.stealthdjs.com Phone: 734-236-4637 Text: 734-203-0258



השליח HASHALIACH



Beth Israel Congregation

ANN ARBOR, MICHIGAN WWW.BETHISRAEL-AA.ORG

Beth Israel is a proud partner of the
Life and Legacy ® Campaign.
You can make your commitment to
Beth Israel in perpetuity.
Stocks and IRA distributions are an easy
way to make your gift. Please contact our
Director of Operations for details.

bjarvis@bethisrael-aa.org
(734) 665-9897

Candle Lighting Times		Shabbat Ends*
Fri., Jan. 27	5:25 p.m.	Sat., Jan. 30 6:27 p.m.
Fri., Feb. 5	5:33 p.m.	Sat., Feb. 6 6:34 p.m.
Fri., Feb. 12	5:42 p.m.	Sat., Feb. 13 6:43 p.m.
Fri., Feb. 19	5:51 p.m.	Sat., Feb. 20 6:52 p.m.
Fri., Feb. 26	5:59 p.m.	Sat., Feb. 27 7:01 p.m.

* - 42 minutes after sundown

BETH ISRAEL CONGREGATION
2000 WASHTENAW
ANN ARBOR, MI 48104
(734) 665-9897

Non-Profit Org.
U.S. Postage PAID
Permit No. 725
Ann Arbor, MI

Return Service Requested