

# HASHALIACH

## Inside This Issue:

- Rabbi Sharon Brous at Beth Israel
- Winter Tot Shabbat
- Aura of Kabbalat Shabbat Services
- Sweatshirt Shabbat & Cholent Kiddush
- JCOR Update
- World Wide Wrap



## Upcoming at Beth Israel

### Kabbalah Intensive I Review Session

Monday, January 8

Remaining Sessions - Mon., January 15, 22, 29

### Who Knows One? and Community Havdalah

Saturday, January 20

### ISRAEL 360 Presents Efrat Lachter

Sunday, January 28

### Camp Style Shabbat & Dinner

Friday, February 9

### Quiz Night!

Saturday, February 10



## A Message from Rabbi Nadav Caine

### Time to Join the Kabbalah Class

*It's not too late to join the Kabbalah Intensive, or make up a missed class! On January 8th, I will conduct a review of the first three sessions, and then continue with new material on January 15, 22, and 29. Materials are available by [clicking here](#).*

It's always amazed me that adult Jews carry on conversations about whether they believe in the existence of God, or (more likely) not, based on pediatric conceptions of God left over from their pre-bar/t mitzvah Jewish education. (I've been equally surprised that when Jews talk about what post-bar/t mitzvah Jewish education should be, they often wish to focus on continued skill acquisition—as if Judaism is an Olympic sport—rather than its depth as an adult wisdom practice.)

Thirty years ago and beyond, it was common practice that if an adult wanted to explore a non-pediatric conception of God, they were expected to read the extraordinarily abstract, philosophical works of Franz Rosenzweig, Hermann Cohen, Martin Buber, Abraham Joshua Heschel, and Emmanuel Levinas (or a “lite” version in, say, Neil Gillman's *Sacred Fragments*). Today we realize that was an awfully odd approach: that somehow to understand Jewish conceptions of God, one really needs to first master the non-Jews Kant, Husserl, and Heidegger so one can understand the Jewish thinkers incorporating them?

Today it's becoming more accepted that Judaism has always had its own ongoing conversation about the nature of God – one home grown and distinct from the “How is God all powerful, all knowing, and all good?” patterns of Christian theological investigation. Indeed, a conversation now at least two thousand years old

has been taking place, rooted in our own interactions with Torah and the world.

In the Kabbalah Intensive, I've been teaching this tradition. My main focus has been on how mainstream mystical interpretations are in our tradition. Does “Torah” refer to a book (or set of five books) or does it refer to the underlying structure of reality? Did the great Sages of the Talmud (say, Rabbis Akiva and Meir) ever try to experience God, and if so, how did they do so? What did the Rabbis think it meant that “Moses saw God's back” or that the elders of Israel feasted on God's presence? Is prayer more than just replacing material offerings (sacrifices) with the offering of words? If God is everywhere, but God is more some places than others, how does that work? If I'm supposed to have a direct relationship to God (and not “mediated” like in other religions), what does that look like?

In the first three sessions, I laid the groundwork for the contours of the Jewish conversation of God (and about Torah, and God's image, and the nature of Shabbat, etc.) that has been going on through Jewish classical sources and interpretations, and extended through Kabbalah. Those source-sheets and a recommended book, are available by [clicking here](#). I hope you'll consider joining the class. On January 8th, I will conduct a review of the first three sessions, and then continue with new material on January 15, 22, and 29. Come explore this challenging and provocative theological terrain together.

BETH ISRAEL CONGREGATION PRESENTS  
AN ADULT EDUCATION CLASS TAUGHT BY RAV NADAV

## KABBALAH INTENSIVE I


WINTER 2024

ALL CLASSES HELD ON MONDAYS  
UPSTAIRS AT G & S 2010

JANUARY 8TH 6-8 PM  
REVIEW SESSION

JANUARY 15, 22, 29 6:30-8

ON JANUARY 8TH, RAV NADAV  
WILL REVIEW THE MATERIAL  
FROM THE FALL SESSIONS, WITH  
THREE MORE SESSIONS  
FOLLOWING THAT BUILD ON  
THE PREVIOUS CLASSES. THIS IS  
A GREAT OPPORTUNITY TO JOIN  
THE CLASS IF YOU COULDN'T  
BEFORE!





## President's Perspective Deborah Ball

As we begin the new secular year, we also begin our reading of Shemot, the book of Exodus, in our annual cycle of Torah study. This transition holds special significance because it marks a shift from the stories of individuals struggling with the challenges of being human to the collective struggle to be a people, a nation. In *Very Near to You: Human Readings of the Torah* (2012), Avraham Burg writes that the “essence of the Book of Exodus [is] an ongoing, multifaceted confrontation between the Egyptian present, which looks insuperable, and the hazy, elusive future of Israel—between, on one hand, a regime whose foundations are fixed and unchanging, and, on the other, a perpetually vital factor that challenges and threatens the regime while searching for the next ideas that have yet to appear.” “The redemption of Israel,” he continues, “is an eternal future, driven by the hope of renewal and a gaze always directed forward” (p. 201).

Looking forward has many meanings for us as a people, as *am Yisrael* (people of Israel), as *b’nai Yisrael* (children of Israel), and, here, as Beth Israel, *beit Yisrael* (house of Israel). We look for new solutions to long-term problems—from everyday issues, to ongoing challenges, to existential struggles. How best to organize the social hall for

Illuminate, our Hanukkah party? How to ensure good sound quality in the sanctuary and online? How to ensure our financial stability and sustainability? How to support refugees in the Ann Arbor community, and how to meaningfully act for environmental sustainability? How to come together in these terribly troubling times of the war and the rise of antisemitism here and around the globe?

We also know that looking forward must be informed by looking back. “Never again,” a refrain, a mantra, that reminds us to be vigilant. As I observe the fourth Yahrzeit of my father (z”l), who, with his parents, escaped Nazi Germany, I am always aware and watchful. How do we manage to be aware of our surroundings as individuals and as a people while not yielding to excessive reactions? I continue to learn from my father’s example and his guidance over the years, how to manage in these times, how to act and react, and how I can best be a member of a community.

We see the protesters who line the streets in front of our building every Shabbat, and are reminded of our vulnerability. We are grateful for the security staff who guard our safety and that of our children at our doorways. We join with other marginalized and oppressed peoples to act on our values and principles. Growing as a people, here in this country and in Israel, is an ongoing work.

Our texts and our traditions continue to yield grounding principles and the possibilities of new imaginings. May our study of the book of Exodus during these weeks offer us insights to face our challenges. May our opportunity to come together—in events organized by the ISRAEL360

[\*\(Cont’d. See President on Page 5\)\*](#)

### BOARD OF DIRECTORS

DEBORAH BALL

President

deborahball@gmail.com

STEPHEN RUBENSTEIN

Executive Vice President

sruenst@umich.edu

WARREN LADA

Vice President for Finance and Development

ladawarren@gmail.com

RACHEL GOLDSTEIN

Vice President for Education

racheljgoldstein@gmail.com

JENNY TRAIK

Vice President for Programs

jtraig@hotmail.com

MARTHA YOUNG

Vice President for Religious Affairs

marthayoung10@gmail.com

MEIRA MILLER

Vice President for Tikkun Olam

meirabatchos@gmail.com

JASON SCHWALB

Treasurer

schwalbmd@gmail.com

SUE COWAN

Corresponding Secretary

atzuri613@gmail.com

JOHN MCLAUGHLIN

Recording Secretary

mclaughlinjm@gmail.com

### MEMBERS AT LARGE

RUTH BARDENSTEIN

ruthbpc@sbcglobal.net

MIKE FRIED

mfried@comcast.net

THEA GLICKSMAN

glicksmt@icloud.com

PRUDENCE ROSENTHAL

rosenthalprudence@gmail.com

KATIE SHELEF

kmshelef@gmail.com

VITA STRUMBA

vstrumba@gmail.com





**Gerald L. Sorokin**  
**Executive Director**

We're fortunate at Beth Israel to have a facility that's large enough and flexible enough to meet almost all of our ritual, programmatic, and administrative needs. Previous generations of BIC leaders had the vision and good sense to provide a building that has served us well for almost fifty years. But things are wearing out.

The BIC board, the House and Grounds Committee, and the Green Team have been collaborating with staff to identify areas in need of repair or replacement. We have been looking at ways to improve our facilities in line with our values of environmental sustainability, security for members and staff, and fiscal responsibility.

Here are a few projects we are currently working on:

## **HVAC & Kitchen:**

For the past few months, an engineering firm has been studying our property to assess the current condition of the heating, cooling, air flow, and kitchen equipment. To no one's surprise, most of that equipment is at or beyond its useful lifespan, and the maintenance costs are high and rising. It's time to replace it. The engineer's report found that our existing equipment was not accurately sized; we will gain efficiency by going to smaller units covering the same spaces. For the heating system, the report compares two options: (1) installing updated, more efficient versions of the same (gas-fired) equipment; (2) shifting to electric heating, with geothermal and solar systems. We are in the process of assessing up-front and long-term costs of these options.

## **Fencing:**

The playground behind Beth Israel is used frequently by children (and adults!). The problem is that anyone who wants to enter the property can simply walk in from the street, and children can easily wander away toward the busy streets. We are in the process of updating our fencing around the

property so that the playground is enclosed and accessible only from inside the synagogue building.

## **Parking & Sidewalks:**

Anyone who has driven to Beth Israel or walked into the building can attest to the deteriorating condition of the asphalt and concrete. We recently patched several pot holes in the parking lot—a useful but temporary measure. Several sections of sidewalk are badly cracked and uneven, leading to safety concerns for pedestrians.

## **Audio & Video:**

When Beth Israel was built in the 1970s, a state-of-the-art sound system was installed. We are still using the original speakers; they're no longer state-of-the-art. Also, there are congregants who rely on livestreaming to participate in services. Rarely does a Shabbat go by without someone telling me about a problem with hearing the service or watching the video feed. We're ordering new equipment that will make our services easier to hear, both in person and remotely, and will allow us to provide better video quality.

## **LED Lighting:**

For the past year, we have been gradually shifting to LED lights, which are both more energy efficient and easier on the eyes than incandescents or fluorescents. At the urging of a congregant, we recently invited DTE Energy to visit both the main building and the G&S 2010 facility to assess our lighting. They counted over 400 fixtures in the main building and 100 more at 2010; the vast majority are configured for fluorescent lamps. DTE replaced over 30 bulbs at no charge and offered significant rebate incentives that will help us shift to LED fixtures throughout both facilities.

By making these improvements, we will ensure that Beth Israel will serve us for decades to come. The up-front costs of these projects are not insignificant, but the long-term cost of ignoring them would be much greater.

## ISRAEL360 Launched in November

ISRAEL360 is a new congregant-initiated project that aims to offer a range of programs focusing on Israel and Israel-related topics. This initiative was launched in November with a lecture on “Gaza and the Hundred Years War,” given by Professor Vic Lieberman, Raoul Wallenberg Distinguished University Professor of History and Professor of Asian and Comparative History at the University of Michigan. Over 200 people from the Beth Israel community and non-congregants attended. Beth Israel Board President, Deborah Ball, kicked off the evening with a meaningful blessing that the congregation is engaged in the work of making community. Babette Levy Daskin introduced the goal of the ISRAEL360 initiative to “elevate and enhance our knowledge of Israel through guest lectures, panel discussions and other events.” A lively Q & A followed Professor Lieberman’s talk, facilitated by Steering Committee member Harvey Berman.

The goal of Israel360 is to enhance a broader understanding of Israel and Israeli life, including history, politics, media, technology, science, art, and literature. Such an effort is more than just learning about Israel, however. Conservative Judaism takes great pride in Israel being an integral part of our Movement. Emet v’Emunah, the Statement of Principles that guides us, says “Israel is not only the Holy Land where our faith was born and developed, but it plays an essential role in our present and future. Israel is a symbol of the unity of the Jewish people the world over, the homeland for millions of Jews and a unique arena for Jewish creativity.”

The second event, “Congregational Perspectives,” was held mid-December. Over 70 Beth Israel congregants met to discuss their connection to Israel and the present conflict through roundtable discussions facilitated by Levana Aronson, Harriet Bakalar, Deborah Ball, Harvey Berman, Barry Nemon, Prue Rosenthal, Steve Rubenstein, Carey Wexler Sherman, and Martha Young.

The first ISRAEL360 event in 2024 will be on **Sunday, January 28 at 7 p.m.**, featuring a talk by Efrat Lachter, War and Investigative Correspondent for Israel’s Channel 12 News and a current [Knight-Wallace Fellow](#) at the University of Michigan. She will provide background on Israel’s media environment as well as relevant updates on the war with Hamas. Ms. Lachter has reported on the war in Ukraine and elsewhere around the world.

Questions? Please contact [ISRAEL360@bethisrael-aa.org](mailto:ISRAEL360@bethisrael-aa.org)

*(President. cont’d from Page 3)*

steering group, through the new Chodesh women’s group, through conversations at kiddush or Kabbalat Shabbat, around Tot Shabbat or at school pickup, or just informally—grant us greater wisdom and direction to work for change than we can individually. This, to be a community, to truly be a house of Israel, is our project.

I wish for you a healthy start to 2024 and comfort and strength as we continue with the unending struggle to be a Jewish people.

L’shalom,



Deborah Loewenberg Ball





**Lynne Caine**  
**Interim Principal**

## Beth Israel so Proud of Our Kids

In my 16 years working as a teacher and then counselor in public schools, I knew well the pride I felt in “my kids,” from the students in my classrooms to an entire grade of 550. It was that feeling that these kids are my kids, too, that made me feel good every day. It was like a secret between me and God that each one of them was cared for by me, appreciated by me, nourished by me. And it was a secret that God and I shared with each child: we could see it in each other’s eyes during a high five in triumph, or during an arm around their shoulder during a tough day, during the “Now I am doing better in math, Mrs. Caine!” following a successful strategy suggestion.

Now at Beth Israel Religious School, I keep having an even greater feeling because in a Jewish community, that secret goes beyond the bond between teacher and class, it’s a bond shared with the community: It’s the feeling that I’m so proud of OUR kids!

Whether you’ve never had children of your own, or you’ve raised children and grandchildren and more, or you’re in the middle of it right now, every child at Beth Israel is also your child because these are our children!

And we have a lot to be proud of. Our kids are amazing, confident, caring Jewish learners. We see it in their joy in leading prayers from the bimah during Camp Shabbat, or dancing in the aisles at Illuminate. We see it in the way the older kids care for the younger kids during Hebrew “buddy” time, in the way our kids support each other in those personal conversations about their lives during class and during break, in the way our kids beam when they’ve mastered a new Hebrew letter, chant the Kaddish, or hold a mezuzah klaf in their hands (and chant the shema from it). We see it when they’re listening intently to a teacher sharing a Jewish teaching that applies to their lives in unexpected ways, and you see it in the photos we share in our school newsletter.

The BIRS School Goals, as directed by Rav Nadav, are:

- Children will become confident, joyful participants in Jewish ritual life.
- Children will make friends and develop a peer-support system.
- Children will become knowledgeable ambassadors of the Jewish people and Israel.
- Children will have deep, non-literal interactions with Torah, and become knowledgeable about the guidance the Jewish tradition provides for addressing real-life challenges.

The devoted and tireless staff of BIRS want you to share in our pride, as we collectively nourish **our children** as they develop into joyful, confident, knowledgeable, caring ambassadors of the Jewish people. When it comes to our kids, **we** have a lot to be proud of!



*Sharing the Light of Hanukkah*



*2nd/3rd Practicing Their Vowels with Their  
6th/7th Reading Buddies*



## Beth Israel Continues to Explore Judaism's Agricultural Roots

The Jewish world has had strong ties to agriculture since Biblical days. Just look at our calendar and the plethora of holidays that tie practical agricultural necessities with biblical events and stories. In *Seasons of our Joy*, Arthur Waskow weaves the circle of our Jewish life from Rosh Hashanah through various harvest, pilgrimage and planting holidays including Sukkot, Pesach, Shavuot and the Omer. We believe that gardening and agriculture are part and parcel of the circle of our lives, and among the most forward looking and hopeful parts of our life cycles. We plant in the fall because we believe in the coming spring. In the spring we believe that our seeds will reap a bountiful harvest. In the winter, we sit back, enjoy the bounty, and order seed catalogs. The cycle goes around.

### Beth Israel Community Garden

Beth Israel Congregation has also been part of the Jewish harvest cycles. For over 20 years, our congregation has had a 20 by 30 foot [Project Grow](#) community garden plot at County Farm Park. This year over 20 volunteers worked in the garden from April through October taking part in all activities from planting, watering, weeding, harvesting and delivering produce to three area food pantries: [Food Gatherers](#), [Jewish Family Services Specialty Food Pantry](#), and [The Backdoor Food Pantry](#) at Temple Beth Emeth. With the hard work and able assistance of all of our volunteers and the organizational structure set up by Babette Levy, in 2023 we donated 535 pounds of fresh, organic produce from our garden, from donated food which was part of our participation in Community Sustainable Agriculture (CSA) (see below), and from donations collected through Matanot L'Evyonim on Purim. Yes, it takes a village and the strong backbone and determination of our members to make a difference for people in need of food.

### Local Food Production is Vital to our Community

Why is the Beth Israel garden so important? First, local food production reduces greenhouse gas emissions by decreasing the number of miles food travels before being consumed. Fewer miles mean less energy to get food from farm-to-table. Second, we provide an immediate benefit to some of the 38,000 food-insecure people in Washtenaw County. Yes, look at that number again: 38,000 food-insecure people who live in our city and county, our neighbors, people we pass on the street. This realization makes it all the more compelling for our community to work even harder, and to continue in our strong tradition of

Tzedakah and food donations. Third, but hardly last, the BIC garden welcomes congregants of all ages who are interested in gardening, learning about gardening, developing new skills, enjoying the outdoors, or helping to deliver our produce to area pantries.

### Get Involved and Help Beth Israel Plan the 5784 Garden

Stay tuned for news about the 5784 Beth Israel garden. We will host a planning session early in the winter and everyone is welcome to participate. Scheduled workdays during the Spring and Summer will be announced after Pesach. For those with children, we will have special family workdays. Come meet the worms in our organic worm farm! What better way to teach children how to appreciate the food they eat and to learn about healthy eating than to have a hand in gardening? Are you in 8th grade or high school? Are you interested in developing a service project to help other people and to learn about food production and delivery? We think that you have found the right place! Please contact the Green Team to learn about opportunities to work with us. We are already dreaming about the best garden ever for 2024!

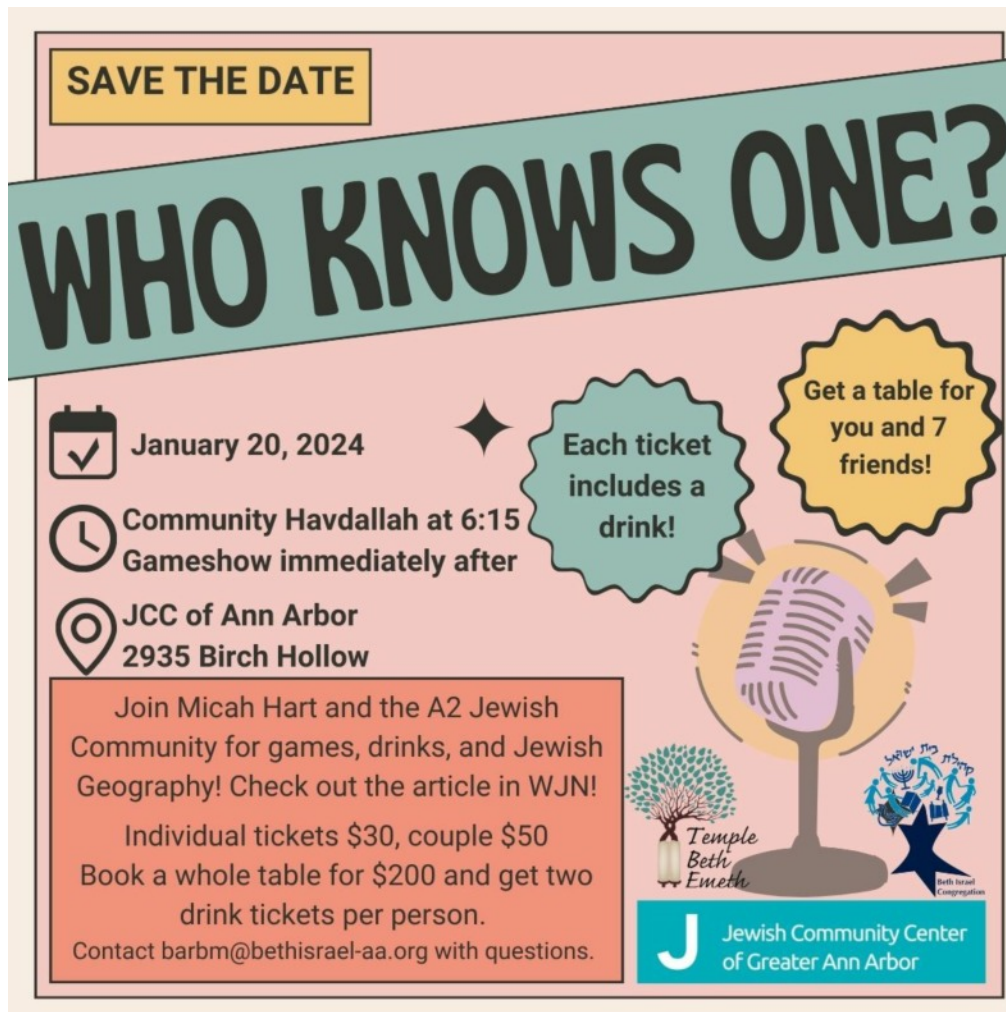
### Thanks to our Hardworking Garden Volunteers

Thanks to all of our 2023 Garden volunteers: Ellen Abramson, Levana Aronson, Rita Gelman, Leonore Gerstein, Germaine Halegoua, Deborah Keller-Cohen, Martha Kransdorf, Nancy Leon, Michele Leshan, Babette Levy Daskin, Barb McAnelly, Chris Merrill, Harvey Michaels, Ed Nadler, Sarah Steinberg, Ben Schwab, Michael Simon, Leah Singman and family, Jerry Sorokin, Vita Strumba and family, Charles Weaver, Diane Wilson and Martha Young.

### Community Supported Agriculture project (CSA) Debuts!

This year saw the debut of the Beth Israel Community Supported Agriculture Sukkot project in collaboration with Tantre Farms. With the vision of Rav Nadav and the hard work of Chris Merrill, we set up a farm drop off at the 2010 building for four weekly deliveries of fresh produce during October. For the October event, 26 families signed up and nine additional boxes were delivered for a one-time Thanksgiving drop off. We all enjoyed the produce, and as indicated above, a large amount was donated to our area food pantries. We will sponsor this initiative next fall and hopefully for many years to come!

Want more information or get involved? Please contact Michael Simon, Green Team Chairperson, at [simonmichael725@gmail.com](mailto:simonmichael725@gmail.com).



## Who Knows One? and Community Havdalah Saturday, January 20 at 6 p.m. Jewish Community Center of Greater Ann Arbor

Beth Israel Congregation, Temple Beth Emeth, and the Jewish Community Center of Ann Arbor, present “Who Knows One?” a game show with Micah Hart on January 20, 2024, at 6:15. The event will open with community Havdalah, and then the games begin.

What is “Who Knows One?” Think of a time you played Jewish Geography with an apparent stranger and you immediately made a friend, and you’ve got the idea! Sitting at home during the COVID-19 Pandemic, founder Micah Hart sought a way to bring people together. He realized that people were isolated from their loved ones, friends, and co-workers, and were looking for a way to stay connected. This show was his way of creating a feeling of connection — by playing off an authentic truth about the Jewish people:

we are all a part of a larger community. This event is full of connections and reconnections, often in surprising and unexpected ways. “Who Knows One?” brings joy to Jewish communities in unprecedented times. You may have seen the show on Zoom, but join us in-person. BIC, TBE, and the JCC will bring us together for the game that will expand your *mishpocheh* as you race to figure out who the “The Chosen One” is. You will listen to stories of Jewish Geography from your friends and neighbors, and create a new *chavurah* as you exclaim, “me too!” when someone shares a little-known fact about themselves. Do you have a story about how Jewish geography impacted your life? We want to feature you! Share your story with Barb at [barbm@bethisrael-aa.org](mailto:barbm@bethisrael-aa.org).

All ticket prices include a drink ticket. Individual tickets are \$30, couples are \$50, and additional drink tickets are \$5. If you’d like to get a table for you and 7 friends (8 people total), we’ll throw in an extra round of drinks! Tables are \$200 with two drink tickets per person. [Click here](#) to purchase your tickets.



# BETH ISRAEL CONGREGATION EVENTS

## Beth Israel Presents Rabbi Sharon Brous Tuesday, February 20 at 6:30 p.m.

On February 20, at 6:30, Beth Israel Congregation will welcome Rabbi Sharon Brous to discuss her new book, *The Amen Effect: Ancient Wisdom to Mend Our Broken Hearts and World*. Her talk will be in-person only, and will feature a Q & A session and reception.

Rabbi Sharon Brous is a leading voice in reanimating religious life in America, working to develop a spiritual roadmap for a soulful, justice-driven, multi-faith ethos in Los Angeles and around the country. She is the senior and founding rabbi of IKAR, a Jewish community that launched in 2004 to reinvigorate Jewish practice and inspire people of faith to reclaim a moral and prophetic voice. IKAR quickly became one of the fastest growing and most influential Jewish congregations in the country, and is credited with sparking a rethinking of religious life in a time of unprecedented disaffection and declining affiliation.

Brous's 2016 TED talk, "Reclaiming Religion," has been viewed by more than 1.4 million people and translated into 23 languages. In 2013, she blessed President Obama and Vice President Biden at the Inaugural National Prayer Service, and returned in 2021 to bless President Biden and Vice President Harris, and then to lead the White House Passover Seder that spring. Brous spoke at the Women's March in Washington, DC in 2017 and at the opening of the National Memorial for Peace and Justice the following year. She was named #1 on the Newsweek/The Daily Beast list of the most influential Rabbis in America, and has been recognized by The Forward and the Jerusalem Post as one of the fifty most influential Jews. In 2021 she was one of CAP's 21 Faith Leaders to Watch, and she was featured on the cover of TIME magazine in a 2018 tribute to Norman Rockwell's Four Freedoms.

Brous is in the inaugural cohort of Auburn Seminary's Senior Fellows program, which unites top faith leaders working on the frontlines for justice. She also sits on the faculty of the Shalom Hartman Institute-North America and REBOOT, and serves on



the International Council of the New Israel Fund, the national steering committee for the Poor People's Campaign, and the advisory board of Dayenu, a Jewish Call to Climate Justice.

She is a graduate of Columbia University, was ordained by the Jewish Theological Seminary, and lives in Los Angeles with her husband and three children.

Tickets will be available starting January 15 and will include a free copy of her book along with an opportunity to purchase additional copies. Space is limited so watch for the ticket purchase link and don't miss this opportunity to hear one of the preeminent Jewish voices of our time.

## Shabbat Limmud Saturday, January 13 at 9:00 a.m.

Shabbat Limmud is an opportunity for informal and lively discussion on the Parasha, the Torah portion of the week, over coffee and cake. We meet in the Beth Israel library before Shabbat morning services at 9 a.m. and will conclude at 9:45. Rabbi Dobrusin will facilitate the discussion and all texts will be provided. We invite you to join us for a stimulating start to Shabbat morning!

**Registration Encouraged!**

# Babysitting at BIC

Every Saturday during  
shabbat services  
Ages 3-11  
Registration Encouraged  
Babysitters will be available in  
the Gan Katan (Lower Level  
Room 15) from 9:30-1  
Questions? Barbm@bethisrael-aa.org



## JCOR UPDATE

By: Deborah Meyers Greene

### Exciting News About JCOR Family #1

With the assistance of Habitat for Humanity, JCOR's first (Afro-Colombian) refugee family have joined the community of American homeowners. They are shown in this photo at the ceremonial ribbon cutting for their new home in early December—less than 14 months after they first landed in the United States!

### JCOR's Refugee Family #2...

#### ...Moves In

On November 27, the night of the freak snow squalls, JCOR volunteers met the (Yemeni) refugee family at Detroit Metro Airport: mother, father, their 7-year-old son, his 4-year-old little sister, and their 10-month-old baby sister. The volunteers swapped the family's lightweight jackets for heavier ones, laid a crocheted blanket over baby sister in her carriage, and slipped mittens on the older children's hands along with long strings attached to huge (4x4-foot) dinosaur and butterfly balloons.

The family boarded the Jewish Family Services van whose driver bravely navigated highway lanes obscured by rapidly falling snow to deliver them to their temporary lodgings in Ann Arbor, where JCOR volunteers earlier had delivered groceries, clothing, and toys and books for the kids. The next day, a JCOR volunteer made an emergency delivery of baby formula and diapers followed by days punctuated by outings and visits.

#### ...Moves On

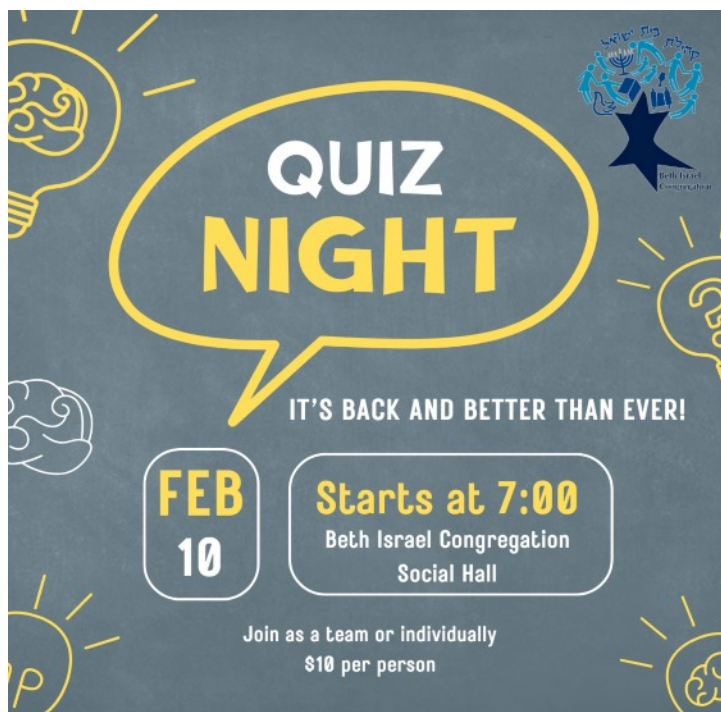
Three weeks later, as JCOR volunteers were zeroing in on permanent Ann Arbor accommodations, the family announced that they really wanted to tap into the Arabic community of Dearborn where they had just secured a family home through personal networking. JCOR reluctantly waved goodbye as they left for suburban Detroit in mid-December.

### ...& Now JCOR Looks Forward

Always working in collaboration with JFS, JCOR is planning for its next family in January or February. We'll get information to you as soon as we know when they'll arrive. Watch this space for updates!

## Sweatshirt Shabbat & Cholent Kiddush Saturday, January 27 at 9:30 a.m.


Join Beth Israel for Shabbat morning services in the cozy comfort of your favorite sweatshirt. Stay and warm yourself with our hearty cholent kiddush after services.




Quiz Night is coming on Saturday night, February 10, 2024. The doors will open at 7:00 p.m. and the festivities start promptly at 7:30 p.m.. Pre-registration is required, please [click here](#). Snacks and drinks will be provided. Teams will generally be 10 people. Form your own team or just come out and you will be matched up with other Trivia enthusiasts. List your team members on the registration form. The fee for the night is \$10 per person. It will be a challenging and stimulating evening of trivia. Come out and join the fun.



## BETH ISRAEL CONGREGATION EVENTS



### Aura of Kabbalat Shabbat



Dec 8 - Jan 12 - Feb 2 - Mar 22 - April 26 • 6 PM  
Beth Israel Congregation Sanctuary

A Jewish Renewal inspired singing  
service led by  
Rabbi Aura Ahuvia





## Tot Shabbat



January 13, 27  
February 10, 24  
at 10:30 am

Join us for a playful morning of Jewish songs and stories.  
Challah and grape juice kiddush included. For kids age 1  
through 1st grade and parents,  
but all are welcome to join.



Sunday, January 28  
7 pm  
BIC Sanctuary

# ISRAEL360:

Efrat Lachter  
Israeli Journalist

*Israel at War:  
Updates from a War Correspondent*



On January 21 at 7:00 pm, ISRAEL360 will present Israel at War: Updates from a War Correspondent, with Efrat Lachter. Ms. Lachter is an Israeli journalist who is spending this year as a Knight-Wallace Journalism Fellow at the University of Michigan. She serves as an investigative reporter for Israel's Channel 12 News and the weekly newsmagazine, "Friday Studio." A recipient of the 2022 Shimon Peres Center for Peace Award, she has directed and produced more than 200 documentary segments on topics including human trafficking in Sudan and Israel, modern-day slavery in Malawi, orphans in Ukraine, and many more. As the first female war correspondent in her newsroom, much of Efrat's work has illuminated the lives of women in conflict zones.

Registration required. Email Barb at [Barbm@bethisrael-aa.org](mailto:Barbm@bethisrael-aa.org) with questions.



FRIDAY NIGHT SERVICE

# Camp Style Shabbat

February | 09 | 2024

5:45 Dinner 6:15 Service

Beth Israel Congregation

Family-Friendly Dinner for all  
Rav Nadav on Siddur  
Rachael Lawrence-Lupton on Guitar  
Kids on Bimah  
Smiles on Faces  
Gratitude in Hearts

שבת  
שלום

Shabbat  
Shalom



questions? email [Barbm@bethisrael-aa.org](mailto:Barbm@bethisrael-aa.org)

Interested in sponsoring a later shabbat dinner? email [gsorokin@bethisrael-aa.org](mailto:gsorokin@bethisrael-aa.org)



## World Wide Wrap Sunday, February 11



9:30 - 10:30 a.m. — Shacharit  
10:30 - 11:00 a.m. — Kids Learning Experience  
with Tefillin (Parents Welcome)

Support for our community from  
our community

## CHESED CARE TEAM

Ways that we support our  
community include giving  
rides to appointments,  
social connection, and  
challah delivery! Reach  
out to help or receive  
help!



QUESTIONS?  
BARBM@BETHISRAEL-AA.ORG



## Share Your Simcha With Us

Has your family had a simcha that you would like to share with the congregation? Contact the office at [bjarvis@bethisrael-aa.org](mailto:bjarvis@bethisrael-aa.org) and we would be happy to announce it in the next issue of the Hashaliach.

## Mazal Tov to...

**Gil Rubenstein**, son of Joel Rubenstein & Lauren Katz on his upcoming Bar Mitzvah on January 20.

**Toby Freddolino**, son of Lydia Freddolino & Sara Goldshlack, on his upcoming Bar Mitzvah on February 24.

**Denise Thal & David Scobey** on the birth of their granddaughter, Frieda Ella Page, daughter of Jake Scobey-Thal & Al (Allison) Page.

## Condolences to...

**The Family of Sallie Abelson** on her death.

**Rabbi Ivan Caine** on the death of his brother Burton Caine, also uncle of Rabbi Nadav Caine, Hanan Caine, and Shoshanna Wechter, and brother-in-law of Meira Miller.

**The family of Ellen Dannin** on her death.

**Terri Ginsburg** on the death of her mother, Barbara Altman.

**Jack Scheerer** on the death of his mother, Gwendolyn Scheerer.

The deadline article submissions for the March/April issue of Hashaliach is Wednesday, February 14. If you need additional time, please contact Beth Jarvis at [bjarvis@bethisrael-aa.org](mailto:bjarvis@bethisrael-aa.org).



**SOCIAL ACTION  
COMMITTEE**  
Beth Israel Congregation



**Sunday, January 7**

**Sunday, February 4**

**9:30 a.m. - Green Team Meeting**

**10:30 a.m. - Social Action  
Committee Meeting**

**Meetings take place in the upper level  
of the 2010 G & S Building.**



## Beth Israel Funds

- Adult Library Fund and Youth Library (Krickstein Memorial) Fund
- Art Fund
- Benjamin Memorial Youth Activities Fund
- Beth Israel Religious School Scholarship Fund
- Building Accessibility Fund
- Building & Infrastructure Fund
- Building Renovation Fund
- Cemetery Landscaping Fund
- Chapel Renovation Fund
- Child Care Fund
- Culinary Fund
- Flower Fund
- Morris & Marilyn Friedman Jewish Camp Fund
- Hilma Geffen Memorial Fund
- Henry Gershowitz Building Fund
- Green Team Fund
- Harold & Jean Grossman Fund
- Kessel Memorial Prayer Book Fund
- Eli Ladin Israel Scholarship Fund
- Maintenance Equipment Fund
- Ada & Isador Margolis Memorial Religious School Fund
- Music Fund
- Joseph Newhouse Beth Israel Musical Enhancement Fund
- Office Equipment Fund
- Pikuach Nefesh (Health & Welfare) Fund
- Rabbi's Discretionary Fund
- Religious School Scholarship Fund
- Rosenberg Lecture Fund
- Sa'ad: A Helping Hand Fund
- Miriam S. Joffe Samson Jewish Family Life Programming Fund
- Richard Seid Teacher Stipend Fund
- Seligson Adult Education Fund
- Shiva Tray Fund
- Social Action Fund
- Ronald & Elana Sussman Education Fund
- Torah Restoration Fund

## Contributions to Beth Israel Congregation

The Board and Staff of Beth Israel wish to extend our sincere thanks to all those whose contributions help the synagogue thrive.

**Please specify where you would like your funds to go. Those being honored will receive an acknowledgement of your generosity.**

The minimum donation to be listed in HaShaliach remains \$5. **However, a minimum donation of \$10 is required to have an acknowledgement mailed to the honoree or family of the deceased.**

In addition, larger contributions will be designated:

\$50 - \$99 Chazak (\*)

\$100 - \$499 Koach (\*\*)

\$500 - \$999 Gibor (\*\*\*)

\$1000 and over Maccabee (\*\*\*\*)

Contributions listed below are through 12/21/2023. Contributions received after that date will be listed in the next HaShaliach.

### GENERAL DONATIONS

Henry Appelman and the children and grandchildren of Harlene Winnick Appelman in appreciation of Rabbi Robert Dobrusin for all his help, sympathy, compassion, and affection.\*\*\*\*

Leslie Bash in memory of her father, Sidney Sager, on his yahrzeit.

Lisa, Jeffrey, Zachary, and Solomon Bernstein in loving memory of Jeff's uncle, Harold Lerner, on his yahrzeit.

Ronna & Lawrence Davis in memory of Ronna's parents, Jean & Marvin Solvith, on their yahrzeits.\*\*

Conrad Foster in memory of his grandmother, Bertha Stein, on her yahrzeit.

Cheryl & Mark Good in memory of Cheryl's mother, Phyllis Werbel, on her yahrzeit.\*

Pamela S. Harper in memory of her parents, Marvin & Jean Solvith, on their yahrzeits.\*\*

Emanuel & Rivka Kahana in memory of Rivka's parents, Lev & Tzipora Mendelevitz, on their yahrzeits.

Marilyn & Leonard Kirsch in memory of Marilyn's mother, Millie Dittrich, on her yahrzeit.

Carlos Kornberger & Terry Miller in appreciation of Beth Israel Congregation.\*\*

Warren & Sandy Lada in memory of Warren's parents, Dr. Arnold & Doris Lada, on their yahrzeits.\*

Jeffrey Leflein in memory of his father, William Leflein, on his yahrzeit.

Melvyn Levitsky in memory of his wife, Joan Levitsky, on her yahrzeit.\*\*

The Meizlish/Botkin Family with gratitude to Sara Adler for being with them through it all; in memory of Fred Reingold, father of Mat Reingold.\*\*

Judy Musket in memory of her mother, Lillian Musket, on her yahrzeit.\*\*

Beverly Pelletier in memory of her father, Benno Mann Bechhold, on his yahrzeit.

Maxine Solvay in memory of her father, Milton Siegel, on his yahrzeit.

Sandy & Rich Stein in memory of Seymour Koenigsburg, partner of Marilyn Friedman.

Scott Stewart, Jenna Wunder and Levi in appreciation of Rav Nadav, Meg Bernstein, and Jerry Sorokin for their time and expertise in creating a beautiful and meaningful Bar Mitzvah service for Levi.\*\*\*

Nathan Stone in memory of his brother, Joseph A. Stone, on his yahrzeit.

Esther Ullman & Morley Witus in appreciation of Beth Israel Congregation.\*\*



## **BETH ISRAEL RELIGIOUS SCHOOL DONATIONS**

Beth Dwoskin & Bob Blumenthal in memory of Beth's father, David Dwoskin, on his yahrzeit.

Shira & Steve Klein in memory of Barbara Altman, mother of Terri Ginsburg.

Aviva Panush & Mitch Silverman in honor of Anika & Iain Austad and Tetra Epstein becoming Bnai Mitzvah; in honor of the birth of Sadie Rose Shill, daughter of Greg Shill & Jaime Braverman and granddaughter of Karen Shill & Henry Beitz and Merton Shill.\*

## **KIDDUSH DONATIONS**

Shira & Steve Klein in memory of Seymour Koenigsberg, partner of Marilyn Friedman.

## **ADULT LIBRARY FUND**

Reva Bornstein in memory of her father, Harry Rice, on his yahrzeit.

Eileen & Saul Hymans in memory of Max Hymans, dear father of Saul, on his yahrzeit; in memory of Harriet Selin.

Lily Ladin in memory of Harriet Selin.

## **BETH ISRAEL RELIGIOUS SCHOOL SCHOLARSHIP FUND**

Jean Clemes in memory of her mother, Helen Goren, on her yahrzeit.\*

Larry Siden & Latania Fair in memory of Barbara Altman, mother of Terri Ginsburg; in memory of Burton Caine, brother of Rabbi Ivan Caine, uncle of Rabbi Nadav Caine, Hanan Caine, and Shoshanna Wechter, and brother-in-law of Meira Miller.\*

## **BUILDING & INFRASTRUCTURE FUND**

Michael & Leslie Morris in memory of Michael's father, Melvin Morris, on his yahrzeit.\*\*\*

## **BUILDING RENOVATION FUND**

Harvey Berman & Shelly Kovacs Berman in memory of Burton Caine, brother of Rabbi Ivan Caine, uncle of Rabbi Nadav Caine, Hanan Caine, and Shoshanna Wechter, and brother-in-law of Meira Miller.

## **CEMETERY LANDSCAPING FUND**

Thea Glicksman in memory of her father, Edward M. Schwartz, on his yahrzeit.

## **CULINARY FUND**

Charlene Yudowin in memory of her dear father, Samuel Oventhal, on his yahrzeit.

## **MARILYN & MORRIS FRIEDMAN JEWISH CAMP FUND**

Helen & David Aminoff in memory of Seymour Koenigsberg, partner of Marilyn Friedman.

Dr. & Mrs. William R. Hart in memory of Seymour Koenigsberg, partner of Marilyn Friedman.\*\*

Barbara Kramer & Steven Acker in memory of Barbara Altman, mother of Terri Ginsburg.

Bill & Lia Poorvu in memory of Seymour Koenigsberg, partner of Marilyn Friedman.\*\*

## **ELI LADIN ISRAEL SCHOLARSHIP FUND**

Arnie & Susi Coran in memory of Arnie's father, Charles Coran, on his yahrzeit.

## **ADA & ISADOR MARGOLIS MEMORIAL RELIGIOUS SCHOOL FUND**

Aviva Panush & Mitch Silverman in honor of Maya Kross, Saroya Shea, and Leah Shelef becoming Bat Mitzvah; in appreciation of Lynne Caine.\*

## **MUSIC FUND**

Cheryl & Mark Good in memory of Cheryl's father, Dr. Leslie Werbel, on his yahrzeit.\*

Steven & Stefani Weiss in memory of Steven's father, Leo Weiss, on his yahrzeit.\*\*

## **PIKUACH NEFESH FUND**

Fran Martin in memory of her father, Harry Siskind, on his yahrzeit.

Merton Shill in memory of his mother, Jennie Shill, on her yahrzeit.\*

## **PRAYER BOOK FUND**

Joseph & Gloria Gurt in memory of Gloria's mother, Florence Kaslow, on her yahrzeit.

## **RABBI'S DISCRETIONARY FUND**

Irene & Paul Adler and Family in memory of Paul's father, Jack Adler, on his yahrzeit.\*\*

Neil & Janice Alexander in memory of Janice's loving brother, Harvey Katz, and Neil's parents, Chayim Alexander & Ziwa Alexander Katz, on their yahrzeits.\*\*

Roann Altman in memory of her parents, Edwin & Gertrude Altman, on their yahrzeits; in memory of Gwendolyn Scheerer, mother of Jack Scheerer; in honor of Mitch Silverman's generosity of spirit; in honor of Rita Gelman's care for others.\*

Helen & David Aminoff in memory of Doris Miller.

Ruth Bardenstein & Jim Roll in memory of Burton Caine, brother of Rabbi Ivan Caine, uncle of Rabbi Nadav Caine, Hanan Caine, and Shoshanna Wechter, and brother-in-law of Meira Miller.

Karlan & Linda Bender in memory of Burton Caine, brother of Rabbi Ivan Caine, uncle of Rabbi Nadav Caine, Hanan Caine, and Shoshanna Wechter, and brother-in-law of Meira Miller.\*\*

Elliot H. Gertel in memory of Professor Burton Caine, brother of Rabbi Ivan Caine, uncle of Rabbi Nadav Caine, Hanan Caine, and Shoshanna Wechter, and brother-in-law of Meira Miller.

Erich L. Graf in memory of his father, Otto Graf, on his yahrzeit.\*

Barry & Susan Gross in memory of Burton Caine, brother of Rabbi Ivan Caine, uncle of Rabbi Nadav Caine, Hanan Caine, and Shoshanna Wechter, and brother-in-law of Meira Miller.

Steve & Shira Klein in memory of Steve's parents, Barbara & Victor Klein, on their yahrzeits.

Alan Levy & Susan Pollans in memory of Alan's mother, Thelma Levy, and Susan's father, Allen Pollans, on their yahrzeits.\*\*

Alice Liberson in appreciation of Rav Nadav.\*

Herb & Lynn Malinoff in appreciation of Rav Nadav's leadership and guidance.\*

The Meizlish/Botkin Family with gratitude to Rav Nadav for all his kindness and support.\*\*

Meira Miller in memory of her mother, Sonia Wechter, on her yahrzeit.

In memory of Milton Ressler on his yahrzeit from his loving extended Ressler Family.\*\*

Nina K. & Howard Rush in memory of Nina's parents, Sigmund & Florence Kirschen, on their yahrzeits.\*

Deborah Salzberg in memory of her mother, Sally Salzberg, on her yahrzeit.\*\*

Art & Mary Schuman in loving memory of Art's mother, Mollie Schuman, on her yahrzeit.\*

Nancy & Samuel Silver in memory of Barbara Altman, mother of Terri Ginsburg.

Larry & Roberta Tankanow in memory of Larry's father, Edward Tankanow, and Roberta's father, Oscar Zuckerman, on their yahrzeits.\*

Martha & Eric Young in memory of Martha's sister, Judith Finkelstein Kashtan, on her yahrzeit.\*

## **SA'AD: A HELPING HAND FUND**

Nancy Karp in memory of her cousin, Susan Goldman, and Henriette Bloch and Nicole Bloch on their yahrzeits.

## **SELIGSON ADULT EDUCATION FUND**

Aviva Panush & Mitch Silverman in memory of Irving Panush on his yahrzeit.

## **SOCIAL ACTION FUND**

Ruth Bardenstein & Jim Roll in memory of Gwendolyn Scheerer, mother of Jack Scheerer.

Meira Miller in honor of Rabbi Dobrusin.

## **RONALD & ELANA SUSSMAN EDUCATION FUND**

Barry Nemon with thanks and appreciation to Ron & Lonnie Sussman.\*\*\*\*

Donna Winkelman in appreciation of Ron & Lonnie Sussman.\*\*



# השליח HASHALIACH

BETH ISRAEL CONGREGATION  
PRESENTS  
ROSENBERG SCHOLAR-IN-RESIDENCE  
WEEKEND FEATURING

APRIL 5-7TH,  
2024

## Rabbi Bradley Shavit Artson



### Candle Lighting Times

Fri., Jan. 5	5:02 p.m.
Fri., Jan. 12	5:10 p.m.
Fri., Jan. 19	5:18 p.m.
Fri., Jan. 26	5:26 p.m.
Fri., Feb. 2	5:35 p.m.
Fri., Feb. 9	5:45 p.m.
Fri., Feb. 16	5:53 p.m.
Fri., Feb. 23	6:02 p.m.

### Shabbat Ends\*

Sat., Jan 6	6:00 p.m.
Sat., Jan. 13	6:07 p.m.
Sat., Jan. 20	6:16 p.m.
Sat., Jan. 27	6:25 p.m.
Sat., Feb. 3	6:34 p.m.
Sat., Feb. 10	6:43 p.m.
Sat., Feb. 17	6:52 p.m.
Sat., Feb. 24	7:01 p.m.

\* - 42 minutes after sundown