



Temple Anshe Amunim

26 BROAD STREET | PITTSFIELD, MA 01201

(413) 442-5910 | TEMPOFFICE@ANSHEAMUNIM.ORG

WWW.ANSHEAMUNIM.ORG

INSIDE THIS ISSUE:

Page 2
Schedule of Services

Page 3
**President's Message,
Board Actions**

Page 4
**Joint Board Meeting
Report**

Page 5
**Social Action
Committee**

Page 6
**New Class Offerings,
Summer Camp
Scholarship**

Page 7
**Learn Hebrew,
Legacy Writing
Workshop**

Page 8
**Q&A with the Shaw
Family**

Page 9
**Supplemental Dues
Matching Grant**

Page 10
Book Review

Page 11
**The Israel-Hamas
War - An Exchange
of Thoughts**

Page 12
**TAA Winter Film
Series 2024**

Page 13
Long Range Calendar

Page 14
**Board of Directors
Committee Chairs**

Page 15
Donation Form

Page 16
Temple Donations

Page 17
**February Yahrzeits,
Birthdays and
Anniversaries**

Page 18
Place an Ad

Page 19
February Calendar

Page 20
**Caring Committee
Information and
TAA Information**

F E B R U A R Y 2 0 2 4 | 2 2 S H E V E T - 2 0 A D A R 1



Rabbi Dr. Scott B. Saulson

In honor of Valentine's Day, the Osher Lifelong Learning Institute (OLLI) will present a talk by Professor Ilan Stavans of Amherst, "A Brief History of Love." Stavans earned a Master's Degree from Jewish Theological Seminary and a Doctorate from Columbia University. According to OLLI, Stavans will survey the permutations on what Robert Frost called "the irresistible desire to be irresistibly desired."

Concerning "talks" of love, Eliza Doolittle of "My Fair Lady," has this to say:

Don't talk of stars
Burning above;
If you're in love, Show me!
Tell me no dreams
Filled with desire.
If you're on fire, Show me!

What about the flip side of love, namely, hate? Hate — hardly itching to sit in the back seat as opposed to grabbing hold of the steering wheel. Indeed, it's difficult to ignore or suspend trepidation as one of our reac-

tions to this driver of emotions. After all, in the wake of hate we would expect harm, physical and psychic. Naturally, we are on guard. In a protective mode. Such is our reaction to bomb threats and the troubling uptick of antisemitic verbiage and ancillary threats.

Yet, as Jews, if the way of life we profess to love, if the communal institutions we profess to love, if the heritage we profess to love are simply loved behind bullet-proof glass, if they are merely lodged in our bouts of nostalgia, then the love we profess for them is crypto-love. In the meantime, if they could speak for themselves, our way of life, our institutions and our heritage would scream "show me!"

By the way, we have our own "Valentine's Day," the 15th of Av, corresponding this year to 19th of August. Check out: <https://www.myjewishlearning.com/article/tu-bav/>

— Rabbi Dr. Scott B. Saulson

Schedule of Shabbat Services - February

Friday, February 2

5:30 p.m. - Erev Shabbat Service

****Followed by Soup and Naan Oneg***

Saturday, February 3

9:30 a.m. - Torah Study

Friday, February 9

5:30 p.m. - Erev Shabbat Service

Saturday, February 10

9:30 a.m. - Torah Study

Friday, February 16

5:30 p.m. - Erev Shabbat Service

Saturday, February 17

9:30 a.m. - Torah Study

Friday, February 23

5:30 p.m. - Erev Shabbat Service

Saturday, February 24

9:30 a.m. - Torah Study



***First Friday Soup and Naan Onegs!**
February 2, March 1, April 5

Can't make it in person?
Don't forget that Friday night services are on Zoom or live-streamed.
Check the weekly email for that week's log-on information.

Please note that services will be held in person and virtually. For technical assistance, please contact: Dave Wallace (413) 822-8259

What is too far?

To My Temple Family,



Barbara Viniar

A woman I have always liked and admired believes that Israel is committing genocide. When I saw her use that language my first thought was that I would never patronize her enterprise again. And then I thought, what does that accomplish? She'll never know why and if the two of us can't have a civil conversation, what hope is there for anyone else to make peace?

For a variety of reasons, we have not yet been able to get together. But I admit to being hesitant. Our email exchanges have led me to believe that the outcome of our conversation will be that neither of us will change our beliefs. Is that a chasm too wide to breach? I fear it may be.

Her belief is in opposition to the essence of my identity as a Jew. It is an insult to my family history. I have never been an "Israel right or wrong" believer. I think

Netanyahu's policies and lust for power are dangerous. If I had been in Israel before October 7, I am sure I would have been protesting, as I have often done in my own country. But there is a big difference between bad policy – policy that, in a democracy, can be changed, and the systematic attempt to exterminate a people. And I am afraid that if she cannot admit to that difference, the rift between us is beyond repair.

There are so many things to be sad and angry about as the war continues. The hostages have yet to be returned; innocent Israeli and Gazan families have died or been displaced from their homes. My personal loss feels trivial in comparison, but it is still painful.

Note: a discussion of 'The Israel-Hamas War & Our Struggle' is being held at the temple on Sunday, February 18 at noon.



Board Actions

No board actions to report.

The board meets the second Thursday of the month. The next meeting is February 15, 2024.

Report on Joint Board Meeting with Knesset Israel

by Barbara Viniar

On Tuesday, January 17, members of the boards of TAA and KI met together to tour the KI building and have our first discussion regarding the possibility of co-location. It was a thoughtful and productive meeting characterized by mutual respect and a commitment to enhancing the future of Jewish Community in Central Berkshire. The purpose of the meeting was to begin getting to know each other. No decisions, other than to continue this process, were made.

We began the meeting by sharing our assumptions:

- As a community, we face demographic challenges which have financial and spiritual consequences.
- There is a demand and need for sustainable and vibrant Reform and Conservative congregations in Pittsfield. Successful co-location will enrich the Jewish Community of Central Berkshire County.
- Successful and meaningful resource sharing will require transparency, creativity and flexibility.
- We enter into this process as equals - not equal in every respect but respected equally.
- While some issues need to be addressed preliminarily, others will arise unexpectedly. We will regard them as problems to be solved, not barriers to success. The leadership of each congregation will meet regularly to anticipate and address issues that arise in the course of our relationship in a spirit of kindness and appreciation for the diversity of our community.
- Merger is not on our agenda; each congregation will retain its identity and halachic traditions and practices. We will, however, explore shared administration/support services.
- Support from both congregations is essential.
- Getting to know each other comes first.
- We enter into our efforts with an open mind and an open heart.

Please note that these assumptions stress our commitment to preserving Anshe's legacy and identity and that congregational support will be essential to moving forward.

Each congregation then shared specific aspects of their identity, which fell into the broad categories of purpose/core values, volunteerism, lifelong learning, ritual practice, and social action. This process yielded far more commonalities than differences, starting with KI's statement of purpose, which can be found on their web site:

We are here to nourish mind, heart and soul.
We are here to inspire through word and deed.
We are here to accompany each other on life's journey.
We are here to celebrate in community.
We are here to bring to life the wisdom and values of Torah.
We are here to transform our world.

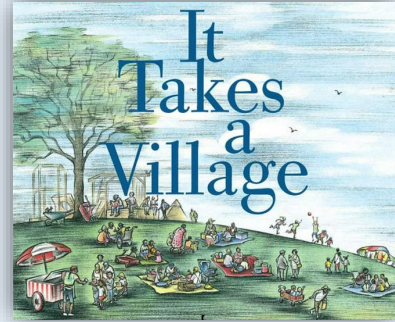
Clearly, these are values we share, even if they are manifested differently in the specifics of our practices. In our discussion of the differences related to ritual, we agreed that if we co-locate, each congregation will retain its own practices. If Anshe is holding a Shabbat or holiday service, for example, we will have music. We will learn to use KI's Kosher kitchen.

Our immediate next step is to start creating joint programs, such as a Purim celebration that will involve our school children on March 23rd and to encourage members of both congregations to attend each other's special services (such as KI's Shirei Shabbat and dinner) and lifelong learning programs. These will be publicized.

We will report regularly to the congregation about other steps we are planning, as well as opportunities for you to express your concerns and be involved.

As innovative as this may be in the Berkshires, there are many examples around the country of congregations who have successfully navigated this kind of co-location. Rabbi Scott has extensive experience in the process. I am confident that we can move forward with the positive attitude we need to succeed.

SOCIAL ACTION COMMITTEE



Berkshire County Diaper Project (BCDP)

This March and April, the Social Action Committee will have a drive to support the Berkshire County Diaper Project (BCDP). Diaper need can cause significant depression in parents and potential health and mental issues for their children. Low-income families frequently struggle to buy diapers, which cost more than \$100 per month per child. Diapers are not covered by the WIC Program, the federal program supporting low income earning women and their children up to age 5; nor by SNAP, Supplemental Nutrition Assistance Program, otherwise known as food stamps. Without a supply of disposable diapers provided by parents, infants and toddlers are not allowed to attend day-care. Without daycare, parents cannot work to provide diapers and other essentials.

All funds go directly toward purchasing diapers for babies and toddlers in need. The diapers are distributed throughout Berkshire County to sites including the South Congregational Church, the Elizabeth Freeman Center, the Family Center of North Berkshire County, the Family Resource Center in Gt. Barrington, Manos Unidos, Jewish Family Services for refugee families, Gladys Allen Brigham Center, and all three WIC offices. Since BCDP's inception in September 2014, 2 million diapers have been given away.

You can either send a monetary donation or drop off diapers. Please send all checks to the TAA office. The checks can be made out to TAA indicating on the memo section that the check is for BCDP. BCDP is able to purchase diapers at a marked discount. Diapers, including open packages, can be dropped off at TAA. The Temple is open Mondays – Fridays, 10am – 3pm.



Religious Action Center (RAC/MA)

The Religious Action Center is the social justice arm of the Union of Reform Judaism. The Massachusetts division of the Religious Action Center (RAC/MA) has set as its primary goal this year the promotion of solutions to Massachusetts' pressing housing needs. Governor Healey has proposed a billion dollar, multifaceted bill, the Affordable Housing Act (AHA), that addresses many of the state's housing issues. RAC/MA endorses this Act as well as amendments proposed by the Western Massachusetts Housing Coalition (WMHC), that attempt to improve access to the various funds in the AHA by rural communities, changes important to many Berkshire County communities.

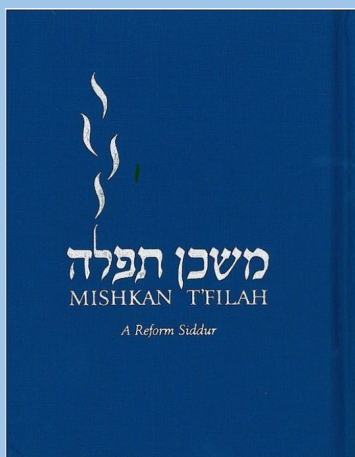
To that end, on January 18th, members of the three Reform congregations in the Berkshires; Hevreh, Beth Israel, and TAA, met via Zoom with the four state legislators from Berkshire County; Senator Paul Mark, Representatives John Barrett, Tricia Farley-Bouvier, and Smitty Pignatelli. Members of the congregations presented RAC/MA's endorsement of the AHA Bill as well as the WMHC amendments and asked the legislators to respond. All of the legislators expressed significant awareness of the housing needs in Massachusetts and especially in Berkshire County, endorsed the AHA Bill, and agreed that some amendments would be necessary.

RAC/MA and the liaisons to RAC/MA from the three Berkshire congregations will continue to monitor how the AHA Bill and amendments progress. You may be asked to write letters of support in the future.

Our continued thanks for the support of Rabbi Scott, Dave, Sherry, and the TAA congregation.

Janie & Larry Pellish, Co-Chairs

May the words of our mouths and the meditations of our hearts be acceptable . . .



Feeling Good About Our Siddur

4 Roundtables with Rabbi Scott
Lunch & Learn Thursdays in February
2/8, 2/15, 2/22, 2/29
Noon - 1pm
In Person

Please email or call the office if you are interested in attending

templeoffice@ansheamunim.org (413) 442-5910

Coffee, Tea, and Hot Chocolate will be available.
Please bring your own lunch/snack.

What picture do you want to leave?

A workshop devoted to exploring an internal snapshot that can speak volumes to you and your loved ones about your acquired values and wisdom.

Ethical wills flourished in usage and elaborate style in medieval Jewish communities. They sought to clarify for subsequent generations behaviors and outlooks which ground one's character for the good. As such, ethical wills are in keeping with all traditions and cultures.



Six 1.5-hour sessions will offer several techniques to get you on the way to creating your own ethical will.

Six Saturdays, beginning February 10 at 10:45am Library [In person only]

Please email the office templeoffice@ansheamunim.org or call the office (413) 442-5910 to register.

P.S. Note-taking will be helpful and you may want to bring some victuals.

Rabbi Scott, Expedition Facilitator

From the Treasurer:

For those already planning for the summer, a reminder that Temple Anshe Amunim has two camp scholarship funds.

- ♦ The Stolzberg campership fund will provide a scholarship for attendance at any Jewish oriented camp.
- ♦ The Shaun Beckwith-Chausen campership fund specifically provides a scholarship for attendance at Camp Eisner in Great Barrington.



For more information, please contact Larry Pellish at ljpellish@gmail.com.

NJOP Crash Course - Beginning Hebrew 1



Do you want to

- ◆ Learn a new language?
- ◆ Be able to follow along during services?
- ◆ Make new friends?

Classes begin February 27 at 10:30 am - 5 week series

Free of charge

Please email or call the office if you want to attend.

templeoffice@ansheamunim.org (413) 422-5910

Oral History & Legacy Interviewing Workshop with Adam Phillips of FamilyLore and CompanyLore

Temple Anshe Amunim is offering a hands-on, in-person workshop that will prepare participants to conduct and facilitate family interviews, the gathering of life stories, and the ability to create the unique and precious gift of their 'Family Story' for themselves and future generations.

Adam Phillips is a recently retired radio journalist with 35 years of experience doing in-depth interviews. He has taught oral history and legacy interviewing workshops to professionals and amateurs alike.

The workshop will take place on Tuesday, March 5, 2024, from 1 – 4 PM

Pre-registration is required, and the cost is \$15 per person.

www.ansheamunim.org/event/legacyworkshop

For more information about Adam Phillips: www.audiobyadam.com

Q & A with Barbara Viniar and TAA Members Lorraine and Stacy Shaw

Lorraine and Stacy Shaw and their boys, Avi and Hudson, joined Temple Anshe Amunim three years ago. You may have met the family at Passover and other events – Lorraine and Stacy have both become active volunteers. Avi, their eldest, is one of the students in the newly combined TAA and KI religious education program. According to Lorraine, who took time out from visiting her father in Mexico to answer some questions, he is already reaping the benefits.

How old is Avi?

Avi is 8. He'll be 9 in March. He's in 3rd grade.

How many years has he been attending religious education at Anshe?

This is his second year.

As a parent, what do you like about the collaborative education program with KI?

It exposes him (and the rest of our family!) to more young Jewish families in our area. We have felt very welcomed within the KI community and Avi is delighted to go to religious school on Saturdays.

What is Avi's favorite thing about it?

He loves learning, he loves hearing the stories and especially loves when they get to do art related to the stories they are learning about.

Can you tell us more about his experience baking banana bread?

*Avi was absolutely delighted to help make banana bread for Thanksgiving Angels. He came home that night and told us all about it - how much fun it was, the recipe they used, and most importantly **why** they were making banana bread. It was an excellent lesson in tikkun olam.*

How many children are in Avi's grade in the combined class?

I think 5 or 6.

How many would there have been if it were only Anshe members?

I think maybe 1 other besides Avi.

Is there anything you'd like to add?

Our experience in the joint programming with KI has been nothing but positive. We have been welcomed with open arms, kindness, understanding, and acceptance. I would not hesitate to attend other KI events that are jointly programmed or even just open to all families. While my beliefs are firmly Reform, I am happy to join in community with KI.



2023-24 Supplemental Dues Campaign

Double your gift to Temple Anshe Amunim!

Dear Temple Family,

Thank you!

Yes, thank you to all the donors who helped us reach our \$10,000 Supplemental Dues goal, which has already been matched by our generous donor family.

Now we need your help to reach our next goal of \$5,000, which will be matched dollar for dollar.

Temple Anshe Amunim relies on the income from this campaign to make up the revenues from families who cannot afford their full dues. Because we all care, no one is turned away from our community.

Please give now. Remember, every dollar will be matched! Let's not leave this generous offer unfulfilled. This is the perfect opportunity to double the value of your donation. Every gift, no matter how small, makes a difference.

Mail your check to Temple Anshe Amunim, 26 Broad St. Pittsfield MA 01201 or make a secure online donation at templeansheamunim.org/donate.

With gratitude,
Barbara Viniar
Temple President



Thank you to the following TAA members who have already generously donated!

Jackie Browner, Randy Johnson and

Ilsa Browner

Deb Cole-Duffy and James Duffy

Josh Cutler

Laura Feakes

Deborah Gallant and Jonathan Lieber

Ellen and David Gibbs

Joan and Paul Gluck

Brenda and Alan Gold

Carol Greenberg

Dr. Richard Greene and

Dr. Lindsay Crampton-Greene

Hope Hagler

Joel Karlin

Terri Needle and Martin Lecker

I. Kenneth and Barbara Mahler

Michael Margolis

Janie and Larry Pellish

Deborah and Sarah Pomerantz

Paula and Herbert Rod

Karen and Jeffrey Ross

Elizabeth Schneider and

Benjamin Liptzin

Laurie and Martin Schwartz

Nan Selkowitz Sisselman

Judy Stolzberg

Jennifer Streisand and Emil Venere

Henry Tulgan

Barbara Viniar

Barbara and Jesse Waldinger

Roberta Waller

Lanny Zuckerman

For Enjoyment and Relaxation - A Book Recommendation by Jen Streisand

In this entry, I recommend *The Jewish Mystical Tradition*, by Ben Z. Bokser, published in 1981. I have long been curious about Jewish mysticism, as I have not heard it discussed often in study groups or during services. So, what exactly is Jewish mysticism? In his book, Bokser (1907-1984) who was a prolific author, rabbi, and professor, provides a very good basic explanation of the subject, including an in-depth introduction.

While I previously thought that mysticism was just in the Kabbalah, after listening to the book, I learned that, in fact, there are examples of mysticism throughout traditional Jewish texts, beginning with the Tanakh (the Hebrew Bible), the Talmud, the Midrash, and so on. The author defines Jewish mysticism as "closeness to God," or "cleaving to God." Bokser writes that the Jewish mystic values the spiritual world more than materialism.

Early in the book, the author stresses that the Talmud generally favored the study of Torah and practicing of the commandments over mystical studies because Torah study was more rooted in the here and now, and not as other-worldly as mysticism. Furthermore, studying Torah allows a person to have a connection with God, even if it is an "indirect connection," writes Bokser. I have experienced this myself through participating in our Torah Study group at Anshe. Reading and discussing the Biblical text has allowed me time to contemplate the idea of God, and God's role in the lives of kings and ordinary people through the ages.

The book contains many representative writings from classical Jewish texts about mysticism. They are translated from the original Hebrew into English by the author, which seems a great achievement given the obscure nature of some of the language, as well as the sub-

ject. While mysticism is most often associated with the Kabbalah, its presence in the conventional Jewish texts make it part of our tradition, as Bokser wrote in the title of his book, *The Jewish Mystical Tradition*.

These representative writings begin in the Hebrew Bible. For example, in Daniel, Bokser points to a section where Daniel sees a vision of a man cloaked in robes, who clearly appears God-like. A conversation takes place between Daniel and the God-like man in robes on the subject of righteous behavior. What makes it seem mystical is the visionary nature of the scene, and the man is floating, rather than grounded like other men.

Bokser also discusses the prophets in the Tanakh, as perhaps being the first Jewish mystics, because they carried the word of God to the people, and seemed singled out to have a direct connection with God. Much later, in the Middle Ages, Jews who sought a closer connection to God than they were finding in current Jewish practice of the time, wrote the texts of the Kabbalah. Bokser says it emerged as a distinct movement in Jewish mysticism at the end of the 12th century with some scholars dating it even earlier. These writers and scholars of the Kabbalah are now often referred to as "Kabbalists" and sometimes achieved this more spiritual connection to God through a meditative state, and even paranormal activity, writes Bokser.

Some of the texts of the Kabbalah explored symbolism in the Hebrew alphabet and symbolism of names given to God. I found some of the representative writings of the Kabbalah included in Bokser's book difficult to understand, and would require further reading, but often the language was poetic and uplifting: "...You will take delight in the Lord, and he will fulfill the desires of



your heart. Surely you know, surely you heard, that the Lord is the everlasting God..."

Over time, the texts of the Kabbalah receded from mainstream Jewish life, but some of the ideas and practices were adopted into the mainstream. A good example of this is Hasidim, which emerged in Eastern Europe centuries after the texts of the Kabbalah first appeared. Bokser explains that Hasidim adopted ideas from the Kabbalah and has its origins in Jewish mysticism. So, while the Kabbalah receded from mainstream Judaism, Hasidim became a vital part of the mainstream, then and now.

Perhaps the Rabbinic consensus or the conventional view of Judaism is to stress the study of Torah, and practicing of the commandments over mysticism, because it provides a clear-cut way to live Jewishly - almost like a "how-to" guide. On the other hand, mystical studies have many more vague areas. However, there is something to "getting lost in the divine." To me, it promotes a dream-like state, and dreams not the kind of the Bible's Joseph, as in predicting the future, but dreams of things we desire-- whatever they may be--add sweetness to life, and that is a quintessentially Jewish idea.

Thank you to the National Library Service for the Blind and Print Disabled, Library of Congress for its vast collection of audio books where I found *The Jewish Mystical Tradition*. The National Library Service is supported in Massachusetts by the Perkins Braille and Talking Book Library.

The Israel-Hamas War & Our Struggle

LET'S TALK ABOUT IT!

We were horrified by the deliberately savage murder of over 1200 people, mostly civilians, in Israel and the kidnapping of over 200 hostages by Hamas on October 7. We are distressed by the deaths of many more Palestinians and the humanitarian crisis in Gaza in the wake of the Israeli response to the atrocities of October 7. Furthermore, we are troubled by attacks on Muslims and frightened by the marked increase in antisemitism in our own country since October 7. We cannot see a clear path to a peaceful co-existence among Jews and Palestinians in the Middle East. Often, we Diaspora Jews do not even agree among ourselves about an approach to this ongoing crisis.

Please join us for a discussion of the issues to be preceded by a screening of
"The Israel-Hamas War: Updates and Analysis (Part 3) with Aaron David Miller and Robert Siegel"

Sunday, 18 February, 12 noon

Temple Anshe Amunim

Please bring lunch or a snack.

This event is in-person only. Security will be provided.

To support a healthy and safe gathering, please adhere to the following **prerequisites**:

- Register your attendance by emailing Sherry, templeoffice@ansheamunim.org; also, include the names of any guest(s) you are inviting.
- Preview a background to recent Israeli/Palestinian history at:
<https://www.pbs.org/wgbh/frontline/documentary/netanyahu-america-the-road-to-war-in-gaza/>
- Be able to articulate what your curiosities are with respect to unfolding events.
- Uphold the spirit of our conversation, namely:
 - ◇ We will speak for ourselves and allow others to do the same, with no pressure to represent or explain others.
 - ◇ We will not criticize others' views or attempt to persuade them.
 - ◇ We will "listen with resilience" when something is hard to hear.
 - ◇ We will respect suggested timeframes and share airtime so all voices can be heard.
 - ◇ We will allow others to finish their speaking and not interrupt.
 - ◇ We will participate voluntarily and "pass" if we are not ready or do not wish to voice a thought.
 - ◇ When discussing our experience outside the group, we will speak in ways that do not allow participants to be identified.

— Rabbi Dr. Scott B. Saulson & Dr. Charles Wohl

2024 Temple Anshe Amunim Community Film Series

Sundays at 2 pm: February 25, March 10

Temple Anshe Amunim launches a new community winter film series beginning Sunday, January 21, 2024. The new series will present a selection of powerful films from around the world which explore the Jewish experience, including the latest works by dynamic voices in international cinema.

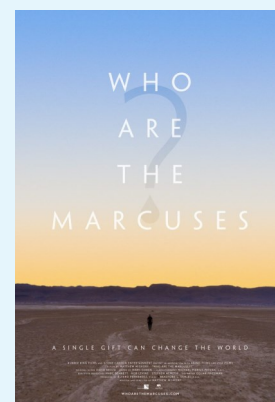
The film series will feature in-person screenings at Temple Anshe Amunim, 26 Broad Street, Pittsfield, MA. Following the screening of each film, discussions will be led by filmmakers and/or experts in the subjects addressed by the film.

Please register/purchase tickets in advance. For Series Ticket \$25/\$30, please call the office.

Members - \$10 each or \$25 for all three films **Non-members** - \$12 each or \$30

Tickets can be purchased at www.ansheamunim.org/filmseries

Sunday, February 25 at 2 PM – *Who Are the Marcuses?* (2023) Documentary by Matthew Mishory, featuring Warren Buffett, Ellen Marcus, Pres. Isaac Herzog, Seth M. Siegel, E. Randol Schoenberg, Daniel Gordis, and Micah Goodman. This documentary not only tells the story of the mysterious Marcuses and their secret philanthropic gift, but also takes on crucial universal topics of climate change and water conservation. www.ansheamunim.org/event/filmseriesmarcus



Sunday, March 10 at 2 PM – *The Devil's Confession: The Lost Eichmann Tapes* (2023) Documentary by Yariv Mozer. This film exposes Eichmann, in his own voice, stunningly contradicting his claims made during the trial. These tapes, recorded in Buenos Aires in 1957 by Dutch journalist and Holocaust denier Villem Sassen, form the basis of a new feature documentary from Israel. The result is a film which not only sheds light on the hidden forces that concealed the recordings, altering the arc of history as we have understood it for more than 70 years, but also provides irrefutable proof against Holocaust denial and the pernicious antisemitic hatred from which it springs. www.ansheamunim.org/event/filmserieiseichmann



For sponsorship opportunities, please contact the office at (413) 442-5910

A Calendar of Opportunities 5784@TAA

Shabbat Eve Celebration 	Fri, 5.30pm First Fridays - Soup and Naan Oneg \$5 per person
Exploring Torah 	Sat, 9.30am [zoom option]
Special Observances 	Purim, Fri, 3/22, 5.30pm Passover Seder, Tue, 4/23, 5.30pm Yom Ha'sho'ah, Fri, 5/3, 5.30pm Israel Independence, Fri, 5/10, 5.30pm Shavu'ot, Fri, 6/7, 5.30pm
Winter @ TAA Cine 	Sun, 2.00pm <i>Who Are the Marcuses?</i> [documentary] February 25, 2024 <i>The Devil's Confession: The Lost Eichmann Tapes</i> [documentary] March 10, 2024 Tickets: Members: \$10 each Non-members: \$12 each
Learning for the Mature 	Lunch and Learn: Learn to Love Our Siddur, 4 week program beginning Thursday February 8 at noon. Ethical Wills Workshop, Sat, 2/10 ff., 11.00am [in person only] NJOP Crash Course in Hebrew - 5 weeks beginning February 27 at 10:30 am Oral History & Legacy Writing Workshop with Adam Phillips March 5 from 1 to 4 PM Cost \$15 per person Lectures by Robyn Rosen TBD
Governance 	Management Team, 1st Thu, 7pm Board Mtgs, 2nd Thu, 7pm Annual General Meeting, Thu, 6/13, 7.00pm
Social Justice/ Action 	Berkshire County Diaper Project - March and April Berkshire Pride Parade - June 8 Rise Up for Justice with Elizabeth Freeman Center - September (Date TBD)

2023 - 24 Management Team & Trustees

Barbara Viniar
President

Larry Pellish
Treasurer

Jon Lieber
Assistant Treasurer

Michael Duffy
Recording Secretary

Lanny Zuckerman
Immediate Past President

Lesley Beck
Trustee

Josh Cutler
Trustee

Joan Gluck
Trustee

Joel Karlin
Trustee

Michael Margolis
Trustee

Robyn Rosen
Trustee

Judy Stolzberg
Trustee

Charles Wohl
Trustee

Committees

Budget

Larry Pellish

Caring

Alba Passerini
Jane Pellish

Cemetery

Joel Karlin

Finance Committee

Larry Pellish

Hilda Vallin Feigenbaum

Memorial Lecture

Josh Cutler

House

Alba Passerini

Membership

Julie Cutler
Judy Stolzberg

Social Action

Janie and Larry Pellish

Worship Committee

Lesley Beck

All board members and committee chairs can be reached through the temple office. Please call the temple office at (413)442-5910 or send an email to: templeoffice@ansheamunim.org

Todah Rabah - Thank you!
Please Contribute to Any Temple Anshe Amunim Fund.

All donations are gratefully appreciated.

To donate now, please visit <https://www.ansheamunim.org/donate>

All donations to Mitzvah funds support immediate Temple needs.

Mitzvah Fund: Donations to the Mitzvah fund provide support for:

- Commemoration of happy events both large and small; Onegs and Pre-Negs.
- Expenses related to cantorial, Temple music and the choir.
- Remembrances at services (yahrzeits) and in the Bulletin for loved ones who have passed away.
- Basic religious school expenses.
- Purchasing new books for the library.
- The purchase, repair, and maintenance of Temple art.
- Capital maintenance and repair of the Temple building and memorial boards.
- Daily operations.

Dedicated Prayer book, Tanakh (Bible) minimum donation is \$36, or
Women's Torah Commentary Fund minimum donation is \$50:
Purchases new books with a dedication plate.

Rabbi's Discretionary Fund: to be applied for the benefit of the Temple.

Endowment & Restricted Funds Descriptions:

The Roslyn G. (Roz) Citrin Cantorial Endowment Fund: Donations to this fund will provide annually, for the beauty of Cantorial music and song to enhance our High Holy Days and special worship.

Rabbi Harold & Audrey Salzmänn Religious School Endowment: To support Religious School programming, retreats and trips.

Lynn Denmark/Faith Newmark Endowment: To support the Religious School, as determined by Women of Reform Judaism.

Shaun Beckwith-Chasen Campership Fund: Scholarships for attendance at Eisner/Crane Lake Camp.

Elise & Moe England Religious School Scholarship Fund: Scholarships for religious school attendance.

Jeff Stolzberg Campership Fund: Scholarships for attendance at Eisner/Crane Lake Camp.

Henry & Dorothy Halperin Fund: For children's Simchat Torah celebration.

Dan and Edna Miller Building Fund: For maintenance, renovations and improvements to the Temple.

Individual Endowments: Set up by individuals, these funds are part of the main Temple endowment and support ongoing operations and

Tree-of-Life in honor of, or in memory of: Inscribed leaf to honor the life or memory of a specified person or people on the Temple's Tree of Life. (\$125)

Yahrzeit Plaques: To honor the memory of an ancestor or other family member to be displayed on the memorial board in the lobby. (\$350)
Please complete form from the office for leaf or plaque and submit with your contribution.

***All donations will be acknowledged in the Bulletin.
Acknowledgements will also be sent to the honoree or family.***

TEMPLE ANSHE AMUNIM CONTRIBUTION FORM

Donor Name (s): _____

Today's Date: _____ **Amount: \$** _____ **Method of Payment:** cash _____ check _____ credit card _____

1. In honor of/ in memory of : _____
(circle one) Name Yahrzeit Date/reason for honor (circle one)

Relationship to Donor To Fund (from above)

2. In honor of/ in memory of : _____
(circle one) Name Yahrzeit Date/reason for honor (circle one)

Relationship to Donor To Fund (from above)

Mitzvah Fund

In loving memory of Irwin Browner
Jackie and Ilse Browner and Randy Johnson

In loving memory of Geraldine Baeder
Jackie and Ilse Browner and Randy Johnson

In honor of Barbara Viniar and Lanny Zuckerman and our Board of Trustees for their excellent leadership
Jackie and Ilse Browner and Randy Johnson

In honor of Sherry Boullt and Dave Wallace for all their hard work and taking care of our Temple
Jackie and Ilse Browner and Randy Johnson

In loving memory of Melinda Tanzman
Josh Cutler

In honor of Dr. Alan Gold's retirement from his dentistry practice
Josh Cutler

In loving memory of Geraldine Baeder
Josh Cutler

Winter Coat Fund

Jen Streisand and Emil Venere

Memorial/Yahrzeit Fund

In loving memory of Elinor Baker
Bob Baker, Patti and Steve Silver

In loving memory of Joseph K. Handler
Mary Jane Handler

Winter Fuel Assistance Fund

Jen Streisand and Emil Venere



Birthdays

Yom Huledet Sameach!

**Happy Birthday to
our members
and friends**

**February 2
Richard Gagnon**

**February 5
Tom Gilbert**

**February 7
Martin Lecker**

**February 8
Michael Shreefter
Jen Streisand**

**February 16
Mark Franklin**

**February 17
Alan Gold**

**February 21
Jonah Alemany**

**February 24
Jacqueline Browner**

**February 25
Eric Drayman**

**February 27
Harry Rich**

Anniversaries

**February 26
Deborah Gallant and
Jonathan Lieber**

February Yahrzeits

We hold in loving memory:

Feb 1/22 Shevat
Sophie Bloch

Feb 2/23 Shevat
Katherine Small
Ruth Cohen
Herman Zuckerman

Feb 3/24 Shevat
Carole Sandrew

Feb 5/26 Shevat
Sylvia Singer
Jacob Abraham Evenchik

Feb 6/27 Shevat
George Hoffman

Feb 7/28 Shevat
Seymour Wasserman
Matthew Rich

Feb 11/2 Adar I
Lilly Borak

Feb 12/3 Adar I
Rebecca Chesney
Shirley Molner

Feb 13/4 Adar I
Berta S. Cole
David Kaplan

Feb 17/8 Adar I
Grace Gilbert
Bluma Schonbrun

Feb 18/9 Adar I
Israel Perry

Feb 21/12 Adar I
Stanley Winn

Feb 23/14 Adar I
Irwin Browner

Feb 24/15 Adar I
Rachel Bartfield

Feb 25/16 Adar I
Barnet Rod
Edmund M. Poopor

Feb 27/18 Adar I
David Tanzman

Feb 28/19 Adar I
Louis Bloch

Feb 29/20 Adar I
Sidney Rod

*Please
remember
Temple Anshe
Amunim
in your will.*

Yahrzeit Plaques

Yahrzeit Plaques honor the memory of an ancestor or other family member. Each plaque is \$350.

For more information or to request an order form, please call the Temple office at (413) 442-5910.

Yahrzeit Donations - It is customary to make a donation on the occasion of your loved one's Yahrzeit.

Yahrzeit dates -Yahrzeits are based on the Hebrew or Gregorian (English) date, depending on family preference. If there are any omissions or errors, please call the Temple office at (413) 442-5910.

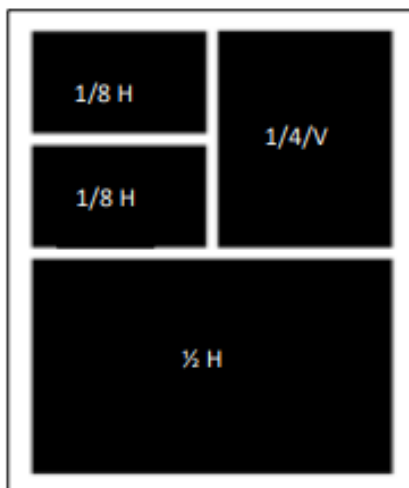




ADVERTISE WITH TEMPLE ANSHE AMUNIM!

Your ad can go in our monthly bulletin, sent out to our entire congregation.

Full color ads for low prices!



1/8-page H, \$36.00

1/4-page V, \$54.00

1/2-page H, \$126.00

Please reserve your space and have your camera-ready art to us by the 15th of the month preceding the month you would like your ad to run.

templeoffice@ansheamunim.org.

PDF, TIF, or high-resolution JPEG only. NO word documents, please.

Please include this form with your payment to the attention of: Office Manager

Temple Anshe Amunim
26 Broad Street
Pittsfield, MA 01201

Business Name: _____

Contact Person: _____

Phone: _____

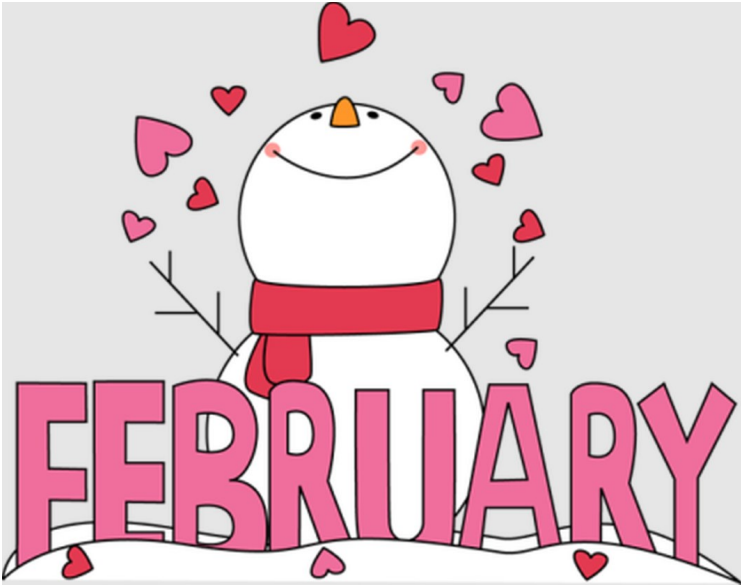
E-mail: _____

Month(s)/Year for ad to run: _____

Total Amount Enclosed: _____

For any questions, please contact the Temple Office at (413) 442-5910

SUN	MON	TUES	WED	THU	FRI	SAT
<div>28</div> <div>Shevat 18</div>	<div>29</div> <div>Shevat 19</div>	<div>30</div> <div>Shevat 20</div>	<div>31</div> <div>Shevat 21</div>	<div>1</div> <div>Shevat 22</div>	<div>2</div> <div>Shevat 23</div> <div>5:30pm Erev Shabbat Service</div>	<div>3</div> <div>Shevat 24</div> <div>9:30am Torah Study</div>
<div>4</div> <div>Shevat 25</div>	<div>5</div> <div>Shevat 26</div>	<div>6</div> <div>Shevat 27</div>	<div>7</div> <div>Shevat 28</div>	<div>8</div> <div>Shevat 29</div> <div>12:00pm Lunch and Learn Roundtable with Rabbi Scott: Learn to Love Our Siddur</div>	<div>9</div> <div>Shevat 30</div> <div>5:30pm Erev Shabbat Service</div>	<div>10</div> <div>Adar I 1</div> <div>9:30am Torah Study 10:45am Ethical Wills Workshop - 6 week series</div>
<div>11</div> <div>Adar I 2</div>	<div>12</div> <div>Adar I 3</div>	<div>13</div> <div>Adar I 4</div>	<div>14</div> <div>Adar I 5</div>	<div>15</div> <div>Adar I 6</div> <div>12:00pm Lunch and Learn Roundtable with Rabbi Scott: Learn to Love Our Siddur</div>	<div>16</div> <div>Adar I 7</div> <div>5:30pm Erev Shabbat Service</div>	<div>17</div> <div>Adar I 8</div> <div>9:30am Torah Study 10:45am Ethical Wills Workshop - 6 week series</div>
<div>18</div> <div>Adar I 9</div> <div>Israel-Hamas War: An Exchange of Ideas. In person only at TAA at noon.</div>	<div>19</div> <div>Adar I 10</div> <div>President's Day Office Closed</div>	<div>20</div> <div>Adar I 11</div>	<div>21</div> <div>Adar I 12</div>	<div>22</div> <div>Adar I 13</div> <div>12:00pm Lunch and Learn Roundtable with Rabbi Scott: Learn to Love Our Siddur</div>	<div>23</div> <div>Adar I 14</div> <div>Purim Katan 5:30pm Erev Shabbat Service</div>	<div>24</div> <div>Adar I 15</div> <div>9:30am Torah Study 10:45am Ethical Wills Workshop - 6 week series</div>
<div>25</div> <div>Adar I 16</div> <div>2:00pm TAA Film Series 2024 - Who Are the Marcuses?</div>	<div>26</div> <div>Adar I 17</div>	<div>27</div> <div>Adar I 18</div> <div>10:30am Crash Course - Hebrew 1 (5 week series)</div>	<div>28</div> <div>Adar I 19</div>	<div>29</div> <div>Adar I 20</div> <div>12:00pm Lunch and Learn Roundtable with Rabbi Scott: Learn to Love Our Siddur</div>	<div>1</div> <div>Adar I 21</div> <div>5:30pm Erev Shabbat Service</div>	<div>2</div> <div>Adar I 22</div> <div>9:30am Torah Study 10:45am Ethical Wills Workshop - 6 week series</div>





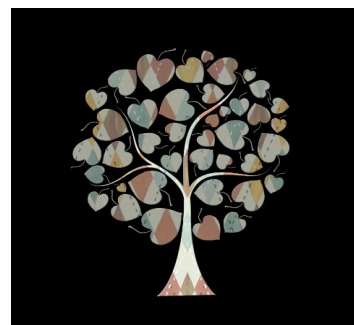
Caring Committee

The members of Temple Anshe Amunim are a community. Part of the purpose of our Caring Committee is to help members of our community in times of need. To perform that function, we need to know when our members are in need. It has come to our attention that there have been times when a member was in need, would have liked the Caring Committee to reach out and help, even expected the Caring Committee to reach out and help, but we were never aware of the situation. We urge members in need to inform us of your situation. Be assured that we are here for you.

We realize that in the immediacy of the moment, a person in need may be too preoccupied or too reticent to reach out to us. So, we request that if any member becomes aware that another member is in need, please let us and/or the Rabbi know.

We are here for you as you are here for us.

Alba Passerini (alba.passerini@yahoo.com) & Janie Pellish
(randeb66@verizon.net)



Thank You!
FOR YOUR DONATION

Help Us Acknowledge Donations

Donations are the lifeblood of the Temple and are most appreciated! Please help us acknowledge you properly by completing the Donation Form online or provided in the Bulletin. If you choose to send a check, please include a note to specify your elected donations.

Please be aware that bank-generated checks don't specify the purpose of the payment. If you are sending a donation through the bank, please use the "memo" line, if available, or contact the Office to ensure that your payment is recorded and acknowledged as you intended.

BULLETIN NEWS!

THE BULLETIN IS NOW BEING SENT
ELECTRONICALLY

PLEASE EMAIL THE TEMPLE OFFICE AT:
TEMPOFFICE@ANSHEAMUNIM.ORG

IF YOU WOULD LIKE TO
RECEIVE A HARD COPY,
WE ARE HAPPY TO PROVIDE ONE!



Due Date

The bulletin has returned to monthly publication. All articles must be received by the 15th of the preceding month to be included in the next month's edition.

Thank you.