

INSIDE THIS ISSUE:

- Page 2**
Shabbat Togetherness
- Page 3**
President's Message,
Board Actions
- Page 4**
Passover Info
- Page 5**
Haggadah, Rabbi's
Message, con't
- Page 6**
Pathways to Our Future
- Page 7**
Pathways, con't,
Annual Meeting Info
- Page 8**
Social Action
- Page 9**
Community Havdalah
- Page 10**
Matching Grant
- Page 11**
Joint Purim Event
- Page 12**
Disposal of Sacred Texts
- Page 13**
Learn Hebrew, Camp
Scholarship
- Page 14**
Chant and Chocolate
- Page 15**
Cantorial Soloist Welcome
- Page 16**
Long Range Calendar
- Page 17**
Book Review
- Page 18**
Lay Leadership
- Page 19**
Donation Form
- Page 20**
Temple Donations
- Page 21**
April Milestones
- Page 22**
Place an Ad
- Page 23**
Monthly Calendar
- Page 24**
Caring Committee and
TAA Information



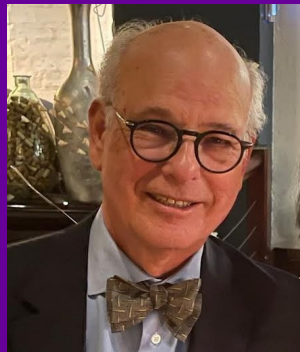
Temple Anshe Amunim

26 BROAD STREET | PITTSFIELD, MA 01201

(413) 442-5910 | TEMPLEOFFICE@ANSHEAMUNIM.ORG

WWW.ANSHEAMUNIM.ORG

APRIL 2024 | 22 ADAR II - 22 NISAN



Rabbi Dr. Scott B. Saulson

Gender fluidity: What is it ?

Pope Francis has earned the admiration of numerous Catholics and non-Catholics alike as the Holy See's air freshener. On the other hand, he has

sparked the ire of many of the "faithful" who claim to be the true heirs of Jesus' love. Ironically, maybe the latter will be assuaged by the Pontiff's recent proclamation about gender fluidity: "The ugliest danger of our time, because it cancels out all differences that make humanity." We might well ask what actual evidence has the pope to support his claim. After all, his is not the only claim in circulation.

Indeed, hypotheses abound about both the meaning and the implications of gender fluidity:

A wholesome response to an inner voice?

A struggle to individuate from oppressive family cohesion?

A manifestation in the individual of societal fragmentation and angst?

An imbalance amenable to surgery or psychotherapy?

A cry for recognition of personhood embedded in the very diversity of our species?

Quite apart from Francis' theological condemnation, shouldn't we be horrified that gender fluidity is a life-threatening matter in such places as

Nigeria, Saudi Arabia, The West Bank & Gaza, Malaysia, Malawi, Myanmar, Jordan and Iran, and a painful matter in such nations as Italy, Macedonia, Poland and Russia?

Whatever the hypothesis, our Talmudists, who clearly favored patriarchy, viewed gender fluidity as a natural phenomenon. Not only did the rabbis recognize six genders that were neither male nor female, they had a tradition that the first human being was both. <https://www.myjewishlearning.com/article/the-eight-genders-in-the-talmud/>

As members of this faith tradition, are we outliers? Perhaps so. A Jewish joke, as old as the Catskills, goes like this: Students of various nationalities are assigned to write an essay about elephants. The Englishman writes "Hunting the Elephant," the Frenchman, "The Love Life of the Elephant," and the Jew, predictably, produces "The Elephant and My Jewish Problem." The joke teases out our trait of self-absorption.

Continued on page 5



Shabbat Togetherness

Friday, April 5

5:30 p.m. - Erev Shabbat Celebration

*Followed by Soup and Naan Oneg

Saturday, April 6

9:30 a.m. - Torah Engagement

Friday, April 12

5:30 p.m. - Erev Shabbat Celebration

Saturday, April 13

9:30 a.m. - Torah Engagement

Friday, April 19

5:30 p.m. - Erev Shabbat Celebration

Saturday, April 20

9:30 a.m. - Torah Engagement

Friday, April 26

5:30 p.m. - Erev Shabbat Celebration

Saturday, April 27

9:30 a.m. - Torah Engagement

*First Friday Soup and Naan Oneg!

April 5



Can't make it in person?
Don't forget that Friday night services are on Zoom or live-streamed.

Please note that services will be held in person and virtually. For technical assistance, please contact: Dave Wallace (413) 822-8259

What's a Crocus?



Barbara Viniar

To My Temple Family,

I recently told a Floridian that I had timed my return to the Berkshires to see the first crocus. "What's a crocus?" she asked.

And in the same way that the winter holidays in Florida seem incomplete without snow, evergreens and wood smoke, spring comes with little change here. I miss the days when the air seems lighter and green shoots appear as the snow recedes.

My friends tell me I will be too late this year. The bulbs are already in bloom. In a year when Passover is later than usual because of the second Adar, spring came earlier.

What have we done, I wonder? Is this an anomaly or "the new normal?" In Genesis, God gives "dominion" over the earth to humans. There is a midrash that says,

however, that God led Adam past all the trees in the Garden of Eden and told him, "See how beautiful and excellent are all My works. Beware lest you spoil and ruin My world. For if you spoil it there is nobody to repair it after you."

I am worried about the world I am leaving my grandchildren. Is it too late to repair it? Tikkun Olam is central to our Jewish identity, but the state of the world feels so broken to me right now I don't know what I can contribute to fixing it.

The liberation from Egypt that we will celebrate this month was only the start of our journey to the promised land. We are still traveling. We are still imperfect. But perhaps together we can make a difference.

Board Actions

There are no Board Actions to report.

The board meets the second Thursday of the month. The next meeting is April 11, 2024.

CELEBRATE PASSOVER WITH TEMPLE ANSHE AMUNIM



A meal to commemorate.
A meal to share.
And a meal for dipping
— more than once, more than twice —
into a condiment you will offer, as well.
A seder with a difference!

Tuesday, April 23, 5.30pm

To get us in the mood for our communal seder, I am asking each of you (and your guest, if you have one), to prepare two items to share at our seder.

A recollection of lasting impression made on you because of an encounter with a perfect stranger; and a poem (your own or another's) expressive of any one of these themes:

- | | | | |
|-------------|---------------|---------------|------------|
| ·Liberty | ·Sweetness | ·Gefilte fish | ·Sharing |
| ·Tradition | ·Gratitude | ·Childhood | ·Discovery |
| ·Bitterness | ·Matzah balls | ·Servitude | |

I look forward to our sharing your contributions at the Feast of Our People.

— Rabbi Scott ssaulson@bellsouth.net

Menu: Kosher style meal

- | | |
|---------------------------------|-------------------------------|
| • Homemade charoset | • Vegetarian entrée |
| • Chicken soup and matzah balls | • Salad |
| • Gefilte fish | • Wine |
| • Turkey | • Seltzer, juice, coffee, tea |
| • Brisket | • Potluck dessert table |

Prices: Adult \$36/member, Child to 18, free
Adult \$54/non-member, Child 5-18, \$10

[Click here to register](#)

Supported by a generous donation from
the Dorothy and Henry Halperin Fund

For information, please contact
the office: (413) 442-5910
templeoffice@ansheamunim.org





Though you'll search for the afikomen, you need not search for Haggadahs for your 1st night home seder. We have a selection for you to borrow and, of course, return, even if wine-stained here and there. If you prefer, you can go to Haggadot.com and create your own!

Rabbi Scott

Rabbi's Message

continued from page 1

This trait draws on a recurrent anxiety rooted in a collective memory substantiated by the ever mutating virus of antisemitism. Whenever and wherever the tides of societal upheavals lap our polity, we have firm reason to ask, "Is it good for us?" After all, more of a fact than a proverb, we still are a "canary in the coal mine."

Ah, but let's set aside our myopia for a moment!

There is another canary in the coal mine, one less schooled in adapting to the ebb and flow of bigotry. Indeed, a canary far less likely to flutter out of the coal mine even as the toxic fumes intensify. And, certainly, it doesn't have a homeland to call its own. That other canary are strangers and people quite close to us who are gender fluid in the broadest sense of that descriptive.

The political implications should be clear. In general, I am not a fan of one-issue politics. Nevertheless, here and now, candidates who subtly or boldly bash gender fluidity, or use it in its various guises as wedge issues, or hobnob with those who do, are menaces to the bedrock of democracy and the stability of humaneness. Under no circumstances can they count on my vote.

-- Rabbi Dr. Scott B. Saulson

Pathways to Our Future

Barbara Viniar

Since October, the leadership of Temple Anshe Amunim has been exploring 3 possible pathways to a future that enables us to get out from under the burden of an old building that has become increasingly costly and far exceeds the space requirements of our current membership. In the fall, we repaired the roof. An estimate to replace it, which will soon be necessary, is over \$400,000. Just a few weeks ago we had to fix a leak around the skylight.

The first path we have been exploring is to find a tenant to contribute to the maintenance of the building. We have reached out and fielded inquiries from some local non-profits, but no concrete proposal has emerged from these efforts. In addition, having a tenant would most likely require some modifications and changes to staffing and security. These drawbacks notwithstanding, we have not rejected this possibility.

We have also looked into the possibility of buying a smaller build-

ing. Lesley Beck researched the cost of purchasing a residence near our current location. Given sales prices in recent years, we may be able to purchase something sufficient for our needs and use the proceeds from the sale of 26 Broad Street for renovations. We have consulted a developer and a commercial realtor about selling our building, which would most likely be converted to condos.

Finally, we have discussed the possibility of co-locating with Knesset Israel. We have had a joint meeting of both boards and two meetings of smaller groups. **THESE ARE DISCUSSIONS ONLY. NO DECISIONS HAVE BEEN MADE. And, I will stress again, there is no consideration of merging, only sharing space in a way that preserves the identity and legacy of Anshe Amunim.**

There are challenges to co-locating with a conservative congregation, such as maintaining Kashrut. However, we have had nothing but

positive conversations about respecting our Reform practices and meeting the needs of our interfaith families. Rabbi Weiner has personally reached out to several members of our congregation.

It now appears that the costs of fully renovating KI with an elevator and a modified lower level are cost prohibitive. We are in the process of discussing other, more limited options.

One extremely positive thing that has already occurred as a result of these discussions is our religious school collaboration. Again, we have not joined their school. The children have some activities in common and some separately. Our small number of children have discovered Jewish children their age and made new friends.

Another joint effort was the Purim concert, when Josh Cutler and Mike Duffy joined the KI band. Both congregations agree that regardless of our decision

Continued on page 7

Pathways to Our Future

continued from page 6

about location, this collaboration enhances opportunities for celebrating and learning together.

I recognize that you have many questions and concerns. On May 2, we will hold a congregational meeting which I hope will address them. The meeting

will be at 7PM in person and on Zoom. It will be recorded and available to anyone who cannot attend. In addition to the TAA board, the leadership of Knesset Israel will be present to answer your questions. This meeting precedes the annual meeting in June so that everyone will have the information

they need if the board brings any action for a vote. At this time, we are not sure what that vote might be.

I look forward to seeing you at the May meeting. If you have questions or concerns before then, please leave me a message at the office and I will get back to you.

Temple Anshe Amunim Upcoming Meetings



Please save the date!

Congregational Meeting: Paths to the Future
Thursday, May 2, 2024 at 7:00 PM

TAA Annual Meeting
Tuesday, June 18, 2024 at 7:00 PM

We hope to see you there!

NJOP Hebrew Reading Crash Course Level II

Our Hebrew Reading Crash Course Level I went so well that we are continuing onward!



Do you want to

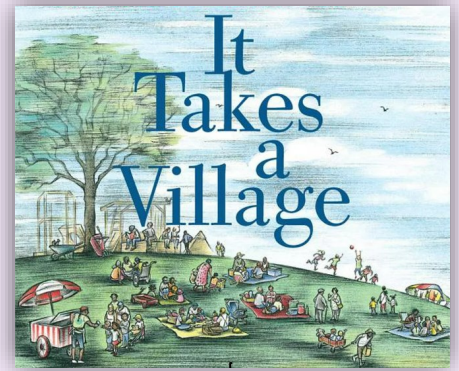
- ◆ Brush up on your Hebrew?
- ◆ Follow along more easily during services?
- ◆ Make new friends?

Classes will begin on May 7 at 10:30 am.

Please contact the office with any questions.

Free of charge.

Social Action



In March and April, the Social Action Committee is having a drive to support the Berkshire Community Diaper Project (BCDP). Diaper need can cause significant depression in parents and potential health and mental issues for their children. Low-income families frequently struggle to buy diapers, which cost more than \$100 per month per child. Diapers are not covered by the WIC Program, the federal program supporting low income earning women and their children up to age 5; nor by SNAP, Supplemental Nutrition Assistance Program, otherwise known as food stamps. Without a supply of disposable diapers provided by parents, infants and toddlers are not allowed to attend daycare. Without daycare, parents cannot work to provide diapers and other essentials.

All funds go directly toward purchasing diapers for babies and toddlers in need. The diapers are distributed throughout Berkshire County to sites including the South Congregational Church, the Elizabeth Freeman Center, the Family Center of North Berkshire County, the Family Resource Center in Gt. Barrington, Manos Unidos, Jewish Family Services for

refugee families, Gladys Allen Brigham Center, and all three WIC offices. Since BCDP's inception in September 2014, 2 million diapers have been given away.

You can either send a monetary donation or drop off diapers. Please send all checks to the TAA office. The checks can be made out to TAA indicating in the memo section that the check is for BCDP. BCDP is able to purchase diapers at a marked discount. Diapers, including open packages, can be dropped off at TAA.

Another opportunity to contribute is to purchase books at the book sale currently taking place at TAA. All proceeds will go to the BCDP Drive.

The Temple is open Mondays - Fridays, 10am - 3pm.

Our continued thanks for the support of Rabbi Scott, Dave, Sherry, and the TAA congregation.

Janie & Larry Pellish
Co-Chairs

Thank you for your support of this project!

Nan Sisselman
Debbie Pellish, Mike Schreiber, and Leo Schreiber
Anonymous

Community Havdalah at TAA



Havdalah (left to right) Rabbi David Weiner of Congregation Knesset Israel, Rabbi Daveen Litwin of Jewish Federation of the Berkshires, Rabbi Jodie Gordon of Hevreh of Southern Berkshire, Rabbi Barbara Cohen of Congregation Ahavath Sholom, Rabbi Neil P.G. Hirsch of Hevreh of Southern Berkshire, Rabbi Dr. Scott Saulson of Temple Anshe Amunim

Below, attendees enjoying the concert



Below, The Cantilena Chamber Choir, led by Andrea Goodman



2023-24 Supplemental Dues Campaign

Double your gift to Temple Anshe Amunim!

Dear Temple Family,

Thank you!

Yes, thank you to all the donors who helped us reach our \$10,000 Supplemental Dues goal, which has already been matched by our generous donor family.

Now we need your help to reach our next goal of \$5,000, which will be matched dollar for dollar.

Temple Anshe Amunim relies on the income from this campaign to make up the revenues from families who cannot afford their full dues. Because we all care, no one is turned away from our community.

Please give now. Remember, every dollar will be matched! Let's not leave this generous offer unfulfilled. This is the perfect opportunity to double the value of your donation. Every gift, no matter how small, makes a difference.

Mail your check to Temple Anshe Amunim, 26 Broad St. Pittsfield MA 01201 or make a secure online donation at templeansheamunim.org/donate.

With gratitude,
Barbara Viniar
Temple President



Thank you to the following TAA members who have already generously donated!

Jeffrey Borak

Jackie Browner, Randy Johnson and

Ilsa Browner

Deb Cole-Duffy and James Duffy

Josh Cutler

Laura Feakes

Deborah Gallant and Jonathan Lieber

Ellen and David Gibbs

Joan and Paul Gluck

Brenda and Alan Gold

Carol Greenberg

Dr. Richard Greene and

Dr. Lindsay Crampton-Greene

Hope Hagler

Joel Karlin

Terri Needle and Martin Lecker

I. Kenneth and Barbara Mahler

Michael Margolis

Henry and Rebecca Pearson

Janie and Larry Pellish

Deborah and Sarah Pomerantz

Paula and Herbert Rod

Karen and Jeffrey Ross

Elizabeth Schneider and

Benjamin Liptzin

Laurie and Martin Schwartz

Nan Selkowitz Sisselman

Judy Stolzberg

Jennifer Streisand and Emil Venere

Henry Tulgan

Barbara Viniar

Barbara and Jesse Waldinger

Roberta Waller

Lanny Zuckerman

Joint Purim Concert TAA&KI



Josh Cutler on guitar, Simeon Bittman on drums



Michael Duffy on guitar, Colin Ovitsky on bass



Having fun together - the bandmembers of TAA and KI



Disposal of Sacred Texts

In keeping with customary practice, which honors the people dedicated to the publication of liturgical and toraitic texts throughout the centuries, we'll gather at our section of the Pittsfield Cemetery for the burial of these worn and dated materials.

Sunday, 28 April

11.00am

Pittsfield Cemetery

203 Wahconah Street

(Rain or Shine)

Should you have such texts of your own, you are welcome to bring them with you directly to the cemetery to include in this special interment.

To help us prepare for this event, here is a bit of background excerpted from <http://www.myjewishlearning.com/article/ask-the-expert-burying-the-genizah/>.

The Talmud (*Shabbat* 115a) stipulates that all sacred writings (scrolls of Torah, Prophets, and Writings), should be preserved in a place where they cannot be destroyed. Though this idea was originally

closely tied to a prohibition from ever erasing God's name, Maimonides ruled that holy books, such as the Talmud and midrash, should be retired to the genizah (meaning hidden place) as well, even though they do not contain God's name. (*Mishneh Torah, Hilkhot Yesodei HaTorah* 6:8)

For a long time, Jewish communities set aside a room in each synagogue exclusively for this purpose and called that space the genizah. Anything from a worn-out siddur to a contract written in Hebrew would be put in the genizah when it was no longer useful, and often ritual objects, such as a tallit or a lulav, were added as well. Today, most synagogues have a closet or a box where they collect used papers and ritual objects that are considered sacred. The general rule is that anything dealing with sacred subjects should be placed in a genizah, rather than thrown out. Most synagogues clean out their genizot every few years, by burying the contents in a Jewish cemetery as a sign of reverence and respect. Some communities even have cemetery plots that have been donated expressly for the purpose of burying the genizah. It is considered a great sign of respect to bury a Torah scroll or other sacred work near a prestigious Torah scholar. However, one may bury such items in one's own backyard, as long as it is done respectfully.

— Rabbi Scott

IN HONOR OF YOM HASHOAH HOLOCAUST REMEMBRANCE DAY



Songs of the Lost Communities

Concert and Memorial Candle Lighting
Sunday, May 5 at 2 pm

The Berkshire Museum, 39 South Street, Pittsfield

Performing artist and lecturer Laura Wetzler will share the music and history of Sephardic and Ashkenazi communities celebrating the vitality of prewar Jewish life. Laura's father Rudi was a Nazi era survivor from Frankfurt, Germany.

AFTER THE CONCERT

A candle lighting, prayers, and a moment of reflection in memory of the victims of the Holocaust.



Jewish Federation
OF THE BERKSHIRES

THE **STRENGTH** OF A PEOPLE.
THE **POWER** OF COMMUNITY.

Camperships

For those already planning for the summer, a reminder that Temple Anshe Amunim has two camp scholarship funds.

The Stolzberg campership fund will provide a scholarship for attendance at any Jewish oriented camp.

The Shaun Beckwith-Chasen campership fund specifically provides a scholarship for attendance at Camp Eisner in Great Barrington. Please apply by March 31, 2024.



For more information, please contact Larry Pellish, Treasurer at ljpellish@gmail.com.



CHANT AND CHOCOLATE

- Bring your voice and intention to experience the deep relaxation of mind, body and soul through chant
- Connect energetically to our inner being, to each other, to the earth and to all humanity
- Notice how pain, tension, and emotional stress disappear
- Indulge in a chocolate treat for spiritual sweetness

Chant for love, peace, healing, renewal and hope

No previous singing or chanting experience necessary

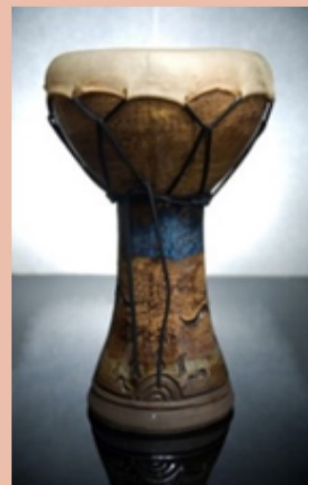
WHEN: Wednesday, June 12, 7:30 pm - 9:00 pm

WHERE: Temple Anshe Amunim
26 Broad Street, Pittsfield

COST: FREE

LEAD BY: Eva Friedner, Chant Leader since 2006

For more information call Eva at (508) 212-9460
or Temple office at (413) 442-5910



Welcome to our Cantorial Soloist



We are pleased to welcome Cantorial Soloist
Kathy J. Barr
who will join our temple family this year for our
High Holy Days

Cantor Kathy J. Barr was ordained by The Academy for Jewish Religion, a seminary dedicated to Jewish pluralism near New York City. This program, which favors an inclusive approach to training its prospective members of the clergy, welcomes the differences between people while also emphasizing their shared values. Her worship style is one of inclusion, blending the contemplative with joyful participation, believing that music is the language of the soul, and through music, the soul can truly receive and transmit blessing.

A performer since the age of seven, Cantor Barr was active in regional opera and oratorio as well as in liturgical music and performed as soloist both at home and abroad, including concert tours of the Caribbean, Italy and two tours of Greece. Orchestral engagements have included the New York Philharmonic, the American Symphony Orchestra, the Pittsburgh Symphony working with such noted conductors as Zubin Mehta, Lukas Foss, Robert DeCormier, Abraham Kaplan, Matthew Lazar, Robert Shaw, and Gerard Schwarz. She has recorded for Vox Turnabout, Centaur, Sine Qua Non, Not Nice Music, Book of the Month Records, and for the Western Wind, on The Birthday of the World, a 2 CD set of High Holy Day music.

She has served a number of temples, most notably The Village Temple in Manhattan, North Shore Synagogue in Syosset and Temple Shalom in New Jersey. In her capacity as cantor, she has taught well over 1,200 children, to stand tall, proud of their accomplishments, and confident in their abilities.

Cantor Barr is married to Ed Weissman, an attorney (who also sings bass), and is the proud mother of Sara and Nora Fantry. She is a member of the ACC, the GTM, ARC, WCN, URJ, and AGMA.



We soon will be treated to a host of community enrichments listed on the website of the Jewish Federation of the Berkshires:

<https://www.jewishberkshires.org/jewish-federation-of-the-berkshires-calendar>

A number of those events will be of special interest to our membership.

1	1st Night Community Seder	Apr 22	Mon	6.30p	Knesset Israel
2	2nd Night Community Seder	Apr 23	Tue	5.30p	Anshe Amunim
3	Sacred Text Burial	Apr 28	Sun	11.00a	Pittsfield Cemetery
4	Holocaust Remembrance	May 05	Sun	2.00p	Berkshire Museum
5	Jewish Community Day	May 19	Sun	2.00p	High Lawn Farm
6	Spiritual and Physical Fitness (SPF) TAA Summer Hike*	Jun 01	Sat	10.30a	Anshe Amunim
7	Shabbat Across the Berkshires	Jun 07	Fri	5.45p	Knesset Israel
8	Pride Parade	Jun 08	Sat	11.00a	1st Street Common
9	Chant & Chocolate	Jun 12	Wed	7.30p	Anshe Amunim
10	Spiritual and Physical Fitness (SPF) TAA Summer Hike	Jun 15	Sat	10.30a	Anshe Amunim
11	Annual Temple Meeting	Jun 18	Tue	7.00p	Anshe Amunim
12	Medical Aid in Dying with Larry Pellish**	Jun 19	Wed	12.00p	Anshe Amunim
13	Historic Homes of Our Neighbor- hood with Alice Wislocki	Jun 26	Wed	12.00p	Anshe Amunim
14	Spiritual and Physical Fitness (SPF) TAA Summer Hike	Jun 29	Sat	10.30a	Anshe Amunim

*Spiritual and Physical Fitness Hikes will take place every other Saturday from June 1st through August 24th.

**Eat and Engage Talks will take place every Wednesday at noon beginning June 12th through August 14th.

No need for special planning to enjoy each other's company in worship, song, and delightful study every Friday at 5.30p and every Saturday at 9.30a.

Stay tuned for updates.

For Enjoyment and Relaxation - A Book Recommendation

by Jen Streisand



In this entry, I recommend *Moses: A Life* by Jonathan Kirsch, published in 1998. As I write this, we are reading the Exodus story in our Torah Study group, so it seemed like a logical time to learn more about the central character in the story, and perhaps in all the Hebrew Bible: Moses. I became aware of this book after listening to another book by Kirsch, *King David: The Real Life of the Man Who Ruled Israel*, which I recommended in a previous entry.

The story of Exodus is one of the most well-known stories in the Tanakh. In this book about Moses, Kirsch sets out to go beyond the myths and the legends about Moses by closely reading the Biblical text and exploring the question of the historical figure of Moses. In modern times, it gained even more familiarity with the movie, *The Ten Commandments*, released in 1956. Even if one has not read the Exodus story, they know it from the movie, with the dramatic images of Pharaoh's chariots chasing the Hebrews, and the sea parting. But, long before the movie came out, Moses was exalted, and stories about him embellished and enchanted through the centuries, explains Kirsch in his book.

However, unlike other cultures in Biblical times, and even afterward, when exalted figures like Moses were made into gods, Moses was always a man, and a man of contradictions, Kirsch points out. While he brought the law, beginning with the Ten Commandments

to the people, and the allegiance to one God, he used magic in many of his endeavors. The use of magic can be perceived as the opposite view of adhering to the law, and loyalty to one God, especially during ancient times when pagan worship was so prevalent.

The most famous magical exploit of Moses is when he visits Pharaoh to plead with him to free the Hebrews and turns his staff into a snake: "Moses engaged in a contest of dueling magicians in the court of Pharaoh by casting his staff to the ground and turning it into a snake," writes Kirsch.

Jewish scholarship generally views Moses as the commanding figure in the Hebrew Bible, rivaled only by King David. However, Moses' reach, and discussion about him, goes beyond Judaism because Christianity and Islam recognize Moses too, notes Kirsch.

The book goes through the life journey of Moses citing Biblical text, Biblical scholars of different faiths, and historic events through the ages to illustrate the background context of the Biblical narrative. In this way, the non-fiction book can be read like a novel because Kirsch has an entertaining writing style. But it can also be used as an important reference work because Kirsch mentions many other books on the subject during the course of the narrative, and a comprehensive bibliography is included.

At the end of the book, Kirsch asks the question, "Is there any historical proof, other than the Bible and other religious texts, that Moses actually existed, or what he refers to as "the search for the historical Moses." And, he answers his question with a definitive, no. As of the publication of the book in 1998, there was no archaeological evidence of Moses, nor was there any historical testimony.

But for the true believer, or the faithful, he says, an "historical Moses" is almost irrelevant. It is the wondrous story of his life, and the miracle of the Exodus that is more than enough to sustain us in the quest for his existence and for the truth of the tale.

I suppose I can be considered among the faithful because, having read several chapters of Exodus now, the story is too detailed not to have been true in some form. Yes, like any great story, there are embellishments and enchantment, but the basic frame of it was likely to have happened as it is said in the Bible. Any great story always has its central characters, and so, Moses is Moses.

Thank you to the National Library Service for the Blind and Print Disabled, where I found *Moses: A Life* in its audio book collection. The National Library Service is supported in Massachusetts by the Perkins Braille and Talking Book Library.

2023-24 Management Team & Trustees

Barbara Viniar
President

Joan Gluck
Trustee

Larry Pellish
Treasurer

Joel Karlin
Trustee

Jon Lieber
Assistant Treasurer

Michael Margolis
Trustee

Michael Duffy
Recording Secretary

Robyn Rosen
Trustee

Lanny Zuckerman
Immediate Past President

Judy Stolzberg
Trustee

Lesley Beck
Trustee

Charles Wohl
Trustee

Josh Cutler
Trustee

Committees

Budget

Larry Pellish

House

Alba Passerini

Caring

Alba Passerini
Jane Pellish

Membership

Julie Cutler
Lorraine Shaw
Judy Stolzberg

Cemetery

Joel Karlin

Social Action

Janie and Larry Pellish

Finance Committee

Larry Pellish

Worship Committee

Lesley Beck

Hilda Vallin Feigenbaum

Memorial Lecture

Josh Cutler

All board members and committee chairs can be reached through the temple office. Please call the temple office at (413)442-5910 or send an email to: templeoffice@ansheamunim.org

Todah Rabah - Thank you!

Please Contribute to Any Temple Anshe Amunim Fund

All donations are gratefully appreciated.

To donate now, please visit <https://www.ansheamunim.org/donate>

All donations to Mitzvah funds support immediate Temple needs.

Mitzvah Fund: Donations to the Mitzvah fund provide support for:

- Commemoration of happy events both large and small; Onegs and Pre-Negs.
- Expenses related to cantorial, Temple music and the choir.
- Remembrances at services (yahrzeits) and in the Bulletin for loved ones who have passed away.
- Basic religious school expenses.
- Purchasing new books for the library.
- The purchase, repair, and maintenance of Temple art.
- Capital maintenance and repair of the Temple building and memorial boards.
- Daily operations.

Dedicated Prayer book, Tanakh (Bible) minimum donation is \$36, or **Women's Torah Commentary Fund** minimum donation is \$50: Purchases new books with a dedication plate.

Rabbi's Discretionary Fund: to be applied for the benefit of the Temple.

Endowment & Restricted Funds Descriptions:

The Roslyn G. (Roz) Citrin Cantorial Endowment Fund: Donations to this fund will provide annually, for the beauty of Cantorial music

and song to enhance our High Holy Days and special worship.

Rabbi Harold & Audrey Salzmans Religious School Endowment: To support Religious School programming, retreats and trips.

Lynn Denmark/Faith Newmark Endowment: To support the Religious School, as determined by Women of Reform Judaism.

Shaun Beckwith-Chasen Campership Fund: Scholarships for attendance at Eisner/Crane Lake Camp.

Elise & Moe England Religious School Scholarship Fund: Scholarships for religious school attendance.

Jeff Stolzberg Campership Fund: Scholarships for attendance at Eisner/Crane Lake Camp.

Henry & Dorothy Halperin Fund: For children's holiday celebrations.

Dan and Edna Miller Building Fund: For maintenance, renovations and improvements to the Temple.

Individual Endowments: Set up by individuals, these funds are part of the main Temple endowment and support ongoing operations and programs as determined by the Board of Trustees. **Minimum donation is \$10,000.**

Tree-of-Life in honor of, or in memory of: Inscribed leaf to honor the life or memory of a specified person or people on the Temple's Tree of Life. (\$125)

Yahrzeit Plaques: To honor the memory of an ancestor or other family member to be displayed on the memorial board in the lobby. (\$350) *Please complete form from the office for leaf or plaque and submit with your contribution.*

*All donations will be acknowledged in the Bulletin.
Acknowledgements will also be sent to the honoree or family.*

TEMPLE ANSHE AMUNIM CONTRIBUTION FORM

Donor Name (s): _____

Today's Date: _____ Amount: \$ _____ Method of Payment: cash _____ check _____ credit card _____

1. In honor of/ in memory of : _____

(circle one)

Name

Yahrzeit Date/reason for honor (circle one)

Relationship to Donor

To Fund (from above)

2. In honor of/ in memory of :

(circle one)

Name

Yahrzeit Date/reason for honor (circle one)

Relationship to Donor

To Fund (from above)

26 Broad Street, Pittsfield, MA 01201 (413) 442-5910 www.ansheamunim.org

Donations

Mitzvah Fund

Jhayden Faeran

Edwin Helitzer

In loving memory of Jesse Waldinger

Jeffrey Borak

In loving memory of Sharon Feltser

Josh Cutler

In loving memory of Kenneth Mahler

Josh Cutler

*In honor of Miranda Meyers' new position
with Berkshire Health Systems*

Josh Cutler

*In honor of Margeaux Meyers' new
position with Berkshire Sterile
Manufacturing*

Josh Cutler

*In honor of Dave Wallace with wishes for a
r'fuah sh'leimah*

Josh Cutler

In loving memory of Jesse Waldinger

Josh Cutler

In loving memory of Berna Passetto

Josh Cutler

*In honor of Lorraine Shaw with wishes
for a r'fuah sh'leimah*

Josh Cutler

Rabbi's Discretionary Fund

In loving memory of Jesse Waldinger

Marlene Chautin

In loving memory of Eileen Greenhouse-Genet

Neil and Dorothy Koreman

In loving memory of Stanley Koreman

Neil and Dorothy Koreman

In loving memory of Sandi Rubin

Barbara Waldinger

Kiddush Fund

In loving memory of Fannie and Israel Cookis

Joel, Sharon, and Eric Karlin



April Milestones

Birthdays

**Yom Huledet
Same'ach!**

**Happy Birthday to
our members
and friends**

**April 10
Michael Mulligan**

**April 16
Lindsay Crampton-
Greene**

**April 19
Elizabeth Schneider**

**April 22
Jonathan Lieber**

**April 23
Jackie Windisch-
Shayer**

**April 26
Beverly Gilbert**

**April 30
Fred Fagelman**

Anniversaries

**April 24
Tom and Beverly
Gilbert
Mazel Tov on
30 years!**

Yahrzeits: *We hold in loving memory:*

April 1/22 Adar II
Goldie Rae Kurlansky

April 2/23 Adar II
Ruth Pollaine

April 3/24 Adar II
Jessica Cutler
Stanley Koreman

April 5/26 Adar II
Peter Scott Sachsels
I. Charles Schwalb

April 8/29 Adar II
Irving Tanzman

April 10/2 Nisan
Hinda Rod

April 11/3 Nisan
Miriam Hagler
Gertrude Brier
Sidney Feinstein
Anita Wagner Novins

April 14/6 Nisan
Jeffrey Sandow

April 16/8 Nisan
Beverly Shapiro Benderoff
Sadie Drought
William Brier

April 18/10 Nisan
Benzion Jacob Rapoport

April 20/12 Nisan
Evelyn Chattman

April 21/13 Nisan
Sylvia Paley

April 22/14 Nisan
Elba Shaw

April 24/16 Nisan
Phyllis Drayman
Anna Blieberg
Helen Starr
Maxwell Shrager Ross

April 26/2 Nisan 18
Berna Passetto

April 29/2 Nisan 21
Roberta Hubacker

Condolences

The Temple Anshe Amunim community extends condolences to the family and friends of Jesse Waldinger on his recent passing, March 16, 2024.



Yahrzeit Plaques

Yahrzeit Plaques honor the memory of an ancestor or other family member. Each plaque is \$350.

For more information or to request an order form, please call the Temple office at (413) 442-5910.

Yahrzeit Donations - It is customary to make a donation on the occasion of your loved one's Yahrzeit.



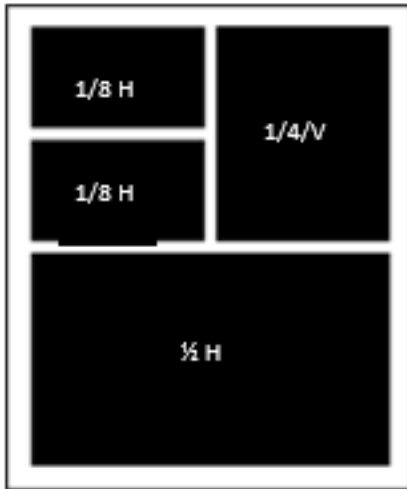
Yahrzeit dates -Yahrzeits are based on the Hebrew or Gregorian (English) date, depending on family preference. If there are any omissions or errors, please call the Temple office at (413) 442-5910.



ADVERTISE WITH TEMPLE ANSHE AMUNIM!

Your ad can go in our monthly bulletin, sent out to our entire congregation.

Full color ads for low prices!



1/8-page H, \$36.00

1/4-page V, \$54.00

1/2-page H, \$126.00

Please reserve your space and have your camera-ready art to us by the 15th of the month you would like your ad to run. templeoffice@ansheamunim.org.

PDF, TIF, or high-resolution JPEG only. NO word documents, please.

Please include this form with your payment to the attention of: Office Manager

Temple Anshe Amunim
26 Broad Street
Pittsfield, MA 01201

Business Name: _____

Contact Person: _____

Phone: _____

E-mail: _____

Month(s)/Year for ad to run: _____

Total Amount Enclosed: _____

For any questions, please contact the Temple Office at (413) 442-5910.

SUN	MON	TUES	WED	THU	FRI	SAT
31 Adar II 21	1 Adar II 22	2 Adar II 23	3 Adar II 24	4 Adar II 25	5 Adar II 26 Soup & Naan Oneg 5:30pm Erev Shabbat Celebration	6 Adar II 27 9:30am Torah Engagement
7 Adar II 28	8 Adar II 29	9 Nisan 1	10 Nisan 2	11 Nisan 3	12 Nisan 4 5:30pm Erev Shabbat Celebration	13 Nisan 5 9:30am Torah Engagement
14 Nisan 6	15 Nisan 7	16 Nisan 8	17 Nisan 9	18 Nisan 10	19 Nisan 11 5:30pm Erev Shabbat Celebration	20 Nisan 12 9:30am Torah Engagement
21 Nisan 13	22 Nisan 14 Taanit Bechorot First home Seder	23 Nisan 15 Pesach TAA Congregational Seder 5:30 pm	24 Nisan 16 Pesach 1st Day Omer	25 Nisan 17 2nd Day Omer	26 Nisan 18 3rd Day Omer 5:30pm Erev Shabbat Celebration	27 Nisan 19 4th Day Omer 9:30am Torah Engagement
28 Nisan 20 5th Day Omer Geniza/Book Burial 11 AM at Pittsfield Cemetery	29 Nisan 21 Pesach 6th Day Omer	30 Nisan 22 Pesach Yizkor 7th Day Omer	1 Nisan 23 8th Day Omer	2 Nisan 24 9th Day Omer	3 Nisan 25 10th Day Omer 5:30pm Erev Shabbat Celebration	4 Nisan 26 11th Day Omer 9:30am Torah Engagement



Caring Committee

The members of Temple Anshe Amunim are a community. Part of the purpose of our Caring Committee is to help members of our community in times of need. To perform that function, we need to know when our members are in need. It has come to our attention that there have been times when a member was in need, would have liked the Caring Committee to reach out and help, even expected the Caring Committee to reach out and help, but we were never aware of the situation. We urge members in need to inform us of your situation. Be assured that we are here for you.

We realize that in the immediacy of the moment, a person in need may be too preoccupied or too reticent to reach out to us. So, we request that if any member becomes aware that another member is in need, please let us and/or the Rabbi know.

We are here for you as you are here for us.

Alba Passerini (alba.passerini@yahoo.com) & Janie Pellish
(randeb66@verizon.net)
Co-Chairs, Caring Committee



Thank You!
FOR YOUR DONATION

BULLETIN NEWS!

THE BULLETIN IS NOW BEING SENT
ELECTRONICALLY

PLEASE EMAIL THE TEMPLE OFFICE AT:
TEMPLEOFFICE@ANSHEAMUNIM.ORG

IF YOU WOULD LIKE TO
RECEIVE A HARD COPY,
WE ARE HAPPY TO PROVIDE ONE!

Help Us Acknowledge Your Support

Donations are the lifeblood of the Temple and are most appreciated! Please help us acknowledge you properly by completing the Donation Form online or provided in the Bulletin. If you choose to send a check, please include a note to specify your elected donations.

Please be aware that bank-generated checks don't specify the purpose of the payment. If you are sending a donation through the bank, please use the "memo" line, if available, or contact the Office to ensure that your payment is recorded and acknowledged as you intended.



All articles must be received by the 15th of the preceding month to be included in the next month's edition.

Please submit photos with captions to:
templeoffice@ansheamunim.org