

## Coming Together

What is it we have missed most this past year? No doubt there is so much - a hug from a friend, the ease of running out to the grocery store, the random opportunity to meet someone new, and yes, the lives we have lost. It may even be the simplest of things that we very well may have taken for granted. This year has taught us much and of course, we're still learning and realizing we have a ways to go.



**Rabbi Michael L. Moskowitz**

For us at Temple, it is the beauty in coming together physically as a community that we miss most – from the moments in hearing our voices join as one in prayer to the calm serenity we might find knowing we are a part of something bigger than ourselves. Unreal in recognizing how long it has been since we have been blessed with this experience.

And with the reality that more and more of us are vaccinated every day combined with increasing sunshine and warmer days (though I write this during an April snowstorm – thanks, Michigan), we believe the opportunity is here now for us to come together in person. Thanks to our high school seniors, we have the perfect Shabbat to give this a try.

It is one of the favorite services of the year for many of us – the night we set aside to honor those children who have given their time and

commitment to our community, joining with us Sunday evenings throughout their high school careers to wrestle with the issues of our times and their lives, as well as explore their Jewish identity. What a year it has been for them all – but their resiliency makes us proud – and hopeful for our future. On May 14, we'll have the privilege of hearing from them and learning from their experiences as they lead us and share with the congregation during Shabbat services. We believe this to be the perfect service to come together, once again, in person.

Of course everything we do will be coordinated in the safest ways we see possible, as instructed by our Covid 19 Task Force. With that in mind, our service will be outside and in order to attend, reservations are a necessity, masks will be worn, and we'll sit physically distanced from one another. As we try this for the first time, we also will limit the number of who can attend to 100.

That said, one thing we have learned this past year is how accessible we can be with our online presence. Therefore, we will continue doing this even when we are in person at Temple – and even when services are outdoors. Our hope is that this is how Shabbat services will continue starting in June (every Friday night at 6:30 starting June 4). How good will it be to be together. How meaningful it will be to connect this way once again on Shabbat. How special it will feel when we sing *Hinei mah tov umanayim shevet achim gam yachad* – How good it is that we can sit together in peace?



## MAY

Friday		Saturday	
		<b>1</b> 9:15am 10:30am	Online Tish via Zoom <b>Bar Mitzvah of Ari Blank</b> Online Shabbat Service via livestream <a href="http://www.youtube.com/templeshirshalom">www.youtube.com/templeshirshalom</a>
<b>7</b> 6:30pm 7:30pm	Online Shabbat Service via livestream <b>Bat Mitzvah of Jillian Mellon</b> Online Shabbat Service via livestream <a href="http://www.youtube.com/templeshirshalom">www.youtube.com/templeshirshalom</a>		
		<b>8</b> 9:15am 10:30am 6:00pm	Online Tish via Zoom Online Shabbat Service via livestream <b>Bar Mitzvah of Noah Gordon</b> Online Havdalah Service via livestream <a href="http://www.youtube.com/templeshirshalom">www.youtube.com/templeshirshalom</a>
<b>14</b> 6:30pm	In-Person Shabbat Service** <b>SHORESH High School Graduation</b> <a href="http://www.youtube.com/templeshirshalom">www.youtube.com/templeshirshalom</a>		
		<b>15</b> 9:15am 10:30am 6:30pm	Online Tish via Zoom Online Shabbat Service via livestream <b>Bar Mitzvah of Samuel Crane</b> Online Havdalah Service via livestream <a href="http://www.youtube.com/templeshirshalom">www.youtube.com/templeshirshalom</a>
<b>16</b> 7:00pm <b>Confirmation Service</b> via livestream <a href="http://www.youtube.com/templeshirshalom">www.youtube.com/templeshirshalom</a>			
<b>17</b> 10:30am <b>Shavuot Yizkor Service</b> via livestream <a href="http://www.youtube.com/templeshirshalom">www.youtube.com/templeshirshalom</a>			
<b>21</b> 6:30pm 7:30pm	Online Shabbat Service via livestream <b>Bat Mitzvah of Madeline Gold</b> Online Shabbat Service via livestream <a href="http://www.youtube.com/templeshirshalom">www.youtube.com/templeshirshalom</a>		
		<b>22</b> 9:15am 10:30am	Online Tish via Zoom Online Shabbat Service via livestream <a href="http://www.youtube.com/templeshirshalom">www.youtube.com/templeshirshalom</a>

**\*\*Register for In-Person Shabbat Service at [www.shirshalom.org/event/graduation-shabbat.html](http://www.shirshalom.org/event/graduation-shabbat.html)**



**28** 6:30pm Online Shabbat Service via livestream  
7:30pm **B'not Mitzvah of Lilly & Molly Resnick**  
Online Shabbat Service via livestream  
[www.youtube.com/templeshirshalom](http://www.youtube.com/templeshirshalom)

**29** 9:15am Online Tish via Zoom  
10:30am **Bat Mitzvah of Maya Fershtman**  
Online Shabbat Service via livestream  
5:00pm **Bar Mitzvah of Ryan Melder**  
Online Havdalah Service via livestream  
[www.youtube.com/templeshirshalom](http://www.youtube.com/templeshirshalom)

## JUNE

### Friday

**4** 6:30pm In-Person Shabbat Service\*\*  
also via livestream  
[www.youtube.com/templeshirshalom](http://www.youtube.com/templeshirshalom)

### Saturday

**5** 9:15am Online Tish via Zoom  
10:30am Online Shabbat Service via livestream  
6:00pm **Bat Mitzvah of Molly Frankel**  
Online Havdalah Service  
via livestream  
[www.youtube.com/templeshirshalom](http://www.youtube.com/templeshirshalom)

**11** 6:30pm In-Person Shabbat Service\*\*  
also via livestream  
[www.youtube.com/templeshirshalom](http://www.youtube.com/templeshirshalom)

**12** 9:00am Online Shabbat Service via livestream  
9:30am [www.youtube.com/templeshirshalom](http://www.youtube.com/templeshirshalom)  
Online Tish via Zoom

**18** 6:30pm In-Person Shabbat Service\*\*  
also via livestream  
[www.youtube.com/templeshirshalom](http://www.youtube.com/templeshirshalom)

**19** 9:00am Online Shabbat Service via livestream  
9:30am [www.youtube.com/templeshirshalom](http://www.youtube.com/templeshirshalom)  
Online Tish via Zoom

**\*\*Register for In-Person Shabbat Services: [www.shirshalom.org/event/summer-2021-shabbat.html](http://www.shirshalom.org/event/summer-2021-shabbat.html)**

**Sunday morning Minyan meets at 10:00am on Zoom To join the meeting go to <https://zoom.us/join/zoom/register/upckdOigqj4r41f4VNyKZNgKshMhTm7jkw>**



## JUNE

Friday	Saturday
<b>25</b> 6:30pm In-Person Shabbat Service** also via livestream <a href="http://www.youtube.com/templeshirshalom">www.youtube.com/templeshirshalom</a>	
	<b>26</b> 9:00am Online Shabbat Service via livestream <a href="http://www.youtube.com/templeshirshalom">www.youtube.com/templeshirshalom</a> 9:30am Online Tish via Zoom

## JULY

<b>2</b> 6:30pm In-Person Shabbat Service** also via livestream <a href="http://www.youtube.com/templeshirshalom">www.youtube.com/templeshirshalom</a>	
	<b>3</b> 9:00am Online Shabbat Service via livestream <a href="http://www.youtube.com/templeshirshalom">www.youtube.com/templeshirshalom</a> 9:30am Online Tish via Zoom

**\*\*Register for In-Person Shabbat Services:** [www.shirshalom.org/event/summer-2021-shabbat.html](http://www.shirshalom.org/event/summer-2021-shabbat.html)

Sunday morning Minyan meets at 10:00am on Zoom To join the meeting go to  
<https://zoom.us/join/zoom/register/upckdOigqj4r41f4VNYKZNgKshMhTm7jkw>

## Shabbat Morning Tish

Saturdays @ 9:15am  
on Zoom

**Build community  
through study.**

**Join with your  
Rabbis and fellow  
Temple members  
as we study  
Torah one verse  
at a time.**

Register here: [www.shirshalom.org/event/tish.html](http://www.shirshalom.org/event/tish.html)

Kabbalat Shabbat  
Service

Temple Shir Shalom

**6:30pm Friday's**

June 4-Aug 20

*weather permitting*

RSVP is REQUIRED by 5pm the Weds before.  
*Space is limited!*

Details/RSVP:

[www.shirshalom.org/event/summer-2021-shabbat.html](http://www.shirshalom.org/event/summer-2021-shabbat.html)







# Enhancing Our Community



**Brian D. Fishman**  
Executive Director

As I continue my role as Executive Director, my love for Temple grows. One of my favorite responsibilities is talking to members. While there can be a variety of reasons that initiate the conversation, I truly enjoy getting to know our congregation better and learning things about you like why they joined Shir Shalom, different stories about backgrounds and things that are important to them. So often, these conversations involve a discussion of money – either because of a desire to donate or to request assistance – and we are so fortunate to have a system set up for both.

If you have ever made a contribution to Temple and filled out the online or paper form, you undoubtedly noticed our long list of funds. These funds have been set up over the years as a way for some members to get behind a cause that they believed in and wanted to support financially. Some of these funds have been around for decades and others were established much more recently. Some require very specific situations for use while others are more broad. The requirements to establish a new fund include certain commitments to continue to contribute but anyone can donate to any of them. It gives a donor the freedom to support a cause that is important to them while still donating to Temple. It is also the first place we look to when trying to assess a specific need. The generosity of our community continues to amaze me and is so important. I use the word “community” rather than members as we connect with people who are not members but are charitable toward Shir Shalom.

This issue of *The Scribe* contains a listing of the funds as well as a description of what they support. I encourage you to review it and learn something about Temple. Some of the descriptions are straightforward and others have stories behind their creation. Here is the story I learned about the Jami Ann Sanders Youth Fund from her father, Gary Sanders. Gary is a fascinating guy who lives in Las Vegas and is one of our founding members. I have had the pleasure of speaking to Gary several times about various things including the fund that he set up. He said that he recalls when his daughter Jami, now in her forties, was involved in the high school program, she constantly needed \$25 for this or \$50 for that and he decided that he wanted to establish a fund to assist those families that need help with those types of expenses. So many families struggle to cover their necessary expenses and simply don't have funds left for the extras. He just wanted to help. It was as simple and beautiful as that.

This is just one of the stories behind the creation of a fund and I look forward to learning more of them. If you want to find out the backstory on any fund, want to contribute to any of them or are having financial issues that I might be able to help with, please do not hesitate to contact me.

Stay well and enjoy the weather! •  
[brian@shirshalom.org](mailto:brian@shirshalom.org)



## Temple's Spring Golf Outing





# We Can All Be Resilient

## TEMPLE SHIR SHALOM'S the learning center preschool



**Marsha Mitnick**  
Early Childhood  
Learning Director

"The most common way people give up their power is by thinking they don't have any." -Alice Walker

I am fully vaccinated. I am able to spend lots of quality time with my grandchildren. Every adult in my personal bubble is vaccinated. The kids and the staff at Temple continue to be in good health. The temperatures are warming, the grass is getting greener every day and the trees are filling out with new leaves. Yet, I feel the need to be cautious, wear a mask everywhere and am constantly refilling my liquid soap bottle. Being resilient doesn't mean going back to the way things were. To me it means finding a healthy way to cope and discover the joy of what is out there when we look and see what is there.

According to research done at The Center on the Developing Child at Harvard University, there are positive factors that can tip the scale toward positive outcomes when there are difficult times or hardships on a regular basis for children. To be clear, this research is focused on children who experience toxic stress, the prolonged exposure to constant stress. When talking about early childhood it is worth noting that all children flourish when their stress levels are developmentally appropriate. The following are some factors that predispose and optimize resilience in young children:

1. The most important factor is at least one stable committed relationship with a supportive parent, caregiver, or other adult.
2. Learning to cope with manageable threats is critical for the development of resilience. With the help of a supportive adult, managing

developmentally appropriate stress can strengthen the ability for the young child to learn coping skills.

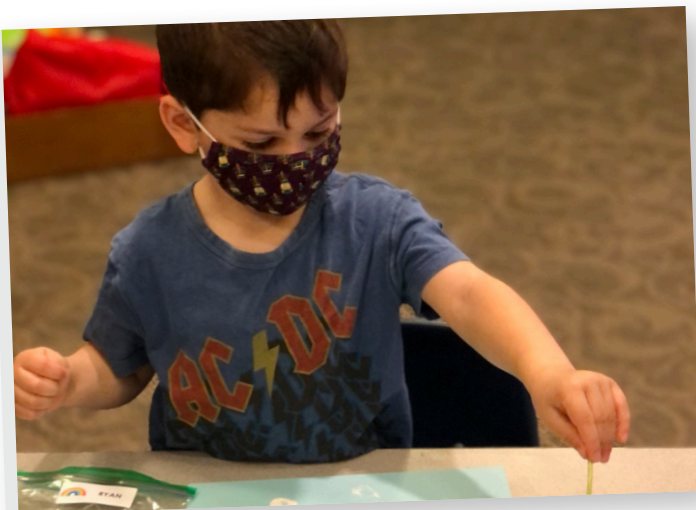
3. Children learn to self-regulate by the adults they are modeling in their life. Helping the young child become confident in their ability to be self-regulated and to feel that they have a sense of control of what is going on around them is crucial for a child to develop resilience.

4. Facilitating opportunities for a child to participate in sources of faith, hope and cultural traditions provides a stronger sense of self.

It is interesting to note what we have seen this year with our preschoolers as they participated in the classroom experience during the pandemic. Parents were to drop children off and not come in the building. For many that have been with us in the past, this was a huge change. Staff and children were wearing masks all the time and continue to do so. Careful attention to interactions, proximity to others, sharing toys and constant washing of hands has become integrated and a matter of fact in our daily gatherings. With watchful eyes and some scaffolding every single child has transitioned to these new routines and changes.

The pandemic has brought new opportunities for change and understanding the world around us. Young children require the skills needed to cope and develop resiliency. Part of the benefits and blessings of working with our preschoolers has taught me that they bring plenty of strength to the formula of resilience. It has been my experience that we as adults can take a lesson from them! •

[marsha@shirshalom.org](mailto:marsha@shirshalom.org)







## It Can Be Fun & Games



**Andee Liberman**  
Associate Director

As the weather warms up, the opportunity to be outside is increasing. And even as the pandemic continues, our families are reuniting, grandparents and aunts and uncles are seeing their families in person and sharing hugs and it is a beautiful thing to be part of!

Over Passover I had the opportunity see my children and grandchildren and it was a beautiful thing! We hugged, we laughed, we went on walks together and cooked together. (I forgot how messy that can be!) With the weather being nicer, we were outside drawing with chalk and playing games. One game they played was “Tag You’re It.” It was traditionally the same tag game, but if you were tagged it was “tag you have covid”. That was certainly a surprise to me! But it provoked thoughts of how else our children are processing all that has happened and continues to happen during the pandemic. The ability to process change and apply it to be relevant is different for children and adults.

As we get together and have fun and games, remember to confirm the way our children are processing their own pandemic and having fun with it is a great way to express feelings. Later at the seder table we all had the opportunity to share our feelings about the pandemic in a few words. The kids shared, “We are having fun. We do school, lots of arts and crafts and play games.” How great it is to see the world through children’s eyes.

With SHORESH being outside and online this year, our staff has had the opportunity to create new activities and projects with fun and games. We are creating memories and continuing to instill the love of Judaism within. Whether our students realize it or not, that is the outcome of our camp curriculum. What better way than to be able to do it outside!

Enjoy the warmer weather, play games, do arts and crafts, and have fun! • [andee@shirshalom.org](mailto:andee@shirshalom.org)



## It's that time of year...

**Register for SHORESH 2021-2022 is online this year!**  
**Log into your ShulCloud account and start**  
**“School Enrollment” today!**

*(Step by step instructions are on page 15 of this Scribe)*

**Questions? Contact [julie@shirshalom.org](mailto:julie@shirshalom.org).**

# From Israel's Independence to the Abraham Accords

**Sunday, May 2 @ 11:00am  
On Zoom!**

We are excited to welcome Rabbi Dr. Elie Abadie, Senior Rabbi, United Arab Emirates joining us from Dubai!



Beirut-born Rabbi Dr. Elie Abadie, a prominent rabbi and scholar of Sephardic Judaism, recently relocated from New York City to the Gulf metropolis of Dubai to serve as the community's senior rabbi. The Jewish Council of the Emirates is the country's oldest congregation and the only one recognized by local authorities. Rabbi Abadie also heads the Association of Gulf Jewish Communities created by the UAE, Bharian, Kuwait, Oman, Qatar and Saudi Arabia which oversees Jewish life and the Beth Din of Arabia. He is an officer of the Rabbinical Council of America and co-president of Justice for Jews from Arab Countries, a group advocating for Jewish refugees from the Middle East.

This event is co-sponsored by Temple Shir Shalom, Temple Shir Shalom Brotherhood, Congregation L'Dor V'Dor, Temple Beth Torah of Melville, UNRWA: Stop Teaching Hate and the American Jewish International Relations Institute

**RSVP: [www.shirshalom.org/event/abraham-accords.html](http://www.shirshalom.org/event/abraham-accords.html)**

## New Realities, Ancient Wisdom: Monday Morning Musings with Rabbi Moskowitz

Start your week off with a fast 15 minutes of learning with Rabbi Moskowitz and special guests.

Monday, at 9:00am,  
via Rabbi Michael Moskowitz's Facebook page, Temple's Facebook page and at [www.youtube.com/templeshirshalom](http://www.youtube.com/templeshirshalom).  
Live!

### Temple Shir Shalom's Master Speaker Series presents:

**Dr. Michael Shapiro  
& Rabbi Michael Moskowitz**  
*A Tour of the Heavens*  
-Looking at What Abraham Saw:  
The Astronomy of Ancient Judaism to Modern Times

**Tues. 5/18  
@ 7:30pm**

RSVP: [www.shirshalom.org/event/master-speaker-series.html](http://www.shirshalom.org/event/master-speaker-series.html)



TEMPLE SHIR SHALOM'S  
the learning center preschool

INVITES YOU TO A SPECIAL

## TLC Garden Party

AT ADAT SHALOM

**Saturday, May 22nd  
@ 12:30pm**

Help us plant our garden!

Your admission to the event is an organic vegetable plant or flower. Snacks will be provided.

RSVP BY FRI. MAY 21:

[WWW.SHIRSHALOM.ORG/EVENT/GARDEN-PARTY.HTML](http://WWW.SHIRSHALOM.ORG/EVENT/GARDEN-PARTY.HTML)







## Ari Nathan Blank

May 1, 2021



Ari is the son of Jamie and Howard Blank and the grandson of Ilene Blank, Marilyn and William Kohen, and the late David Blank and great-grandson of Ethel Shapiro. Ari is a student at Berkshire Middle School. He says his most memorable experience at Temple was the Late Night program at Temple where he got to play games and spend time with his SHORESH friends. Ari is grateful for his family because they teach

him how to be a good person and support him in all of his sports and activities. He is looking forward to staying involved with Temple in the future.

## Jillian Tate Mellon

May 7, 2021



Jillian is the daughter of Marla and David Mellon. She is the granddaughter of Rochelle and Arthur Lieberman, Kim Mellon and the late Joseph Mellon, Jr. Jillian is a student at Berkshire Middle School. Her most memorable experience at Temple was participating in the overnight retreats with her SHORESH friends. In her spare time, Jillian enjoys performing in musicals, dancing, and creating through photography

and arts and crafts. She is grateful to her parents for supporting her and all of her interests, and she is also grateful for her teachers and friends that she can count on. Jillian is thankful for her Temple community for helping her to prepare for her bat mitzvah.

## Noah Seth Gordon

May 8, 2021



Noah is the son of Jennifer Rosen and Russ Gordon and the grandson of Judy Kile, Sue Rosen, Barbara and Marty Scharf, the late Michael Gordon and the late Kenneth Rosen. Noah is a student at Warner Middle School. His most memorable experiences at Temple are participating on the retreats with his SHORESH friends. In his spare time, Noah enjoys playing the piano and videogames. He is grateful to his parents for

supporting him and always being there for him. Noah is proud to be part of the Temple Shir Shalom family and looks forward to staying involved at Temple in the future.

## Samuel Raymond Crane

May 15, 2021



Sam is the son of Tracy and Brian Crane and the grandson of Harriet and Daniel Crane and Ginny and Scott Hogan. He is a student at Lakers Online School. Sam's most memorable experience at Temple was participating in the retreat with his SHORESH friends. Sam is grateful to his parents for providing for him. Sam appreciates all of the support that his tutor, Riki and the rest of his Temple community has given him

through this extended process of preparing for his bar mitzvah.

## Madeline Belle Gold

May 21, 2021



Maddie is the daughter of Gayle and Lorne Gold and the granddaughter of Francine and Edward Gold, Fred Apel and the late Beverly Apel and the late Harry Friedman. She is a student at Norup International School. Maddie's most memorable experience at Temple was writing a letter with her family in Temple's Project 613 Torah. In her spare time, Maddie enjoys figure skating, drawing and spending time with

her friends. She is grateful for her parents, brother, extended family, skating coach and all those who have helped her on her journey to becoming a bat mitzvah. Maddie looks forward to staying involved with Temple in the future.

## Lilly Emma Resnick

May 28, 2021



Lilly is the daughter of Randi and Kevin Resnick and the granddaughter of Janet Belenson, Leslie and Sheldon Belenson, and Sandie and Seymore Resnick. Lilly is a student at Farmington STEAM Academy. Her most memorable experience at Temple was attending services with her family. Lilly loves to spend her free time creating art and hanging out with her friends. She is grateful to her parents for all the support and love

they give her. Lilly looks forward to continuing to be active in her Jewish community in the future.



## Molly Rose Resnick

May 28, 2021



Molly is the daughter of Randi and Kevin Resnick and the granddaughter of Janet Belenson, Leslie and Sheldon Belenson, and Sandie and Seymore Resnick. Molly is a student at Farmington STEAM Academy. Her most memorable experience at Temple was celebrating Purim with her Temple friends. In her free time, Molly enjoys playing volleyball and spending time with friends. She is grateful to her sisters for

being supportive of her. Molly looks forward to continuing to staying involved in the Jewish community.

## Maya Dawn Fershtman

May 29, 2021

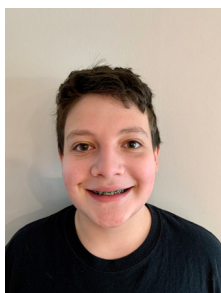


Maya is the daughter of Linda and Robert Fershtman and the granddaughter of Eileen Millstone, the late Edith and the late Herman Fershtman and the late Donald Stern. Maya is a student at Clifford Smart Middle School. Her most memorable experience at Temple was performing in the Purim Shpiel and getting to know the rest of the cast. Maya is grateful for her best friend because she is always there for her. Maya

looks forward to staying involved in the Jewish community in the future.

## Ryan Chase Melder

May 29, 2021

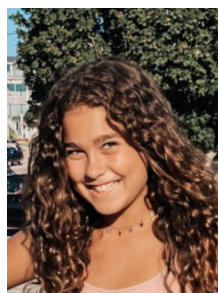


Ryan is the son of Bari and Aric Melder and the grandson of Elaine and Sanford Melder, Barbara Zipkin and the late Harvey Zipkin. He is a student at Warner Middle School. Ryan's most memorable experience at Temple was participating in the retreats with his friends from SHORESH and become closer to his Jewish community. He is grateful to his family and friends because they support him through the good and

bad times. Ryan says that preparing for his bar mitzvah, although an extended process, has made him feel more connected to his Jewish heritage and family.

## Molly Madeline Frankel

June 5, 2021



Molly is the daughter of Barrie and Kevin Frankel and the granddaughter of Annette Berson, Carol and Jerome Frankel, the late Mark L. Berson, the late Susan and the late David Burke. Molly is a student at Norup International Middle School. Her most memorable experiences at Temple were her brother's and sister's bar and bat mitzvahs, where she got to participate in the service.

In her free time, Molly enjoys playing volleyball, soccer, basketball and swimming. She is grateful to her family for always being there for her and supporting her. Molly appreciated the community service experiences she has participated in and looks forward to staying involved in the community in the future.



# Graduation & Confirmation 5781



Join us as we honor the Graduating Class of 5781  
on Friday, May 14, 2021 at 6:30PM.

You can view this service at [www.youtube.com/templeshirshalom](http://www.youtube.com/templeshirshalom)

**GRAYSON BLASKE**

*child of Fiona & Steven Blaske*

**JAMIE MARX**

*daughter of Elizabeth & Scott Marx*

**OLIVIA SAMSON**

*daughter of Tami & Danny Samson*

**MAYA CONTORER**

*daughter of Beth & David Contorer*

**JOSHUA MOSTYN**

*son of Marla Mostyn*

**SARAH SCHECK**

*daughter of Melissa & Richard Scheck*

**EMILY GOLDSTEIN**

*daughter of Nancy & Avery Goldstein*

**RACHEL NAKISHER**

*daughter of Allison & Marc Nakisher*

**HANNAH TILDS**

*daughter of Cary & Eric Tilds*

**HANNAH GORDON**

*daughter of Jennifer Rosen  
and Russ Gordon*

**ALEXANDRA PEARLMAN**

*daughter of Debbie & Joel Pearlman*

**JAKE WITUS**

*son of Susan & Brian Witus*

**EMMA KATKOWSKY**

*daughter of Lauren & Jeff Katkowsky*

**JONAH RIFKIN**

*son of Gillian & B. Andrew Rifkin*

**MAYA WOLBERG**

*daughter of Sheryl Wolberg,  
Shira & Lyle Wolberg*

**IAN ROSENBERG**

*son of Beth & Brad Rosenberg*

---

Join us as we honor the Confirmation Class of 5781  
on Sunday, May 16, 2021 at 7:00PM.

You can view the service at [www.youtube.com/templeshirshalom](http://www.youtube.com/templeshirshalom)

**AMANDA ACEY**

*daughter of Alicia & Adam Acey*

**RUBY KATKOWSKY**

*daughter of Lauren & Jeff Katkowsky*

**MADELINE PITLER**

*daughter of Lori Pitler and Randall Pitler*

**ELLA BLANK**

*daughter of Jamie & Howard Blank*

**ABIGAIL SAMSON**

*daughter of Tami & Danny Samson*

**REBEKAH SELIGMAN**

*daughter of Angie & Ron Seligman*

**ISABELLA CIMMINO**

*daughter of Ilyssa & Noel Cimmino*

**SAM MELDER**

*son of Bari & Aric Melder*

**JACOB SHAPIRO**

*son of Lainie & Michael Shapiro*

**SOPHIA GURALNICK**

*daughter of Susan & David Guralnick*

**EDEN MINTZ**

*daughter of Michelle & Eric Mintz*

**AIDAN SHORESH**

*son of Betty Chu & Navot Shoresch*

**ETHAN HORN**

*son of Ann & Samuel Horn*

**JULIA PEDERSEN**

*daughter of Jan & Mark Pedersen*

**AARON WEISKOPF**

*son of Lisa & Michael Weiskopf*



## Maya Contorer



Maya, daughter of Beth and David Contorer, reflects that during her time at Temple she has loved getting to know other kids older and younger from different schools. Her favorite part of Temple is the staff that she's met and connected with; they've played a unique role in her life that she wouldn't have been able to experience anywhere else. She is forever grateful for Temple and the community she's built.

Maya's most significant Jewish experience was preparing for her bat mitzvah. The hours spent learning her Torah portion and chanting with Cantor Penny, to learning the prayers with Yali and getting to celebrate her dedication and work with her friends and family was a special experience for Maya. Maya plans to attend The University of Michigan, College of LSA in the fall. She is currently undecided on her major but is interested in neurology.

## Emily Goldstein



Emily, daughter of Nancy and Avery Goldstein, says that her time at Temple has meant making Judaism relatable and relevant to her life. Emily's most significant Jewish experience was attending camp at Tamarack Camps. It was the first time she felt pride in being Jewish and enjoyed participating in activities that revolved around Judaism and Jewish values. Emily plans on studying a pre-med track and will

attend Tulane University in the fall.

## Hannah Gordon



Hannah, daughter of Jennifer Rosen and Russ Gordon, states that Temple Shir Shalom has given her a community where she always feels welcome. Being a part of SSTY has given Hannah friends that she hopes to have for the rest of her life. Hannah's most significant Jewish experience was her bat mitzvah and becoming part of a new community.

Hannah plans to attend the Lyman Briggs

College at Michigan State University this fall, pursuing a career in the medical field.

## Emma Katkowsky



Emma, daughter of Lauren and Jeff Katkowsky, reflects that her time at Temple Shir Shalom has allowed her to stay connected to her Jewish community while making new friendships and connections. Temple has given her a space to grow as a Jew and as a person. Emma's most significant Jewish experience was her bat mitzvah. Emma plans to attend Michigan State University this fall, pursuing a major

in psychology.

## Jamie Marx



Jamie, daughter of Elizabeth and Scott Marx, says that her time at Temple Shir Shalom has made her feel more connected to Judaism and the community. Temple has truly felt like a family and Jamie is so thankful for that. Jamie says her most significant Jewish experience is actually a combination of experiences from the SSTY trips. Whether it was a Shabbat experience, a museum trip or a visit to a synagogue,

each time the trip left her feeling more connected to her Judaism. Jamie plans to study biology on the pre-med track through the Lyman Briggs College at Michigan State University in the fall.

## Joshua Mostyn



Josh, son of Marla Mostyn, states that his time at Temple has created a warm and welcoming community for him. He is proud that he's attended SHORESH since first grade and has too many memories to list. Josh says his most significant Jewish experience was during his preparations for his bar mitzvah. He says that learning and understanding his Torah portion and spending time with Rabbi Daniel, Rabbi

Mike and Cantor Penny helped him develop a new connection to his community. Josh is planning to study Vocal Performance at Michigan State University in the fall.



## Rachel Nakisher



Rachel, daughter of Allison and Marc Nakisher, reflects on her time at Temple as one of the most enriching and meaningful experiences she's ever had. From volunteering at Coleman A. Young Elementary School to planning the Purim Carnival, SSTY has made Rachel excited about being an active member in the Jewish community. Her involvement with SSTY has created a space for Rachel to openly discuss what it means for her to be Jewish and dig deeper beyond her bat mitzvah years. Without her time at Shir Shalom, Rachel says she never would have been able to see how her heritage and religion influence her everyday life. Rachel's most significant Jewish experience was serving as the President of the Shir Shalom Temple Youth (SSTY). This gave Rachel the opportunity to work with many Jewish teens and lead the youth group board with events and activities. Specifically, when she spoke at High Holiday services, she was able to share her Jewish connection and story with the congregation. Rachel plans to major in sociology with a sub-major in Law, Justice and Social Change at the University of Michigan in the fall.

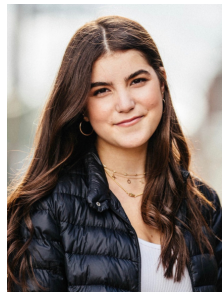
## Jonah Rifkin



Jonah, son of Gillian and B. Andrew Rifkin, says that he remembers his first-grade class at SHORESH and instantly finding a home at Temple. He has so many memorable experiences while involved at Temple that include the Purim Carnival, a trip to Detroit to learn about the city's Jewish history, becoming a Machonik, the many retreats at the Walled Lake Outdoor Education Center and SSTY trips to Cincinnati and New York.

Jonah states that SSTY was always something he looked forward to at the end of the weekend and it was a great transition into the next school week. He says, above all else, he will remember the people at Temple the most. To his many SHORESH teachers, Andee, Alyah, Jeremy, Allie, Rabbi Daniel and Rabbi Mike, he is thankful for everything they have done for him throughout his years at Temple. Jonah reflects that his most significant Jewish experience at Temple was his bar mitzvah and he remembers fondly the many days studying with Yali and how it was a compilation of everything he had learned at SHORESH. Jonah plans to attend Purdue University's Polytechnic Institute to study Aviation Management in the fall.

## Alexandra Pearlman



Alex, daughter of Debbie and Joel Pearlman, states that her time at Temple has allowed her to build a community that supports her, loves her and cherishes her. Alex says her most significant Jewish experience was going to Israel with her family. She learned about her Jewish heritage as well as the importance of keeping Judaism in her life to come. Alex is deciding between the University of

Wisconsin and Ohio State University to attend in the fall. She does know that she will be trying to help people in the future.

## Ian Rosenberg



Ian, son of Beth and Brad Rosenberg, states that Temple has given him a place to find out what it means to be a Jew in the world. Participating in Sunday Night School each week, even through the pandemic, to learn together has given Ian a unique experience to reflect upon. Ian says his most significant Jewish experience came during the Summer of 2019 when he spent six-weeks in Spain. He lived at a camp for three weeks with

thirty-six other kids from nine countries and that three of the four of the US delegates happened to be Jewish. They were proud to educate their fellow campers about their Jewish values, traditions and customs. Ian plans to study engineering, likely chemical or material science, and continue to play viola in the orchestra and string quartets of his chosen school. Ian is deciding where he will attend school in the fall, between the University of Michigan, Tufts University and Colgate University.





## Olivia Samson



Olivia, daughter of Tami and Danny Samson, says that because of her experiences in Madrichim and SSTY, Temple means so much to her. Olivia's most memorable Jewish experience was her bat mitzvah and spending the time with her family, friends and her Temple community. Olivia also states that her family's trip to Israel comes in as a close second on her most memorable Jewish experience list.

Olivia plans to attend Western Michigan University and major in Psychology.

## Sarah Scheck



Sarah, daughter of Melissa and Richard Scheck, says her time at Temple has meant a lot to her. She has made countless memories, new friends and helped out more in the community than she ever thought she could. Going to Sunday Night School has given her experiences that she values greatly. Sarah says her most significant Jewish experience was pre-COVID-19 when at Sunday Night School,

everyone would gather in the sanctuary and do Havdalah. She says whenever the group gathered together, it felt like she was home. She says that Havdalah will always hold a special place in her heart. Sarah plans to attend Kent State University in the fall, studying Criminal Justice. She plans to join the Air Force ROTC and the Kent State Color Guard.

## Hannah Tilds



Hannah, daughter of Cary Tilds and Eric Tilds, says during her time at Temple she has made some of the best friends and so many memories. She has been able to lean on her Jewish community in times of joy, sadness and even uncertainty. Being Jewish has become an important part of Hannah's life because of her involvement with Temple. Hannah states that her most significant Jewish experience was her

junior year trip to New York, where the group went to a local temple for Shabbat services. During the service, Hannah describes, the congregants invited the SSTY group to hold hands and dance around the room while singing a Hebrew song. More than just the physical experience, Hannah was able to witness how complete strangers could be brought together by Judaism. Hannah plans to attend the University of Michigan following a pre-med curriculum this fall.

## Jake Witus



Jake, son of Susan and Brian Witus, reflects that his time at Temple has meant a lot to him. The relationships he's developed with Rabbi Mike, Rabbi Daniel, Alyah, Jeremy and Allie are supportive and special to him. He is grateful for the friendships he's made through being a student at SHORESH and a member of SSTY. The activities and conversations throughout his four years in SSTY were deeply impactful and will

stick with him. Jake says his most significant Jewish experience is doing Havdalah services at camp or at Temple. The lighting of the Havdalah candle and singing the prayers are the rituals which have been most meaningful for Jake. Jake plans to attend the University of Vermont in the fall, with a major in neuroscience. He also plans to make his future full of exploring nature, learning about the world around him and practicing social activism wherever he goes.

## Maya Wolberg



Maya, daughter of Sheryl Wolberg, Shira and Lyle Wolberg says that her time at SHORESH has allowed her to create a community with her peers and those older and younger than her. She feels very lucky to have grown up in such a welcoming environment and is excited to take the life lessons she's learned with her in the future. Maya's most significant Jewish experience was when her family took a trip to Israel

when she was in fifth grade. The trip was with other families and Maya reflects on that experience as significant to her spending time with her siblings and her Jewish community. Maya plans to attend the University of Colorado at Boulder majoring in Business in the fall.



Mazel Tov to **Joanie & Richard Goodman** on the birth of their granddaughter on March 20, 2021, Serena Ellie, daughter of Jodi Goodman.

Mazel Tov to **Sue & Dicron Mahakian** on the birth of their granddaughter on March 26, 2021, Lily Jane Mahakian, daughter of Lindsay & Jason Mahakian

## Social Action

**Sallyjo Levine**  
Committee Chair

We have a new project that we are sharing with members of the Pine Hill Church on Middlebelt. We make lunches for the NOAH project which stands for Networking, Organizing and Advocating for the Homeless. Diane Jacobs, Mary Sue Munter, Arlene and Larry Weingarten, Jan Pederson, Allison Parr, Bev Ehrlich, and Elaine Melder all worked with ladies from the church. Ainsley Liefer, my granddaughter, and Amy Liefer, my daughter, also made sandwiches and Ainsley went down to the NOAH project site to help deliver. Linda Ketterer, from Pine Hill, is thrilled to be doing some projects with us. She worked tirelessly with Charlotte Milgrim z"l when we were involved with I Am My Brother's Keeper.

We are going to be continuing with this and we invite new people to join us. This time everyone made the sandwiches in their own homes. Hopefully we will be able to gather in May and make it a true community project.

Two other agencies have reached out to us and we hope to be doing more community service. Stay tuned to the Temple website and email communications for more information!

## Volunteers

**Sunday Minyan Leaders:** Ilysa Koltonow, **Music by** David Hearshen

**SHORESH Volunteers:** Marla Mellon

**Shiva Corps:** David Hearshen & Flo Paterni

Sara Kalish and Tiffany Fleischer for co-chairing the Beyond the Basics Passover Cooking Demo

Lainie & Michael Shapiro for co-chairing the Cooking and Inspiring: Memorable Passover Dishes & New Ideas For The Holiday

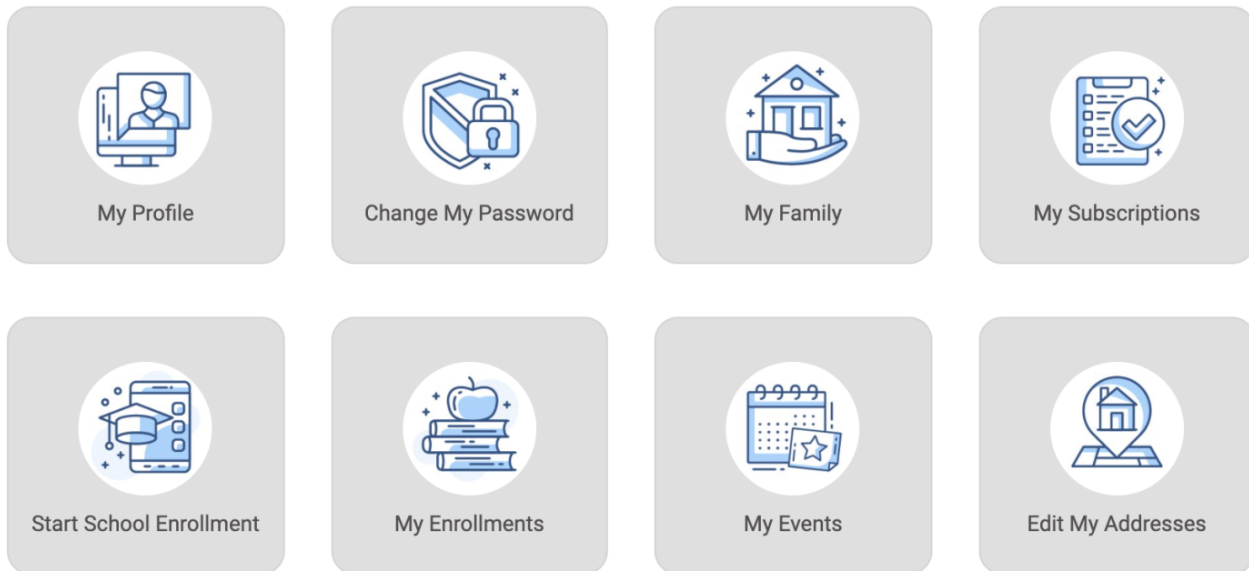


# Your Guide to Registering for SHORESH on ShulCloud

As you may have seen, Temple Shir Shalom launched a new website last summer. We sent out login links to all adult members in December and we wanted to give you a tour of your account and what you can do through ShulCloud. If you have not set-up your account yet, please email [audrey@shirshalom.org](mailto:audrey@shirshalom.org) for a new login link.

1. Log into the ShulCloud Member Portal on the Temple website ([www.shirshalom.org](http://www.shirshalom.org))
2. Next, click on “My Account”-Right hand side of the navigation bar on the homepage
3. Click on “Start School Enrollment”

Welcome to the member account area. Here is where you can control everything related to your account. Hover over the tiles below to see what each of them do.



4. On the next screen you see the following. Select “5782 2021-2022 SHORESH as the term”
5. The next screen should be a list of all your children. Next to each child you are enrolling, select the correct grade (course) from the drop-down menu and click on the blue CONTINUE button.
6. Double check the information that auto-fills on the form and make sure it is correct. Complete any other required questions, including an Emergency Contact for your child(ren).
7. Once you have submitted the information, you will be able to see a summary under the “My Enrollments” area.



## Hot Topics: Contemporary Issues Through a Jewish Lens



This class meets via Zoom on the second Tuesday of the month at 8:00pm. Register for one or the whole series!

**May 11 Topic:**  
A Conversation about Black Lives Matter and  
Racial Justice and Why They Should Matter to Us  
Taught by Rabbi Daniel Schwartz

Register here: [www.shirshalom.org/event/hot-topics.html](http://www.shirshalom.org/event/hot-topics.html)

Temple Shir Shalom & The Learning Center Preschool  
present:

## Pop-Ups In The Park

Connect with old friends and make new ones  
while enjoying great Metro Detroit Parks

For 0-7 year olds, their families & friends.

**Sat, May 15**  
**12:30pm**  
**@ Hess Hathaway Park**  
**in Waterford**

Look for the Shir Shalom sign at  
the super-sized Adirondack chair.  
Come pet the animals and  
enjoy the playground.  
We will be providing a snack!



Please RSVP by Fri. May 14 at:  
[www.shirshalom.org/event/pop-up.html](http://www.shirshalom.org/event/pop-up.html)  
or call **248-406-4255**

## BIM BOM BABY

BABIES-6 YRS. W/ SPECIAL ADULT

**10:00 AM**

**ONLINE VIA ZOOM!**

JOIN US FOR AN INTERACTIVE SHABBAT EXPERIENCE  
WITH TEMPLE SHIR SHALOM'S CANTOR & RABBIS FROM  
THE COMFORT OF YOUR OWN HOME!

FRIDAY  
MAY

**28**

2021

17 SIVAN 5781



Please RSVP at:  
[www.shirshalom.org/event/bimbom-online.html](http://www.shirshalom.org/event/bimbom-online.html)  
or call **248-406-4255**  
to receive the Zoom link

## CAMP TEVA

**SUMMER 2021: Come Play With Us!**

Join us this summer at TLC's Camp Teva for sun-filled, friendship-building days as our Green Generation children learn about nature and Judaism while experiencing all the fun the outdoors can offer — this year, camp will take place exclusively outside (except for bathroom breaks).

**CAMP DAYS: Mondays, Wednesdays & Fridays**

HALF DAY: 9am-12:00pm \*\*can add lunch 12:00-1:00pm  
FULL DAY: 9am-3pm

**SESSION DATES: Five 2-Week Sessions**

Session #	Week 1 Begins:	Week 2 Begins:
1	June 21	June 28
2	July 5	July 12
3	July 19	July 26
4	August 2	August 9
5	August 16	August 23

**CONTACT US: Questions / Enrollment:**

EMAIL: [julie@shirshalom.org](mailto:julie@shirshalom.org)  
CALL: (248)737-8700  
WEBSITE: [www.shirshalom.org/campteva](http://www.shirshalom.org/campteva)

**Play**

Children are playful by nature. They create make-believe, get messy, laugh and make friends. It's all about play and fun throughout our campers' day.

**Learn**

At Camp Teva we know that young children learn best when they are actively involved. Whether playing sports, gardening or running in our fields, our campers are learning through everything we do!

**Grow**

Our focus on Outdoor Play is a natural fit for every child. Being outside allows kids to engage all their senses and our team of teachers celebrates the growth of each camper.

# UPCOMING EVENTS



WEEKLY			
WORSHIP			
<b>Fridays</b>	CAYA "Come As You Are" Service	6:30pm	<a href="#">Facebook Live</a> or <a href="#">YouTube</a>
	Shabbat Services	7:30pm	<a href="#">Facebook Live</a> or <a href="#">YouTube</a>
	In-Person Kabbalat Shabbat Service	6:30pm	<a href="#">RSVP Online</a> or (248)737-8700
<b>Saturdays</b>	Tish	9:00am	<a href="#">RSVP</a> to receive Zoom link
	Shabbat Services	10:30am	<a href="#">Facebook Live</a> or <a href="#">YouTube</a>
<b>Sundays</b>	Morning Minyan	10:00am	<a href="#">RSVP</a> to receive Zoom link
GROUP MEETINGS			
<b>Mondays</b>	Monday Morning Musings	9:00am	<a href="#">Facebook Live</a> or <a href="#">YouTube</a>
<b>Wednesdays</b>	AA, ALANON	8:00pm	<a href="#">RSVP</a> to receive Zoom link

MONTHLY			
GROUP MEETINGS			
<b>Tuesdays</b>			
May 4, June 1	Book Club	7:00pm	<a href="#">RSVP</a> to receive Zoom link
May 11	Hot Topics	8:00pm	<a href="#">RSVP</a> to receive Zoom link
May 18	Master Speaker Series	7:30pm	<a href="#">RSVP</a> to receive Zoom link
May 25	Board of Directors Meeting	7:00pm	
June 17	Board of Directors Meeting	7:30pm	
<b>Thursdays</b>			
June 17	Annual Congregational Meeting	7:00pm	<a href="#">RSVP Online</a> or (248)737-8700
<b>Fridays</b>			
May 28	Bim Bom Baby	10:00am	<a href="#">RSVP</a> to receive Zoom link

ANNUAL / SPECIAL EVENTS			
May 14 • Friday	Graduation Service	6:30pm	<a href="#">RSVP Online</a> or <a href="#">YouTube</a>
May 15 • Saturday	Pop Up In the Park with TLC	12:30pm	<a href="#">RSVP Online</a> or (248)406-4255
May 16 • Sunday	Confirmation Service	7:00pm	<a href="#">YouTube</a>
May 22 • Saturday	TLC Garden Party	12:30pm	<a href="#">RSVP Online</a> or (248)406-4255

HOLIDAYS			
May 16/17 • Sunday/Monday	Shavuot		Temple Office closed
May 31 • Monday	Memorial Day		Temple Office closed



## Have you ever wondered, “What fund should I donate to and where does the money go?”

In every issue of the *Scribe*, we recognize donations that arrive to Temple. We often get questions about the different funds, so we thought we would take a moment to describe what each one specifically means. A restricted fund is held in a separate account and carries the amount over from year to year. A non-restricted fund is used each year and the funds are not carried over. You can make your tribute gift online at [www.shirshalom.org/payment.php](http://www.shirshalom.org/payment.php) or by calling the Temple Office at (248)737-8700

### **ADULT AND CHILDREN CHOIR FUND**

*Restricted fund assisting Temple with programming for those with special needs.*

### **BEAN, ETHAN, WELLNESS FOUNDATION**

*Restricted fund supporting programming and opportunities to strengthen the mental health of our members.*

### **BLANK FAMILY ENDOWMENT FUND**

*Restricted fund to benefit the musical programming for Temple Shir Shalom.*

### **CANTOR PENNY M. STEYER DISCRETIONARY FUND**

*Restricted, donations are used at Cantor Penny's discretion towards strengthening our community.*

### **CHERNACK-RONIE FAMILY FUND**

*Restricted fund supporting Introduction to Judaism Educational Programming.*

### **COOPER FAMILY MUSIC FUND**

*Restricted fund supporting music programming, musicians in residence and other musical opportunities at Temple.*

### **FISHMAN, ART, BURNING BUSH FUND**

*Restricted fund for the Burning Bush landscaping area at Temple.*

### **FRANK, CAROLE & HENRY, INTERFAITH GARDEN**

*Maintaining the sanctity and beauty of the Interfaith garden.*

### **FRANK, HY & ESTHER, FAMILY ASSISTANCE FUND**

*Restricted fund providing financial assistance for Temple's educational opportunities for families in need.*

### **FRUMAN, ALBERT AND DOROTHY, FOUNDATION**

*Restricted Fund supporting b'nai mitzvah families in need of assistance.*

### **GINN, JIM, EDUCATIONAL ARTS FUND**

*Restricted fund supporting Temple's art-based educational programming for our Youth.*

### **GOODMAN FUND FOR THE PERFORMING ARTS**

*Restricted fund to bring unique and innovative performing arts to Temple Shir Shalom.*

### **KATZ, LILIANN & ELY, MEMORIAL SCHOLARSHIP FUND**

*Restricted fund to provide annual scholarships to students in need.*

### **KURJAN, DR. MARNI GROSSFELD, FUND**

*Restricted fund providing scholarships to students needing financial assistance.*

### **LANDSBERG, JAN, EDUCATION FUND**

*Restricted fund supporting lifelong learning at Temple Shir Shalom.*

### **LEIKIN, GEORGE & CELIA, PROGRAM FUND**

*Restricted fund providing opportunities to strengthen individuals emotionally and physically*

### **LEVINE, MAURA, SPECIAL EDUCATION FUND**

*Restricted Fund supporting special education and inclusion opportunities at Temple.*

### **LEWIS BASIC NEEDS FUND**

*Restricted fund providing general assistance to individuals in need.*

### **LINKNER, MONICA, ADOPTION FUND**

*Restricted fund supporting families with the process and experience of adoption.*

### **LYNN & MINDLIN MAIMONIDES WELLNESS FUND**

*Restricted fund for Temple members to subsidize and promote wellness and health education.*

### **MAZIUS, JESSICA FONER, YOUTH SCHOLARSHIP FUND**

*Restricted fund providing religious school scholarships and financial assistance for children in need at Shir Shalom.*

### **MORAY, JAMES "JAMEY, SPECIAL NEEDS FUND**

*Restricted fund assisting Temple with programming for those with special needs.*

### **MYERS/JANOWER SCHOLARSHIP FUND**

*Restricted fund helping families in need with the expenses related to b'nai mitzvah education.*

### **NARENS, JUDITH, MEMORIAL FUND**

*Restricted fund supporting programming which brings temple members together.*

### **NATHAN YOUTH FUND**

*Restricted fund creating opportunities to strengthen youth programming at Temple and providing financial assistance for opportunities to students in need.*

### **NOSANCHUK, MICHAEL, SCHOLARSHIP FUND**

*Restricted fund providing scholarships for school, camp, trips to Israel, and other trips for youth.*

### **PRESCHOOL TRIBUTES / GIVING**

*Assisting Temple Shir Shalom's Preschool with everyday expenses.*

#### **RABBI MICHAEL L. MOSKOWITZ'S DISCRETIONARY FUND**

*Restricted, donations are used at Rabbi Michael's discretion towards strengthening our community.*

#### **RABBI DANIEL A. SCHWARTZ'S DISCRETIONARY FUND**

*Restricted, donations are used at Rabbi Daniel's discretion towards strengthening our community.*

#### **RABBI DANNEL I. SCHWARTZ'S DISCRETIONARY FUND**

*Restricted, donations are used at Rabbi Dannel's discretion towards strengthening our community.*

#### **RAIBER, MARY & HENRY, MEMORIAL "MENSCH" FUND**

*Restricted fund facilitating help to those in need through the kindness we are able to share.*

#### **RAMBAM TIKKUN OLAM FUND**

*Restricted fund supporting social action initiatives in our community and around the world.*

#### **RELIGIOUS SCHOOL (SHORESH) LIBRARY FUND**

*Assisting with the purchase of library and curricular print and digital materials for our Religious School*

#### **RELIGIOUS SCHOOL (SHORESH) FUND**

*Assisting Temple Shir Shalom's Religious School with everyday expenses.*

#### **ROHAN, LORRAINE & AL, MADRICHIM PROGRAM FUND**

*Restricted fund helping to strengthen Madrichim programming, as well as enhancing the arts and education brought to our youth.*

#### **ROMANIK, SUZI, PRINT FUND**

*Supporting innovative and creative printing projects for Temple Shir Shalom.*

#### **SACHS, SHIRLEE E., LIBRARY FUND**

*Restricted fund assisting and sharing a passion for literature with religious school students..*

#### **SAKWA FUND**

*Restricted fund creating opportunities for bettering our community and helping those in need.*

#### **SANDERS, JAMI ANN, YOUTH FUND**

*Restricted fund providing Shir Shalom youth with scholarships for experience expenses.*

#### **SAPERSTEIN PRESCHOOL FUND**

*Restricted fund for funding the future of the Shir Shalom Preschool.*

#### **SCHWARTZ, DANNEL I., LEGACY FUND**

*Restricted fund promoting innovation and programming to sustain Shir Shalom into the future.*

#### **SCHWARTZ-AVERBUCH YOUTH SCHOLARSHIP FUND**

*Restricted fund providing scholarship opportunities for Temple's youth.*

#### **SOLOMON, ABRAHAM B., MEMORIAL FUND**

*Helping Temple honor and support Jewish war veterans.*

#### **SONNINO, SANDRA & GIORGIO, FUND**

*Restricted fund honoring founding members Sandra and Giorgio, to inspire new initiatives at Temple, and support youth scholarship opportunities.*

#### **SSTY/NFTY TRIBUTES**

*Assisting Temple Shir Shalom's SSTY/NFTY programs with everyday expenses.*

#### **STEINBERG, SHIRLEY R. AND IRVING H., HIGH HOLIDAY MUSIC FUND**

*Restricted fund helping support music opportunities during the High Holy Days.*

#### **STILLMAN, EMILY, FUND**

*Restricted fund to educate the community about meningitis, vaccine preventable diseases, and the importance of organ/tissue transplantation.*

#### **TORAH RESTORATION AND REPAIR FUND**

*Restricted fund supporting the preservation and lives of our Torahs.*

#### **TEMPLE SHIR SHALOM AUDIO/VIDEO/TECH FUND**

*Restricted fund to subsidize the Audio/Video/Tech purchases at Temple for better online and in-person experiences.*

#### **TEMPLE SHIR SHALOM CHAPLAINCY FUND**

*Restricted fund Supporting Shir Shalom's Chaplaincy Program in ways to keep our members connected*

#### **TEMPLE SHIR SHALOM GENERAL FUND**

*Donations go towards general expenditures at Temple.*

#### **TEMPLE SHIR SHALOM PRAYERBOOK FUND**

*Restricted fund for assisting with the creation and printing of new TSS prayer books.*

#### **TEMPLE SHIR SHALOM VOLUNTARY BUILDING FUND**

*Donations to go towards general maintenance and upgrades at Temple.*

#### **WARTELL, DANA, CANCER SUPPORT FUND**

*Restricted fund providing support to families experiencing the challenges of cancer.*

#### **ZIFF MEMORIAL WALL FUND**

*Maintaining the sanctity and beauty of the memorial wall that honors the memory of our loved ones.*

#### **ZUPPKE, MARLA YOUTH FUND**

*Restricted fund subsidizing youth programming opportunities and scholarships for students in need.*



## Have you ever wondered, “Who are these very thoughtful people and why are their names listed in the Scribe?”

In every issue of the *Scribe*, we recognize individuals who go above and beyond their dues commitment for our Temple’s fiscal year. We appreciate their commitment and generosity. We often get questions about the different categories, so we thought we would take a moment to describe what each one specifically means.

First, it is necessary to know that dues rates vary. At different life stages and situations, we ask different commitments from our members. That being said, we never want finances to be an obstacle to membership and we are always willing to discuss individual circumstances privately.

### TZEDAKAH CIRCLE

Tzedakah Circle participants are those who give an additional \$500 on top of their specific dues rate, regardless of which rate that is.

### VATIKIM

*Vatik* means “enduring, trusty, or strong”. *Vatikim* is also sometimes interpreted as “the most spiritually advanced”. This level of participation is for our congregants who are at the senior dues base rate and have chosen to also give above that amount.

### CHAI

Chai participants have a dues rate of \$3,445.

### DOUBLE CHAI

Double Chai participants have a dues rate of \$4,345.

### TRIPLE CHAI

Triple Chai participants have a dues rate of \$6,045+.

Each of these special dues designations helps cover Temple’s operating costs and gives us the ability to help families who need financial assistance. If you are interested in adding your name to one of these groups, please contact Ruth Holcomb at (248) 626-5700.

In addition, there are other ways to give to Temple that you may not be familiar with. Please take a look at the *Planned Giving* page on our website: [www.shirshalom.org/plannedgiving](http://www.shirshalom.org/plannedgiving) for more information.

Contact Brian Fishman to discuss next steps at (248) 737-8700 or [brian@shirshalom.org](mailto:brian@shirshalom.org). Thank you!

### TZEDAKAH CIRCLE (\$500 ABOVE DUES)

Geraldine Bennett  
Barbara & Jack Dorfman  
Marilyn Finkel-Brown  
Patricia & Daniel Frank  
Sally Ginn  
Lola & Joseph Goldring  
Barbara & Donald Janower  
Linda Klein  
Sharon Meisel  
Louise Oram  
Marilyn & Robert Segal  
Joyce & David Steinberg

### VATIKIM (SENIOR DUES PLUS)

Paula Milgrom & James Barnett  
Maxine & Robert Carson  
Wendy & Lloyd Doigan  
Mandy & Joel Fisher  
Mary Frank  
Sara & Michael Frank  
Pola & Howard Friedman  
Sally & Milton Green  
Jackie & Larry Kraft  
Muriel & Bernard Moray  
Barbara & Jerome Sitner  
Eleanor & Philip Smith  
Helen & Howard Topcik

### CHAI (\$3,445 DUES)

Pam & Rob Kornfeld  
Margo & Bob Lesser  
Elizabeth & Keith Lublin  
Diane & Howard Morof  
Jackie & Joel Smith  
Terry & Jeffrey Wilner

### DOUBLE CHAI (\$4,345 DUES)

Nickole & Evan Black  
Terri & Gary Cooper  
Fran & Gary Grossman  
June Gurwin  
Jody Lipton & Geoff Kretchmer  
Sallyjo & Barry Levine  
Lori Davidson-Mertz & Steve Mertz  
Alice Brody & Ronald Ross  
Stacey & Gary Shuman  
Marjie & Steve Ziff

### TRIPLE CHAI (\$6,045 DUES)

Charles Keys  
Ethel Rosenblatt  
Lisa & Joshua Sherbin

# TRIBUTE & ENDOWMENT FUNDS

## A.B. SOLOMON FUND

*In memory of:*

**Edwarda Zakalik** – Sandy & Dr. Neal Mozen

## ART FISHMAN BURNING BUSH FUND

*In memory of:*

**Dr. Gary Fishman** – Joanne & Michael Bellet, Barbara & Stan Bershad, Lori and Mark Cohn, Michele & Michael Colton, Terri & Gary Cooper, Lola & Joseph Goldring, Diane & Ken Jacobs, Celia & George Leikin, Frannie & Phil Levin, Susan & David Lindow, The Mukamal Family, Ilene Schlaff, Jayne & Lawrence Steel

**Molly Hechler** – Joel, Michelle and Wallis Hechler

**Edward J. Levine** – Shirley & Dr. Edward Hirsch

## CANTOR HENRY & LOUISE BLANK MUSIC ROOM ENDOWMENT FUND

*In memory of:*

**Ken Monicatti** – Beth Monicatti-Blank & Andrew Blank

## CANTOR PENNY M. STEYER'S DISCRETIONARY FUND

*In honor of:*

**Margie Franklin's 75th Birthday** – Sandy & Len Mege

**Gary Grossman, as the finest vaccine maven** – Dori Goldman

## COOPER FAMILY MUSIC FUND

*In memory of:*

**David Blank, Adele Kornfeld** – Terri and Gary Cooper

**George Cooper, Leo Cooper, George Krefman** – Rose Cooper

## DANA WARTELL CANCER SUPPORT FUND

*In memory of:*

**Sy Goodman** – David Zupke

*Just because*

David Zupke

## GEORGE & CELIA LEIKIN PROGRAM FUND

*In honor of:*

**Jonah Cimmino's Bar Mitzvah** – Celia & George Leikin

## HYMAN AND ESTHER FRANK FAMILY ASSISTANCE FUND

*In memory of:*

**Benjamin Newman M.D. & Cecelia Esther Frank** – Sara & Michael Frank

## JAMI ANN SANDERS YOUTH FUND

*In memory of:*

**Mother of Paul Butz** – Gary Sanders

## LORRAINE & AL ROHAN FUND

*In memory of:*

**Dr. Gary Fishman** – Jayne & Lawrence Steel

## LYNN & MINDLIN FAMILIES MAIMONIDES WELLNESS PUBLICATION FUND

*In memory of:*

**Dr. Gary Fishman, Edythe "Boo" Klein, Helen Brodley Ragins,**

**Edwarda Zakalik** – Blanche, Alan and Bethany Mindlin, Alicia Mindlin, Max and Bailey Columbus

## MARLA ZUPPKE YOUTH FUND

*In honor of:*

**My great-granddaughter Ava Marlie** – Phyllis Horovitz

*In memory of:*

**Dr. Gary Fishman** – David Zupke

## MICHAEL NOSANCHUK SCHOLARSHIP FUND

*In memory of:*

**Dr. Gary Fishman** – Laurie Nosanchuk

## MYERS/JANOWER B'NAI MITZVAH FUND

*In memory of:*

**Fanny Greenberg** – Jaye Cooper

**Debra Nessel** – Rena & Martin Janower

## PRESCHOOL FUND

*In memory of:*

**Edythe "Boo" Klein** – Terri and Gary Cooper, Barbara,

Natasha & Chris Dabrowski, Rachel Estandig, Deanne Ginns

Gruenberg, Nan & Eric Halperin, Kathleen & Steven Kopitz,

Debbie & Mark Landau, Laurie & Fred Leeb, Sue & Gordy Leff,

Nicole Mazur, Nancy Shapero, Gloria Wolok, Patty & Irv Yellin

**Rose Mege** – Sandee & Len Mege

## RABBI DANIEL A. SCHWARTZ'S DISCRETIONARY FUND

*In memory of:*

**Paula Greenberg** – Rhonda Merzin

**Anita Sosin** – Nancy & C J Johnston

## RABBI MICHAEL L. MOSKOWITZ'S DISCRETIONARY FUND

*In memory of:*

**David Blank** – Betsy & Keith Lublin

**Shirley Malach Bockoff** – Deborah & Philip Ross

**Henry Horne, Sadie Miller** – Myrna Horne

**Samuel Rich** – Joyce Golden & Ronald Rich

**Shosana Rival** – Eva & Jan Rival

**Sanford Rope** – Susan & Dicron Mahakian

**Gertrude Shure** – Joanne Campbell

## RELIGIOUS SCHOOL FUND

*In honor of:*

**Jonah Cimmino** – Marilyn & Marc Schultz

**Norma Kleiff's Birthday** – Ellen & Mitch and Robin & Joel Nelson



## TRIBUTE & ENDOWMENT FUNDS CONT'D

### SHIRLEY R. & IRVING STEINBERG HIGH HOLIDAY MUSIC FUND

*In memory of:*

**Dr. Gary Fishman** – Joyce & David Steinberg

### TEMPLE SHIR SHALOM GENERAL FUND

*In memory of:*

**Mary Jean Blau** – Joanne & Michael Bellet

**Necie Conroy** – Ilene Alpert, Dianne & Robert Alpiner

**Dr. Gary Fishman** – Rhonda Merzin

**Ronald A. Goldblatt** – David Bandler

### TEMPLE SHIR SHALOM GENERAL FUND CONT'D

*In memory of:*

**Seymour (Sy) Goodman** – Karen & Glenn Saltsman

**Irving Lipton** – Natalie Lipton Schwartz & Maxwell Schwartz

**Lawrence F. Sklar** – Beverly Sklar

*To thank:*

**Temple Shir Shalom for of the wonderful programming during the pandemic** – Janet & Henry Moses



# In Remembrance



*We regret with sorrow the passing of:*

## JON GOLDSTEIN

*brother of Jeremy (Janice) Goldstein*

## EDZIA ZAKALIK

*mother of Karol Zakalik (Margo Gilbert)*

## ARNOLD SLUTZKY

*husband of Marlene Slutzky  
father of Eric (Wendy) Slutzky*

## NECIE CONROY

*mother of Herbert (Joan) Conroy*

## GARY FISHMAN

*son of Arthur (Jeanne z"l) Fishman*

## MARJORIE PENTZIEN

*mother of Donald (Cheri) Pentzien*

## GLORIA SIEGEL STOLIAR

*mother of Pamela (Mark) Rosenblum  
grandmother of Amy (Nico) Schultz*

## MARILYN ROWENS

*mother of Bradley Rowens  
(Dr. Julie Finn)*

## MILES BRASCH

*father of Abbey (Kenneth) Nathan*

## NEAL SOBOLO

*brother of Helaine Wolf*

**SUN 4/25 @10am**

**FRI 4/30 @6:30pm**

**SAT 5/1 @10:30am**

Pearl Adler  
Ruth Africh  
Louis Alekman  
\*David Beck  
Carole Binder  
Virginia M. Blackport  
Dr. Samuel B. Bleier  
Herman Bobry  
Louis Bratt  
Margaret Brown  
May Bussell  
\*\*James Chandler  
Mary Coleman  
David Cook  
Zella Daugherty

Minnie Edwards  
Bob Ellis  
Bertram Feldman  
Jeanette Feldman  
Ethel Feldstein  
Sybil Fenkell  
Ellyce Field  
Albert Fischer  
\*Cecelia Esther Frank  
Harry Freitag  
Eric Marshall Gilbert  
Miriam Goldring  
\*Frances S. Grand  
Jack Grant  
Charlotte Hoffman  
Rose Horwich  
Joyce Jackson  
Gerald "Jerry" Jacobs  
Rachel Kahan

Lori Gilbert Kaye  
\*David Kunzman  
David Lederman  
Rose Ledger  
Joyce Roslyn Leopold  
Merle Leserman  
Jakob "Kuba" Liwazer  
Burton Mahler  
Murray Henri Miller  
Allen Mirsky  
Erwin Nyman  
Ann Nyznyk  
Evan Tyler Otis  
Sidney "Peter" Patterson  
Ben Paull  
Julie Pevos Sias  
Stuart Jay Pudavick  
Murray Robinson  
Gertrude Rosen

Shelley Rosenfield  
Edward Salem  
Kalman Schwartz  
Hilda Shapiro  
Judith Rosen Shiffman  
Lawrence Sikora  
Richard Silverstein  
Elizabeth "Zsoka" Simko  
Steven Simons  
Sarah "Sallie" Solomon  
Sandra O. Sonnino  
\*Paul Rodney Stein  
Libby Taitelbaum  
Melvin VanDuren  
Mary Varon  
Martha Weingart  
Rube Weiss  
Robert Creswell West, Jr.  
Julius Zuckerman

**SUN 5/2 @10am**

**FRI 5/7 @6:30pm**

**SAT 5/8 @10:30am**

Marvin Bershas  
Faye Bircoll  
Bernard Bloch  
Jacob Cohen  
Rabbi Sissy Coran  
Robert Cutler  
Lori Sue Dovgan  
Rae Epstein  
Harriet Fink  
Elizabeth Sue Flapan  
Jane Focht  
Lenore Fogelman  
Stuart Freedman  
\*Eliot Ira Friedman

Norman Gallant  
\*Fanny Gold  
Ida Goodman  
Steven Gurwin  
Ken Heiser  
Florence Hillenberg  
Dr. "Doc" Lee R. Kjelson  
Florence Koltonow  
Freyda Holdengraber Kramer  
Harry Emanuel Kretchmer  
\*Jack Kunzman  
Ronda Kushner  
Janice Levine  
Shirley Malamud  
Avram "Andy" Mally  
Morton Marx Margolis  
Edward McGill  
Marvin S. Mevis  
Melvin "Mel" Miller

Bernice Mizels  
Harold Morse  
\*Harry Must  
\*Stephen Michael Newman  
Valerie Nock  
Harold Ordin  
\*Bashia Pick  
Jochanan Rzepka  
George Segal  
Maxine Sharp  
\*Leonard Silk  
\*Oscar "O.D." Silverstein  
Dorothy Sobol  
Beatrice Sonders  
June Stern  
William Joseph Strachan  
\*Larry M. Swartz  
Harold L. Tobin  
Bernie Toby

Dr. Arthur Victor  
Pamela Weinstein  
Ethel Weisblatt  
\*Elliott Weston  
Nathan Zolkower  
Nathan M. Zumberg

\* denotes a plaque on our **Ziff Family Wall of Remembrance**

\*\* denotes a plaque in our **Carole & Henry Frank Interfaith Garden**

# In Remembrance

**SUN 5/9 @10am**

**FRI 5/14 @6:30pm**

**SAT 5/15@10:30am**

Ann Gloria Abrams  
Shelly Alspector  
Fredella Berlin  
Irving Biel  
\*Ruth Bloch  
Rose Bratt  
David Brody  
Fay Brody  
Manny Caplan  
Martha Ceresnie  
Max Cohen  
Margaret Coppinger  
Gerald "Jerry" Dubrinsky

Murray Eber  
\*Madelyn Farris  
Seymour D. Finkel  
Linda Fleischman  
Robert Fleischman  
Gail Silverman Freedman  
Roger Friar  
Martin Fried  
Harry Leo Gantz  
Marcus Ginn  
Howard Goldberg  
Stella Goldsmith  
Adolph Goodman  
Leonard Hack  
Kenneth R. Hoard  
Marvin Hoss  
Norman Karr

Jacob Kirsch  
\*Benjamin Kovinsky  
\*Elaine Kovinsky  
Bernice Caplan Lazerow  
Harry Lichtenfeld  
David Lieberman  
Faye Mandell  
Muriel Mann  
Jean Moore  
Alexander Ornstein  
Benjamin Pearlman  
Robert Perez  
Earnest Popper  
Edith Popper  
Norville "Nis" Rappaport  
\*Louis Reich  
Maurice Robbins

Annemarie Roeper  
Sidney Rose  
\*Samantha Erin Rosen  
Henriette Ruda  
\*Pearl Shapiro  
Joe Shepp  
\*Ronald S. Shink  
Donald Siegel  
William Sloman  
Sarabel Stern  
Phyllis Sucher  
Nate Tarnow  
David Weil  
Anna Wohlman  
Ida Wolf  
Sidney Zuckerman

**SUN 5/16 @10am**

**FRI 5/21 @6:30pm**

**SAT 5/22 @10:30am**

\*Edith Abramson  
\*A. Dolph Beckman  
Hyman Blackman  
Elaine Betty Bock  
Herman Boraks  
Dr. Melvin F. Cohen  
George Cooper  
Henry Davis  
Dr. Morris Ely Eisenberg  
\*Robert "Bob" R. Feldman  
\*Pearl Friedman  
Sarah Friedman

Ida Gorman Gelman  
Mary Gersh  
\*Dr. Arthur Goldberg  
Jeanette Komenarsky Goldberg  
Carrie Goldberger  
Bertha Golden  
\*Zina Gray  
Julius Greenberg  
\*Jack Gropman  
Robert Gurwin  
Ettie Raphael Handelman  
Murray Hozman  
Gerald "Jerry" Jacob  
Livia Katan  
Seymour "Cy" Kauffman  
Thelma Ruth Kopel

Sophie Korn  
Barbara J. Ledger-Smith  
Meyer Leshman  
Carole Joan Mazius  
Richard John Metcalf  
Ludwig August Overdick  
Dorothy Page  
Fannie Pantzer  
Lorene Harris Reid  
Anna Resnick  
Joel Rosenberg  
Gabriel Rosin  
Robert Rubin  
Ruth Ryshen  
George Seid  
Dr. Oscar U. Shapiro

\*Esther Shapiro  
Gertrude Silverman  
Muriel "Mickey" S. Slate  
Leone Sonnino  
Luisa Sonnino  
Esther Stein  
Janet Stein  
Joseph Stern  
Louis B. Stern  
Barry Tilds  
Kate Turner  
Stanley Weingarden  
Leslie Weiss

**SUN 5/23 @10am**

**FRI 5/28 @6:30pm**

**SAT 5/29 @10:30am**

Sarah Abramsky  
Janice Aird  
Burton L. Ansell  
Max Assiran  
Vicki Baldwin  
Helen Barkin  
\*Rose Barron  
\*Elsie Beck  
Anne Berman  
Marvin E. Brager  
Sabina Brodskaya  
Herbert Carson  
Joyce E. Chatz  
Rose Dobrusin

Edith Fershtman  
Margit Fleischmann  
Andrew Foltyn  
Dorothy Burstein Friedman  
Mary Gautreau  
Pearl Gorman  
Shirley Haas  
Alfred Heller  
Lawrence Horn  
Simma Ilyasova  
Philip Jacobs  
Lucille Jakobson  
Thomas Jones  
Dennis Kovan  
Marilyn Krainen  
\*Rhoda Kramer  
Martin Kruman  
Evan Lamia

\*Henry C. Lenhoff  
\*Maurice Levin  
\*Elaine T. Lipsitz  
Rose E. Mackey  
Edward Nordan  
Mathias Nouget  
John Persha  
Rose Polasky  
William Pole  
\*Irving Reiter  
\*Helen Resnick  
Beverly G. Rosen  
Michael David Rosen  
Bobbi Gail Rosenbloom  
June Rubin  
Randy Rubin  
John Doyle Ryan  
Stephen Scheer

Sol Seidman  
George D. Seyburn  
Isadore Shapiro  
Rose Shepard  
\*Dorothy Sherman  
\*Alice Silberberg  
Emma Silverman  
Rose Silverton  
Irene Sklar  
Albert Smith  
\*Nathan Sosin  
Sara Stone  
Ida Storbinsky  
Michael Vayner  
Walter Winiarski  
Jeffrey "Humphrey" Wolf  
Louis Zacks

\* denotes a plaque on our **Ziff Family Wall of Remembrance**

\*\* denotes a plaque in our **Carole & Henry Frank Interfaith Garden**

# In Remembrance

**SUN 5/30 @10am**  
**FRI 6/4 @6:30pm**  
**SAT 6/5 @10:30am**

Sophie Alekman  
Joel Alexander  
Sonja Balbes  
David Burdowski  
Richard Chadwick  
Evelyn Columbus  
\*Seymour S. Ellman  
Marvin Faber  
Yulek Gertner  
David G. Glaser  
Frank Hollander  
Sarah Hollander  
\*Seymour Paul Katzer

\*Hanni Kiff  
Steve King  
Sandra Klein  
Rosestelle Kogan  
George V. Kolos  
Barbara Bank Lackritz  
Jack Lazar  
Adolph Leib  
Martha Lewis  
Harvey Lieberman  
Edith Linden  
Lois London  
Isadore Mege  
\*Fay Rose Niedelson  
Leon Pantzer  
Robert Pincombe  
\*Isadore (Bud) Plotnick

Mary L. Pohl  
Sybil Pudavick  
Franklin Purther  
Faye Rovin  
Charles Ruben  
\*Craig Saperstein  
Marjorie Schafer  
Esther Bubbles Schwartz  
Edward Segal  
Shelby Jane Seyburn  
Charlotte Sherman  
Jason Shulman  
Manuel Sklar  
Sol Sklar  
James Sniderman  
Giorgio Sonnino  
Evelyn Soroka

Leo Stein  
\*Rae Steinberg  
\*Dr. Karl Stillwater  
Richard Sukenik  
Sy Tarshis  
Tim Thomas  
Arnold Tucker  
Benedetta Vella  
Rose Weiner  
\*Ann G. Weinstein  
Alec Weisman  
Gerald M. Wolberg  
Dr. Robert Alan Wolf  
Eva Yellen  
Milton Yolles  
Gerald Zeidman  
Gerrie Zucker

**SUN 6/6 @10am**  
**FRI 6/11 @6:30pm**  
**SAT 6/12 @10:30am**

F. Barry Abrams  
Sophia Alexander  
Molly Alpert  
Zelda Blackman  
Frederick Bloch  
Joel Bodzin  
David Brown  
\*\*August Francis Caliguire  
Joe Caruso  
LaVerne Cleary  
Laurence "Larry" Charles Curley  
Brian Dershem  
Celia Dorf

\*Marilyn Efrusy  
Dr. Kenneth Fink  
\*Rose Foster  
Morris S. Friedman  
Bettea Gordon  
Betty Goulooze  
Herbert Green  
David Henig  
Harry William Himelhoch  
Harry Hockfield  
Harry Herman Horovitz  
Mollie Ingber  
Belle Kamin  
Janet Kane  
Khasiba Kerimova  
Helen Stanek Kiebler  
\*\*Robert Koffron, Sr.  
Deborah P. Krefman

Sam Lefton  
Helen Lenhoff  
\*Alyce Levin  
Matilda Lis  
Josephine Helen Maciak  
John Mahakian  
\*Sally Milgrim  
\*Marlene Miller  
Max Miller  
Soldiers of Normandy D-Day  
Harold Noveck  
James H. O'Brien IV  
\*William "Bill" J. Pitler  
\*Esther Plotnick  
Sylvan Potashnik  
Herbert N. Reinheimer  
\*Arthur Robinson  
Joseph Rothman

\*Dr. Mischa Sachs  
Manuel Segel  
Edward Serota  
Kenneth Lloyd Shapiro  
Meyer Silverman  
\*Henrietta Sofer  
Ira J. Spoon  
Maurice Larry Stern  
Marguerite Elizabeth Strachan  
Ethel Toby  
Harold Turner  
Freda Uronovitz  
\*\*Bernice Patricia Willis  
Myron Ray Witus  
Dr. Alvin Yarrows  
Mildred Zeidman  
Julia Zipser

**SUN 6/13 @10am**  
**FRI 6/18 @6:30pm**  
**SAT 6/19 @10:30am**

Alan Abramsky  
Nathan Aronoff  
\*William Barron  
Sidney Blackman  
Teresa "Teri" Bock  
Diana Burnham  
Marion Dicken  
Abe Ernstein  
Bob Freedman  
Fanny Freedman  
Morton H. Friedman

Robert Funk  
Corrine Garber  
\*Mary Alice Gawlowski  
\*Isadore Glattstein  
Lena Goldberg  
Manuel "Manny" Goldring  
Zlota Goodman Gordner  
Alexander Greenberger  
Daniel Grossman  
Dr. Stanley "Stan" Halprin  
\*Henrietta Harris  
Sally Hindley  
Shirlee Jacobs  
Tillie Janower  
Peter Kelly

\*Leon B. Kiff  
Alex "Al" Kline  
Teddy Leopold  
Sherry Maloff  
\*Betty Nosanchuk  
Alfred Payson  
\*Fay Pearlman  
Blanche Pollack  
Shirley Raskin  
Roy Rogow  
Kenneth Rosen  
Marcia Rosin  
Jerrie Scharfing  
Ray A. Shapero  
Elaine Sott

Shirley Spoon  
Samuel Stein  
Fay G. Stern  
Gary Stern  
\*Michael Lee Stockler  
William Stoffer  
Samuel Stolovitch  
\*William Tarnow  
Valerie Thurston  
\*\*Marie Walker  
Mae Weisman  
Benjamin Zager

\* denotes a plaque on our **Ziff Family Wall of Remembrance**

\*\* denotes a plaque in our **Carole & Henry Frank Interfaith Garden**

# In Remembrance

**SUN 6/20 @10am**

**FRI 6/25 @6:30pm**

**SAT 6/26 @10:30am**

Sheldon Leonard Blair  
Rose Blau  
Harold Bloch  
Edward Blum  
Sidney Blumenthal  
Susan Burke  
\*Mary Evelyn Cohen  
Burton Carl Davis  
Samuel Erlich  
\*Lillian Fishman  
Ella Foltyn

Jeanine Carey Frebe  
Alexander Freund  
Lillian Gilbert  
Bernice Globke  
\*Shirley Gold  
Estelle Goldsmith  
Michael Greene  
Harry Grossman  
Linda Hack  
\*Werner Heilbrunn  
Irving Kane  
Herman Kaplan  
Harry Kasmer  
\*Max Keane  
Freda Kline  
Fred Kohen

Philip Korn  
Carole Jo Lasser  
Betty Lerman  
Bruce Michael Levey  
Martin Lippitt  
Howard Meisel  
Arnold Mikelberg  
Craig Newman  
Gladys Paletz  
Fred Reider  
Sarah Elizabeth Renvez  
\*Sonny Rogow  
William Rosen  
Lillian Rosinger  
Pauline Ross  
Betty Salesin

Edythe Schiffer  
Howard Schlafer  
Marilyn Schneid  
\*Edward Schultz  
Marla Scissors  
Felicia Shloss  
\*Benjamin Siegel  
\*Casey Smith  
Sydney Stern  
Cynthia Jeanne Watson  
Ethel Winer  
Jerry Wolfe  
Beatrice Zektick  
Loretta Ziegelman  
Becky Ziff  
Rabbi Bernard M. Zlotowitz

**SUN 6/27 @10am**

**FRI 7/2 @6:30pm**

**SAT 7/3 @10:30am**

Abraham Adelson  
Minnie Nathanson Adelson  
Sue Alexander  
\*Esther Berkowitz  
\*Moe Bershad  
David Buckfire  
\*Charles Cohen  
Marsha Cohen  
\*Melba Cohen  
Nathan Coleman  
Nina Cutler  
Clarence "Cal" DeRoven  
Marsha Diskin

Raymond Dubrinsky  
Seymour Faber  
Anne Feldman  
\*Lois Finn  
\*Abe Friedman  
Jeanne Garbeil  
Charlotte Gertner  
Edward Glick  
Edgar Hartman  
\*Pearl Herold  
Dr. Sidney J. Hillenberg  
Lillian Hirsch  
\*Earl Simon Hordes  
Abe Ingber  
Debra Jo Jacobs  
\*Gerald Kanarek  
Ilene Karson  
Thomas Klein

Myrtle Krickstein  
Stuart G. Lenhoff  
\*Albert H. Lentzer  
Marilyn Lipman  
Timothy Lunde  
Morris Lurie  
Nanette "Nan" V. Mainwold  
Albert Margolin  
Bernard Margolis  
Ella Meisner  
Judith Carole Mendelson  
Michael Alan Meyers  
Shirley Bertha Mills  
Marsha Moore  
Max Nyman  
\*Judith Owens-Stern  
Leslie Mark Pines  
\*Samuel Rosenthal

Joseph Roth  
Hilda Roth Frank  
\*Sam Rothfeder  
Fira Rozenberg  
Charles Rubin  
Phyllis Schwartz  
\*Rose Ginsburg Sherman  
Istir Shumshinov  
\*Bernard Sloan  
Hyman Solomon  
Beatrice Stillman  
David Weinstein  
Sadie Weisman  
Elie Wiesel  
Elaine Wolf  
Helen V. Zoia  
\*Fanny Zuckerman

\* denotes a plaque on our **Ziff Family Wall of Remembrance**

\*\* denotes a plaque in our **Carole & Henry Frank Interfaith Garden**

***A loss within our community is a loss no matter where it occurs,*** and we wish to extend our support and sympathy during this difficult time. Many of our members have asked to be informed about a death in our congregational family in a more timely fashion than the bimonthly publication in our *Scribe*.

Here are three ways to sign up for e-mail notifications of Shir Shalom families' funerals sent directly to your inbox:

1. E-mail [scribe@shirshalom.org](mailto:scribe@shirshalom.org) with "Subscribe Death Notice" in the subject line
2. To receive current notification of member family deaths, please visit your membership subscriptions ([www.shirshalom.org/member/subscriptions](http://www.shirshalom.org/member/subscriptions)) and select "Obituary Notices."

## SIGN UP FOR DAILY FUNERAL SERVICE EMAIL

*The Detroit News and Free Press* have cut daily delivery to three times a week, but you can sign up to receive daily email each day updating current and new services in our community.

To sign up, please visit:

[www.irakaufman.com](http://www.irakaufman.com)

[www.thedorfmanchapel.com](http://www.thedorfmanchapel.com)

[www.hebrewmemorial.org](http://www.hebrewmemorial.org)



# What's On My Mind...

In addition to the 27th anniversary of O.J. Simpson's low-speed highway chase and arrest, the upcoming annual Temple board meeting on June 17 signifies the transition from my term as Shir Shalom president to that of my successor. (And to answer Geoff Kretchmer's query: Yes, I do hereby commit to a peaceful transfer of power.)

As my three-year term as president of your Temple Shir Shalom approaches its end, I melancholically preface successive mileposts with "my last." My last Rosh Hashanah speech. My last board offsite. My last annual budget. My last executive meeting.



**Keith Lublin**  
President

And here we are with my last *Scribe* article.

What's left to say? This opportunity to act as Shir Shalom president has been one of my life's great honors. But frankly, and just between us, the work itself hasn't really been all that difficult. With the great professional team led by Brian Fishman, the actual operation works rather smoothly. Temple's talented board of directors with whom I've had the privilege to work for many years are creative out-of-the-box visionaries who actively wrestle to pursue our best path forward. And our clergy – including Rabbi Mike, Rabbi Daniel, Cantor Penny, and quondam yet ever-current Rabbi Dannel – are so inspiring, creative and brilliant, that even a slightly sedentary squirrel could have succeeded as president.

The only real problem we had to deal with these past few years was Covid. ("But other than that, how did you enjoy the play, Mrs. Lincoln?") The corona-crisis hit us all in different ways, some much more than others. But it certainly hit us all, and in weird ways. Even with all physical suffering, death and disease, and the vertiginous economic freefall inducing visions of Depression-era soup lines, it was the physical self-isolation that, strangely or not, so many of us found the most disturbing.

That's why, even more important than our strong financial stewardship through the budgetary challenges of this mess, I'm proudest of the way Temple connected our members with each other, in both two- and three-dimensional ways, programmatically, socially, and educationally, psychically fortifying ourselves to endure the CDC's physical-distancing mandates.

These personal interactions will continue to blossom and bear fruit as we emerge from the pandemic and be with each other in person once more. And this network of love and caring we have for each other here in our community is the fundamental foundation of our continued growth, and why I'm so convinced Temple Shir Shalom's future is so bright.



## Temple Shir Shalom

3999 Walnut Lake Road  
West Bloomfield, MI 48323

**Main** (248) 737-8700

**Billing** (248) 626-5700

**Fax** (248) 737-8862

### Rabbis

Michael L. Moskowitz

Daniel A. Schwartz

Dannel I. Schwartz

### Cantor

Penny M. Steyer

### Executive Director

Brian D. Fishman

### Director of Early Childhood Learning Center

Marsha Mitnick

### SHORESH Associate Director

Andee Liberman

### SHORESH Main Office

**Phone** (248) 406-4255

### Scribe Staff

Lenie Bershad, Audrey

Bloomberg, Sid Jacobs,

Libby Welch

### Officers of the Congregation

Keith Lublin, PRESIDENT

Terri Cooper, VP MEMBERSHIP

Howard Morof, VP FINANCE

Allison Parr, VP MARKETING

Gary Shuman, VP PROGRAMMING

IMMEDIATE PAST PRESIDENT

Joshua Sherbin

### Trustees

Jeffrey Aronoff, Michelle Bayer

Howard Blank,

Marilyn Finkel Brown,

Gayle Gold, Stephanie Kates,

Geoffrey Kretchmer

Barry Levine, Jeffrey Miller,

Michael Shapiro, Eric Tilds

Melanie West

Rabbi Michael Moskowitz

**[www.shirshalom.org](http://www.shirshalom.org)**