

HAKOL

Volume 35 No. 3
February-March 2020
Sh'vat - Nisan 5780

TBY
Temple Bat Yam
of East Fort Lauderdale

5151 NE 14th Terrace, Fort Lauderdale, FL 33334 | Templebatyam.org | 954-928-0410 | Info@templebatyam.org
Editor: Marion Fass | Email: marionfieldfass@gmail.com

Hakol brings together the messages of the season and the joy of community .

"We already have a waiting list"

TBY breaks ground for the Baer Family Early Childhood Learning Center

A lively crowd of about 100 assembled for the groundbreaking ceremony for the new Baer Family Early Childhood Learning Center on Friday January 17, 2020. Mayor Dean Trantalis of Fort Lauderdale, Fort Lauderdale Commissioner Heather Moraitis, Broward County Commissioner Lamar P. Fisher joined Rabbi David Spey, along with representatives of the David Posnack Jewish Community Center, Michael Balaban from the Broward Jewish Federation and Temple Bat Yam members.

The Baer family led the VIP visitors and TBY leaders in taking the groundbreaking shovels. A generous gift from the Baer family has enabled TBY to begin this project that will bring high quality, progressive, developmentally-focused and Jewish oriented early education to the area. Addressing the group, Jerry Baer stated that "The education of our youth, is one of the most important things we can do as a community, and this facility, will bring a true high quality program to our Jewish community. I have grown up in Fort Lauderdale and through all my participation in our temple life, I realize that the path to future involvement in the Jewish community has to begin with their involvement of our youth."

The Baer Family Early Childhood Learning Center will be a David Posnack JCC Preschool, in partnership with the award-winning Susan and Saul Singer Early Childhood Learning Center. The center will welcome children from age 3 months through Pre-K, and will also offer early care, after-school and enrichment classes



for older children. The formal opening will be in summer of 2020. Early enrollment deposits will be taken starting in April 2020, but families have already begun to sign their children up for the Center.

The lead educator for the project will be Beth Hickman. "I am ecstatic to be the director at the new Baer Family Early Childhood Learning Center and looking forward to a great partnership with the temple. My door will always be open!"

Len Weiselberg, Chair, TBY Preschool Committee, commented that "This stupendous day for our Eastside Community started about nine years ago. Rabbi Spey had been Temple Bat Yam's rabbi for a year. He shared with me that his dream was to have the best preschool on the Eastside. Sometimes dreams come true." Weiselberg is working to bring more donors on board for this project; many naming opportunities exist to support the services that the Center will bring. Architectural renderings of the school by Radakovich Architects of West Palm Beach are on display at TBY.

Groundbreaking Event



***Follow templebatyam on Instagram
for building updates!***



Early Childhood Learning Center
A David Posnack JCC Preschool

Tu Bishvat, Purim and our Tzedakah tradition

On the evening of Sunday, February 9, 2020, the Jewish people begin the holiday of Tu Bishvat (the 15th of the Hebrew month of Shvat). The rabbis derive this holiday in part from a verse in the Torah: “When you enter the land [of Israel] and plant any tree for food, you shall regard its fruit as forbidden. Three years it shall be forbidden for you, not to be eaten” (Leviticus 19:23). Being a practical people and not wanting to have to keep track of the date of planting and/or sprouting of each and every tree, the rabbis declared that Shvat 15 would be considered the birthday for all trees for the purpose of tithing. As explained on the pages of myjewishlearning.com, when the Temple stood in Jerusalem, Tu Bishvat served as the day on which farmers offered the first fruits of the trees they planted, after the trees had turned four years old. The following Tu Bishvat signified when the farmers were allowed to begin making use of the produce of the trees they planted, whether for personal or economic reasons.’ Popular rituals for this holiday were later developed by the Kabbalists, the ‘mystics’ of Judaism, with a “Tu Bishvat Seder” that utilized different kinds of fruits symbolically to take the participant on a journey into the different levels of the soul. (Join TBY Sisterhood for Seder on 2/8) In contemporary circles, many think of Tu Bishvat as Jewish Arbor Day, a day to appreciate and give thanks for trees, their fruit, and the natural world.

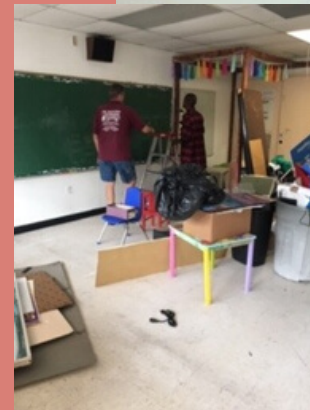
Though the idea of ‘tithing,’ giving 10% of one’s bounty, is more frequently invoked in churches than synagogues, it originated as a Temple tax. The produce tithed to the Temple as a form of sacrifice supported the Kohanim and Levites, who in exchange for the privilege of Temple service were prohibited from owning real property. With the destruction of the Temple, tithing took the form of tzedakah, acts of righteousness to support the vulnerable of our society.

Historically, Israelites had an obligation to tithe from the fourth year’s produce before they could enjoy it themselves. This practice teaches us that when we reap rewards, even from our own labor, we must first recognize that we are not the sole agent of our success. First, we thank the Source of Creation in the form of tzedakah, supporting and meeting the needs of our community. This helps us to appreciate our connections to the economic and social landscape in which we exist and, hopefully, flourish. In this way, we acknowledge that the success of greater community helps to ensure our success as well; a rising tide raises all ships. So we begin the year designating a portion of our income as, “Not mine” and budget accordingly.

The celebration of the holiday of Purim in March also includes a tzedakah, in the form of Shalach Manot, or gift baskets to family and to the poor. They are to be filled with food that is ready to eat — pastries, wine, candy, chips, and other snack foods certainly count. But the focus on sharing food with those in need continues here, as it does in TBYs Empty Bowls dinner (3/31). Tu Bishvat and Purim both encourage us to consider our communal responsibilities, from within an ethical and spiritual framework. Just imagine how different the popular narratives about taxes might be if we all embraced these lessons.



Preschool Progress; we have signed the contract and started!



And thanks to the
TBY Sisterhood
for a gift that will
support a classroom

**Additional
naming
opportunities
are available.
Contact us.**



Early Childhood Learning Center
A David Posnack JCC Preschool

Excitement at Gan Noar Religious School

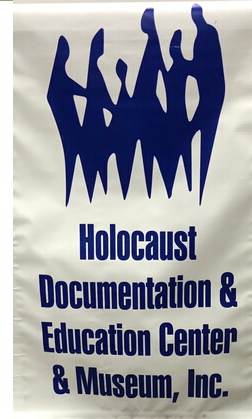
How do you have Religious school when your building is under construction? At Gan Noar, we are taking field trips, learning about Israel, and doing art projects to create the objects of Jewish life.



As we renovate, we have found old prayer books that are no longer used. Students learned that these books and other sacred objects must be given a proper burial. They went with Rabbi Spey to the Star of David Memorial Gardens Cemetery and carried out the ceremonial burial.



Religious School; Israel Then & Now



On February 2, students and parents visited the **Holocaust Documentation and Education Center** in Dania. Students were able to view Holocaust railcar and tank and then toured the exhibits on Israel: Then and Now . The exhibits reviewed the establishment of Israel, the changing boundaries, and the influx of immigrants in different times and from different places.



TOT Shabbat Schedule

Friday, February 7 @ 6:00pm - Tu B'Shevat
Sunday, March 8 @ 11am - Purim Carnival & Spiel
Friday, April 3 @ 6 pm - Passover Sedar
Friday, May 8 @ 6:00 pm - Lag B'Omer BBQ



Frosted: An adapted Purim Megillah

Purim- Frosted



Imagine Purim with a cast of characters from Disney **FROZEN**. This year's Purim Shpiel on Monday March 9 at 7 pm takes place in "Arendale" when King Ashashversos is hosting a grand ball. Here we find the characters of Frozen. King Ahashveros is Kristoff. Vashti is Olaf's fellow snow.. woman... Mordechai is Elsa and Esther is Anna. Haman, of course, is Hans.

As in the Sisterhood featured lecture, The Power Women on Purim, (2/16), Anna and Elsa are truly the Power Women of Arendale. Perhaps the writers of Frozen read the Megillah for inspiration!

TBY's singers, dancers and readers will lead us through this new way to celebrate the Purim story on Monday, March 9, 2020 at 7 pm. We will laugh, we will boo, and we will use traditional noisemakers to celebrate this holiday. This is guaranteed to be fun for the whole family.



Do you think the creators of Disney FROZEN read the Megillah first?

LET HIM KNOW ("TO THE TUNE OF LET IT GO")



Let him know
Let him know
Let Haman know you won't bow
Let him know
Let him know
Fellow Jews I'll show you how
Only to Adonai we pray
Haman won't hang on
We won't ever bend to him anyway





TEMPLE BAT YAM PURIM CARNIVAL




Sunday, March 8th
@11:30 am till 1 pm

Families, food and fun!
Wear your Disney FROZEN Frosted
costumes, if you choose.



Volunteers need, please contact Scott
at 954-928-0410



5151 NE 25th Avenue
Ft. Lauderdale, FL
for more info call the
Temple Office at 954-928-0410

Tu Bishvat: A Holiday for our time

Come celebrate Tu Bishvat with the TBY community at Sisterhood's Tu Bishvat Seder on Saturday February 8 at 12:30 pm. Cantor Wendy will lead the TuBishvat Seder. (RSVP to Joan Sternberg 954-561-6522 or Lois Pittler 954-779-7225.) You can also host a Tu Bishvat Seder at your home, using materials online.

We talk in our services about the "tree of life" and like trees, we pass our knowledge from generation to generation. Although this is a minor Jewish holiday, it has taken on greater significance as we consider the role of trees in cooling our environment and the value of plant diversity for our future.

The Tu Bishvat seder is based on biblical teachings, including a verse in Deuteronomy that identifies the 7 species of plants important to agriculture in the land of Israel, but the holiday has been discovered and rediscovered over the centuries. The kabbalists who followed the great fifteenth-century mystic Isaac Luria of Safed created new festivities for the holiday including a Seder service. They ate fruits and nuts associated with Israel and drank wine.

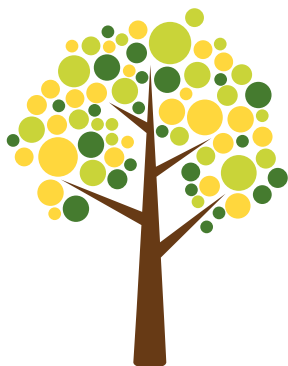
The early Zionists realized that Tu Bishvat was as an opportunity to celebrate their tree-planting efforts to restore the ecology of ancient Israel. At a more symbolic level, they saw it as a way to think about the renewed growth of the Jewish people returning to their ancestral homeland.

This year we celebrate the 50th anniversary of Earth Day, and recognize the progress we have made and the hurdles ahead of us.

Many of us grew up buying trees for Israel as part of the Tu Bishvat celebration. Huge forests in Israel are the result of this, although some question the use on non-native species in this project. Today we continue this celebration by focusing on our environment, here in south Florida as well as in Israel. What will our gardens look like as we redesign the TBY campus? Can we grow food in our backyard?

A Tu Bishvat seder and discussion materials are available online from HAZON, the Jewish Lab for sustainability.

**The fruits and
grains of Tu Bishvat
are wheat,
barley,
vines,
figs,
pomegranates,
olives, and
(date) honey**



Remember to tell your friends about
the Baer Family Early Childhood Learning Center,
opening Summer 2020

Sisterhood

The Power-women of Purim: Lecture and discussion 2/16

Please join us at 10:30 a.m. on Sunday morning, February 16th, for coffee, conversation, and more.

Everyone is welcome for a discussion of **"The Power Women of Purim: Esther and Vashti"** and their lessons for our lives. The topic for Dr Lilienthal's visit prepares us to understand the approaching holiday of Purim and will challenge your views of women in Jewish history. Please RSVP to Joan Sternberg at 954-561-6522.

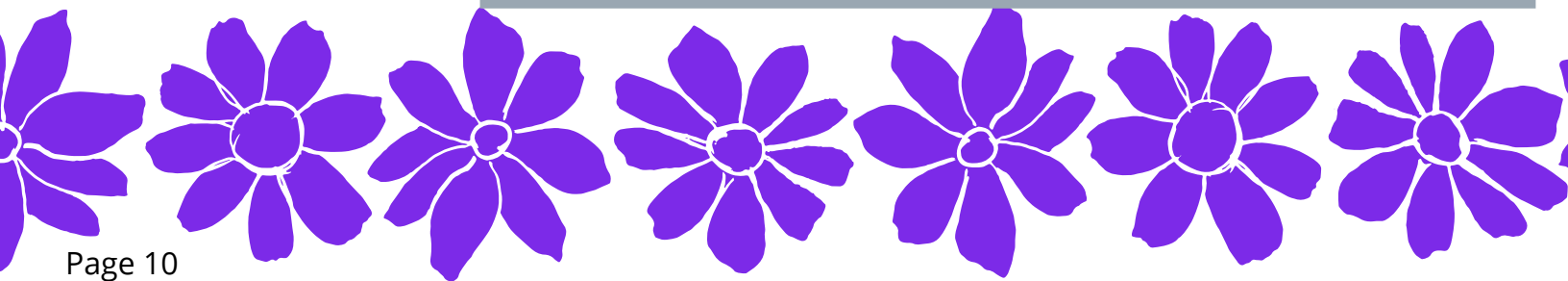
At Temple Bat Yam, we have the privilege of hosting a presentation by biblical scholar, Dr. Sandra Lilienthal. Dr Lilienthal is a Jewish Educator who enthusiastically teaches Judaism as a living religion and infuses true passion for it among those who study with her. Her 'conversations' are enriching and exciting, and many say unforgettable.



Dr. Sandra Lilienthal has a Masters in Jewish Studies and a Doctorate in Jewish Education. In 2015, she received the prestigious Covenant Award for Excellence in Jewish Education. Sandra has over 25 years of experience in Jewish Education working with all ages in both Brazil and the US. For the past 12 years, Dr. Lilienthal has focused exclusively on teaching adults. She is an Adjunct Professor at Gratz College, a Melton faculty member in both Miami-Dade and Palm Beach County and the author of Jewish education curricula for several agencies. Sandra frequently presents at Limmud conferences in the US and Canada and is invited for scholar-in-residence programs around the country.



'Ladles of Love' is originally an initiative spearheaded by Temple Beth-el of Hillsborough, NJ, which strives to deliver a meal of homemade soup and challah to those who are ill or recovering after surgery. Sisterhood is pleased to bring this program to our temple community and seek volunteers who wish to help in our endeavor. If you wish to volunteer, please contact Joan Sternberg or Lois Pittler 954-779-7255 for more details.



Social Action

18th Annual Empty Bowls

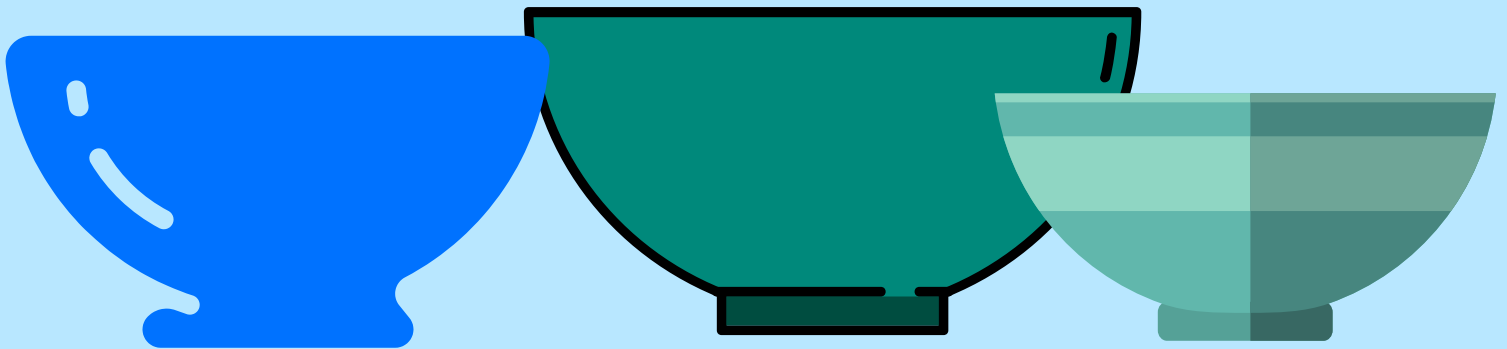
Tuesday, March 31, 2020.

Proceeds will be donated to WECARE Food Pantry

5:00 - 7:30 pm

In exchange for a donation or \$10 or more,
you are served a soup in a decorative bowl which you keep.

***Soup makers are needed; contact Lyn Saberg 954-649-0381 to volunteer
to bring a crockpot of your favorite soup to share.***



**This Mitzvah Day come give
blood and save a life...**

**Sunday,
February 23rd
9:15 am - 12:30 pm**



oneblood®
Share your power.

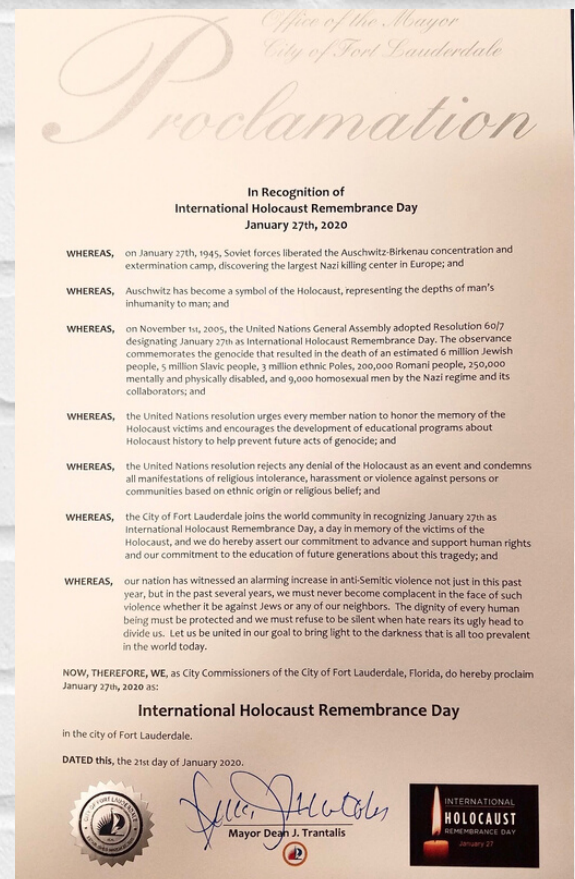
TBY and the community



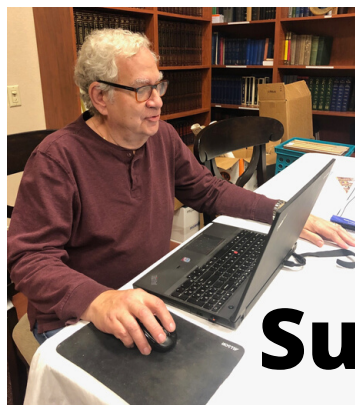
Thank you city of Fort Lauderdale City Commissioner, Steve Glassman, presented a proclamation in observance of Holocaust Remembrance Day Tuesday night at the Fort Lauderdale City Commission at City Hall- in the ceremony - Holocaust survivors and their families, Fort Lauderdale rabbis including Rabbi Yitzchok Naparstek Rabbi David Spey and Rabbi Noah Kitty, Michael Balaban, President of the Jewish Federation of Broward County and Lamar Fisher, Broward County Commissioner.



Mitzvah Day Across Broward



A Message from the President



Arnie Pittler

Sustainability at TBY



We need to take seriously our obligation to be stewards of the Earth. "If you care about Judaism, you need to also care about the planet. Jewish sustainability is part of making sure that there is a world for the next generation," said Rachel Aronson, manager of sustainability and community engagement at Hazon, which works to build sustainable communities. As we rehad our building, we at TBY have implemented new sustainability initiatives to mitigate the effects of global climate change and prevent future damage caused by extreme temperatures and carbon emissions.

- We replaced our 175 watt HID patio bulbs with 30 watt LEDs. This will reduce our energy use by 4,250 kWh annually.
- All the existing 85 florescent fixtures in the school are being replace with LEDs. This will be a savings of over 5,000 kwh annually.
- The existing fluorescent lamps in the social hall, kitchen and offices will be replaced over time with LED bulbs.
- We are eliminating the use of Styrofoam, paper and plastic cups by switching to ceramic mugs and reusable drinking cups. We have purchased a dishwasher to enable this change
- As we clean out the building, we are making sure that the old steel shelves, old plastic playground equipment, will be recycled.
- All of our used electronics – Monitors, TVs, keyboards, computers, etc are being sent to electronics recycling, preventing hazardous waste from going to a landfill.
- During the renovation of the school building we will be using recycled materials whenever possible.
- Several years ago a well replaced using city water for irrigation. This eliminated putting a further burden on the City of Fort Lauderdale's aging water treatment plant.
- We are installing an electronic information center at the entrance to the Social Hall. We are doing this by repurposing an existing flat screen TV. The information center will replace our prior donor wall which created both glass and steel waste annually.

Our endowment is currently held by the Jewish Community Foundation of Broward. As the purpose of our endowment is to provide for the future, we will be working with JCF on how our funds can be invested into companies that embrace high environmental, social and governance (ESG) standards.

Your Board of Trustees is constantly looking for suggestions on how TBY can be more sustainable as we go ahead with renovations and the new Early Learning Center. We will be updating our web site to make it easier to submit these suggestions. However, in the interim, please send you ideas to info@templebatyam.org.

Upcoming Mommy & Me

(Dads, Grandparents, and sibs, too!)

Music Together Classes

Starting Sunday, March 1, 2020

9:30 am

Ages 6 months and up

Contact the TBY Office 954-928-0410 for more information



Sunday-funday Pre-Purim Mixer!

Bourbon & Burgers

Want to learn more about bourbons?
Taste various bourbon while Rabbi Spey
flips burger on the grill (veggie, too)

Sunday, March 1, 2020

5 - 8 pm

\$50 per person, RSVP TBY 954-928-0410

Bourbon selections provided by Total Wine



Mark your calendar

Tuesday, April 8th

First night Community Passover Seder

*Traditional foods, traditional prayers with your TBY
family*

More details to follow



MITZVAH DAY

SUNDAY, FEBRUARY 23

Will you make a difference this Mitzvah Day? We need your help and participation!

Rabbi Tarfon would say "It is not up to you to finish the work, yet you are not free to avoid it. " - Pirke Avot 2:16

Create

- You are invited to participate in the Hands on Craft Project for the Elderly
- Write a letter through "Stars for our Troops" to show support to those who have served in our military and to our first responders
- Planting vegetable gardens with Rabbi Spey

Save a life

- Come and donate blood through the local blood bank

Nourish

- Help make sandwiches for the homeless

Donate

- Bring canned food for the homeless
- Donate money (at registration) to the Cupboard Kosher Food Pantry
- Have BYTY/BBYO wash your car, with proceeds going to Homes, Inc.

Collect

- Bring and assemble toiletries for donation to Women in Distress
- Collect new or gently used children's books for local schools
- Collect new socks for nursing homes

9:15 am - 1:00 pm

9:15 am - Coffee & Donuts

9:45 am - Opening Ceremony

Register for Mitzvah Day:

Lyn Saberg at shameynj@aol.com or registration at the door on Mitzvah Day (with your \$18 donation)



**Look, Lisa Doderro found
another Temple Bat Yam
complete with snow-
in South Lake Tahoe!**



**Will you make a difference
this Mitzvah day ?**

**February 23, 2020
9:15 am - 1 pm**

**DON'T FORGET WE ARE COLLECTING IN THE
SANTUARY**

**New socks, travel size toiletries, books for local schools,
and canned goods**



**Come and make a
difference!**

The legacy of Joan Kline

While we mourn the loss of our beloved member, Joan Kline, we can learn so much from her dedication to Sisterhood and Temple Bat Yam. As the Sisterhood's Chair of Programming, she was the quintessential event planner, coordinating and decorating the Social Hall for Sisterhood and Temple events as well the meals. Likened to Cinderella's fairy godmother, Joan could take colored plastic, silk flowers, scraps of paper and material and create tables that could rival those found in any elegant venue. Her transforming artistry reflected her desire to achieve perfection. She never disappointed.



For many years, Joan headed the Sisterhood Flower Fund, obtaining donations for the beautiful floral arrangements which adorned the bima for Temple Bat Yam's High Holy Days. In honor and memory of her mother, Melanie Jolles-Embry has volunteered to head the Sisterhood Flower Fund. The Sisterhood is most grateful to Melanie for continuing her mother's work.

Joan's elegant demeanor did not hide her generous spirit. Joan volunteered for many years helping to provide food and clothing to the less fortunate in our community, volunteering for 'Ruth's Feeding Ministry' at the United Church of Christ in Ft. Lauderdale. Our Sisterhood has lost a great friend who taught us much, and while they say that imitation is the sincerest form to flattery, it will be hard work to rise to the level Joan achieved. To not try, however, would do her a great dishonor. And so dear friend, in your memory we will do our very best.



TBY NEEDS VOLUNTEERS!

Do you like to plan activities?

Are you committed to social justice in Broward County

Would you like to bring more families to TBY?

Can you bring your energy, your skills and talents to help TBY grow and prosper?

Please call Arnie Pittler at TBY to volunteer, 954-928-0410

Help us spread the word. Tell your friends and neighbors about our amazing, state of the art, new learning center.



Baer Family
Early Childhood Learning Center
A David Posnack JCC Preschool

2020-2021

Adventures in Early Childhood

APPLE AFFILIATED

A



David Posnack
JCC

Preschool at
Temple Bat Yam

Opening
August
2020





REGISTER: dpjcc.org/baer or 954-351-5544

Board of Trustees 2019-2020

Rabbi David Spey

Cantor Eric Lindenbaum

Lewis C. Littman, D.D., z'l Rabbi Emeritus

Wendy Autenrieth, D.M., Cantor Emerita

Trustees

Edward Boreth

Dyan Chaney

Edward Coopersmith

Judy Czerenda

Lisa Dodero

Gary Embry

Carey Fischer

Sondra Weiss-Goldman

Kathalyn Haimo

Jason Kreiss

Leslie Maister

Lyn Saberg

David Simon

Sean Thompson

Sheba Munn Thompson

Len Weiselberg

Sisterhood Co-Presidents

Lois Pittler

Joan Sternberg

Brotherhood President

Evan Goldman,

Arnold Pittler, President
Melissa Comras, 1st Vice President
Mitchell Bloch, Executive Vice President
Terri Voss, Secretary
Marc Egort, Treasurer
Jerry Baer, Past President

Good & Welfare

Best wishes to Naomi
(Past President) &
Todd Smith on their
move away



Welcome New Member

Susan Cooper
Carla & Richard Isserman



Mazel Tov

Danielle & David Marder on
the birth of their son
Naomi & Todd Smith on the
birth of a new granddaughter



Dr. Lani Braun & Dr. Ahmed Waheed
on the birth of their daughter

Condolences

To Melanie Jolles & Gary Embry and
family on the loss of Melanie's mother,
Joan Kline



We want to hear about your life. Please share both your
mazel and your sadness with info@templebatyam.org so
that we can share with TBY community