

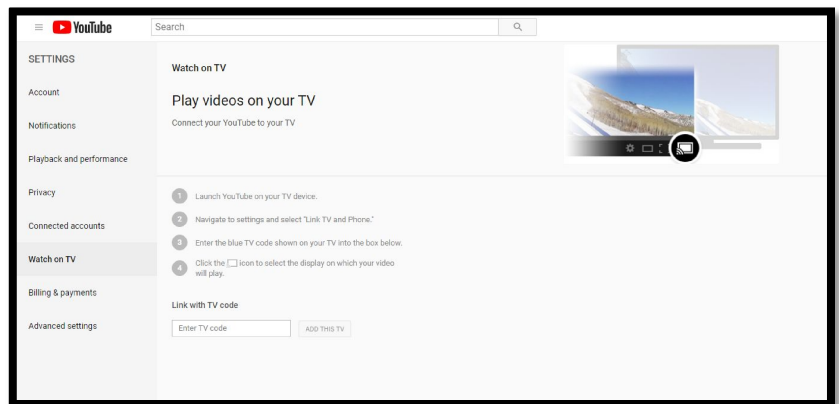
# Tutorial: View KILV's Videos on your Television!

## YOUR TELEVISION

1. Launch YouTube on your Smart TV.
2. Navigate to settings
3. Select "Link with TV." (Wording may vary, but that's the idea)
4. Write down the blue numerical code.

## YOUR COMPUTER

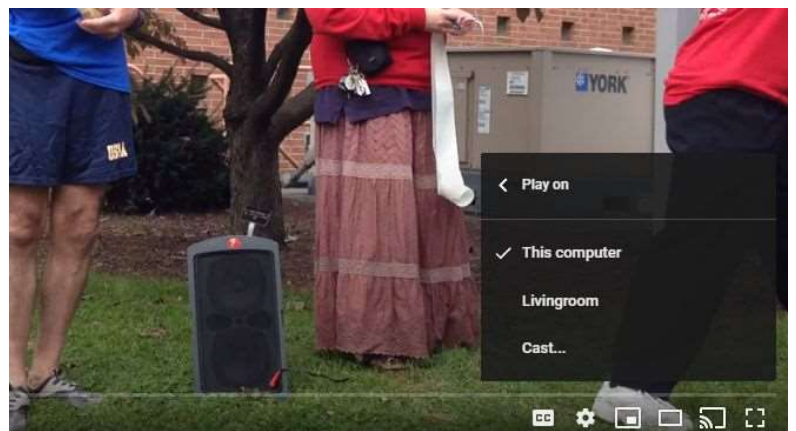
1. Open your browser and navigate to Youtube.com
2. Log into your Youtube account
3. Go to "settings" on your browser
4. Select "Watch on TV"
5. Enter the blue TV code you wrote down into the "Link with TV Code" box.



***Your PC and Browser are now connected!*** It will have a default name that you will want to note, or you can click edit and give it a friendlier name.

## THE BROWSER

1. Now, go on your browser and navigate to the video you wish to view.
2. Click the video to start it playing, then hit the space bar to pause it
3. Go to the lower right of the VIDEO (not the browser page - just the video) and click on the icon that is second from the right. It will say "Play on TV" when you hover over it.



4. Once you click it, if you successfully connected the devices, you will see your television as a choice.

***Congratulations! You can now control your video from your computer and watch it on TV.***

**NOTE:** *You may need to do this process or part of it each time you want to view the videos.*