



# 2017 Chinese Dinner and Lay-led Shabbat Service

Join us for our traditional  
Chinese Food buffet and lay-led Shabbat service  
on December 29 at 6:30 pm

Call the office to RSVP by December 22.



## Clergy and Staff

Rabbi .....	Glenn Ettman	
	rabbiettman@or-ami.org	
Cantor .....	Jordan S. Franzel	
	Cantor.Franzel@or-ami.org	
Rabbi Emeritus.....	Seymour Prystowsky	
	Rabbisp@aol.com	
Office Manager.....	Lori Dafilou	610-828-9066 x200
	LoriD@or-ami.org	
Administrative Assistant....	Nick Johnson	610-828-9066 x201
	nickj@or-ami.org	
Early Childhood Education Director .....	Michelle Ruder	610-828-1086 x400
	MichelleR@or-ami.org	
ECE Center Assistant Director .....	Carly Shaw	610-828-1086 x401
	ECECenterOffice@or-ami.org	
Interim Director of Education .....	Rabbi Glenn Ettman	
Director of Adult Learning .....	Cantor Jordan S. Franzel	
Interim Assistant Principal..	Stefanie Bock	
Administrative Support .....	610-828-4443 x300	
	office@or-ami.org	
Synagogue Office.....	610-828-9066	
	office@or-ami.org	
Religious School .....	610-828-4443	610-828-8689 Fax
	school@or-ami.org	
ECE Center .....	610-828-1086	

## Officers and Trustees

### Executive Officers

President .....	Larry Paul
Vice President .....	Heather Fritts
Vice President .....	David Nasatir
Vice President.....	Mitch Zimmer
Treasurer .....	Josh Dunoff
Immediate Past President .....	Terri Wolfheimer

### Trustees

Deb Brenner, COAtz Chair
David Cohen, Trustee
Barb Hoffman, Membership Chair
Greg Kapel, Trustee
Bill Koelewyn, House Chair
Traci Lechwar, Trustee
Helene Levinson, Religious Observance Chair
Jeff Michaels, Trustee
Susan Michels, Finance Co-Chair
Sara Neuman, Trustee
Alan Roomberg, Finance Co-Chair
Jason Salus, Trustee
Danny Schwartz, Trustee
Jen Segal, Early Childhood Education Center Chair
Jenn Weiner, Religious School Chair

**Deadline** First of the month before publication of issue. We reserve the discretion to edit for space limitations.

Congregation Or Ami is affiliated with the Union for Reform Judaism.



## December Worship Schedule

### Friday, December 1

6:15pm .....	Tot Shabbat
7:00pm .....	Erev Shabbat Service – Birthdays and Anniversaries

### Saturday, December 2

9:00am .....	Torah Study
--------------	-------------

### Friday, December 8

7:00pm .....	Erev Shabbat Service
--------------	----------------------

### Saturday, December 9

9:00am .....	Torah Study
--------------	-------------

### Friday, December 15

7:00pm .....	Erev Shabbat Service – Ugly Chanukah Sweater Shabbat
--------------	--

### Saturday, December 16

9:00am .....	Torah Study
--------------	-------------

### Friday, December 22

7:00pm .....	Erev Shabbat Service
--------------	----------------------

### Saturday, December 23

9:00am .....	Torah Study
--------------	-------------

### Friday, December 29

7:00pm .....	Erev Shabbat Service
--------------	----------------------

### Saturday, December 30

9:00am .....	Torah Study
--------------	-------------

## Our Mission

Congregation Or Ami strives to be a warm and welcoming center of Jewish life built on the foundation of Torah (Jewish Text and Tradition), Avodah (Spiritual Fulfillment), and G'milut Chasadim (Acts of Lovingkindness). We embrace the varied needs and rich diversity of our congregants, our community, and the Jewish people. We endeavor to create an inviting and inclusive community that promotes spiritual fulfillment for our congregants and supports their search for God. We take pride in the strong partnership among our clergy, professional staff, lay leaders, and congregants. Guided by Jewish values, we are strengthened by our active volunteerism and informed decision-making. We uphold the principles and ideals of the Reform movement and are a member of the Union for Reform Judaism.





# B'nei Mitzvah



## **Benjy Gelwarg**

November 11, 2017  
Son of Adam and Kim Gelwarg

For Benjy's bar mitzvah project, he hosted a day of fun and games at Miles Park on Sunday, October 1st to raise money for the Anita Kaufmann Foundation. The organization's mission is to educate the public not to fear epilepsy and seizures. It was a great day and he would like to thank everyone who came out to support him and/or sent a donation.



## **Neve Straff**

November 25, 2017  
Daughter of Ruth Ortlinghaus and Seth Straff

For my mitzvah project, I volunteered at the Jewish Relief Agency in Northeast Philadelphia. I packaged food for the needy and after a lot of boxes were full, we delivered the boxes to the apartments where the recipients live. What I really liked about this project was that I was able to see where the food went, how much it meant, and to see the joy on peoples' faces.

## **Hanukkah Havdallah in Miles Park!**

Join us on December 16 for a  
Havdallah and Menorah lighting in  
Miles park, at 5:30 PM



**Like us on Facebook  
and check in often  
to keep up-to-date  
on what's going on at  
Or Ami!**



## **Help Beautify our Synagogue with a Fine Arts Stained Glass Window Gift Card**

For a \$10 minimum contribution, the Fine Arts Committee will send a beautiful card for you, In Honor or In Memory

The card depicts one of the large stained glass windows (designed by Benoit Gilsoul) on either side of the Beit K'nesset

Just call the office at **610-828-9066**

Card will be inscribed with your personal message.  
Proceeds go toward beautification of our synagogue

# Sharing Our Simchas, Sharing Our Sorrows

## Donations

### Cantor's Discretionary Fund

#### To Cantor Franzel

In honor of Cantor Jordan Franzel and  
Congregation Or Ami's

70th Anniversary ..... Marjorie Franzel and Ira Nemeroff

#### To Cantor Franzel

In honor of Grant becoming

a Bar Mitzvah ..... Michele and Eric Shubin

### General Fund

#### To Suzi and Rick Lazarus

In memory of Sidney Pine ..... Lisa and Michael Lefkowitz  
Susan and Hal Michels

### Light of Our People

#### To Steve Rosenberg

In memory of your father, Ronald ..... Jacqueline and David Kane

#### To Marcy Goldshear

In memory of your father, Herbert ..... Jacqueline and David Kane

### Rabbi Ettman's Discretionary Fund

#### To Rabbi Ettman

In honor of Grant becoming

a Bar Mitzvah ..... Michele and Eric Shubin

#### To Rabbi Ettman

In appreciation of the High Holidays ... Marilyn and Philip Ettman

### Rabbi Prystowsky's Discretionary Fund

#### To Rabbi Seymour Prystowsky

Thank you for all that you have done .... Maris Delano

## Torah Card Fund

### To Steve Rosenberg and family

In memory of Ronald Rosenberg ..... Jane and Lowell Raeder

### To Suzi Lazarus

In memory of Sidney Pine ..... Michele and Eric Shubin  
Dina and Michael Fink  
Shirley Gottlieb  
Lori and Michael Simon  
Susan and Hal Michels

### To the Gelwarg Family

In honor of Benjy becoming

a bar mitzvah ..... Lori and Michael Simon

### To Dene Bloom

Mazel tov on being honored

during the 70th anniversary ..... Ann Levitt

### To Esther Kaplin

In honor of your birthday ..... Maris Delano

### To Marla and Larry Segal

In honor of Jeremy becoming

a bar mitzvah ..... Lori and Craig Israelite

### Yahrzeit Fund

In memory of Hymen Weiss ..... Iris and Joel Lebed

In memory of Ida Polen ..... Phyllis Polen

In memory of Ida Dashow ..... Maddy Winsten

Helene and Alex Levinson

In memory of Herbert Roomberg ..... Carol and Alan Roomberg

In memory of Gerson Feinstein ..... Trudi and Joel Azeff

In memory of Samuel Samitz ..... Dene Bloom

In memory of Julius M. Rubin ..... Rita Rubin

In memory of Hy Simon ..... Jane and Rick Simon

In memory of Sandra Weiss ..... Terri and Robert Weiss



## Exceptional service!

- Business Travel
- Unique Vacations
- VIP Travel Packages
- Luxury Travel

# ETA

## TRAVEL

# 610-940-1927

## www.etatravel.com

Suite 210, 100 Four Falls Corporate Center, West Conshohocken, PA 19428

## David Edelman, Esq.

REALTOR®

Cell: 610.908.4473

Office: 610.647.8300

Fax: 610.784.3268

davidedelman@kw.com

www.DWErealty.com

744 W. Lancaster Ave., Suite 125

Wayne, PA 19087

## kw DEVON WAYNE

KELLERWILLIAMS

Each Office is Independently Owned and Operated

## BURNS & KASMEN

### Andrew S. Kasmien

ATTORNEY AT LAW

Two Bala Plaza

Suite 718

Bala Cynwyd, PA 19004

akasmien@burnskasmen.com

215.517.5800 office

267.287.1036 direct

610.517.5800 cell

267.287.1076 fax

## Susan P. Paul, M.A., CCC/SLP

ASHA Certified Speech-Language Pathologist



## Communiverse

**Therapy Solutions:**  
**Connecting Words & People**  
**in Your Home or Ours**

1958 Butler Pike, Suite 402  
Conshohocken, PA 19428

tel] 610 564-1127

fax] 484 351-8303

www.communiverse.biz

spaul@communiverse.biz

Follow us on Facebook  
Twitter @SusanPaulAUTSLP

# Commemorate, Celebrate, Honor Your Loved Ones Forever



## With an Engraved Copper Leaf on the **Tree of Life**



The Or Ami Tree of Life is a tree of simchas, celebration and honor that continues to flourish with the names, events and dates of our milestones, achievements and acknowledgements.

What a wonderful way to commemorate a birth, an adoption, Bar/Bat Mitzvah, confirmation, wedding, anniversary, conversion, accomplishment or award, while contributing to our synagogue's beautification and sustainability.

For only \$118 per leaf, you can give a beautiful, meaningful gift that will last a lifetime. To order, please use the form below or call the Or Ami office at 610-828-9066, or order online at: [www.or-ami.org](http://www.or-ami.org) and click through the **Tree of Life Order Form**.

**Place your order now!**

---

### Tree of Life Order Form (Please print)

In Honor of: \_\_\_\_\_ Date of Event: \_\_\_\_\_

Event (i.e., Bar or Bat Mitzvah, wedding, etc.)

Greeting (Love, From, etc.)

\_\_\_\_\_

\_\_\_\_\_

Purchased by: Name \_\_\_\_\_

Address \_\_\_\_\_ City \_\_\_\_\_ State \_\_\_\_\_

Number of leaves\* \_\_\_\_\_ Amount enclosed (\$118/leaf ) \_\_\_\_\_

\* For additional leaves, please fill out the above information on the reverse side of this form.



**OBERMAYER**  
REBMAN MAXWELL & HIPPEL LLP  
ATTORNEYS AT LAW

**David A. Nasatir, Esq.**

Direct 215.665.3036  
david.nasatir@obermayer.com

One Penn Center, 19th Floor  
1617 John F. Kennedy Blvd.  
Philadelphia, PA 19103-1895  
P 215.665.3000  
F 215.665.3165

WWW.OBERMAYER.COM

**KESSLER TOPAZ  
MELTZER CHECK LLP**  
Attorneys at Law

- Corporate Governance
- Recovering Assets
- Portfolio Monitoring Services

- Complex Litigation on a Contingent Basis
- Shareholder Litigation in Jurisdictions Around the Globe

280 King of Prussia Road, Radnor, Pennsylvania 19087  
Phone: 610-667-7706 • Facsimile: 610-667-7056 • info@ktmc.com

**www.ktmc.com**

**Focused On Clients, Committed To Results**

**Alex  
PLESSETT**

**RE/MAX**  
Services, Inc.  
794 Penillyn Pike  
Blue Bell, PA 19422



OFFICE  
**215.641.2500**  
CELL  
**610.256.1296**

plessett@comcast.net  
www.alexplessett.com



DIABETIC FOOT CARE  
SPORTS MEDICINE  
TRAUMA & FRACTURE CARE  
BUNION CARE  
PLANTAR FASCIITIS  
WOUND CARE  
HAMMERTOES  
INGROWN TOENAILS & NAILCARE  
CUSTOM ORTHOTICS

600 Haverford Road  
Suite G 103  
Haverford, PA 19041  
**610-642-5040**

**www.footandanklecenteronline.com**

**Butler Pike  
Family Dentistry  
Esther Smith, DDS**  
(30 years experience)

- Cosmetic Dentistry
- Complete Dental Care
- Preventive Dentistry
- Same Day Emergency Service
- All family members welcome

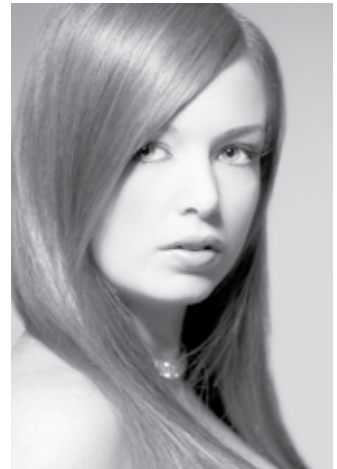


**610.825.2327**

**3048 Butler Pike  
Whitemarsh Township  
Conshohocken, PA 19428**

Hours: Monday 9am-3pm / Tuesday 12pm-8pm / Wednesday 9am-7pm /  
Thursday 12pm-8pm / Some Saturdays 9am-3pm

# Heaven & Earth Salon



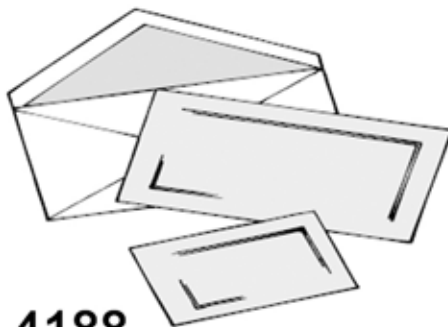
*The One Salon for all your Beauty & Relaxation Needs*

505 ½ Germantown Pike • Lafayette Hill  
610.828.0211 • [www.heavenearthsalon.com](http://www.heavenearthsalon.com)



*Rachel Leopold  
is Getting Personal*

*-Discounted Invitations  
and Stationery-  
-Paper Accessories - Kipot-  
-At Home Service-*



610-724-4188

[jbsmom20@gmail.com](mailto:jbsmom20@gmail.com)

*Bloomin' Calligraphy*



**MATCH YOUR INVITATION  
LETTERING AND COLOR**

- envelopes - place cards -  
bus & direction cards - service programs -  
- thank you envelopes - custom anything -

Dene S. Bloom

215-283-1987

[dsbjmb03@gmail.com](mailto:dsbjmb03@gmail.com)



# December 2017

SUNDAY	MONDAY	TUESDAY	WEDNESDAY	THURSDAY	FRIDAY	SATURDAY
<b>26</b> Kislev 8 9:00a Religious School	<b>27</b> Kislev 9 4:15p Tuesday Afternoon Religious School 6:30p Omdim @ Youth Lounge	<b>28</b> Kislev 10 4:15p Tuesday Afternoon Religious School 6:30p Omdim @ Youth Lounge	<b>29</b> Kislev 11 7:00p Membership Committee Meeting	<b>30</b> Kislev 12 4:18p Candle Lighting 6:15p Tot Shabbat Services Featuring the Three Year Old Classes 6:30p First Fridays Wine and Cheese "Pre-Neg" 7:00p Erev Shabbat Service	<b>1</b> <u>NETY-PAR Junior Youth Kallah (6-8 grades)</u> 4:18p Candle Lighting 6:15p Tot Shabbat Services Featuring the Three Year Old Classes 6:30p First Fridays Wine and Cheese "Pre-Neg" 7:00p Erev Shabbat Service	<b>2</b> Vayishlach Kislev 14 <u>NETY-PAR Junior Youth Kallah (6-8 grades)</u> 9:00a Torah Study 3:00p COAFTY goes to SkyZone 5:26p Havdalah 5:30p COAFTY Pizza Dinner in YL
<b>3</b> <u>NETY-PAR Junior Youth Kallah (6-8 grades)</u> 9:00a Religious School 10:00a Bar Mitzvah Meeting (Parents Only) 11:00a RSPO Meeting 4:00p Or Ami Happening	<b>4</b> Kislev 16 4:15p Tuesday Afternoon Religious School 6:30p Omdim @ Youth Lounge	<b>5</b> Kislev 17 4:15p Tuesday Afternoon Religious School 6:30p Omdim @ Youth Lounge	<b>6</b> <u>URJ Biennial</u> Kislev 18 7:00p Membership Committee Meeting	<b>7</b> <u>URJ Biennial</u> Kislev 19 9:00a Quiver Farms - Olive Oil Press	<b>8</b> <u>URJ Biennial</u> Kislev 20 4:17p Candle Lighting 7:00p Erev Shabbat Service	<b>9</b> Vayeishev Kislev 21 <u>URJ Biennial</u> 9:00a Torah Study 5:25p Havdalah
<b>10</b> <u>URJ Biennial</u> Kislev 22 9:00a Religious School	<b>11</b> Kislev 23 10:00a ECE PTO Chanukah Party - Children Only 4:15p Tuesday Afternoon Religious School 6:30p Omdim @ Youth Lounge	<b>12</b> Erev Hanukkah Kislev 24 10:00a ECE PTO Chanukah Party - Children Only 4:15p Tuesday Afternoon Religious School 6:30p Omdim @ Youth Lounge	<b>13</b> Hanukkah Kislev 25 7:00p Executive Committee Meeting	<b>14</b> Hanukkah Kislev 26 6:30p State of the Synagogue Program	<b>15</b> Hanukkah Kislev 27 9:30a ECE Center Chanukah Program - Parents Invited 4:16p Candle Lighting 7:00p Ugly Chanukah Sweater Shabbat 7:00p Roomberg Baby Naming	<b>16</b> Hanukkah Kislev 28 Mikeitz 9:00a Torah Study 5:27p Havdalah 5:30p Menorah Lighting and Havdalah in the Park
<b>17</b> Hanukkah Kislev 29 9:00a Religious School 10:00a New Horizons Meeting	<b>18</b> Hanukkah Kislev 30 4:15p Tuesday Afternoon Religious School 6:30p Omdim @ Youth Lounge	<b>19</b> Hanukkah Tevet 1 4:15p Tuesday Afternoon Religious School 6:30p Omdim @ Youth Lounge	<b>20</b> Hanukkah Tevet 2 7:00a ECE Center Closed - OPEN FULL TIME STUDENTS ONLY	<b>21</b> Tevet 3 7:00a ECE Center Closed - OPEN FULL TIME STUDENTS ONLY	<b>22</b> <u>ECE Center 3:00 PM Dismissal</u> Tevet 4 4:21p Candle Lighting	<b>23</b> Vayigash Tevet 5 9:00a Torah Study 5:30p Havdalah
<b>24</b> <u>No Religious School / Building Closed</u> Tevet 6 7:00a ECE Center Closed - OPEN FULL TIME STUDENTS ONLY	<b>25</b> Admin Tevet 7 <u>Building Closed ECE Center</u>	<b>26</b> Tevet 8 7:00a ECE Center Closed - OPEN FULL TIME STUDENTS ONLY	<b>27</b> Tevet 9 7:00a ECE Center Closed - OPEN FULL TIME STUDENTS ONLY	<b>28</b> Tevet 10 7:00a ECE Center Closed - OPEN FULL TIME STUDENTS ONLY	<b>29</b> Tevet 11 7:00a ECE Center Closed - OPEN FULL TIME STUDENTS ONLY	<b>30</b> Va-y'chi Tevet 12 9:00a Torah Study 5:34p Havdalah

A flyer this hard to look at could only mean one thing...  
**Ugly Hanukkah Sweater Shabbat is back!**

**Bust out your favorite eyesores  
 and join us for our  
 Erev Shabbat Service  
 December 15 at 7:00 PM!**

**We invite you to bring your menorahs and five candles for candle lighting.**