

NORTH SHORE  
CONGREGATION  
ISRAEL

# The Bulletin

Vol. 91 No. 7

September/October 2021 ■ Elul/Tishrei/Cheshvan 5781/5782

*The Bulletin is supported by an endowment established by Jane R. Perlman.*

## What the COVID-19 Pandemic Has Taught Us About Youth & Family Engagement

BY RABBI RYAN DANIELS page 3

"As it did for most other areas of society, COVID-19 has both profoundly disrupted how synagogues like ours operate and offered us an opportunity to expand our thinking around what we do."

## SENIOR STAFF

**Wendi Geffen**  
*Rabbi*

**Lisa S. Greene**  
*Rabbi, The Susan C. Longo  
Associate Rabbi Chair*

**Ryan E. Daniels**  
*Rabbi*

**David M. Goldstein**  
*Cantor*

**Todd Braman**  
*Executive Director*

**Dr. Roberta Goodman, RJE**  
*Education Director*

**Joel Miller**  
*Director of Operations*

## PRESIDENTS

**Jeff Echt**  
*President*

**David Cohen**  
*Brotherhood Co-President*

**David Rothschild**  
*Brotherhood Co-President*

**Frances Morof**  
*Women of NSCI Co-President*

**Mimi Horowitz**  
*Women of NSCI Co-President*

## WHAT'S INSIDE...

What the COVID-19 Pandemic Has Taught Us About Youth & Family Engagement .....	3
A Partnership, Grounded in Mutual Respect .....	4
<i>Imagine the Possible:</i> Campaign Relaunch .....	4
Welcome New Congregants .....	5-6
Mazel Tov! .....	7
We Remember .....	8

## PROGRAMS

Support .....	9
Youth & Family Community .....	10
Adult Learning & Programs .....	11
Tikkun Olam .....	12
Women of NSCI .....	12
The Ruthie & Bill Katz Archives .....	13
NSCI Calendar .....	14-15

# What the COVID-19 Pandemic Has Taught Us About Youth & Family Engagement

BY RABBI RYAN DANIELS



**AS IT DID FOR MOST** other areas of society, COVID-19 has both profoundly disrupted how

synagogues like ours operate and offered us an opportunity to expand our thinking around what we do. With the 2021–2022 school year underway and the beginning of the new Jewish year, NSCI's youth programming team is reflecting on the lessons we learned last year in order to craft meaningful experiences for families to connect, learn and grow with us this year.

NSCI's youth and family engagement is a collaborative effort of staff, families and members of the Youth & Family Community Committee (YFCC), dedicated lay leaders who partner with our youth programming staff to facilitate continuous engagement opportunities for children 0–22 and their families, nourishing their talents and aspirations and fostering meaningful relationships.

## **You Matter. We Care About You.**

As a synagogue, we strive to help foster meaningful relationships among all stakeholders, making it possible to deeply know others and to be known deeply. Unfortunately the highly polarized environment in which we live, both online and in person, as well as the albeit necessary safety mitigations of social distancing and masking to limit the spread of COVID-19, has separated us from others, and so we will work this year to help bridge the community

as well as to offer opportunities for individual families to spend quality time together engaged in meaningful Jewish learning, *tikkun olam* ("repairing the world") and fun.

## **Joyful for kids. Enjoyable for all!**

Creating joyful experiences and happy Jewish memories is a goal of NSCI's Goodman Center for Jewish Education as well as in programming for families with young children and youth groups. As Chief Innovation Officer at The Jewish Education Project, David Bryfman, PhD teaches, "For Jewish education to be successful, it must hold at its core, the mission to make people happy. If we don't strive for this, Jewish education—and by extension living a Jewish life—will remain irrelevant for the vast majority of Jews today." It is also important that when we invite families to participate in worship or other experiences with their children that the experience is enjoyable and meaningful for them too. These are opportunities to educate and empower parents in building their family's Jewish identity and practice. Therefore content must be relevant and at some level speak to all participants regardless of age or stage.

## **Beyond the regular times and spaces.**

Just like school, work, and professional sports, the pandemic has forced synagogues, too, to deliver multi-access experiences, valuing those who join in person and remotely, both live and on-demand later. This is what I mean by 'beyond the regular times and spaces' of Jewish communal life. For us this means expanding our programming

**In everything we do we must reinforce the message that each person in our community matters and we'll continue to craft programming that speaks to the diverse interests and needs of our congregation.**

beyond the standard 9 a.m.–12 p.m. on Sunday mornings or weekend Shabbat experiences, as well as curating quality online offerings for people to engage with on their own time too. And of course, beyond the in person and virtual programming for teens, we are also investing energy in meeting teens where they are—TikTok and other social media!

It is my honor to work with my fellow youth programming staff, Susan Ellenby, Andrea Dalinka, Mady Frischer, Dr. Roberta Goodman, and Jennifer McKeag, along with our partners on the YFCC to offer the exceptional programming for which NSCI is known around Chicagoland and beyond. In everything we do we must reinforce the message that each person in our community matters, and we'll continue to craft programming that speaks to the diverse interests and needs of our congregation. For more information about any of our offerings this year, please follow NSCI on Facebook (@NSCIGlencoe) and Instagram (@we.are.nsci) or visit our website (nsci.org).

Wishing you and your family great joy and many blessings in this New Year! ■

# A Partnership, Grounded in Mutual Respect



## DEAR FRIENDS,

An opinion, by definition, is not a fact. An opinion is neither right nor wrong. Displaying respect for an opinion for which one disagrees, reflects mutual respect. While highly valued, I do not consider mutual respect as a goal. Mutual respect is an essential and foundational element for an evolving and mutually beneficial relationship—a partnership.

In my opinion (reference intended), the term “partnership” aptly describes the relationship between NSCI and

each congregant. A strong partnership includes mutually beneficial obligations and responsibilities, as opposed to unilateral duties. Further, a durable, everlasting and evolving partnership is based on mutual respect.

Mutual respect is vital to the longevity and long-term success of NSCI—a large and diverse congregation. You should not be surprised. Our fellow congregants hold a diverse set of opinions dear to their hearts. Differing opinions exist across the spectrum of subjects. Some opinions reflect more serious topics—religion, politics, education, medical care, sexual preference, gender identity and

marriage. Other areas are far less important—hobbies, athletic team allegiance, culinary preferences, movies, and TV shows. The list goes on and on. These differing views originate from the diverse cultural, ethnic, geographic, and religious backgrounds of the individuals and families that comprise NSCI.

NSCI does not have a monopoly on diversity of opinion. The chart below reflects a heterogeneous Jewish population in the U.S. with varied opinions.

I suspect that a poll asking thought provoking questions among NSCI congregants would result in similar intriguing results. Further, NSCI will continue to welcome congregants with diverse opinions and perspectives. The quality and quantity of NSCI’s inclusive nature reflects mutual respect for our fellow congregants.

If we assume that NSCI’s foundation is supported by mutual respect, what is next? What would be aspirational? Let’s try empathy, distinct from sympathy. Empathy reflects the sense that one identifies with another person’s situation, experience, or feelings. As we continue the High Holy Day Season of 5782, I invite you to continue to display mutual respect as we strive for empathy within NSCI. L’Shanah Tova.

Jeff Echt  
president@nsci.org

## What is Compatible With Being Jewish?

<i>Can a person be Jewish if he/she ...</i>	Yes %	No %	DK %
... works on the Sabbath?	94	5	1=100
... is strongly critical of Israel?	89	9	2=100
... does not believe in God?	68	29	3=100
... believes Jesus was messiah?	34	60	6=100

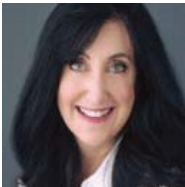
Based on the net Jewish population.

Source: Pew Research Center 2013 Survey of U.S. Jews, Feb. 20-June 13, 2013.

PEW RESEARCH CENTER

# Imagine the Possible: Campaign Relaunch

BY MARILYN PERLMAN,  
CAMPAIGN CHAIR



*“The world in which we live is one where everything is changing, faster than it ever has before. The need for flexible, nimble*

*environments that can adapt to a regularly shifting reality is more important than ever.”*  
—Rabbi Wendi Geffen

The *Imagine the Possible* Campaign focuses on raising funds for three

remaining priority areas: **Enhance Front Entry Security; Create Fluid, Flexible, and Welcoming Spaces; and Fund our Future—Growing our Endowment.**

We are excited to relaunch the campaign, recalibrated to prioritize the synagogue’s most imperative needs. We imagine a time when we will walk together into a bright, engaging facility where we can dream and explore, where we can readily gather and reconnect in friendship and faith—a synagogue that will meet the needs of today, tomorrow, and the future.

The plans will be revealed soon for the exciting transformation of Frank Memorial Hall, upgrades to our security, and the renovation of Rebecca K. Crown Hall.

Many thanks to our donors who have contributed to our reaching 80% of our \$12.5 million goal. Stay tuned for how you can participate.

For further information, please contact Todd Braman, Executive Director at toddb@nsci.org. ■

# Welcome New Congregants

We're pleased to introduce you to a few of our more than 60 new congregant families who've joined NSCI since June of 2021. Please visit [nsci.org/welcome-new-congregants](https://nsci.org/welcome-new-congregants) to learn more about the families included in this Bulletin.

## THE DUCHIN FAMILY

**Michelle, Michael, Amelia & Iris**

Ravinia area of Highland Park

**What are you looking forward to at NSCI?**

Becoming more integrated into the Jewish community, I enrolled my daughter in Sunday school and am excited for her to strengthen her knowledge about Judaism.

**Anything you LOVE about North Shore Congregation Israel already!** My sister and her family are members so I have attended events over the last 13 years with her family. My dad's yartzheit is in October and it's very meaningful to have a place to space to think about him

## THE HELFAND FAMILY

**Brad, Marnie, Scarlett (8) & Callie (6)**

Highland Park near the downtown train station

**What are you looking forward to at NSCI?**

We are excited about being part of the NSCI community and looking forward to meeting other families. We are eager to get our kids involved with Hebrew and Religious School, participate in High Holiday services, attend Shabbat services, and take advantage of the other social, philanthropic, and community-building activities.

**An interesting/fun fact about you and/or your family:** We met as undergraduates at Northwestern and were recently featured by the Alumni publication as a campus love story: <https://www.alumni.northwestern.edu/s/1479/02-naa/16/interior.aspx?pgid=36910&gid=2&cid=33514>

**Anything else that you want to share:** We just adopted a new puppy named Pacey. She is a Havanese-Poodle and a bundle of energy!

## THE JACOBS FAMILY

**Barry, Julie, Maddie, Zachary & Joey**

Highland Park

**What are you looking forward to at NSCI?**

We are looking forward to starting our children's Jewish education at NSCI and becoming a part of this community we grew up in.

**What are you passionate about?**

We are both big paddle and tennis players. Passionate about Chicago sports, trying new restaurants and one day traveling again.

**An interesting/fun fact about you and/or your family:** Barry worked on an archaeological dig when we were dating soon after we met, in Belize.

**Anything you LOVE about North Shore Congregation Israel already!** We love that our children will receive a Jewish education at the same place that we did!

## THE KAUFMAN FAMILY

**Thomas, Stacey & Evan (7)**

Braeside neighborhood of Highland Park

**What are you passionate about?**

Some of the things which we are passionate about include learning, music, travel, food and service. We support Israel and New Orleans. We love golf, tennis, and swimming.

**Anything else that you want to share:**

We are excited to become a part of NSCI and it is our sincerest hope that we find a community and sense of belonging.

## THE MELTZER FAMILY

**Lindsay, Matthew, Lucas, Ari & Molly**

West Highland Park/Sherwood Forest

**What are you looking forward to at NSCI?**

We attend the Childrenz Center Preschool and plan for all of our children to receive Jewish education and Hebrew education. We're always interested in learning more about volunteer opportunities.

**An interesting/fun fact about you and/or your family:** I own a cafe in Highland Park. My husband and I met in high school and have lived in many different places. It's fun to be back here, raising our family and giving back to our community.

**Anything you LOVE about North Shore Congregation Israel already!**

We love a lot of the families here. The education program sounds amazing and we're so excited that our kids will be starting their Jewish education here.

## THE NANUS FAMILY



**Josh, Stacie, Asher, Hazel & Tessa**  
Highland Park

**What are you looking forward to at NSCI?** Having a Jewish Community year round.

**What are you passionate about?**

As a family we love being outdoors. Hiking, going to the beach, and bike rides are some of our favorites.

**Anything you LOVE about North Shore Congregation Israel already!** Everyone has been very welcoming :)

Continued on page 6

Continued from page 5

## THE SEGAL FAMILY



**Missy & Jeremy, twins Blake & Jax**  
Highland Park

***What are you looking forward to at NSCI?***

We are looking forward to being a part of the Community and helping our family learn about Judaism, the culture, the traditions and how we can bring it home with us. Missy is also a Unit Head @ CAMP NSCI.

***What are you passionate about?***

Missy: Pilates & Spinning  
Jeremy: Professional Sports  
Blake: Dance, Gymnastics & Art  
Jax: Legos, Pokemon & Basketball  
As a family we enjoy live music and going to concerts.

***Anything you LOVE about North Shore Congregation Israel already!*** We love the warmth and inclusivity at North Shore Congregation Israel and we are looking forward to being a part of it.

## THE WEYLANDS



**Mika, Donovan, Walker, Aidan & Ella**  
McHenry

***What are you looking forward to at NSCI?***

I am interested in becoming an Adult Bat Mitzvah. This is the first congregation I have been a member of and I am looking forward to participating in many events and activities.

***An interesting/fun fact about you and/or your family:***

When Walker and Aidan went on their Birthright trip the summer of 2019, a spark was lit in my heart and is when my journey began to find a home in a Jewish community.

***Anything you LOVE about North Shore Congregation Israel already!***

Donovan and I loved how warm and welcoming everyone was to us when we came to Kabbalat Shabbat Service. Everyone helped make the "first day of school" nerves instantly disappear. It was such an inclusive experience.

Looking to help welcome new congregants?

Contact Susan Ellenby at  
susane@nsci.org or 847.835.0724.

## WOMEN OF NSCI'S

# Judaica Gift Shop

**AFTER THE HIGH HOLIDAYS, IT'S TIME TO START THINKING ABOUT...  
CHANUKAH! REALLY!!!**

The first candle will be lit this year on Sunday, November 28 (Thanksgiving weekend). We are fully stocked with menorahs, dreidels, candles, books and toys for kids, and gifts to assure a joyous celebration. Also, see us first for mezuzot, tallitot, candlesticks and kiddush cups, tzedakah boxes, and so much more! In addition, we carry the FULL LINE of Michael Aram Judaica, and are able to special order ANYTHING from his extensive collection.

**AS OF SUNDAY, SEPTEMBER 12, WE WILL BE OPEN 5 DAYS PER WEEK:**

**MONDAY, TUESDAY, WEDNESDAY & FRIDAY 10:00 AM - 1:00 PM  
SUNDAY, 9:00 AM - 12:00 PM, AND BY APPOINTMENT**

*As committed volunteers, we are proud that all our profits support the important work of WNSCI and NSCI.  
Contact us at 847.835.4009 or giftshopnsci@gmail.com.*





# Mazel Tov!

## WELCOME!

Correction:

**Cameron Beau Kornblatt**

**BORN ON APRIL 8, 2021**

Child of Lindsey & Scott Kornblatt

Sibling of Leo & Emery

Grandchild of Cheryl and Richard Sherman  
and Lynne & Michael Kornblatt

Great Grandchild of Carol & Murray Weiner,  
Charlotte Agron and Annette Kornblatt

**Stella Bree Pinzur**

**BORN ON MAY 14, 2021**

Child of Eleanor & Garrett Pinzur

Grandchild of Barbara Pinzur, Neil Pinzur,  
Judith & Andrew Gold

Great grandchild of Idele Pinzur, Sandy & Sy  
Ginsberg, Joan Jackson



**Reese Elizabeth Orlansky**

**BORN ON JUNE 19, 2021**

Child of Sara and Cory Orlansky

Grandchild of Marla & Steve Kalish, Robin  
Orlansky and Gary Orlansky

Great Grandchild of Arlene Orlansky and  
Sheila & David Varshawsky



**Luca Swibel**

**BORN ON AUGUST 13, 2021**

Child of Lili Levy & Daniel Swibel

Sibling of Naia

Grandchild of Stuart Swibel, Cindy Martin  
and David Levy

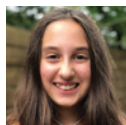
## B'NEI MITZVAH



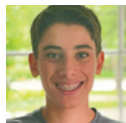
**Nicole Port**  
**SEPTEMBER 18**



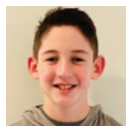
**Jonah Rosenthal**  
**SEPTEMBER 18**



**Nola Bokor**  
**SEPTEMBER 25**



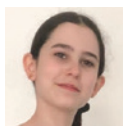
**Liam Ornstein**  
**SEPTEMBER 25**



**Gray Kanter**  
**OCTOBER 2**



**Billy Ori**  
**OCTOBER 2**



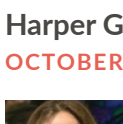
**Alexis Bander**  
**OCTOBER 9**



**Eva Merkow**  
**OCTOBER 9**



**Zoe Heller**  
**OCTOBER 16**



**Harper Glinn**  
**OCTOBER 23**



**Paige Wellen**  
**OCTOBER 30**

## ANNIVERSARY



**Madeleine & Harvey Plonsker**  
receive a blessing from Rabbi Geffen  
in recognition of their 60th wedding  
anniversary.

## NEWLYWEDS



**Josh Dillon & Effie Seiberg**  
**MARRIED ON JULY 13, 2021**



**Jill Noah & Jason Rubinstein**  
**MARRIED ON JULY 31, 2021**

**Andrea Lewin & Jared Conen**  
**MARRIED ON JULY 31, 2021**

**Niki Sutker & Jordan Schwartz**  
**MARRIED ON JULY 31, 2021**

**Abby Harris & Jake Lasky**  
**MARRIED ON AUGUST 6, 2021**

**David Jaffe & Alex Lutch**  
**MARRIED ON AUGUST 14, 2021**

**Samantha Metsa & Jake Scheinbart**  
**MARRIED ON AUGUST 21, 2021**

**Deborah Haimes & Jeff Cousens**  
**MARRIED ON AUGUST 27, 2021**

**Miriam Merens & Jason Frank**  
**MARRIED ON SEPTEMBER 3, 2021**

**Jamie Lazar & Collin Hurrell**  
**MARRIED ON SEPTEMBER 5, 2021**

**We would love to share your  
good news!**

Is there a new baby or wedding in your  
family? Please email Susan Ellenby,  
[susane@nsi.org](mailto:susane@nsi.org) so that we can share  
your simchas/celebration in an issue of  
The Bulletin.

# We Remember

## THE CONGREGATION EXTENDS ITS HEARTFELT CONDOLENCES TO THE FAMILIES OF:

### **Dina Behrens**

*Mother of Diane (Joel) Jastromb*

### **Shirley B. Freilich**

*Mother of Robert (Judith Roston) Freilich  
Grandmother of Alyse Freilich (Andrew Schulkin), Laura Freilich (Thomas Hamann), Michael Freilich (Shannon McGinnis), and Jonathan (Jessica Heiman) Freilich*

### **Michael Greenfield**

*Father of Julie (Michael) Solot  
Grandfather of Rebecca, Ariana, and Daniel*

### **Arlene M. Harris**

*Mother of Robert Harris*

### **Howard Kurland**

*Brother of Jeff Kurland  
Uncle of Daniel and Cantor Alexandra*

### **Carl Levinson**

*Father of Cori (Gary Noskin) Levinson  
Grandfather of Jeremy and Matthew*

### **Gordon Newman**

*Husband of Toby Newman  
Father of Debbie (Joe) Marks and Eric (Jenny) Newman  
Grandfather of Jonathan (Emily) Marks and Amy Marks  
Great Grandfather of Olivia and Harrison*

### **Esther Nusinow**

*Mother of Alan Nusinow and the late Dr. Steven (Helen) Nusinow, z"l  
Grandmother of Jennifer (Jeff) Marks, Benjamin (Judy), David (Nicole), Eric (Sarah), and Matthew Nusinow  
Great Grandmother of Michael, Taylor, Grant, Colton, Simone, Elliott, and Samantha*

### **Alvin Platt**

*NSCI Executive Director 1969–1987  
NSCI Director of Religious Education 1964–1969  
Husband of Barbara Platt*

### **Martyl Reinsdorf**

*Mother of Michael (Nancy) Reinsdorf  
Grandmother of Jennifer, Joseph, and Harrison*

### **Harry M. Rosenfeld**

*Father of Amy (Dan) Kaufman  
Grandfather of Dana and Jacob*

### **Sharon Rowe**

*Mother of Robert (Jill) Rowe  
Grandmother of Jack, Dylan, and Brady*

### **Dr. Jesse Schessel**

*Life Partner of Eleanor Silverman*

### **Richard Seidenfeld**

*Brother-in-law of Michelle (Jeff) Scheinkopf  
Uncle of Elizabeth and Bryan*

### **David Smith**

*Son-in-law of Judith & Saul Thomashow*

### **Ida N. Sondheimer**

*Mother of Stuart (Bonnie Lucas) Sondheimer  
Grandmother of Steven, Scott, and Melissa*

### **Sharon Schwartz**

*Wife of Steven Schwartz  
Mother of Todd and Adam (Jessica Berger) Schwartz  
Grandmother of Livia and Avi*

### **Saundra Swidler**

*Grandmother of Brad (Dena) Swidler  
Great Grandmother of Emmy and Jori*

### **Phyllis Weinstine**

*Wife of Lester Weinstine  
Mother of Juli Shapiro, Debbie (Bob) Goldstein, and Mother-in-law to Bruce Shapiro  
Grandmother of Sammi Shapiro (Sean), Mitch Shapiro (Taylor), Teddy Shapiro, Matthew Goldstein, and Bradley Goldstein*

### **Donald Wilens**

*Husband of Gloria Wilens  
Father of Robert (Amy) Wilens, Barbara (Greg) Sigel, and Richard (Carrie Cutler) Wilens  
Grandfather of Joshua, Ellie, Matthew, Emily, Julia, Dylan, and Charlie*

### **Sidney B. Zwick**

*Father of Marissa (Dan) Hopkins  
Grandfather of Torin and Kailey*

## CREATE A JEWISH LEGACY



If you are searching for meaningful ways to convey your values to future generations while protecting your assets, we invite you to become

a member of the Legacy Circle. A legacy gift (also called a bequest) is a charitable gift that is designated to benefit NSCI after your lifetime.

**For more information, please contact Todd Braman at 847.835.0724 or [toddb@nsci.org](mailto:toddb@nsci.org).**



**ARE YOU PREPARED?** Pre-arranging burial is part of sensible estate planning. As an NSCI congregant, you are entitled to purchase from a selection of burial spaces at Shalom Memorial Park at a substantial discount. If you are interested in planning ahead or learning more about the congregational plots, please contact Micah Singerman at Shalom Memorial Park at 847.255.3520. Be sure to mention that you are a congregant of NSCI.



# Support

As a caring community, we strive to meet the growing needs of our NSCI family.  
Visit [www.nsci.org/support](http://www.nsci.org/support) for a full list of resources available to you.

## HANDS OF CHESSED



Chesed is Hebrew for kindness. Hands of Chessed is a group of NSCI volunteers who want to help you during a difficult time. If you're dealing with illness, divorce, mourning or other challenges, let us drop off dinner and the warmth of our NSCI community, contactless!

*If we can help you, or if you want to join our team to spread kindness, please tell Rabbi Greene, [rabbigreene@nsci.org](mailto:rabbigreene@nsci.org). Hands of Chessed is led by Leslie Rosen & Amy Kaufman.*

## NAVIGATING THE VACCINE?

NSCI is a Lake County Community Health Ambassador. Looking for basic information on vaccine registration portals? Check out our website for up-to-date information in your area.

*Please visit [nsci.org/covid19](http://www.nsci.org/covid19).*

## FINANCIAL SUPPORT

Are you in need of emergency financial support due to the COVID-19 pandemic? Generous contributions from our congregants and JUF have made it possible for NSCI to provide one-time, confidential micro-grants to congregants who find themselves in need of emergency funds for housing issues, medical support, and food. In addition, we can help congregants find longer-term support for ongoing, systemic challenges.

*To apply for a confidential grant, please fill out the form at [www.nsci.org/support](http://www.nsci.org/support) and one of our clergy or executive director will get back to you as soon as possible.*

## FREE COUNSELING SERVICES FOR NSCI CONGREGANTS

NSCI is partnering with Jewish Child and Family Services in the coming year. Elizabeth Ury, LNHA and JCFS Chicago Director of Jewish Community Engagement will be available to work with individuals who are looking for resources to help with life events such as divorce, aging issues, mental health and parenting.

*Please email [ElizabethUry@JCFS.org](mailto:ElizabethUry@JCFS.org). This service is free to NSCI members. Additionally, you can call 855-ASK-JCFS (855-275-5237) or email [ask@jcfs.org](mailto:ask@jcfs.org) to access their other available resources including online grief support groups, counseling, Response Center programs.*

## IF YOU'RE IN NEED OF SUPPORT, EMOTIONAL OR TANGIBLE

Please visit our website [www.nsci.org/support](http://www.nsci.org/support) to learn about the various ways that we can assist you or your family and to request support. Your confidential information will go to the NSCI Clergy and we will follow up when appropriate.

## ADDICTION AND RECOVERY SUPPORT GROUPS

As a caring community, we strive to meet the growing needs of our NSCI Family.

*Please visit our website for information on how to access the following support groups [www.nsci.org/support](http://www.nsci.org/support).*

- Alcoholics Anonymous Virtual Meetings
- Al-Anon Electronic Meetings
- Alateen Chat Meetings
- Families Anonymous Virtual Meetings
- JACS (Jewish Alcoholics, Chemically dependent, and Significant others) a peer-led support group for Jews in addiction recovery, offering space for all Jews in addiction recovery.

## ALCOHOLICS ANONYMOUS MEETINGS

### WEDNESDAYS

6:00-7:00 PM AT NSCI

*For information on Alcoholics Anonymous (AA) meetings, contact Mark at 847.738.1919 or email [mopeters21@gmail.com](mailto:mopeters21@gmail.com).*

## FAMILIES ANONYMOUS MEETINGS

### TUESDAYS

7:00-8:30PM AT NSCI

For family members impacted by a loved one's addiction.

*For information on Families Anonymous (FA) meetings, contact Margot at 847.738.0306 or email [mkpeters81@aol.com](mailto:mkpeters81@aol.com).*

**Did you know we have an archive of conversations on our Hub of Support page on our website?**

*Visit [nsci.org/support](http://nsci.org/support) to find conversations about:*

- Balancing caring for elder family and self care
- Parenting during a pandemic
- Healthcare professionals on the frontlines
- NSCI/JUF communal resources for support to our congregants during the COVID-19

# The “Whys” of the Goodman Center for Jewish Education as we “Shift the Paradigm”

## Part I: The Biggest Why: Our mission

BY DR. ROBERTA GOODMAN

**EVERYTHING WE DO** in the Goodman Center for Jewish Education has a “why” behind it. We are intentional and purposeful. We listen to the voices of our stakeholders and the world around us. We seek wisdom and data that come from theories, research, and practice. This is how we went about making visible our biggest why.

The biggest “why” has to do with “why are we here?” “Why should families come to a congregational learning program? Why specifically come here to NSCI’s Goodman Center for Jewish Education?”

Through our involvement in JUF Education Department’s “Shifting the Paradigm” to foster innovation in congregational schools, we have gone through a process that answers these “why questions” about our purpose, mission, and desired outcomes.

The process of involving so many



people in a cycle of listening, ideation, prototyping, and evaluating in itself is reflective of why we are here and not just how. The leadership team that brought together our NSCI professionals, parents, and lay leaders sought to answer this question “why congregational Jewish learning for families” first in devising a mission statement. We needed this direction and desired outcomes to inform the design of our educational program.

What you see as your “why” should shape the “what and how.” We were following in the footsteps of *Visions of Jewish Education* an “attempt to identify what Jewish education might look like depending on whose perspective is reflected.” (Graff, 2012, *Who is an “Educated Jew”?* [bit.ly/2VeAOYt](https://bit.ly/2VeAOYt))

Ride on the elevator with us as you hear our “why” as stated in our mission statement:

*Parents and students partner with The Goodman Center to deliver relevant learning experiences, including classes, events, and volunteer programs, at*

*NSCI, virtually, in the home, and in the community.*

These opportunities:

- **Empower** young and old alike to become lifelong learners
- **Engage** families to deepen their knowledge of Judaism—to study, pray, celebrate, and advance social justice
- **Connect** them to one another, the congregation, the community, and the larger world
- **Relate** to participants' lives with vibrancy, meaning, purpose, responsibility, and joy

We have many new people, 40 new families who rode on the elevator these past months and who are embracing the opportunity to go on this journey with us. ■

*Next Time: “Tying Together our Biggest Why with our What and How”*

### IMPORTANT GOODMAN CENTER FOR JEWISH EDUCATION RELIGIOUS SCHOOL DATES

**SEPTEMBER 7, 8, 15, 21, 28, 29:**

No School due to holidays

**TUESDAY, AUGUST 31:**

First Tuesday of School

**WEDNESDAY, SEPTEMBER 1:**

First Wednesday of School

**SUNDAY, SEPTEMBER 12:**

First Sunday of School

**SUNDAY, SEPTEMBER 26:**

Sukkot & Simchat Torah Family Experience, 11:00-12:00pm

**SATURDAY, OCTOBER 2:**

3rd & 4th Grade Overnighter

# Adult Learning & Programs

## INTERESTED IN BECOMING AN ADULT BAR/BAT MITZVAH?

We will soon begin a new Adult B'nei Mitzvah class for those interested in this journey of learning and community. Of our 120 or so adults, age 28-95, who have already been called to the Torah, all can attest to the power of the learning and experience. You, too, can join that proud list of esteemed adults! The Adult B'nei Mitzvah classes meet two hours a week on Monday evenings. One hour is Hebrew learning with the goal of reading prayer and Torah. The other hour is about God, prayer, holidays, history, and more. At the conclusion of the two-year program, students lead a service together and are called to read from the Torah.

To learn more, please contact Rabbi Greene: 847.835.0724 or email [rabbigreene@nsci.org](mailto:rabbigreene@nsci.org).

## TORAH STUDY & SHABBAT MORNING WORSHIP

As we continue to respond to the pandemic, please note the following changes to our Saturday morning Shabbat schedule:

**Torah Study/Discussion**  
9:00-9:45 AM ON ZOOM ONLY

**Shabbat Morning Worship**  
10:15-11:00 AM\* IN PERSON\*\*  
IN PERLMAN SANCTUARY AND  
STREAMED ONLINE

Kaddish names will be read at this service.

Sign up: [nsci.org/form/shabbat-torah-study-zoom.html](https://nsci.org/form/shabbat-torah-study-zoom.html)

\*The worship service will conclude no later than 11:00 AM. \*\*Masks are required for all for worship in Perlman Sanctuary.

## SENIOR CONNECTIONS

**WEDNESDAY, SEPTEMBER 29**  
1:00-2:15 PM OVER ZOOM

Professor David Chack presents:  
"A Heart for the Truth"  
The Artistry of Mike Nichols

Register: [www.nsci.org/form/nsci-senior-connections-registration-september-2021.html](https://www.nsci.org/form/nsci-senior-connections-registration-september-2021.html)

## STUDY THE TALMUD'S "GREATEST HITS" WITH RABBI GEFFEN

**MONDAYS, OCTOBER 4-DECEMBER 13**  
(NO CLASS NOVEMBER 22)  
1:00-2:00 PM IN CROWN HALL\*

Join Rabbi Geffen to study the Talmud. From October through December, we will study a selection of the most well-known or important sugiyot (Talmudic discussions) scattered throughout a variety of Talmudic tractates. No experience necessary. Texts will be provided.

\*Masks are required inside the synagogue.

## WISE AGING: LIVING WITH JOY, RESILIENCE, AND MEANING



**SEVEN CONSECUTIVE WEDNESDAY SESSIONS, OCTOBER 6-NOVEMBER 17**  
10:00 AM-12:00 PM

Wise Aging is an engaging program that invites exploration of the rich blessings of aging wisely. Mindfulness practices such as compassionate listening, thoughtful speech, meditation, ritual and text study (English) help participants cultivate self-awareness and experience being fully present as they open to love, create meaning, and develop wisdom as paths to living a joyous and enriched life.

Space is limited. New/interested participants meet with Bev and Nina for an orientation. Cost: \$180/NSCI member; \$210 non-member. Contact [debbieh@nsci.org](mailto:debbieh@nsci.org) to register. Scholarship assistance is available for NSCI members. Contact Rabbi Greene confidentially, [rabbigreene@nsci.org](mailto:rabbigreene@nsci.org).

Rabbi Nina J. Mizrahi (left), a spiritual leader for 35 years, gleans wisdom from ancient and contemporary sources to inspire personal growth, with the purposes of understanding the mystery of being alive and human and celebrating life more fully. ([ninajanezmizrahi@gmail.com](mailto:ninajanezmizrahi@gmail.com)) Bev Shurman Lavitt, LCSW (right), is a retired clinical social worker and family therapist for over 40 years and a life-long devotee of mindfulness practice. ([bevshurmanlavitt@gmail.com](mailto:bevshurmanlavitt@gmail.com)) Trained Wise Aging Facilitators and members

of the Chicago area Wise Aging Community of Practice, Bev and Nina have offered Wise Aging groups at NSCI since 2016.

## CHICAGO BASSOON TRIO CONCERT

**FRIDAY, OCTOBER 8**  
8:00 PM

Please join us for "Lite Reeding" a concert by the Chicago Bassoon Trio featuring Susan Nigro, Elizabeth Heller, and Lynette Pralle. This concert and refreshments have been graciously sponsored by Jim Greenebaum in honor of Lilli's special birthday (a year late)! A light supper will be provided to those who attend the Kabbalat Shabbat service which begins at 6:15 PM.

Sign up: [nsci.org/form/bassoon-trio2021](https://nsci.org/form/bassoon-trio2021)

## HINEI MAH TOV: ISRAELI & AMERICAN JEWS' VIEWS OF EACH OTHER AND HOW LIBERAL JEWISH MOVEMENTS IN ISRAEL HAVE MADE PROGRESS, FACED OPPOSITION, & COOPERATED

**TUESDAY, OCTOBER 26**  
10:30 AM VIA ZOOM

**WEDNESDAY, OCTOBER 27**  
7:30 PM VIA ZOOM

With speaker presentations and speaker-led breakout groups following. This innovative program features Rabbi Naamah Kelman and Prof. Elan Ezrachi who will share their life journeys and talk about the change they have seen and made happen in Israel in their 45 years together as a couple and the progress made by Reform and Conservative Judaism in Israel, including collaboration with unconventional Orthodox leaders and institutions.

Sign up: [nsci.org/form/hinei-mah-tov-program](https://nsci.org/form/hinei-mah-tov-program)

Rabbi Kelman, Dean of the Hebrew Union College in Jerusalem, was the first woman to be ordained by HUC in Israel. Born in New York, she has lived in Israel since 1976 where she has been a leader in Jewish education and Progressive and Pluralistic Judaism for Israelis. Professor Ezrachi was born in Jerusalem and is a Jerusalem-based consultant in the areas of Jewish Peoplehood education and Israel engagement and the author of "Awakened Dream—50 Years of Complex Unification of Jerusalem." He has served in various executive and teaching roles in Israeli Jewish educational institutions.



# Tikkun Olam

## THANK YOU OPERATION BACKPACK DONORS & VOLUNTEERS!



For over two decades, NSCI has purchased, packed and delivered all of the pencils, paper and other school supplies that the students of Jordan Community Elementary School need to thrive in school each year. Thanks to this year's many donors and volunteers, NSCI was again able to provide each of Jordan's 450 students with a personalized, individually packed tote bag of school supplies to have when they returned to school after summer.

## HIGH HOLY DAYS COLLECTION FOR THE ARK COLLECTION ENDS SEPTEMBER 30

Help stock The ARK's food pantry by donating kosher, non-perishable food. Please place all donations in the appropriately labeled collection pod located at the edge of NSCI's North Parking Lot near the school entrance.

## BACK-TO-SCHOOL COLLECTION FOR CRADLES TO CRAYONS

COLLECTION ENDS SEPTEMBER 30

Help Cradles to Crayons provide essential items that Chicago's children need to thrive at home, at school and at play. Please visit [bit.ly/2B5dYld](https://bit.ly/2B5dYld) for a full list of needed items. Please place all donations in the appropriately labeled collection pod located at the edge of NSCI's North Parking Lot near the school entrance.

## ADULT MITZVAH CORPS SORTING EVENT FOR CRADLES TO CRAYONS

MONDAY, SEPTEMBER 27  
10:00 AM-12:00 PM

All adults are invited to join Rabbi Daniels and NSCI's Adult Mitzvah Corps outside in NSCI's North Parking Lot to sort and clean the items collected during our Back-To-School Collection before the pod is retrieved from NSCI and brought back to Cradles to Crayons.

Please RSVP to Sarah Duffin at [sarahd@nscl.org](mailto:sarahd@nscl.org) or 847.835.0724.

## ADULT MITZVAH CORPS THURSDAY, OCTOBER 7 10:00-11:30 AM AT CHICAGO CHESED FUND WAREHOUSE, 7045 N. RIDGEWAY, LINCOLNWOOD

Adult Mitzvah Corps is a group that volunteers once a month for different charitable organizations. Feel free to volunteer with us every month or once in a while; it's up to you. We will be shelving food. Chicago Chesed Fund has an over 44,000 square foot warehouse

in which they supply food, furniture, clothing, toys, kitchenware, etc.

*Carpooling is available from NSCI. If you would like to sign up to volunteer, contact Tracey Meyers at 847.242.1234.*

## SANDWICH MAKING AT HOME FOR THE NIGHT MINISTRY

TWICE/MONTH FROM OCTOBER-MAY

Sign up to purchase the ingredients and make sandwiches for The Night Ministry, a non-profit organization dedicated to providing essential services to Chicago's food insecure and transient population. We have agreed to make 125 sandwiches each date, and invite you to sign up to make a minimum of 25 sandwiches at home and drop off to NSCI. For those interested in a larger mitzvah project you may sign up to make as many as the full 125!

RSVP to: [www.signupgenius.com/go/70A0448AAA928A02-sandwich](https://www.signupgenius.com/go/70A0448AAA928A02-sandwich)

## BETH EMET SOUP KITCHEN



WEDNESDAY, OCTOBER 27

Volunteer to provide meals to food insecure individuals at the Beth Emet Soup kitchen. You can package meals onsite, prepare food onsite, or prepare food at home and deliver to the soup kitchen.

*To sign up or ask questions, email Brooke Hazan, our NSCI Beth Emet Soup Kitchen Liaison, at [brookeabramson@yahoo.com](mailto:brookeabramson@yahoo.com).*

# Women of NSCI

## WNSCI BOARD MEETING

SUNDAY, OCTOBER 10  
9:00 AM

## SISTERS IN THE SUKKAH

WEDNESDAY, SEPTEMBER 22  
11:30 AM

## MAH JONGG

THURSDAYS, SEPTEMBER 2, 9, 24, 30  
1:00-3:00 PM

## BOOK CLUB

TUESDAY, OCTOBER 12  
1:00 PM

## WNSCI DINNER OUT

WEDNESDAY, OCTOBER 13  
LOCATION TBD



# The Ruthie & Bill Katz Archives

## Remembering Alvin Platt

BY ELLEN (KATZ) BLOCK

**WITH GENUINE SORROW**, NSCI notes the passing of Alvin Platt, age 86, on June 17, 2021, in Palo Alto, California. For thirty years, from 1956 to 1986, NSCI was fortunate to have this man of many professional attributes and warm personal qualities on its leadership team.

Mr. Platt was born in Chicago on March 3, 1935 and became a graduate of both the College of Jewish Studies and Chicago Teachers College. He received a Master of Arts Degree in Social Sciences from the University of Chicago and was a teacher and counselor in the Chicago Public Schools and a classroom teacher at the University of Chicago Sonya Shankman Orthogenic School under Bruno Bettelheim. He always had a love of learning and his multidisciplinary studies at the University of Chicago led him to both a law degree and a master's degree in Administration. He left the school system for educational and administrative positions at North Shore Congregation Israel.

During his tenure with us, Mr. Platt taught religious school for eight years, became our Youth Director, the Assistant Director of Religious Education, and then Director of Religious Education simultaneously at both our Vernon Avenue and Sheridan Road facilities. For

**Alvin liked working with our Rabbis and our Executive Boards, was influential with our assistant rabbis and was a person who always made time for people, ensuring that they felt welcome and embraced by NSCI.**

his last seventeen years with us, he was our Executive Director and knew well every facet of our building at Sheridan Road while he concurrently managed the complexities of our growing congregation. He was instrumental in convincing the owners of the Lady Esther Estate, on which our synagogue at 1185 Sheridan Road is built, to relinquish the property to us, and also in expediting the sale of the property at 840 Vernon Avenue. He enjoyed working with our renowned architect, Minoru Yamasaki.

In a conversation with Alvin's wife of 50 years, Barbara, herself an NSCI alum (she was confirmed at NSCI in 1958), it was clear that Alvin always had a special place in his heart for NSCI. He was described by her as a fair and just person, for whom Judaism, Jewish education and a sense of community were central. He was sensitive to balancing the needs of the organization for which he worked with the needs of the individuals who made it all work. One of his goals was to nurture and identify volunteer leadership and he mentored programs to help meet the needs of congregations. Alvin liked working with our Rabbis and our Executive Boards, was influential with our assistant rabbis and was a person who always made time for people, ensuring that they felt welcome and embraced by NSCI. He was skilled in smoothing and facilitating resolutions to the sometimes-prickly disagreements among congregants or between temple members and the clergy. Along with his many congregational responsibilities, he also found time to serve on the Executive Committee of the National Association of Temple Administrators and was the Chairman of that association's Temple Administrative Assistance Program, which provided administrative



and management advice to those congregations without administrators.

Alvin Platt, though, was valued for more than just his administrative talents, creative ideas and practical contributions to the boards and committees of which he was a part. He loved to sing, was a poet, and wrote songs, sonnets, stories, and plays. When there was a NSCI staff birthday, he wrote unique songs for the celebrant to familiar music "You Are My Sunshine" and "I've Been Working on the Railroad." When President Kennedy was killed, there was a Teacher's Bulletin for the date November 30–December 1, 1963 written by Al that led with a poem Al wrote entitled "Eternal Flame."

It was his warm personal relationships though, that those of us who knew him remember. He brought friendliness and a "can-do" spirit to students and adults alike and helped build the atmosphere of a welcoming community at NSCI which we enjoy today. We extend our fond thoughts to Barbara and to the 5 children of their blended families and feel honored to have had Alvin Platt as an integral part of NSCI's legacy. ■

# September 2021 ▪ Elul 5781/Tishrei 5782

S	M	T	W	T	F	S
			1	2	3	4
5	6	7	8	9	10	11
12	13	14	15	16	17	18
19	20	21	22	23	24	25
	Erev Sukkot	<b>Sukkot</b> <b>Office Closed - 1st Day of Sukkot</b> <b>9:30 am</b> Sukkot Morning Experience ♦ <b>7:00 pm</b> FA Meeting *	<b>Sukkot</b> <b>11:30 am</b> WNSCI Sisters in the Sukkah * <b>6:00 pm</b> AA Meeting *	<b>Sukkot</b> <b>1:00 pm</b> Mah Jongg *	<b>Sukkot</b> <b>6:15 pm</b> Kabbalat Shabbat Sukkot Service *♦♦	<b>Sukkot</b> <b>9:00 am</b> Torah Study/Discussion ♦ <b>10:15 am</b> Shabbat Morning Worship *♦♦
26	27	28	29	30		
<b>Sukkot</b> <b>11:00 am</b> Fall Fest: Celebrate Sukkot & Simchat Torah w/ Food Trucks and more *	<b>Sukkot</b> <b>10:00 am</b> Adult Mitzvah Corps Sorting Event for Cradles to Crayons *	<b>Shmini Atzeret</b> <b>Office Closed Shmini Atzeret &amp; Simchat Torah</b> <b>9:30 am</b> Shmini Atzeret Healing and Yizkor/Memorial Service in Perlman Sanctuary *♦♦♦ <b>7:00 pm</b> FA Meeting ♦	<b>1:00 pm</b> Senior Connection ♦ <b>6:00 pm</b> AA Meeting *	<b>1:00 pm</b> Mah Jongg *		

\* in person at NSCI ♦ on Zoom ■ on Streamspot ● on Facebook

# October 2021 ■ Tishrei/Cheshvan 5782

S	M	T	W	T	F	S
					<b>1</b> <b>6:15 pm</b> Kabbalat Shabbat Service * * *	<b>2</b> <b>9:00 am</b> Torah Study/ Discussion ♦ <b>10:15 am</b> Shabbat Morning Worship * * *
<b>3</b> <b>11:00 am</b> Feed the Homeless *	<b>4</b> <b>1:00 pm</b> Study the Talmud's "Greatest Hits" with Rabbi Geffen *	<b>5</b> <b>10:00 am</b> Bridge * <b>7:00 pm</b> FA Meeting *	<b>6</b> <b>10:00 am</b> Wise Aging * <b>1:00 pm</b> Cookies from the Heart Baking * <b>6:00 pm</b> AA Meeting *	<b>7</b> <b>1:00 pm</b> Mah Jongg *	<b>8</b> <b>6:15 pm</b> Kabbalat Shabbat Service * * * <b>8:00 pm</b> Post-Kabbalat Shabbat Chicago Bassoon Trio Concert in Perlman Sanctuary *	<b>9</b> <b>9:00 am</b> Torah Study/ Discussion ♦ <b>10:15 am</b> Shabbat Morning Worship * * *
<b>10</b> <b>9:00 am</b> WNSCI Board Meeting *	<b>11</b> <b>1:00 pm</b> Study the Talmud's "Greatest Hits" with Rabbi Geffen *	<b>12</b> <b>10:00 am</b> Bridge * <b>7:00 pm</b> FA Meeting *	<b>13</b> <b>10:00 am</b> Wise Aging * <b>6:00 pm</b> AA Meeting * <b>6:00 pm</b> WNSCI Dinner Out *	<b>14</b> <b>1:00 pm</b> Mah Jongg *	<b>15</b> <b>6:15 pm</b> Kabbalat Shabbat Service * * *	<b>16</b> <b>9:00 am</b> Torah Study/ Discussion ♦ <b>10:15 am</b> Shabbat Morning Worship * * *
<b>17</b>	<b>18</b> <b>1:00 pm</b> Study the Talmud's "Greatest Hits" with Rabbi Geffen *	<b>19</b> <b>10:00 am</b> Bridge * <b>7:00 pm</b> FA Meeting *	<b>20</b> <b>10:00 am</b> Wise Aging * <b>6:00 pm</b> AA Meeting *	<b>21</b> <b>1:00 pm</b> Mah Jongg *	<b>22</b> <b>6:15 pm</b> Kabbalat Shabbat Service * * *	<b>23</b> <b>9:00 am</b> Torah Study/ Discussion ♦ <b>10:15 am</b> Shabbat Morning Worship * * *
<b>24</b>	<b>25</b> <b>1:00 pm</b> Study the Talmud's "Greatest Hits" with Rabbi Geffen *	<b>26</b> <b>10:00 am</b> Bridge * <b>10:30 am</b> Hinei Mah Tov: Israeli & American Jews' Views of Each Other ♦ <b>7:00 pm</b> FA Meeting *	<b>27</b> <b>10:00 am</b> Wise Aging * <b>4:00 pm</b> Beth Emet Soup Kitchen * <b>6:00 pm</b> AA Meeting * <b>7:30 pm</b> Hinei Mah Tov: Israeli & American Jews' Views of Each Other ♦	<b>28</b> <b>1:00 pm</b> Mah Jongg *	<b>29</b> <b>6:15 pm</b> Kabbalat Shabbat Service * * *	<b>30</b> <b>9:00 am</b> Torah Study/ Discussion ♦ <b>10:15 am</b> Shabbat Morning Worship * * *
<b>31</b> <b>11:00 am</b> Feed the Homeless *						

\* in person at NSCI ♦ on Zoom \* on Streamspot \* on Facebook



**NORTH SHORE  
CONGREGATION  
ISRAEL**

1185 SHERIDAN ROAD  
GLENCOE, ILLINOIS 60022

Admin. Office: 847.835.0724  
School Office: 847.835.7258

[NSCI.org](http://NSCI.org)

---

**DATED MATERIAL.  
DO NOT DELAY.  
CHANGE SERVICE REQUESTED.**

---

*The Bulletin* (USPS #072-800)  
is published bimonthly by  
North Shore Congregation Israel,  
1185 Sheridan Road,  
Glencoe, IL 60022.  
Periodicals Postage paid at Glencoe, IL  
and additional mailing offices.

POSTMASTER:  
Please send address changes to  
*The Bulletin*, 1185 Sheridan Road,  
Glencoe, IL 60022.

## IN CASE OF AN AFTER- HOURS EMERGENCY—

death of a loved one, unexpected hospitalization or accident—please call the synagogue office at 847.835.0724 and follow the prompts for an emergency. One of our staff will call you back as soon as possible.

## BIKUR CHOLIM (VISITING THE SICK)

In an effort to fulfill the mitzvah, Bikur Cholim (visiting the sick), our rabbis and cantor visit members who are hospitalized in the metropolitan area. This has become increasingly difficult, as hospitals cannot contact synagogues or churches when members are hospitalized.

Please feel free to call the synagogue office at 847.835.0724 to advise the rabbis and cantor when you, a relative or a friend is hospitalized in any hospital in the metropolitan area. In doing so, you will become a partner in the mitzvah of Bikur Cholim.



# Fall Fest

## Celebrate Sukkot & Simchat Torah with Food Trucks & Fun!

**SUNDAY, SEPTEMBER 26, 11:00 AM–12:30 PM**

Celebrate the end of Sukkot and Simchat Torah with lunch for purchase from local food trucks, free Kona Ice, and enjoy holiday-themed activities for all ages and stages! Activities include mitzvah projects, shaking the lulav, a chance to look up close inside a Torah scroll, photo booth and much more!

Please RSVP at [nsci.org/fallfest](http://nsci.org/fallfest). Please also use this opportunity to contribute to our HHD collections for The Ark and Cradles to Crayons (details on page 12).