

NORTH SHORE  
CONGREGATION  
ISRAEL

# The Bulletin

Vol. 91 No. 8

November/December 2021 ■ Cheshvan/Kislev/Tevet 5782

*The Bulletin is supported by an endowment established by Jane R. Perlman.*

## A Time of Challenge and Revelation

BY RABBI WENDI GEFFEN page 3

"The world in which we live is one where everything is changing, faster than it ever has before. This was true before the pandemic, but proves even more so now."

## SENIOR STAFF

**Wendi Geffen**  
*Rabbi*

**Lisa S. Greene**  
*Rabbi, The Susan C. Longo  
Associate Rabbi Chair*

**Ryan E. Daniels**  
*Rabbi*

**David M. Goldstein**  
*Cantor*

**Todd Braman**  
*Executive Director*

**Dr. Roberta Goodman, RJE**  
*Education Director*

**Joel Miller**  
*Director of Operations*

**Glen Fullmer**  
*Director of Communications*

## PRESIDENTS

**Jeff Echt**  
*President*

**David Cohen**  
*Brotherhood Co-President*

**David Rothschild**  
*Brotherhood Co-President*

**Frances Morof**  
*Women of NSCI Co-President*

**Mimi Horowitz**  
*Women of NSCI Co-President*

## WHAT'S INSIDE...

A Time of Challenge and Revelation .....	3, 6
Imagining the Possible .....	3
Our Goal: A Safe, Modern, Flexible Synagogue Building and Grounds Equipped for the 21st Century ....	4-5
Mazel Tov! .....	7
Welcome New Congregants .....	7
We Remember .....	8

## PROGRAMS

Support .....	9
Youth & Family Community .....	10
Adult Learning & Programs .....	11
Music .....	11
Tikkun Olam .....	12
Women of NSCI .....	12
The Ruthie & Bill Katz Archives .....	13
NSCI Calendar .....	14-15

## A Time of Challenge and Revelation



BY RABBI WENDI GEFFEN

**WHEN THE PANDEMIC** hit in March 2020, we made the difficult decision to put our *Imagine the Possible* campaign on hold. With

a shifting tide that no one had navigated previously, inspired imagination felt misplaced. Instead of looking toward the future, we kept our eyes on what was immediately in front of us, responding to each pandemic wave as it came, with the immediate well-being, physical, no less spiritual, of our community as our North Star. In doing so, we believed we were best positioned to navigate the long storm we were forced to face.

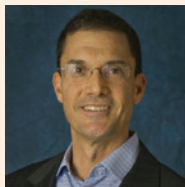
In addition to their challenge, surprisingly, the past 20 months have also proven a profound time of revelation. Very early on in our navigation, we discovered that the

waters' currents were not solely treacherous. Rather, they would birth new opportunities for us and reveal hidden treasures and new pathways as well.

Consider the most recent High Holy Days. We had learned from the previous year the importance of offering virtual worship that could be experienced as both high quality and also personally engaging. But this year, with the possibility of returning to in-person gathering, we were yet aware of the discomfort many felt indoors. We chose to embrace this challenge as an opportunity to take advantage of the totality of our campus, and we offered Rosh Hashanah and Yom Kippur experiences on our expansive South Lawn, something we had never done before. These experiences turned out not only to be the most well-attended, but also some of the most exciting and engaging moments we have shared together. Children were able to run, jump

Continued on page 6

## Imagining the Possible



BY JEFF ECHT, PRESIDENT

**FROM THE FIRST TIME** I heard of NSCI's campaign—*Imagine the Possible*—I was very excited.

The word "Imagine" piqued my interest and enthusiasm.

Initially, "Imagine," one of my favorite songs, came to mind. If you like the song as well, you have plenty of company. In 1999, "Imagine" was named one of the top 100 songs of the 20th century. The lyrics contemplate creating a better world through profound changes to our lives, our communities and our institutions. Through the *Imagine the Possible* campaign, we have a chance to do this for our NSCI community.

To imagine pushes me out of my comfort zone of tangible reality and conjures positive thoughts of reaching toward aspirational goals. The campaign's title reflects the boundless potential of our NSCI community. I would like to offer thoughts on the campaign's objective target and share a subjective observation on this goal.

### The Objective

Our stated goal is to raise \$12,500,000. To date, many generous congregants have donated or pledged over \$10,000,000 to the campaign. The

value of the vast and broad community commitment to this campaign exceeds the quantity of dollars collected. I continue to imagine that nearly all our congregants will contribute in some way. The breadth of participation is also highly sought after and valued. Each gift is cherished by both the recipient (NSCI and the NSCI community) and the donor. I can imagine the growing pride within our NSCI community as we learn that 80%, 90% or even 100% of all congregants contributed to the congregation's future.

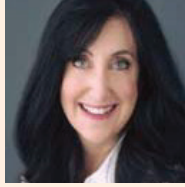
### The Subjective

Leaders in our community founded NSCI over 100 years ago. Scores of important decisions have been made and priorities established to provide current NSCI congregants the opportunity to worship in a beautiful and world-renowned synagogue, to learn from a peerless group of clergy and to celebrate life-cycle events with friends and family. I cannot imagine NSCI not being here for us. Further, I cannot imagine and will not entertain failing to fulfill our responsibility to improve and maintain NSCI physically and financially both to honor those who came before us and to care for those future generations that will follow us. Through our renewed commitment to NSCI and to each other, the things we imagine can truly become a new reality. ■

# IMAGINE *the* POSSIBLE

IMAGINE.NSCI.ORG

## Our Goal: A Safe, Modern, Flexible Synagogue Building and Grounds Equipped for the 21st Century



BY MARILYN PERLMAN,  
CAMPAIGN CHAIR

**FOUR YEARS AGO**, with the NSCI Centennial approaching in 2020, we embarked on an ambitious journey to plan for the best

future for NSCI. The *Imagine the Possible* campaign was thoughtfully designed and launched in 2019. Even with the pause in 2020 due to the onset of the pandemic, we have raised more than \$10,000,000 toward our total goal of \$12,500,000.

Now, we are excited to relaunch the campaign, recalibrated to prioritize the synagogue's most imperative needs.

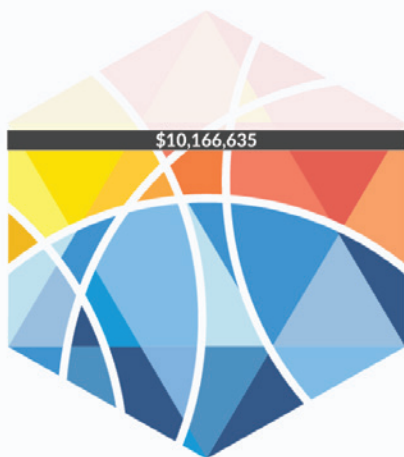
Generous members of our congregation have issued a **Challenge Grant to match all new and increased gifts up to \$500,000.**

Generous members of our congregation have issued a **Challenge Grant to match all new and increased gifts up to \$500,000.** We are deeply grateful to those who have made the extraordinary commitment to offer this match: **Anonymous, Julie and Jeff Echt, Lisa and Eddy Eisenberg, Shari and Jim Field, Melissa and Xuong Nguyen, Harriette and Ted Perlman, Barbara and Victor Weisskopf.**

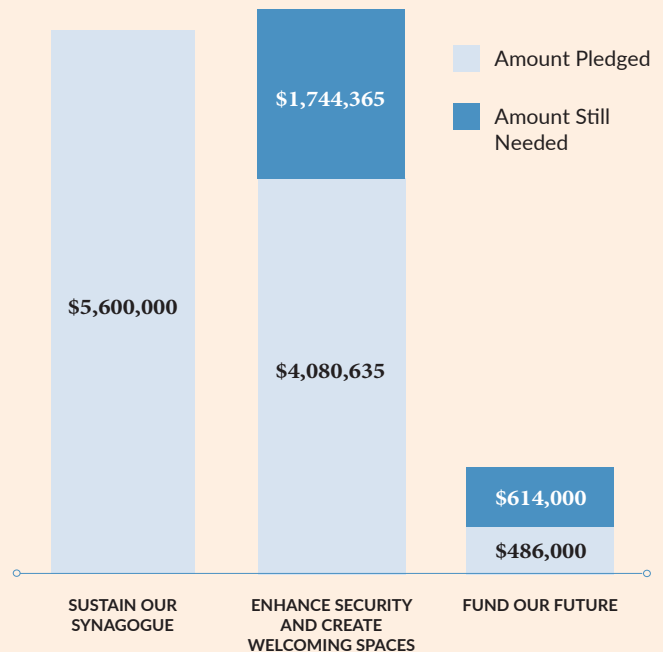
**YOUR Support is Essential.**  
With this match, you can double your impact.

We must raise the full \$12.5 million to achieve our goals. Each contribution is an imperative investment in the campaign's ultimate success. We are 80% toward our goal with the generosity and dedication to NSCI of just 175 donors in our large congregation.

**TOTAL CAMPAIGN GOAL: \$12,500,000**



**TOTAL CAMPAIGN DONORS: 175 PLEDGES**



Updated October 29, 2021

# IMAGINE *the* POSSIBLE

IMAGINE.NSCI.ORG

The campaign's overarching goal is to create a safe space where we can connect with one another in kinship, learning, spirituality and belonging in a way that is meaningful to everyone — children, young adults, families and elders. The top priorities of the campaign are:

## Enhance Safety and Security

Safety is the top priority. We cannot attend to our higher aspirations for fellowship and spirituality when feeling vulnerable. To this end, we will:

- **Fortify front entry security** by installing monitoring procedures, equipment and technologies.
- **Reorganize and renovate administrative offices** so they are secure and foster collaboration.

## Create Fluid, Flexible and Welcoming Spaces

- **Transform Frank Memorial Hall** into a comfortable and convivial gathering space with abundant seating and technology to facilitate meeting and connection.
- **Modernize Rebecca K. Crown Hall** and provide access to the magnificent grounds with a new outdoor patio to accommodate an array of events.

## Fund our Future

- **Build a sufficient endowment** for continuous operating revenue and a forward-looking synagogue poised to meet ever-changing needs and realities.
- **Create a Meet the Moment Fund** to enable our clergy, staff and teachers to develop innovative curriculum and educational programs to respond to pressing, real-time events (Fully funded).

## Sustain our Synagogue (Fully funded)

- Thanks to early support, we have fully funded our first priority, **Sustain our Synagogue**, focused on eliminating debt, addressing immediate repairs and creating a substantial building reserve.

## Be part of something greater than ourselves.

Gifts to the *Imagine the Possible* campaign are expressions of gratitude to those who came before us as well as an investment in the future of our children and their children.

## Please join us!

Visit [imagine.nsci.org](https://imagine.nsci.org) or contact Todd Braman, Executive Director, at [toddb@nsci.org](mailto:toddb@nsci.org) or Marilyn Perlman, Campaign Chair, at [marilyn@nsci.org](mailto:marilyn@nsci.org) for more information about the campaign and ways to pledge, donate or volunteer.

## LEARN MORE AT ONE OF THESE UPCOMING ZOOM EVENTS

MONDAY, JANUARY 10

7:00 PM

TUESDAY, JANUARY 11

12:00 PM

Register at [imagine.nsci.org](https://imagine.nsci.org).

## Jillian, Brian, Jordana and Kayla Segel

**WHEN WE MOVED** to the suburbs over eight years ago, we started our oldest in preschool at NSCI. What we found was a place where the staff and clergy prioritize inclusivity, education and flexibility. We've met families who are so friendly and incredibly welcoming. We support the *Imagine the Possible* campaign so our children (8 and 10) will have a place to grow where they always feel comfortable and welcome. We support the campaign so we can keep the integrity of NSCI's beautiful building while updating it to support the congregation's modern needs.



# IMAGINE *the* POSSIBLE

IMAGINE.NSCI.ORG

Continued from page 3

and dance. Parents, grandparents and other family members were able to be close to one another without fear. All expressed how spiritually “moved” they were in a most beautiful “sanctuary” as we listened to birds sing, wind rustle through the leaves of the towering trees and the waves of Lake Michigan lap the shoreline. In my two decades at NSCI, we had never before thought to utilize that space for such a purpose. What an incredible gift with which to be presented.

For all the change the pandemic has brought, our most salient values and truths endure. In many ways, the pandemic has refreshed our memories. Community matters. The wisdom of Judaism matters. The synagogue matters. In times of challenge, in times of blessing and every time in between, this place matters. In a world that will do its very best to convince us that nothing matters but to focus on ourselves, that happiness is one click away, this synagogue comes to remind us that we are not alone, that our existence is imbued with meaning and that, ultimately, it is only by bringing our light to something bigger than ourselves that we can come to find true fulfillment and achieve our highest purpose.

**The world in which we live is one where everything is changing, faster than it ever has before. This was true before the pandemic, but proves even more so now.**

While we may not know exactly how people will connect, worship, learn and gather in the future, we do know that we will continue to connect, worship, learn and gather, and we want to be prepared for whatever unfolds. More than ever in memory, a sense of place is vital. To provide a safe spiritual home, and to prepare for growth and

change which may not always be predictable, North Shore Congregation Israel requires a modern, flexible synagogue campus, truly equipped for the 21st century.

All of this makes the relaunch of our *Imagine the Possible* campaign more important than ever. We've seen the firsthand impact of the campaign's success already, as early gifts to our first goal on sustaining the synagogue enabled us to enter into the pandemic on strong financial ground, with no debt and a large facility reserve. With our position steadied, we now find ourselves in a place to create a transformative ground for our future.

I hope you will join me and my family, along with so many others, in supporting the *Imagine the Possible* campaign. As a community that is substantive and consequential, NSCI always has been and always will be a place where everyone is invited. As a family that recognizes the divine spark in each and every person, together we learn, interpret and demonstrate the impact of Judaism, in our own lives, the lives of others and our world. Brokenhearted for the world's pain and suffering, so too are we openhearted and hopeful for the potential of its healing. Whether you and your family have been here for generations or you are just starting to establish your roots and grow your lives with us, your imagining what's possible with us enables us to continue to traverse the seas of our lives and those yet to be, establishing our enduring and ongoing legacy, worthy of the highest Jewish ideals, truly from generation to generation. ■

## Shari and Jim Field

**BEING A MEMBER** of NSCI is truly a meaningful, fulfilling experience for us and our children. NSCI has provided warmth and direction to our entire family for over 50 years.

Our family has made a commitment to NSCI to support the *Imagine the Possible* campaign because NSCI truly matters to us. The warmth and sense of community we feel at the temple have provided a lifetime of significance. We want to preserve NSCI as a self-sufficient entity for generations to come. After the campaign was put on hold and restarted, we felt compelled to increase our gift because the pandemic showed us how important it was to have NSCI as an integral part of our lives.



# Mazel Tov!

## WELCOME!



**Celia Babe Aronson**  
**BORN ON SEPTEMBER 17, 2021**  
 Child of Jamie O'Hara Aronson & Max Aronson  
 Grandchild of Lori & Steve O'Hara, Laura Aronson, and Bob Aronson  
 Great grandchild of Sydelle Patinkin, Carolyn & Alan Aronson

**Hayes Daniel Klein**  
**BORN ON SEPTEMBER 17, 2021**  
 Child of Alex & David Klein  
 Sibling of Parker  
 Grandchild of Kathy & Jim Klein  
 Great grandchild of Inge Rothschild



**Addison Dana Caplan**  
**BORN ON SEPTEMBER 23, 2021**  
 Child of Amy & Brett Caplan  
 Grandchild of Deni & Mickey Caplan and Debbie & Glenn Nadell  
 Great grandchild of Ronald Boorstein and Fred Caplan



**Rory Arthur Fish**  
**BORN ON SEPTEMBER 26, 2021**  
 Child of Julie & Derek Fish  
 Grandchild of Bonnie & Peter Flanzer and Susan & Austin Fish

**Ezra Benjamin Tross**  
**BORN ON SEPTEMBER 29, 2021**  
 Child of Chole & Adam Tross  
 Grandchild of Beth & Nate Tross and Esta & Andrew Goodman  
 Great grandchild of Jeanne Levitt and Shirley Tross

## NEWLYWEDS

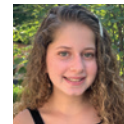


**Sammie Karson & Jessie Allen**  
**MARRIED ON SEPTEMBER 21, 2021**  
**Blair Zimelis & Lev Naginsky**  
**MARRIED ON OCTOBER 16, 2021**  
**Lauren Chilow & Adam Pines**  
**MARRIED ON OCTOBER 23, 2021**

## B'NEI MITZVAH



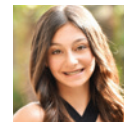
**Julia Eisenberg**  
**NOVEMBER 5**



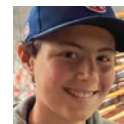
**Alexa Kunreuther**  
**NOVEMBER 6**



**Maison Zelwin**  
**NOVEMBER 13**



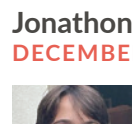
**Sophie Kiferbaum**  
**NOVEMBER 18**



**Zach Drescher**  
**NOVEMBER 20**



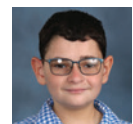
**Shayne Lederer**  
**DECEMBER 4**



**Jonathon Adess**  
**DECEMBER 11**



**Jordan Stein**  
**DECEMBER 11**



**Benjy Orlinsky**  
**DECEMBER 26**



**Lindsey Deshur**  
**DECEMBER 30**

# Welcome New Congregants

## THE ROSS FAMILY



**Alison, Matthew, Jack, and Zoey**  
 Highland Park

*What are you and your children looking forward to or interested in getting involved in at NSCI?* Matthew grew up going to a conservative temple while Alison went to a reform temple. We want to make sure our children learn about their heritage. We loved being part of our temple community growing up.

*Anything you LOVE about North Shore Congregation Israel already!* We had a blast at the food truck event after Sunday school!

*Anything else about yourself/family that you want to share?* Looking forward to getting involved wherever we can!

Please visit [nsci.org/welcome-new-congregants](https://nsci.org/welcome-new-congregants) to learn more about the families included in this Bulletin.

Looking to help welcome new congregants? Contact Susan Ellenby at [susane@nsci.org](mailto:susane@nsci.org) or 847.835.0724.

# We Remember

## THE CONGREGATION EXTENDS ITS HEARTFELT CONDOLENCES TO THE FAMILIES OF:

### Lois Berman

Mother of Marty (Sol) Berman  
and Liza (Joel) Brown  
Grandmother of Cole, Ava, Zach, Evan,  
and Harris

### Beatrice Colburn

Mother of Lynn (Mark) Shapiro  
Grandmother of Andrew and Amy

### Florence Goodman

Mother of Joan (David) Bergman  
Grandmother of Jacob, Hannah, and Daniel

### Dr. Alan Klein and Dee Dee Klein

Parents of Dr. Gary (Dr. Nancy),  
Dr. Kenneth (Jeanne) Klein, and  
Steven (Amy) Klein  
Grandparents of Julie (Dr. Spencer)  
Schneider, Dr. Jamie (Omer) Bar-Ness,  
Gregory Klein (fiancé Lori Resnik),  
Lauren Klein, and Alexander Klein  
Great Grandparents of Adeline, Leona,  
and Ziv

### Judy Kubert

Mother of David (Peggy) Kubert, the late  
Anne z"l (Richard) Nathan, and the late  
Charlie z"l (Karen Muchin) Kubert  
Grandmother of Joseph (Elizabeth), Kate,  
Jonathan, Andrew, Thomas, William,  
Jessica, and Abigail

### Steven Lewis

Husband of Maureen  
Father of Jeffrey (Lisa) Lewis, Abbie Miller,  
Catherine (Trevor) Tompkins, and  
Hillary Lewis (James Yonan, fiancé)  
Stepfather of Jason (Daniella) Schwartz  
and Amanda (Peter) Stern  
Grandfather of Lillian, Logan, Jesse,  
Kadence, Jarod, Peyton, Shane, Isabella,  
and Theodore  
Brother of Ken (Susan) Lewis and  
Michael (Yelena) Lewis

### J. Clifford Moos

Father of Jane Moos Cohen (David Cohen),  
Emily Moos, and Joseph Moos  
(Jean Saunders)  
Grandfather of Jordan, Zak, and Marley

### Aaron Rubin

Brother of Mara (Richard) Bernstein  
Uncle of Lev, Lily, and Eli Rothschild

### Janette Weiner

Former spouse and dear friend of  
Matthew Arbit  
Mother of Alexander, Toby Anna,  
and the late Moses & Miriam, z"l

**Are you prepared?** Pre-arranging burial is part of sensible estate planning. As an NSCI congregant, you are entitled to purchase from a selection of burial spaces at Shalom Memorial Park at a substantial discount. If you are interested in planning ahead or learning more about the congregational plots, please contact Micah Singerman at 847.255.3520.



## WOMEN OF NSCI'S

# Judaica Gift Shop

## AFTER THE HIGH HOLIDAYS, IT'S TIME TO START THINKING ABOUT...CHANUKAH!

The first candle will be lit this year on Sunday, November 28 (Thanksgiving weekend). Browse the Gift Shop for wonderful Chanukah merchandise, and gifts for all other occasions. We have books, toys, matchboxes, dreidels, hostess gifts, candles and, of course, menorahs.

**GIFT SHOP HOURS:** MONDAY, TUESDAY, WEDNESDAY & FRIDAY  
10:00 AM - 1:00 PM, SUNDAY, 9:00 AM - 12:00 PM (WHEN RELIGIOUS SCHOOL  
IS IN SESSION) AND BY APPOINTMENT

As committed volunteers, we are proud that all profits support the important work of WNSCI and NSCI. Contact us at 847.835.4009 or [giftshopnsoci@gmail.com](mailto:giftshopnsoci@gmail.com). You can also check out our NSCI Gift Shop page on the NSCI website.

(Pictured: New! Michael Aram Tree of Life Children's Menorah)

# Support

As a caring community, we strive to meet the growing needs of our NSCI family.  
Visit [www.nsci.org/support](http://www.nsci.org/support) for a full list of resources available to you.

## HANDS OF CHESED, NSCI'S CARING COMMUNITY



Chesed is Hebrew for kindness. Hands of Chesed is a group of NSCI volunteers who want to help you during a difficult time. If

you're dealing with illness, divorce, mourning or other challenges, let us drop off dinner and the warmth of our NSCI community, contactless!

*If we can help you, or if you want to join our team to spread kindness, please tell Rabbi Greene, [rabbigreene@nsci.org](mailto:rabbigreene@nsci.org). Hands of Chesed is led by Leslie Rosen & Amy Kaufman.*

## NAVIGATING THE VACCINE?

NSCI is a Lake County Community Health Ambassador. Looking for basic information on vaccine registration portals? Check out our website for up-to-date information in your area.

*Please visit [nsci.org/covid19](http://nsci.org/covid19).*

## FINANCIAL SUPPORT

Are you in need of emergency financial support due to the COVID-19 pandemic? Generous contributions from our congregants and JUF have made it possible for NSCI to provide one-time, confidential micro-grants to congregants who find themselves in need of emergency funds for housing issues, medical support and food. In addition, we can help congregants find longer-term support for ongoing, systemic challenges.

*To apply for a confidential grant, please fill out the form at [www.nsci.org/support](http://www.nsci.org/support) and one of our clergy or executive director will get back to you as soon as possible.*

## FREE COUNSELING SERVICES FOR NSCI CONGREGANTS

NSCI is partnering with Jewish Child and Family Services in the coming year. Elizabeth Ury, LNHA and JCFS Chicago Director of Jewish Community Engagement will be available to work with individuals who are looking for resources to help with life events such as divorce, aging issues, mental health and parenting.

*Please email [ElizabethUry@JCFS.org](mailto:ElizabethUry@JCFS.org). This service is free to NSCI members. Additionally, you can call 855-ASK-JCFS (855-275-5237) or email [ask@jcfs.org](mailto:ask@jcfs.org) to access their other available resources including online grief support groups, counseling, Response Center programs.*

## IF YOU'RE IN NEED OF SUPPORT, EMOTIONAL OR TANGIBLE

Please visit our website [www.nsci.org/support](http://www.nsci.org/support) to learn about the various ways that we can assist you or your family and to request support. Your confidential information will go to the NSCI Clergy and we will follow up when appropriate.

## ADDICTION AND RECOVERY SUPPORT GROUPS

As a caring community, we strive to meet the growing needs of our NSCI Family.

*Please visit our website for information on how to access the following support groups [www.nsci.org/support](http://www.nsci.org/support).*

- Alcoholics Anonymous Virtual and In-Person Meetings
- Al-Anon Electronic Meetings
- Alateen Chat Meetings
- Families Anonymous Virtual and In-Person Meetings
- JACS (Jewish Alcoholics, Chemically dependent, and Significant others) a peer-led support group for Jews in addiction recovery, offering space for all Jews in addiction recovery.

## ALCOHOLICS ANONYMOUS MEETINGS

### WEDNESDAYS

6:00-7:00 PM AT NSCI AND ON ZOOM

*For information on Alcoholics Anonymous (AA) meetings, contact Mark at 847.738.1919 or email [mopeters21@gmail.com](mailto:mopeters21@gmail.com).*

## FAMILIES ANONYMOUS MEETINGS

### TUESDAYS

7:00-8:30PM AT NSCI AND ON ZOOM

For family members impacted by a loved one's addiction.

*For information on Families Anonymous (FA) meetings, contact Margot at 847.738.0306 or email [mkpeters81@aol.com](mailto:mkpeters81@aol.com).*

**Did you know we have an archive of conversations on our Hub of Support page on our website?**

*Visit [nsci.org/support](http://nsci.org/support) to find conversations about:*

- Balancing caring for elder family and self care
- Parenting during a pandemic
- Healthcare professionals on the frontlines
- NSCI/JUF communal resources for support to our congregants during the COVID-19

## Tying Together Our Biggest Why With Our How and What

BY DR. ROBERTA GOODMAN

**IT'S DAY ONE** of your new position as Education Director at NSCI. What would you focus on? The list of possibilities is long: students, teachers, parents, curriculum, innovation, leadership, communication with all sorts of nuances for each of these and more. For me, from day one, I began work on motivation.

Why motivation? "You have to go to religious school because I went." "It will make your grandparents happy." "We want you to become b'nei mitzvah." "We want you to know something about your heritage which is important to us, your parents." Regardless of the best intentions, heartfelt commitments, or what parents might say or do, for the child it might seem like another activity, not necessarily one they chose, and it seems a lot like school.

How do educators think about motivation?

A classic way of thinking about motivation is in two categories: intrinsic and extrinsic. Here's a basic description found on an internet search:

**Intrinsic motivation** refers to behavior that is driven by internal rewards. In other words, the motivation to engage in a behavior arises from within the individual because it is naturally satisfying to you. This contrasts with **extrinsic motivation** which involves engaging in a behavior in order to earn external rewards or avoid punishment.

What kinds of intrinsic and extrinsic motivation can we tap?

Let's talk about extrinsic motivation first as it seems the more obvious one. Yes, we use little "carnival" prizes in classes to reward students for their progress in Hebrew, showing their Jewish knowledge, winning a competition. Beyond those prizes, students can earn time playing a favorite game like kahoot

or gaga, having a pizza party (pre-Covid reward), hanging out for a 10-minute socializing break, or going a little deeper, teaching another student and receiving praise for an accomplishment. For recognition, we take photos, post the "top ones" each week on Facebook, cover our bulletin boards with photos, and send some home.

While these extrinsic efforts should not be minimized, they have benefits for building community, informing parents of what we are doing, and connecting our students to Jewish life. They are not sufficient for reaching inside of our students and building up and upon students' intrinsic motivation.

Intrinsic motivation offers more hope for us as our extrinsic rewards are limited. How do you tap intrinsic motivation that is personal, compelling, longer lasting, yet seems elusive? The answer is contained in our new mission statement from work with Shifting the Paradigm:

We are a hands-on, experiential learning center tapping into children's and families' evolving interests, goals, talents and ways of learning in order to motivate and engage them and to achieve competence and confidence as they explore Jewish learning and living.

In my next Bulletin article, I will share the ways the Goodman Center for Jewish Education intentionally taps into intrinsic motivation. ■



### JEFFREY LASKY MEMORIAL ARTS WEEKEND

Thank you to our INCREDIBLE teens for participating in this year's Jeffrey Lasky Memorial Arts Weekend. We put together an awesome staged sketch comedy show based on the torah portion *Lech Lecha*! Thank you so much to the Lasky family for supporting our creativity!

### JOIN OUR 8TH-12TH GRADE CLASS! TOUGH JEWISH CONVERSATIONS: WRESTLING WITH TODAY'S REAL ISSUES

As Jews we are brought into difficult conversations. How do I love Israel and live with discomfort about things I see in the news? How do I respond to antisemitism in my everyday life? Why do I have to acknowledge my privilege, anyway? We face these questions in school, with friends and on Instagram, and we often don't know how to respond. In this class we will learn, argue and form our own answers so that next time these questions arise, we have something to say! Topics we'll cover include antisemitism, Israel, allyship and more!

Teachers: Rabbis Greene & Daniels and Mady Frischer, with the help of guest speakers and YOU! Yes, there will be opportunities for teen participants to lead class sessions too!

**Enrollment: \$250 or \$25/one session. Includes dinner at each class session. Email [jenniferm@nsci.org](mailto:jenniferm@nsci.org) to register!**

### IMPORTANT GOODMAN CENTER FOR JEWISH EDUCATION RELIGIOUS SCHOOL DATES

**SUNDAY, NOVEMBER 14:**  
Great Challah Bake  
(online)

**SUNDAY, DECEMBER 5:**  
Winter Fest Family  
Experience

## Adult Learning & Programs

### STUDY THE TALMUD'S "GREATEST HITS" WITH RABBI GEFFEN

**MONDAYS, OCTOBER 4–DECEMBER 13  
(NO CLASS NOVEMBER 22)  
1:00–2:00 PM IN CROWN HALL\***

Join Rabbi Geffen to study the Talmud. From October through December, we will study a selection of the most well-known or important sugiyot (Talmudic discussions) scattered throughout a variety of Talmudic tractates. No experience necessary. Texts will be provided.

*\*Masks are required inside the synagogue.*

### FIRST REFORM RABBI TO SERVE IN THE KNESSET GILAD KARIV ON AMERICAN JEWRY AND ISRAEL

**SUNDAY, NOVEMBER 7  
12:00 PM ON ZOOM**

Join Chicagoland Reform congregations in hearing from Rabbi Gilad Kariv, the first Reform rabbi to serve in the Knesset. Previously, Rabbi Kariv was the President and CEO of the Israel Movement for Reform and Progressive

Judaism (IMPJ), and served as the Associate Director of the Israel Religious Action Center. MK Kariv will speak about the current state of the relationship between American Jewry and Israel. His presentation will include time for Q/A.

**Register:** [nsci.org/form/american-jewry-and-israel](https://nsci.org/form/american-jewry-and-israel)

### THE SPIRITUALITY OF DISAGREEMENT: THE JEWISH MODEL FOR PRODUCTIVE CONFLICT

**TUESDAYS, NOVEMBER 9, 16, 23  
7:00–8:00 PM IN PERSON**

Join Rabbi Geffen in study and conversation around Judaism's unique approach to disagreement and conflict through its articulation of purposeful difference.

**Register:** [nsci.org/form/spirituality-of-disagreement.html](https://nsci.org/form/spirituality-of-disagreement.html)

### THE MINDFUL OR MINDLESS LIFE

**FRIDAYS, DECEMBER 3, 10, 17  
11:00 AM–12:00 PM ZOOM**

Join Rabbi Geffen in exploration of Jewish spiritual teachings that can strengthen our capacity to live with awareness, generosity and compassion. Class requirements: a listening ear, an open mind, and a discerning heart.

**Register:** [nsci.org/form/mindful-mindless-life-december-2021](https://nsci.org/form/mindful-mindless-life-december-2021)

### THE WAR OF RETURN BOOK DISCUSSION WITH DR. EINAT WILF

**SUNDAY, DECEMBER 5  
10:00 AM ON ZOOM**

Rabbi Greene will be in conversation with Dr. Einat Wilf on her groundbreaking book: *The War of Return: How Western Indulgence of the Palestinian Dream Has Obstructed the Path to Peace*, in which the authors argue that for the conflict between Israel and the Palestinians to end with peace, Palestinians must come to terms with the fact that there will be no "right of return." The book is widely available locally and online.

**Register:** [nsci.org/form/the-war-of-return-discussion.html](https://nsci.org/form/the-war-of-return-discussion.html)

## Music



The Chicago Bassoon Trio performed at NSCI in October in honor of Lilli Greenebaum's special birthday (1 year late!); Pictured from left: Susan Nigro, Lilli Greenebaum, Beth Heller, Jim Greenebaum and Lynette Pralle.

### THE THREE DAVIDS: SONGS OF LOVE & PRAISE

**SUNDAY, NOVEMBER 14  
3:30–5:00 PM IN PERLMAN  
SANCTUARY**

We are excited to host this concert featuring NSCI's Cantor David Goldstein along with Cantor David Margules, and David Schane, pianist as well as Paula Kosower, cello. The program will include songs of love and praise in Hebrew, English, French, and Italian. This free concert has been sponsored by the Elaine N. Sherman Fine Arts Fund. *Imagine the Possible* invites you to an encore performance and conversation with the artists immediately following the concert.

**Register:** [nsci.org/form/three-davids-concert](https://nsci.org/form/three-davids-concert)

### CASAVANT FRÈRES ORGAN CONCERT

**FRIDAY, DECEMBER 10  
8:00 PM IN THE LARGE SANCTUARY**  
Featuring NSCI's extraordinary Casavant

Frères Organ played by our organist Paul Vander Weele. A light supper will be provided to those who attend the Kabbalat Shabbat service which begins at 6:00 PM. This free concert is generously sponsored by Jim Stone and Madeleine & Harvey Plonsker.

**Register:** [nsci.org/form/organ-concert](https://nsci.org/form/organ-concert)

### ADULT LEARNING – MUSIC PROGRAMS

**ALTERNATING MONDAYS  
7:00–8:30 PM IN PERSON AT NSCI**

Do you enjoy singing or playing an instrument? The Cantor welcomes new members to Shir Chadash Adult Choir and Jewish Jammers.

*For more information, a list of rehearsal dates, or to register, please contact Sarah: [sarahd@nsci.org](mailto:sarahd@nsci.org).*

# Tikkun Olam

## BAKING COOKIES FOR FILL A HEART 4 KIDS

**WEDNESDAY, DECEMBER 1**  
1:00 PM

Join other adults on the first Wednesday of the month at NSCI to bake cookies for children who are experiencing homelessness or living in foster care settings.

Email Lois Davis at [cookies@nsci.org](mailto:cookies@nsci.org).

## JCFS HOLIDAY GIFT DRIVE

**UNTIL FRIDAY, NOVEMBER 19**

Participate in JCFS's annual Holiday Gift Drive, an opportunity to help make a child's wish become reality!

Sign up online before Friday, November 19 at [bit.ly/3mk7e3v](https://bit.ly/3mk7e3v)

## ANNUAL FAMILY TO FAMILY THANKSGIVING MITZVAH PROJECT

**SUNDAY, NOVEMBER 21**  
10:00 AM-1:00 PM

Provide a Thanksgiving meal for a student from Whittier Elementary School in Waukegan, IL and their family. You can choose to participate "in person" or "drop off" the requested items at NSCI.

RSVP to: [nsci.org/thanksgivingbaskets2021](https://nsci.org/thanksgivingbaskets2021)

## FAMILY WINTER FEST

**SUNDAY, DECEMBER 5**  
11:00 AM-12:30 PM

Celebrate Chanukah with lunch for purchase from Soul & Smoke and The Fat Shallot food trucks as well as donuts from Stan's (our treat!) and enjoy holiday-themed activities for all ages and stages. Activities include hands-on mitzvah projects, Chanukah crafts, photo booth and much more!

RSVP to: [nsci.org/winterfest](https://nsci.org/winterfest)

## FEED THE HOMELESS

**SUNDAY, DECEMBER 5**  
11:30 AM-2:00 PM

For nearly three decades NSCI's Feed the Homeless program has helped to feed

thousands of people around Chicago. Join us one Sunday a month to prepare 750 hot and brown-bag meals for food programs in Lake and Cook Counties.

RSVP to: [nsci.org/ftf](https://nsci.org/ftf)

## NEW WINTER COATS & GEAR COLLECTION FOR WAUKEGAN PUBLIC SCHOOLS

**UNTIL FRIDAY, DECEMBER 17**

Help keep students in Waukegan Community Unit School District 60 warm this winter by donating NEW winter coats, hats, scarves and gloves.

Please bring donations to NSCI's Administrative Lobby during regular business hours.

## ADULT MITZVAH CORPS

Join Adult Mitzvah Corps, where we have fun volunteering once a month during the week.

Email [nscimitzvahcorps@gmail.com](mailto:nscimitzvahcorps@gmail.com).

# Women of NSCI

To register for most events, visit [nsci.org/wnsi](https://nsci.org/wnsi). If the event is not listed, email us at [wnsci@nsci.org](mailto:wnsci@nsci.org).

## COFFEE & CONVERSATION WITH KINNERET KOHN: STITCHING TOGETHER STORIES

**WEDNESDAY, NOVEMBER 10**  
8:00-9:00 PM ON ZOOM

Join Kinneret Kohn, Associate Director for Students and Educators at the Art Institute of Chicago, in exploring Bisa Butler's unique approach to quilting together culture and identity in her piece *The Safety Patrol*.

## WNSCI GENERAL BOARD MEETING - OPEN TO ALL

**SUNDAY, NOVEMBER 14**  
9:00 AM IN THE NSCI FAMILY ROOM  
OR ON ZOOM

RSVP if you will be joining us in person\*, or if virtually, we will send you the zoom link.

\*Note: Masks are required inside the synagogue.

## SHABBAT SCHMOOZE

**FRIDAYS, NOVEMBER 19 &  
DECEMBER 17**  
5:00-5:30 PM ON ZOOM

Join us for a quick virtual get together prior to Shabbat services.

## CHANUKAH PROGRAM WITH LYNN SHAPIRO

**WEDNESDAY, DECEMBER 1**  
7:00-8:30 PM IN PERSON AT NSCI

Lynn Shapiro, artistic director of the Yiddish Arts Ensemble, brings puppets, masks and a few goofy goblins who hate Hanukkah to help her tell how NSCI played a pivotal role in her theatrical adaptation of Eric Kimmel's "Hershel and the Hanukkah Goblins," with the Maxwell Street Klezmer Band.

## JEWISH MUSEUM VIRTUAL TOUR: AFTERLIVES: RECOVERING THE LOST STORIES OF LOOTED ART

**WEDNESDAY, DECEMBER 15**  
7:00-8:00 PM ON ZOOM

This exhibition traces the fascinating timelines of individual objects as they passed through hands and sites before, during and after World War II, bringing forward their myriad stories.

## WNSCI MAH JONGG IS BACK!

**THURSDAYS**  
1:00-3:00 PM NSCI'S GATHERING  
PLACE

Join us in NSCI's Gathering Place for fun and friendly games of Mah Jongg. Beginners and the "just curious" are welcome. There's no betting allowed, just a voluntary contribution to our Tzedakah Box! Following current guidelines, we ask that you be vaccinated and wear a mask. No need to register.

# The Ruthie & Bill Katz Archives

## A Look Back at Our History: Rabbi Steven S. Mason

Senior Rabbi 1997–2015, Rabbi Emeritus 2015–present

BY MERLE A. BRANNER AND  
ELLEN (KATZ) BLOCK

*From a conversation with Rabbi Mason,  
July 9, 2021*

**IN 1996**, to follow our esteemed and scholarly Rabbi Bronstein, the NSCI search committee chose Rabbi Steven S. Mason from Buffalo, New York, for the prestigious position as our Senior Rabbi. No less an accomplished student of Torah, Jewish liturgy and Jewish history than his two immediate predecessors, Rabbi Mason brought to NSCI not only his love of learning but also a passion for music, his natural warmth and “punny” sense of humor and, one of his greatest assets, his energetic and lovely wife, Patty who expanded and enriched our temple life with her own expertise and style.

Rabbi Mason’s path to the rabbinate was quite different from Rabbi Siskin’s and Rabbi Bronstein’s. The eldest of three children, he was born on September 16, 1951, in Boston where his father, Edward, was a medical student at Tufts and his mother, Ina, was a social worker. His sister, Susan, was born just twelve and a half months later, and the family moved to Connecticut for his father’s medical residency. Edward became a psychiatrist and the family next moved to Worcester in central Massachusetts which is where Rabbi Mason grew up. His younger brother, Andrew, was born there in 1956.

Rabbi Mason’s childhood years were filled with the usual activities of a youngster raised in the suburbs. He attended public school, followed the Red Sox and the Celtics, worked part-time jobs, attended summer camp where he became intrigued with the guitar at the age of eleven, played varsity high school tennis and subsequently became

a summer camp counselor. The family belonged to Temple Emanuel, a Reform congregation, where he was Bar Mitzvah and, a few years later, confirmed. The synagogue’s approach to serious Jewish education gave him a good grasp of Jewish liturgy as transmitted by the Union Prayer Book. His parents’ involvement, particularly that of his mother, with the Jewish Community Center taught him the value of what he came to know as “peoplehood” which shaped his warm, compassionate and engaging nature.

Following high school graduation, Rabbi Mason attended Bates College in Lewiston, Maine, a small liberal arts school of 1100 students, only 40 to 45 of whom were Jewish. Many students at that time spent their junior year abroad and Rabbi Mason, who had become interested in studying religion as “part of the human experience,” decided to go to Hebrew University in Jerusalem for the 1971–72 academic year. There were no “Jewish studies” at Bates, and he wanted to include Judaism in terms of his own experiences as part of his broader enquiry of religion. He had no interest or intention of becoming a rabbi but chose that school because, from a practical standpoint, he could do most of his course work in English and, even more, because when he was fifteen, his family had taken a trip to Israel just prior to the Six-Day War in 1966 which had a significant impact on him. A visit to Yad Vashem on that trip was “eye-opening” and, in Rabbi Mason’s words, “changed the way I lived my Jewish life” resulting in greater Jewish consciousness and a concerted effort to learn more about Judaism.

At Hebrew University, Rabbi Mason was exposed to some of the great Jewish thinkers of the time, an opportunity he



says he certainly did not fully appreciate. He attended classes given by Mordecai Kaplan, educator, rabbi and, with his son-in-law Ira Einstein, the founder of Reconstructionism. Another lecturer was David Hartman, creator of the Shalom Hartman Institute which is dedicated to greater understanding among Jews of diverse affiliations in Israel and the Diaspora, and to encouraging a more pluralistic and tolerant Israeli society. Rivka Horwitz, a German born Israeli professor who did pioneering work on the prolific author, scholar, philosopher and political activist, Martin Buber, and on Franz Rosenzweig, the German-Jewish theologian and philosopher who collaborated with Martin Buber on a German translation of the Bible was also an instructor at the school. Rabbi Mason’s Torah study class was taught by yet another notable educator, Pinchas Peli, who, Rabbi Mason says, made the Bible clear and understandable and was well known for the weekly Torah portion column for the English language edition of the *Jerusalem Post*.

Returning to Bates for his senior year, Rabbi Mason finished his undergraduate studies, collaborating independently with a professor to delve deeper into the area of religious studies and Jewish religious thought. He received his diploma in 1973. ■

*For the full article go to [NSCI.org/archives](https://NSCI.org/archives).*

# November 2021 ■ Cheshvan/Kislev 5782

S	M	T	W	T	F	S
	1	2	3	4	5	6
7 12:00 pm Knesset Member Rabbi Gilad Kariv on American Jewry and Israel ♦	8 1:00 pm Study the Talmud's "Greatest Hits" with Rabbi Geffen * 7:00 pm Shir Chadash with Cantor Goldstein *	9 1:00 pm WNSCI Book Group 7:00 pm FA Meeting 7:00 pm The Spirituality of Disagreement: The Jewish Model for Productive Conflict with Rabbi Geffen *	10 1:00 pm WNSCI Coffee & Conversation ♦ 6:00 pm AA Meeting	11 1:00 pm WNSCI Mah Jongg Game	12 6:15 pm Kabbalat Shabbat Service *♦■	13 9:30 am Shabbat Morning Minyan *♦■
14 9:00 am WNSCI Board Meeting 3:30 pm The Three Davids: Songs of Love and Praise *■	15 1:00 pm Study the Talmud's "Greatest Hits" with Rabbi Geffen * 7:00 pm Jewish Jammers with Cantor Goldstein *	16 7:00 pm FA Meeting 7:00 pm The Spirituality of Disagreement: The Jewish Model for Productive Conflict with Rabbi Geffen *	17 1:00 pm Senior Connections ♦ 6:00 pm AA Meeting 8:00 pm Healing Service with Cantor Goldstein ■	18 1:00 pm WNSCI Mah Jongg Game	19 5:00 pm WNSCI Shabbat Schmooze ♦ 6:15 pm Kabbalat Shabbat Service *♦■	20 9:30 am Shabbat Morning Minyan *♦■
21 10:00 am Thanksgiving Baskets	22	23 7:00 pm FA Meeting 7:00 pm The Spirituality of Disagreement: The Jewish Model for Productive Conflict with Rabbi Geffen *	24 1:00 pm Building Closes for Thanksgiving Holiday	25 Building Closed for Thanksgiving Holiday	26 Office Closed for Thanksgiving Holiday 6:15 pm Kabbalat Shabbat Service *♦■	27 9:30 am Shabbat Morning Minyan *♦■
28 Chanukah 1st Candle	29 Chanukah 2nd Candle 1:00 pm Study the Talmud's "Greatest Hits" with Rabbi Geffen * 7:00 pm Shir Chadash with Cantor Goldstein *	30 Chanukah 3rd Candle 7:00 pm FA Meeting				

\* in person at NSCI ♦ on Zoom ■ on Streamspot ● on Facebook

# December 2021 ■ Kislev/Tevet 5782

S	M	T	W	T	F	S
			<b>1</b> <b>Chanukah 4th Candle</b> <b>1:00 pm</b> Cookies From the Heart <b>6:00 pm</b> AA Meeting <b>7:00 pm</b> WNSCI Chanukah Program with Lynn Shapiro <b>8:00 pm</b> Healing Service with Cantor Goldstein	<b>2</b> <b>Chanukah 5th Candle</b> <b>1:00 pm</b> WNSCI Mah Jongg Game	<b>3</b> <b>Chanukah 6th Candle</b> <b>11:00 am</b> The Mindful or Mindless Life with Rabbi Geffen <b>6:15 pm</b> Kabbalat Shabbat Chanukah Service with <i>Selah</i>	<b>4</b> <b>Chanukah 7th Candle</b> <b>9:30 am</b> Shabbat Morning Minyan
<b>5</b> <b>Chanukah 8th Candle</b> <b>10:00 am</b> <i>The War of Return</i> Book Discussion with Dr. Einat Wilf and Rabbi Greene <b>11:00 am</b> Family Winter Fest <b>11:30 am</b> Feed the Homeless	<b>6</b> <b>1:00 pm</b> Study the Talmud's "Greatest Hits" with Rabbi Geffen	<b>7</b> <b>7:00 pm</b> FA Meeting	<b>8</b> <b>6:00 pm</b> AA Meeting	<b>9</b> <b>1:00 pm</b> WNSCI Mah Jongg Game	<b>10</b> <b>11:00 am</b> The Mindful or Mindless Life with Rabbi Geffen <b>6:15 pm</b> Kabbalat Shabbat Service with Shir Chadash <b>8:00 pm</b> Post Kabbalat Shabbat Concert Casavant Frères Organ Concert	<b>11</b> <b>9:30 am</b> Shabbat Morning Minyan
<b>12</b>	<b>13</b> <b>1:00 pm</b> Study the Talmud's "Greatest Hits" with Rabbi Geffen	<b>14</b> <b>1:00 pm</b> WNSCI Book Group <b>7:00 pm</b> FA Meeting	<b>15</b> <b>1:00 pm</b> Senior Connections <b>6:00 pm</b> AA Meeting <b>7:00 pm</b> WNSCI Jewish Museum Virtual Tour: Afterlives: Recovering the Lost Stories of Looted Art	<b>16</b> <b>1:00 pm</b> WNSCI Mah Jongg Game	<b>17</b> <b>11:00 am</b> The Mindful or Mindless Life with Rabbi Geffen <b>5:00 pm</b> WNSCI Shabbat Schmooze on Zoom <b>6:15 pm</b> Kabbalat Shabbat Service	<b>18</b> <b>9:30 am</b> Shabbat Morning Minyan
<b>19</b>	<b>20</b>	<b>21</b> <b>7:00 pm</b> FA Meeting	<b>22</b> <b>6:00 pm</b> AA Meeting	<b>23</b> <b>1:00 pm</b> WNSCI Mah Jongg Game	<b>24</b> <b>1:00 pm</b> Office Closes for Winter Break <b>6:15 pm</b> Kabbalat Shabbat Service Ask the Clergy	<b>25</b> <b>9:30 am</b> Shabbat Morning Minyan
<b>26</b> <b>Building Closed for Winter Break</b>	<b>27</b> <b>Building Closed for Winter Break</b>	<b>28</b> <b>Building Closed for Winter Break</b>	<b>29</b> <b>Building Closed for Winter Break</b> <b>8:00 pm</b> Healing Service with Cantor Goldstein	<b>30</b> <b>Building Closed for Winter Break</b>	<b>31</b> <b>Office Closed for Winter Break</b> <b>5:00 pm</b> Special Time Abbreviated Kabbalat Shabbat Service	

\* in person at NSCI   ♦ on Zoom   ■ on Streamspot   ● on Facebook



**NORTH SHORE  
CONGREGATION  
ISRAEL**

1185 SHERIDAN ROAD  
GLENCOE, ILLINOIS 60022

Admin. Office: 847.835.0724  
School Office: 847.835.7258

**NSCI.org**

---

**DATED MATERIAL.  
DO NOT DELAY.  
CHANGE SERVICE REQUESTED.**

---

*The Bulletin* (USPS #072-800)  
is published bimonthly by  
North Shore Congregation Israel,  
1185 Sheridan Road,  
Glencoe, IL 60022.  
Periodicals Postage paid at Glencoe, IL  
and additional mailing offices.

POSTMASTER:  
Please send address changes to  
*The Bulletin*, 1185 Sheridan Road,  
Glencoe, IL 60022.

## IMPORTANT BUILDING DATES

The office will be closed for  
Thanksgiving at 1:00 PM on  
November 24 and will reopen  
November 29 at 9:00 AM.

The office will also be closed  
for winter break starting at 1:00 PM  
on December 24 and will reopen  
January 3 at 9:00 AM.

Kabbalat Shabbat: 6:15 PM indoors,  
large sanctuary, starting November 5.

NYE Shabbat service is an abbreviated  
Shabbat service, 5:00–5:30 PM.

## IN CASE OF AN AFTER- HOURS EMERGENCY—

death of a loved one, unexpected  
hospitalization or accident—  
please call the synagogue office  
at 847.835.0724 and follow the  
prompts for an emergency.  
One of our staff will call you  
back as soon as possible.

**Chanukah begins on Sunday night, November 28.**

*Chanukah blessings, recipes and resources can be found on the NSCI website:*  
[www.nsci.org/worship/holidays#Chanukah](http://www.nsci.org/worship/holidays#Chanukah)

**As a community, we will celebrate Chanukah at our Family Winter Fest.**



# Family Winter Fest

## Hands-On Mitzvah Projects, Chanukah Games & Crafts, Food Trucks, Music & More!

**SUNDAY, DECEMBER 5, 11:00 AM–12:30 PM**

**Celebrate Chanukah at NSCI with activities for all ages & stages,  
and lunch for purchase from Soul & Smoke and The Fat Shallot  
as well as Stan's Donuts (our treat)!**

Register online at [www.nsci.org/winterfest](http://www.nsci.org/winterfest).

For more information, contact Susan at 847.835.0724 or [susane@nsci.org](mailto:susane@nsci.org).

