



# MESSENGER

MARCH/APRIL 2024 • ADAR/NISAN 5784 • VOLUME 66, NO. 2

MESSENGER FUNDED BY THE PAUL Z"L AND LOIS Z"L KATZMAN ENDOWMENT

*come on*  
**Barbie**  
*let's go Purim*



**SUNDAY, MARCH 17**

*Family Barbie Spiel &  
YFTI Purim Carnival*

SEE PAGE 5-7 FOR  
MORE INFORMATION  
ON PURIM.



# MESSAGE FROM OUR LEADERSHIP



## THE SPIEL THAT STOLE THE SHOW

In the wacky world of Purim, where costumes are mandatory and noisemakers a must, there's one thing that reigns supreme: the spiel. Yes, you heard it right, the spiel – that raucous, irreverent, and downright hilarious retelling of the Purim story that turns the holiday into a laugh-out-loud extravaganza. Because let's face it, Purim would be nothing without the spiel!

Picture this: a group of would-be Hollywood actors, (prior to finding their higher calling - see clergy), dress in outrageous costumes that range from the sublime to the ridiculous and take to the bimah to reenact the tale of Esther, Mordechai, and the nefarious Haman. What unfolds from there is often highly confidential, particularly when it involves adult revelry.

You see, the spiel is where all the juicy details of the Purim story get a comedic makeover. Esther becomes a sassy socialite with a penchant for pink, Mordechai morphs into a wisecracking sidekick straight out of a buddy cop movie, and Haman? Well, let's just say he's the villain you love to hate, complete with a twirly mustache and a maniacal laugh that echoes through the shul.

In true Temple Israel fashion, we are proud to present our TWO annual spiels:

First, there's this year's hotly anticipated 18+ Adult Spiel: Election Edition 2024, Round 2 featuring [REDACTED] doing some absolutely insane [REDACTED]!! Whatever speculation there's been that a copy of this year's geniusly penned script by Cantor Smolash has been circulating through the temple community is pure conjecture. We assure you. So don't miss your opportunity to join us for one of our favorite nights at temple but, please remember our slogan, "what happens on Purim, stays on Purim".

And, this year's Family Spiel takes place where "every night is girls' night." Come on, Barbie! In this whimsical retelling penned by yours truly, Purim takes a twist with Barbie as Esther and Ken as King Ahashverosh.

Barbie, with her impeccable fashion sense and flawless hair, finds herself thrust into the limelight when she wins a kingdom-wide beauty pageant. Little did she know that this glittery crown would come with a side of palace intrigue and drama!

Meanwhile, Ken, with his perfectly coiffed hair and regal demeanor, rules over the kingdom with a mix of cluelessness and repellent charm. His idea of diplomacy involves throwing extravagant parties and admiring himself in the royal mirror. But when Barbie catches his eye, he's smitten faster than you can say, "long-term-low-commitment-distance girlfriend."

As the story unfolds, Barbie must navigate the treacherous waters of palace politics, with her trusty squad of BFFs by her side. Together, they scheme and plot to outwit the conniving villain of the story, Haman, who bears a striking resemblance to that one pesky ex-boyfriend who just won't go away.

With her signature blend of beauty and brains, Barbie hatches a plan to save her people from Haman's evil plot. But first, she must reveal her true identity to Ken, who is totally shook to learn that his crush is not just a pretty face, but a Jew, and a brave and savvy queen.

In a whirlwind of glitter, glamour, and hilarious spiel-y-ness, Barbie triumphs over adversity, proving that in a world filled with challenges and uncertainties, hope shines brightest in the darkest of times. And as they celebrate their victory with an epic Purim party, they remind us that sometimes, the most unexpected heroes can emerge from the unlikeliest of places, and happily ever after is always just one fabulous outfit away.

Chag Purim Sameach!

Cantor Neil Michaels



# RELIGIOUS SERVICES & EVENTS



**In Review: Shabbat Shira** - This year's Shabbat Shira was nothing short of extraordinary! We were honored to have the incredibly talented Dr. Lorry Black, a renowned percussionist, music arranger, and conductor, join us in leading worship for the evening. Thank you to everyone who joined us for an unforgettable night filled with the rich sounds of the Jewish world and familiar Temple tunes.

## KABBALAT SHABBAT

Fridays • 7pm at Temple Israel

## SUNDAY MORNING MINYAN SERVICE

Sundays • 9am at Temple Israel

*Minyan is funded by the Mary Lou & Gary Berndt Minyan Fund, the Lipson Family Daily Minyan Fund and the Samson Family Minyan Fund.*

Please join us as we pray together for comfort, healing and peace.

More info: [www.temple-israel.org/event/minyan](http://www.temple-israel.org/event/minyan)

## ROSH CHODESH

Thursday, March 7 & Tuesday, April 9 • 7pm

Celebrate the new moon and a new month! This women's spirituality group gathers monthly to discuss important issues of religious and current events.

Register online at [www.temple-israel.org/roshchodesh](http://www.temple-israel.org/roshchodesh)

## IN THIS ISSUE

3 RELIGIOUS SERVICES & EVENTS

5 PURIM

8 TEMPLE COMMUNITY

15 FUNDS IN ACTION

16 WE TAKE PRIDE

18 TEMPLE MUSIC

20 ROBERT SOSNICK FAMILY LIFE

22 TEMPLE YOUTH

24 EARLY CHILDHOOD CENTER

26 TYNER RELIGIOUS SCHOOL

27 BROTHERHOOD

28 WOMEN OF TEMPLE ISRAEL

30 LIFE CYCLE EVENTS

33 TRIBUTES



# Carb-A-Lot Shabbat

## A Pre-Passover Shabbat Extravaganza



Friday, April 19

5:45pm dinner (RSVP required)

6:30pm – **EARLY** Kabbalat Shabbat Service  
with T'fillah Kids Choir

The congregation is invited to join us for special Shabbat! Put on your stretchy pants and join us at 5:45pm for a carb-licious Shabbat dinner with crafts and activities for the kids. Dinner Cost: Adults: \$18/member; \$25/non-member; Children: \$12/child age 5-12; no cost 4yrs and under. (No cost to children in the choir)

Register for dinner by Monday, April 15 at  
[www.temple-israel.org/event/carb-a-lot](http://www.temple-israel.org/event/carb-a-lot)



At 6:30pm, we are proud to feature our T'fillah Kids Choir during an early Kabbalat Shabbat service.

Children and their families are encouraged to stay after the service for a special surprise oneg with a sweet edible cookie dough to-go buffet on the way out!



## KABBALAT SHABBAT SERVICE WITH TEEN T'FILLAH TEAM

Friday, April 4 • 7pm

Need a boost of positive energy and inspiration? Be sure to attend our Teen T'fillah Team Kabbalat Shabbat service as our young leaders share heartfelt prayer in joyous harmony.



## BLESSING OF THE NEWBORNS

Tuesday, April 23 • 10:30am

*Supported by the Les & Bob Iwrey Children's Bedtime Ritual Fund.*

All children born in the last twelve months to families of our congregation are invited to Passover morning services for a special blessing ceremony! Together with our clergy, little ones will be blessed by their parents and grandparents under the Chuppah. Please register by 4/19. Special Oneg will follow the Service. **For more information and to register:** [www.temple-israel.org/event/Newborns](http://www.temple-israel.org/event/Newborns)



## PASSOVER YIZKOR

Monday, April 29 • 7pm at Temple Israel

We remember our loved ones at Passover and honor their memories with a special picture montage. **If you would like to include a photo, please email one digital image (along with a full name of your loved one) to Leah at [leah@temple-israel.org](mailto:leah@temple-israel.org) by 4/24.** Thank you for participating in this special service.



# PURIM

Sunday,  
March 17  
2024

# come on Barbie lets go Purim

## THE 'Family' BARBIE SPIEL

10:45AM @ TEMPLE ISRAEL

Grab your favorite pink outfit and get ready to celebrate Purim – Barbie-style! Featuring a hilarious script and numerous references to the hit movie, *The Barbie Spiel* will be sure to entertain families of all ages. Remember to dress up in your favorite Barbie or Ken outfit and get ready to spin those \*groggers.

*\*Please bring a box of kosher pasta or macaroni to be used as a grogger. Boxes will be donated to Yad Ezra to help fight food insecurity in our community.*

## YFTI PURIM CARNIVAL

9:30 - 10:45AM:

Toddler Carnival Pre Glow!  
(Kids ages 4 & under)

11:30 - 1:30PM:

Games & Food for All Ages!

You won't want to miss out on the fun games, raffle, and, of course, the hamantaschen! Take a break from the fun to have lunch with us! Food from local restaurants will be available for purchase. Cash only.



## YFTI PURIM RAFFLE

Welcome to Temple Israel YFTI Purim Raffle, where all proceeds go toward supporting our YFTI teens scholarship fund!

Purchase your ticket to win incredible items from the Somerset Collection and discounts off a summer camp experience! You don't want to miss out on this amazing opportunity to support YFTI teens.

# Purim 2024



Carnival ▲



Spiel ▲

The YFTI Carnival is supported  
by the YFTI Fund



## SHH...CANTOR MICHAEL SMOLASH REVEALS THE SECRETS BEHIND THE ADULT PURIM SPIEL

As Purim approaches, Temple Israel is once again gearing up for a spirited and laughter-filled Purim Spiel. Cantor Michael Smolash, the creative mind behind the adult spiels, provides a glimpse into the intriguing process of crafting this annual spectacle we all look forward to.

### ***How do you start writing the spiel? Do you pick a theme?***

I think I'm unique in my approach. Most people pick a theme like disco or the Beatles, for example, which does give the advantage of knowing people like those tunes or styles. This choice, however, can be limiting as it locks you into using a set of top Beatles songs, and not all of them lend themselves to Purim parodies.

I do the opposite. I start completely randomly, rummaging around for songs that I find funny, where the hook turns into a great play on words. That's what drives it. When I find a super funny hook that's truly hilarious - like spit your water out funny - I'll happily work a show around that comic anchor.

Temple is also lucky to have my two co-authors, Wendy Shanker and our Cantorial Soloist, Emma Trivax. Wendy is an elite level professional writer, and generously donates her time to write parodies, scenes, jokes and more. Emma also has a super witty ability to craft a parody that will get the crowd cheering and rolling in the aisles.

### ***What's it like working with Temple Israel's clergy members on this?***

They are all super creative and have a keen sense of what will be successful. So every year, there are a lot of surprises for me. Sometimes a bit is really fine-tuned, and it's a great joy to see them follow the beats, get a good laugh, and tell the story through the script. But sometimes, I write something with one idea, and the rabbi will take it in a different direction, which is even funnier. In the end, you definitely have to consider the space for improv from clergy when writing.

### ***And this year is an election version of the Spiel, right?***

I enjoy these a ton. It's a break from just trying to make fun of the Purim characters. And it's a blast because we are a big tent organization, making sure to even it out so everybody feels like their people got picked on a bit.

#### ***Throwback***



***Adult Purim Spiel 2023***





Our zany clergy are back at it, and no one running for office is off limits! Come eat, drink and laugh your way through another adults only Purim spiel!

**Celebrate Purim the way only Temple Israel does!**

**Saturday, March 23, 2024**

**7:00PM WINE & APPETIZERS**

**7:30PM PURIM SPIEL FOLLOWED BY  
DANCE PARTY & HAMENTASHEN**

No charge. Open to the community. Casual dress or come in costume. RSVP is required. **For adults only!**  
[www.temple-israel.org/event/2024AdultSpiel](http://www.temple-israel.org/event/2024AdultSpiel)

For questions, contact Maya Grinboim at  
248-661-5700 or [maya@temple-israel.org](mailto:maya@temple-israel.org)



**KIDS  
NIGHT IN**

Kids\* are invited to a spectacular night at Temple while their grown-ups enjoy our Adult Purim Spiel!

Be sure to wear your most fashionable pajamas, slippers, and bring your pillow and sleeping bag to get cozy for an epic movie night on the big screen!

Advance registration required by 3/18 at [www.temple-israel.org/event/PurimKids](http://www.temple-israel.org/event/PurimKids)

\$10/child. \*Children must be able to use the bathroom independently. Geared toward children 12 and under.



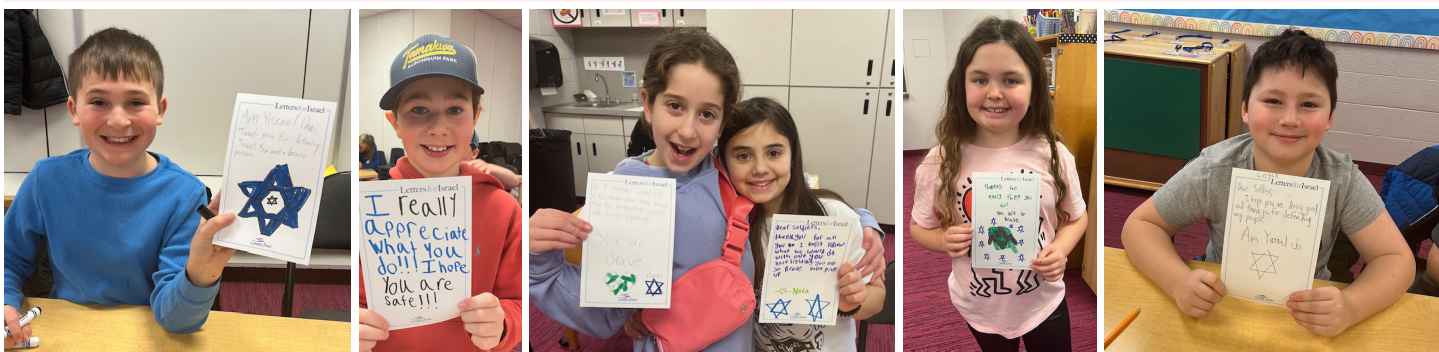
# TEMPLE COMMUNITY



**In Review: Shabbat for Tots** - Our young families celebrated the holiday of Tu B'Shevat, the birthday of the trees, at our Temple Israel Sisterhood Fruit of Our Hands Greenhouse! Families enjoyed a special earth-focused project, bonded through musical prayer, and enjoyed a delightful 'kid'-ush snack. It was a day of connection, joy, and honoring the wonders of nature.



**In Review: PJ's Pancakes & Prayer** - What's better than piping hot pancakes on a cold winter day? Eating them for dinner while wearing cozy pajamas surrounded by friends and clergy at Temple, of course! Did we mention the glowing Havdalah on the Bima in the Sanctuary? This night definitely takes the (pan)cake!



**In Review: Letters for Israel** - During a difficult time in Israel, our incredible congregation worked together to send over 1,000 heartfelt letters and hand-made pieces of artwork to Israeli soldiers on the front lines. Thank you to our members of all ages who helped contribute throughout the month of February!



## FAMILY PROGRAMMING



### SHABBAT AT THE HAWK

Saturday, March 2 • 12pm at The Hawk

*Supported by the Stark Family Fund*

Families are invited to wear their swimsuits, grab their towels, and dive into Shabbat at The Hawk! Spaces are very limited, and priority is given to Temple families with children ages 5-12. Pizza lunch included! **More Info & RSVP:** [www.temple-israel.org/event/hawk](http://www.temple-israel.org/event/hawk)



### SHABBAT FOR TOTS: PURIM STYLE

Saturday, March 9 • 10am at Temple Israel

*Supported by the Stark Family Fund*

Families with children 5 and under are invited to put on their costumes and celebrate Shabbat and PURIM with us! Join us for special craft activities, musical prayer, free play and a "kid"-ush snack! Registration is required. **More Info & RSVP:** [www.temple-israel.org/event/shabbatfortots](http://www.temple-israel.org/event/shabbatfortots)



### SHABBAT FOR TOTS: MATZAH MADNESS

Saturday, April 6 • 10am at Temple Israel

*Supported by the Marsha z"l & Norman z"l Ross ECC*

*Program Fund and the Stark Family Fund*

Families with children 5 and under are invited to join Temple Israel and the ECC as we celebrate Shabbat and Passover! Join us for an extra special keepsake project with artist Gail Rosenbloom Kaplan, followed by musical prayer, free play and a "kid"-ush snack! Registration is required. **More Info & RSVP:** [www.temple-israel.org/event/shabbatfortots](http://www.temple-israel.org/event/shabbatfortots)

# FAMILY CAMP

## APRIL 5–7, 2024

at Butzel Conference Center

**Families\* are invited to join Rabbi Jennifer Kaluzny, Rabbi Jennifer Lader & their families for an exciting Shabbaton weekend away!**

Disconnect to reconnect with family, friends and clergy in an authentic camp environment. We'll celebrate Shabbat together, enjoying the ruach (spirit) of camp with engaging activities, games, and favorite Family Camp traditions like Havdalah and s'mores around a bonfire! Don't miss out on this special memory-making experience!

**To register, scan the QR code or visit:**  
[www.temple-israel.org/event/familycamp24](http://www.temple-israel.org/event/familycamp24)

Space is very limited and open to Temple Israel & ECC members only.

\*Best suited for families with children ages 5-12, but all welcome.



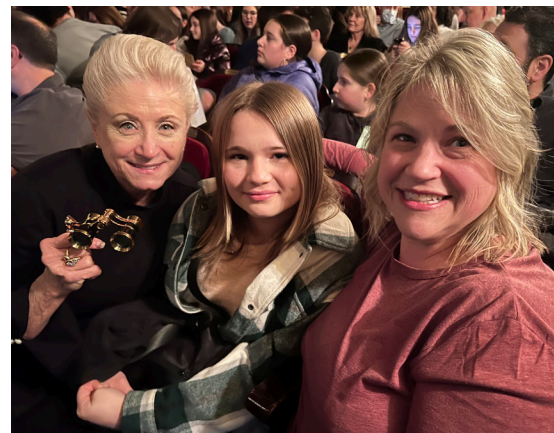
*Supported by the  
Barbara E. Bernstein z"l  
Memorial Fund*





#### In Review: Temple on the Town:

**Wicked** - Who knew there were so many Jewish themes in the story of Wicked?! Rabbis Hornsten, Lader, and Gordon created a special podcast for our guests to enjoy as they made their way to the Detroit Opera House for a fabulous performance of this Broadway favorite!



### 83RD ANNUAL MEETING OF TEMPLE ISRAEL

**Wednesday, March 20 • 6pm Dinner; 7pm Meeting**

We hope you will join us for the 83rd Annual Meeting of Temple Israel. The night begins with dinner at 6pm (registration required) followed by the business portion of the evening at 7pm. The cost for dinner is \$36 per person.

**More Info & RSVP:**

[www.temple-israel.org/event/AnnualMeeting24](http://www.temple-israel.org/event/AnnualMeeting24)

Taylor Weintraub of MAD Patches, to create hand-painted candles while we sip, snack, and schmooze! The candles will make a gorgeous set for Shabbat, but you may end up loving them too much to use! Cost is \$18TM, \$36 NM.

Advance registration required. **More Info & RSVP:**

[www.temple-israel.org/event/womenandwine](http://www.temple-israel.org/event/womenandwine)



## ADULT PROGRAMMING



### WOMEN & WINE

**Tuesday, March 5 • 7pm at Temple Israel**

It's ladies' night at Temple and there is fun to be had! Bring your girlfriends and your favorite beverage of choice as we join Temple mom and local artist,

### KNITZ & KIBBITZ

**Monday, March 11 & April 8 • 1:30pm at Temple**

**Supported by the Aaron Fenton z"l Memorial Fund**

Enjoy a casual afternoon of knitting, crocheting, or your project of choice during our monthly Knitz & Kibbitz gathering! Bring your materials and fellow fiber enthusiasts along to share ideas, inspiration, and one another's company. Coffee, tea and snacks will be served. All skill levels welcome. Advance registration required.

**More Info & RSVP:** [www.temple-israel.org/event/knitz](http://www.temple-israel.org/event/knitz)





### In Review: Knitz & Kibbitz

We were absolutely blown away by the talent we saw at our first Knitz & Kibbitz session! There were knitters and needle pointers, weavers and more, and everyone was just thrilled to share their passion, projects, and pro-tips with fellow fiber-enthusiasts!



### TEMPLE ON THE TOWN: MODI

Thursday, March 14 • 5pm The Office Coffee Shop;  
6:30pm Royal Oak Music Theater

Join Temple Israel for night of laughter and libations featuring famed Israeli comedian, Modi, as he performs at the Royal Oak Music Theater. Modi is one of the comedy circuit's most sought-after performers! Meet us at The Office Coffee Shop for drinks and apps before the show (right across from the theater). A portion of ticket proceeds will be donated to charities and organizations dedicated to helping the recovery efforts in Israel. Spaces are limited and priority is given to Temple members. Cost: \$70/Temple members; \$85/Non-members. Pricing includes ticket, drinks, and appetizers before the show. Advance registration required. **More Info & RSVP:** [www.temple-israel.org/event/modi](http://www.temple-israel.org/event/modi)

In conjunction with the Caring Community,  
Celebrating Our 27th Year

# 27<sup>YEARS</sup> AFTERNOON Concert SERIES

The Robert Sosnick  
Family Life Center

## BLOOMFIELD HILLS JAZZ BAND

THURSDAY, APRIL 18 • 2:00 PM  
TEMPLE ISRAEL & VIRTUAL\*

### SAVE THE DATE FOR THESE UPCOMING PERFORMANCES:

**MAY 16:** DAVID SYME  
**JUNE 20:** TEMPLE TRIO - BROADWAY TUNES  
**JULY 18:** MICHAEL CARLUCCIO  
**AUGUST 15:** MATTHEW BALL  
**SEPTEMBER 19:** ASHLEY & AARON MARKOVITZ  
NO OCTOBER CONCERT DUE TO SUKKOT

Open to the community and free of charge.  
More information and register at:  
[www.temple-israel.org/event/afternoon24](http://www.temple-israel.org/event/afternoon24)

*Partially funded by the Caring Community, the David Arthur Stulberg Memorial Fund, the Harry & Phyllis Kifferstein Senior Adult Programming Fund and the Iwrey Family Special Needs Fund.*

# PASSOVER *Second Night Seder*

***Tuesday, April 23, 2024 • 5:30pm at Temple Israel***

Led by the Temple Israel clergy, the community is invited to join a fun-filled evening of song and the retelling of the ancient story of the Exodus from Egypt.

## ***Cost:***

Members: \$60 for adult, \$20 for children (ages 5-12) and free for those 4 and under

Non-member: \$75 for adults, \$25 for children (ages 5-12) and free for those 4 and under

*The price of the Seder includes a 3% contribution to MAZON in keeping with the tradition of Passover that all who are hungry may come and eat.*

## ***Deadline:***

The registration deadline is Friday, April 5th. Limited number of spaces will be available after that date at a cost of \$75 per person regardless of age with no preferred seating.

## ***Catering:***

Our Second Night Seder is catered by Forte Belanger.

Please designate on the registration whether you have any dietary needs.

## ***Register:***

[www.temple-israel.org/event/Seder2024](http://www.temple-israel.org/event/Seder2024)



## ***Haggadah:***

All registrants will need to bring a copy of our family Haggadah, A Seder for All Generations. They are available for purchase prior to the Seder at a cost of \$8 per copy from the Temple Israel office. You can also purchase it with your online registration.

## ***Questions:***

Contact Claudia at [clutman@temple-israel.org](mailto:clutman@temple-israel.org) or 248-661-5700.







**In Review: Kemach Baking Club: Kneaded with Love** - Temple Israel's first session of our monthly Kemach Baking Club went off without a hitch! We welcomed local organization, Kneaded With Love, and baked nearly 100 loaves of bread that was donated to our Temple's Fresh Food Pantry. Thank you to the David and Stacy Gordon Family "Do Good Fund" and our co-chairs Loren Stewart and Ilene Mitz for making this happen!



## GAME DAY

**Tuesdays, March 19 & April 16 • 1pm at Temple**  
**Supported by the Temple Israel Adult Programming Fund**  
 Bring your favorite game and meet your friends at Temple Israel's monthly Game Day for your game of choice. Coffee, tea, and snacks will be served. Open to the community and no cost to attend. Reservations are required by the Friday prior to each Game Day. **More Info & RSVP:** [www.temple-israel.org/event/GameDay](http://www.temple-israel.org/event/GameDay)



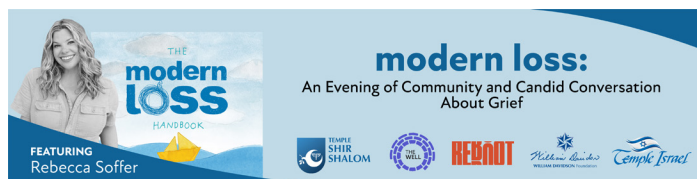
## THE KEMACH CLUB

**Tuesday, March 19 & April 11 • 6:30pm at Temple Israel**  
**Supported by the David and Stacy Gordon Family "Do Good Fund"**  
 Passionate bakers and do-gooders, join us monthly for The Kemach Baking Club! (Ein Kemach, ein Torah—without flour there is no Torah). Enjoy baking different recipes each month while having fun connecting with other bakers at Temple. All baked goods will be donated to our Fresh Food Pantry following the program. Advance registration required. **More Info & RSVP:** [www.temple-israel.org/event/kemach](http://www.temple-israel.org/event/kemach)



## TI FILMS & FORUM: THE DEAD SEA GUARDIANS

**Tuesday, April 2 • 1:30pm and 7pm at Temple**  
**Supported by the Temple Israel Adult Programming Fund**  
 Bring your friends and grab some popcorn; it's showtime! Temple Israel is pleased to present a new monthly movie series featuring Jewish and Israeli films, followed by a reflective talkback session. Enjoy thought-provoking, entertaining, and educational films of various genres with both a daytime and evening viewing option. This month's film: The Dead Sea Guardians. No cost for TM, \$10 for NM. Advance registration required. **More Info & RSVP:** [www.temple-israel.org/event/film](http://www.temple-israel.org/event/film)



## MODERN LOSS

**Tuesday, April 9 • 6:30pm at Adat Shalom**  
 The community is invited to join Rabbi Jennifer Kaluzny and local clergy members for a candid conversation with author Rebecca Soffer about grief and loss. More information to come.





**In Review: Tu B'Shevat with a Twist** - We sipped, snacked, and socialized at Tu B'Shevat with a Twist at Mongers' Provisions in downtown Berkley! Rabbi Jen Kaluzny taught us about the beauty of the holiday and owner Zach Berg led us through an expertly guided wine pairing exploring the seven species!






A Partnership for Community Relations and Jewish Advocacy

**SAVE THE DATE**  
**Thursday, May 23**  
 Temple Israel - 6 PM

JCRC/AJC Detroit 2024  
**Community Bridge  
 Builders Award**

**Honoring**  
**Rabbi Marla Hornsten and**  
**Reverend Dr. DeeDee Coleman**




## TIKKUN OLAM:

### DRIVE-THRU FREE FRESH FOOD PANTRY

Thursdays, March 14 & 28, April 11 & 25

2:45-4:45pm at Temple Israel Sanctuary Portico

The pantry is operating as a contact-free drive-thru on the 2nd and 4th Thursday of each month. Open to the community. Need is the only requirement.

### FREE CLINICS

Thursdays, March 14 & 28, April 11 & 25 • 12-4pm

Wayne Health Mobile unit will be hosting free clinics in the Temple Israel parking lot! Insurance and ID are not required. No appointment needed.

For information on what services are offered, visit

[www.temple-israel.org/event/waynemobileunit](http://www.temple-israel.org/event/waynemobileunit)

## Goodman Family Judaic & Archival MUSEUM at Temple Israel

The Goodman Family Museum is pleased to welcome our very own Temple Israel community artists to submit their Judaic art to be included in our upcoming curated exhibit Summer 2024.

**All mediums are welcome, and applicants may submit pictures of their pieces with a short description to [hdeutch@temple-israel.org](mailto:hdeutch@temple-israel.org) by April 19 to be considered.**

## FUNDS IN ACTION

We are thrilled to highlight some of our wonderful funds in this issue of The Messenger. These funds allow Temple Israel to provide for those in need.

### DONNA & ALAN ASP EMERGENCY ASSISTANCE FUND

Purpose: Provides emergency assistance to Temple Israel members in crisis.

### THE DAVID AND STACY GORDON FAMILY "DO GOOD" FUND

Purpose: Supports programming at Temple Israel that benefits the greater good of our community specifically geared toward social action.

### ZACHARY M. TALAN EDELSON Z"l MACCABI SCHOLARSHIP FUND

Purpose: Provides scholarships for Temple Israel Maccabi participants.

### GEORGE Z"l & SHIRLEY Z"l AGREE CARING COMMUNITY FUND

Purpose: Provides parties for residents of nursing homes, orphanages, and shelters.

To learn more about all our special funds or make a donation, please visit [temple-israel.org/funds](http://temple-israel.org/funds).



# WE TAKE PRIDE

## STAFF SPOTLIGHT:

It's all about the details for Temple Israel's events staff.

Whether it's putting together a wedding, a B'Mitzvah, or secular event, Claudia Lutman and Kristin Zivojnov specialize in the finer details that make every event at Temple Israel one to remember.

"For me it's really about two things," Claudia said. "It's about connecting with people and making sure every last detail is attended to. I think those things work hand-in-hand to create the best possible event."

Claudia would go so far to say she's obsessed with logistics. On a recent cruise during her vacation, she took a tour of the ship, specifically so she could observe and learn every little thing that made it work.

It's been a focus for Claudia throughout her career as an event planner, which started after an early pivot from working as a paralegal in Virginia.

"I took a job as an assistant and event planner for a Latin American Investment Banking Firm, and learned pretty quickly I was really good at it. I truly enjoy planning and finding ways to elevate a great event," Claudia said.

From there Claudia worked for a country club planning social events followed by running her own business, focusing primarily on weddings, before joining Temple Israel in September of 2022.

Since starting at Temple, Claudia has been committed to taking our member events to a new level. Realizing that each event represents a significant moment in a member's life, she works closely with each family ensuring that we bring their vision to life. Additionally, Claudia has been working on connecting Temple Israel to the larger community.



"One of my goals is to bring in more community events to Temple," Claudia said. With our beautiful event spaces, and numerous catering options, Temple is well positioned to service any event from our community partners.

Kristin has been with Temple and working with Claudia as an event and catering assistant for almost a year now. She, much like Claudia, has a passion for organization and logistics which serves her well in her current position.

"I think it goes hand-in-hand with my everyday life. So for that reason I think Claudia and I work really well together."

Kristin focuses more of her time on in-house events, and said congregational Shabbat Dinners have been a highlight of her job thus far.

"I think it's been great to get to know the people and see how everyone here cares for each other," Kristin said. "It's a place that feels inclusive and welcoming to everyone, and I think that's been one of the big things we focus on when planning and running our events."

## MAZEL MOMENTS:

### Mazel tov to our esteemed Temple members!

We are proud to have you in our Temple Israel family.

**Jacob Mills** on earning the honorable rank of Eagle Scout at his Eagle Board of Review.

**Michael Berger**, who has been elected as the President of the United Jewish Foundation

**Brandon Witt** on achieving semifinalist with the Frankel Jewish Academy tennis team at the state tournament.

**Dr. Charlie Schwartz** on being inducted as President of Franklin Hills.

**Jim Berk** on winning four swimming medals – three gold and one silver – at the Michigan Senior Olympics.

**Suzanne Simon** on being honored as one of Jewish Senior Life's 8 over 80.

**Edith Broida** on being honored as one of Jewish Senior Life's 8 over 80.

**Sunny Shanker** on becoming a published author. You can find Sunny's book titled *Julia Nickson, 12-Year Old Spy* on Amazon!

### Mazel tov to all those named to the 36 under 36 list!

We are very proud of these young Jewish leaders and the incredible impact they are making in our community.

### Mazel tov to our clergy on their recent achievements!



**Rabbi Jen Lader** will be recognized for completing her 18Doors' Rukin Rabbinic Fellowship along with her cohort group of clergy members from across North America. This recognition will take place during a Siyum (Completion Ceremony).

Rabbi Lader has spent the last two years in the program which focuses on inclusive practices for serving Jewish interfaith couples and families. According to 18Doors, this participation in this Fellowship is a demonstration of Rabbi Lader's commitment to ensuring a more welcoming and inclusive Jewish future. Mazel Tov to Rabbi Lader!



**Rabbi Marla Hornsten** will be receiving the Community Bridge Builders Award by JCRC/AJC Detroit at their annual event on May 23rd.

Rabbi Marla currently serves as the co-chair of the Coalition for Black and Jewish Unity. We are proud of the vital work she does in strengthening the relationship between the Black and Jewish communities and the tremendous impact she has made. Mazel Tov on this well deserved honor!



# MUSIC AT TEMPLE

## *Schmier Concert*

**SONIA LEE**

VIOLINIST



**BENJAMIN LOEB**

PIANIST

**SUNDAY, APRIL 14 • 4:00PM AT TEMPLE ISRAEL**

Join us as Temple Israel's Schmier Concert Series presents perennial favorite violinist Sonia Lee in an uplifting program with remarkable pianist and conductor, Benjamin Loeb, her longtime friend.

Followed by a dessert reception and an opportunity to meet the artists.

Admission is free, open to the community!

RSVP required at [www.temple-israel.org/event/schmier4-14-24](http://www.temple-israel.org/event/schmier4-14-24)



Save the dates:

6/9/2024: Schmier Concert - Aebersold & Neiweem, 4:00PM, Chapel

7/28/24: Schmier Concert - Westbound Situation, 4:00PM, Chapel

This program is supported by the  
Regene & Leslie Schmier Concert Series Endowment Fund.



LAKER CONCERT

# THE KLEZMERS תאם פלאי

Temple Israel



*Yiddish music has seen our people through thick and thin. It laughs and dances with us.  
It weeps with and comfort us. It fills our hearts with a spirit of joy and resilience  
no matter the challenge of the times.*

**SUNDAY, MAY 5, 2024 | 4:00PM AT TEMPLE ISRAEL**

Come drink in the best of Klezmer and Yiddish music as true masters from New York City join our own Cantor Smolash for an uplifting concert of the very best of Yiddish and Klezmer music. Featuring Broadway and TV star Daniella Rabbani and music director of B'nai Jeshurun, NYC, Dan Nadel.

Admission is free, open to the community!

Rsvp required at [www.temple-israel.org/event/laker24](http://www.temple-israel.org/event/laker24)

*Sponsored in loving memory of Sarah & Harry Laker.*





# THE ROBERT SOSNICK FAMILY LIFE CENTER

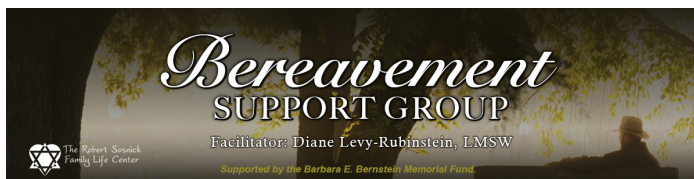
## SUPPORT GROUPS:

For more information on any of these support groups, contact Laura Koziol at [laura@temple-israel.org](mailto:laura@temple-israel.org) or 248-661-5700.

### AA- ALCOHOLICS ANONYMOUS

Thursdays • 7:30pm at Temple Israel

Open to individuals who have a desire to stop using alcohol and/or other substances. Meeting utilizes the AA 12-Step Program. For more information contact Fred Stevenson at [frednstevenson@gmail.com](mailto:frednstevenson@gmail.com) or 248-872-8652.



### VIRTUAL BEREAVEMENT SUPPORT GROUP

Thursday, March 7 & 21 • 7pm (ZOOM), 

Thursday, April 11 & 25 • 7pm (TEMPLE ISRAEL)

Supported by the Barbara E. Bernstein z"l Memorial Fund

After the death of a loved one, there are so many thoughts, feelings, and experiences to deal with. Please join Diane Levy-Rubinstein, LMSW and others in sharing one's grief within a group setting while also defining the uniqueness of your grief. *\*Please note that we must have at least 4 participants registered or we may need to cancel. It is important to register online.* More Info & RSVP: [www.temple-israel.org/event/Bereavement](http://www.temple-israel.org/event/Bereavement)

## Compassionate Connections

A Support Group for Those Supporting an Aging Loved One



### COMPASSIONATE CONNECTIONS

Tuesday, March 12 & April 9 • 6pm at Temple

Are you dealing with challenges as your parents age? How do I know if my parent needs help? Come join others who are feeling the same and have an open and supportive conversation with Alyssa Tobias, MSW, CDP. More Info & RSVP: [www.temple-israel.org/event/AgingParent](http://www.temple-israel.org/event/AgingParent)



### VIRTUAL CAREGIVER SUPPORT GROUP

Tuesday, March 26 & April 30 • 10am via Zoom

Build a support system with people who understand Dementia and other aging challenges. Alzheimer's Association® support groups are a safe place for people living with dementia and their care partners to talk through issues and ways of coping. Facilitated by Karen Kline. Space is limited. More Info & RSVP: [www.temple-israel.org/event/Caregiver](http://www.temple-israel.org/event/Caregiver)



### VIRTUAL DIVORCE SUPPORT GROUP

Tuesday, April 2, 9, 16 & 30 • 7:30pm via Zoom

This group is for men and women considering divorce, in the midst of the process, or post divorced seeking support, encouragement, and a new way forward into your life's next chapter. Facilitated by Mona Shane, MA, LPC. All sessions are open to the community and free of charge. Registration is required. More Info & RSVP: [www.temple-israel.org/event/DivorceSupportGroup](http://www.temple-israel.org/event/DivorceSupportGroup)

## COMING THIS SPRING...

If interested, please email Laura to be placed on an interest list: [laura@temple-israel.org](mailto:laura@temple-israel.org)

### TREMOR SUPPORT GROUP

Be on the lookout for Temple Israel's new Tremor Support Group.

### SPECIAL NEEDS YOGA: MINDFULNESS & MEDITATION WITH LAUREN

Be on the lookout for Temple Israel's new Young Adult Special Needs Yoga & Movement class!



**In Review:** We are so grateful to Lois, Robyn & Brianna's class for sharing their kids & their tzedakah with us. They donated \$175 to our Kari Provizer Lifting Our Families Fund for the Robert Sosnick Family Life Center. The money will go toward helping families in crisis.

## PROGRAMMING:

For more information on any of these programs, contact Laura Koziol at [laura@temple-israel.org](mailto:laura@temple-israel.org) or 248-661-5700.



### ADULT HEALTH & FITNESS CLASS

**Tuesday:** March 5, 12, 19, 26, April 2, 9, 16, 30 (no class 4/23 due to Passover) • 3pm at Temple Israel

**Thursday:** March 7, 14, 21, 28, April 4, 11, 18, 25  
3pm at Temple Israel

Due to high demand, we are continuing these classes indefinitely! Join us for one or all of these classes which will focus on improving balance, mobility, coordination, flexibility, and overall wellness through a structured, low impact exercise program performed from both seated and standing positions. Class led by NSCA Certified trainer Matt Leonard. Cost is \$5 per class (member); \$10 per class (non-member). **For more info and to purchase our new Punch Card online:** [www.temple-israel.org/event/Fitness](http://www.temple-israel.org/event/Fitness)



### RECHARGE, REJUVENATE & REFLECT

**Tuesday, March 26 & April 16 • 5:30pm at Temple**

Facilitator Gayle Goodman, 200 RYT - Join us for a relaxing evening of yoga, Qigong, and sound therapy to find your balance. This event is best suited for ages 30-75. **More**

**Info & RSVP:** [www.temple-israel.org/event/Yoga](http://www.temple-israel.org/event/Yoga)



## GOTTA GET TO GEORGE!

**Registration is open for Summer 2024!**

Join our Michigan campers in the one-of-a-kind life-changing experience that is sleep away camp. Through informal Jewish education, the arts, a state-of-the-art waterfront program, an intense ropes challenge course, and great athletic facilities, Camp George offers campers the experience of a lifetime.

**Register now!** <https://campgeorge.org>

**URJ Camp George 416-638-2635**

For more information contact Laura Koziol at 248-661-5700 or [laura@temple-israel.org](mailto:laura@temple-israel.org)

*Supported by the Robert Sosnick Family Life Center.*





# TEMPLE YOUTH



**In Review:** YFTI Mystery Night - Mystery night was full of surprises! Starting with dinner and gaming at Dave & Busters. We then ventured over to everyone's favorite store, Target. Each teen ran around looking for a small gift for a white elephant gift exchange. We closed out the night with Havdalah and Ice Cream Sundaes.



**In Review:** Quintessential Quality Quest Bakeoff - Our middle schoolers made over 300 delicious sugar cookies that were given out at our Forgotten Harvest Fresh Food Pantry. Of course, we had to test a few for quality control! This event was generously supported by the Phyllis & Dr. Gerald z"l Brickner Family "QUEST" Fund.



# Purim Carnival *WE NEED VOLUNTEERS!*

**Sunday, March 17**

To sign up, visit [www.temple-israel.org/event/2024PurimCarnival](http://www.temple-israel.org/event/2024PurimCarnival) or scan the QR.  
Questions? Contact Ross at [rklar@temple-israel.org](mailto:rklar@temple-israel.org) or 248-661-5700.

# Purim 2024



## YFTI - SAVE THE DATES!

**Monday, April 8 • YFTI Board Elections**

**May 3–5 • YFTI City Trip – We are heading to Chicago!**



## BUNK45: BAKING BANANZA

**Sunday, March 3 • 11:30am at Temple Israel**

Get your oven mitts ready and join Bunk45 on this culinary conquest as we bake chocolate chip cookies from scratch! We will also have a YFTI teen led activity to tie the whole afternoon together. We, of course, will be enjoying our sweet creations but also will be donating some of the cookies we make to Temple Israel's Fresh food pantry. Please register by 2/29. **More Info:**  
[www.temple-israel.org/event/bananza](http://www.temple-israel.org/event/bananza)



## QUEST: SOCCER AND SOCIAL ACTION

*Supported by the Phyllis & Dr. Gerald z"l Brickner Family  
"QUEST" Fund*

**Saturday, April 6 • 11:30am at Temple**

Quest's next adventure is taking us to the soccer pitch. We have a unique experience planned where we will attend a soccer game for our home town Detroit City FC! Also, like all Quest events, we will have a special service project tied in. A portion of the money collected will be donated to DCFC 2023 Charity Partner: Brilliant Detroit/ Spartan Strong Fund. Cost is \$18/person. Please register by 4/1. Parent chaperones come for free! **More Info & RSVP:** [www.temple-israel.org/event/soccer](http://www.temple-israel.org/event/soccer)



# THE AUDREY & WILLIAM FARBER ENDOWMENT FUND FOR THE SUSAN & RABBI HAROLD LOSS EARLY CHILDHOOD CENTER



**In Review: Tu B'Shevat** - The ECC classes spent time learning about trees, plants, seeds, and what living things need to grow. Students celebrated with Tu B'Shevat Seders, tasting olives, figs, dates, oranges, pomegranates, and more; fruits we get from trees. The children visited our Temple Israel Sisterhood Fruit of Our Hands Greenhouse run by Jay Mellin, our knowledgeable greenhouse volunteer. Our young botanists explored and planted seeds and will care for their plants as they grow. We are reminded of the Jewish Value, "Shomrei Adamah," taking care of the earth.





## FAMILY FUN - SPRING 2024

**FEW SPACES LEFT - SIGN UP TODAY!**

**BABY BUNCH** - will resume in May

**CHALLAH TO HAMANTASCHEN** - will resume in May

**SHABBAT SHABOOM** - Spring Session (3 classes)

Fridays, April 5, 12 & 19 • 9:30-10:30am

Come ready to celebrate Shabbat! Forest Levy Wolfe incorporates sensory play to engage your child's senses while helping them develop language and motor skills. Forest's education degree and early childhood experience are utilized to encourage fun learning every week.

For more info and to register, scan the QR code or visit: [www.temple-israel.org/familyfun](http://www.temple-israel.org/familyfun)



## 2024-25 EARLY CHILDHOOD REGISTRATION OPEN!

Temple Israel's Early Childhood Center is an exciting and enriching early childhood program full of daily hands-on experiences for children 6 weeks to 5 years old.

**INFANT ROOM** (ages 6 weeks–12 months)

**TODDLER ROOM** (ages 12–20 months)

**MOVIN' ON UP** (ages 20 months and above)

**TODDLER** (ages 24 months and above)

**PRESCHOOL** (ages 36 months and above)

**PRE-K** (ages 4 years and above)



For more information on our early childhood program and to enroll online, scan the QR code or visit: [www.temple-israel.org/learning/ecc-registration-forms](http://www.temple-israel.org/learning/ecc-registration-forms)

## 2024-25 KINDERGARTEN REGISTRATION OPEN!

Our Kindergarten Program offers each child a unique and individualized learning experience, meeting the needs of the whole child developmentally, emotionally, and academically. Our Kindergarten is a fully accredited 5-day program for children 5-6 years old. **For more information on our kindergarten program and to enroll online, scan the QR code or visit:**



[www.temple-israel.org/learning/ecc-registration-forms](http://www.temple-israel.org/learning/ecc-registration-forms)

# CAMP SHEMESH

The Audrey & William Farber Endowment Fund  
For the Susan & Rabbi Harold Loss  
**early childhood center**  
Temple Israel

**SESSION 1:** June 17 – June 28

**SESSION 2:** July 8 – July 26

**SESSION 3:** July 29 – August 16

## REGISTRATION OPEN!

**[WWW.TEMPLE-ISRAEL.ORG/CAMPHEMESH](http://WWW.TEMPLE-ISRAEL.ORG/CAMPHEMESH)**

**Register early as space is limited**

Napping room, earlycare and aftercare are available.  
Campers must be 2 years old by 6/1/24.

Contact Natalie for questions at 248-661-5750.



# TYNER RELIGIOUS SCHOOL



**In Review: Israel Activities** - Throughout this school year at Religious School, our students have been learning about different cities in Israel. All Pre-K through sixth grade students have participated in hands-on activities to bring our learning to life! Some of the experiences included an archeological dig (studying Caesarea), creating candle holders (studying Tzfat), and planting grass and flower seeds (studying Lavi and celebrating Tu Bishvat). We greatly appreciate our partnership with Jewish National Fund (JNF)-USA, who has provided Israel maps for our classrooms and special cups for planting!



**In Review: Raise Your Yad** - On Tuesday, December 5, students in grades 5-8 made their own one-of-a-kind beaded yads with local artist, Gail Kaplan. Students learned that the word, yad, means "hand" in Hebrew and they learned that we use a yad when reading from the Torah. A yad is used to preserve the delicate parchment and ink of the Torah. After creating their unique work of art, students had the opportunity to use their yad in a Torah with Rabbi Gordon! These special yads will be used at students' upcoming B'nai Mitzvahs. A special thank you to the George z"l and Anne z"l Roth Youth Education & Awareness Fund for supporting this event.





## ADULT EDUCATION:

For more information on these Adult Education classes, contact the Education Office at 248-661-5725 or email [lkaplan@temple-israel.org](mailto:lkaplan@temple-israel.org)

If tuition presents a financial hardship, please contact us: [www.temple-israel.org/form/contact-education-office](http://www.temple-israel.org/form/contact-education-office)

### SHABBAT TORAH STUDY

*Supported by the Larry & Eleanor Jackier Jewish Education Fund*

**Saturdays • 9:30-11am**

Join us for a Shabbat morning of insights and investigation into the texts of our Bible. Led by volunteer facilitator, Norrine Freeman.

### SUNDAY TORAH STUDY

*Supported by the Larry & Eleanor Jackier Jewish Education Fund*

**Sundays • 10:15-11:30am**

Join us for group study and reflection on the wisdom of our weekly Torah portions. Led by volunteer facilitator, Ruth Zaromp.

### EDUCATORS' SHABBAT

**Friday, May 10 • 7pm**

Please join us for our annual celebration of Jewish learning, honoring our teachers for their years of service. Teacher awards will be presented at services, followed by a sweet oneg. **For more information, contact Lisa at [lkaplan@temple-israel.org](mailto:lkaplan@temple-israel.org)**

### GRADUATION CLASS OF 2024 CEREMONY

**Tuesday, May 7 • 7pm**

Join us as we honor the Temple Israel Class of 5784/2024 Graduates.

### CONFIRMATION CLASS OF 2024 SHAVUOT SERVICE

**Tuesday, June 11 • 7pm**

Join us as we honor the Temple Israel Class of 5784/2024 Confirmands.

## BROTHERHOOD FUNDRAISER

**March 28, 2024**

*Red Robin® will give*

**20% OF FOOD SALES\*  
BACK TO  
TEMPLE ISRAEL  
BROTHERHOOD**



More Info & print coupon here:  
[www.temple-israel.org/event/redrobin](http://www.temple-israel.org/event/redrobin)

**Red Robin**  
GOURMET BURGERS AND BEERS

## VOLUNTEER OPPORTUNITIES:

### USHER CORPS

Come to Temple Israel on Shabbat, holidays or for other programs and see the smiling faces of our ushers. Do you have time to give on a Friday night or Saturday morning? We are looking for some fresh smiling faces to greet our congregants and guests. We also need ushers for other services and special events – whatever works for you!

**For more information, contact Art Dubin at [countryart@comcast.net](mailto:countryart@comcast.net) or 248-931-1509.**

## PAY YOUR BROTHERHOOD DUES TODAY!

Please remember your dues support the youth and community-oriented programs that Brotherhood sponsors.

**To pay your dues online go to**

**[www.temple-israel.org/Brotherhood](http://www.temple-israel.org/Brotherhood), click the "Join or Renew Membership" link.**

# AFFILIATES - WOMEN OF TEMPLE ISRAEL

FORMERLY KNOWN AS TEMPLE ISRAEL SISTERHOOD

## Election DINNER

Tuesday, April 16, 2024 • 6 pm

Please join us as we elect our new officers and board  
for the 2024-2025 year

**CO-PRESIDENTS:** Laila Cohen & Diane Okun

**VICE PRESIDENTS:**

**Social Action:** Shelly Gordon

**Marketing and Communications:**

Marilyn Nathanson

**Programming:**

Sue Hersh & Renee Unger

**Fundraising:**

Sue Korn & Sandy Matthews

**SECRETARIES:**

**Corresponding:** Simona Seiderman

**Recording:** Stacy Gordon

**Membership/Financial:** Ann Podolsky

**TREASURER:**

Marlene Schwan

**IMMEDIATE PAST PRESIDENT:**

Andi Weiss

**Board Members with One Year Remaining of Two-Year Term Ending June 30, 2025:**

Sarita Bagdade, Mindy Krigel Bricker, Jackie Cohen, Randa Feldman, Margo Goldman,  
Ellen Hechler, Barbara Hornstein, Libby Kaplan, Jan Kelman, Gail Kerwin, Debbie Levin,  
Diane Levy-Rubinstein, Camille McMillan, Karen Kline, Jodi Mills, Jackie Rosender,  
Renee Roth, Barbara Saltz, Deborah Schiffer, Linda Shapiro

**Board Members Beginning Two-Year Term Ending June 30, 2026:**

Shellie Achtman, Brenda Altus, Jillian Berger, Sherry Cantor, Dorothy Collens,  
Lindsay Cox, Debbie Eichenhorn, Rosanne Fienman, Debbie Fishman, Marjorie Franklin,  
Marcia Friedman, Nancy Gad-Harf, Marlene Goudsmit, Susan Kaplan, Gail Katz,  
Elaine Kauffman, Gilda Kopitz, Cammy Krigel, Irene Landau, Phyllis Levitt, Paula Mellin,  
Linda Mickelson, Karen Miller, Kaye Miller, Hazel Nakisher, Nayda Schwartz,  
Michelle Silber, Brenda Steuer, Essie Stillman, Andrea Stoler, Carole Walker,  
Judy Wayne, Annie Weiss, Beverley Wolgin, Sylvia Wolf, Barbara Wool

"Regarding election procedures, nominations for any office or board position  
may be made only by petition, and then only if placed in the hands of  
Women of TI Corresponding Secretary ten (10) days before the election.

Five (5) Women of TI members in good standing must sign the petition.

Members accepting said nominations must be willing, if elected,  
to accept any position available at the time."

### ONLINE GIFT SHOP

Our Fabulous Temple Israel  
gift shop is available for your  
shopping pleasure 24/7. Our gift  
shop has not only Judaica, but  
other beautiful gift items as well.

Please check online (<https://templeisraelgiftshop.com>)

because new items arrive on a regular basis. **March &  
April special - 20% off of all things Passover (excluding  
special orders).** Mailing is also available for a small fee.

For appointments or questions, please call:

Stacy (248) 894-6617, Debbie E (248) 496-4525, or

Debbie F (248) 227-2146



### ORDER YOUR TRIBUTE CARDS!

Let someone know that you are  
thinking of them. Women of Temple  
Israel (WOTI) is pleased to offer a  
choice of tribute cards to mark your  
special occasion or remember someone  
in a time of need. **Purchase online at**

**[www.temple-israel.org/Sisterhood](http://www.temple-israel.org/Sisterhood) or to purchase by**

**phone, call Debbie Levin at 248-514-9769 or email her:**

**[dlevin1218@comcast.net](mailto:dlevin1218@comcast.net)**



### BINGO WITH FLEISCHMAN RESIDENTS

**Wednesday, March 20 & April 17 • 11am**

Come and mingle with us on the 3rd Wednesday of each  
month. We'll join the residents of Fleischman to play  
Bingo. We can always use more volunteers. **Questions?  
Contact Carmen Biederman at 248-892-8709.**

### HOLOCAUST VISIT

**Monday, April 17 • 3pm Zekelman Holocaust Center**

Join WoTI and Hartford Women United as we tour the  
recently reopened Holocaust Center (28123 Orchard Lake  
Rd, Farmington Hills). **If you are interested in joining us,  
please contact Gail Katz at [gailkatz@comcast.net](mailto:gailkatz@comcast.net)**





## MAHJ JONGG TOURNAMENT

Thursday, March 14 • 6:45pm (registration opens at 6pm)

Join us for an exciting mahj jongg tournament!

Whether you're a seasoned player or new to the game, this tournament promises an evening filled with fun, competition, and fantastic prizes. Come alone or bring your Mahj group. Cost is \$30 per person (Pre-Registered); \$35 per person (At the Door). **For more info and to register:** [www.temple-israel.org/event/mahj2024](http://www.temple-israel.org/event/mahj2024)



## MISHLOACH MANOT

On Purim we emphasize the importance of Jewish unity and friendship by sending gifts of food to friends. Women of Temple Israel is excited to present you with a wonderful opportunity to fulfill this mitzvah. Send delicious treats with your Purim greetings to our WOTI Board, Temple Israel Clergy, Family and Friends! **Deadline to order is 3/11.**

**For more info and to fulfill this mitzvah:**

[www.temple-israel.org/Sisterhood](http://www.temple-israel.org/Sisterhood)



## PASSOVER CANDY SALE

We are pleased to offer Barton's Kosher for Passover candy and a second (non-Passover) catalog featuring "Gifts & Treats" for your kitchen and home. All are perfect for your own holiday table or as gifts. **Deadline to order is 3/17.**

**For more info and to place your order:**

[www.temple-israel.org/Sisterhood](http://www.temple-israel.org/Sisterhood)



## WOTI WOMEN'S FREEDOM SEDER

Tuesday, April 9 • 6pm at Temple Israel

Join our female clergy as we celebrate Passover with a Seder focusing on Women's Reproductive Rights. Bring your friends for a moving, educational experience. Cost is \$36/person. **For more information and to register:**

[www.temple-israel.org/event/FreedomSeder24](http://www.temple-israel.org/event/FreedomSeder24) by 4/1.

Questions? Contact Andi Weiss at [awsisterhood@gmail.com](mailto:awsisterhood@gmail.com)



## Calendar of Events:

4/17   Holocaust Center	4/17   Holocaust Center
3/6   General Board Meeting	5/1   General Board Meeting
3/14   Mahj Tournament	Save the dates:
3/18   Mishloach Manot packing	5/15   Bingo at Fleischman
3/20   Bingo at Fleischman	5/16   Installation Luncheon
4/3   General Board Meeting	5/30-6/2   WRJ Conference in New Orleans
4/9   Women's Freedom Seder	6/2   Spring Boutiques
4/16   Election Dinner	6/5   House Tour
4/17   Bingo at Fleischman	

# LIFE CYCLE EVENTS

## B'MITZVAH

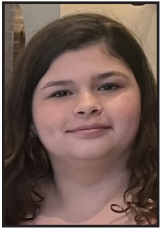
**FRIDAY, MARCH 1, 2024**



**ARI JACOB MOSS**, son of Nicole and Marc Moss; grandchild of Danielle and Stuart Leff, and Marsha and Jerry Moss. Ari is a student at South Hills Middle School. He enjoys gaming, swimming, bike riding, and playing saxophone in the school band. He also likes spending time with his friends and

family. For his mitzvah projects, Ari volunteered at Temple Israel's Labor Day Picnic and with QUEST, raking leaves for JARC. His most meaningful mitzvah project was creating care packages for the residents at Jewish Senior Life.

**SATURDAY, MARCH 2, 2024**



**SYDNEY SCHEINKER**, daughter of Erica and Aaron Scheinker; grandchild of Emily and Henry Khinchuk, and Marsha and Barry Levine. Sydney is a student at Walnut Creek Middle School. She enjoys ice skating, skiing, volleyball, art, dancing, singing and theater. For one of her mitzvah projects, Sydney

participated in Temple Israel's QUEST Charity Chili Challenge making meals for those in need. Her most meaningful mitzvah project was volunteering her time with the elderly at Jewish Senior Life.

**FRIDAY, MARCH 8, 2024**

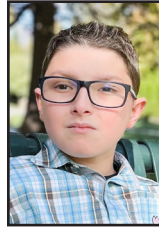
**JACOB MAXWELL BEN**, son of Meredith and Joshua Ben;



grandchild of Barbara and Allan Ben, and Marilyn and Michael Rice. Jacob is a student at Walnut Creek Middle School. He enjoys robotics, theater, piano and reading. He is also involved in yearbook and student council. For his mitzvah projects, Jacob

helped with the Temple Israel Labor Day picnic and volunteered for the Pleasant Lake Elementary School's play as an assistant director. His most meaningful mitzvah project was starting a book drive for Making Spirits Bright, an organization that collects and distributes gently used books to communities in need.

**SATURDAY, MARCH 9, 2024**



**MAXWELL STOCKERMANN**, son of Julie Stocker and Eric Mann; grandchild of Margo and Michael Stocker, and Marge and Fred Mann.

Max is a student at Norup International School.

His hobbies include spending summers at Camp Tamarack, camping up north with his family,

swimming, tennis, soccer, playing video games, anime, reading, and caring for animals. For his mitzvah projects, Max delivered food and gifts to children in need during Detroit Mitzvah Day and volunteered with a local animal rescue organization. His most meaningful mitzvah project was making blankets for the children at Camp Joy Outdoor Education Center, a camp designed specifically for families living with Eosinophilic disease, and a place where Max received a blanket when he was a camper.



**BENNIE REMNER**, son of Gayle and Justin Remner; grandchild of Ellen Dorshow-Gordon and Charles Gordon, and Leslie and George Remner.

Bennie is a student at Clifford H. Smart Middle School. He enjoys baseball, Boy Scouts, storytelling category for competitive forensics, reading, bike

riding, and spending time with friends. He is a CIT at Skull Island Camp in White Lake Township, and in school, Bennie is part of the kindness crew, school newspaper, student council and religious diversity journeys. In addition to volunteering with Temple Israel during Lighthouse Week, creating and assembling holiday gift bags for senior living facilities, and organizing donations for Hospitality House, Bennie's most meaningful mitzvah project was volunteering his time at a JARC home and raising money to donate to those individuals with developmental disabilities of all ages in Oakland County.

**SATURDAY, MARCH 16, 2024**

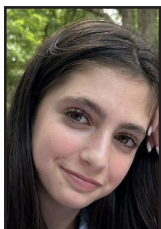


**MORGAN ROSE MURAV**, daughter of Randi Murav and Joel Murav; grandchild of Susan and Joe Brennan, Nancy and Ron Holton, and Robin Tobin-Murav and Avery Murav; great-grandchild of Helen Barnett. Morgan is a student at Clifford H. Smart Middle School. She enjoys tennis, coloring,

babysitting, activities with friends, and spending time with her dogs. In addition to volunteering with Temple Israel's QUEST program raking leaves at JARC, Morgan's most meaningful mitzvah project was volunteering at Friendship Circle, where she spent time forming lasting friendships with children who have special needs.



## SATURDAY, APRIL 13, 2024



**NATALIE GRACE ADELMAN**, daughter of Karen and Eric Adelman; grandchild of Ellen and Cary Adelman, and Sofia and Reuven Urman. Natalie is a student at Warner Middle School. Her hobbies include theater, singing and playing volleyball. In addition to volunteering with Bookstock and tutoring students at school, Natalie's most meaningful mitzvah project was volunteering each week at Fleischman Residence in West Bloomfield.

## SATURDAY, APRIL 13, 2024



**MADALYN ANNE KANNER**, daughter of Adina and Gregg Kanner; grandchild of Leslie and Dr. Jeffrey London, and Marcia and Rick Kanner. Madalyn is an honor roll student at James R. Geisler Middle School. She loves theater, singing, is in the newspaper club at school, and plays percussion in the band. She also enjoys spending time with her friends and family. For her mitzvah projects, Madalyn donated baked cookies and volunteered with Temple Israel's Fresh Food Pantry. She also organized a restaurant fundraiser for the Crohn's & Colitis Foundation. Madalyn's most meaningful mitzvah project was volunteering with Almost Home Animal Rescue where she put together foster folders, organized adoption kits and arranged collars and dog tags in preparation for dogs to be fostered.

## SATURDAY, APRIL 20, 2024



**ETHAN ZANE BOCKNEK**, son of Erika and Andy Bocknek; grandchild of Cheryl and Marc Bocknek, and Retta and Mark London. Ethan is a student at Roeper Middle School. He loves sports, especially baseball, and plays basketball on his school team. A music lover too, Ethan plays guitar and the drums, and enjoys spending time with his friends and family. For his mitzvah projects, Ethan has a long-standing relationship with Brilliant Detroit where he participates in ongoing service projects. He also volunteers his time baking challah on Sundays at Temple Israel for Fresh Food Pantry. Deeply committed to his community, Ethan's most meaningful mitzvah project is working with the clergy and staff at Temple Israel to develop new programs for kids his age that focus on intercultural and interfaith dialogue.

## SATURDAY, APRIL 20, 2024



**ELIZA LEAH ELKIN**, daughter of Mila and Ilya Elkin; grandchild of Isabella and Mark Kostyukovsky, and Irina and Gregory Elkin; great-grandchild of Leon Kostyukovsky and Larsia Soybel. Eliza is a student at Walnut Creek Middle School. She enjoys skiing and dancing. For her mitzvah projects, Eliza volunteered at Friendship Circle and Temple Israel's QUEST bake-off. Her most meaningful mitzvah project was donating funds to HIAS, the Hebrew Immigrant Aid Society; an organization that provides humanitarian aid and assistance to refugees. This was extremely meaningful to Eliza, as HIAS helped her family immigrate from the Soviet Union to the US.

## TEMPLE FAMILY

### Births

**Ari George Borkin**, son of Drs. Stephanie and Michael Borkin; grandchild of Andee & Ken Marcus and Bobbie & Mark Borkin.

**Blake Robert Zeman**, son of Lizzy & Josh Zeman; grandson of Marci & Paul Zeman and Ann & Jonathan Podolsky; great-grandson of Ruth Tobias.

### Weddings

**Roxana Cocariu**, daughter of Stela Carsote and Ilie Cocariu, to **Bradley Dean Jerris**, son of Rebecca & Clayton Jerris.

### In Memoriam

**Melvin "Mel" Frederick Annis**, husband of Patricia Cornett and Helen Annis z"l; father of David (Andrea Bozoki) Annis and Ethan (Amy Washburn) Annis; brother of Byron (Susan) Annis and Sheldon Annis z"l; uncle of Bradley, Charles, Pearl, Rose, Molly and Allison; friend of Harriet Gelfond, Michael Yurgalite, William Sverdlik, Malka Subrin, and Kenneth Leavitt.

**Ram Armon**, husband of Carol Armon; father of Oren Armon, Eyal Armon, Guy (Nurit) Armon, Dana (Brian) Seidel, and Gil Armon; grandfather of Emily and Hailey Armon, and Ronan and Raphael Seidel; brother of Mossi (Michal) Armon; brother-in-law of Elizabeth (Dana) Gulick.

**Rita Barish**, wife of Sidney Barish; mother of Shelli (partner, Harold Etkin) Feinberg, Jody (Jeff) Hersh, Dr. Ryan (Jennifer "Jen") Barish, and Cindy Shifman z"l; mother-in-law of Stewart Shifman; grandmother of Maxwell "Max" and Blake Barish, Joshua (Jess Brecker) Feinberg, Samantha (Matthew) Abeles, Jordan Fishman, Zachary (Ashley) Shifman, Stefani Greenspan, and Carly (Matthew) Monheit; great-grandmother of Dylan Feinberg, Ashton and Avery Abeles, Ariel, Moshe and Golda Fishman, and Jayden Monheit; sister of Sidney Fershtman z"l, Sylvia Fox z"l, Norman Fershtman z"l and Herman Fershtman z"l; sister-in-law of Harriet Barish.

**Phyllis Bean**, wife of Edwin S. Bean z"l; mother of Debra (James) Gordon, A. Jeffrey (Jacqueline) Bean, David (Missy) Bean and Andrew (Jody) Bean; grandmother of Alexandra (Andrew) Sherman, Max (Rachael) Gordon, Justin (Emily) Bean, Jesse (Aja) Bean, Jaime (Ethan Rubin) Rubin-Bean, Jake (Pamela) Gordon, Samuel (Kiki) Gordon, Maya Edery, Adam Edery, Annabel Bean, Jillian (Shawn) Greco and Adam Bean; great-grandmother of Bo, Maude, Zeke, Hank, Leonard, Zora, Desmond, Esther, Lillian and Benjamin.

**Amy Berke**, wife of Dr. Joseph Berke; mother of Matthew (Karen) Turner, Kelli Turner, Rachel (John) Schreiber, Jason (Stephanie) Berke, and the late Richard Berke; mother-in-law of Shella Berke; grandmother of Luca Turner, Mia and Eli Turner, Evan and Emily Ostrander, Hayden Schreiber, Johnny and Gina Gould, and Jonah Berke; sister of Judy Feder z"l; daughter of Dr. Elliott z"l and Evelyn z"l Glicksberg.

**Neal Marc Charness**, husband of Amy Charness; father of Zoe Charness and Noah Charness; brother of Gary (Wendy) Charness and Eugene (Leslee) Charness; brother-in-law of Randee (Henry Mendell) Trabit and Sue (Michael) Musson; son of Benjamin z"l and Florence z"l Charness.

**John Dreifus**, husband of Marion Dreifus z"l and Suzanne Dreifus z"l; father of Jay (Kathy) Dreifus, Peter (Patti) Dreifus, Milton (Lisa) Feldberg, and Eric Shugerman z"l; father-in-law of Kathy Shugerman and Laurie Shugerman; grandfather of Tom ("Jenny" Jennifer) Berman, Ryan (Stacie) Berman, Rabbi Jeff (Rachael Brill) Dreifus, Gregory (Maya) Dreifus, Samantha Dreifus, Ari Feldberg, Emma Feldberg, David (Lindsay) Shugerman, and Brandon (Lauren) Shugerman; great-grandfather of Alexis "Lexi" and Olivia Berman, Sloane and Morgan Berman, Shoshana Dreifus, Victor and Aria Dreifus, and Lynnlea and Laynie Shugerman.

**Bobbi Dunn**, wife of Sol Dunn; mother of Debby (Dan) Stricof and Karen L. (Katya Moorman) Dunn; grandmother of Jared (Amanda) Stricof and Michael (Daniela) Stricof; great-grandmother of Bryn, Piper, Sloane, and Adam Stricof; sister-in-law of Irving (Dorothy) Dunn and Deanna (Freddie z"l) Averbuch z"l; aunt of Amy Dunn, Michele (Ahron) Zygman, Carol (Barry) Sacher, and Marc (Jan) Dunn; cousin of Eric Billes.

**Rita Faudman**, wife of Arnold Faudman z"l; mother of Carol (Mark) Antman, Barbara (Steven) Wolk, Lila (Robert) Trussler, David (Jessica Hall) Faudman and Brian Faudman; grandmother of Natanya (Lake) O'Donnell, Philip Antman, Shayna (Alex) Carlson, Jay (Eszter) Wolk, Hanna (Derrick) Patton, Lucas Faudman and Andrew Trussler z"l; great-grandmother of Benjamin Logan Wolk, Lana Rose O'Donnell and Emilia Mae O'Donnell; sister of Beverly Sabbath.

**Arnie Fisher**, husband of Lorraine Fisher; father of Bruce (Laurie) Fisher, Carol (Sandy) Vieder, and Jay (Lisa) Fisher; grandfather of Brandon and Meryl Vieder, Adam Fisher, Alex Vieder, Kaitlin Fisher, Ben Fisher, Nikolas Vieder, Jessica Fisher, and Daniel Fisher; great-grandfather of Logan Vieder; son of Joe z"l and Flora z"l Fisher; brother of Karen Sicherman z"l and Nancy Fox z"l.

**David Frank**, husband of Beverly Frank; father of Caroline Stauss and Samuel J. Frank; father-in-law of Kelly Frank; grandfather of Noah (Brianna Mark) Stauss, Jeremy (Ari Mendelson) Stauss, Lena Frank, Josephine Frank, and Leo Frank; great-grandfather of Sawyer Monroe Stauss; brother of Benjamin Frank z"l and Alan Frank z"l; brother-in-law of Betty Makowski Meltzer; uncle of Katherine "Katie" ("Steve" Steven) Jacob, John (Marie) Frank, Jo (Norman z"l) Goodman, Michael (Elaine) Trotz, and Karen (Phil) Sterman; friend of Beba Miranovic, Alice and James Forrest, and Shelly Hoffman.

**Ross Fridson**, husband of Carol Fridson; father of Amy ("J.J." Jon) Reifler and Lisa ("Rick" Richard) Rubenfaer; grandfather of "Madi" Madison and Morgan Reifler, and Mason and Blake Rubenfaer; brother of "Marge" Marjorie ("Harry" Harold) Weinhaus; brother-in-law of Cathy Lichtig; uncle of "Matt" Matthew Weinhaus and Jaime (Brett) Wilensky; son of Harry "Fritz" z"l and Alice z"l Fridson; also survived by Judy Fridson, and Judy's children, Carol (Jeffrey) Resnick, Kathy (Dr. Michael) Laffer, and Steven Snyder.

**Edith Gertsmark**, wife of Aleksandr Gertsmark z"l; mother of Diana (David) Brown and Rebecca (Ben) Oren; grandmother of Ian, Isabella and Dean Brown, and Nina, Wyatt and Reese Oren; sister of Astrida (Yuriy) Chikhalenko z"l.

**Sheldon Arthur Goldman**, husband of Rose Rita Goldman; father of Ilyse Goldman (Sanford) Aaron and Andrea Goldman (David) Jacobson; grandfather of Sophia Aaron, Alex Aaron, Lillian Beavers, Jack Beavers, Danielle (Zach Mettel, fiancé) Jacobson and Jenna Jacobson; brother of Martin Goldman; son of Seymour z"l and Martha z"l (Katz) Goldman.

**Evelyn Gorge**, wife of Benoit Gorge z"l; mother of Michael (Wendy) Gorge, and Karen z"l and Marshal z"l Gorge; grandmother of Matthew Gorge, Brandon (Emily) Gorge, and Gillian (Daniel Carr) Gorge; great-grandmother of Charlotte Carr, Jackson Carr, Isla Carr, Benjamin Gorge, and Maxwell Gorge; sister of Marilyn (Michael) Rice and Bernard (Jane) Guyer; sister-in-law of Sal (Nancy) Gorge.



**Fred Kamienny**, husband of Elaine Kamienny, and Ricki Becker; companion of Lorraine Applebaum; father of Howard Andrew z"l, Shari Kamienny Cohen (Harry) and Laura Kamienny; step-father of Adam (Jodi) Becker and Nancy Bennett; grandfather of Hannah and Maya Cohen, Eric, Ryan, and Ellory Becker, and Sloane and Shoshana Bennett; brother of Janice "Jan" (Barry) Kelman; son of Helen z"l and Edward z"l Kamienny.

**Elaine Rubach Klein**, wife of Edward Klein z"l; mother of Diane Klein (Matthew Moore), and Jimmy Klein z"l; sister of Stanford Rubach z"l (Jackie George), Charlotte (Marvin z"l) DeRoven z"l, and Irene (David z"l) Anbender z"l; aunt of Gail (Jack z"l) Warren, Nancy DeRoven, Amy (Scott) Friedman, Arlene Rubach (Scott Jones), Claire Rubach (Wendy Baxter), and Julie Anbender (Brian Hurley); daughter of Jean z"l and Arnor z"l Rubach.

**Harvey Kline**, husband of Eleanor Kline; father of Glenn (Rhonda) and Lynn (former spouse, Powell); grandfather of Baer, Spencer, Hannah, Liah and Katie; brother of Sheila (Maurice z"l) and Linda z"l (Rich).

**Sanford J. Marks**, husband of Karen Marks; father of Jennifer (John) Helner, Lisa (Matt) Dublin, and Michael Marks; grandfather of Maria Helner, Samantha Helner, Asher Dublin, and Avery Dublin; brother of Sharron Marks.

**Daniel "Dan" Pikstein**, husband of Ronnie Pikstein z"l; father of Marla (Joshua) Linderman-Richelew, Jason (Christine) Pikstein and Adam Mitchel; grandfather of Zenah (Jonathan) Skidmore, Yakirah Mitchel, Naomi Richelew, Joshua Linderman, Avivah Mitchel and Jonathan Pikstein.

**Jeanette Pomish**, wife of Irving Pomish z"l; mother of Morrine (Steven) Maltzman, Lisa (Robert) Juhasz, and Craig (Sara) Pomish; grandmother of Rachel (Steven) Massimilla, Andrea (Michael) Gentile, Daniel Silverman, Morgan Pomish and Ethan (Brittany) Pomish; great-grandmother of Kyle, Kailyn, Gianna, Michael and Oliver; former mother-in-law of John Bellaver and Geoff Silverman.

**Dr. J. Barry Rubin**, husband of Carol Kaftan Rubin and Debra Rubin z"l; father of Scott (Dr. Beth) Rubin, Jeffrey and Marla Kaftan, Lori Kaftan, Nicole Rubin, Laura and Scott Dresner, Suzanne and Greg Shulman, and Louie and Julie Rubin; grandfather of Jake and Eli Rubin, Elliot, Amelia, and Asher Kaftan, Brooks and Quinn Barron, Jason Shulman z"l, Brandon and Erin Shulman, Alison Shulman and Mark Little, Emily and Adam Rubin, and Austin, Jordyn, and Alexa Dresner; great-grandfather of Ryan Shulman; brother of Sandra "Sandy" and Dr. Martin Tessler, and Dr. Michael and Roz Rubin.

**Barbara Rubenstein**, wife of Ralph Rubenstein; mother of Dr. Laura (Dr. Frank) Borschke, Dr. Ronald (Missy) Rubenstein, and Dr. Mara (Frank Burks) Rubenstein; grandmother of Benjamin,

Aubrey, and Ethan Borschke, Mia, Ryan, and Rhys Rubenstein, and Maxwell Burks; sister of Dr. Richard (Beverly) Bernstein; sister-in-law of Rubin Rubenstein z"l and Ernest (Elaine z"l) Rubenstein z"l; daughter of Elsie z"l and Irving z"l Bernstein.

**Joel Shore**, husband of Marilyn Shore; father of Gayle Shore Moyer and Bruce Shore Moyer, Karen Shore Wisialowski and William Wisialowski, and Michael and Sally Beth Shore; grandfather of Alex (Elyse) Moyer, Justin (Lara Robeznieks) Moyer, John Benjamin Wisialowski, Sarah Jayne Wisialowski, Rachel Carson Shore, Noah Fisher Shore, and Amelia Rose Shore; great-grandfather of Callie and Blake Moyer; brother of Stanley (Marlene z"l) Schusterman z"l; brother-in-law of Sylvia z"l, Florence z"l, Aaron z"l, and Dorothy z"l.

**Lisa Simon**, wife of David Simon; mother of Dr. Joshua (Arielle) Simon and Jeffrey Simon; sister of Marc (Debbie) Shepard and Alan (Debbie) Shepard; sister-in-law of Anne (Simon) and Stephen Riegel, and John Simon; daughter of Sally and Elliott z"l Shepard; daughter-in-law of Sharon (Simon) Walts.

**Karen Tenenbaum**, wife of Larry Tenenbaum; mother of Allison Rosenzweig and Stacie Dubnoff; sister of Rich and Steve Weinstein; aunt of Jamie (Benjamin "Ben") Blinder.

**Barbara Weintraub**, wife of Dr. Burton Weintraub z"l; mother of Julie (Frank) Witt, Bruce (Shari) Weintraub, and Jason (Cynthia) Weintraub; grandmother of Samantha and Brandon Witt, Emma Weintraub, Matt Weintraub, Aaron Weintraub, and Alyssa Weintraub; sister of Dr. Jack Kaufman z"l and Doreen (Harold z"l) Saperstein z"l; sister-in-law of Elaine Kaufman and Mona (Kieve z"l) Ehrlich; daughter of Celia z"l and Benjamin z"l Kaufman.

## TRIBUTES

### ADMINISTRATOR'S DISCRETIONARY FUND

*For charitable purposes.*

*In Honor Of:*

Mazel Tov on the 30th wedding anniversary of Marci Grossman Lempert and Mark Lempert – Yolanda and David Tisdale  
In appreciation of Jason Plotkin – Rose Rosenblatt; Alison and Micheal Weinhaus

*In Memory Of:*

Phyllis Bean – Amy and Stuart Brody; Cheryl Guyer; Jill Guz; Wendy Handler; Lisa and Larry Rich; Amy and Craig Singer; Ada and Howard Yerman  
Nathan Peiss – Beverly Price

*Marking Yahrzeit Of:*

Leatrice Goodwin – Scott Goodwin  
Michael Morton – Marcy and John Fikany

### ADULT ISRAEL PILGRIMAGE FUND

*Supports Temple Israel pilgrimages to Israel for adults.*

*In Memory Of:*

Phyllis Bean – Caren Smith

### GEORGE & SHIRLEY AGREE CARING COMMUNITY FUND

*Provides birthday parties for residents of nursing homes, orphanages, and shelters.*

In Memory Of:

Bruce Colton – Arlene and Rick Agree

Barry Rubin – Jodi and Kevin Neff

### APPEL FAMILY CONCERT FUND

*Provides funding for an Annual Music Program.*

In Honor Of:

In appreciation of Marci Shulman – Scott Roubeck

In Memory Of:

Bruce Colton; David Frank – Beth and Sidney Feldman

### DONNA & ALLAN APPLE FUND FOR CHILDREN WITH SPECIAL NEEDS

*Provides madrachim support for children with special needs.*

In Honor Of:

Wishing a speedy recovery of Bob Bialos; Mazel Tov on the Bat Mitzvah of Brooke – Donna and Allan Apple

Mazel Tov on the 60th wedding anniversary of Nira and Bob Slutsky – Lorry and Jerry Cooper; Allan Gurvitz; Mickey and Cal Mackey

Mazel Tov on the 60th wedding anniversary of Shelly and Howie

Jacobs – Lorry and Jerry Cooper

In Memory Of:

Rhoda Cantor; Barbara Weinstein – Donna and Allan Apple

### SUSIE F. ARNOLD EDUCATION AND CHOIR FUND

*Provides funding for education and the Shabbat Singers Choir.*

In Memory Of:

Philip Arnold; Reena Arnold – Beth and David Kirschner & Family

### FINE ARTS FUND

*Supports the purchases of fine art at Temple Israel.*

In Memory Of:

Mitzi Jacobs – Andrea and Robert Levy

Leonard Lemberg – Corrine Lemberg

### DONNA & ALAN ASP EMERGENCY ASSISTANCE FUND

*Provides emergency assistance to Temple Israel members in crisis.*

In Honor Of:

In appreciation of Donna & Alan Asp Emergency Assistance Fund – Donna and Alan Asp

### MIRIAM & DR. ISAAC BARR ISRAEL EDUCATION FUND

*To preserve the legacy of Miriam (Miri) Barr (Mania Lieder), a Holocaust survivor and, by inference, the Holocaust Jewish experience. She believed: 1. Israel is the core of Jewish existence, 2. Antisemitism must be challenged, 3. We must be proud of our Jewish heritage and teach to respect our history and core values.*

In Memory Of:

Phyllis Bean – Michal and Jonathan Firsht

### MARY LOU & GARY BERNDT MINYAN FUND

*Supports minyans at Temple Israel.*

In Honor Of:

In appreciation of Temple Israel Clergy and Staff – Theresa and Jeffrey Levitt

### BARBARA & DOUGLAS BLOOM SPECIAL NEEDS FUND FOR SINGLE MOTHERS

*Provides assistance to single moms in crisis who are Temple Israel members.*

In Honor Of:

Mazel Tov on the special birthday of Barbara Bloom – Sarah Gottlieb

### PHYLLIS & DR. GERALD z"l BRICKNER FAMILY "QUEST" FUND

*Provides funding for QUEST programming.*

In Honor Of:

Mazel Tov on the 95th birthday of Phyllis Brickner – Sherrie and Norty Stern

In Memory Of:

Mitzi Jacobs; Marty Rott – Julie and Billy Stern

### MARLENE BUDMAN REMEMBRANCE GARDEN FUND

*Plants spring flowers annually on the grounds of Temple Israel.*

In Honor Of:

Mazel Tov on the engagement of Ellen and Danny – Ellen and Marc Whitefield

### COURTNEY LISA CANTOR z"l ISRAEL TRAVEL SCHOLARSHIP FUND

*Provides funds for youth travel to Israel.*

In Honor Of:

Mazel Tov on the Bar Mitzvah of Bradley – Cheryl and Marc Bocknek

### CANTORS' DISCRETIONARY FUND

*For charitable purposes.*

In Honor Of:

Mazel Tov on the 52nd wedding anniversary of Brenda and Mark Altus – Altus Family

In appreciation of Cantor Neil Michaels – Andrea and David Siegel & Marissa and Jake Katzman

In appreciation of Cantor Michael Smolash – Karen and Joshua Berris

In Memory Of:

James Fahey; Harry Trivax – Andrea and David Trivax

Harvey Kline – Eileen Bradley

Beloved Sister of Mark Kotler & Family – Pam Silberman

Marking Yahrzeit Of:

Marty Fingeroot; Helen Shanteau – Susan and John Shanteau

Dr. William Silverstone – Dr. Michael Silverstone

### CARING COMMUNITY FUND

*Supports the programs of Temple Israel's Caring Community.*

In Honor Of:

Mazel Tov on the marriage of Brittany and Sam – Caryn and Harold Rothenberg

In celebration of your 75th birthday Richard Levine – Susan and Stuart Levine

Mazel Tov on the 80th birthday of Marlene Rosen – Carolyn and Steven Marks

In Memory Of:

Phyllis Bean – Ronna and Stuart Gold; Rita Neff; Sherrie and Norty Stern

Bruce Colton; Evelyn Gorge; Shirlee Stern; Marilyn Weiss – Dr. Amy Marks & Family; Carolyn and Steven Marks

Arnie Fisher – Dr. Amy Marks & Family; Carolyn and Steven Marks

Ross Fridson – Carolyn and Steven Marks; Barbara and Irving Tukel

Dr. Herbert "Doc" Goodwin; Jane Guyer – Carolyn and Steven Marks

Sanford J. Marks – Carolyn and Steven Marks; Sherrie and Norty Stern

Sandi Millman; Dr. Lawrence Newman – Caryn and Harold Rothenberg

Mitchell Shiffman – Gail Young

Marking Yahrzeit Of:

Eddie Mitteldorf – Shelly Kraft

### JOSEPHINE & HARRY COLTON SHABBAT B'YACHAD AND COLLEGE FUND

*Provides a "First Shabbat" dinner to families of newborn or adopted children and college packages.*

In Memory Of:

Bruce Colton; Marilyn Weiss – Amy and Jason Brooks; Didi and Richard Colton

Sheldon Goldman; Hadley Wine – Didi and Richard Colton

Richard Popper; Gerald Tauber – Amy and Jason Brooks

### CONCERT/LECTURE FUND OF TEMPLE ISRAEL

*Assists in the support of concerts and lectures at Temple Israel.*

In Honor Of:

In appreciation of Cantor Neil Michaels; In appreciation of Cantor Michael Smolash – Julie and Larry August; Ida and Lou Goutman

In Memory Of:

Phyllis Bean – Andi and Jay Levin

Mitchell Shiffman – Janet and Allan Jacobs



#### ARTHUR DUBIN CHILDREN'S SPECIAL NEEDS SCHOOL FUND

*Aids families with children with special needs.*

In Honor Of:

Mazel Tov on the 95th birthday of Eleanor Meyers – Art Dubin and Howard Dubin

In Memory Of:

Sharon Abramowitz – Tyner Religious School Staff

Sara Chaben; Theodore Fogel; Samuel Marx; Theodore Moss – Marilyn and Richard Moss

Bruce Colton; Sheldon Goldman; Barry Rubin – Howard Dubin and Art Dubin

Arnie Fisher – Howard Dubin and Art Dubin; Bill Rosen

Richard S. Goodman – Carmen Biederman

Efim "Fima" Khankin – Bill Rosen & Family

Harvey Kline – Beverley and Dennis Wolgin

Marking Yahrzeit Of:

Robert Biederman – Carmen Biederman

Nat Fishman – Jayme Fishman

#### ZACHARY M. TALAN EDELSON MACCABI SCHOLARSHIP FUND

*Provides scholarships for Temple Israel Maccabi participants.*

In Memory Of:

Deborah Gussie DeRoven – Gail DeRoven Warren

John Dreifus – Sandy and Paul Schwartz

Gerry Goodman; Evelyn Gorge – Linda and Andy Jacob

Susan Greene Graham – Wendy Talan

#### GENERAL ENDOWMENT FUND

*Provides long term funding for Temple Israel.*

In Memory Of:

Saul Witenoff – Stephen Witenoff

#### AARON FENTON z"l MEMORIAL FUND

*Supports programming at Temple Israel.*

In Honor Of:

Mazel Tov to John and Caryn Gallop on the marriage of your children;

Mazel Tov to Kevah and Michele Conner on the marriage of your children;

Mazel Tov to Marc and Judy Samotny on the marriage of your children – Sheila and Mark Fenton

In Memory Of:

Gloria Flanzer; Michael Herzoff – Sheila and Mark Fenton

#### ANNE & EDWARD FIENMAN COLLEGE SCHOLARSHIP FUND

*Provides a college scholarship to a graduating senior from Temple Israel Religious School.*

Marking Yahrzeit Of:

Anne Fienman – Rosanne and Ben Fienman

#### DR. JOEL FORMAN FAMILY CHALLAH ROLL FUND

Marking Yahrzeit Of:

Dr. Joel Forman – Alizah and Adam Forman; Linda Forman

#### FLORENCE A. GELLER FOOD FOR THE NEEDY FUND

*Provides food for the needy.*

In Honor Of:

Mazel Tov on the special birthday of Phyllis Gurstell – Laura and Ron Miller

#### GENERAL GIFTS FUND

*Provides general financial support of Temple Israel.*

In Honor Of:

Mazel Tov on the Bat Mitzvah of Brooke – Sue Gershonowicz

Mazel Tov on the special birthday of Idene Fink – Sabra Shekter

In honor of Karen and Bruce Gilbert & Family – Wendy and Robert Winnick

In appreciation of Temple Israel Clergy and Staff – Daniel Lee; Jack Lockman; Randy Yavitz

In Memory Of:

Phyllis Bean – Miriam and Ron Bergman; Stephanie and Jarrett Weinberger

Ross Fridson – Joanne and Robert Kraft

Janice Ruth Katz – Lori and Mark Epstein & Family

Stella Morof – Mr. and Mrs. J. Thomas MacFarlane; Sabra Shekter

#### DR. FREDRIC z"l & LINDA GOLD NEWLYWED MEZUZAH FUND

*Provides a new Mezuzah and scroll to all newlywed couples blessed by our rabbis.*

In Memory Of:

Robert DeRoven – Linda Gold

#### GOODMAN FAMILY JUDAICA MUSEUM FUND

*Provides funding for the Temple Israel Judaica Museum and its programs.*

In Memory Of:

Bruce Colton; Sheldon Goldman – Teri Goodman

Jerry Korcheck – Nancy and Mark Morganroth

#### DAVID & STACY GORDON FAMILY "DO GOOD FUND"

*Supports programming at Temple Israel that benefits the greater good of our community geared toward social action endeavors.*

In Memory Of:

Phyllis Bean – Lori, Michael, Andrew and Allie and Amie Fullett

#### STEVEN GOTLIB MEMORIAL FUND

*Supports our annual Housing the Homeless project.*

In Honor Of:

Mazel Tov on the Bat Mitzvah of Cayla – Linda Weiss and Mark Mellen

In Memory Of:

Ross Fridson – Sylvia and Michael Gotlib

#### HAROLD GOTTLIEB CAMP TAMARACK SCHOLARSHIP FUND

*Provides need-based campership for Temple Israel children attending Camp Tamarack.*

In Honor Of:

Mazel Tov on your special birthday Irv Friedman – Sarah Gottlieb

In Memory Of:

Barbara Keidan; Herbert S. Keidan – Karen Keidan Myerson & Family

Marking Yahrzeit Of:

Helen Shanteau – Susan and John Shanteau

#### STEPHEN GOTTLIEB z"l MEMORIAL ENDOWMENT FUND

*Supports Temple Israel music programs.*

Marking Yahrzeit Of:

David Gottlieb – Sarah Gottlieb

#### AVIVA PEARL HERMAN z"l MEMORIAL SHARE FUND

*Provides support to those who have experienced miscarriage, stillbirth, or infant loss.*

In Honor Of:

Mazel Tov on the retirement of David Gad-Harf – Cheryl and Marc Bocknek

In appreciation of Rabbi Jennifer Kaluzny – Shelley Chaness

In celebration of the new home of Pam and Ken – Merle and Ron Schwartz

In appreciation of Merle and Ron Schwartz – Shelley and Dennis Kash

In Memory Of:

Bob Slone – Frida Markle

Marking Yahrzeit Of:

Aviva Pearl Herman – Merle and Ron Schwartz & Family

#### LOIS & FRED HOWARD MEZUZAH OUTREACH PROGRAM FUND

*Supplies Jewish ritual items for the Jewish Personal Trainer Program which serves our congregational homes.*

In Memory Of:

Marilyn Davidson; Hadley Jeffrey Wine – Connie and Hal Schwartz

#### HUTTON FAMILY YOUTH GROUP FUND

*Provides non-budgeted goods, services and equipment to Temple Israel's High School youth activities.*

In Memory Of:

Rita Barish; Herbert Edelson; Arnie Fisher; Jerry Korchak; Beverly Siegel – Shelley and Dr. Lenny Hutton

Marking Yahrzeit Of:

Wilfred "Bill" McNabb – Norma Portney Sugar

#### IWREY FAMILY SPECIAL NEEDS FUND

*Provides senior programming, transportation and other special needs.*

In Memory Of:

Phyllis Bean – Ellen Busch and Steven Stearn  
Herbert Edelson – Alvin Iwrey and Marcia Kahn

#### LES & BOB IWREY CHILDREN'S BEDTIME RITUAL FUND OF TEMPLE ISRAEL

*Supplies bookplates, tapes and CDs to families attending a Bedtime Ritual Program.*

In Honor Of:

In honor of Talia Mollie Hoffman – Les and Bob Iwrey

In Memory Of:

Jean Sugar – Les and Bob Iwrey & Family

#### LINDA & MARK JACOBS FAMILY FUND

*Supports Israel scholarships and audio-visual technology for Temple Israel.*

In Memory Of:

Mitzi Jacobs – Marie and Saul Kravacas

#### STEPHAN ROSENBERGER KANDEL NURSERY FUND

*Supports ECC programming and provides bereavement books for bereaved parents.*

In Memory Of:

Reena Arnold – Danielle and Jeffrey Kalt  
Stephan Rosenberger Kandel – Edee and Larry Sands

Marking Yahrzeit Of:

Stephan Rosenberger Kandel – Renee and Mark Feinberg

#### HARRY & PHYLLIS KELLMAN MEMORIAL FUND

*Supports senior programming at Temple Israel.*

In Honor Of:

Mazel Tov on the 90th birthday of Betty Stone – Phyllis and Harvey Shapiro

In Memory Of:

Ross Fridson – Barbara Safran

#### BERTHA & HARRY KIFFERSTEIN SENIOR ADULT PROGRAMMING FUND

*Supports senior programming at Temple Israel.*

In Honor Of:

Wishing a speedy recovery of Neil Biederman; Mazel Tov on the Bat Mitzvah of Ella Davis – Marsha and Warren Kifferstein

In Memory Of:

Geraldine Chusid – Lisa Freedman  
Ira Willard Pike – Marsha and Warren Kifferstein

Marking Yahrzeit Of:

Harold Haas; Molly Haas; Bertha Kifferstein; Harry Kifferstein – Marsha and Warren Kifferstein

#### DR. DENNIS J. AND MILLY KOVAN MEMORIAL FUND

*Provides support to the annual Senior Expo to educate seniors and caregivers and promote active, healthy lives.*

In Honor Of:

Mazel Tov on the 60th wedding anniversary of Yetta and Paul Gluck – Phyllis and Harvey Shapiro

#### HARRY & SARAH LAKER MEMORIAL CONCERT FUND

*Provides Temple with a concert of music with Jewish content.*

In Honor Of:

In appreciation of Renee and Marty Laker – Carol Rubenfaer

#### JOSEPH & BESSIE LEBOWSKY NURSERY SCHOOL FUND

*Supplements toys, equipment and supplies used by the Nursery School.*

In Honor Of:

Mazel Tov on the Bar Mitzvah of Ely Levy – Bryna and Jeff Leib

In Memory Of:

Jerry Korchak; Barry Rubin – Bryna and Jeff Leib

#### LARRY LEVIN MEMORIAL SCHOLARSHIP FUND

*Provides a campership for a Temple Israel student for camp or other youth summer trips.*

In Honor Of:

Mazel Tov on the Bat Mitzvah of Brooke Jaffe – Rhoda Paull  
Mazel Tov on the 80th birthday of Dr. Freddy Weiner – Elaine and Mel Raznick  
Mazel Tov on the special birthday of Mel Raznick – Susan and Jeffrey LaKritz

In Memory Of:

Jerry Korchak – Carole Levin; Arlene Pierce & Family

#### SAMUEL TODD LEVINE BABY BOOK FUND

*Provides members or children of members with a baby book when their newborns are blessed at Temple Israel.*

In Honor Of:

Wishing a speedy recovery of Cary Goldberg – Yolanda and David Tisdale

#### LIBRARY FUND

*Supports Temple Israel libraries.*

In Honor Of:

Mazel Tov on the wedding of Hannah Blume – Debbie and Henry Gornbein

In Memory Of:

Fred Kamienny – Nancy and Nathan Kolender

Marking Yahrzeit Of:

Leona Kutlov – Elizabeth and Dana Gulick  
Audrey Cornfield Lacoﬀ – Ellen and Cary Adelman

#### ROSALYN LINER z"l & BARRY LINER z"l MEMORIAL FUND

*Funds scholarships for youth travel to Israel.*

In Memory Of:

Ross Fridson – Natalie and Sidney Blatnikoff  
Edith Gertsmark – Judy and Kent Siegel & Family

#### LIPSON FAMILY DAILY MINYAN FUND

*Assists in the expenses of the daily Minyan.*

In Honor Of:

In appreciation of Larry Miller; In appreciation of Carolyn Normandin – Carole Kaftan Rubin

In Memory Of:

Phyllis Bean – Charlotte Arbit  
Ferne Young – Debi and Larry Kaplan

#### SUSAN & RABBI HAROLD LOSS EARLY CHILDHOOD CENTER FUND

*Supports Early Childhood Center programming.*

In Honor Of:

Wishing a speedy recovery of Dr. Martin Karp – Yolanda and David Tisdale

In appreciation of Rabbi Harold and Susan Loss – Dolgin Family

In appreciation of Rabbi Harold Loss – Carole Kaftan Rubin

In appreciation of Susan Loss – Phyllis and Gary Levitt

In Memory Of:

Phyllis Bean – Jessica Weisman  
Ross Fridson – Judie and Ed Burnstein; Cindy and Murray Franklin  
Sheldon Goldman – Leslie, Jonathan, Sam, and Eddie Berlin  
Dolly Learner – Flora Goldfarb  
Sandi Millman – Suzy Rivkin & Family  
Barbara Rubenstein – Phyllis and Gary Levitt  
Harriet Soloman – Sue and Jerry Hoffman  
Cantor Henry Weintraub – Debbie and Larry Harwood  
David Samuel Weisman – Cindy and Murray Franklin  
Marilynn Weiss – Sheri and David Jaffa

Marking Yahrzeit Of:

Broncha Altus – Brenda and Mark Altus  
Max Kroot – Judie and Jerry Kroot  
Jennie Shiffman – Julie and Dr. Douglas Shiffman



#### LOUIS & LILY MARGOLIS FAMILY CHALLAH FUND

*Provides Challah to new members, and to those members returning home from the hospital or nursing care.*

*In Honor Of:*

Mazel Tov on the special birthday of Mel Clayton – Kendall and Phyllis Weeks

#### BARBARA AND JACK MILIN GIFT FUND

*Provides a gift to a Bar or Bat Mitzvah celebrant.*

*In Memory Of:*

Bruce Lawrence Colton; Marilynn Weiss – Barbara and Jack Milin

#### JUDITH & MARTIN z"l MILLER YOUTH FUND

*Provides funds for youth group participants to attend youth group events.*

*In Memory Of:*

Barbara B. Keidan; Herbert S. Keidan – Karen Keidan Myerson & Family

#### PEGGY & HARRY MILLER EARLY CHILDHOOD CENTER FUND

*Supports Early Childhood Center programming.*

*In Honor Of:*

Mazel Tov on the Bat Mitzvah of Mia Bernstein – Suzi and David Wiener

In appreciation of Larry Miller – Gloria Colton; Debra and James Gordon

*In Memory Of:*

Michael Herzoff – Suzi and David Wiener

Kenneth Ruben – Carole and Larry Miller; Margi and Danny Werber; Suzi and David Wiener

#### BARBARA & LAWRENCE MILLMAN FAMILY CHANUKAH FUND

*Provides holiday celebrations for those in need, through the Temple Israel No Temple Family Without A Chanukah Program.*

*In Honor Of:*

In appreciation of Joni and Jim Lesser – Barbara and Larry Millman  
Wishing You & Your Family A Healthy Chanukah Filled With Love, Laughter & Peace – Joel Abrams & Family; Ronni and Ken Boyer; Amy Brode & Family; Linda Dembs; Laurel and Stephen Epstein; Bobbi and Gary Feldman; Marcia and Stuart Felhandler; Barbara and Howard Goldt; Barbara and Barry Grant; Arlene Haber; Barbara and Ray Horenstein; Gail and Bob Kaplan; Carolyn Karp; Stacey and Olivia Karp; Molly and Bill Lawlor; Jennifer, Bill and Zachary LeGrand; Lisa and Jason Levine & Family; Mindy Levine; Susan and Rabbi Harold Loss; Daryle Roth and Jon Mafrice; Linda Marcus; Marsha and Neil Millman; Kerry and Howard Moskowitz; Marjorie and Morry Opperer; Rachel and Josh Opperer & Sons; Harriet and Neil Pepper & Family; Joan and David Raznick; Kim and Mike Raznick & Family; Madeline Dunn and Fred Raznick; Nancy and Alan Raznick; Carol and Matt Rosenthal; Leslie and Lynne Schultz; Simon Family; Judith and Ernie Simon; Karen and Eric Simon & Family; Linda and Mike Simon; Sherrie and Norty Stern; Beverley and Dennis Wolgin; Wendy and Rabbi Paul Yedwab – Barbara and Larry Millman

*In Memory Of:*

Bruce Colton – Harvey Miller

Sandi Millman – Barbara and Larry Millman

*Marking Yahrzeit Of:*

Joseph Grant – Barbara and Barry Grant

#### LYNN & GLENN MOVISH FAMILY YOUTH ISRAEL SCHOLARSHIP FUND

*Provides scholarships for the Teen Mission to Israel.*

*In Honor Of:*

In appreciation of Lynn & Glenn Movish Family Youth Israel Scholarship Fund – Lynn and Glenn Movish & Family

#### NEWMAN FAMILY FUND FOR LIBRARY PROGRAMS & RESOURCES

*Sponsors adult and children's book clubs, nursery school story hours, and a Jewish Book Fair.*

*In Memory Of:*

Dr. Mitchel Myerson – Karen Keidan Myerson & Family

#### ISAAC z"l & YETTA PANN BIKKUR CHAVERIM FUND

*Provides volunteer support and materials for visitation of home bound/nursing home individuals.*

*In Memory Of:*

Phyllis Bean – Cheryl and Dr. Marc Bocknek; Jodi and Dr. Kevin Neff; Yolanda and David Tisdale

Marilyn Davidson – Yetta Pann

Barry Rubin – Yolanda and David Tisdale

#### SCOTT DAVID PAZNER MEMORIAL SCHOLARSHIP FUND FOR SINGLE PARENTS

*Provides Temple Israel Religious School scholarships to single parent recipients.*

*In Memory Of:*

Rita Barish; Ross Fridson – Sher and Sandy Kaplan

#### PRAYER BOOK FUND

*Provides prayer books and other religious publications for Temple Israel use.*

*In Memory Of:*

Harry Sheres – Teri Goodman

#### KARI PROVIZER "LIFTING OUR FAMILIES FUND" FOR THE ROBERT SOSNICK FAMILY LIFE CENTER

*For use at the discretion of the Family Life Center Director to help families in crisis.*

*In Honor Of:*

Wishing a speedy recovery of Michael Curhan; Wishing a speedy recovery of Leah McMillan – Julie and Jason Levy & Family

Mazel Tov to Kari Provizer on 25 years at Temple Israel – Cheryl

Dworman & Family

In appreciation of Kari Provizer Lifting Our Families Fund – Lois Gerenraich, Robyn Canvasser, Brianna Stauss and Temple Israel Early Childhood Center Classroom 18

Mazel Tov on the special birthday of Dr. Milton Siegel – Janis and

Harvey Eisman

*In Memory Of:*

Phyllis Bean – Pam and Gary Greenspan; Linda and Jason Ishbia; Kari and Dr. Jeff Provizer

Morton Berkowitz; Jason Weiner – Marji and Harry Weinhaus

Arnie Fisher – Joan and Bill Bobee; Kari and Dr. Jeff Provizer & Family

Ross Fridson – Julie and Jason Levy & Family; Kari and Dr. Jeff

Provizer & Family

#### RABBIS' DISCRETIONARY FUND

*For charitable purposes.*

*In Honor Of:*

In appreciation of Rabbi Josh Bennett – Cortney and Seth Barnett;

Pamela Friedman; Elizabeth and Dana Gulick; Gail DeRoven Warren

In appreciation of Rabbi Marla Hornsten – Gail and Gary Ruby

In appreciation of Rabbi Jennifer Kaluzny – Karen and Joshua Berris;

Dr. Kimberly Hart and Dr. John Hart Jr.

In appreciation of Rabbi Harold Loss – Gloria Colton; Dr. Kimberly

Hart and Dr. John Hart Jr.

In celebration of the special of birthday Al Mahler – Jane Sterling

In appreciation of Temple Israel Clergy – Nancy and Howard Luckoff;

Barbara and Steven Tronstein

*In Memory Of:*

Irene Al-Azem – Elaine and Robert Sandy

John Anstandig; Rena Anstandig – Ms. Patricia Ernstrom and Mr.

Marshall Anstandig

Phyllis Bean – Edith Broida; Pam and Neil Friedman; Northstar Facility

Services; Lynne and Jeffrey Obron & Family; Karen and Bill Rubin;

Marcie and Marc Schechter

Amy Berke – Sandy Shepherd

Rhoda Cantor – Harriett Freedman and Suzanne Rivkin

Neil Carron – Merle and Charles Wolfson

Sherman Char – Dorie Wallace

Bruce Colton – Wendy and Jeffrey Roth; Merle and Charles Wolfson

Ross Fridson – Ruth Beresh; Hilary, Joel, Wendy, and Brian; Ellen and

Frank Wolff

Sheila Garber – Barbara and Edward Gudeman & Family  
 Sheldon Goldman – Wendy and Jeffrey Roth  
 Sandra Goldstein – David Bradford  
 Mitzi Jacobs – Brenda and Mark Altus  
 Janice Katz – Morof Family; Sandi Tuttleman  
 Sandra Millman – Harriett Freedman  
 Dennis Penner – Sharon and Ken Chupack  
 Carol Siemens – Harriett Freedman and Suzanne Rivkin  
 Rita Tepfer – Barbara Dubb  
 Marilyn Rhoda Weiss – Wendy and Jeffrey Roth

*Marking Yahrzeit Of:*

Barbara Frankel – Ronald Michalak  
 Allan Pearlman; Donna Pearlman; Sarah Pearlman – Judith and Sheldon Pearlman  
 Irv Shanbom – Andrea and David Siegel & Family  
 Shirley Siefman – Cynthia Siefman

#### **FAYE & DON REIFLER MEMORIAL YOUTH TRIP SCHOLARSHIP FUND**

*Provides scholarships to Temple Israel youth group members to attend youth trips.*

*In Honor Of:*

In appreciation of Faye & Don Reifler Memorial Youth Trip Scholarship Fund – Sharon and Barry Rosenberg

*In Memory Of:*

Shirley Feinberg; Shirley Friedman – Ann and David Rosenberg  
 Ross Fridson – Cheryl and Matthew Caplan; Ann and David Rosenberg; Keith and Karen Simmons; Merle and Charles Wolfson

*Marking Yahrzeit Of:*

Donald Reifler – Ann and David Rosenberg

#### **JEFFREY DAVID ROCHEN ז"ל MEMORIAL FUND**

*Provides programming on youth mental health issues.*

*In Memory Of:*

Phoebe Elkan Rochen – Phyllis and Don Rochen

*Marking Yahrzeit Of:*

Leo Kant Rochen – Phyllis and Don Rochen

#### **MICHAEL N. ROTH CAMP SCHOLARSHIP MEMORIAL FUND**

*Provides support for URJ camperships.*

*In Memory Of:*

Bruce Colton; Marilyn Rhoda Weiss – Jeffrey Lipshaw  
 Harvey Kline – Jeffrey and Eric Lipshaw

*Marking Yahrzeit Of:*

Alfred Lipshaw – Jackie, Jeff, Marc, Suzanne, Jodi, and Jason

#### **LYNN & HARVEY RUBIN SOCIAL ACTION FUND**

*Funds social action programming.*

*In Memory Of:*

Sheldon Goldman; Hadley Wine – Lynn and Harvey Rubin

#### **SAMSON FAMILY MINYAN FUND**

*Assists in the expenses of the daily Minyan.*

*In Honor Of:*

In appreciation of Linda and Alvin Katzen – Geri Saunders & Family  
 In celebration of the special birthday of Norm Samson – Karen and Bruce Gilbert

*In Memory Of:*

Ross Fridson – Barbara and Norman Samson & Family

#### **ABRAHAM SEIDERMAN ז"ל POST-COLLEGE EDUCATION FUND**

*Provides financial assistance to a graduate student accepted to or already attending law school or pharmacy school.*

*In Memory Of:*

Charlotte Schwartz – Diane Okun

*Marking Yahrzeit Of:*

David Brevoort – Simona Allison Seiderman

#### **SUSAN SHANKER CAMP SCHOLARSHIP FUND**

*Provides a UAHC campership to a Religious School student.*

*In Honor Of:*

Mazel Tov on the engagement of Ellen and Danny – Ellen and Marc Whitefield

Mazel Tov on the special birthday of Josh Shanker; Mazel Tov the special birthday of Wendy Shanker – Nancy Gell and Andrew Montgomery

*Marking Yahrzeit Of:*

Carol Gell – Nancy Gell and Andrew Montgomery

#### **SISTERHOOD GREENHOUSE FUND**

*Provide support for the Early Childhood Center Greenhouse.*

*In Honor Of:*

In appreciation of Judy Domstein; In appreciation of Rose Sallen – Jay Mellin

*In Memory Of:*

Fred Kamienny – Elissa and Danny Kline; Wendy and Larry Kohlenberg; Maggie and Brian Winshall  
 Dr. Mitchel Myerson – Karen Myerson & Family  
 Lisa Simon – Paula and Jay Mellin

#### **ROBERT SOSNICK FAMILY LIFE CENTER ENDOWMENT**

*Supports Temple Israel's Family Life Center.*

*In Memory Of:*

Phyllis Bean – Ellen and David Sherman  
 Ross Fridson; Sheldon Goldman; Barry Rubin – Sherrie and Norty Stern

#### **STARK FAMILY FUND**

*Provides family programming.*

*In Memory Of:*

Bluma Stark; Jay Stark; Sandy Stark; Jane Yanitz; Larry Yanitz – Rabbi Eric Stark

#### **RABBI M. ROBERT SYME MEMORIAL FUND**

*Provides for summer music programming.*

*Marking Yahrzeit Of:*

Eileen E. Crist; Larry J. Sachnowitz; Rabbi M. Robert Syme – Dr. Suzanne and David Syme

#### **TEMPLE ISRAEL ADULT PROGRAMMING FUND**

*Supports adult programming at Temple Israel*

*In Honor Of:*

In appreciation of Helene Deutch; In appreciation of Alicia Goldman – Debi Kaplan

#### **TEMPLE ISRAEL ANTI-SEMITISM EDUCATION FUND**

*Provides support for anti-Semitism education and programming.*

*In Honor Of:*

In appreciation of Temple Israel Anti-Semitism Education Fund – Karen Kline

*In Memory Of:*

Irene Bader; Martin Bader – Jill D. Bader  
 Ross Fridson – Iris and Richard Schloss

*Marking Yahrzeit Of:*

Sam Sweetwine – Murray Sweetwine

#### **TEMPLE ISRAEL RECORDING FUND**

*Supports music recordings created and performed by Temple clergy.*

*In Memory Of:*

Dr. Mitchel Myerson – Karen Keidan Myerson & Family

#### **TEMPLE ISRAEL SECURITY FUND**

*Supports security efforts at Temple Israel.*

*In Honor Of:*

In appreciation of Temple Israel Clergy and Staff – Donna and Stuart Sklar & Family

*In Memory Of:*

Berths Cohen Plesofsky – Carole and Charles Plesofsky

*Marking Yahrzeit Of*

Sandy (Fuzzy) Kantor – Elise and Ray Kantor

#### **DOROTHY THAL SUMMER CAMP FUND**

*An award to a Temple Israel youth wishing to participate in a Jewish camp program.*

*In Memory Of:*

Bruce Thal – Susan Thal



### THE TOBIAS FUND

*Leadership opportunities for Temple members.*

In Honor Of:

Mazel Tov on the birth of Madeline – Sherrie and Norty Stern

### LEONARD & ROSLYN TRUNSKY COLLEGE SCHOLARSHIP FUND

*Supports scholarship funding.*

Marking Yahrzeit Of:

Leonard H. Trunsky – Isabel Trunsky Dzodin

### JUANITA & GEORGE VICTOR MI SHEBEIRACH BLANKET FUND

*Provides Mi Shebeirach blankets to hospital, nursing home and rehab patients.*

In Honor Of:

Wishing a speedy recovery of Sheri Lee Brodsky – Yolanda and David Tisdale

In Memory Of:

Stella Morof; Marilyn Weiss – Linda Brodsky

### WEINSTEIN ISRAEL TRIP SCHOLARSHIP FUND

*Grants a scholarship to a Temple Israel student for travel to Israel.*

In Memory Of:

Sherman Char; Bruce Colton; Barbara Rubenstein; Marilyn Weiss – Judith and Sydney Weinstein

### WOMEN OF TEMPLE ISRAEL FUND

*Supports Women of Temple Israel programming.*

In Memory Of:

Phyllis Bean – Sherri and Michael Wolf–Freedland  
Marvin Goldstein – Wendy and Larry Kohlenberg  
Fred Kamienny – Judie and Jerry Lax; Andi and Mark Weiss; Kim Weiss; Elyse and Scott Weiss  
Eunice Sherman; Karen Tenenbaum – Wendy, Larry, Jared, and Liza Kohlenberg

Marking Yahrzeit Of:

Ezra Foner – Miriam Foner and Eric Gould, Adrienne Foner Gornstein & Ross Foner

### YALDEINU FUND

*Funds for children who have been orphaned in our community.*

Marking Yahrzeit Of:

Bernard Waxman; Bernice Waxman – Marcy Chudnov

### WENDY & RABBI PAUL YEDWAB YOUTH ENRICHMENT FUND

*Supports a variety of youth enrichment activities offered or sponsored by Temple Israel.*

In Honor Of:

Mazel Tov on the 40th wedding anniversary of Patti and Steve Tapper – Julie and Rick Kay

Mazel Tov on the special birthday of Rabbi Paul Yedwab – Dr. Amy Marks & Family; Carolyn and Steven Marks

In Memory Of:

Phyllis Bean; Dr. Barry Rubin – Sharon and Dr. Charles Taylor  
Rhoda Cantor – Rose and Steve Sallen  
Sandi Millman – Suzy Rivkin & Family

### YFTI FUND

*Supports YFTI activities.*

In Honor Of:

In appreciation of Rabbi Jen Lader – Leonard Williams

In Memory Of:

Beloved Marilyn – Sheri and David Jaffa

Marking Yahrzeit Of:

Barbara Williams – Leonard Williams

### YOUTH ISRAEL PILGRIMAGE FUND

*Supports youth scholarships for Temple Israel sponsored trips to Israel.*

In Honor Of:

Mazel Tov on the Bar Mitzvah of Avery – Sherrie and Norty Stern  
Mazel Tov on the engagement of Dr. Rachel Appel and Sam Fleischer – Carolyn and Steven Marks

Mazel Tov on the engagement of Emily Barnett and Geoffrey Linden – Dr. Amy Marks & Family; Carolyn and Steven Marks  
Mazel Tov on the Bat Mitzvah of Brooke Jaffe – Barbara and Sheldon Larky

In Memory Of:

Gregory Lewis Cliff – Dr. Amy Marks Swedler & Family

### JUDITH & RICHARD ZATKIN YOUTH FUND

*Provides resources for Youth Group programs.*

In Memory Of:

Ross Fridson; Richard Hoffman; Sally K. Nicola; Mitchell Shiffman – Lynn and Don Apel

### FUNDS BEING FORMED

#### RYAN DEMBS MEMORIAL FUND

In Honor Of:

In appreciation of Rabbi Joshua Bennett – Lisa and Bruce Goel

In Memory Of:

Arline Carris; Rob DeRoven; Gail Lichten; Ida Senzer; Erwin Young – Lisa and Rick Rubenfaer  
Sherman Char; Sheldon Goldman – Julie, Ron, Rachel, Stacey, and Melanie Hirsch

Ross Fridson – Julie, Ron, Rachel, Stacey, and Melanie Hirsch; Lindsay and Brian Hords; Hedda and Bill Panzer; Shelley and David Wainer  
Janice Katz – Lindsay Dembs

Barbara Rubenstein – Shelley and David Wainer

Marking Yahrzeit Of:

Bill Rubenfaer – Beverley and Dennis Wolgin

#### NANCY KATZMAN FAMILY CONNECTION FUND

*Provide technology and other means to connect seniors with their families.*

In Memory Of:

Phyllis Bean – Hilary and Edan King

Anita Rogers – Robert Chonoles and Deborah Siegel

#### RICHARD MONASH z"l CARING FUND

*Supports Temple Israel members in need.*

In Memory Of:

Phyllis Bean – Sheila and Dr. Owen Perlman & Family  
Ross Fridson – Barbara and Allan Ben; Karen and Ricky Erlich; Nikki Fine; Bernard Friedman; Barbara Leshman; Roz and Leon Levine; Cheryle Lutwin; Barbara and Norman Samson & Family; Yolanda and David Tisdale; Beverley and Dennis Wolgin  
Robert Schweiger – Linda Golnick

#### JEFFREY SURNOW z"l MEMORIAL FUND

In Honor Of:

In appreciation of Jeffrey Surnow Memorial Fund – David Stanislaw

Marking Yahrzeit Of:

Blanche Brant – Michele and Jordan Scharg

#### TEMPLE ISRAEL "HELP FROM AFAR FUND"

*Supports immigration aid.*

In Memory Of:

Pauline Chudnov – Marcy Chudnov

Renee Gerger – Debbie and Jeff Chutz

#### TEMPLE ISRAEL VIRTUAL PROGRAMMING & STREAMING FUND

*Provides funding for virtual programming and streaming.*

In Honor Of:

In appreciation of Temple Israel Virtual Programming & Streaming Fund – Reva Rosen

Marking Yahrzeit Of:

Donald Kapetansky – Carol and Michael Golob  
Edward Welford – Bruce Welford

TO MAKE A TRIBUTE ONLINE, GO TO  
**WWW.TEMPLE-ISRAEL.ORG/TRIBUTEFUNDS**



USPS 538-040

5725 Walnut Lake Road | West Bloomfield, Michigan 48323  
Phone: 248-661-5700 • Fax: 248-661-1302  
Tyner Religious School: 248-661-5725 • Fax: 248-661-5790  
The Susan & Rabbi Harold Loss Early Childhood Center: 248-661-5750  
[Temple-Israel.org](http://Temple-Israel.org)

Volume 66 • March/April 2024 • Number 2  
Affiliated with the Union for Reform Judaism

Non-Profit Org.  
US Postage  
PAID  
Permit No. 902  
Royal Oak, MI

Time sensitive material enclosed.

#### Clergy

Rabbi Harold S. Loss | Rabbi Paul M. Yedwab  
Rabbi Joshua L. Bennett | Rabbi Marla R. Hornsten  
Rabbi Jennifer T. Kaluzny | Rabbi Jennifer M. Lader  
Cantor Michael Smolash (*The Stephen Gottlieb<sub>z</sub> Cantorial Chair*)  
Cantor Neil Michaels (*The Stephen Gottlieb<sub>z</sub> Cantorial Chair*)  
Rabbi Leon Fram (1895-1987) | Rabbi M. Robert Syme (1920-2003)  
Cantor Harold Orbach (1931-2014) | Cantor Robert Tulman (1904-1960)

#### Professional Staff

Rabbi Arianna L. Gordon, RJE - *Education & Lifelong Learning Director*  
Rabbi Jeffrey Stombaugh - *Director of The Well*

Jason Plotkin - *Executive Director*  
Cassi Cohen - *Assistant Executive Director*  
David M. Tisdale - *Strategic Development Director*  
Rachel Levine - *Early Childhood Center Director*  
Kari Provizer, LMSW, ACSW - *Family Life Center Director*  
Maya Grinboim - *Music Production Director*  
Alicia Goldman - *Programming Director*  
Eric Groh - *Facilities Director*  
Gary Breuer - *Controller*

#### Officers

Andrew Bocknek - *President*  
Debra Gordon - *Vice President* | Amy Brody - *Vice President*  
Jodi Neff - *Treasurer* | Jason Ishbia - *Secretary* | Lee Hurwitz - *Member At-Large*  
Joseph Bigelman - *Past President*

