

Temple Israel

MESSENGER

FEBRUARY 2018 • SHEVAT/ADAR 5778 • Volume 60, No. 1

MESSENGER FUNDED BY THE PAUL AND LOIS KATZMAN ENDOWMENT



2018 Purim Celebration

Adult Purim Spiel

Wednesday, February 28 (page 4)

Children's Purim Spiel and Carnival

Sunday, March 4 (page 5)



Shamor L'amour



I really like a good romance, whether a best selling novel, the latest romantic-comedy, or best of all—real life (Hint, hint to my husband: some flowers every now and then couldn't hurt.) And so, the fact that it is February, and therefore the month of the quintessential Jewish holiday of Valentine's Day, makes it even

better. Oops! Did I say, Jewish holiday? Well, not exactly. The roots of Valentine's Day are quite obscure, but history.com explains its origin to be both a pagan fertility rite, and a Christian feast day for St. Valentine. While there might be some romance in its foundation, it doesn't really become a festival for lovers until the 14th century. And as far as Judaism is concerned...our Jewish Valentine's Day doesn't come around until Tu b'Av, with a very, very minor match-making festival.

So what does Judaism have to do with Valentine's Day? The truth is, nothing really, except that it is February, and Jews love, love. This month, Temple Israel joins with Jewish Women International in its 4th annual observance of *Shamor L'amour*: a little word play with the Hebrew, *shamor*, which means guarding or keeping, and *l'amour*, which in French, means love. JWI is asking congregations like ours to think about our relationships, focusing on how we can all create healthy and affirming relationships with the people we love.

Healthy relationships are the expectation. We simply assume that all relationships are good, positive and worthwhile. But, in our current climate, we are beginning to understand how dangerous relationships (of all types) can be. Sexual harassment is pervasive. Abuse is shrouded in secrecy. Too often, relationships devolve into unhealthy ones on one end of the spectrum to abusive ones on the

other. Abuse statistics are frightening. One in four women will experience domestic abuse in her lifetime. Believe it or not, the Jewish community is not immune. The numbers are the same in the Jewish community as in every other. It's time to take a good, hard look at who we are and how we treat the people in our lives—especially the loves of our lives.

The Torah is a reasonable place to start. As we progress deeper into the book of Exodus throughout this month, we deal with the theme of building the tabernacle in the wilderness (the replica of which is our golden ark in the sanctuary). At first, it might not seem at all related to love or relationships, but there is a line that teaches exactly that. It states that two *cherubim* are meant to rest upon the cover of the ark, facing each other, with wings reaching heavenward. "And between them," God says, "I will meet you." (Take a look at the ark in the sanctuary: There are two *cherubim*, with a circle around the letters יהוה, spelling out God's name right there in the middle.)

It is the smallest detail that is most important: not that the *cherubim* are on top of the ark, not that their wings reach heavenward, though I love that imagery, but that they are facing each other, and there, right in between them, is God.

Just as with the *cherubim*, our relationships are about turning towards each other, about offering ourselves to others in openness and love. *Shamor L'amour* reminds us that we must learn how to create significant, loving, and healthy relationships. It might be through communication, or patience, or honesty, or cooperation, or kindness, or all of the above. And, we have to model them for our children and grandchildren, so that they will create them too.

So, let this be a time to focus on guarding and keeping and protecting our love. I hope we will remember that when we face each other, when we are in relationship with one another, that God is also present, encouraging us to act in good and kind and loving ways, reminding us that all of our relationships are indeed holy endeavors.

Marla Karpman



IN THIS ISSUE

- 3 | Religious Services
- 4 | Purim
- 6 | Tikkun Olum - Helping Others
- 8 | Community
- 13 | Temple Youth
- 14 | Temple Music
- 16 | Susan & Rabbi Harold Loss
Early Childhood Center

- 18 | Tyner Religious School - Education
- 22 | Libraries & Media Center
- 24 | Robert Sosnick Family Life Center
- 27 | Our Affiliates
- 30 | Life Cycle Events
- 34 | Tributes
- 43 | February Calendar

RELIGIOUS SERVICES

KABBALAT SHABBAT SERVICES

Fridays • 7:30 pm

MINYAN SERVICE

Monday - Thursday • 7:30 am

Sundays and holidays • 9 am

A wonderful way to start your day, to support fellow congregants in worship, and to bond with your community. Coffee, juice, and bagels are available. Please join us. Funded by Lipson Family Minyan Fund and The Samson Family Minyan Fund.

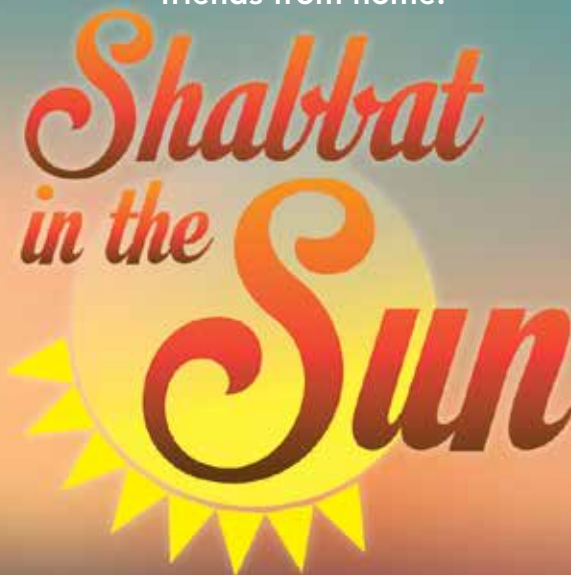
SHABBAT SOLOS

Shabbat Solos...a group that sits together at the Kabbalat Shabbat Friday night services, for those attending services alone or for the first time. Like to help, join the group or know someone who could benefit from it? Contact Mary Jane Larson at 734-812-8170 or Shabbatsolos@temple-israel.org.

TI LIVE

Can't make services? You can still be with us! Korman Hall Service: Fridays at 7:30 pm. Watch the service at www.temple-israel.org. Click on the live streaming link. Archived services are available at [YouTube.com/user/TempleIsraelMI](https://www.youtube.com/user/TempleIsraelMI).

Come spend a winter Shabbat
with Temple Israel clergy and
friends from home!



February 2, 2018 • 7:30 pm

Olympic Heights Community High School
20101 Lyons Road | Boca Raton, Florida

March 9, 2018

Temple Kol Ami
15030 N 64th St | Scottsdale, Arizona

The service is complimentary, but we do ask that you RSVP with the number of people who will be attending. For more information and to RSVP, contact Erin Dunn at edunn@temple-israel.org or 248-661-5700.

Funded by The Dr. Sol Luft and Beatrice Locker Luft
Arizona Shabbat in the Sun Memorial Fund

America's got Tcholent

A Reality TV Purim Spiel for Adults

Wednesday, February 28 • 7 pm at Temple Israel

7 pm: Wine & Cheese • 7:30 pm: Purim Spiel, followed by dancing & hamentashen

The Kardashians and RuPaul have nothing on the zany cast of M'gillat Esther. Come celebrate Purim with our risqué Adult Spiel. Enjoy wine and cheese, boo Haman off the stage, and laugh the night away.

No charge. Open to the community. Casual dress or come in costume.

RSVP not required. For questions, contact Maya at 248-661-5700 or maya@temple-israel.org.





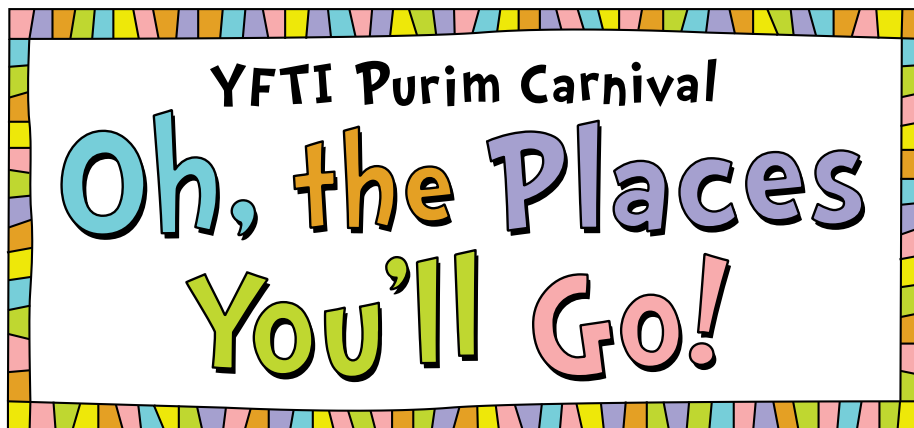
Dr. Seussan's
GREEN EGGS
AND HAMAN
A Children's Purim Spiel

Come prep your costumes, lend me your ears,
Purim is coming, it's practically here!
You'll hear the Megillah, for all you partakers,
And every time we say "Haman", you'll take out your shakers.
And then! Oh the noise, from those noisy noisemakers!
After our Spiel there'll be sticky good treats,
Hamentashen and games - undeniably sweet.
Yes, our Carnival party will be like no other,
Good things await, one after another!!

Sunday, March 4, 2018
10:45 - 11:50 am

Please bring a box of Kosher pasta
or macaroni to be used as a grogger.
All pasta will be donated to Yad Ezra to
help combat hunger in our community.

For more information, contact Stephanie Brovenick at
248-661-5700 or stephanie@temple-israel.org.



Sunday, March 4, 2018

9:30 - 10:45 am • Toddler Carnival Pre-Glow!

Kids 4 & under • \$5 all-you-can-play

11:50 am - 2 pm • Games for All Ages!

\$10 all-you-can-play

Raffles, moonwalks, food & more!

All carnival proceeds go toward scholarships for youth programs.
For more information, contact Devorah at dglanz@temple-israel.org.



Purim Blood Drive • Sunday, March 4, 2018 • 9 am

To set up an appointment or receive more information,
contact Dr. Ira "Mike" Mickelson at 248-819-1235.

TIKKUN OLAM HELPING OTHERS



▲ In Review - Housing the South Oakland Shelter: Temple Israel would like to thank our dedicated volunteers who helped with this year's project with the South Oakland Shelter. Your hard work, energy and commitment to this cause truly made a difference in the lives of thirty men, women and children from the South Oakland Shelter. We couldn't have done it without all of our countless volunteers who donated their time and services.

A special thank you to our dedicated co-chairs: Art Dubin, Jane Schelberg, Andrew Schelberg and Jack Wander. Thank you for everything!!! You truly are the heart of this mitzvah project! Many thanks to our fabulous committee: Mike Anspach, Janice Cherkasky, Beth Kirschner, Marilyn Moss, Amy Wander and Michelle Winston for the outstanding job they did!

"Todah Rabah" to Temple's wonderful affiliate groups: Sisterhood, Brotherhood, YFTI & Quest for their help and support. We would also like to thank Temple Israel's Caring Community, Cause We Care, Shoshana Arden and JARC for their help and hard work!

Finally, to the many individuals and businesses who gave so much of their time and services to make this week a success – we thank you for your continued support and generosity!

Special thanks to the Lynn & Harvey Rubin Social Action Fund, Susan & Hanley Yorke Social Action Fund, Lauren & Phillip Fisher Family, and Stephen Gottlieb Memorial Fund.

BOX TOPS AND LABELS FOR EDUCATION

Box Tops and Labels for Education will now be collected in classrooms, ECC office and at the Tyner entrance in the recycle bins. We hope everyone will continue to support our incredible ECC with Box Tops and Labels for Education.



EYEGLASS RECYCLING

Temple Israel is pleased to partner with the Lions Club of Novi in an eyeglass recycling program. Lions have been collecting glasses for more than 80 years. Refractive errors can be easily corrected with eyeglasses, yet millions in developing nations lack access to basic eye care services. Lions have recognized the urgent need for corrective lenses and continue to lend their support to the Lions Recycle for Sight Program. Congregants may drop off eyeglasses in the drop box at the Tyner entrance.

INK CARTRIDGE RECYCLING

Temple Israel is part of a cartridge recycling program, which provides an easy method for recycling used ink jet and laser print cartridges. Congregants may drop off their empty ink jet and laser cartridges in the collection bin at Temple's Tyner entrance. Please remove your cartridges from boxes or bags before placing them in the box. Thank you for your participation!

POP TAB COLLECTION

Temple Israel will continue to collect pop tabs for the Ronald McDonald House of Detroit on an ongoing basis. Please help by collecting and bringing your pop tabs to the drop box at the Tyner School entrance! Collecting pop tabs helps support the operations of Ronald McDonald Houses. **Questions? Please contact Randi Simko at 248-661-5700 or randi@temple-israel.org.** Funded by the Lynn & Harvey Rubin Social Action Fund.

VOLUNTEER AT DIXON

Help make a difference in a child's life! Temple Israel is thrilled to be continuing our partnership with Dixon Educational Learning Academy in Detroit. The school serves students in kindergarten through 8th grade with a loving staff and environment where children are first. Dixon Elementary/Middle School has a uniform dress code. Temple volunteers are needed to help read with kindergarten students. Days and times are flexible. **Interested? Please contact Randi Simko at randi@temple-israel.org or 248-661-5700.** Social Action Programming is sponsored by the Lynn & Harvey Rubin Social Action Fund.

FREE FRESH FOOD PANTRY

Tuesdays, February 6 & 20 • 3 - 5 pm
Free Fresh Food for those in need.
Pick up food at Temple Israel the first and third Tuesday of every month from 3 - 5 pm. Photo ID required. **For more information, contact Elaine Bertsch at 248-661-5700 or elaine@temple-israel.org.** Social Action Programming is sponsored by the Lynn and Harvey Rubin Social Action Fund.



YAD EZRA

Sunday, March 11

Looking for a rewarding volunteer opportunity with minimal time commitment? Deliver food to the homebound with Yad Ezra on Sunday, March 11.

For more information, contact Randi Simko at randi@temple-israel.org or 248-661-5700. Social Action Programming is sponsored by the Lynn & Harvey Rubin Social Action Fund.



TEMPLE COMMUNITY



Goodman Family Judaic & Archival MUSEUM at Temple Israel

Temple Israel's Goodman Family Judaic & Archival Museum is thrilled to announce that our permanent collection is now being featured in our newly installed, state-of-the-art museum display cases in the Wasserman Atrium, just outside the main sanctuary. We hope you will take some time to view our beautiful Judaic collection.

Are you looking for a special way to honor someone you love? Consider dedicating a beautiful piece of Judaic artwork. By making a gift to the Museum in honor or in memory of a loved one, or in honor of a life cycle event, you will be part of the continuing legacy of a permanent Judaic collection, which will be enjoyed by Temple Israel for generations to come.

For more information, please contact David Tisdale at 248-661-5700 or dtisdale@temple-israel.org.

YOUNG ADULT PROGRAMMING (20s-40s)

NEXTGEN CONNECT:

INTERNSHIPS. JOBS. OPPORTUNITY.

Working one-on-one, NEXTGen Connect offers guidance, advice and assistance for job applicants. Learn to produce polished, effective resumes, hone interviewing skills, set career goals, network, connect and find your fit in the business community. Whether you're looking for your first job, or trying to move back home, contact NEXTGen Connect to get your job search off to a strong start. Students who are currently in college are eligible to register for the Internship Program (formerly the College Student Internship Program). The majority of internships in the current inventory are paid opportunities in a wide range of fields, from business to medicine, marketing to nonprofit work. For information, call Lauren Rubin at 248-233-4243 or lrubin@jvsdet.org.

PJ'S PANCAKES & PRAYER

Saturday, February 3 • 5 - 7 pm

Join our Temple Israel clergy for a fun-filled evening. Together we'll create unique bedtime crafts, enjoy a delicious pancake dinner in our pajamas, celebrate the end of Shabbat with a relaxing Havdalah, and learn about special Jewish bedtime rituals. Open to the community. \$36 per family. Reservations requested by Monday, January 29th. RSVP to the Education Office at 248-661-5725 or email alicia@temple-israel.org. Temple Israel Young Adult Programming is supported by Marilyn and Walter Wolpin.

MOTHER & DAUGHTER BOOK CLUB

Thursday, February 8 • 6:30 pm

See page 22 for more information.

SHABBAT MISHPACHA

Friday, March 16

Join Temple Israel on the third Friday evening of

each month for a warm and welcoming family Shabbat experience. **5:30 pm:** Adults, join us for wine, cheese and time to schmooze, while your kids get into the Shabbat spirit with our Temple staff. **6 pm:** Family Service (geared toward families with children K-2nd grade, but all are welcome!) **6:30 pm:** Shabbat Dinner. **7 pm:** Open Library. Thanks to the Schelberg Family Shabbat Birthday Fund, all children 12 and under who celebrate their birthday at the monthly Shabbat Mishpacha services receive the gift of a Jewish book. Dinner reservations requested by March 12th. \$12 for adults; \$6 for children 4-12; under 4 are free. **Register at Temple-Israel.org/Shabbat_dinner_reservation.** Questions? Contact Sandi Stocker at Sandi@temple-israel.org or 248-661-5700.



GENERAL PROGRAMMING

COLLEGE CONNECTION

Do you have a student going off to college? How about one or two of them already there? Make sure they stay connected with Temple Israel by signing them up for our College Connection. It's easy! We just need the information listed below and we'll get him/her connected. Once we have your student's contact information, he or she will receive the Temple Israel Messenger, information on special events occurring in the Jewish world, invitation to dinner sponsored by Brotherhood, gift packages for the holidays and more! Please send your student's name, school and expected year of graduation, college address (including apartment or dorm number), cell phone and email to Randi Simko at randi@temple-israel.org or 248-661-5700.

Temple Israel invites families to join us for a fun-filled event

Shabbat for Tots PURIM STYLE

**Saturday, February 17, 2018
10:30 - 11:30 am at Temple Israel**

Families with children 5 and under are invited for a unique Shabbat experience.

Wear your favorite costume and join our Temple Israel clergy and early childhood educator, Jodie Kanagur, as we celebrate Shabbat and Purim with songs, prayers, crafts and snacks.

For more information or to register contact Randi Simko at randi@temple-israel.org or 248-661-5700 by Monday, February 12.

Young Adult Programming is supported by Marilyn & Walter Wolpin.

COMMUNITY (CONTINUED)

The Weinberg Family Library & Temple Israel Sisterhood are excited to present this film discussion series.

Join our clergy for:

Dinner & A MOVIE



Temple Israel invites you to join us for

THE CHOSEN

Movies
@ THE
MAPLE

Temple Israel
Making a difference.

\$10 MEMBER/\$12 GUEST
INCLUDES COFFEE AND NOSH.
FACILITATED DISCUSSION
TO FOLLOW THE FILM.

GAME DAY

Thursday, February 1 • 1 - 4 pm

Thursday, March 1 • 1 - 4 pm



Bring your friends and your favorite game! Canasta, Bridge, Mahjong, Pinochle, Euchre & Rummikub. Coffee, tea and cookies will be served. There is no charge to attend but reservations are required by the Monday prior to Game Day. **RSVP to Randi Simko at randi@temple-israel.org or 248-661-5700.**

◀ DINNER & A MOVIE

Thursday, February 1 - *Brothers*

Thursday, February 15 - *Holy Land Hardball and Shooting for Home*

Group showing at 5 pm followed by dinner and discussion at approximately 6:45 pm. \$16 per session. Reservations are required no later than the Monday before each date. **For more information or to register, contact Lauren Marcus Johnson at ljohnson@temple-israel.org or 248-661-5700.**

◀ MOVIES AT THE MAPLE

Thursday, February 8 • 10 am at The Maple Theater (4135 W Maple Rd, Bloomfield Hills)

For more information or to register, contact Randi Simko at randi@temple-israel.org or 248-661-5700.

COLLEGE DINNER DATE



Sunday, February 11 • 5:30 pm

(HopCat - 300 Grove St, East Lansing)

Sunday nights in the winter can be lonely on a college campus. Beat the "winter blahs" by joining Temple Israel for an evening filled with dinner and good company! The Temple Israel clergy will dine with our college students on February 11th. Reservations are required. **To RSVP or to learn more, please contact Randi Simko at randi@temple-israel.org or 248-661-5700.** College dinners are graciously sponsored by the Temple Israel Brotherhood.

BRIDGES

Thursday, February 15 • *Liturgy*

7 - 9 pm in a private home in West Bloomfield

This educational support/discussion group is geared to those who have converted, are in the process of conversion, involved in interfaith relationships, or simply born Jews seeking to learn more about their religion, thus BRIDGING the gaps between their culture of origin and Judaism. The sessions will cover topics such as Jewish holiday celebrations, life cycle events, and creating new family traditions. **For reservations and location, please text or call Carol Lynn Cooper at coopercna@aol.com or 248-390-8212.** Reservations are requested one week prior to the session.

NEW MEMBER CONNECTION

Tuesday, February 27, Thursday, March 22 & Tuesday, April 24 • 6 pm

We are thrilled that you have joined Temple Israel, one of the largest Reform congregations in North America. New members, like you, are the future of our congregation and the future of our Jewish community. Our clergy, staff and officers would like to meet you and get to know you better! There is no charge and we hope that you will attend all three sessions. Dinner will be served. Please join us for what is certain to be a memorable experience. **To register, please contact Randi Simko at 248-661-5700 or randi@temple-israel.org.**

SAVE THE DATE:

LIMMUD MICHIGAN

Sunday, March 11 • Student Center at Wayne State
For more information go to: www.limmudmichigan.org.

RABBI KALUZYNY'S 13TH ANNIVERSARY

Friday, June 22, 2018

Save the date for Rabbi Kaluzny's 13th anniversary celebration on June 22nd, the first outdoor service of the year.

we are going to ISRAEL

TEMPLE ISRAEL OF WEST BLOOMFIELD TRIP
TO ISRAEL FOR **FIRST-TIMERS & RETURNEES**
LED BY RABBI HAROLD & SUSAN LOSS
AND RABBI PAUL & WENDY YEDWAB

APRIL 5-18, 2018

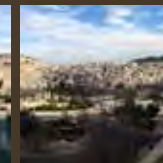
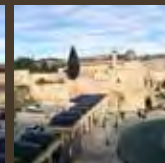
▼ INCLUDES:

- 11 nights' accommodation at select hotels
- 12 days of touring in a luxury, air-conditioned bus with a licensed, English speaking tour educator
- 1 group transfer and assistance to and from the airport
- All site entrance fees and program fees as per itinerary
- Meals: breakfast daily, 1 lunch & 8 dinners
- Portage at the airport and hotels
- Hostess throughout
- Water on the bus
- Tips for guides and drivers

Search by your congregation name, Temple Israel of West Bloomfield, at arzaworld.com to view full trip itinerary and highlights

TOLL FREE 1-888-811-2812

Questions? Contact Donna at donna@temple-israel.org or 248-661-5700.



Tl advisors.org



REGISTER TO BECOME A MENTEE

Mentees will utilize TI Advisors' online portal to submit specific questions and request a Mentor.

Administrators will screen all requests and pair appropriate Mentees with the most knowledgeable Mentor to engage with.

1. Register on TI Advisors' Online Portal.
2. Complete your Background Profile.
3. Submit a detailed description of the business problem or issue that you would like to work on with your Mentor.
4. Questions/issues will be organized into the following groups:
*Accounting/Budgeting | Buy/Sell Business | Cash Flow Management
Customer Engagement/Retention | Financing & Capital Raising
Franchising | Human Resources - Succession Planning | Legal Issues
Marketing/Advertising/Social Media | Real Estate | Sales Strategy
Start Up Assistance - Biz Plan Development | Technology*
5. A Mentee Engagement Plan will be created, articulating the issue to be addressed, requisite materials to be provided by the Mentee, anticipated time frame (weeks/visits) and setting specific expectations and anticipated take aways from the mentoring experience. Note, the Mentor is expected to be a guide and a facilitator and is not expected to do the work for the Mentee.
6. Meet with your assigned Mentor
7. Upon completing the mentoring relationship, submit a short questionnaire to rate and evaluate your experience.

For more info and to sign up, visit

Tl advisors.org



2018 JEWISH POPULATION STUDY

Take part in this important study for our Jewish Community!

When you see "Count Me Detroit" on your home phone, or 248-710-0524 on your cell, please answer the call. Since random phone numbers are dialed, not everyone in the community will be called.

Beginning the week of January 14, and for the next 6-8 weeks, the Jewish Federation will be conducting a community study to:

- Provide critical information concerning who we are and where we are headed
- Identify the crucial needs in our community
- Help us create a roadmap for all Jewish communal organizations and foundations to plan for Jewish needs and interests for years to come

The last comprehensive study was completed in 2005. Our community has changed. Help us understand how and why.

Your participation is critical to the success of this study.

The interviewers will not know and will not ask your name or address. No personally identifiable details are linked to the answers and no financial solicitations will be made.

If the time we call is not convenient, please answer and ask to reschedule for a time that works for you.

Questions? Contact Linda Blumberg, Senior Planning Advisor, Jewish Federation of Metropolitan Detroit, at 248-203-1468 or e-mail: blumberg@jfmfd.org.

Thank you for helping our community!



TEMPLE YOUTH

YFTI Purim Carnival We Need Volunteers!

Sunday, March 4th

Contact Devorah at dglanz@temple-israel.org

QUEST: BAGEL BINGO BONANZA!

Sunday, February 18 • 11 am - 2 pm

Join Rabbi Josh and the Quest team for our February QUEST- an interactive day of service and fun! We will be serving brunch to the residents at Meer Apartments and running an awesome game of Bingo! Pick up and drop off at Meer Apartments (6800 W. Maple Road, West Bloomfield). No charge to attend, lunch Included! Open to the community! Register online at temple-israel.org/bagels. Questions? Contact Devorah at dglanz@temple-israel.org.

YFTI PURIM CARNIVAL

Sunday, March 4

See page 5 for more information.

SAVE THE DATES:

4TH-7TH GRADE CAMP STORER RETREAT

Friday, March 23 - Sunday, March 25

See page 19 for more information.

YFTI CITY TRIP

April 20 - 22, 2018

Get excited to join Rabbi Jen Lader for another fabulous adventure through the streets of CHICAGO!

8th Grade

Trip to Cleveland

**Friday, March 16 -
Sunday, March 18**

Join Rabbi Jen Kaluzny,
Rabbi Josh Bennett
and YFTI teens for an
awesome weekend!

Buses depart Temple Israel
at 9 am on Friday and
return at 2 pm Sunday.

Cost: \$199 due in full
by February 15.

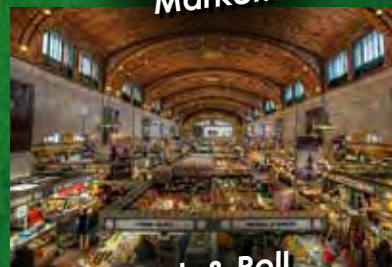
To register or for more
information, contact
Devorah Glanz at
dglanz@temple-israel.org
or 248-661-5700.



Friday Night Fun at
Temple Tifereth Israel!



West Side
Market!



Rock & Roll
Hall of Fame!



And so
much more!

MUSIC AT TEMPLE




COMPOSERS CORNER

The Composers' Corner is a new feature in the Messenger to let us get to know some of the many composers who's music adds to our services.

NOAH ARONSON

Noah is a soulful, energetic composer and performer, inspiring spiritual communities across the U.S. and beyond. After earning a degree in Jazz Composition and Piano from Berklee College of Music, Noah held the position of Composer-in-Residence at Temple Beth Elohim in Wellesley, MA where he produced 4 albums of Jewish communal music.

As a solo musician, Noah has released two full length albums and songbooks entitled 'Am I Awake' and 'Left Side of the Page.'

At Temple services, you can hear Noah's "Am I Awake" Barchu, which is sung across the country, as well as his gorgeous v'shamru, which our Teen T'fillah Team has introduced as Kabbalat Shabbat.



▲ **In Review - Appel Concert:** Sheldon Low got the whole school up and dancing for an exuberant concert of great Jewish music. Our Shabbat Singers also got to shine onstage with one of Jewish Music's brightest stars. Thanks to Elaine and Bob Appel for sponsoring another delightful concert for our students!

CALLING ALL TEEN BRASS PLAYERS

Blowing shofar for the High Holy Days is a huge thrill and an amazing mitzvah. If you play any brass instrument, please contact Maya at 248-661-5700 so we can get you on our team of shofar blowers for this coming Rosh Hashanah and Yom Kippur.





Laker Concert

BDN & N

BOXT, DRESKIN, NELSON & NICHOLS

Sunday, March 25 • 4 pm at Temple Israel

In the great spirit of Crosby, Stills, Nash and Young, come experience the new Jewish super folk group, BDN&N, made up of rock stars Josh Nelson and Dan Nichols and rounded off by our Reform community's most sought after master Cantors Rosalie Boxt and Ellen Dreskin.

Admission is free • All are welcome!

Questions? Contact Stephanie at 248-661-5700 or stephanie@temple-israel.org

The Laker Concert is sponsored in loving memory of Sarah & Harry Laker.



THE AUDREY & WILLIAM FARBER ENDOWMENT FUND FOR THE
SUSAN & RABBI HAROLD LOSS EARLY CHILDHOOD CENTER

GLOW BOWL

Mommy & Son*
Evening

with dinner & bowling



Thursday, February 15 • 5 pm

Langan's Nor-West Lanes

(32905 Northwestern Hwy, Farmington Hills)

\$36 for adults, kids are free! Ages appropriate for children 6 and under. Includes 2 games, shoes, pizza, pop, dessert + dancing!

*Any special person is welcome to attend in lieu of a parent, and everyone is welcome.

Register online at

Temple-Israel.org/MommySon2018

Questions? Contact the ECC office at 248-661-5750.

*Supported by the Stark Family Fund and
the Dorothy & Arnie Collens Family Event Fund.*

◀ **MOMMY & SON EVENING WITH DINNER & GLOW-BOWLING**

Thursday, February 15 • 5 pm at Langan's Nor-West

ECC - MID-WINTER BREAK BEGINS (NO SCHOOL)

Monday, February 19 (School resumes on Monday, February 26)

SAVE THE DATES:

PURIM SPIEL

Sunday, March 4 • 10:45 am

See page 5 for details.

PARENT CONNECTION

Wednesday, March 7 • 9:15 am

DADDY DAUGHTER DANCE

Thursday, March 15

PASSOVER MAGIC MOMENTS

Wednesday, March 28 • 9 am

PASSOVER 1ST SEDER

Friday, March 30

PASSOVER BREAK BEGINS (NO SCHOOL)

Friday, March 30 (School resumes on Monday, April 9)

PASSOVER 2ND SEDER AT TEMPLE

Saturday, March 31

CELEBRATE PURIM WITH THE MITZVAH OF MISHLOACH MANOT!

Send delicious treats with your Purim greetings to your child's ECC Teachers & Staff, Temple Clergy & Staff or Family & Friends! To sign up go to temple-israel.org/ECCPurim or contact Jodi Mills with questions 248-798-8423.





The Audrey & William Farber Endowment Fund
for the Susan & Rabbi Harold Loss **early**
childhood
center

REGISTER EARLY! FOR OUR 2018 SUMMER PROGRAMMING

Camp Shemesh

Our program offers three fun-filled 3-week summer sessions in a traditional early childhood center environment. (2-5 yrs)

- Weekly themes and special visitors
- Shabbat celebrations
- Music, science, soccer, art, water play, sports and outdoor games

Safety Town

2 one-week full-day sessions offering safety lessons about fire, pedestrians and traffic. (4 yrs-Kindergarten)

Family Fun Programs

9-week summer experiences perfectly geared for our youngest children and a parent/caregiver.

BABIES, BUBBLES & BUBBIES (0-18 mos)
FREE fun-filled mornings with songs, stories, puppets, bubbles & more (at Fleishman's Senior Facility).

BABY BUNCH & BEYOND (6-16 mos)
Developmental baby playtime with weekly circle time and variety of sensory experiences.

TEMPLE TOTS (16-36 mos)
Developmental toddler playtime with stories, music, circle time and sensory activity stations.

CHALLAH TO HAMENTASHEN (18 mos - 4 yrs)
Jewish cooking class with kid-friendly recipes, singing, stories and a yummy snack.

Early and Late Care
Available Daily
Liberal Scholarships
Available Through the
Audrey & William Farber
Endowment



Temple Israel
Making a difference.

For more information, contact The Susan and Rabbi Harold Loss Early Childhood Center at Temple Israel
5725 Walnut Lake Road, West Bloomfield • temple-israel.org • 248-661-5750

TYNER RELIGIOUS SCHOOL



◀ **In Review:** The Kindergarten classes selected books from their own collections to bring in and share with children who do not have books. Some of the great things even our youngest students are doing in the Religious School.

TEMPLE ISRAEL + Toyology Toys

We are proud to partner with Toyology Toys for a year-round shopping experience that you can feel good about! Shop at Toyology in store or online (use code TISRAEL10) and mention Temple Israel for 10% of your purchase to kickback toward funding Temple Israel educational programming. What better feeling than knowing you are not only giving, but giving back?! Questions? Contact Alicia at 248-661-5700 or alicia@temple-israel.org.

SAVE THE DATES:

DISCONNECT TO RECONNECT

Saturday, March 10 • 10:30 am

Families with children in grades K-6 are invited for a special Shabbat! Join Temple Israel and Reboot as we join in on the National Day of Unplugging! Check your cell phones at the door to relax and enjoy games and activities to revitalize the soul and reconnect to each other!

BLESSING OF THE NEWBORNS

Saturday, March 31 • 10:30 am

All children born in the last twelve months to families of our congregation are invited to Passover morning services. They will be invited on to the Bimah to be blessed by their parents/grandparents and our clergy. Siblings and extended families are also invited. Please RSVP to Alicia Mendelson, Family Education Coordinator at alicia@temple-israel.org or 248-661-5700. Gifts given to families of children newly born to our congregation are from the Les & Bob Iwrey Children's Bedtime Ritual Fund of Temple Israel.

Families with children in PreK-3rd grade are invited to an astronomical event:

Havdalah at the Planetarium

Saturday, February 10, 2018
5:30 - 7:30 pm

Michigan Science Center
5020 John R St. • Detroit

Join Temple Israel for an evening under the stars! Come explore the museum, enjoy dinner in the Cosmic Cafe, and create a special project before making our way into the planetarium for a stellar Havdalah and star show through a Jewish lens!

Cost is \$36 per family. Parking not included. Reservations are requested by Monday, February 5, RSVP to the Religious School office at 248-661-5725 or email Alicia at alicia@temple-israel.org.

ADULT EDUCATION

TORAH LINE-BY-LINE

Tuesdays • 12 - 1 pm

Join us for a line-by-line study of Torah. Using commentary, sharing our own insights, and looking at various translations, we work our way through this amazing and inspiring text. Taught by Rabbi Arianna Gordon.

SHABBAT TISCH

Saturdays • 9:30 - 10:30 am

Join us for a Shabbat morning of insights and investigation into the texts of our Bible.

INTERMEDIATE HEBREW

Tuesdays • 7 - 8 pm

This class is designed to improve basic reading skills, and to increase fluency and accuracy. We will use a variety of Hebrew texts. Taught by Dalia Shaham.

INTRO TO JUDAISM

Tuesdays • 7 - 8:30 pm

Learn about Jewish history, theology, liturgy, literature, culture and Israel! This 14-week class is taught by Temple Israel clergy and includes a Shabbat dinner and Holocaust Museum tour. Open to adults of all backgrounds. Cost is \$130 per individual, or \$150 per couple.

TORAH TALKS

Tuesdays • 8 - 9 pm

Let's look at the Tanakh with new eyes! Weekly readings and discussions will be guided by renowned Torah scholars. Students will participate in a worldwide curriculum developed in the Land of Israel! Free for members, \$36 nonmembers. \$36 additional fee to purchase text. Taught by Dalia Shaham.



The poster features a dark blue background with a large, bright full moon in the upper center. At the top, there are three logos: 'TYNER RELIGIOUS SCHOOL at Temple Israel' on the left, 'BUNK 45 year-long camp • life-long friends' in the middle, and 'QUEST ON A MISSION TO CHANGE THE WORLD' on the right. Below the logos, the text 'CALLING ALL 4TH - 7TH GRADERS!' is written in large, bold, light blue letters. A large wooden sign with the words 'Camp Storer' in white and 'RETREAT' in red is prominently displayed. Below this sign, a smaller wooden sign hangs with the dates 'MARCH 23, 2018 THRU MARCH 25, 2018' and 'SHABBAT WEEKEND FUN!' in white and blue text. The address '6941 STONY LAKE ROAD • JACKSON, MI' is written in small white text above the date sign. At the bottom, a red tent is pitched on green grass. The text 'JOIN TYNER RELIGIOUS SCHOOL, BUNK 45 & QUEST FOR A WEEKEND AT CAMP STORER!' is written in bold black letters. Below this, the arrival and pickup times are listed: 'Arrive at Temple Israel on Friday, March 23 at 3:30 pm. Pick-up at Temple Israel on Sunday, March 25 at 11:30 am.' The cost is listed as 'Cost: \$125 by February 23/\$150 after. Deadline to register is March 9.' Finally, contact information is provided: 'For more information or to register, please contact Lisa Kaplan 248-661-5725.'

TYNER RELIGIOUS SCHOOL
at Temple Israel

BUNK 45
year-long camp • life-long friends

QUEST
ON A MISSION TO
CHANGE THE WORLD

CALLING ALL
4TH - 7TH
GRADERS!

Camp Storer
RETREAT

6941 STONY LAKE ROAD • JACKSON, MI

MARCH 23, 2018
THRU
MARCH 25, 2018
SHABBAT WEEKEND FUN!

JOIN TYNER RELIGIOUS SCHOOL,
BUNK 45 & QUEST FOR A
WEEKEND AT CAMP STORER!

Arrive at Temple Israel on Friday, March 23 at 3:30 pm.
Pick-up at Temple Israel on Sunday, March 25 at 11:30 am.

Cost: \$125 by February 23/\$150 after.
Deadline to register is March 9.

For more information or to register,
please contact Lisa Kaplan 248-661-5725.



After Anatevka

**Monday, February 12, 2018
12 - 1:30 pm**

Author Alexandra Silber will discuss *After Anatevka*, a sweeping historical novel that imagines what happens to the characters of *Fiddler on the Roof* after the curtain falls. A love story for the ages set against a backdrop of some of the greatest violence in European history, *After Anatevka* is a stunning conclusion to a tale that has gripped audiences around the globe.

**COST: \$7 MEMBERS WITH RESERVATION
\$10 NONMEMBERS AND WALK-INS (INCLUDES LUNCH)**

**For more information or to register,
please contact the Education Office at
248-661-5725 or lkaplan@temple-israel.org**

Book sale (\$20) and signing following presentation.

*This adult education program is supported by
The Debbie and Al Iwrey Senior Programming Fund*



GATEWAY TO ONENESS W/CANTOR SMOLASH

Thursdays, February 8 & 22 • 10 - 11 am

This insightful kabbalistic text provides a remarkable glimpse into the structure and flow of the ongoing creative forces that form our world. Come open the hood of the universe and get a look at the engine of light that drives it. **To register, contact Maya at 248-661-5700 or maya@temple-israel.org.**

EDUCATORS' SHABBAT

Friday, February 9 • 7:30 pm

Join us for our annual celebration of Jewish teaching and learning! Honoring our teachers for their years of service. Teacher awards will be presented at services, followed by a sweet oneg.

◀ ASK: AFTER ANATEVKA

Monday, February 12 • 12 - 1:30 pm

ISRAEL MISSION LECTURE SERIES ▶

Tuesday, February 13 & Thursday, March 29 • 7 - 9 pm
Wayne State University Professor Howard Lupovitch will present this fascinating Israel lecture series, open to the public. Each lecture is followed by a meeting for our Spring 2018 Israel Mission participants. RSVP to the Education Office at lkaplan@temple-israel.org or 248-661-5725. See following page for topics.

L'CHAYYIM - WINE MAKING AS A CELEBRATION OF LIFE ▶

Tuesdays, February 13, March 6, April 17 • 7 - 9 pm
These three classes will be designed as a wine tasting and wine making course for newly married couples and young parents. The sessions will include text study, wine sampling, and the chance to ferment, age, bottle, and label wine. Each participant will make 6-8 bottles of privately labeled wines! Taught by Rabbi Bennett.

ISRAEL MISSION LECTURE SERIES

FEBRUARY 13, 2018

TUESDAY · 7-9 PM

The World of the Hebrew Bible

MARCH 29, 2018

THURSDAY · 7-9 PM

Visions of the Jewish State



A LITTLE ART AND A LOT OF FUN!

Tuesday, February 20 • 7 - 8:30 pm

Explore the art of iconic artist Marc Chagall. Add one-part art discussion and one-part hands-on creativity and you'll end up with a wonderful evening. Join local artist and educator **Jane Alkon** as she combines all the elements in this terrific new class. You'll leave with a little bit of art education and a beautiful piece of work you will be thrilled to call your own!

SAVE THE DATES:

ASK: DESIGNING DETROIT

Monday, March 12 • 12 - 1:30 pm

In the early 1900s, Detroit led the nation in architectural innovation. In his latest book, *Designing Detroit: Wirt Rowland and the Rise of Modern American Architecture*, Michael G. Smith describes those advancements. Smith will take us on a journey of Detroit's revolutionary use of methodologies, materials, technologies, and design. Cost: \$7 Members with reservation/\$10 Nonmembers and walk-ins (includes lunch). For more information or to register, please contact the Education Office at 248-661-5725 or lkaplan@temple-israel.org. Supported by The Debbie and Al Iwrey Senior Programming Fund.

PASSOVER WORKSHOP

Tuesday, March 20 • 7 - 8:30 pm

Learn more about Passover as our clergy teaches Passover blessings, traditions, history and more ways to make your Seder a meaningful celebration. Led by Cantor Michaels.

FOR MORE INFORMATION ON ANY OF THESE ADULT EDUCATION CLASSES OR TO RSVP, CONTACT THE EDUCATION OFFICE AT LKAPLAN@TEMPLE-ISRAEL.ORG OR 248-661-5725.

L'CHAYYIM



Wine Making 101

A Celebration of Life

Tuesdays, 7-9 pm

LIBRARIES & MEDIA CENTER



The Temple Israel Archives is a treasure trove of documents, photographs, publications, plaques, posters and much more. Libraries and Media Center Director, Lauren Marcus Johnson devotes many hours each week to sorting and organizing the valuable documents that make up our 75 year history.

Mrs. Murray Matlin, co-chairwoman of the Temple Israel Art Show, 1966. Featuring People Pots artwork.

Want to volunteer in the Archives?

Contact Lauren Marcus Johnson (ljohnson@temple-israel.org) at 248-661-5700 to set-up a time.

▲ **In Review - Guest Author Ellen Fischer:** Children's Author, Ellen Fischer, shared her love of books with our ECC families during the annual Chanukah Magic Moments program. Accompanied by The Count, Grover and Latke the dog puppets, she retold her favorite Chanukah stories, "Latke, The Lucky Dog" and "The Count's Hanukkah Countdown." Many families will continue to enjoy her books as they purchased new and brought well-loved books to be signed by the author

DINNER AND A MOVIE

Thursday, February 1, February 15 • 5 pm

See page 10 for details.

MOVIES AT THE MAPLE

Thursday, February 8 • 10:30 am

See page 10 for details.

MOTHER/DAUGHTER BOOK CLUB



Thursday, February 8 • 6:30 pm

Young adult women (ages 20s-40s) and their mothers (aunts, grandmothers, sisters, and friends are welcome too!) will enjoy an evening of delicious food, great wine and inspiring discussion of the book *Windy City Blues* by Renée Rosen.

Cost is \$18/person and includes dinner, wine and dessert. **RSVP to Randi Simko by February 1 at randi@temple-israel.org or 248-661-5700.** Save the date for the next Mother/Daughter Book Club: Thursday, April 26 - *Leaving Lucy Pear* by Anna Solomon.

PIZZA & PAGES

Sunday, Feb 11 & Mar 11 • 12 - 2 pm

Join Librarian Lauren Marcus

Johnson and 2nd Grade Teacher

Anita Hack in the Hodari Family

Children's Library for stories, crafts, games, and

fun! All 1st-3rd Grade booklovers are invited to

participate. If you love pizza, books, and spending

time in the Library then you'll love this program! A

pizza lunch will be served (\$5/person payable at the

meeting). Students do not need to attend all of the

meetings to participate. **Reservations are required**

by the Thursday before each date. To RSVP, contact

Lauren Marcus Johnson at ljohnson@temple-israel.org

or 248-661-5700.



SAVE THE DATE:

PIZZA & PAGES FOR KINDERGARTENERS ONLY!

Sunday, March 25 • 12 - 2 pm in the Media Center

As an introduction to our children's book club, please

join us for a special session of Pizza & Pages for

Kindergarteners ONLY! **Reservations required. To**

RSVP contact Lauren Johnson at 248-661-5700 or

email ljohnson@temple-israel.org.

REMEMBER TO BE A JEWISH READING STAR!

1st - 3rd Graders read Jewish books from their own

home library and/or books from the Hodari Family

Children's Library. Children read the books with an

adult (parent, grandparent, or other book lover) and

return the forms to their teacher by **April 22, 2018.**

All forms are available in the Hodari Family Children's

Library or from your Religious School teacher, and can

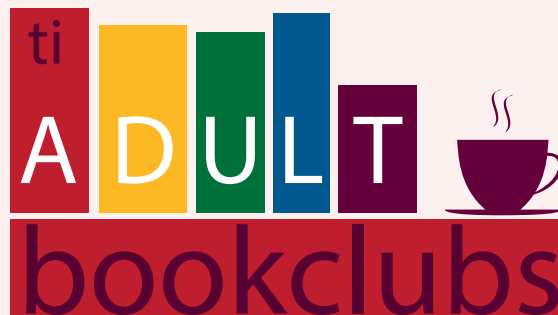
be downloaded from the Temple Israel website (go

to the Media Center & Libraries Resource section). If

you have any questions about the Religious School

reading programs, contact your teacher or Lauren

Marcus Johnson at 248-661-5700 or ljohnson@temple-israel.org. Happy Reading!



Join the Temple Israel Adult Book Clubs! Our professional facilitators and diverse selections are certain to expand your mind, stimulate your intellect, and make for fun and enjoyable discussions.

MISCHLING



The season will continue on

Monday, February 19, 9:45 am

and Tuesday, February 20,

6:30 pm with a discussion of the

book, *Mischling* by Affinity Konar.

The discussion will be facilitated

by Marilyn Gans Schelberg, PhD.

Participants are encouraged to read the selected book prior to the meeting. Copies of the books are available from the Weinberg Family Library and from local public libraries and booksellers. All are welcome! Registration is required. \$14/per session. **For more information, or to register, contact Lauren Marcus Johnson at ljohnson@temple-israel.org or 248-661-5700.**

SAVE THE DATES:

Mar 19/20 – *Dinner at the Center of the Earth* by Nathan Englander

Apr 16/17 – *The Secret Book of Kings* by Yochi Brandes

May 14/15 – *In the Shadow of Alabama* by Judy Reene Singer

THE ROBERT SOSNICK FAMILY LIFE CENTER

SAVE THE DATE



WEDNESDAY, MARCH 7
7 PM • TEMPLE ISRAEL

The Alicia Joy Techner Memorial Parenting Conference presents:

"If Only I Had Known," a panel discussion moderated by Red Wings Announcer Ken Daniels. Speakers will share personal stories with the cycle of addiction. This session will leave you feeling empowered and educated on the challenges we face with our youth today.

For more information or to RSVP contact Kate Boman at kate@temple-israel.org or 248-661-5700.



THE RESTORE FOUNDATION



FOR MORE INFORMATION ON ANY OF THESE SUPPORT GROUPS OR TO RSVP, CONTACT KATE BOMAN IN THE ROBERT SOSNICK FAMILY LIFE CENTER AT 248-661-5725 OR [KATE@TEMPLE-ISRAEL.ORG](mailto:kate@temple-israel.org).

AA - ALCOHOLICS ANONYMOUS

Thursday, February 1, 8, 15 & 22 • 8 pm

CAREGIVER SUPPORT GROUP

Tuesdays, February 6, 13, 20 & 27 • 10 - 11:30 am
When helping you is hurting me... Taking care of someone else as well as taking care of you? Give yourself respite – join facilitator Janice G. Tracht, LMSW, ACSW, BCD and Gloria Beren, LCSW, ACSW in a supportive environment. Sharing one's experience within a group setting enables caregivers to recognize the commonality of their experience while also defining the uniqueness of their situation.

SHARE SUPPORT GROUP

Tuesday, February 6 & March 6 • 7 pm
Join facilitator and Temple Israel member **Melissa Mayerson** and Rabbi Jennifer Kaluzny at this special support group for young parents who have experienced miscarriage, stillbirth or infant loss. For more information contact Melissa Mayerson at melissamayerson_share@yahoo.com or, Rabbi Jennifer Kaluzny at jkaluzny@temple-israel.org. Supported by the Aviva Pearl Herman Memorial SHARE Fund.

DROP-IN BEREAVEMENT SUPPORT GROUP

Thursday, February 8 & 22 • 7 - 8:30 pm
Diane Levy-Rubenstein, LMSW Facilitator
After the death of a loved one, there are so many thoughts, feelings and experiences to deal with. Accepting the death of a loved one requires one to fully experience their grief. All sessions are open to the community and are free of charge. Please call Temple to verify dates as they do change.



The Robert Sosnick
Family Life Center

MS PATH SUPPORT GROUP

Thursday, February 8 • 7 pm Support Group

Thursday, February 22 • 7 pm Potluck

The MS PATH (Positive Attitude Toward Health) meets on the second and fourth Thursday of every month in Classroom 11. This group is designed for those with MS as well as family members and/or caregivers. Contact Ronna Heller at (Home) 248-737-2328, (Cell) 248-330-4632 or email her at rhlbox@me.com for more details on any MS Path Program.

MI SHEBEIRACH BLANKET MAKING DAY

Thursday, February 15 • 10:30 am

Volunteers are needed to help make Mi Shebeirach blankets. These blankets will then be given to those in need of healing prayers when visited by our Clergy/Bikkur Chaverim Team. Coffee and bagels will be provided. This program is supported by The Juanita And George Victor Mishebeirach Blanket Fund.

FOR MEN ONLY, SUPPORT JUST FOR MEN

Thursday, February 15 • 7 pm

The For Men Only group will challenge male stereotypes, and offer participants an opportunity to discuss the very real issues men face. A sense of social isolation, life crises, mental health, spirituality, and other important subjects will be discussed. This will be a 90 minute group facilitated by Dr. David Manchel, PsyD, a psychologist with a practice in Commerce Township.

SAVE THE DATES:

SENIOR ADULT PROGRAMMING

Thursdays • 1:30 pm

April 19 - Matthew Ball, Boogie Woogie Kid

May 17 - WB High School Jazz Band

June 21 - Cantor Michael Smolash

July 19 - Ron Short, Elvis Impersonator

August 16 - Shawn McDonald and Friends

October 18 - Walled Lake Central Choral Group

GOTTA GET TO GEORGE!

Registration is open for Summer 2018!

Join our Michigan campers in the one-of-a-kind life changing experience that is sleep away camp. Through informal Jewish education, the arts, a state-of-the-art waterfront program, an intense ropes challenge course, and great athletic facilities, Camp George offers campers an experience of a lifetime.



For more information contact Kari Provizer, LMSW, ACSW at 248-661-5700. Supported by the Robert Sosnick Family Life Center.



CAMP GEORGE + EXCHANGE RATE = AMAZING SAVINGS

Full Session:

\$4780 Canadian | \$3840 American

A savings* of over \$900!

17 day Nitzotzot/Lehavot - Grades 2-5:

\$3390 Canadian | \$2723 American

A savings* of more than \$600!

*Savings vary depending on the current exchange rate.

Register Now!

George.URJCamps.org

URJ Camp George 416-638-2635



▲ **In Review - SOS Caring Community Holiday Party:** Our heartfelt gratitude to our Caring Community. Our South Oakland Shelter – Holiday Party on Wednesday December 20th was a huge success! All the residents enjoyed a wonderful holiday party and evening. Partially supported by the Shirley and George Agree Caring Community Party Fund.

▼ **In Review - No Temple Family Without A Chanukah:** This year Chanukah was celebrated by many Temple families that never thought they would be able to! As always, the Barbara and Lawrence Millman Family Chanukah Fund and the Jackie Unatin Memorial Chanukah Fund, and our amazing Temple Family was ready to step in and assist our families in need. This year you not only came through, but the response, kindness and generosity were overwhelming! We thank you from the bottom of our hearts.



AFFILIATES - BROTHERHOOD

USHER CORPS

Come to Temple Israel on Shabbat, holidays or for other programs and see the smiling faces of our ushers. Do you have time to give on a Saturday morning? We are looking for some fresh smiling faces to greet our congregants and guests. We also need ushers for other services and special events – whatever works for you! For more information, contact Art Dubin at countryart@comcast.net or 248-931-1509.



MEN'S CLUB DINNER

Thursday, February 8 • 6 pm at Congregation Beth Shalom (14601 Lincoln St, Oak Park)

Join us for the 86th Annual Inter-Congregational Men's Club Dinner, hosted by Congregation Beth Shalom. 6 pm appetizers & cocktails, 6:45 pm kosher dinner. Questions? Contact Art Dubin at 248-931-1509.

BROTHERHOOD RED CROSS BLOOD DRIVE

Sunday, March 4 • 9 am- 3 pm

Contact Dr. Mike Michelson at 248-819-1235 to reserve your spot.

SAVE THE DATE:

TEMPLE ISRAEL ANNUAL GOLF OUTING

Monday, May 21 • Edgewood Country Club
More info to come.

PAY YOUR \$ BROTHERHOOD DUES \$ TODAY!

Please remember your dues support the youth and community-oriented programs that Brotherhood sponsor.

To pay your dues online go to
Temple-Israel.org/Brotherhood, click the
"Online Brotherhood Membership Application" link.

Temple Israel Brotherhood & B'nai Brith present

SHUSHAN HOLD'EM

TOURNAMENT / RAFFLE

An Annual Purim Tradition!

SUNDAY, FEBRUARY 25, 2018

4:00PM - 11:00PM - TEMPLE ISRAEL

Cost: \$50 (174 Shekels) in advance, \$60 at the door.

\$25 (87 Shekels) add-on

Deli Dinner: \$10

RSVP date is February 16th at: temple-israel.org/Shushan2018

Questions? Call Steve Achtman 248-505-3939 or ssshrm@ameritech.net

Rick Sherline 248-613-5400 or rsherline@divbenefits.com

AFFILIATES - SISTERHOOD



*Travel Through the eyes
of an Artist* 

Tuesday, February 13 • Noon at Temple Israel
Join Sisterhood for lunch and learning as we travel
through the eyes of artist Julie Dawson.

\$20 members • \$27 guests
RSVP online: temple-israel.org/Sisterhood
or mail checks (payable to Temple Israel Sisterhood),
to Julie Stern at 560 Grixdale, Waterford, MI 48328

For more information, contact Linda Sherr at 248-880-4227
or actiontours765@gmail.com



SAVE THE DATE
Sunday, April 29th @ 12:15 p.m.
Greenhouse Par-Tea!
Fun for Everyone!!!

Watch your mail for more information



SISTERHOOD GIFT SHOP - ONE STOP SHOPPING!

Our volunteers are eager to help as you shop our amazing selection of gift items & Judaica.

New merchandise arriving daily to enhance and enrich your holidays and special celebrations.

February Special: 30% off Tzedakah Boxes



(must be in stock & over \$25) Gift Shop hours M/T/TH 2-6 pm & Sunday 9:30 am-12 pm (Religious School Days).

You may reach: Lisa at 248-563-3100, Denise at 248-855-4842 or Mary Lou at 248-875-1595. Please do not hesitate to call with any questions or requests for special appointments.

◀ TRAVEL THROUGH THE EYES OF AN ARTIST

Tuesday, February 13 • 12 pm

ROSH CHODESH/CHAI MITZVAH

Tuesday, February 20 & March 13

NURSING HOME BINGO

Wednesday, February 21 & March 21 • 2 pm

SAVE THE DATES:

PASSOVER COOKING DEMO WITH CHEF CAROLE OF THE EPICUREAN GROUP

Tuesday, March 20 • 7 pm

WOMEN'S FREEDOM SEDER

Tuesday March 27 • 6 pm

Led by Temple Israel Clergy & Members of our Sisterhood. Our Passover Seder explores the ancient story of our liberation and exodus from slavery in Egypt and how it compares to modern day enslavement's around the world today. Join us for a thought provoking celebration of our journey towards freedom, learning and social justice as we come together in the fight against sexual harassment.

SPRING BOUTIQUES

Sunday, April 15 • 9:30 am - 3:30 pm

Join us for a great day of shopping over 50 outstanding boutiques, plus our Trifles & Treasures Market. **Now accepting donations of gently used treasures.** For more info contact Barbara Saltz at 248-563-1606 or Margo Goldman at 248-891-6633.



ELECTION LUNCHEON

Monday, April 23 • 12 pm

Featuring WISDOM Panel Discussion; Five Women Five Journeys. Details to come.

GREENHOUSE TEA PARTY

Sunday, April 29 • 12:15 pm

25TH ANNUAL HOUSE TOUR

Wednesday, May 30

6 Beautiful Homes - 1 Amazing Day! More information to come.



SISTERHOOD COOKBOOK - INCREDIBLE SALE!



The sixth edition of Temple Israel Sisterhood's cookbook, *The Fruit of Her Hands* is available for purchase for \$10 or 2 for \$18. It includes over 600 recipes including favorites from previous editions along with heart healthy recipes.

It'll make a nice bridal shower gift, graduation gift, or just because. Cookbooks are available in the Gift Shop or contact Laurie Blinder at 248-851-6788.

ANNOUNCING A CHOICE OF TRIBUTE CARDS!

Sisterhood is pleased to offer a choice of tribute cards to mark your special occasion or remember someone in a time of need. In addition, recipients of tribute contributions of \$50 or more will now receive a beautiful certificate letting them know of your generosity.



Learn more or purchase online at Temple-Israel.org/Sisterhood or contact Jodie Polk at chefjimjo@yahoo.com

A special thank you to Jessica Polk for the beautiful tribute card photographs.

Mishloach Manot

Purim 5778



Fulfill the Mitzvah of Mishloach Manot!

On Purim we emphasize the importance of Jewish unity and friendship by sending gifts of food to friends and family.

Sisterhood is excited to present you with a wonderful opportunity to fulfill this mitzvah. Send delicious treats with your Purim greetings to our Sisterhood Board, Temple Clergy & Staff or Family & Friends!

Each recipient will receive a beautiful box of hamentashen, baked goods & other treats along with a lovely note including a list of those who have donated toward their gift.

Great way to thank those that serve our Sisterhood & Temple and let family & friends know you are thinking of them at Purim!

Go to: temple-israel.org/Sisterhood for details on how to fulfill this Mitzvah!

For questions contact Jodi Mills at 248-798-8423 or jodimmills@sbcglobal.net

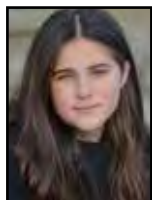
Thank you for being a part of this meaningful fundraiser! Your participation allows us to continue to support our Temple, Youth and Community.

LIFE CYCLE EVENTS

B'NAI MITZVAH

Torah Portion: Yitro

Friday, February 2 • 8 pm Sanctuary Service



Mollie Elisabeth Weiner, daughter of Kara and A.J. Weiner; grandchild of Annette and the late Lee Friedman and Karen and Jerry Weiner. Mollie is a student at West Hills Middle School. She enjoys playing tennis. For her mitzvah project, Mollie volunteered at Temple Israel where

she assisted in providing the meals for the residents of South Oakland Shelter. In addition, Mollie gave her time helping at a Thread event and raised funds for the Almost Home No Kill Animal Shelter.

Torah Portion: Mishpatim

Friday, February 9 • 8 pm Sanctuary Service



Nolen Max Kovan, son of Carrie and Eric Kovan; grandchild of Barbara and the late Dr. Thomas Kovan and Marlene and Ed Malkin. Nolen is an honor student at Berkshire Middle School. His hobbies and interests include tennis, basketball, golf and attending Camp Tanuga. For his mitzvah

experience, Nolen organized a GoFundMe page for the Jewish Federation of Miami to benefit the South Florida hurricane victims. In addition, he donated to Variety Children's Charity and volunteered at Temple Israel for the Labor Day Picnic, Pizza & Pages and the Quest Program.

Torah Portion: T'rumah

Saturday, February 10 • 6 pm Sanctuary Havdalah Service



Jayden Marie Roth, daughter of Renee and Jaimey Roth and Sheryl Roth; grandchild of Janie and the late Michael Roth, Diane and Phil Dmytryszyn, Wendy and David Bowen; great-grandchild of Karen and Gary Lobdell. Jayden is a student at West Hills Middle School. She enjoys

soccer, horseback riding, wakeboarding and snowboarding. As part of her mitzvah project, Jayden donated her time with the Jewish Federation of Metropolitan Detroit, Tikkun Olam Volunteers and Women's Philanthropy as well as PJ Library to create packages for children who were in the hospital this past holiday season. Additionally, Jayden volunteered at the Temple Israel Tyner Religious School.

Friday, February 16 • 8 pm Sanctuary Service

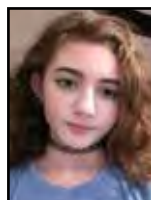


Jessica Rose Otis, daughter of Elise and Randy Otis; grandchild of Shelly and Howard Jacobs, Diane Otis and the late Maurice Otis. She is a student at West Hills Middle School. Jessica is passionate about dance and enjoys attending camp. She is most proud of her mitzvah project

that raised funds for hurricane victims in Florida. Additional projects include volunteering at the Temple Israel Labor Day Picnic and at Camp Hermelin.

Torah Portion: T'zaveh

Saturday, February 24 • 11 am Chapel Service



Chloe Jae Kopnick, daughter of Jennifer Kopnick and Ron Kopnick; grandchild of Fern and Jack Kopnick, Bob Clausen and the late Helen "Mimi" Clausen. Chloe is a student at Warner Middle School. Her hobbies include piano and percussion as well as caring for her turtle, bird, cat and two

dogs. Chloe gave her time volunteering at Temple Israel for Senior Shabbat, the Labor Day Picnic, packing Mikvah bags and helping out in the office. In addition, she volunteered at the Love of Cats Shelter and at her sister's school.

TEMPLE FAMILY

Weddings

Hadas Marisa Corey, daughter of Lisa & Louis Corey, to Thomas Andrew Benhamou, son of Sharon Lederer and Elias Benhamau.

Melissa Marie Snyders, daughter of Sally & Douglas Snyders, to Brandon Joshua Potash, son of Andrea & Harry Potash.

Births and Blessings

Isabel Jade Burnstein, daughter of Stephanie & Kevin Burnstein, grandchild of Jill & Mark Eisenberg and Maxine Burnstein and Stuart Burnstein z'l.

Winter Lilly Goodman, daughter of Hailey & Roger Goodman, grandchild of Enid & Gary Goodman and Souad & Hamid Orow.

Ethan Weisbrod Slutsky, son of Alexis & Corey Slutsky, grandchild of Michele & Lawrence Slutsky and Beth Arnow & Steve Weisbrod.

Alexis Michelle Rott, daughter of Natalie & David Rott, grandchild of Carol & Sheldon Rott and Helena Shirinsky and Alexander Shirinsky.

In Memoriam

Carol M. Auslander; Wife of Robert Auslander z"l; Mother of Michelle Auslander; Stepmother of Beth Auslander and Daniel Auslander; Sister of Michael (Helene) Cohen; Sister-in-law of Dr. "Didi" (Richard Colton) Cohen-Colton; Aunt of Justin (Jayme), Kristie, Adam and Abby; Great-aunt of Lily and Caleb.

Charlene and Dr. Eugene Axelrod; Parents of Dr. Robert (Chau) Axelrod and Dr. Deborah (John Shreck) Axelrod; Grandparents of Naomi and Noah Axelrod, and Samuel and Hannah Shreck; Siblings of Dr. Linda Golumbia, Dr. Richard Axelrod, Alvin and Ernelle Leong, and Ronald and Pamela Leong.

Arnold Becker; Father of Erica "Ricki" Becker, Josh Becker, and Pam Becker; Grandfather of Ari Siesser; Brother of Carl G. (Mary) Becker.

Barbara Goldfarb Begun; Wife of Paul Begun z"l and Albert Goldfarb z"l; Mother of Bruce Goldfarb; Step-mother of Karen (Renzo) Fidani, Grandmother of Jonathan (Amoreena) Fidani, Joshua Fidani; Great grandmother of Luca and Jude Fidani.

Carolyn Bendersky; Wife of Eugene Bendersky z"l; partner to the late Bob Kaufman. Mother of Paul Bendersky and Janice Bendersky; Aunt of Nancy and Ted Schwartzenfeld, Elaine (Mitchell) Wolf and Stanley Feldman.

Brenda Beron; Mother of Shelli (Scott) Lempert, Dr. Phillip (Tricia) Beron; Sister of Carol (Stewart Shear) Kay; Grandmother of Averl Beron, Jordyn (fiancé Weston Davis) Lempert and Mara Lempert; Cousin of Mark (Marci Grossman) Lempert.

Mildred Bishop; Wife of Robert Bishop z"l; Mother of Melanie (Arthur Solomon) Bishop and Alan Bishop; Grandmother of Jessica Lubek, Shayna Klein, Noah Cohen, Stacy, Chad, Adam, Jacob and Nicole Bishop, Aaron Solomon; Great-grandmother of Samantha and Jonah Lubek, Brooke and Abby Klein, Molly and Brady Wilson, Jaxon and Benjamin Bishop, Emily Solomon.

Kenneth William Chaiken; Husband of Margaret Chaiken; Father of Ryan Chaiken; Brother of Ronald Chaiken, Dennis (Julie) Chaiken and Cynthia Chaiken.

Ronald Chaiken; Husband of Fran Chaiken z"l; Father of Robin Chaiken; Brother of Dennis (Julie) Chaiken and Cynthia Chaiken; Father-in-law of Kelly Chaiken; Grandfather of Jacob, Jolie and Jayna Chaiken.

John "Artiste" Childress; Husband of Colleen Thompson Childress; Father of Breanne Rose Childress, Addison Harper Childress, Jordan William Childress and Jake Riley Childress; Brother-in-law of Laura (Andrew "Andy") Koziol; Grandfather of Evelyn Rose Poore; Son-in-law of Dennis and Sandy Thompson; Nephew of Kelly Dale Childress and Lillian Childress.

Laurie B. Cohen; Wife of Jeffrey Cohen z"l; Mother of Dr. Matthew (Stacy) Cohen and Jamie Cohen; Grandmother of Sophie Cohen; Sister of Gary (Gayle) Granat and Diane (Howard) Becker; Daughter-in-law of Lois Cohen; Sister-in-law of Jay Cohen, Geri Cohen, Lee (Cathy) Cohen, Andrea and Elliott Nachwalter.

Gerald "Jerry" David; Husband of Florence David z"l; Father of Miriam (Dr. Jeffrey "Jeff") Forman, Marilyn (Dr. Ira) Bernstein, and Steven (Maureen) David; Grandfather of Adam (Marianna) Forman, Tara (Jay) Hack, Joshua (Norah Rexer) Forman, Joanna (Eric) Wisotsky, Andrew Bernstein, Sarah (Glenn) Gordon, Julia (Andrew), Shuster and Katie David; Great-grandfather of Misha, Ori, Jonah, Jared, Evan, Joshua and Cyrus.

Nelson Dembs; Husband of Ann Dembs z"l; Father of Dennis (Sandra) Dembs and Marcia Bell; Brother of Faye Jacobs; Brother-in-law of Benjamin (Annie) Friedman; Grandfather of Lauren (Randy) Lesson, Ryan (Lindsay) Dembs and Bethani (Danny) Farago; Great-grandfather of Corey, Joshua, Jillian, Dylan, Harrison and Andrew.

Gary W. Domino; Husband of Jan Domino; Father of Jenny (Noah) Birmelin and Jill Domino; Grandfather of Kinley and Molly Birmelin; Son-in-law of Shirley Plotnik; Brother of David (Mary) Domino.

Doris A. Enfield; Wife of Bruce Enfield z"l; Mother of Tim (Diane) Enfield, Mark (Shari) Enfield and Sterling Enfield; Grandmother of Daniel, Sara, Justin, Russell, Parker, Carson, Chase and Cooper.

Linda Erlich; Wife of Joe Erlich; Mother of Craig (Renee) Erlich, Jennifer (Eric) Rosenberg, Paige Erlich; Grandmother of Jonah, Sophie, Gabriel, Jesse, Molly and Levi; Sister of Joan (Paul) Feldman, Susan Hopps, Jay (Sue) Miller; Sister-in-law of Karen and Rick Erlich and Sue and Shel Erlich.

Marilyn Franklin Eichelbaum; Wife of Marvin Eichelbaum; Mother of Dennis (Julie) Eichelbaum, David (Katie) Eichelbaum and Susan (David) Goldstein; Sister of Robert "Bob" (Marjorie) Franklin.

Lester Feldman; Partner of Sandy Miller; Father of Eric Feldman and Darren Feldman; Grandfather of Katlin Feldman and Jayden Feldman; Beloved by Sandy's children, Amy (Dr. Alan) Schram, Lezlie Solomon, Sammy Solomon; Grandfather of Spencer and Connor Schram, Alexa and Madison Bernstein;

Sandra Fields; Aunt of Ernie (Sandra) Hoffman, Lynn (Donald "Don") Apel and Steven (Andrea) Zatkin.

William "Willy" Goose; Husband of Karen Kahn Goose; Father of Fritz (Janos) Pesti; Brother of Celia Roth, Nettie Biegal, Shirley Katz, Rose Chankin, Ann Schonberg, Max Goose, Hymie Goose and David Goose; Brother-in-law of Marci (Larry) Coggan, Sarai (David) Bowser and Douglas (Dee Dee) Kahn.

LIFE CYCLE EVENTS (CONTINUED)

Marsha Harris; Wife of Floyd Harris; Mother of Stacey (Karen) Harris, Josh (Moirra) Harris; Grandmother of Emily Harris; Aunt of Lynn (Marc) Rosen, Shelley (Ron) Mochizuki, Bob (Anne) Halper, John (Lisa) Levy, Steven (Susan) Levy, Karen (John) Butterfield; Sister of Janet (Allen) Halper and Marilyn (Chuck) Levy.

Phyllis Hendin; Wife of Richard Hendin; Mother of Laurie (partner Lee Jackson) Brooks and Amy Hendin Lipson; Grandmother of Spencer Brooks, Natalie Brooks and Ali Lipson; Sister of Naomi (Marshall) Schwartzman; Aunt of Dr. Lisa Schwartzman and Dr. Marcy Schwartzman.

Jerome "Jerry" Kanter; Husband of Sherry Kanter; Father of Jason (Rebecca) Kanter and Joshua (Allie) Kanter; Grandfather of Eleanor Kanter; Brother of Dan (Partner Elizabeth Chilton) Kanter and Elizabeth (Eric) Groskind; Son of Austin (Faye) Kanter.

Virginia "Ginny" Kingsley; Sister of Fred (Judy Shewach) Stevenson.

Carl Kirschner; Husband of Donna Kirschner z"l; Mother of Nancy (Jim) Campbell, Connie Atia-Ahrens, JoAnn Atia, Andrew Kirschner, David (Bella) Kirschner; Grandmother of Amy (Andy) Beach, Dyan (Brian) Wardwell, Matt Campbell, Geoff (Laura) Ahrens, Colleen (Brett) Walker, Yechiel Kirschner and Dovi Kirschner; Great-Grandmother of Eva, Leila, Devon, Jenna, Justin and Kaden; Sister of Renee Kirschner.

Martin Koby; Husband of Florence Koby; Father of Myles B. (Betty) Koby, Allene H. Koby, Glenda J. (Bruce Spiegel) Koby, Pamela S. (Thomas Bopp) Koby; Grandfather of Jay Koby, Ross Koby, Julia Spiegel, Jeannie Spiegel, Sara (Kelly) Delk, Daniel (Samantha) Whitney; Great-grandfather of Nathan Delk, Whitney Delk, Ryan Whitney, Stella Whitney, Alayna Whitney; Brother-in-law of Lynda Koby, Louis (Sara) Brooks; Uncle of Amy (Andrew) Fox, Susan (Scott) Lindquist, Nancy (Matt) Hutchinson, Jason (Catherine Jun) Brooks, Daniel (Sara Gold) Brooks; Great-uncle of Sophie, Mya, Asher and Lilah.

Annette Lash; Wife of Bernard Lash. Mother of Stacy (Jason) Thompson and Steven Lash; Grandmother of Nathan Thompson.

Elissa Leider; Wife of Harry "Hal" Leider; Mother of Cantor Allen Leider and Shari (Mark) Enfield; Grandmother of Daniel Enfield, Sara Enfield, Melissa Leider and Jennifer Leider.

Honora Lipson; Wife of Alex Lipson z"l; Mother of Kenneth "Ken" M. (Nancy) Lipson and Ronna (Harvey) Heller; Mother-in-law of Debra Lipson; Grandmother of Aaron (Ali) Lipson, David (Sara) Lipson, Risa (Ryan Toohey) Heller, Melissa (Shoshana Seid) Heller-Seid, Mark (Kat) Lipson, Kevin Lipson and Brian Lipson; Great-grandmother of Max and Stella Lipson, Josh and Alex Lipson, Vivian and Ezekiel Toohey; Sister of Carl (Sandra) Gilbert.

Max Markzon; Husband of Muriel Markzon z"l; Father of Joan (Jeff) Climie, Caryl (Mark Eidelson) Markzon and Barbara (Len Bale) Goode; Grandfather of Brad Fahlgren, Jordan and Collin Eidelson, Mike Goode, and Lisa (John) McHugh; Great-grandfather of Maple McHugh.

Caroline Johanna Miller; Wife of William Miller z"l; Sister of Emily Somlyo; Sister-in-law of June Somlyo; Aunt of Lauren (Michael) McGowan, David Somlyo, Barry Somlyo and Pamela (John) Lobsiger. Great-aunt of Jane and Jack McGowan, Katherine and Andrew Somlyo, Rachel and Rebecca Somlyo, and Nikki Noder.

Calvin "Cal" Moss; Husband of Cynthia Moss; Father of Kenny (Sabrina) Moss, David (Sharon Mayone) Moss, Michele (Michael) Colton, Sheri Kaplan, Alan (Brenda) Ferber, Audra (Daniel) Halprin, and Melissa (Lawrence) Kovacs; Grandfather of Laura (Steven) Heravi, Jordan (Amy Felty) Moss, Clayton Moss, Ethan Moss, Leah Moss, Henry Moss, Eric, Adam and Kyle Colton, Kayla Kaplan, Jacob, Faith and Samuel Ferber, Landon and Brooke Halprin, Aaron Strager, Lauren Strager, Spencer Slayden, Nolan Kovacs and Cameron Kovacs; Great-grandfather of Violet and Jackson Heravi, and Cohen and Eli Moss.

Henri Mouradian; Husband of Dianne Mouradian; Father of Daniel (Vivian) Mouradian, Karen (Daniel) Diskin, and Marc (Jennifer) Mouradian; Grandfather of Rose, Shayna and Aram Mouradian, Julia, Ilana and Eric Diskin, and Ryan and Charlie Mouradian; Brother-in-law of Arlene Wenokur and Michael (Claire Lichtenstein) Gold.

Joseph Newman; Husband of Eleanor Newman z"l; Father of Barbara Zack, Karen (Dana) Siegenberg, Cathy (Mitchell) Merzin, Teri (David Willard) Chernoff; Grandfather of Michelle (Matt) Prinz, Leslie (Mitchel) Katz, Alex Merzin and Max Merzin; Great-grandfather of Austin Prinz and Ariella and Eli Katz.

Maurice W. Otis; Father of David (Bonnie) Otis, Randy (Elise) Otis, Michelle (Lawrence) Levy, and Jeffrey (Ali) Otis; Grandfather of Bradley, Kyle and Cami Otis, Ean, Ryan and Jessica Otis, Maverick and Jett Levy, Jordyn and Mack Glass; Brother of Bernard Otis; Also, Companion of Carol Hollmann; Mother of his children Diane Otis.

Ruth Rader; Wife of Charles Rader z"l; Mother of Sheldon (Bonnie) Rader and Judy Vine; Grandmother of Betsy (Howard) Golan, David (Stacia) Share, Michael Vine (Bill Getreuer), Sandra Vine and Allen Vine; Great grandmother of Nicole, Jason, Micah, Ari and Jordan, Samantha and Evan Vine.

Helene D. Robbins; Wife of Merton Robbins; Mother of Amy (George Dickstein) Robbins-Dickstein, Linda (Brad) Hammer and Greg (Michelle) Robbins; Grandmother of Brian Dickstein, Margo Dickstein, Laura Hammer, Jon Hammer and Cara Robbins.

Gertrude Paul Ross; Wife of Leon Paul z"l and Al Ross z"l; Mother of Jackie Wolnowski and Evelyn Diskin; Grandmother of Mark (Terri) Wolnowski, Benjamin Wolnowski, Lawrence (Meghan Martin) Diskin and Matthew Diskin; Great-grandmother of Jacob, Maia and Julian.

Milton Rotenberg; Husband of Terry Rotenberg z"l; Father of Marcie (Isaac) Adery, Stuart (Kathy) Rotenberg, Robert (Sheri) Rotenberg; Grandfather of Estee Adery, Ruben (Laura) Adery,

Josh Rotenberg, Allie Rotenberg, Erin (Casey) Koppelman, Jeff (Shanna) Rotenberg and Lainie (fiancé Erick Goihman) Rotenberg; Great-grandfather of Ava Sloane Koppelman and Brody Taylor Koppelman; Brother of Phyllis Deytshe.

Joseph Rothenberg; Husband of Sheila Rothenberg; Father of Noah (Laura) Rothenberg and Dane (fiancée Julie Sahwany) Rothenberg; Grandfather of Benjamin and Leo Rothenberg; Brother of Hetty (Zack) Davies and Ellie Gersten; Son-in-law of Sidney Ross; Brother-in-law of Thea Kumove.

Patricia "Patti" Schlafer; Mother of Lori (Kevin) Marvin and Jennifer (Jeff) Stuppy; Daughter of Virginia Jacobs; Grandmother of Alex, Joshua, Zoe, Miles, Darby and Cooper; Great-grandmother of Ashton; Sister of Gary (Dianna) Jacobs and Linda (William Smaller) Sherman; Aunt of Lisa (Shawn) Stearn, Tracy (Allan) Weitzman, Jenna Jacobs and Morgan Jacobs.

Judi Schram; Wife of Brad Schram; Mother of Zachary Schram, Dr. Justin (Kate Zyskowski) Schram, and Dr. Alison "Ali" (Dr. Daniel "Danny" Gorovets) Schram; Grandmother of Eden Gorovets; Sister of Linda (Jeffrey) Golding and Jeffrey (life partner Kimberly Davis) Rapoport; Sister-in-law of Douglas (Lynette) Schram, Debra (Shalom) Friedman, and Walter (Kim) Schram.

Abraham "Abe" Seiderman; Husband of Simona Seiderman; Father of Rachel Seiderman, Sarah Seiderman, and Daniel Seiderman; Brother of Marie (Ron) Levy and Sally (Doug) Dovitz; Brother-in-law of Gary (Judy) Brevoort, Connie Herman, and Michelle Brevoort-Wolf; Uncle of Colman Reaboi, Alicia Reaboi, Nicole (Noah) Lander, Alisha (Mitch) Greenwald, Zachary Wolf, Zachary Dovitz, Marissa (Parker) Klein, Lauren Herty, Mollie Herty, Breanna Wolf and Shoshana Herty; Great Uncle of Shauna Heath, Leo Reaboi, Luke, Harlow, and Nash Lander, Leighton and Cameron Greenwald and Charlotte Klein.

Sheila R. Shayne; Mother of Joel (Ruth) Shayne, Glenn Shayne and Terri Misek; Sister of Richard Marks and Barbara Kolb; Grandmother of Benjamin (Ashley) Shayne, Dorina (Nolan) Burns, Joshua Krafchick, Sari Misek; Great-grandmother of Gabriel and Elliana Shayne.

Dr. Bernard J. Shapiro; Husband of Marcia Shapiro; Father of Dr. Jeffrey (Michelle) Shapiro, Bruce (Sharon) Shapiro and Dr. Paul Shapiro (Jennifer Shapiro); Grandfather of Rachel (Michael) Schneider, Elyse (fiancé Eric Frehsée) Shapiro, Rikki Shapiro, Samuel Shapiro, Randee Shapiro, Alec Shapiro, Jonathan Shapiro and Mia Shapiro; Great-grandfather of Eli Schneider.

Marjorie Shuster; Wife of Barnett Lazarus z"l and Julius Shuster z"l; Mother of Judy (Greg) Miller, Leah Hadassah "Laura" (Hershel "Harold") Shudnow and Katie (Marty) Price, Gail (Steve) Cobb & Family and Jerald (Debbie) Shuster & Family; Grandmother of Sam Miller, Elizabeth Miller, Aviva Miller, Lieba (Tzadok) Picker, Berel (Zahava) Shudnow, Bennett Price, Elijah Price and Alexa Price; Great-grandmother of Devora, Yehudis and Nechama Chana; Sister-in-law of Edith Lazarus.

Norman Shwedel; Husband of Zelda Shwedel z"l; Father of Dr. Steven (Joyce) Shwedel; Grandfather of Marcy (Ian) Burnstein, Stacy Shwedel and Dr. Scott (Jessica) Shwedel; Great-grandfather of Grant, Becca, Leah and Seth; Brother of Harold Shwedel, Harold Smith, Leo Shwedel, Dr. Fred Smith, Ben Shwedel, Sylvia Schlesinger and Charles Shwedel; Brother-in-law of William Hamburger.

Evelyn Starman; Wife of Jack Starman z"l; Mother of Carole DeRoven, Shelley (Thomas Onsrud) Starman-Onsrud, Cindy Starman; Grandmother of Randall (Marcey) DeRoven, Robin (Dave) Greer, Alyson (Michael) Strickland, Jeff (Jenn) Onsrud, Jay Friedman and Brian (Robin) Friedman; Great-grandmother of Allysa (Jon) Hopkins, Annabella, Sophie, Rachael Hauck, Ryan Hauck, Charley Strickland, Jack Strickland, Eva Onsrud, Lawson, Stella and Liv Friedman; Great-great-grandmother of Jace Hopkins.

Charles Stone; Husband of Barbara Stone z"l; Father of Martha (Kevin Murphy) Stone, Kathy Stone (Dr. Brian) Levitt, Douglas (Andrea) Stone and Ruth Stone (Robert) Gorman; Grandfather of Joseph and Elias Murphy, Noah and Kateryna Stone, Julia, Lily, and Sydney Gorman, and Gregory Levitt; Brother-in-law of Susan (Kenneth) Lynn.

Jeff Stulberg; Husband of Kelly Stulberg; Father of Zachary Stulberg and Alex Stulberg; Son of Dr. David (Nancy) Stulberg; Brother of Sheri (Dr. Abe) Slaim, Dr. Tracey (David Dulberg) Stulberg, Jim (Claudia) Stulberg, Julie (Dave Rubenstein) Stulberg, Neal (Kristen) Stulberg; Son-in-law of Robert and Patti Zarzycki; Brother-in-law of Kimberly Zarzycki and Krissy (Brian) Mendenhall.

Ellen Lee Tucker; Wife of Jack Tucker; Mother of Allie Tucker and Scott Tucker; Daughter of Ilene Gittleman; Sister of Ted (Barbara) Gittleman and Shelley Rossmoore; Sister-in-law of Doreen Schwartz and Steve Tucker.

Joseph Michael Wayne; Father of Jerry (Amy) Wayne.

Joyce S. White; Wife of Robert J. White z"l; Mother of Jimm (Lillian) White, Sharron (John) Blanchett, Michael (Carla) White and Mari (Ken) Hanes; Aunt of Roger (Cindy) Bingham and Phyllis Bingham.

Claire Winnick; Mother of Robert (Wendy) Winnick and Karen (Bruce) Gilbert; Grandmother of Brian (Gloria Tsang) Winnick, Julie (Ryan) Richer, Elise (Edmund) Aronowitz, Bradley Gilbert; Great-grandmother of Lennox Norman Winnick, Isaac Maxwell Aronowitz and Camila Diane Richer.

Sol Winkler; Husband to Shoshana Winkler; Father of Alex (Debra) Winkler and Lillian (Lee) Schostak; Grandfather of Edward Winkler, Heather Clement, Michael (Alexis) Schostak, Dr. Steven (Jennifer) Schostak, Rachel (Shane) Engisch, Jason (Hoda) Winkler and Alexander J. (Abigail) Malischostak; Great-grandfather of Hayley Schostak, Benjamin Schostak, Harmony Engisch, Ariya Schostak and Arieus Engisch.

TRIBUTES

ADMINISTRATOR'S DISCRETIONARY FUND

For charitable purposes.

In Honor Of:

In appreciation of Rabbi Harold Loss; In appreciation of Kari Provizer; In appreciation of Temple Israel – Walter Koziol

In Memory Of:

Norman Shwedel – Lynn Bigelman

GEORGE & SHIRLEY AGREE CARING COMMUNITY FUND

Provides birthday parties for residents of nursing homes, orphanages, and shelters.

In Honor Of:

Special birthday of Arlene Agree – Jody & Marshall Sack

In Memory Of:

Brenda Beron – Arlene Wenokur

Geoffrey Eaton – Chickie Dwoskin

David Margolin – Arlene & Rick Agree

Abraham Seiderman – Louise & Steven Spector

DONNA & ALLAN APPLE FUND FOR CHILDREN WITH SPECIAL NEEDS

Provides madrachim support for children with special needs.

In Honor Of:

Mazel Tov to Donna & Jack Belen on the Bat Mitzvah of your Granddaughter – Roz & Leon Levine

20th Wedding anniversary of Bonnie Brenner & Earl Rudner – The Apples

In Memory Of:

Ronald Chaiken; Linda Erlich – Nancy & Jim Jonas

Geoffrey Eaton – Donna Schwartz

Joyce White – Barbara & Steve Gutman

SUSIE F. ARNOLD CHOIR FUND

Provides funding for the Shabbat Singers Choir.

In Memory Of:

Elissa Ann Leider; Irving Steinberg – Janie & Rob Starkman

DAVID & JEAN BRENNER MEMORIAL SCHOLARSHIP FUND

Provides a graduating senior from the Temple Israel High School with a stipend to purchase textbooks.

In Memory Of:

Milton Rotenberg – Judy Mintz

Solomon Margolis – Judy & Richard Mintz

Marking Yahrzeit Of:

Dani Brenner; David Brenner – Judy & Pepper Mintz

MARLENE BUDMAN REMEMBRANCE GARDEN FUND

Plants spring flowers annually on the grounds of Temple Israel.

In Honor Of:

Maze Tov on the birth of Lyla Sloan – Ellen & Marc Whitefield

Marking Yahrzeit Of:

Stevie Neuman – Shari & Stanley Finsilver

COURTNEY LISA CANTOR ISRAEL TRAVEL SCHOLARSHIP FUND

Provides funds for youth travel to Israel.

In Honor Of:

Bat Mitzvah of Carly Belen – Margie & Michael Hirsch

Bat Mitzvah of Sydney Gartrell – Harriet Trager & Herbert Cohen

95th Birthday of Bernice Linden – Sylvia Bershad & Family

In Memory Of:

Courtney Cantor – Judy & Irving Blau

Mark Klinger; Nettie Rothenberg – Erin & Marc Young

Honora Lipson – Sherry Cantor

Judi Schram – Sherry Cantor & Jaime & Mike Ben & Family

CANTORS' DISCRETIONARY FUND

For charitable purposes.

In Honor Of:

In appreciation of Cantor Neil Michaels – Eden, Kevin, Skylar & Zachary Elbinger; Brett, Charlie & Frankie Finsilver; Sarah Gottlieb & Family; Jennifer & Ryan Schneider

Mazel Tov to the Smolash/Green Family – DeDe & Jerry Weinberg

In appreciation of Cantor Michael Smolash – Deborah & David Elias; Lisa & Matthew Howard; Sue Simon & Art Berlin

Mazel Tov to Cantor Michael Smolash on your 13th Anniversary at Temple Israel – Elaine & Bob Appel; Harriett & Morton Freedman; Norrine & Mel Freeman; Mike Goldfine; Jo Ann & Tom Hornsten; Alicia & Paul Tisdale

Mazel Tov to Emma Trivax – Nancy & Rick Rosenthal

In Memory Of:

Brenda Beron – Harriet Trager & Herbert Cohen

CARING COMMUNITY FUND

Supports the programs of Temple Israel's Caring Community.

In Honor Of:

Speedy recovery of Elaine Blumenfeld; Speedy recovery of Steve Goodman – Caryn & Harold Rothenberg & Family

In appreciation of Mr. & Mrs. Harold Fried; Speedy recovery of Jim Marks;

Mazel Tov on the engagement of Rachel & Brandon; Special birthday of Nancy Swedler – Carolyn & Steven Marks

Bat Mitzvah of Sydney Harker – Karen Farber

In appreciation of Hilary King – Kari Provizer

In honor of Susan Mackay – Marni Blomquist & Larry Mastbaum

Speedy recovery of Melvin Menuck – Carolyn & Steven Marks; Yolanda & David Tisdale

In appreciation of Kari Provizer; In appreciation of Temple Israel Family – Sandy & Dennis Thompson

Bar Mitzvah Zachary Slomovitz – Yolanda & David Tisdale

In Memory Of:

Jack Adelman – Caryn & Harold Rothenberg & Family

Paul Sholem Amber; Sylvia Weider Amber – Betty Amber & Rhonda Amber

Brenda Beron – Raechel & Lenny Nagel; Donna & Philip Rosen; Barb & Shel Sherman; Paula & Harold Taub & Sharyl & Alan Ackerman

Gerald David; Dorothy Frank; Leonard Siegal – Harold & Caryn Rothenberg

Geoffrey Eaton – Andrea & Rob Levy

Linda Erlich – Linda & Murray Feldman

Andrea Katzman – Jill & Jules Goldman

Virginia Kingsley; Joseph Newman; Jeff Stulberg – Joey Roberts & Family

Evelyn Lipitz – Liz & Bill LaKritz; Donna & Robert Klein

Honora Lipson – Carolyn & Steven Marks; Caryn & Harold Rothenberg

David Margolin – Liz & Bill LaKritz; Caryn & Harold Rothenberg

Solomon Margolis – Caryn & Hersh Rothenberg; Mindy & Buzz Wachler

Beloved Father of Tracy & Mark Menczer – Leslie & Mark Kohn & Family

Maurice Otis – Andrea & Rob Levy

Melvin Rode – Shelia & Dan Schiffer

Milton Rotenberg – Joey Roberts & Family; Caryn & Hersh Rothenberg;

Julie, Paul, Bradley, Brandon & Jessica Verona

Judi Schram – Donna & Michael Chaben; Liz & Bill LaKritz; Caryn & Harold

Rothenberg; Yolanda & David Tisdale

Abe Seiderman – Julie & Larry August

Norman Shwedel – Janice & Arnie Tracht & Family

Hope Steinberg – Marci & Paul Zeman

Irving Steinberg – Illeene Zate

Robert Willow – Carolyn & Steven Marks

Claire Winnick – Wendy & Robert Winnick

John Zumbrunnen – Ruth Beresh

Marking Yahrzeit Of:

Fay Eidelman; Morris Eidelman – Lynn & Jeff Aleman
Isabella Levitt; Hiram Perlmutter – Gail Perlmutter
Alfred Lipshaw – Jackie Lipshaw

CHAI DEVELOPMENT FUND

Supports Temple Israel's Building Fund expenses.

In Honor Of:

Special birthday of Beverly Krause – Michele & David Colburn

DOROTHY & ARNIE COLLENS FAMILY EVENT FUND

Provides funding for family programming.

In Honor Of:

Mazel Tov to Julie Bagley & Ross Sandelius; Speedy recovery of Danny Kaplan – Dorothy & Arnie Collens

Mazel Tov to Donna & Jack Belen on the Bat Mitzvah of your granddaughter Carly – Karen & Phil Cohen

Mazel Tov to the Collens Family on the Bat Mitzvah of Morgan – Karen & Phil Cohen; Sue & Danny Kaplan

In Memory Of:

Eve Arno – Rob Starkman

Gary Domino – Carol Plotnik

Linda Erlich; Virginia Kingsley – Dorothy & Arnie Collens

JOSEPHINE & HARRY COLTON SHABBAT B'YACHAD AND COLLEGE FUND

Provides a "First Shabbat" dinner to families of newborn or adopted children and college packages.

In Memory Of:

Carole Auslander; Linda Erlich – Didi & Richard Colton

Geoffrey Eaton – Judy Colton

CONCERT/LECTURE FUND OF TEMPLE ISRAEL

Assists in the support of concerts and lectures at Temple Israel.

In Honor Of:

Mazel Tov to Cantor Michael Smolash on your 13th Anniversary at Temple Israel – Sharon & Jay Daitch

In appreciation of Temple Israel Clergy & Staff – Robert Miller

In Memory Of:

Hy Blinder – Eden & Kevin Elbinger

Gertrude Ross; Dr. Ronald Trunsky – Judy Trotsky

Marking Yahrzeit Of:

Michael Yendick – Bernice & Albert Yendick

ETHEL & ROBERT DANTO CHILDREN'S LIBRARY & MEDIA CENTER FUND

Provides annual support for the Hodari Family Children's Library and Media Center.

In Memory Of:

Charles Stone – Pat & Bob Baer

ARTHUR DUBIN CHILDREN'S SPECIAL NEEDS SCHOOL FUND

Aids families with children with special needs.

In Honor Of:

Speedy recovery of Susan Dubin – Shirley Saltzman

Marriage of Aliza McMillan & Aryeh Klein – Susan & Howard Dubin

In appreciation of Temple Israel – Charles Gelfond

In Memory Of:

Paula Balkin; Phyllis Hendin; Gertrude Paul Ross; Judi Schram; Abe Seiderman – Susan, Howard & Art Dubin

Shel Green; Claire Winnick – Helene & Earl Koenig

Jonas Minson – Essie Stillman

Evelyn Starman – Carol Plotnik

Marking Yahrzeit Of:

William Lite – Linda & Allan Gurvitz

ZACHARY M. TALAN EDELSON MACCABI SCHOLARSHIP FUND

Provides scholarships for Temple Israel Maccabi participants.

In Honor Of:

Bat Mitzvah of Sydney Gartrell – Sandy & Paul Schwartz

In celebration of the Graduation of Dr. Sarah Jacob; Special birthday of Andy Jacob – Wendy Talan

In Memory Of:

Phyllis Hendin – Sandy Schwartz

Milton Rotenberg – Linda & Andy Jacob; Beverly & Marvin Talan

Judi Schram – Wendy Talan

STEPHANIE HOPE ELLIS COLLEGE SCHOLARSHIP FUND

Assists a college-bound Temple Israel Religious School senior.

In Memory Of:

Brenda Beron – Marci, Marc, Eric, Zac & Rachel Berlin & Phyllis Cheiman

Sheldon Green – Barbara & Barry Grant

Marking Yahrzeit Of:

Stephanie Hope Ellis; Joseph Grant – Barbara & Barry Grant

ANNE & EDWARD FIENMAN COLLEGE SCHOLARSHIP FUND

Provides a college scholarship to a graduating senior from Temple Israel Religious School.

In Honor Of:

Mazel Tov to Dorothy and Arnie Collens on the Bat Mitzvah of your granddaughter; In appreciation of Temple Israel – Rosanne & Bennett

Fienman

FINE ARTS FUND

To support the purchases of fine art at Temple Israel.

In Honor Of:

Bar Mitzvah of Noah Yaker – Wendy Leonard-Sklar

In Memory Of:

Ruth Ann Pechenik – Barbara Wojcik

Melvin Rode – Laura & Peter Hymas

GENERAL ENDOWMENT FUND

Provides long term funding for Temple Israel.

In Honor Of:

In appreciation of Elissa & Danny Kline – Karen Kline

In Memory Of:

Jack Adelman; Chaya Bergman – Mara & Andrew Moss

Norm Berger – Adell & Herman Ozrovitz

Brenda Beron – Lisa Goldberg

Abe Seiderman – Sheryl, Cliff, Erica & Jason Dovitz

GENERAL GIFTS FUND

To provide general financial support of Temple Israel.

In Honor Of:

In appreciation of Karen Adelman & Family – Michelle Gaisser

Special birthday of Irving Friedman; In appreciation of Rabbi Jennifer

Kaluzny; In appreciation of Rabbi Harold Loss; In appreciation of Shelley

Meltzer – Judy Shewach & Fred Stevenson

80th Birthday of Estelle Kleiman – Lisa & Gary Shiffman

In appreciation of Temple Israel No Family Without Chanukah Program –

Rhonda & Jeff Shuster

In Memory Of:

Joel Fink – Fran Wolok & Harold Fellows

Ginny Kingsley – Mona & Jay Goldman

TRIBUTES (CONTINUED)

DR. FREDRIC & LINDA GOLD NEWLYWED MEZUZAH FUND

Provides a new Mezuzah and scroll to all newlywed couples blessed by our rabbis.

In Honor Of:

Mazel Tov on Alex's marriage – Rhonda & Steven Satovsky & Family

ALBERT GOODMAN COLLEGE SCHOLARSHIP FUND

Provides tuition assistance to a graduating senior of Temple Israel's Religious School.

In Honor Of:

In celebration of the birth of Winter Lily – Madeline & Aaron Silver

GOODMAN FAMILY JUDAICA MUSEUM FUND

Provides funding for the Temple Israel Judaica Museum and its programs.

In Memory Of:

Milton Rotenberg – Enid & Gary Goodman

Marking Yahrzeit Of:

Joseph Goodman – Teri & Mark Goodman

ESTHER & JACK GORBACK FAMILY ARCHIVES FUND

Supports the Temple Israel archives.

In Memory Of:

Judi Schram – Lyn & Les Gorback

ARLENE JUNE GOTTLIEB MUSIC APPRECIATION FUND

Provides for musical programming at Temple Israel.

In Memory Of:

Doris Enfield – Janie & Rob Starkman

STEPHEN GOTTLIEB ז"ל MEMORIAL ENDOWMENT FUND

Supports Temple Israel music programs.

In Memory Of:

Harold Gottlieb – Marcia Applebaum; Julie & Larry August; Linee Diem; Joan & Mickey Erman; Richard Gibbs; The Board and Directors and Staff at The Jewish Community Center of Metropolitan Detroit; Mr. & Mrs. Ed Kersch; Frances & Sidney Niss; Maida Portnoy; Karren & Jay Richard; Barbara Saperstein; Judy & Akram Yunas

AVIVA PEARL HERMAN MEMORIAL SHARE FUND

Provides support to those who have experienced miscarriage, stillbirth, or infant loss.

In Honor Of:

Birth of Jack Mark Bergmann; Mazel Tov on the engagement of Taylor Chaness and Ross Weintraub; Wishing a Happy Chanukah to Sarah, Micha, Maya & Avery Herman; Wedding Anniversary of Linda & Steve Kaplan; Speedy & full recovery of Linda Mickelson; Birth of Meira Esther Roybal; Birth of Mila Jude Sangid; Wishing a Happy Chanukah to Heather & Andy Schwartz & Family; Special birthday of Michael Wertheimer – Merle & Ron Schwartz & Family

In celebration of Merle & Ron Schwartz – Eileen & Shelley Kash; Linda & Maish Sherman

Special birthday of Norma Zelch – Shelley & Neil Chaness & Family

In Memory Of:

Evelyn Lipitz – Cheryl & Marc Bocknek

HUTTON FAMILY YOUTH GROUP FUND

Provides non-budgeted goods, services and equipment to Temple Israel's High School youth activities.

In Honor Of:

Engagement of Rachel Hutton & Brandon Schneider – Shelley & Lenny Hutton; Norma Portney Sugar & Bill McNabb

Speedy recovery of Mo Hutton – Cheryl & Ronald Kerwin; Carolyn & Steven Marks; Patti & Rick Phillips; Norma Portney Sugar & Bill McNabb

In Memory Of:

Mildred Bishop; Lester Feldman; Max Markzon; Milton Rotenberg – Shelley & Lenny Hutton

Gary Effron – Lenny Hutton

IWREY SENIOR PROGRAMING FUND

To support programming for seniors.

In Honor Of:

In appreciation of Debbie & Alvin Iwrey – Carolyn, Howard, Daniel & Jack Iwrey

In Memory Of:

Judi Schram – Carolyn & Howard Iwrey

Abe Seiderman – Carolyn Iwrey

IWREY FAMILY SPECIAL NEEDS FUND

Serves the needs of the elderly and individuals with disabilities through hearing devices and transportation.

In Honor Of:

Special birthday of Rosalie Gold – Sondra Iwrey

In Memory Of:

Alec Friedman; Annie Friedman; Jerry Friedman – Joan Malak

Judi Schram – Debbie & Alvin Iwrey; Fran Pearlman

KABBALAT SHABBAT ALBUM RECORDING FUND

In Honor Of:

Mazel Tov to Cantor Michael Smolash on your 13th Anniversary at Temple Israel – Nancy Firestone; Cindy & Mark Kandel

GLORIA & ALLEN KAFTAN SHABBAT CANDLESTICK FUND

Presents Shabbat candlesticks to families at the time of the naming of their children at Temple Israel.

In Honor Of:

Mazel Tov on the baby naming of Victoria Brooke Herman – Nana Cathy & Papa Gregg Herman

In Memory Of:

David Margolin – Mari & Sheldon Kaftan

STEPHAN ROSENBERGER KANDEL NURSERY SCHOOL SCHOLARSHIP FUND

Provides scholarships for nursery and bereavement books for bereaved parents.

In Honor Of:

Mazel Tov on the engagement of Shaina Kandel to Ben Hart – Esther & Harold Radin

In Memory Of:

Brenda Beron – Renee & Mark Feinberg

Stephan Rosenberger Kandel – Edee & Larry Sands

Beloved Mother of Helen & Harold Lewis – Sheryl & Shay Rosenfeld

Marking Yahrzeit Of:

Stephan Rosenberger Kandel – Karen & Allen Amber; Elaine Bertsch & Lillian White; Renee & Mark Feinberg; Sylvia Sands

JOYCE KELLER & MICHAEL A. WALCH MIKVAH FUND

Maintains the beautiful treasure that Temple Israel has in its mikvah.

In Memory Of:

Dr. Linda Tucker Roberts – Mary Jane & Rick Larson

HARRY & PHYLLIS KELLMAN MEMORIAL FUND

Supports senior programming at Temple Israel.

In Honor Of:

Mazel Tov to Karen & Allen Amber; Mazel Tov to Miriam Kreiman on the birth of your great grandchild; Speedy recovery of Michael Stocker; Speedy recovery of Carol Tower – Barbara Safran Cohen & Murray Cohen

In Memory Of:

Eleanor Swyer – Barbara Safran Cohen & Murray Cohen

BERTHA & HARRY KIFFERSTEIN SENIOR ADULT PROGRAMMING FUND

Supports senior programming at Temple Israel.

In Memory Of:

Jerry David; Milton Rotenberg – Marsha & Warren Kifferstein
Roz Partovich – Rosann Barak; Marsha & Warren Kifferstein
Leonard Siegal – Rosann Barak

Marking Yahrzeit Of:

Harold Hass; Molly Hass; Harry Kifferstein – Kifferstein Family
Bertha Kifferstein – Rosann Barak & Family; Kifferstein Family

DR. DENNIS J. AND MILLY KOVAN MEMORIAL FUND

In Honor Of:

Wedding of Antonia & Zachary Migdal – Susie & Jonathan Steinberg
70th Birthday of Larry Wolf – Linda Kovan

In Memory Of:

Molly Benton; Nelson Dembs; Don Neuman – Phyllis & Harvey Shapiro
Brenda Beron – Phyllis Grossman
Debbie, beloved sister of Mr. & Mrs. James Deutchman – Linda Kovan
Harriet Salzberg – Linda Kovan & Family

HARRY & SARAH LAKER MEMORIAL CONCERT FUND

Provides Temple with a concert of music with Jewish content.

In Honor Of:

In appreciation of Renee & Marty Laker – Carol Rubenfaer

In Memory Of:

Phyllis Hendin – Cheryl Blutworth; Mitzi & Ron Brown; Bobbie Green: Beth Kader; Evelyn Kreger; Aurelia, Alvin, Linda & Andrew Michaels; Eric, Jenny, Kate & Ryan Michaels; Barbara & Harold Nimchonok; Robinson Family; Lisa Sigel
Beverly Laker – Rise & Marty Goode

JOSEPH & BESSIE LEBOWSKY NURSERY SCHOOL FUND

Supplements toys, equipment and supplies used by the Nursery School.

In Honor Of:

Bar Mitzvah of Shea Cooney – Mindy & Buzz Wachler
Bar Mitzvah of Jenner Leib – Carolyn & Steven Marks; Yolanda & David Tisdale

In Memory Of:

Molly Benton – Erin, Marvin & Gracie Bleiberg
Linda Erlich – Hedy & David Blatt
Elissa Ann Leider – Fern Genser; Eileen Rodner

LARRY LEVIN MEMORIAL SCHOLARSHIP FUND

Provides a scholarship for a Temple Israel student for camp or other youth summer trips.

In Honor Of:

Bat Mitzvah of Noa Goldstein; Bat Mitzvah of Bella Muchnick – Elaine & Mel Raznick
Speedy recovery of Alan Grossberg – Susan & Jeffrey LaKritz

In Memory Of:

Linda Erlich – Susan & Jeffrey LaKritz
Milton Rothenberg – Elaine & Mel Raznick
Norman Shwedel – Carole Levin

LIBRARY FUND

Supports Temple Israel libraries.

In Honor Of:

85th Birthday of Ed Broida – Sheri & Jay Abramson; Barbara & Robert Hurwit; Sandy & Bill Lefkowsky; Diane & Stuart Mittenthal; Anita & Robert H. Naftaly; Fran & Jerry Uzansky
Mazel Tov to Susie & Jason Bittker on your special birthdays – Randolph Family
Marriage of Haddas & Thomas Benhamou – Doris Pastor
Bar Mitzvah of Zachary Frank – Lainey & Arthur Steuer

Marriage of Alison & Marty Hortick – Abby Randolph

90th Birthday of Bert Jacobs – Ruth Sugar Beresh

Mazel Tov to Lauren Marcus Johnson on your 10th Anniversary at Temple Israel – Edie & Ed Broida

Birth of August Isaac Spector – DeDe & Jerry Weinberg

90th Birthday of Ann Torf – Linda & Murray Goldenberg & Lori, Brian, Hailey & Jordan Serlin

In Memory Of:

Ronald Chaiken – Karen & Rickey Erlich; Diane Harnish
Linda Erlich – Julie & Dennis Chaiken; Diane Harnish; Barbara & Larry Kaluzny; Irene & Art Landau; Susie & Richard Lezell; Marsha & Neil Millman; Tammy & Lee Steinberg
Andrea Katzman – Ruth Beresh
Gertrude Ross – Shirley & Dave Moscow
Milton Rothenberg – Debbie & Henry Gornbein; Judy & Coleman Verona
Judi Schram – Jill & Jules Goldman; Nancy & Rick Rosenthal
Abraham Seiderman – Jim Nugent & Lori Ostergaard
Joyce White – Nancy & Rick Rosenthal

Marking Yahrzeit Of:

Mary Been; Louis Been; Jeffery Rochen; Leo Rochen; Phoebe Rochen – Phyllis & Donald Rochen
Audrey Cornfield Lacoff – Ellen & Cary Adelman

BERNARD E. & BERNICE S. LINDEN FINE ARTS FUND

Assists acquisition of fine art and art forms, and to renovate objects d'art currently in Temple Israel's possession.

In Honor Of:

95th Birthday of Bernice Linden – Esther Bornstein, Marilyn Gutter & Sharon Horwitz; Deena & David Fishman; Susie & Neil Gross; Saphira Linden, Asatar Bair & Felicity Lanier Bair, Ethan & Nadya Bair, Allan & Pauline Linden, Josh Linden & Emily Linden; Carolyn & Steven Marks; Jan & Stan Sherman

ROSALYN LINER & BARRY LINER MEMORIAL FUND

Supports the annual Temple Israel Chanukah party.

In Memory Of:

Linda Erlich; Shel Green – Natalie & Sidney Blatnikoff
Honora Lipson; Joyce White – Judy & Kent Siegel

LIPSON FAMILY MINYAN FUND

Provides resources for Minyan expenses.

In Honor Of:

Birth of Mia Erlich – Issie Goodman
In appreciation of Irv Friedman – Joan & Jeff Climie, Barbara Goode, Caryl Markzon & Mark Eidelson

In Memory Of:

Brenda Beron – Beverly Salter
Phyllis Hendin – Barbara & Michael Berger; Bonnie & Earl Brenner; Laura Lipson-Channing; Sandy & Jerry Helman; Sharon & Jerry Knoppow; Wendy Miller
Honora Lipson – Charlotte Arbit; Julie & Larry August; Barbara & Stan Bershad; Cheryl & Marc Bocknek; Debbie & Jeff Chutz; Becki & Steve Cole; Lori, Jake, Randi Feldman & Barton Charlip; Nancy Firestone; Cindy & Michael Gersten; Ronna & Stuart Gold; Issie Goodman; Ruth & Jim Grey; Eileen & David Higer; Debbie Horowitz & Richard Eaton; Elissa & Danny Kline; Mary Jane & Rick Larson; Nancy & Barry Lefkowitz; Linda & Ken Lenchner; Beryl & Mickey Levin; Lutz Family; Donna & Michael Maddin; Karen Manchel; Sue & Larry Oleinick; Rae Peltz; Joe Roberts & Family; Iris & Howard Rosen; Barb & Dick Rosenthal; Debbie Rottman; Shirley Saltzman; Barbara & Norman Samson; Fred Schatz; Connie Schwartz; Susan & Michael Solarz; Margie & Karl Stern; Barbara Stollman; Yolanda & David Tisdale; Tuttleman Family; Julie Feldman & Paul Unatin & Family; DeDe & Jerry Weinberg; Linda & Marty Weitz; Libby & Art White; Laurie & Peter Winston
Helene Robbins – Issie Goodman

Marking Yahrzeit Of:

Michael Alan Gerufs – Annette & Steve Gerufs

TRIBUTES (CONTINUED)

SUSAN & RABBI HAROLD LOSS EARLY CHILDHOOD CENTER SCHOLARSHIP FUND

To provide Early Childhood Center scholarships.

In Honor Of:

70th Birthday of Rob Cohn – Wendy & Jeffrey Roth
Bat Mitzvah of Sydney Gartrell – Rhonda & Michael Piper
Bar Mitzvah of A.J. Goodman; Mazel Tov to Susie Sills & Michael Levy on the birth of your granddaughter Ada; Bat Mitzvah of Alix Lyons & Avery Lyons – Carolyn & Steven Marks
Special birthday of Sylvia Hamburger; 80th Birthday of Alan Wineman – Lois & Jerry Gerenraich
In appreciation of Rabbi Harold Loss – Brett, Charlie & Frankie Finsilver; Shari & Stanley Finsilver
In appreciation of Susan & Rabbi Harold Loss – Sarah Gottlieb & Family
Happy Chanukah to Gert Matz – Nancy B., Linda & Jeffrey Weiss
Bar Mitzvah of Max Melamed – Donna & Will Phillips
Bat Mitzvah of Ava Riback – Wendy & Jeff Roth
Speedy recovery of Michael Stocker – Amy & Aaron Marks-Swedler
Speedy recovery of Helen Stone & Kenneth Stone – Sheri & David Jaffa
In appreciation of Temple Israel – Brenda & Mark Altus

In Memory Of:

Jack Adelman – Rachel & Jeff Levine; Wendy & Jeff Roth
Hy Blinder – Barbara Saltz
Elaine J. Burnstine – Virginia & Robert Burnstine
Jerry David – Evelyn & Lou Grant
Linda Erlich – Rachel & Jeff Levine; Wendy & Jeffrey Roth
Helen Pasternak Emerman – Andy & Steven Weiss & Family
David Foster – Harriet Trager & Herb Cohen
Jerry Kanter; Bruce Polozker – Flora Goldfarb
Andrea Katzman – Judie & Jerry Kroot
Mark E. Klinger – Shelia Michalowsky
Elissa Leider – Git & Jerry Feldman; Shelley Meltzer; Sandy Lumberg & Donna Smith
Evelyn Lipitz – Jan & Seymour Wander
Honora Lipson – Laure & Howard Stoller; Amy & Aaron Swedler & Family
Karol Litt – Rachel & Jeff Levine
Maurice Otis – Diane Krome; Wendy & Jeffrey Roth
Milton Rothenberg – Wendy & Jeffrey Roth
Joseph Rothenberg – Harriet Trager & Herbert Cohen; Sid Ross
Judi Schram – Cindy & Murray Franklin; Kathy & Dennis Rosenzweig
Beloved Father of the Wayne Family – Pipers Family
Harvey Wolf – Cory & Larry Gillman

Marking Yahrzeit Of:

Harold Michaels – Sheila Michalowsky
Morris Rudin; Sara Weiss – Harriet Trager & Herbert Cohen

LOUIS & LILY MARGOLIS FAMILY CHALLAH FUND

Provides Challah to new members, and to those members returning home from the hospital or nursing care.

In Memory Of:

Brenda Beron – Sandi & Bob Weiss
Valera Papov – Elaine & David Lippitt

ADRIENNE MILIN BAR/BAT MITZVAH PRAYERBOOK FUND

Provides a copy of our "Prayer Book" to each Temple Israel Bar/Bat Mitzvah celebrant.

In Honor Of:

Bat Mitzvah of Shayna – Linda & Steve Munson

In Memory Of:

Bruce Hausman – Barbara & Jack Milin

PEGGY AND HARRY MILLER EARLY CHILDHOOD CENTER SCHOLARSHIP FUND

To provide Early Childhood Center scholarships.

In Honor Of:

Bat Mitzvah of Noa Goldstein – Helen & Charlie Kaye
In appreciation of Dr. Larry Miller – Sue & Sheldon Erlich & The Erlich Family
Bat Mitzvah of Isabella Muchnick – B.J. & Gary Berkowitz; Eden, Kevin, Skylar & Zachary Elbinger; Helen & Charlie Kaye; Adrienne & Jerry Weinstein

In Memory Of:

Geoffrey Eaton – Helen & Charlie Kaye
Linda Erlich – Carole & Larry Miller; Suzi & David Wiener
Maurice Otis; Judi Schram – Carole & Larry Miller
Sol Winkler – Suzi & David Wiener

CHARLES A. MILLION & CAROL MILLION RAF CAMP & RABBINICAL SCHOLARSHIP FUND

Provides a Religious School student with a camp scholarship at a UAHC summer camp and to provide funding for rabbinic and cantorial students when Temple Israel has such applicants.

In Memory Of:

Shel Green – David Million

BARBARA AND LAWRENCE MILLMAN FAMILY CHANUKAH FUND

Provides holiday celebrations for those in need.

In Honor Of:

Wishing a Happy Chanukah to Isaac Brickner; Wishing a Happy Chanukah to Lindsay & Jason Cox; Wishing a Happy Chanukah to Sara Ayn & Grant Grays; Wishing a Happy Chanukah to Ari & Blair Stern – Phyllis Brickner
Wishing a Chanukah filled with laughter & joy to Amy & Adam Brode & Family; Wishing a Chanukah filled with laughter & joy to Linda Dembs; Wishing a Chanukah filled with laughter & joy to Fred Raznick & Madeline Dunn; Wishing a Chanukah filled with laughter & joy to Bobbi & Gary Feldman; Wishing a Chanukah filled with laughter & joy to Marcia & Stu Felhandler; Wishing a Chanukah filled with laughter & joy to Shelley & Art Fine; Wishing a Chanukah filled with laughter & joy to Sarah & Eric Gordan; Wishing a Chanukah filled with laughter & joy to Barbara & Barry Grant; Wishing a Chanukah filled with laughter & joy to Becky & Andrew Hayman & Family; Wishing a Chanukah filled with laughter & joy to Gail & Bob Kaplan; Wishing a Chanukah filled with laughter & joy to Carolyn Karp; Wishing a Chanukah filled with laughter & joy to Stacey & Olivia Karp; Wishing a Chanukah filled with laughter & joy to Jennifer, Bill & Zachary LeGrand; Wishing a Chanukah filled with laughter & joy to Lisa & Jason Levine & Girls; Wishing a Chanukah filled with laughter & joy to Mindy Levine; Wishing a Chanukah filled with laughter & joy to Susan & Rabbi Harold Loss; Wishing a Chanukah filled with laughter & joy to Linda & Hank Marcus; Wishing a Chanukah filled with laughter & joy to Marsha & Neil Millman; Wishing a Chanukah filled with laughter & joy to Michelle & Drew Millman & Family; Wishing a Chanukah filled with laughter & joy to Margi & Morry Oppener; Wishing a Chanukah filled with laughter & joy to Rachel & Josh Oppener & Sons; Wishing a Chanukah filled with laughter & joy to Harriet & Neil Pepper & Family; Wishing a Chanukah filled with laughter & joy to Joan & David Raznick; Wishing a Chanukah filled with laughter & joy to Kim & Mike Raznick & Family; Wishing a Chanukah filled with laughter & joy to Nancy & Alan Raznick; Wishing a Chanukah filled with laughter & joy to Daryle Roth; Wishing a Chanukah filled with laughter & joy to Iris & Rick Schloss; Wishing a Chanukah filled with laughter & joy to Judith & Ernie Simon; Wishing a Chanukah filled with laughter & joy to Karen & Eric Simon & Family; Wishing a Chanukah filled with laughter & joy to Linda & Mike Simon; Wishing a Chanukah filled with laughter & joy to Beverley & Dennis Wolgin; Wishing a Chanukah filled with laughter & joy to Wendy & Rabbi Paul Yedwab; Wishing a Chanukah filled with laughter & joy to Rochelle & Jerry Zabel – Barbara & Larry Millman

Bat Mitzvah of Alexa Hernandez – Barbara & Larry Millman
 Wishing a Happy Chanukah to Sarah, Micah, Maya & Avery Herman;
 Wishing a Happy Chanukah to Andy & Heather & Andy Schwartz & Family
 – Merle & Ron Schwartz
 Bat Mitzvah of Melanie Hirsch – Karen & Bruce Gilbert
 In Celebration of Barbara & Larry Millman – Margi & Morry Opperer
 Bat Mitzvah of Rachel Thav – Margi & Morry Opperer
In Memory Of:
 Goldie Glick – Jan Goldman
 Norman Shwedel; Irving Tobocman – Barbara & Larry Millman
Marking Yahrzeit Of:
 Bertha Weinstein; Kenneth Weinstein – Sheldon & Marcie Weinstein

MICKY MINDELL EMERGENCY NEEDS MEMORIAL FUND

To provide emergency assistance to families in crisis.

In Honor Of:
 Marriage of Haddas & Thomas Benhamou – Shelia & Miles Hurwitz
In Memory Of:
 Mark Klinger – Barbara & Sheldon Weisberg
 Dr. Jack Shapiro; Leonard Siegal – Barbara & Shel Weisberg

IRVING & SARAH PITT COLLEGE SCHOLARSHIP FUND

Provides college scholarships to deserving Temple Israel seniors.

In Honor Of:
 In honor of Barry Pitt – Gordon Advisors, P.C.

PRAYERBOOK FUND

Provides prayerbooks and other religious publications for Temple Israel use.

In Honor Of:
 Special birthday of Earl Ishbia – Vera & Jimmy Gell
 40th Wedding anniversary Gerry & Buddy Sollish – Michele Dubrinsky
 Mazel Tov to Carly Wolf on your graduation from Michigan State University
 – Rena Littman & Lisa Fox
In Memory Of:
 Phyllis Hendin – Carrie & Alan Holtz
 Mark Klinger – Alana & Richard Waldorf
 Beloved Father of Michelle & Lawrence Levy; Judi Schram – Teri & Mark Goodman
 Milton Rotenberg – Dr. Jeffrey & Laurie Fischgrund, Andrew, Melanie,
 Michelle, Marcy & Mark; Teri & Mark Goodman

RABBIS' DISCRETIONARY FUND

For charitable purposes.

In Honor Of:
 Speedy recovery of Charlotte Arbit – Debbie & Jeff Chutz
 In appreciation of Rabbi Josh Bennett – Jenna & Josh Borson; Susan &
 Jerry Chapnick; Mo, Shelley & Lenny Hutton; Cindy & Mark Kandel; Sarah
 Gottlieb & Family; Andrea & Harry Potash; Sandy & Dennis Thompson
 Bar Mitzvah of Jared Fox – Lee Morof
 Bar Mitzvah of Zachary Frank – Peggy & Dennis Frank
 Happy anniversary of Renee & Jerry Gerger – Debbie & Jeff Chutz
 Bar Mitzvah of Ben Glickman – Judy Colton; Dr. Richard & Marion Menczer
 In appreciation of Arianna Gordon – Sarah Gottlieb & Family
 In appreciation of Rabbi Marla Hornsten – Susan & Jerry Chapnick; Debby
 & David Elias; Sarah Gottlieb & Family; Fatin & Todd Hawley; Lisa &
 Matthew Howard; Cindy & Mark Kandel; Jennifer & Ryan Schneider; Erin &
 Marc Young
 In appreciation of Rabbi Jennifer Kaluzny – Susan & Jerry Chapnick; Sarah
 Gottlieb & Family; Mo, Shelley & Lenny Hutton; Cindy & Mark Kandel
 In appreciation of Rabbi Jen Lader – Susan & Jerry Chapnick; Sarah
 Gottlieb & Family; Mo, Shelley & Lenny Hutton; Cindy & Mark Kandel;
 Linda & Howard Newman

Special birthday of Kenneth Lenchner – Linda & Joel Garfield
 In appreciation of Rabbi Harold Loss – Susan & Jerry Chapnick; Sarah
 Gottlieb & Family; Mo, Shelley & Lenny Hutton; Cindy & Mark Kandel;
 Paula & Howard Linden; Sandy & Dennis Thompson; Marsha Wolf
 Bat Mitzvah of Alix Lyons; Bat Mitzvah of Avery Lyons – Lee Morof
 Mazel Tov to Mr. & Mrs. Ronald Riback on the Bat Mitzvah of your
 granddaughter Ava – Jean & Howard Dubin & Family
 Birth of Ethan Slutsky – Jill & Jules Goldman
 In appreciation of Temple Israel Clergy – Dee Letvin; Claire Stern; Amy &
 Ron Weiner
 In appreciation of Temple Israel beautiful & meaningful Shabbat Services –
 Carol Nancy Kent
 In appreciation of Rabbi Paul Yedwab – Susan & Jerry Chapnick; Peggy &
 Dennis Frank; Sarah Gottlieb & Family; Mo, Shelley & Lenny Hutton; Cindy
 & Mark Kandel; Marsha & Mark Klein
In Memory Of:
 Jerry Band; Louise Band; Helen Braverman; Sam Braverman; Roger Persin;
 Allen Seel – Michele & Jordan Scharg
 Brenda Beron – Ellyce & Steve Field; Sonia Sklar
 Hy Blinder – Sharie & Al Gladner
 Thelma Cohen – Shirley & David Moscow
 Geoffrey Eaton – Barbara & Larry Dubb; Sheila & Larry Trepeck
 Linda Erlich – Judy Chupack; Debbie & Jeff Chutz
 Marilyn Franklin Eichelbaum – Ellen & Frank Wolff
 Mattie Fredrick – Debbie & Jeff Chutz
 Cindy Golden – Kathy & Dennis Rosenzweig
 Jerry Kanter – Fran Wolok & Harold Fellows
 Stanley Lindenbaum; Richard Sienens – Harriett & Morton Freedman &
 Nancy & Gary Klein
 Sol Margolis; Madeline Wilbur – Harriett & Morton Freedman
 Maurice Otis – Amy, Brian, Jordyn & Jonah Shapiro
 Harriet Rich – Layla, Ray, Brad & Kevin Mendelson
 Milton Rotenberg – Dr. Judi Thruswell & Dr. Joel Miller
 Judi Schram – Barbara & Larry Dubb; Jen, David, Ben & Addison Goldman
 Norman Shwedel; Zelda Shwedel – Libby & Art White
 Joyce White – Joan & Sherman Char
 Claire Winnick – Debbie & Jeff Chutz
Marking Yahrzeit Of:
 Dr. Leon Firestone – Nancy Firestone
 William D. Hacker; Sara Weiss – Gladys Hacker
 Harry Rice – Helen & Gary Wexler

FAYE & DON REIFLER MEMORIAL YOUTH TRIP SCHOLARSHIP FUND

Provides scholarships to Temple Israel youth group members to attend youth trips.

In Memory Of:
 Nathan Dembs – Amy, J.J., Madi & Morgan Reifler
 Don Reifler; Faye Reifler – Michele & Jordan Scharg
 Judi Schram – Nancy & Rick Rosenthal

LYNN & HARVEY RUBIN SOCIAL ACTION FUND

In Honor Of:
 Birth of Mia Erlich; Mazel Tov to Mr. & Mrs. Gary Goodman on the birth
 of your grandchild Winter; Speedy recovery of Steve Goodman; Speedy
 recovery of Alvin Rubin; Mazel Tov to Cantor Michael Smolash & Family on
 your new home – Lynn & Harvey Rubin
 70th Birthday of Harvey Rubin – Judi Schneider
In Memory Of:
 Gerald David; Linda Erlich; Stephen Hayman; James Leopold; Solomon
 Margolis; Judi Schram – Lynn & Harvey Rubin
 Nelson Dembs; Judi Schram – Lois & Alvin Rubin

TRIBUTES (CONTINUED)

SAMSON FAMILY MINYAN FUND

Assists in the expenses of the daily Minyan.

In Honor Of:

In appreciation of Rabbi Jennifer Kaluzny – Judy Shewach & Fred Stevenson

In appreciation of William Lopatin; Special birthday of Karen Singer – Debbie Rottman

In appreciation of Jeff London – Joan & Jeff Climie, Barbara Goode, Caryl Markzon & Mark Eidelson

Speedy recovery of Steve Gutman – Barbara & Norman Samson

In Memory Of:

Brenda Beron – Beverly Bennett; Barbara & Michael B. Berger
Shel Green; Sharon Hauptman; Evelyn Lipitz – Barbara & Norman Samson
Phyllis Hendin – Rosalie Eisenberg; Ivajean & Milton Erlich; Arlene Gendelman; Issie, Steve & Richard Goodman; Richard Schloss; Linda & Howard Vogel

Beloved Marsha – Annette Rosen & Harvey Miller

Helene Robbins – Linda & Steven Weiss

Judi Schram – Barbara & Norman Samson

Abraham Seiderman – Issie, Steven & Rick Goodman; Debbie Rottman; Barbara Stollman

Claire Winnick – Cheryl & Marc Bocknek; Shelley & Arthur Fine; Margie & Michael Hirsch; Barbara & Norman Samson

Marking Yahrzeit Of:

Martha Boraks; Paul Boraks; Pauline Samson; Ruby R. Samson – Barbara & Norman Samson & Family

SCHELBERG FAMILY SHABBAT BIRTHDAY BOOK FUND

Provides children's books for the Shabbat Birthday Program.

In Memory Of:

Hyman Blinder; Linda Erlich; Joyce White; Claire Winnick; Gertrude

Zicherman – Marilyn & Jim Schelberg

SUSAN SHANKER CAMP SCHOLARSHIP FUND

Provides a UAHC camp scholarship to a Religious School student.

In Honor Of:

In appreciation of Hartley Harris – Carole Borlack

In appreciation of Rabbi Marla Hornsten – Seiderman Family

Mazel Tov to the Schiffer Family on the birth of your Grandchild – Sherry & Danny Stewart

Mazel Tov to Janis & Eric Schiffer on the birth of your granddaughter Lyla:

Mazel Tov to Barbara & Ron Stewart on the birth of your granddaughter

Benni – Ellen & Marc Whitefield

Speedy recovery of Mr. Stephen Gutman – Geri & Paul Levin

75th Birthday of Earl Ishbia – Irene & Art Landau; Arlene Stern

100th Birthday of Norman Wauldron – Debbie & Henry Gornbein

In Memory Of:

Stanley Birnbaum – Carole Borlack

David Margolin – Ellen & Marc Whitefield

Judi Schram – Debbie & Henry Gornbein

Jeff Stulberg – Shirley & Dave Moscow

Marking Yahrzeit Of:

Carol Gell – Nancy Gell

EVAN SHAPIRO FUND FOR THE FIGHT AGAINST CANCER

Provides cancer awareness educational programs at Temple Israel.

In Memory Of:

Brenda Beron – Julie Borish

KOLE-OTIS-SKLAR FAMILIES EARLY EDUCATION FUND IN MEMORY OF SHEILA OTIS SKLAR, ROSE WEIDER OTIS & IRVIN OTIS

Supports Nursery (ECC) Tot Shabbat picnic programs.

In Honor Of:

Speedy recovery of Bernie Kole – Marcy Wasserman & Paul Epstein & Family

In Memory Of:

Paul Sholem Amber; Sylvia Weider Amber – Betty Amber & Rhonda Amber

ROBERT SOSNICK FAMILY LIFE CENTER ENDOWMENT

Supports Temple Israel's Family Life Center.

In Honor Of:

65th Birthday of Diane Levy-Rubenstein – Libby August & Eileen Lee

In Memory Of:

Pauline Dubin; Bruce W. Polozker – Susan Sosnick

Abe Seiderman – Fran Pearlman

Marking Yahrzeit Of:

Lindsey Finsilver – Shari & Stanley Finsilver

STARK FAMILY FUND

Provides family programming.

In Honor Of:

Speedy recovery of Jay Stark – Rabbi Eric Stark

In Memory Of:

Mark Klinger – Arnie Weintraub

ALICIA JOY TECHNER MEMORIAL FUND

Provides an annual parenting conference.

In Memory Of:

John Zumbrunnen – The Staff at Ira Kaufman Chapel

TEMPLE ISRAEL BROTHERHOOD FUND

Supports Temple Israel Brotherhood programming.

In Honor Of:

95th Birthday of Jack Caminker – Ruth & Jim Gray

Special birthday of Sharon Silverman – Shellie & Steven Achtman

In Memory Of:

Joel Fink; Helene Robbins; Jeff Stulberg – Shellie & Steven Achtman

Marilyn Eichelbaum – Jim Grey; Rae Peltz; Temple Israel Brotherhood

Honora Lipson – Kerry & Brian Karbel; Temple Israel Brotherhood

Karol Litt – Nayda & Norman Schwartz

TEMPLE ISRAEL ENVIRONMENTAL FUND

Supports Temple Israel "Green" Projects.

In Honor Of:

Mazel Tov to Karen & Bruce Gilbert on the birth of your grandson Isaac –

Marcia & Stan Freedman

TEMPLE ISRAEL SISTERHOOD FUND

Supports Temple Israel Sisterhood programming.

In Honor Of:

In appreciation of The Angels of Peace of Mind Life Solutions – Cindy & Barry Howard

85th Birthday of Edward Broida – Michele Dubrinsky

Marriage of Aliza & Aryeh Klein – Diane Okun & Laila Cohen

Birth of Camden Grant Levy – Temple Israel Sisterhood

In Memory Of:

Brenda Beron – Marsha & Jerry Moss

Hy Blinder – Laurie & Mark Blinder; Ronna & Harvey Heller; Ann & Jon Podolsky; Julie & Billy Stern

Nelson Dembs; Willy Goose – Wendy, Larry, Jared & Liza Kohlenberg

Linda Erlich; Claire Winnick – Essie Stillman

Honora Lipson; In memory of Mango – McMillan Family

THE WELL – A PROJECT OF THE LORI TALSKY ZEKELMAN FUND

In Honor Of:

Special birthday of Lee Trepeck – Ellen & Marc Whitefield

LEONARD & ROSLYN TRUNSKY COLLEGE SCHOLARSHIP FUND

Supports scholarship funding.

In Memory Of:

Abraham Seiderman; Dr. Ronald Trunsky – Isabel & Milton Dzodin

Marking Yahrzeit Of:

Leonard Trunsky – Isabel & Milton Dzodin

JACKIE UNATIN MEMORIAL CHANUKAH FUND

Provides holiday celebrations for those in need.

In Honor Of:

Birth of August Isaac Spector – Chickie Dwoskin

YALDEINU FUND

Funds for children who have been orphaned in our community.

Marking Yahrzeit Of:

Pauline Chudnov – Marcy Chudnov

WENDY & RABBI PAUL YEDWAB YOUTH ENRICHMENT FUND

To support a variety of youth enrichment activities offered or sponsored by Temple Israel.

In Honor Of:

In appreciation of Rabbi Paul Yedwab – Joshua Bernard; Joan & Jeff Climie, Barbara Goode, Caryl Markzon & Mark Eidelson; Brett, Charlie & Frankie Finsilver

In Memory Of:

Beloved Arnie – Sheri & David Jaffa
Brenda Beron – Betsy & Mike Winkelman
Geoffrey Eaton – Connie & Hal Schwartz
Honora Lipson – Rose & Steve Sallen
Jeff Stulberg – Sid Ross
Victor Widenbaum – Berger Family

SUSAN & HANLEY YORKE SOCIAL ACTION FUND

Finances social action projects of Temple Israel.

In Honor Of:

Mazel Tov to Rabbi Marla Hornsten on receiving the Oakland County Domestic Violence Prevention Award – Susan Yorke

In Memory Of:

Harvey Wolf – Susan Yorke

YOUTH ISRAEL PILGRIMAGE FUND

Supports youth scholarships for Temple Israel sponsored trips to Israel.

In Honor Of:

Mazel Tov to Mr. & Mrs. Ben Charkow on the Bar Mitzvah of Micah – Linda & Murray Goldenberg
80th Birthday of Sue Garfinkle – Rhonda & Mike Piper
Bat Mitzvah of Melanie Hirsch – Susan & Jeffrey Young
Speedy recovery of Herb Lantor – Sherrie & Norty Stern
40th Birthday of Dr. Aaron Scheinfeld – Carolyn & Steven Marks
Speedy recovery of Michael Stocker – Carolyn & Steven Marks; Yolanda & David Tisdale
B'not Mitzvah of Rebecca & Ashley Tauber – Linda Goldenberg

In Memory Of:

Gerald David – Peggy & Harry Ellman
Linda Erlich – Sherrie & Norty Stern
Dave Margolin – Linda & Steve Munson
Henri Mouradian – Marilyn Frank Saperstein
Hope Steinberg – Patty Richie
Edith Takiff – Nikki & Jamie Ryke
Joyce White – Yolanda & David Tisdale

Marking Yahrzeit Of:

Oscar Goldberg – Jeannette & Michael Wertheimer

JUDITH & RICHARD ZATKIN YOUTH FUND

Provides resources for Youth Group programs.

In Memory Of:

Hy Blinder; Linda Erlich – Lynn & Don Apel

FUNDS BEING FORMED

AARON FENTON MEMORIAL FUND

In Honor Of:

Bat Mitzvah of Noa Goldstein – Judy & Irving Blau; Helene & Earl Koenig

In Memory Of:

Milton Rosenberg – Shelia & Mark Fenton
Judi Schram – Susan & Michael Solarz

RICHARD GERSHENSON MEMORIAL FUND

In Memory Of:

Judi Schram – Hilary Mellin & Joel Gershenson

ARNIE GOODMAN MEMORIAL FUND

In Memory Of:

Arnie Goodman – Mona Dembs; Miriam & Jeff Forman; Jody & Marshall Sack; Marilyn & Jim Schelberg; Amy, Brian, Jordyn & Jonah Shapiro

RICHARD MONASH CARING FUND

In Honor Of:

Mazel Tov to Donna & Jack Belen on the Bat Mitzvah of your granddaughter Carly – Nancy & Cecil Raitt
Speedy recovery of Chuck Domstein; Speedy recovery of Jeffrey Olstein; Speedy recovery of Michael Stocker – Margi & Harry Weinhaus
Bat Mitzvah of Melanie Hirsch – Shelley & Arthur Fine; Barbara & Raymond Horenstein
55th Wedding anniversary of Nancy & Harvey Lash – Dr. & Ed Haenick
80th Birthday of Bob Ruby – Roz & Leon Levine
Bat Mitzvah of Ava Usher – Lisa, Rick, Mason & Blake Rubenfaer
In Memory Of:
Jack Adelman; Brenda Beron – Rick, Lisa, Mason & Blake Rubenfaer
Florie Amster; Liz Spickler – Margi & Harry Weinhaus
Kenny Chaiken – Barbara & Howard Leshman
Ronald Chaiken – Barbara & Ray Horenstein
Nelson Dembs – Carol Monash; Lisa & Rick Rubenfaer
Linda Erlich – Carol Monash
Shel Green – Carol & Ross Fridson; Carol Monash
Sharon Hauptman – Phyllis & Gary Levitt; Carol Monash
Judi Schram – Elissa & Danny Kline; Phyllis & Gary Levitt; Carol Monash
Claire Winnick – Phyllis & Gary Levitt
Marking Yahrzeit Of:
Richard Monash – Rick, Lisa, Mason & Blake Rubenfaer

MICHAEL N. ROTH CAMP SCHOLARSHIP MEMORIAL FUND

To provide support for URJ Camp Scholarships.

In Honor Of:

55th Wedding anniversary of Nancy & Harvey Lash – Beth & Sidney Feldman
In appreciation of Rabbi Harold Loss; In appreciation of Rabbi Paul Yedwab – Marilyn & Paul Meyer
In Memory Of:
Nelson Dembs; Linda Erlich; Shirley Friedman; Harvey Wolf – Janie Roth

TRIBUTES (CONTINUED)

STANLEY SATOVSKY FAMILY FUND

In Honor Of:

Bar Mitzvah of A.J. Goodman – Rhonda & Steven Satovsky

In Memory Of:

Milton Rotenberg – Rhonda & Steven Satovsky & Family

ABRAHAM SEIDERMAN MEMORIAL FUND

In Honor Of:

In appreciation of Linda & Al Katzen; In appreciation of Sheryl Lederman; In appreciation of Carolyn Normandin – Seiderman Family

In appreciation of Cantor Neil Michaels – Simona Seiderman

In Memory Of:

Abraham Seiderman – Marlene Margolis; Joe Roberts and Family; Joyce Keller & Michael Walch

JEFFREY SURNOW MEMORIAL FUND

In Memory Of:

Geri Cherney – Wendy & Ron Gruskin

Irving H. Steinberg – Wendy & Ron Gruskin & Mrs. Barbara Berg

Marking Yahrzeit Of:

Jeffrey Surnow – Michele & Jordan Scharg

Morris Widenbaum – Madelyn Gruskin

JUANITA & GEORGE VICTOR MISHEBEIRACH BLANKET FUND

To provide mishebeirach blankets to hospital, nursing home and rehab patients.

In Honor Of:

Bar Mitzvah of Hugo Brodsky – Glenda & Bob Lask

In Memory Of:

Joyce White – Linda Brodsky; Glenda & Bob Lask

YFTI FUND

In Honor Of:

In appreciation of Rabbi Arianna Gordon – Lori, Yoav, Reed, Eden & Stone Ritter

Birth of Asher Gribov – Rose & Steve Sallen

In appreciation of Rabbi Jen Lader – Debbie Ernst; Mr. & Mrs. George Hirschbein; Rabbi Dan & Miriam Horwitz; Cyndi Stone

In appreciation of Temple Israel Teens Housing the Homeless – Carol Lader Dinow; Cyndi Stone; Debby Suris

In Memory Of:

Judi Schram – Julie & Dr. Ron Hirsch



New This Month: Memorial Board Listings

Nettie Rothenberg | Francine Savin

Regene Schmier | Abraham Seiderman

Pauline Sporn Dubin

For information on how to share your loved ones story,
contact Erin Dunn at 248-661-5700 or email
memorialboard@temple-israel.org.

Interactive Memorial Boards are a gift of Judith and Dr. Max Robins.

Temple Israel Tribute Form

Your Information:

Name: _____

Address: _____

City/State/Zip: _____

Phone: _____

Please make a contribution to the following fund:

☐ \$12.00 Contribution ☐ \$18.00 Chai contribution

☐ \$25.00 Contribution

☐ Other, please specify (\$12.00 minimum): _____

☐ \$25.00 Library book dedication (Library Fund)

☐ \$54.00 Ora V' Simcha book dedication (Prayerbook Fund)

☐ \$118.00 Prayer book dedication (Prayerbook Fund)

Make checks payable to Temple Israel and send to
5725 Walnut Lake Road, West Bloomfield, MI 48323

☐ Check enclosed ☐ Visa ☐ MasterCard ☐ AmEx

Number: _____ Exp. Date: _____

CW Code: _____ Billing Name: _____

Tribute Occasion:

☐ In honor of ☐ In appreciation of ☐ Speedy recovery of

☐ In memory of ☐ Marking yahrzeit of

For (Bar/Bat Mitzvah, wedding, etc.): _____

Name to appear on tribute: _____

Please send acknowledgment card to:

Name: _____

Address: _____

City/State/Zip: _____

FEBRUARY 2018 AT A GLANCE

Sunday	Monday	Tuesday	Wednesday	Thursday	Friday	Saturday
				1 Game Day (Pg. 10) Dinner & Movie (Pg. 10)	2	3 PJs Pancakes & Prayers (Pg. 8)
4	5	6 Food Pantry (Pg. 7) Caregiver Support (Pg. 24) SHARE (Pg. 24)	7	8 Movies @ Maple (Pg. 10) Gateway to Oneness (Pg. 20) Mother/Daughter Book Club (Pg. 22) Bereavement Support (Pg. 24) MS Path Support (Pg. 25) Men's Club Dinner (Pg. 27)	9 Educators' Shabbat (Pg. 20)	10 Havdalah at the Planetarium (Pg. 18)
11 College Dinner Date (Pg. 10) Pizza & Pages (Pg. 23)	12 ASK: After Anatevka (Pg. 20)	13 Israel Mission Lecture (Pg. 20) L'Chayyim-Wine Making (Pg. 20) Caregiver Support (Pg. 24) Travel Through the Eyes of an Artist (Pg. 28)	14	15 Dinner & Movie (Pg. 10) Bridges (Pg. 11) Mommy & Son Bowling (Pg. 16) Mi Shebeirach Blanket Making Day (Pg. 25) For Men Only Support (Pg. 25)	16	17 Shabbat for Tots (Pg. 9)
18 Quest Event (Pg. 13)	19 TI Adult Book Club: <i>Mischling</i> (Pg. 23)	20 Food Pantry (Pg. 7) A Little Art and a Lot of Fun (Pg. 21) TI Adult Book Club: <i>Mischling</i> (Pg. 23) Caregiver Support (Pg. 24)	21	22 Gateway to Oneness (Pg. 20) Bereavement Support (Pg. 24) MS Path Support (Pg. 25)	23	24
25 Shushan Hold'Em Tournament (Pg. 27)	26	27 Caregiver Support (Pg. 24)	28 Adult Purim Spiel (Pg. 4)	1 Game Day (Pg. 10)	2	3



USPS 538-040

5725 Walnut Lake Road | West Bloomfield, Michigan 48323
248-661-5700 • Fax: 248-661-1302 • Information Hotline: 248-661-5733
Tyner Religious School: 248-661-5725 • Fax: 248-661-5790
The Susan & Rabbi Harold Loss Early Childhood Center: 248-661-5750
Temple-Israel.org

Volume 60 • February 2018 • Number 1
Affiliated with the Union for Reform Judaism

PERIODICAL
POSTAGE PAID
at
Royal Oak, MI 48068

Time sensitive material enclosed.

Clergy

Rabbi Harold S. Loss | Rabbi Paul M. Yedwab
Rabbi Joshua L. Bennett | Rabbi Marla R. Hornsten
Rabbi Jennifer T. Kaluzny | Rabbi Jennifer M. Lader
Cantor Michael Smolash (*The Stephen Gottlieb₂₋₁ Cantorial Chair*)
Cantor Neil Michaels (*The Stephen Gottlieb₂₋₁ Cantorial Chair*)

Rabbi Leon Fram (1895-1987) | Rabbi M. Robert Syme (1920-2003)
Cantor Harold Orbach (1931-2014) | Cantor Robert Tulman (1904-1960)

Professional Staff

Rabbi Arianna L. Gordon, RJE - *Education & Lifelong Learning Director*
Rabbi Dan Horwitz - *Director of The Well*
David M. Tisdale - *Chief Executive Officer*
Alan Harris - *Chief Operating Officer*
Julie Eisman Levy - *Early Childhood Center Director*
Kari Provizer, LMSW, ACSW - *Family Life Center Director*
Tracie Fienman - *Programming Director*
Lauren Marcus Johnson - *Libraries and Media Center Director*
Marc S. Grossman, C.P.A. - *Controller*
Eric Groh - *Facilities Director*

Officers

Edward M. Royal - *President* | Hilary King - *Vice President*
Michael Curhan - *Vice President* | Joseph Bigelman - *Treasurer*
Ellie Bittker - *Secretary* | Bryant M. Frank - *Member at Large*
Julie August - *Past President*



Sunday, March 4, 2018
See page 5 for more information.

