



# MESSENGER

FEBRUARY 2017 • SHEVAT/ADAR 5777 • Volume 59 No. 1

FUNDED BY THE PAUL AND LOIS KATZMAN ENDOWMENT

## Bright Hearted Laker Concert

See page 14 for details!

3.26.17 • 4 pm

Featuring Cantor Michael Smolash

The Laker concert is sponsored in loving memory of Sarah & Harry Laker.





Rabbi Jennifer Kaluzny

## REBUILD, REPLANT, RESTORE

Tu B'shvat is the birthday of the trees. For us here in Michigan, celebrating trees in what still feels like the middle of winter seems odd, but in Israel, buds are beginning to appear and soon, trees, plants, and flowers will once again be in bloom. But in many places in Israel, this Tu B'shvat will undoubtedly feel different. This past November, Israel suffered 2,652 separate fires, 39 of which were considered major fires, scorching roughly 32,000 acres of national forest and brush. Some of the fires were accidental, and some are believed to be the result of arson. About 500 homes were destroyed, and over 100 people were injured. It was frightening for Israelis and those of us watching from abroad.

The Jewish National Fund initiated the 'Rebuild. Replant. Restore' fund which raised over six million dollars. Most of this money will go to forest fire prevention, purchase of new fire trucks and the building of new fire houses. It will not go to replanting trees. How is this possible? So many trees were burned, and that's what JNF does, right? How many of us have had the experience of planting trees in Israel, or donating trees in honor or memory of people we love?

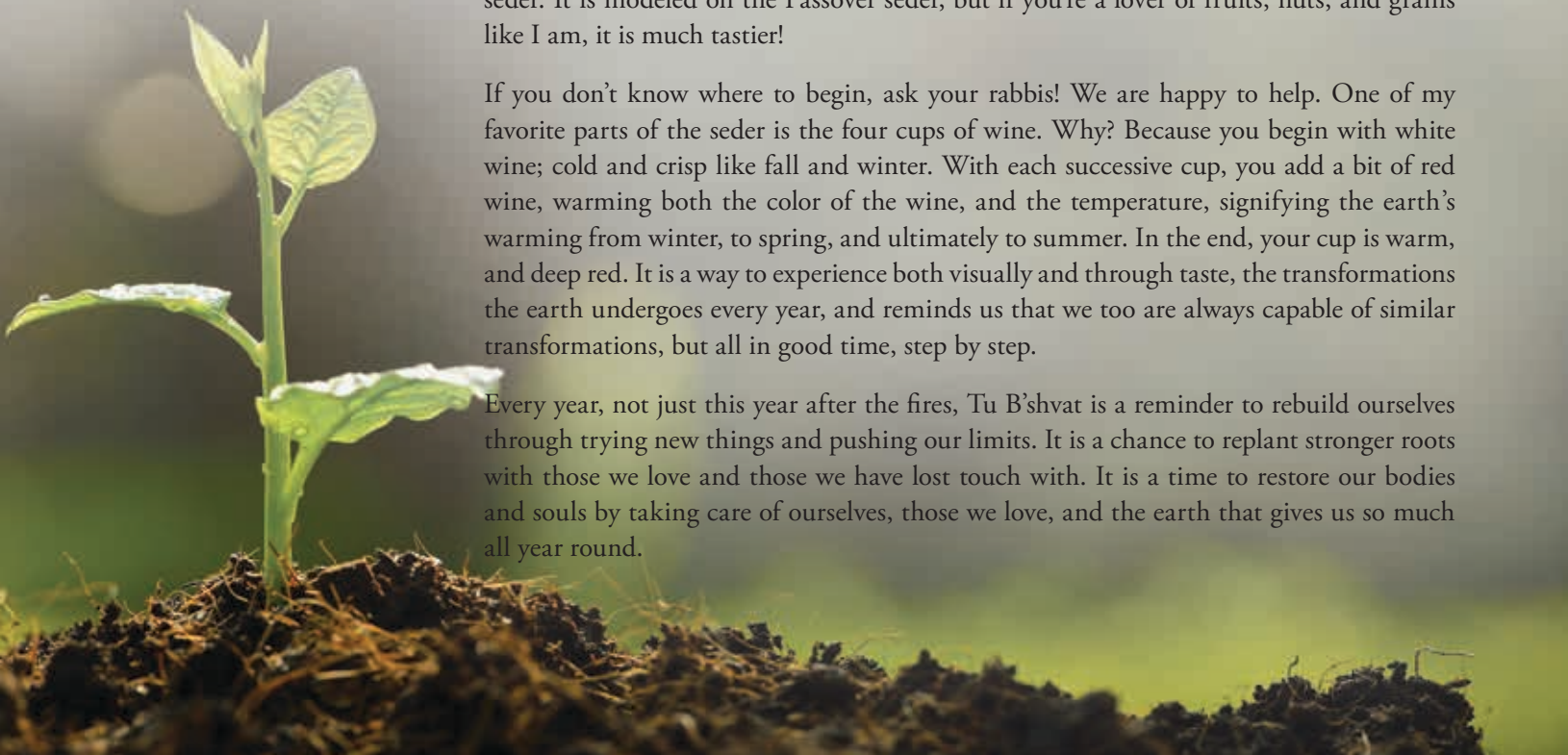
This year, after the fires, I think we can view Tu B'shvat as a time when we can implement our own personal 'rebuild, replant, restore' initiative. So many of us burn the candle at both ends, and oftentimes, find ourselves burnt out. We put ourselves through our own personal forest fires. Tu B'shvat can serve as a reminder that we, like forests, need time, space, and tools to grow once again to our greatest potential. Quick fixes, like planting trees in burnt soil, aren't always the answer.

So how can Tu B'shvat teach us to rebuild, replant, and restore? First, it encourages us to try new foods. It is an opportunity to connect with fresh foods like figs, dates, pomegranates, and olives; foods that also connect us to the land of Israel. The holiday forces us to ask ourselves: what nourishes me? Have I laid down strong roots in my family, my community, my Temple?

You can explore the foods, and these kinds of questions, by hosting your own Tu B'shvat seder. It is modeled on the Passover seder, but if you're a lover of fruits, nuts, and grains like I am, it is much tastier!

If you don't know where to begin, ask your rabbis! We are happy to help. One of my favorite parts of the seder is the four cups of wine. Why? Because you begin with white wine; cold and crisp like fall and winter. With each successive cup, you add a bit of red wine, warming both the color of the wine, and the temperature, signifying the earth's warming from winter, to spring, and ultimately to summer. In the end, your cup is warm, and deep red. It is a way to experience both visually and through taste, the transformations the earth undergoes every year, and reminds us that we too are always capable of similar transformations, but all in good time, step by step.

Every year, not just this year after the fires, Tu B'shvat is a reminder to rebuild ourselves through trying new things and pushing our limits. It is a chance to replant stronger roots with those we love and those we have lost touch with. It is a time to restore our bodies and souls by taking care of ourselves, those we love, and the earth that gives us so much all year round.





## CELEBRATE THE NEW MOON AND A NEW MONTH!



# Rosh Chodesh

This women's spirituality group gathers monthly to discuss important issues of religious and current events.

7:30 pm • Temple Israel

*Adar: Tuesday, February 28<sup>th</sup>*

*For details and to RSVP, please contact Kim Heraud at  
kim@temple-israel.org or 248-661-5700.*

## WEEKDAY SERVICES FOR DAILY MINYAN

A wonderful way to start your day, to support fellow congregants in worship, and to bond with your community.

**Monday - Thursday • 7:30 am ~ Sundays and Holidays • 9 am**  
Coffee, juice, and bagels are available. Please join us.

*Funded by Lipson Family Minyan Fund and The Samson Family Minyan Fund.*

## SHABBAT SOLOS

Shabbat Solos...a group that sits together at the Kabbalat Shabbat Friday night services, for those attending services alone or for the first time. Like to help, join the group or know someone who could benefit from it?

*Contact Nancy Meininger at 248-770-5007 or Nancy@ShabbatSolos.com.*

## IN THIS ISSUE

### T'fillah — Worship

- 3** | Religious Services
- 6** | Save the Dates! Purim 2017

### Tochnit — Programs

- 8** | Temple Life
- 9** | Upcoming Events
- 13** | MITZVAH 613
- 14** | Music
- 22** | Libraries & Media Center
- 25** | Robert Sosnick Family Life Center
- 43** | In Review - SOS

### Torah — Education

- 16** | Susan & Rabbi Harold Loss Early Childhood Center
- 19** | Family Education
- 19** | Tyner Religious School
- 20** | Adult Education

### K'hillah — Get Involved

- 15** | Young Adults (20s - 40s)
- 18** | Youth
- 30** | Sisterhood
- 32** | Brotherhood

### G'Milut Chassadim — Helping Others

- 7** | Volunteer Opportunities
- 34** | Temple Family
- 36** | Tributes

## CAN'T MAKE SERVICES? YOU CAN STILL BE WITH US!

### Live Video Streaming

**For your convenience, streaming is now available on all Apple products including iPads and all other mobile devices.**

**Korman Hall Services Live** - To watch the service, just go to our website at [www.temple-israel.org](http://www.temple-israel.org) and click on the live streaming link. Remember, this is live—the stream will start promptly at the beginning of services, just as if you were there in person. **\*\*Please note we have upgraded the service that provides us with streaming. You may need to update your Adobe Flash Player. You can do this by following the link on our streaming page.** Streaming video is best viewed with a cable modem. Using a slower internet connection, for example DSL, will cause the video to load slowly and appear choppy.

**To view any archived services, please visit our YouTube channel at [www.youtube.com/TempleIsraelMI](http://www.youtube.com/TempleIsraelMI).**

**For assistance with the Live Stream please call 248-785-0870.**

**Friday, February 3****7:30 pm Kabbalat Shabbat****7:30 pm Shabbat in the Sun –  
Boca Raton, FL****8 pm Sanctuary Services****Torah Portion: Bo**

**KATE ASHTON MICHAELS**, daughter of Jenny and Eric Michaels; grandchild of Jessica and Stanton Walker and Sheri and the late Dr. William Michaels. Kate is a student at Bloomfield Hills Middle School. Her hobbies and interests include tennis, skiing and cooking. As part of her mitzvah project, Kate volunteered at Temple Israel for the Pizza and Pages program helping out with stories, crafts and games. Additional mitzvah experiences included volunteering at Temple Israel and Forgotten Harvest's Free Fresh Food Pantry and donating winter clothing and cold weather items to the Baldwin House.

**Saturday, February 4****10:30 am Sanctuary Services**

**ASHLEY NICOLE FOGEL**, daughter of Randi and Ron Fogel; grandchild of Sheri and Jeffrey Weiss and Sally and Barry Fogel. Ashley attends West Hills Middle School. She enjoys participating in the West Hills Forensic Team and attending Camp Tamarack. For her mitzvah project, Ashley began her own pop can drive to raise money to purchase new games, decks of cards and puzzles for the seniors of Fleischman Residence where she has been passionate about volunteering and continues to volunteer. She also gave her time to help out at the Temple Israel Labor Day Picnic.



**JACOB HENRY SMALL**, son of Jenny and Scott Small; grandchild of Leanne and Dr. Richard Small, Margaret and Randy Goins and Sharon and Edward Zucal; great-grandchild of Betty Zucal. Jacob is a student at Orchard Lake Middle School. His hobbies include soccer, skiing and playing the cello. He is a black belt in Karate and held a major role in the production of the *Music Man* at the Costick Center. For his mitzvah project, Jacob volunteered throughout the summer at the Orchard Lake Middle School garden and at the Temple Israel Labor Day Picnic. Additionally, Jacob donated a portion of his Temple Israel - Outstanding Hebrew Student prize to Gleaners Community Food Bank where he also volunteered.

**5 pm PJ's Pancakes & Prayer****Friday, February 10****7:30 pm Kabbalat Shabbat****8 pm Sanctuary Services****Torah Portion: B'shalach**

**GRAHAM BENJAMIN SMITH**, son of Karen Benjamin and Jordan Smith; grandchild of Barbara and Norman Benjamin and Gaye and Martin Smith. He is a student at West Hills Middle School. His hobbies and interests include playing baseball for the NFWB Cobras, basketball and running cross-country and track for the West Hills Middle School teams. He also enjoys summers at Camp Tamakwa. For his mitzvah project, Graham volunteered at the Friendship Circle and helped out at Temple Israel's Labor Day Picnic.

**Saturday, February 11****10:30 am Sanctuary Service**

**JAKE PARKER SAKS**, son of Jennifer Saks and the late Brian Saks; grandchild of Alene and Donald Shiffman, Trudy Saks and the late Stan Saks. Jake is a student at James R. Geisler Middle School. His hobbies and interests include playing baseball and other sports, staying active, sports statistics and his education. As part of his mitzvah experience, Jake shared his love of baseball by volunteering as a buddy with the Miracle League, a charitable organization that provides children with disabilities an opportunity to play baseball as a team member in an organized league. He also donated tzedakah to the Holocaust Memorial Center and volunteered at Temple Israel's Simchat Torah family program.

**11 am Chapel Service**

**DAVID HENRI ZAUBERMAN**, son of Amy Jacknow and Jeff Zauberman; grandchild of Marcel and the late Esther Zauberman and the late Muriel and the late David Jacknow. David is a seventh grade student at Hillel Day School. His hobbies and interests include running, soccer, basketball, piano, computer and video games. As part of his mitzvah project, David gave his time volunteering at Temple Israel's Labor Day Picnic and playing bingo with the seniors at Fleischman Residence. David has also grown out his hair for donation to the non-profit organization Children With Hair Loss.

**5 pm Chapel Havdalah Service****Torah Portion: Yitro**

**CAROLINE ROSE LIPPITT**, daughter of Dr. Denise and Ron Lippitt; grandchild of Elaine and David Lippitt, Linda and Ken Rudisel, Marjie and Stephen Ziff and the late Don Messing; great-grandchild of Vivian Smith. Caroline is an honor student at Clifford Smart Middle School. She is passionate about animals and has been taking horseback riding lessons for the past five years with a concentration on English riding and jumping. She volunteers regularly at Union Lake Veterinary Hospital with "Puppy Preschool" and has a dog walking business. For her mitzvah project, Caroline volunteered at the Friendship Circle and at the Temple Israel Labor Day Picnic. She also donated tzedakah to Mazon: A Jewish Response to Hunger.

**6 pm Sanctuary Havdalah Service**

**SOPHIE MORGAN BLUMBERG**, daughter of Mindy and Loren Blumberg; grandchild of Barbara and the late Leonard Saltz and Leone and the late Jules Blumberg. Sophie is a student at Warner Middle School. Her hobbies and interests include swimming, tennis and bike riding. For her mitzvah project, Sophie raised over \$1,100 for Make-A-Wish Foundation by riding her bike in the Wish-A-Mile Fundraiser. As a Wish Kid herself, this was exceptionally special to her. Sophie also volunteered at Temple Israel for the holiday party for the South Oakland Shelter residents and participating in the Free Fresh Food Pantry.

**Friday, February 17****7:30 pm Kabbalat Shabbat****8 pm Sanctuary Service****Torah Portion: Yitro**

**CARSON GARRETT BRODSKY**, son of Susan and Dr. Burton Brodsky; grandchild of Linda and the late Dr. Easton Brodsky and Phyllis and John Hassey; great-grandchild of Juanita Victor. Carson is a student at Bloomfield Hills Middle School. Carson enjoys soccer, basketball, baseball, hockey and attending Camp Walden. For his mitzvah experience, Carson volunteered at Temple Israel's Senior Shabbat Luncheon and at Forgotten Harvest packaging food and making sandwiches. Additionally, Carson raised funds for the Humane Society by organizing a father-son basketball game charity event.





**CHASON ALEXANDER BRODSKY**, son of Susan and Dr. Burton Brodsky; grandchild of Linda and the late Dr. Easton Brodsky and Phyllis and John Hassey; great-grandchild of Juanita Victor. Chase is a student at Bloomfield Hills Middle School. His hobbies and interests include skiing, baseball and basketball. As part of his mitzvah project, Chase organized a father-son baseball game fundraiser from which all proceeds were donated to the Humane Society. Additional mitzvah experiences included making sandwiches and packaging food at Forgotten Harvest and volunteering at Temple Israel for a Senior Shabbat and Luncheon.



**Saturday, February 18**  
**10:30 am Sanctuary Service**

**ALEC WALKER MAYORAS**, son of Danielle and Andrew Mayoras; grandchild of Diane and Ronald Barron and Sally and David Mayoras. Alec is a student at West Hills Middle School. His hobbies and interests include basketball, baseball, soccer, writing for the school newspaper and spending summers at Camps Walden and Tamarack. As part of his mitzvah project, Alec volunteered with his peers at the Temple Israel Labor Day Picnic and playing bingo at Jewish Senior Life Fleischman Residence. Alec also donated funds to Gleaners Food Bank to feed families for Thanksgiving.



**ROSE SERENA MAYORAS**, daughter of Danielle and Andrew Mayoras; grandchild of Diane and Ronald Barron and Sally and David Mayoras. Rose is a student at West Hills Middle School. Her hobbies and interests include competitive gymnastics, reading and spending summers at both Camp Tamarack and the International Gymnastics Camp. For her mitzvah project, Rose volunteered at the Fleischman Residence playing bingo with the seniors and at Temple Israel for the Labor Day Picnic. For her tzedakah portion of her mitzvah experience, Rose donated toys to a special needs classroom.



**6 pm Sanctuary Havdalah Service**  
**Torah Portion: Mishpatim**

**AIDAN SAMUEL KAMEN**, son of Cheryl and Eric Kamen; grandchild of Louise and Joseph Benstein and Sharon and the late Manny Kamen. Aidan is a student at Sarah Banks Middle School. His hobbies and interests include art, singing and cooking. For his mitzvah project, Aidan volunteered with his peers at the Temple Israel Labor Day Picnic and at the Friendship Circle. Aidan also raised funds for the Crohn's & Colitis Foundation of America by taking part in the event "Take Steps for Crohn's & Colitis" which is dedicated to raising awareness and funds for those affected by this disease.



**EVAN MANNY KAMEN**, son of Cheryl and Eric Kamen; grandchild of Louise and Joseph Benstein and Sharon and the late Manny Kamen. Evan is a student at Sarah Banks Middle School. His hobbies and interests include lacrosse, cross country and track. As part of his mitzvah experience, Evan helped to raise funds and bring awareness to Crohn's & Colitis by participating in the organization's walk "Take Steps for Crohn's & Colitis". The walk helps to provide hope for better treatments and cures and connect the community so no one affected by this disease feels alone in their journey. Additional mitzvah projects included volunteering at the Friendship Circle and at Temple Israel's Labor Day Picnic.

**Friday, February 24**  
**7:30 pm Kabbalat Shabbat Service**



**Saturday, February 25**  
**11 am Chapel Service**  
**Torah Portion: Mishpatim**

**JACOB MORTON KARP**, son of Bruce and the late Jennifer Karp; grandchild of Ronda and the late Morton Karp and Nancy and Uri Sofer. Jacob is a student at Orchard Lake Middle School. His hobbies and interests include baseball, CrossFit and video games. For his mitzvah experience, Jacob volunteered at the Free Fresh Food Pantry at Temple Israel in conjunction with Forgotten Harvest. He also made blankets and treats for the residents of the South Oakland Shelter residing at Temple Israel for a week in December.



**6 pm Sanctuary Havdalah Service**  
**Torah Portion: T'rumah**

**ABBEY NICOLE WEITZMAN**, daughter of Tracy and Allan Weitzman; grandchild of Linda Sherman, Larry Sherman and Rebecca and Cary Weitzman; great-grandchild of Virginia and Leo Jacobs. Abbey is a student at West Hills Middle School. Her hobbies and interests include cross country, volleyball, travelling and attending Camp Tamarack. As part of her mitzvah project, Abbey organized a fundraiser to benefit a first grade classroom in Detroit Public Schools. She raised over \$1,600 which she used to procure and donate school supplies, hat, gloves and socks to the class. Additionally, Abbey gave her time helping out at Temple Israel for the Labor Day Picnic.



## MACCABI GAMES SCHOLARSHIP

If you are participating in the 2017 Maccabi Games, you can apply for a scholarship to assist in defraying the costs. **The deadline for applying is March 1, 2017.** The child that is participating should send a letter requesting assistance to David Tisdale at Temple Israel. Please include the sport or activity and the location of the games.



*For more information, please contact Lynn Quigg at 248-661-5700 or [lquigg@temple-israel.org](mailto:lquigg@temple-israel.org)*

*This scholarship is sponsored by the Zachary M. Talan Edelson Maccabi Fund*

SAVE THE DATES! PURIM 2017

# Like A Rolling Prune

A Protest Purim Spiel

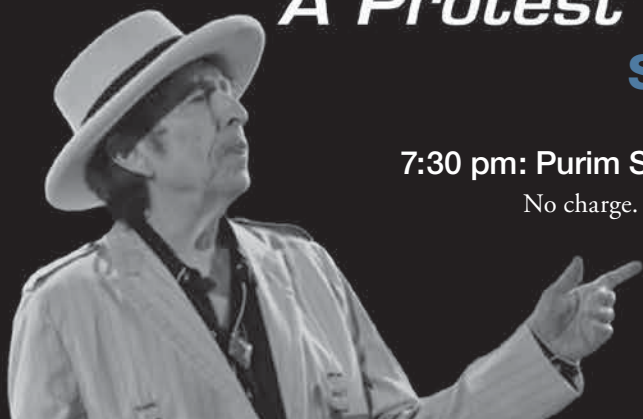
**ADULTS ONLY**

**SATURDAY, MARCH 11**

7 pm: Wine, appetizers & music

7:30 pm: Purim Spiel begins, followed by dancing and hamentashen

No charge. Open to the community. Casual dress or come in costume!



## KIDS FUN NIGHT!

Complimentary babysitting  
available for children 2 years and  
above with advance RSVP only.  
Details of activities to come.

For more information and to  
RSVP, contact the Education  
Office at 248-661-5725 or  
[lkaplan@temple-israel.org](mailto:lkaplan@temple-israel.org).

## BE OUR GUEST BEAUTY AND THE BEAST CHILDREN'S PURIM SPIEL

**SUNDAY, MARCH 12**

10:45 am: Children's Purim Spiel

For more information contact Stephanie Brovenick at 248-661-5700  
or [stephanie@temple-israel.org](mailto:stephanie@temple-israel.org).



## YFTI PURIM CARNIVAL SUNDAY, MARCH 12

9:30 - 10:45 am: Special carnival for kids 4 and under  
\$5 per child • Play unlimited games with age appropriate prizes.

11:50 am - 2 pm: Games for all ages

Raffles • Moonwalks • Food • And More!

Admission is free • Game tickets are 4 for \$1.

All proceeds go toward scholarships for youth programs.

Temple Israel is seeking corporate sponsors for this event.  
Please contact Ethan at [ethan@temple-israel.org](mailto:ethan@temple-israel.org) for more info.



# VOLUNTEER OPPORTUNITIES



## HOW CAN PARENTS HELP?

Do you have middle/high school students that need volunteer credits? We need their help!



*Social Action Programming is sponsored by the Lynn and Harvey Rubin Social Action Fund.*

## WHAT IS PROJECT HEALTHY COMMUNITY?

We are a non-profit community partnership between Temple Israel, Hartford Memorial Baptist Church, Northwest Activities Center, Gleaners, Forgotten Harvest and members of the Detroit and suburban communities helping children, families and seniors in need with health, nutrition and educational programs.

## WHAT WE DO

Nutritional food programs and after school enrichment and tutoring programs

Monthly food pantry distributing more than 20,000 lbs of food to 300+ needy families

Food & clothing drives for Detroit schools

Summer-in-the-City Day Camp

Urban gardens

**Please call Karen Rubenfire at 248-892-4585 to find out how you can help improve the lives of families in NW Detroit through PHC programs.**

**ProjectHealthyCommunity.org**



## SUPPORT TEMPLE BY SHOPPING AT KROGER

ATTENTION all Kroger Shoppers: The easiest fundraiser ever is a couple clicks away, and it doesn't cost you a penny! Designate Temple Israel as your Community Rewards organization and Kroger will start donating a percentage of your purchases to Temple.

**Please visit [Temple-Israel.org/Kroger](http://Temple-Israel.org/Kroger) to enroll your Kroger card or switch your organization to Temple.**

Once completed, your card is enrolled and Temple will receive a percentage of your total purchases.

Each May you will need to re-enroll Temple as your organization to continue participating.

If you need help with re-enrolling or registering, call 1-800-KROGERS for customer service.

**THANKS FOR SUPPORTING TEMPLE ISRAEL!**

Every little donation helps, and your participation is greatly appreciated.

## Volunteer at Dixon

**Help make a difference in a child's life!**



Temple Israel is thrilled to be continuing our partnership with Dixon Educational Learning Academy in Detroit. The school serves students in kindergarten through 8th grade with a loving staff and environment where children are first. Dixon Elementary/Middle School has a uniform dress code. Temple **VOLUNTEERS ARE NEEDED** to help read with kindergarten students. Days and times are flexible.

*Interested? Please contact Randi Simko at 248-661-5700 or [randi@temple-israel.org](mailto:randi@temple-israel.org).*

*Social Action Programming is sponsored by the Lynn & Harvey Rubin Social Action Fund.*

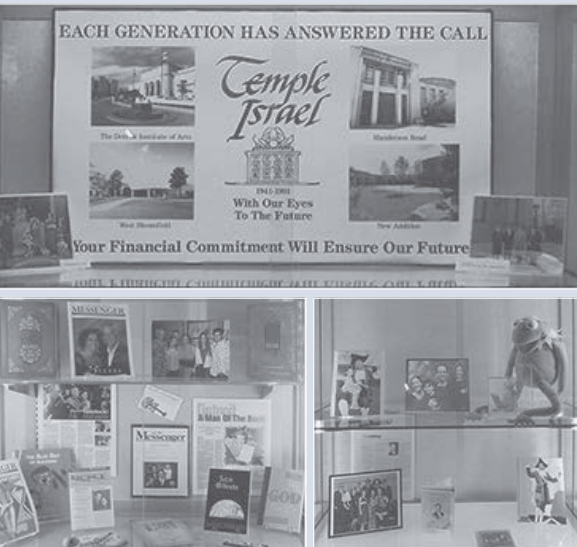


Looking for a rewarding volunteer opportunity with minimal time commitment? Deliver food to homebound with Yad Ezra on **Sunday, February 26, 2017.**

*For more information, contact Randi Simko at 248-661-5700 or [randi@temple-israel.org](mailto:randi@temple-israel.org)*

*Social Action Programming is sponsored by the Lynn & Harvey Rubin Social Action Fund.*

## The Goodman Family Judaic & Archival Museum



Continuing in February, Temple Israel's Goodman Family Judaic & Archival Museum is pleased to feature a rotating year-long, beautiful exhibit in honor of Temple Israel's 75th Anniversary. The first phase of this exhibit highlighted our "Building & Clergy," our second phase, "Schools & Temple Programs" is currently on display, and the exhibit will conclude with "Travel & Affiliate Groups."



## JVS OFFERS NEW EXPERIENCES JOB INTERNSHIPS FOR AGES 50+

Full time, paid internships in a variety of fields. Minimum age (50+) and income requirements apply.

For more information, contact  
Gerard Baltrusaitis at 248-233-4288  
or gbaltrusaitis@jvsdet.org

## Green Corner: EYEGGLASS RECYCLING

Temple Israel is pleased to partner with the Lions Club of Novi in an eyeglass recycling program. Lions have been collecting glasses for more than 80 years. Refractive errors can be easily corrected with eyeglasses, yet millions in developing nations lack access to basic eye care services. Lions have recognized the urgent need for corrective lenses and continue to lend their support to the Lions Recycle for Sight Program. Congregants may drop off eyeglasses in the drop box at the Tyner entrance.

## INK CARTRIDGE RECYCLING

Temple Israel is part of a cartridge recycling program, which provides an easy method for recycling used ink jet and laser print cartridges. Congregants may drop off their empty ink jet and laser cartridges in the collection bin at Temple's Tyner entrance. Please remove your cartridges from boxes or bags before placing them in the box. Thank you for your participation!

## BATTERY RECYCLING

Temple Israel is pleased to partner with Batteries Plus in Farmington Hills in this recycling initiative! Improper disposal of batteries can lead to contamination of soil and ground water. Recycling transforms the harmful elements from landfills into new products ranging from wheel weights to chrome vehicle bumpers.

We have collection bins in the Tyner entrance. We will collect most types of batteries (alkaline, cell phone, laptop, etc...) NO CAR BATTERIES, PLEASE.

*Questions? Please contact Randi Simko at 248-661-5700 or randi@temple-israel.org.  
Social Action Programming is sponsored by the Lynn & Harvey Rubin Social Action Fund.*

## POP TAB COLLECTION

Temple Israel will collect pop tabs for the Ronald McDonald House of Detroit on an ongoing basis. Please help by collecting and bringing your pop tabs to the drop box at the Tyner School entrance! Collecting pop tabs helps support the operations of Ronald McDonald Houses. Questions?

Please contact Randi Simko  
at 248-661-5700 or  
randi@temple-israel.org.

Funded by the Lynn & Harvey Rubin  
Social Action Fund



RONALD McDONALD  
HOUSE CHARITIES



## SAVE THE DATE

Shabbat  
Mishpacha

This unique family  
service is held each  
month during the  
school year.

PJs PANCAKES  
& PRAYER

**Saturday, February 4**

**5 pm crafts & activities, followed by dinner and Havdalah**

Join our Temple Israel clergy for a fun-filled evening. Together we will learn about Jewish bedtime rituals with unique crafts, enjoy a delicious pancake dinner in our pajamas and celebrate the end of Shabbat with a relaxing Havdalah service.

**Celebrating February Birthdays**

*Thanks to the Schelberg Family Shabbat Birthday Fund, all children 12 and under who celebrate their birthday at the monthly Shabbat Mishpacha Services receive the gift of a Jewish book.*

*Reservations are requested by Monday, January 30th. \$12 for adults; \$6 for kids 4-12; kids under 4 are free.*

Register online at: <http://tinyurl.com/zfyej5v>

Questions? Contact Randi Simko at [randi@temple-israel.org](mailto:randi@temple-israel.org) or 248-661-5700.



Shabbat  
Mishpacha

**Saturday, March 25**

**10 am service, followed by  
crafts and snacks**

**NATURE** – On this Shabbat, come one and all for an energetic romp across God's wide, wonderful planet prompting kids to join in the experience of nature while cheerfully guiding them in the adventure of caring for the world. Kids and caring adults alike will have a blast exploring and learning to protect our earthly home with music, dancing and a special project!

**Celebrating March Birthdays**

*Thanks to the Schelberg Family Shabbat Birthday Fund, all children 12 and under who celebrate their birthday at the monthly Shabbat Mishpacha Services receive the gift of a Jewish book.*

*There is no cost to attend, however, reservations are requested by Monday, March 20th.*

Register online at: <http://tinyurl.com/ShabbatMishpachaNature>

Questions? Contact Randi Simko at [randi@temple-israel.org](mailto:randi@temple-israel.org) or 248-661-5700.

## IN REVIEW - SHABBAT MISHPACHA: "MIRACLES" CHANUKAH CELEBRATION

On Saturday, December 17th, over 35 young families joined together for a Shabbat Mishpacha Chanukah celebration, as we celebrated miracles large and small! The evening began with Chanukah activities and crafts, followed by a delicious latke dinner and sufganiyot to decorate for dessert. Evening festivities came to a close with a rockin' Chanukah song session and Havdalah service led by Rabbi Lader, Rabbi Kaluzny and Cantor Smolash.





Free Fresh Food for those in need. Pick up food at Temple Israel the first and third Tuesday of every month from 3 - 5 pm.

**TUESDAY, FEBRUARY 7**  
**TUESDAY, FEBRUARY 21**

For more information, contact Elaine Bertsch at 248-661-5700 or [elaine@temple-israel.org](mailto:elaine@temple-israel.org).

Social Action Programming is sponsored by the Lynn and Harvey Rubin Social Action Fund.



## COLLEGE CONNECTION

*Do you have a student going off to college? How about one or two of them already there?*

Make sure they stay connected with Temple Israel by signing them up for our College Connection. It's easy! We just need the information listed below and we'll get him/her connected. Once we have your student's contact information, he or she will receive the Temple Israel Messenger, information on special events occurring in the Jewish world, and invitation to dinner sponsored by Brotherhood, gift packages for the holidays and more!

Please send your student's name, school and expected year of graduation, college address (including apartment or dorm number), cell phone and email to Randi Simko at 248-661-5700 or [randi@temple-israel.org](mailto:randi@temple-israel.org).

## JOIN US FOR AN AFTERNOON MOVIE AT THE MAPLE THEATER!



All movies begin at 1 PM, followed by a facilitated discussion. 4135 W. Maple Road, Bloomfield Hills

**10 Member/\$12 Guest**  
Program includes coffee and nosh.

For more information, contact Randi Simko at [randi@temple-israel.org](mailto:randi@temple-israel.org) or 248-661-5700.

### WEDNESDAY, FEBRUARY 15 – CUPCAKES

Set in contemporary Tel Aviv, six diverse best friends gather to watch the wildly popular UniverSong competition. Appalled by the Israeli entry, they decide to create their own and record it on a mobile phone. Unbeknownst to them, their performance is seen by the UniverSong judges and selected as Israel's entry for next year's competition. With irresistibly catchy tunes and a gloriously uplifting storyline, this laugh-out-loud comedy is a refreshing ode to music, friendship and romance.

Register online at: [tinyurl.com/hdped2j](http://tinyurl.com/hdped2j)



### WEDNESDAY, MARCH 15 – FOOTNOTE



The tale of a great rivalry between a father and son, two eccentric professors, who both dedicated their lives to work in Talmudic Studies. The father, Eliezer, is a stubborn purist who fears the establishment and has never been recognized for his work. His son, Uriel, is an up-and-coming star in the field, who appears to feed on accolades, endlessly seeking recognition. Then one day, the tables turn. In a darkly funny twist, Uriel is forced to choose between the advancement of his own career and his father's. Will he sabotage his father's glory?

Register online at: [tinyurl.com/hcb4zr8](http://tinyurl.com/hcb4zr8)

## COLLEGE DINNER DATES

Sunday nights in the winter can be lonely on a college campus. Beat the "winter blahs" by joining Temple Israel for a few dinners and evenings filled with good company!

The Temple Israel clergy will dine with our college students on the following dates:

### ANN ARBOR

**Sunday, February 12, 5:30 pm • HopCat (311 Maynard St)**

Register online at: [Temple-Israel.org/CollegeDinnerAA](http://Temple-Israel.org/CollegeDinnerAA)

### EAST LANSING

**Sunday, February 26, 5:30 pm • HopCat (300 Grove St)**

Register online at: [Temple-Israel.org/CollegeDinnerEL](http://Temple-Israel.org/CollegeDinnerEL)

Reservations are required. Questions? Contact Randi Simko at 248-661-5700 or [randi@temple-israel.org](mailto:randi@temple-israel.org).

The college dinners are graciously sponsored by the Temple Israel Brotherhood.





# Grandparents Retreat

at Splash Village in Frankenmuth

**Saturday, March 4<sup>th</sup> – Sunday, March 5<sup>th</sup>**

Temple Israel invites you to bring your grandchildren for a fun-filled overnight retreat at Splash Village in Frankenmuth.

**\$250**  
per family, includes:  
standard hotel room,  
waterpark passes, dinner,  
dessert and breakfast  
for up to 4 people

**\$375**  
per family, includes:  
family suite, waterpark  
passes, dinner, dessert  
and breakfast for up  
to 6 people

Grandparents and grandchildren join us for an overnight retreat with swimming, dinner, dessert, Havdalah with Temple Israel clergy and breakfast the next morning.

**Space is limited & reservations are requested by February 1st.**

For more information, or to RSVP, contact  
Randi Simko at [randi@temple-israel.org](mailto:randi@temple-israel.org)  
or 248-661-5700.

*This program is supported  
by the Stark Family Fund.*



Please contact  
us for information  
on additional children  
and for rooms to  
accommodate  
7+ guests.



**THURSDAYS**

**FEBRUARY 2 • MARCH 2**

Join us anytime from 11 am - 3 pm to play your favorite game... Canasta, Bridge, Mah Jongg, Pinochle, or Euchre. You bring your friends and your favorite game...we will provide the tables and lunch will be served at noon.

**COST: \$10/MEMBER • \$12/NON-MEMBER**

**RESERVATIONS AND PAYMENT ARE  
REQUIRED BY THE MONDAY PRIOR TO GAME DAY.  
FOR ALL RESERVATIONS RECEIVED AFTER MONDAY,  
THE COST WILL BE \$15/PERSON.**

**REGISTER ONLINE THROUGH CHAVERWARE:**

February: <http://tinyurl.com/Game-Day-2-2-17>

March: <http://tinyurl.com/Game-Day-3-15-17>

or RSVP to Randi Simko at [randi@temple-israel.org](mailto:randi@temple-israel.org)  
or 248-661-5700.

## SAVE THE DATE!

# Shabbat in the Sun

Come spend a winter Shabbat with  
Temple Israel clergy and friends from home!  
**Mark your calendar for Shabbat in the Sun:**

**BOCA RATON, FLORIDA**  
**Friday, February 3, 2017 • 7:30 PM**

Olympic Heights Community High School  
20101 Lyons Rd | Boca Raton, FL

*Please do not call the school for information about this event.  
All questions should be directed to Temple Israel.*

*The service is complimentary, but we do ask that you RSVP with the number of people who will be attending.  
Contact Lynn Quigg for more information and to RSVP, 248-661-5700 or [lquigg@temple-israel.org](mailto:lquigg@temple-israel.org).*



We are thrilled that you have joined Temple Israel, one of the largest Reform congregations in North America. New members, like you, are the future of our congregation and the future of our Jewish community. Our clergy, staff and officers would like to meet you and get to know you better!

Please join us at these three sessions that will provide a foundation for your meaningful Temple membership:

**Thursday, February 16, 2017 • 6 pm**

**Thursday, March 23, 2017 • 6 pm**

**Tuesday, April 25, 2017 • 6 pm**

Dinner will be served at all sessions. There is no charge and we hope that you will attend all three sessions. Please join us for what is certain to be a memorable experience.

*To register, please contact Randi Simko at 248-661-5700 or [randi@temple-israel.org](mailto:randi@temple-israel.org).*

## SAVE THE DATE:

*Celebrate  
Temple's 75th!*

**Saturday, April 22, 2017**

with an incredible evening of food, friends and festivities!

*More information will follow later,  
but mark your calendar today.*

## The Alicia Joy Techner Memorial Parenting Series

**Thursday, February 9, 2017 • 7 pm**



**Julie Tarney**

***My Son Wears Heels:  
One Mom's Journey  
from Clueless to Kickass***



**See back cover for a full description of this event  
and for registration information.**

## Temple Israel ECC Family Camp

**March 31 - April 2, 2017**  
**Butzel Conference Center, Ortonville, Michigan**

Join Rabbi Jennifer Kaluzny &  
Julie Levy and their families!  
**Space is Limited.**

Mark your calendar now to join us for  
this exciting family event. We'll celebrate  
Shabbat, sing, play games and take part  
in a variety of fun-filled activities in an  
exciting camp environment.

Funded by the Dr. Robert B. Goldberg Fund

Questions? Please contact Julie Levy,  
ECC Director at 248-661-5750 or  
[julie@temple-israel.org](mailto:julie@temple-israel.org)

## WE TAKE PRIDE

**Ben Falik**, most recently the Detroit Director for Repair the World, has been chosen to lead North American Volunteering and Corporate Social Responsibility for Fiat Chrysler Automobiles. In January of 2017, Ben began his new position engaging 22,000 FCA volunteers. Ben departs Repair the World with an incredible set of accomplishments in Detroit -- and as a true champion of Repair's mission to make service a defining element of Jewish life. Mazel Tov Ben, and good luck in your new position at FCA!



# MITZVAH 613

## THE FULFILLMENT

### continues...



**Fulfill the 613th mitzvah  
and scribe a letter in the  
new Torah!**

**This is a beautifully memorable experience for  
families of all ages. Write your letter, fulfill a mitzvah  
and create a meaningful memory!**

### **2017 DATES**

**February 12 & 13**

**April 2 & 3**

**May 7 - Closing Ceremony & Scribing**



**Visit [www.temple-israel.org](http://www.temple-israel.org) for directions on how to sign up to scribe or  
information on volunteering for this amazing experience!**



# Bright Hearted

Laker Concert  
3.26.17 • 4 pm

Cantor Smolash takes us on a joyous and spiritual romp through Yiddish, Israeli, American and Chassidic songs, woven together by illuminating stories from our tradition.

Featuring a stellar band drawn from the cream of NYC musicians, including: Alicia Svigals, the world's leading klezmer fiddler and founder of the Grammy-winning Klezmatics, Tali Rubenstein, virtuoso jazz recorder player and composer on Grammy winning recordings, and many more.

For more information, contact Maya at 248-661-5700  
or [maya@temple-israel.org](mailto:maya@temple-israel.org).

The Laker concert is sponsored in loving memory of Sarah & Harry Laker.





## SHABBAT FOR TOTS TU B'SHEVAT



Join our Temple Israel clergy and early childhood educator, Jodie Kanagur, as we celebrate Shabbat and Tu B'Shevat with songs, snacks, prayer & crafts!

**Saturday,  
February 11, 2017**

**10:30 - 11:30 AM  
Temple Israel**

Please register online at [Temple-Israel.org/tu-bshevat](http://Temple-Israel.org/tu-bshevat)

For more information or to RSVP, contact Alicia Mendelson at [alicia@temple-israel.org](mailto:alicia@temple-israel.org) or 248-661-5700.



*Temple Israel Young Adult  
Programming is supported by  
Marilyn & Walter Wolpin.*

## SAVE THE DATE

## SHABBAT FOR TOTS PURIM STYLE

Wear your favorite costume and join our Temple Israel clergy and early childhood educator, Jodie Kanagur, as we celebrate Shabbat and Purim with songs, prayers, snacks and crafts!

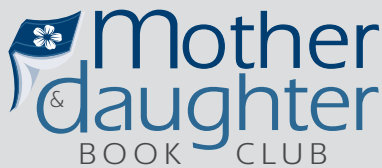
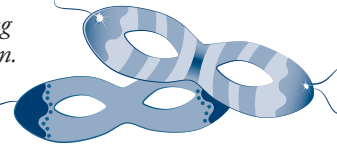
**Saturday, March 4, 2017**

**10:30 - 11:30 AM • Temple Israel**

Please register online at [Temple-Israel.org/PurimStyle](http://Temple-Israel.org/PurimStyle)

For more information or to RSVP, contact Alicia Mendelson at [alicia@temple-israel.org](mailto:alicia@temple-israel.org) or 248-661-5700.

*Temple Israel Young Adult Programming  
is supported by Marilyn & Walter Wolpin.*



**Thursday, April 27**

**Modern Girls**  
by Jennifer Brown

*See page 23 for details.*

## IN REVIEW - SHABBAT FOR TOTS: CHALLAH BAKING!

It was a true taste of Shabbat as over fifty tots and their loving families enjoyed braiding challahs at this November Shabbat for Tots! Rabbi Loss' super Shabbat service gave everyone that "Shabbat Feeling," just in time to taste the freshly baked challot!



## NEXTGen CONNECT

Internships. Jobs. Opportunity.

Working one-on-one, NEXTGen Connect offers guidance, advice and assistance for job applicants. Learn to produce polished, effective resumes, hone interviewing skills, set career goals, network, connect and find your fit in the business community. Whether you're looking for your first job, or trying to move back home, contact NEXTGen Connect to get your job search off to a strong start.

Students who are currently in college are eligible to register for the Internship Program (formerly the College Student Internship Program). The majority of internships in the current inventory are paid opportunities in a wide range of fields, from business to medicine, marketing to nonprofit work.

NEXTGen Connect is now actively seeking "NEXTGeners" looking for employment in the Metro Detroit area, as well as new companies and individuals offering internship opportunities.

We have available:

- Marketing specialists
- Account executives
- Finance positions, and many many more!


*For information, call Lauren Kepes at 248-233-4243 or [lkepes@jvsdet.org](mailto:lkepes@jvsdet.org), and visit [jewishdetroit.org/internships](http://jewishdetroit.org/internships)*

The Audrey & William Farber Endowment Fund  
for the Susan & Rabbi Harold Loss **early  
childhood  
center**  
**UPCOMING EVENTS**


**FEBRUARY**

- 2** | Mommy & Son Glow Bowling • 5 pm
- 7** | Kindergarten Open House • 7 pm
- 20** | Mid-Winter Break - NO SCHOOL  
Feb. 20 – 24, 2017
- 28** | Dr. Seuss on the Loose Dinner • 6 pm

**Dr. Seuss  
on the  
Loose**



**Tuesday, February 28**  
6 pm Dinner & Activities  
More details to come...



**GLOW BOWLING**

**Mommy & Son\*  
Evening**  
with dinner & bowling

**THURSDAY, FEBRUARY 2 • 5 PM**  
Langan's Nor-West Lanes (32905 Northwestern Hwy, Farmington Hills)  
\$36 for adults • kids are free! Ages appropriate for children 6 and under.  
Includes 2 games, shoes, pizza, pop, dessert + dancing!  
\*Any special person is welcome to attend in lieu of a parent, and everyone is welcome.  
**Register online at [Temple-Israel.org/MommySon2017](http://Temple-Israel.org/MommySon2017)**  
*Questions? Contact the ECC office at 248-661-5750.  
Supported by the Stark Family Fund and the Dorothy & Arnie Collens Family Event Fund.*

**KINDERGARTEN**

**OPEN HOUSE**

Fully accredited 5-day program for children 5 - 6 years old, Monday - Friday

Temple Israel Kindergarten will make a difference in the foundation of your child's future. Come see for yourself!

**FEBRUARY 7, 2017 • 7 PM AT TEMPLE ISRAEL**

*Every student enrolled in full day Kindergarten by March 11, 2017, will receive a \$2,000 Scholarship!*

*For more information contact the ECC office at 248-661-5750.*





Detroit's Only Jewish  
"Great Start to Quality"  
Four-Star Rated Facility

Early and Late Care  
Available Daily

Liberal Scholarships  
Available Through the  
Audrey & William Farber  
Endowment

# SUMMER PROGRAMS 2017

## CAMP SHEMESH

Our program offers three, 3-week, fun-filled summer sessions in a traditional Early Childhood Center environment. *Ages 2-5 years*

**Camp includes:**

- Morning friendship circle
- Weekly themes and special visitors
- Shabbat celebrations
- Music, science, soccer, art, water play, sports and outdoor games

### CHOOSE A SESSION

Session One ..... June 19 – July 7

Session Two ..... July 10 – July 28

Session Three ... July 31 – August 18

### CHOOSE A TIME

Half Day (M/W/F) ... 9:30 AM-12:30 PM

Half Day (T/TH) ..... 9:30 AM-12:30 PM

Half Day (M-F) ..... 9:30 AM-12:30 PM

Full Day (M/W/F) ... 9:30 AM-3 PM

Full Day (T/TH) ..... 9:30 AM-3 PM

Full Day (M-F) ..... 9:30 AM-3 PM

## SAFETY TOWN

**Safety Town is a program for children that teaches safety lessons about fire, pedestrians and traffic.**

**Dates TBD.** Safety Town is for children entering 4-year-old preschool & kindergarten.

## FAMILY FUN PROGRAMS

**7-week summer experiences perfectly geared for our youngest children and a parent or caregiver.**

### ITSY BITSY STORYTIME • June 20 – August 1

Tuesdays 10-10:30 AM *Ages 0-2 years*

An interactive story time with children. This program focuses on simple books, action movements, songs, finger play and a craft.

### BABY BUNCH • June 23 – August 4

Fridays 9:30-10:30 AM *Ages 8-13 months*

Come and play with your baby in a fun class that will offer weekly circle time, parachute play and a variety of sensory experiences that will encourage development through play.

### STEPPIN' INTO SUMMER • June 21 – August 2

Wednesdays 9:30-11 AM *Ages 14-36 months*

Join us outside for some fun in the sun with fun-filled activities. Dress in a bathing suit and plan on getting messy with us as we paint, splash and explore with our friends outside.

### TEMPLE TOTS • June 19 – August 4

Mon., Wed. and Fri. 9:30-11 AM *Ages 14-24 months*

Come and play with your toddler in a fun class that will offer weekly circle time, music, movement and story time. A variety of activity stations including many sensory experiences will encourage development through play. A place to come and be supportive with other families experiencing toddlerhood.

### CHALLAH TO HAMENTASHEN • June 22 – August 3

Thursdays 9:30-11 AM *Ages 18 months-4 years*

Join us for a Jewish cooking class for parents, grandparents, and their children. Prepare kid-friendly recipes. While our creations are baking enjoy singing, story time and a yummy snack.

*Funded by the David & Jean Brenner Memorial Fund.*

For more information, contact The Susan and Rabbi Harold Loss Early Childhood Center at Temple Israel  
5725 Walnut Lake Road, West Bloomfield • temple-israel.org • 248-661-5750



### FEBRUARY

**12** | JYFTI Goes to the Movies

### MARCH

**12** | Purim Carnival with special JYFTI activities

### APRIL

**29** | Saturday Night with Havdalah/Special Event

For all JYFTI Events contact Heather Bershas  
at [hbershas@temple-israel.org](mailto:hbershas@temple-israel.org) or  
248-661-5700 ext. 330.

### IN REVIEW:

## SOUTH OAKLAND SHELTER

In December JYFTI helped Temple Israel prepare for the South Oakland Shelter's guests. Our kids and parents made blankets, centerpieces, arts and craft kits, welcome cards for all our guests and sorted toiletries. It was such a wonderful way to spend a Sunday. Check your in box for all up coming JYFTI events!



# MYSTERY NIGHT

Join us as we go on a mystery adventure!

## FEBRUARY 11, 2017

Drop off and pick up  
at Temple Israel:

## 5-11 PM

Cost per person:

## \$30

Register online at [temple-israel.org/YFTImystery](http://temple-israel.org/YFTImystery)  
Questions? Contact Ethan at [ethan@temple-israel.org](mailto:ethan@temple-israel.org).



## CITY TRIP: NIAGARA FALLS

Explore, learn, eat, shop and connect with other Jewish teens!

### APRIL 14-16, 2017

Early Registration (Before 1/30): \$300  
Regular Registration: \$350

Deadline to register is **March 10**  
Register at [templeteens.org](http://templeteens.org)

**Space is limited. Sign up today!**

Questions? Please contact Judy Cocke  
at [jcocke@temple-israel.org](mailto:jcocke@temple-israel.org).

Note: You must have a passport valid for  
6 months after travel to join this trip.  
Please renew now if necessary.





**Temple Israel  
FAMILY CAMP**

**SHABBAT DINNER,  
INFORMATION SESSION  
& REUNION**

**FRIDAY,  
FEBRUARY 10, 2017**  
AT TEMPLE ISRAEL  
6 PM • DINNER  
7:30 PM • SHABBAT SERVICES

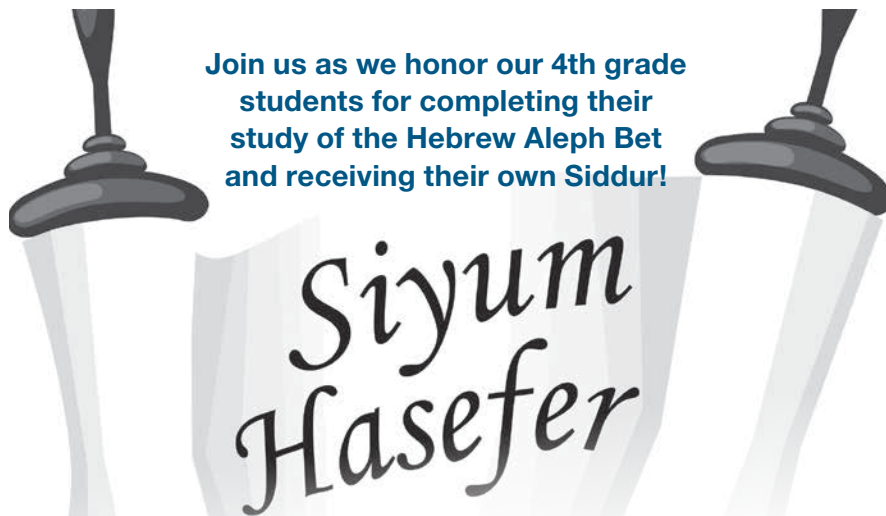
Calling all prospective and long-time Family Campers!

Don't get wait-listed!  
Join us to reserve your spot\* for Family Camp 2017!

Join our Temple Israel clergy and Family Camp Director, Helayne Shaw, for Shabbat Dinner and S'mores! Learn more about this one-of-a-kind experience, reunite with your camp friends, and be the first to sign up for Family Camp with Rabbi Marla Hornsten on May 19-21, 2017!

Dinner is \$12/adult and \$6/kids 4-12; kids under 4 are free.  
RSVP for dinner by February 6 at [temple-israel.org/FamCamp](http://temple-israel.org/FamCamp).

Questions? Contact Alicia Mendelson, Family Educator, at 248-661-5725 or [alicia@temple-israel.org](mailto:alicia@temple-israel.org).  
\*Family Camp Registration opens to public on February 13, 2017.



Join us as we honor our 4th grade students for completing their study of the Hebrew Aleph Bet and receiving their own Siddur!

**SUNDAY, MARCH 19, 2017**

**9:00 am:** 4th grade students and parents are invited for a bagel breakfast followed by a morning of celebration.

**11:10 am:** Grandparents, siblings, extended family and friends are encouraged to join for a special ceremony, marking this momentous learning milestone.

The festivities will conclude at 12:10 pm. Service appropriate attire is suggested.

Please register online at [Temple-Israel.org/SiyumHasefer2017](http://Temple-Israel.org/SiyumHasefer2017) by Monday, March 13th.

For more information, contact Alicia Mendelson, Family Education Coordinator at 248-661-5725 or [alicia@temple-israel.org](mailto:alicia@temple-israel.org).

**STAY CONNECTED  
TO TEMPLE!**

DOWNLOAD TEMPLE ISRAEL'S NEW  
FAMILY EDUCATION APP

**iConnect@ti**



ANDROID APP ON  

Google play

Available on the  

App Store

**PERFECT FOR  
PRE-K - 6TH GRADE  
FAMILIES**

ENGAGING ACTIVITIES

WIN PRIZES

EXPLORE JEWISH HOLIDAYS,  
VALUES & TRADITIONS

Temple Israel is thrilled to launch this exciting family learning initiative! Interact with our clergy, stay connected to Temple Israel events and opportunities, and find links to Jewish websites and resources. Just download the app and create a profile to get started. Kids earn prizes (and parents earn tuition discounts!) by learning about Jewish holidays together and completing age-appropriate activities.

Quick, easy, and always at your fingertips, iConnect is perfect for families just like yours!

For more information, contact Alicia Mendelson at [alicia@temple-israel.org](mailto:alicia@temple-israel.org) or 248-661-5700.





## Adults Seeking Knowledge

### SPEAKER SERIES AT TEMPLE ISRAEL

**Our ASK (Adults Seeking Knowledge) program is a monthly luncheon series featuring a wonderful line-up of guest speakers.**

#### RABBI DAN HORWITZ



**Monday, February 20, 2017  
12-1:30 PM**

**Rabbi Dan Horwitz** is the Founding Director of *The Well*. He will speak about this new outreach initiative, designed to meet the needs of young adults, and to fully engage them in the Jewish community.

**Cost: \$7 members with reservations,  
\$10 non-members and walk-ins, includes lunch.**

**Monday, February 27, 2017  
12-1:30 PM**

Our guest is **Rabbi Elli Fischer** from Modiin, Israel. He will present, "Why I Defy: The Story of an Orthodox Rabbi in Israel Fighting For Civil Rights."

**Cost: \$7 members with reservations,  
\$10 non-members and walk-ins, includes lunch.**

#### RABBI ELLI FISCHER



#### PROFESSOR JEFFREY VEIDLINGER



**Monday, March 20, 2017  
12-1:30 PM**

**Jeffrey Veidlinger** will present, "Marc Chagall and the Artists of the Jewish Theater." Our speaker serves as Professor of History and Judaic Studies, and Director of the Frankel Center for Judaic Studies at the University of Michigan.

**Cost: \$7 members with reservations,  
\$10 non-members and walk-ins, includes lunch.**

*This event is sponsored in partnership with the  
Cohn-Haddow Center for Judaic Studies, Wayne State University.*

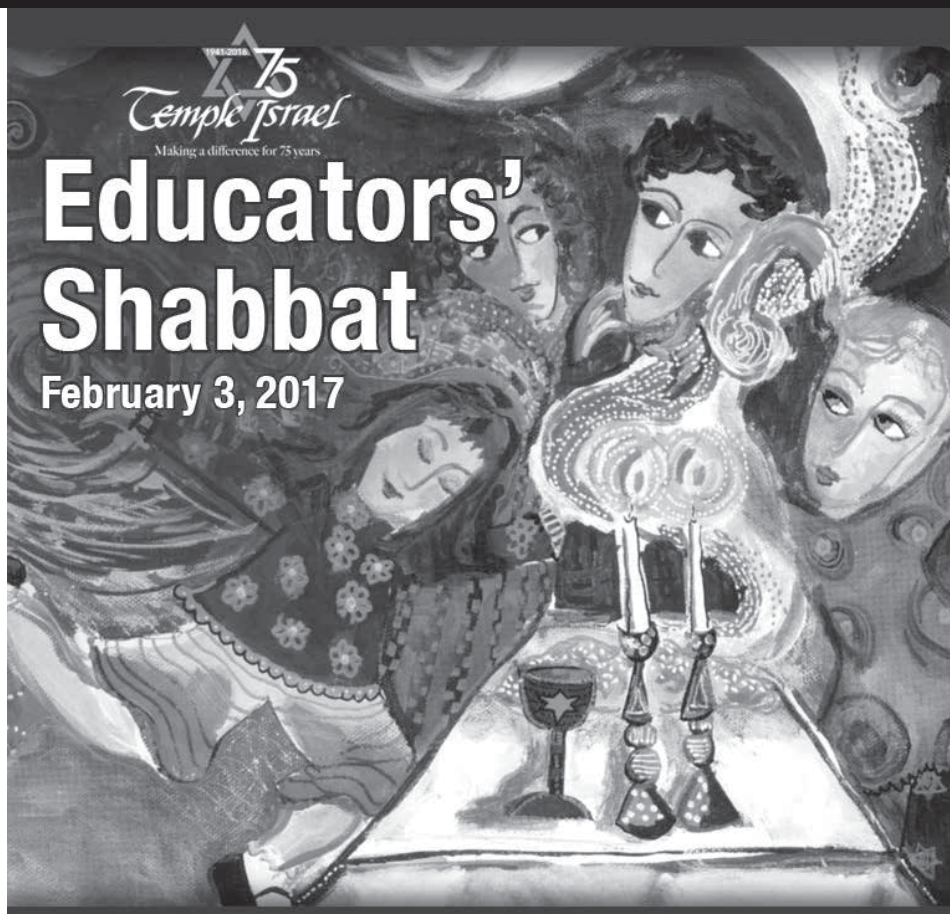
**Register online at [Temple-Israel.org/Event\\_Registration](http://Temple-Israel.org/Event_Registration)**

**Questions? Contact the Education Office at 248-661-5725 or [lkaplan@temple-israel.org](mailto:lkaplan@temple-israel.org).**

*Sponsored by the Debbie & Al Iwrey Senior Programming Fund.*



FOR MORE INFORMATION ON ANY ADULT EDUCATION CLASSES OR TO RSVP,  
CONTACT THE EDUCATION OFFICE AT 248-661-5725 OR LKAPLAN@TEMPLE-ISRAEL.ORG.



# Educators' Shabbat

February 3, 2017

Join us at 7:30 pm for our annual celebration of  
**Jewish teaching and learning!**

Honoring our teachers for their years of service. Teacher awards will be presented at services, followed by a sweet oneg.

## TORAH AND BIBLE STUDY

**TORAH LINE BY LINE . . .**  
**TUESDAYS • 12-1 PM**

Join us for a line-by-line study of Torah.

Using commentary, sharing our own insights, and looking at various translations, we work our way through this amazing and inspiring text.

*Taught by Rabbi Arianna Gordon.*

**SHABBAT TISCH**  
**SATURDAYS • 9:30-10:30 AM**

Join us for a Shabbat morning of insights and investigation into the texts of our Bible.

**SUNDAY MORNING TORAH**  
**STUDY • 10:30-11:30 AM**

Each week we will explore the weekly Torah portion and discover the wonders of its teachings. *Taught by Jacqueline Fox.*

## SING YOUR PRAISE:

### *A Guide to Rekindling Faith*

**7 - 9 pm • Temple Israel**

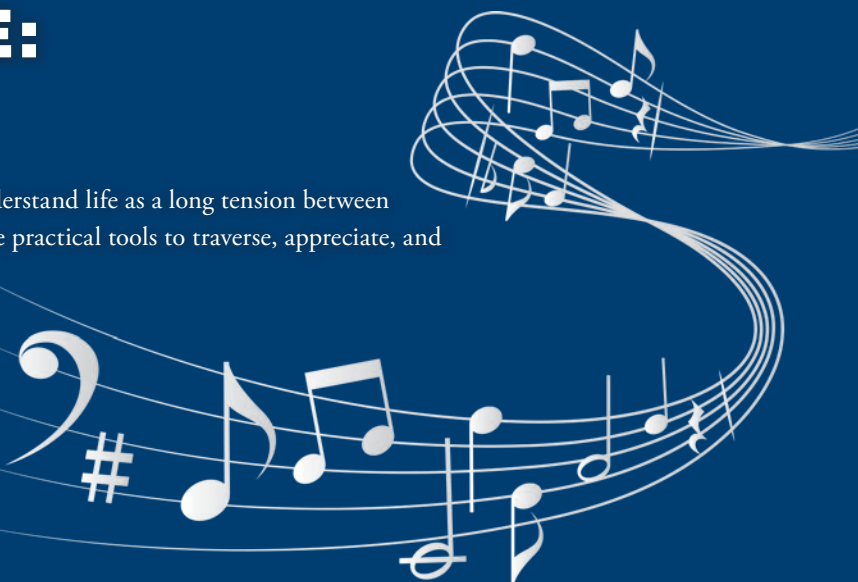
This series of 4 workshops is intended to help people better understand life as a long tension between defeat and victory, between despair and hope, and provide some practical tools to traverse, appreciate, and praise the blessing that is life. *Taught by Cantor Michaels*

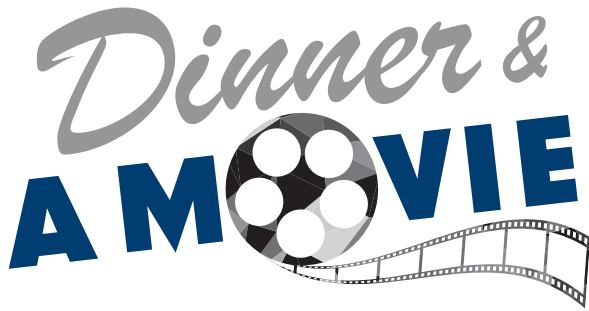
**Tuesday, March 14<sup>th</sup>** – Listening for the Pulse of Praise through the Sacred Circle of the Drum

**Thursday, April 20<sup>th</sup>** – A Symphony of Praise: The Psalms of King David

**Tuesday, May 16<sup>th</sup>** – The Power of Praise in Dark Times

**Thursday, June 8<sup>th</sup>** – Finding Sacredness in Secular Song





**Thursdays • 5 pm**

The Weinberg Family Library and Sisterhood of Temple Israel are excited to present this film discussion series. Join our clergy for dinner, movie and discussion on the following dates:

**February 2**  
***The Believer***

facilitated by Rabbi Josh Bennett

**February 23**  
***Focus***

facilitated by Cantor Neil Michaels

**March 9**  
***Gentleman's Agreement***  
facilitator TBD

**March 23**  
***School Ties***

facilitated by Rabbi Jennifer Lader

The movies will be available to check out from the Temple Israel Libraries prior to each session for viewing at home or you are welcome to attend a group showing at 5 pm on each date. Dinner and discussion will begin at approximately 6:45 pm.

**\$14 per session.**

Reservations are required no later than the Monday before each date. Contact Lauren Marcus Johnson at 248-661-5700 or e-mail [ljohnson@temple-israel.org](mailto:ljohnson@temple-israel.org).

*Sponsored by the Weinberg Family Library and the Temple Israel Sisterhood.*



Join Librarian Lauren Marcus Johnson and 2nd grade Teacher, Anita Hack, in the Hodari Family Children's Library for stories, crafts, games and fun!

All 1st-3rd grade book lovers are invited to participate. If you love pizza, books and spending time in the Library-then you'll love this program!

**February 5 • March 19**

We will meet after Sunday School, from **12 - 2 PM** in the Hodari Family Children's Library

A pizza lunch will be served (\$5/person payable at the meeting).

Reservations are required by the Thursday before each date.

Contact Lauren Marcus Johnson at [ljohnson@temple-israel.org](mailto:ljohnson@temple-israel.org) or 248-661-5700.

*With support from the Newman Family Fund for Library Programs & Resources*

Dear Kindergarteners:

As an introduction to our Children's Book Club, please join us for a special session of **Pizza & Pages** for Kindergarteners ONLY in the Media Center following Religious School on:

**Sunday, March 26**  
**12 - 2 PM**

***Reservations are required.***

To RSVP contact Lauren Marcus Johnson at [ljohnson@temple-israel.org](mailto:ljohnson@temple-israel.org) or 248-661-5700.



TEMPLE ISRAEL YOUNG ADULTS PROGRAMMING AND TEMPLE ISRAEL LIBRARIES & MEDIA CENTER INVITE YOU TO JOIN US FOR OUR NEXT

# Mother & daughter BOOK CLUB

Young adult women (ages 20s-40s) and their mothers (aunts, grandmothers, sisters, and friends are welcome too!) will enjoy an evening of delicious food, great wine and inspiring discussion.

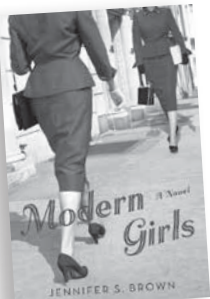
**Thursday, April 27, 2017 • 6:30 pm**

**Modern Girls by Jennifer Brown**

In 1935, Dottie Krasinsky is the epitome of the modern girl and her immigrant mother, Rose, is itching to return to the social activism she embraced as a young woman. As mother and daughter wrestle with unthinkable choices, they are forced to confront their beliefs, the changing world, and the fact that their lives will never again be the same.

*\$18/person, includes dinner, wine and dessert.*

RSVP to Randi Simko by Thursday, April 20, [randi@temple-israel.org](mailto:randi@temple-israel.org) or 248-661-5700.



## SAVE THE DATES:

**Tuesday, March 7 • 7 pm**

Author/Speaker **Dov Waxman** will speak on his book *Trouble in the Tribe: The American Jewish Conflict Over Israel*.

Drawing on a wealth of in-depth interviews with American Jewish leaders and activists, Waxman shows why Israel has become such a divisive issue among American Jews. He delves into the American Jewish debate about Israel, examining the impact that the conflict over Israel is having on Jewish communities, national Jewish organizations, and on the pro-Israel lobby.

RSVP to the Education Office at 248-661-5725 or [lkaplan@temple-israel.org](mailto:lkaplan@temple-israel.org).



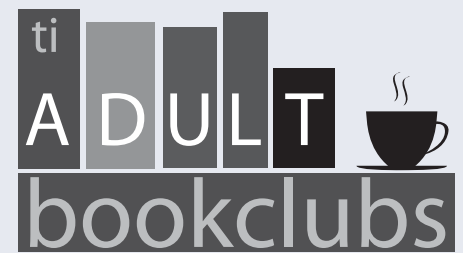
**Tuesday, March 21 • 7 pm**

**Accidental Activists - Documentary**

Jayne Rowse and April DeBoer were simply looking to overturn the law that would allow them to adopt their children. But on the recommendation of U.S. District Judge Bernard Friedman, the Hazel Park couple's lawyers launched a frontal assault on the legal barrier that prevents them from jointly adopting—Michigan's constitutional amendment that prohibits same-sex couples from marrying.

Join us to view the documentary, then hear from Free Press photographer Mandi Wright and U.S. District Judge Bernard Friedman in a Q & A following the film.

RSVP to the Education Office at 248-661-5725 or [lkaplan@temple-israel.org](mailto:lkaplan@temple-israel.org).



Join the Temple Israel Adult Book Clubs! Our professional facilitators and diverse selections are certain to expand your mind, stimulate your intellect, and make for fun and enjoyable discussions. The 2016-2017 season meets on Monday mornings at 9:45 am and Tuesday evenings at 6:30 pm at Temple Israel.

*All are welcome! Registration is required. For more information, contact Lauren Marcus Johnson at 248-661-5700 or [ljohnson@temple-israel.org](mailto:ljohnson@temple-israel.org).*

Join us on **Monday, February**

**13 at 9:45 am** for the Monday Morning Book Club or on

**Tuesday, February 14 at 6:30**

**pm** for the Dinner & A Book

series to discuss the book,

*Esther: A Novel* by Rebecca

Kanner. The discussions

will be facilitated by Dalia

Shaham.



Participants are encouraged to read the selected book prior to the meeting. Copies of the books are available from the Weinberg Family Library and from local public libraries and booksellers.

## SAVE THE DATES:

**March 13/14** – *The Beauty Queen of Jerusalem* by Sarit Yishai-Levi, facilitated by Rabbi Jennifer Lader

**April 3/4** – *Norwegian by Night* by Derek B. Miller, facilitated by Marilyn Gans Schelberg, PhD.

**May 15/16** – *The Lie* by Hesh Kestin, facilitated by Dalia Shaham

**June 19/20** – *An Undisturbed Peace* by Mary Glickman, facilitated by Edie Broida

Support Temple Israel by ordering your book through the AmazonSmile program.



# iRead

## REMEMBER TO BE A JEWISH READING STAR!!



1<sup>st</sup>-3<sup>rd</sup> graders read Jewish books from their own home library and/or books from the Hodari Family Children's Library. Children can read the books with an adult (parent, grandparent, or other book lover) and return the forms to their teacher by **Sunday,**

**April 23, 2017.** All forms are available in the Hodari Family Children's Library or from your Religious School teacher, and can be downloaded from the Temple Israel website (go to the Media Center & Libraries section). If you have any questions about the Religious School reading programs, contact your teacher or Lauren Marcus Johnson at 248-661-5700 or [ljohnson@temple-israel.org](mailto:ljohnson@temple-israel.org). Happy Reading!

## CHECK IT OUT

For books to keep you warm this winter, check out some of the new fiction in the Weinberg Family Library.

***Among the Living* by Jonathan Rabb** – A moving novel about a Holocaust survivor's unconventional journey back to a new normal in 1940s Savannah, Georgia

***Broken Angels* by Gemma Liviero** – A Nazi doctor. A Jewish rebel. A little girl. Each one will fight for freedom—or die trying. While Hitler ransacks Europe in pursuit of a pure German race, the lives of three broken souls—thrown together by chance—intertwine. Only love and sacrifice might make them whole again.

***The Dinner Party* by Brenda Janowitz** – This Passover Seder is not just any Passover Seder. Yes, there will be a quick service and then a festive meal afterwards, but this night is different from all other nights. This will be the night the Golds of Greenwich meet the Rothschilds of New York City.

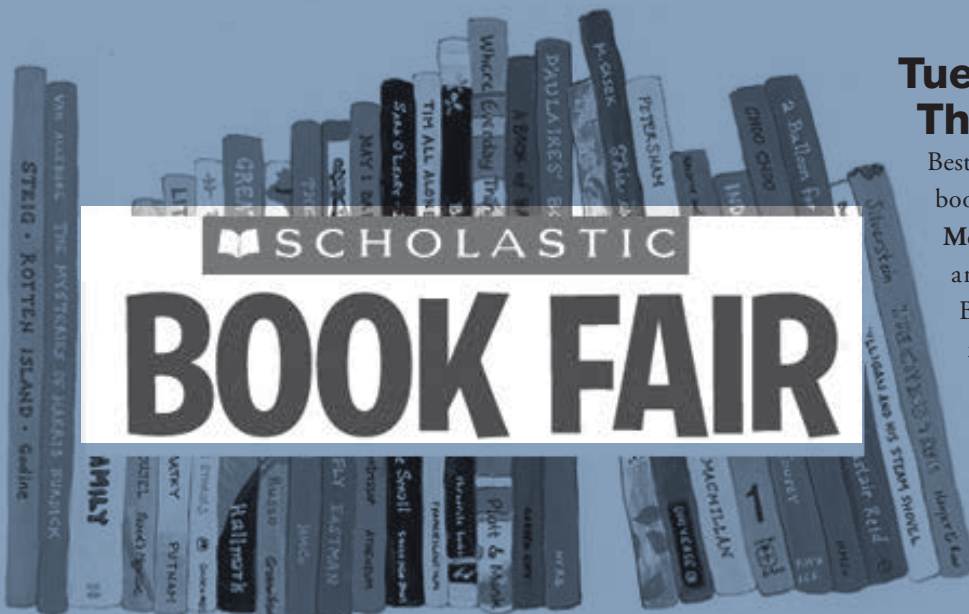
***The Extra* by A.B. Yehoshua** – From Israel's highly acclaimed author, a novel about a musician who returns home and finds the rhythm of her life interrupted and forever changed.

***Faithful* by Alice Hoffman** – From the New York Times bestselling author of *The Marriage of Opposites* and *The Dovekeepers* comes a soul-searching story about a young woman struggling to redefine herself and the power of love, family, and fate.

***The German Girl* by Armando Lucas Correa** – Sweeping from Berlin at the brink of the Second World War to Cuba on the cusp of revolution, to New York in the wake of September 11, this novel takes you on a breathtaking journey before reaching its deeply moving conclusion in the tumult of present-day Havana.

***Girl in the Blue Coat* by Monica Hesse** – Amsterdam, 1943. Hanneke spends her days procuring and delivering sought-after black market goods to paying customers, her nights hiding the true nature of her work from her concerned parents, and every waking moment mourning her boyfriend, who was killed on the Dutch front lines when the Germans invaded. She likes to think of her illegal work as a small act of rebellion.

# MARCH IS READING MONTH



## Tuesday, February 28 – Thursday, March 2

Bestsellers, award-winning books, chapter books, picture books, and books especially for **March is Reading Month**, as well as hundreds of other items for children and families will be for sale. Proceeds from the Book Fair will be used to purchase new classroom materials for our Susan and Rabbi Harold Loss Early Childhood Center and to support author visits! Contact Lauren Marcus Johnson at 248-661-5700 or [lauren@temple-israel.org](mailto:lauren@temple-israel.org) if you are available to volunteer.





## PARENT SUPPORT GROUP

THURSDAY, FEB 9, 23 • 7-8:30 PM

Dr. Melissa Farrell, Licensed Clinical Psychologist and Roz Keith, parent advocate for the transgender community, will facilitate this ongoing group intended to give parents of transgender youth a place to learn, share, and better understand what it means to raise a transgender child. This group offers a safe and warm environment to share and discover how to travel this journey with your child. Join us on the 2nd & 4th Thursday of every month.

**This support group is open to the community and sponsored by The Caring Community.**

*For more information or to RSVP, contact Kate Boman at 248-661-5700 or [kate@temple-israel.org](mailto:kate@temple-israel.org).*

## TEENS AND YOUNG ADULTS

THURSDAY, FEB 9 • 7-8:30 PM

Transgender teens and young adults are welcome to join us for an informal, facilitated support session in a safe and warm environment. Please come and be yourself, talk about issues and meet your peers.

Please join **Kari Provizer, LMSW, ACSW** and **Jean Nemenzik, LMSW** as she facilitates and supports you through this transition.

We will be meeting at Temple Israel on **Thursday, February 9th from 7 - 8:30 PM**. A pizza dinner will be provided!

*For more information or to RSVP for dinner contact Kate Boman at 248-661-5700 or [kate@temple-israel.org](mailto:kate@temple-israel.org).*

*This event is sponsored by The Caring Community.*



## DROP-IN BEREAVEMENT SUPPORT GROUP

*Diane Levy-Rubinstein, LMSW*  
Facilitator

**February 9 & 23**

**7 - 8:30 pm • Temple Israel**

**Mission Statement:** After the death of a loved one, there are so many thoughts, feelings and experiences to deal with. Accepting the death of a loved one requires one to fully experience their grief. Sharing one's grief within a group setting enables griever to recognize the commonality of their experiences while also defining the uniqueness of their grief.

- Group led by a trained professional who offers confidentiality, warmth and a place to come share.
- Focuses on helping those dealing with the loss of a loved one, to remember and move on.
- Provides support in a healing environment.

*All sessions are open to the community and are free of charge. Please call Temple to verify dates as they do change.*

**REGISTRATION IS NOT REQUIRED.**

*For information please contact: Kate Boman at 248-661-5700 or [kate@temple-israel.org](mailto:kate@temple-israel.org).*

## MS PATH SUPPORT GROUP

**Thursdays • 7 - 9 pm**

The MS PATH (Positive Attitude Toward Health) meets on the 2nd and 4th Thursday of every month from 7 - 9 pm in Classroom 11. A support group takes place on the 2nd Thursday and there is generally a speaker present on the 4th Thursday. This group is designed for those with MS as well as family members and/or caregivers.

**February 9: Support Group**  
**February 23: Potluck**

*Contact Ronna Heller at (Home) 248-737-2328, (Cell) 248-330-4632 or [rhlbox@me.com](mailto:rhlbox@me.com) for more details on any MS Path Program.*

# Together We Stand

*Your Journey  
Through Cancer*

Join facilitator Jodie Jacobs, LMSW, for inspiration, support and encouragement on the last Thursday of each month.

**Join us at Temple Israel  
February 23<sup>rd</sup> • 11 AM**

This is a drop-in group for those 18 years and older that:

- Have been recently diagnosed
- Are in treatment
- Have just completed treatment

**Registration is required.**

Please contact the Robert Sosnick Family Life Center at 248-661-5700 or [kate@temple-israel.org](mailto:kate@temple-israel.org).



What Every Couple Should Know  
Before and After Saying  
**"I DO"**

**Session dates and  
times to be announced.  
Sessions are held at  
Temple Israel.**

## IN REVIEW: NO TEMPLE FAMILY WITHOUT A CHANUKAH - WRAPPING PARTY

Thank you so much to our wonderful congregants for lending their creative talents and donating their time to wrap presents for the Temple Israel families touched by the No Temple Family Without A Chanukah program. Without all of our dedicated volunteers this program would not have been possible. Through their help and generosity, we made Chanukah for 35 Temple Families. We had a fabulous day together! Supported by The Barbara and Lawrence Millman Chanukah Fund and The Jackie Unatin Memorial Chanukah Fund.



## CAREGIVER SUPPORT GROUP

*~The balance between love, logic and laughter~  
When helping you is hurting me...*

Taking care of someone else as well as taking care of you?

**Tuesdays • February 7<sup>th</sup>, 14<sup>th</sup> 21<sup>st</sup> & 28<sup>th</sup> • 10 - 11:30 am**

Give yourself respite – join facilitator Janice G. Tracht, LMSW, ACSW, BCD in a supportive environment. Sharing one's experience within a group setting enables caregivers to recognize the commonality of their experience while also defining the uniqueness of their situation.

The group is led by a trained professional who offers confidentiality, warmth and a place to come and share.

*Space is limited. Registration is REQUIRED. RSVP to Kate in the Robert Sosnick Family Life Center at 248-661-5700 or [kate@temple-israel.org](mailto:kate@temple-israel.org)*



## THANK YOU LETTERS

Without the Po Temple family without a Hanukkah program this would not have been a possibility. I truly thank you from the bottom of my heart and have every intention to pay it forward when I'm able → So much for being my 7 year

Thank you so much for being there for me and my 7 year old during this most difficult life transition.

From our family to yours we are sending you all a huge heart felt thank you! With your love and support you have made our childrens hanukkah one to remember. We are truly, deeply thankful for our Temple family. Again thank you all so very much for your love and help in our time of need. XOXO

Thank you  
for the  
gifts.


Temple  
angels

A collage of the words "THANK YOU" and "YOUTH" in various fonts and sizes, with one instance of "THANK YOU" in bold black text.

Dear Temple Israel Sponsors,  
Thank you so much  
for the generous Hanukkah  
gifts. We were embarrassed  
to ask for a much-  
needed carseat and Boovie  
ball for our son's therapy.  
Yet, the amount of  
gifts, PTs, jacket were  
beyond overwhelming.  
We will have a very  
Special Hanukkah  
thanks to you

Generosity, care,  
Love and warmth.  
We hope Someday  
to return this  
Nitzvah to a  
family in need.  
We thank you  
and appreciate you  
So very much!  
Happy Hanukkah to  
you and yours!  
Love

It was such a treat to be able to go out to dinner with our gift cards to Champs- we don't get to do that often and my family loved it. It ~~over~~whelms me that our Temple Family made this all possible. I wish my family was not in this position and I am forever grateful for our Temple Angels. Thanks again, From a very appreciable family

 *celebrate!*

i ♥ Hanukkah!

There are no words to  
express how thankful I  
am for the incredibly generous  
gifts my children and I  
loved each and every one  
of them. They helped us  
so much! It was so  
wonderful!

Wonderful watching the excitement on my daughter's faces each time they opened a gift. We are so lucky to be part of this caring community. Happy, Healthy New Year! Thank you so much!!

Wishing you big smiles  
and happy moments to last  
all Hanukkah long.

Dear Angels,  
Thank you so much for your generosity and kindness. We  
wouldn't be able to give our kids the holiday they deserve  
if it weren't for you.  
We are forever grateful for our Temple family.

## SAVE THE DATE

Senior  
RESOURCE  
EXPO

**Thursday, May 18, 2017**  
**2 - 4 pm • Temple Israel**

Join us for a special day for Seniors, their families and caregivers. This event will be composed of resources focusing on senior health and well being. Community organizations will be available to answer questions about caring for aging parents and loved ones, senior nutrition, housing and much more. Don't miss this chance to connect with local services and opportunities in our community.

*Supported by the Dr. Dennis J. and Milly Kovan Memorial Fund.*

**BE A SENIOR RESOURCE EXPO PROVIDER...**

Temple Members we are offering this to you FIRST! Secure your spot before we open to the general public.

**Limited spaces available – do not miss this opportunity to connect with our metro detroit community!**

*For more information, call Kari Provizer at 248-661-5700.*

## The Alicia Joy Techner Memorial Parenting Series

**Thursday, February 9**  
**7 pm at Temple Israel**

**Julie Tarney**

***My Son Wears Heels:***

***One Mom's Journey from Clueless to Kickass***

**Register online at [temple-israel.org/MySonWearsHeels](http://temple-israel.org/MySonWearsHeels)**

This event is open to the community at no cost, however reservations are requested.

**See back cover for a full description of this event and for registration information.**



IN CONJUNCTION WITH THE CARING COMMUNITY PRESENTS:  
**CELEBRATING OUR 20TH YEAR**

TEMPLE ISRAEL'S  
**SENIOR ADULT PROGRAM**  
 2017 SEASON SCHEDULE

**THURSDAY APRIL 20, 2017 • 1:30 PM**  
**Maria Cimorelli & Mark Vondrak**

**THURSDAY MAY 18, 2017 • 1 PM**  
**Performer TBD**

**THURSDAY JUNE 15, 2017 • 1:30 PM**  
**Frank Sternett (Barry Manilow Impersonator)**

**THURSDAY JULY 20, 2017 • 1:30 PM**  
**Matthew Ball "The Boogie Woogie Kid"**

**THURSDAY AUGUST 17, 2017 • 1:30 PM**  
**Arbor Opera Theater**

**L'SHANA TOVA**  
**(No Performance in September due to Rosh Hashana)**

**THURSDAY OCTOBER 19, 2017 • 1:30 PM**  
**Walled Lake Central Choral Group**

Partially funded by David Arthur Stulberg Memorial Fund, Harry & Phyllis Kellman Memorial Fund, the Bertha & Harry Kifferstein Senior Adult Programming Fund and The Debbie & Al Iwrey Senior Programming Fund.

All programs are subject to change.

Temple Israel  
 Making a difference.

5725 Walnut Lake Road  
 West Bloomfield, Michigan 48323  
 248-661-5700

The Robert Sosnick  
 Family Life Center



METRO DETROIT

**SHARE**

**Tuesday, February 7 • 6 pm at Temple Israel**

Join facilitator and Temple Israel member Melissa Mayerson and Rabbi Jennifer Kaluzny at this special support group for young parents who have experienced miscarriage, stillbirth or infant loss.

For more information contact Melissa Mayerson  
 at [melissamayerson\\_share@yahoo.com](mailto:melissamayerson_share@yahoo.com) or,  
 Rabbi Jennifer Kaluzny at [jkaluzny@temple-israel.org](mailto:jkaluzny@temple-israel.org)

Supported by the Aviva Pearl Herman Memorial  
 SHARE Fund.





## IN REVIEW: URJ CAMP GEORGE REUNION & SHABBAT DINNER



# GOTTA GET TO GEORGE!

Registration is open for Summer 2017. Join our Michigan campers in the one-of-a-kind life changing experience that is sleep away camp.

Through informal Jewish education, the arts, a state-of-the-art waterfront program, an intense ropes challenge course, and great athletic facilities, Camp George offers campers an experience of a lifetime.

For more information contact Kari Provizer at 248-661-5700.



## CAMP GEORGE + EXCHANGE RATE= AMAZING SAVINGS!

### Full Session:

\$4580 Canadian

\$3440 American

*A savings\* of over \$1100!*

### 17 day Nitzotzot/Lehavot - Grades 2-5:

\$3260 Canadian

\$2448 American

*A savings\* of more than \$800!*

\*Savings vary depending on the current exchange rate.

**Register Now!**

**George.URJCamps.org**

**URJ Camp George 416-638-2635**





## Sisterhood

at Temple Israel

### Calendar of Events

2016 - 2017\*

#### February

- 1 | General Board Meeting @ Temple 10 am
- 2 | Dinner & A Movie
- 13 | Lunch with "The Love Doctor"
- 15 | Nursing Home Bingo
- 23 | Dinner & A Movie

#### March

- 1 | General Board Meeting @ Temple 10 am
- 9 | Dinner & A Movie
- 15 | Nursing Home Bingo
- 16 | Night out at the JET
- 23 | Dinner & A Movie
- 28 | Women's Freedom Seder

#### April

- 5 | General Board Meeting @ Temple 10 am
- 19 | Nursing Home Bingo
- 24 | Election Luncheon and Program
- 30 | Spring Boutiques

#### May

- 10 | General Board Meeting @ Temple 10 am  
(Old Board/New Board)
- 17 | Nursing Home Bingo
- 18 | Installation Dinner
- 23 | Preview Night for House Tour

#### June

- 1 | House Tour  
(Note: Moved to Thursday due to Shavuot)
- 5-7 | Sisterhood Retreat

*Additional programs currently being added.*

*Follow us on Facebook or at*

*Temple-Israel.org/Sisterhood for the latest information!*

*\*Please note all dates are tentative and subject to change.*

### SHORT ON TIME... VISIT OUR WEBPAGE FOR:

- Membership registration
- Send a Sisterhood tribute
- Sign up for programs & fundraisers
- All the latest Sisterhood information

[www.Temple-Israel.org/Sisterhood](http://www.Temple-Israel.org/Sisterhood)

## Secrets to HAPPY RELATIONSHIPS

JOIN SISTERHOOD FOR A  
LUNCHEON AND SPEAKER EVENT

FEBRUARY 13 ♥ 12 PM

WITH SPEAKER TERRI ORBUCH,  
"THE LOVE DOCTOR"



In this engaging and fun presentation, Dr. Terri Orbuch (aka The Love Doctor) shares her secrets to happy relationships based on over three decades of experience as a nationally recognized relationship expert. You'll learn about what works and what doesn't for happy enduring relationships (of all kinds), using simple science-based strategies.

When you're in happy healthy relationships, you're better able to handle stress, more likely to be physically active and sleep better.

Cost: \$20/Members • \$28/Guests

Register online by February 6th at [Temple-Israel.org/Sisterhood](http://Temple-Israel.org/Sisterhood)  
or mail checks payable to Temple Israel Sisterhood to Julie Stern  
33000 Covington Club Drive, Unit 77, Farmington Hills, MI 48334

Questions? Contact Caryn Devaney at [carynw17@aol.com](mailto:carynw17@aol.com)

## SAVE THE DATES:

### Women's Freedom Seder

Tuesday, March 28 • 6 pm

Join us for our second annual thought-provoking celebration of our journey towards freedom, learning and social justice. We will be joined by women of other faiths to enhance our experience and share our common values in our faith traditions. Watch your email for more information. You won't want to miss this special Seder.

### Spring Boutiques

Sunday, April 30 • 9:30 am - 3:30 pm

For your shopping pleasure we will have an outstanding selection of boutiques & delicious snacks all day in our Cafe. Thank you in advance for your generous support.



**House Tour**  
Thursday, June 1





Join Sisterhood for a Night Out at the  
Pulitzer Prize-winning play

## DISGRACED

Meet with the Director for an enlightening  
discussion following the performance.

**THURSDAY, MARCH 16**  
**7:30 PM • THE JET**

6600 W Maple Rd, West Bloomfield

**\$35 Sisterhood Members | \$40 Guests**  
Limited tickets available

For more information and to RSVP:  
Temple-Israel.org/Sisterhood

Questions? Contact Caryn Devaney at carynw17@aol.com

## A Year of Flowers \$35!

### 2017 Flower of the Month Fundraiser

*To benefit Temple Israel Sisterhood • A Must Have for all Flower Lovers!*

You will help brighten someone's day by participating in this Year of Flowers fundraiser! For only \$35 (one-time charge), you will be able to pick up a fresh-cut bouquet or potted plant once a month for a year! Once you place your order via one of the methods below, you will be mailed a Certificate that will allow you to go to any English Gardens location and pick up your flowers. Here's what you'll get:

<b>January</b> - Tropical Foliage Plant #4.0	<b>July</b> - Bromeliad #4.0
<b>February</b> - Fresh-cut Alstromeria Bunch	<b>August</b> - Sunflower Bunch
<b>March</b> - Tulip Bunch	<b>September</b> - Gladiola Bunch
<b>April</b> - Mixed Floral Bouquet \$7.99 Value	<b>October</b> - Kalanchoe or Calandiva Plant #4.5
<b>May</b> - Succulent Plant #4.0	<b>November</b> - Chrysanthemum Bunch \$6.99 Value
<b>June</b> - Mini Rose Plant #4.0	<b>December</b> - Poinsettia #4.5 or Cyclamen #4.0

Mail your orders to Debbie Levin, 25031 Woodvale Drive South, Southfield, MI 48034 with \$35.00 payment (Checks made payable to Temple Israel Sisterhood) Your order form and card will be mailed directly to your home. Questions? Please call Debbie Levin at 248-514-9769.

Name \_\_\_\_\_  
Address \_\_\_\_\_ City \_\_\_\_\_ Zip \_\_\_\_\_  
Phone \_\_\_\_\_ Email \_\_\_\_\_  
How Many \_\_\_\_\_ X \$35= \_\_\_\_\_ When do you want it to start \_\_\_\_\_



### YOUR SISTERHOOD AT WORK...

*Providing Monthly  
Bingo Games for Nursing  
Home Residents!*

By simply paying your Dues, attending  
an Event or visiting our Gift Shop,  
You help make this possible!

**Stronger Together!**

## Sisterhood Gift Shop

One-Stop Shopping!



- New merchandise arriving daily to enhance and enrich your holidays and special celebrations - extensive selection of tallitot, kiddush cups, mezuzahs and more.
- Our cash-back policy makes gift giving easy.
- We accept all major credit cards.
- Please do not hesitate to call with any questions or requests for special appointments.

### February Special 30% OFF TZEDAKAH BOXES

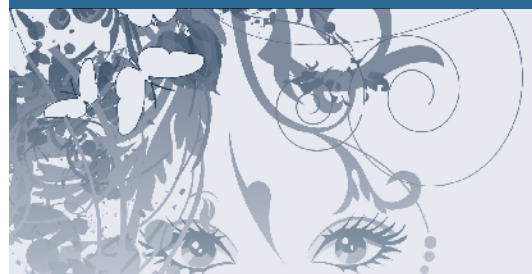


*\*Must be over  
\$25 and in stock;  
excludes special  
orders.*

Gift Shop hours M/T/TH 2 - 6 pm & Sunday  
9:30 am - 12 pm (Religious School Days)

You may reach: Lisa at 248-563-3100,  
Denise at 248-855-4842 or  
Mary Lou at 248-875-1595

## SAVE THE DATE:



### Sisterhood Retreat EAT, PRAY, LEARN: BRIDGES EDITION

June 5 - 7, 2017

Details to follow!



## Upcoming Events

### February

- 11 | Intercongregational Men's Club Dinner - Temple Beth El

### March

- 2 | Board Meeting & Dinner  
5 | Shusan Hold'em Tournament/Raffle  
12 | Purim Blood Drive  
19 | Pistons vs. Suns

## USHER CORPS

Come to Temple Israel on Shabbat, holidays or for our other programs and see these smiling faces.



### HELP WANTED: USHERS

#### Temple Israel Brotherhood volunteer opportunity:

**Do you have time to give on a Saturday morning?**

We are looking for some fresh smiling faces to greet our congregants and guests. We also need ushers for other services and special events – whatever works for you!

For more information, contact Art Dubin at 248-737-8897 or [countryart@comcast.net](mailto:countryart@comcast.net).



## PURIM BLOOD DRIVE: SUNDAY, MARCH 12 • 9 AM

To set up an appointment or receive more information, contact Dr. Ira "Mike" Mickelson at 248-819-1235

## PAY YOUR BROTHERHOOD DUES TODAY! 2016-2017 FISCAL YEAR DUES ARE NOW DUE

Please remember your dues support the youth and community-oriented programs that Brotherhood sponsors.

Go to [www.temple-israel.org](http://www.temple-israel.org) and click on Get Involved, then go to the Brotherhood page.

**You can now pay your Brotherhood Dues online with a credit card.**

**Click the "Online Brotherhood Membership Application" link.**

## FROM THE VICE PRESIDENT



I am Rick Feldman and I am one of the Vice Presidents of Brotherhood. I've been active in Brotherhood and Temple Israel for about 30 years. When our family first joined Temple Israel, I would go to Friday night services by myself. Over the years, I've been joined by family and friends. We now sit together every Friday night and worship together.

I'm at Temple often... volunteering, attending classes, services, and concerts. I am on the Usher Corp, on the Torah Repair committee, and on the concert committee. I make phone calls for Temple, send out

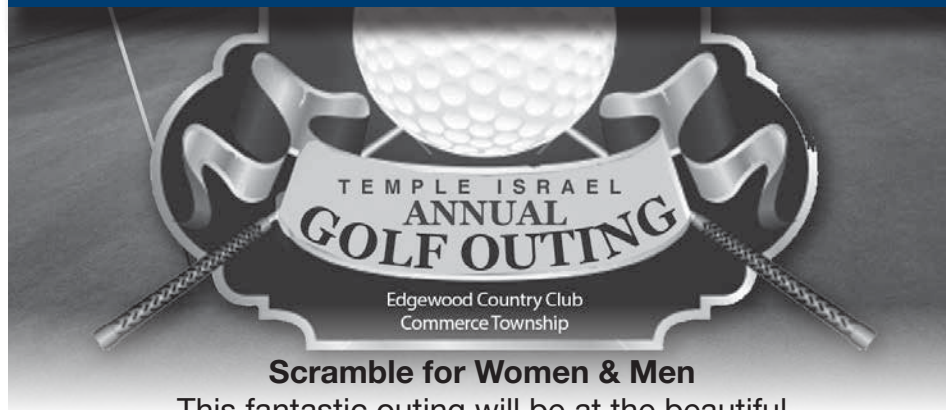
condolence cards from Brotherhood, and chair the Temple Israel golf outing. I've been to Israel and Eastern Europe on Temple trips.

Temple is a second home to me. The clergy and Temple family are important in my life. They support me in both happy and sad times. When I am away for any length of time, I feel that something is missing.

L'Shalom,

**Rick Feldman, Vice President**

## SAVE THE DATE: MONDAY, MAY 22



### Scramble for Women & Men

This fantastic outing will be at the beautiful

*Edgewood Country Club*



## Join us for the 85th Annual Inter-Congregational MEN'S CLUB DINNER

Hosted by: Congregation B'nai Moshe  
6800 Drake Road | West Bloomfield

**THURSDAY, FEBRUARY 9, 2017**  
**6 PM APPETIZERS AND COCKTAILS**

**6:45 KOSHER DINNER**

Catered by Chef Cari, Kosher catering

**COUVERT: \$54 PER PERSON**

*For tickets or information, contact Art Dubin at:*

*248-931-1509 or email: [countryart@comcast.net](mailto:countryart@comcast.net)*

*Mail checks to: Temple Israel Brotherhood*

*5725 Walnut Lake Road, West Bloomfield, MI 48323*

Guest Speaker:

**MICHAEL SMITH**

Archivist, Detroit Jewish News Foundation  
speaking on

*"Heroes, Builders, Jocks and  
Jokesters of Jewish Detroit"*



A walk through the William Davidson  
Digital Archive of Jewish Detroit

Detroit's rich Jewish history comes alive through the characters from all walks of life. Mike will take us through Detroit's Jewish archives to share stories of Hank Greenberg, Max Fisher, Jackie Kallen and many more who have made Detroit's Jewish history so memorable.

**TEMPLE ISRAEL BROTHERHOOD  
ALONG WITH B'NAI BRITH PRESENT**



**SUNDAY, MARCH 5, 2017**  
**4:30 - 11 PM AT TEMPLE ISRAEL**

**Celebrate Purim with Brotherhood & B'nai Brith**

194 Shekels (\$50) buy-in (in advance); \$60 at the door

116 Shekels (\$30) add-on • Deli tray included with buy-in

Prize fund based on 50% of buy-in

To RSVP, send a check payable to Temple Israel Brotherhood, to:

Temple Israel Brotherhood | 5725 Walnut Lake Road, MI 48323

Register online at [temple-israel.org/BrotherhoodShushan2017](http://temple-israel.org/BrotherhoodShushan2017)

Please RSVP by Tuesday, February 28th.

Questions? Call Brian Karbel at 248-425-3487 or [bdkarbel@comcast.net](mailto:bdkarbel@comcast.net),  
or Steve Achtman at 248-505-3939 or [ssbrm@ameritech.net](mailto:ssbrm@ameritech.net),  
or Rick Sherline at 248-613-5400 or [rsherline@divbenefits.com](mailto:rsherline@divbenefits.com)



Please join the Temple Israel Brotherhood as we host JARC and other guests from the community to watch the Detroit Pistons take on the Phoenix Suns, **Sunday, March 19th at 4:30 pm**. Upper bowl seats \$10.

A great family outing. Handicapped spaces available.

For more information or to purchase tickets contact  
Jim Grey (office) 248-540-9070 (cell) 248-739-9070  
or [greyco@aol.com](mailto:greyco@aol.com).

**Come out and cheer on the home team!**

## FELICITATIONS TO: WEDDINGS:

**ALANA REY BALBES**, Daughter of Pamela and Barry Balbes to Eric Michael Dritz, Son of Barbara and Steven Dritz.

**STEFANIE RAE BLOCK**, Daughter of Rebecca and Richard Block to Charles Mitchell Russman, Son of Helaine and Lawrence Russman.

**ALANA DEBRA CANVASSER**, Daughter of Marci and Charles Canvasser to Evan Scott Wolf, Son of Elaine and Mitchell Wolf.

**KARA ILYSE GREENE**, Daughter of Kenneth and Daryl Greene to Neil Simon Rodnick, Son of Toni and Corey Rodnick.

**LAUREN AUDREY KEPES**, Daughter of Fern and Brian Kepes to Adam Satovsky Rubin, Son of Lynn and Harvey Rubin.

**ERICA OWEN**, Daughter of Janice Owen Alexander and Neil Alexander to Alexander David Tapper, Son of Patti and Steve Tapper.

**KELLY JEAN RATUSHINAK**, Daughter of Jeannine LaBurda Ratushinak and Ronald Ratushinak to Barry Marc Bressler, Son of Roz Bressler.

**CAROLYN JENNIFER SALLEN**, Daughter of Rosellen and Steven Sallen to Justin Shane Thomas, Son of Elaine Pripstein Thomas and Richard Thomas.

**JODIE RENEE SCHRAM**, Daughter of Kim and Walter Schram to Matthew Adam Ran, Son of Rhonda and Gary Ran.

**HEATHER ANN SUMMERS**, Daughter of Sandra Taulbee to Jack Calderon, Son of Felicitas Calderon.

**ALLISON FAITH ZEID**, Daughter of Nancy and Barry Lefkowitz to Bradley Wayne Lefkowitz, Son of Michelle and Michael Zeid.

## BIRTHS AND BLESSINGS

**ILANA MARTI ADLER**, Daughter of Carolyn and Allison Adler. Grandchild of Susan and John Shanteau, Fran and Mark Adler and Amy and Ted Hammer. Great-grandchild of Annette Fingerroot and Ruth Glickstein.

**ELIZABETH FRANCES EDELSON**, Daughter of Virginia and Jeffrey Edelson. Grandchild of Gayle and Alan Edelson, Wendy Talan, Pattie and Carl Frischkorn and Rebecca Trafton. Great-grandchild of Beverly and Marvin Talan.

**ISLA RAE EDELSON**, Daughter of Stephanie and Gabriel Edelson. Grandchild of Amy and Craig Singer and Lori and Bernard "Robin" Edelson. Great-grandchild of Lois and Milford Singer, Deena and David Fishman and Nora Stone.

**LEO HUDSON FANTICH**, Son of Jennifer and Kevin Fantich. Grandchild of Rhonda and Steven Satovsky and Roz and Bernie Fantich. Great-grandchild of Betty and Marvin Adell, Phyllis Satovsky, Connie Sklar and Shirley Modiano.

**MILLY REESE FERRARI**, Daughter of Jamie & Chris Ferrari. Grandchild of Verne and Dr. Edward Royal and Alfred Ferrari.

**ARIA RACHELLE HOSKING**, Daughter of Leann Lugashi and Jason Hosking. Grandchild of David and Rachel Lugashi, Scott Hosking and Kim Lindbloom. Great-grandchild of Cathy Lindbloom.

**ELLA MAYA KOSTUKOVSKY**, Daughter of Alisa and Brian Kostukovsky. Grandchild of Brenda and Dale Surowitz and Isabella and Mark Kostukovsky. Great-grandchild of Larisa and Zinoviy Soybel, Mariya Kostukovsky, Leon Kostukovsky and Fanny and Sam Behmoiras.

**PENELOPE ISABELLE LEVINE**, Daughter of Wendy and Zachary "Zach" Levine. Grandchild of Marjorie "Marjie" and Alan "Al" Benson and Lynn and Steve Levine.

**ALEX SADIE LIPSON**, Daughter of Sara and David Lipson. Grandchild of Nancy and Ken Lipson and Beryl and Mickey Levin. Great-grandchild of Honora Lipson and Janet Weiss.

**EMMA ROSE LIPSON**, Daughter of Ashley and Craig Lipson. Grandchild of Lori and Dr. Lawrence Lipson, Ms. Diana Craig-Lipson, Bari and Jon Balbes and Adriana Leaf. Great-grandchild of Sonya Balbes, Nelson Riveros, Beatriz Riveros, Maureen Leaf.

**MAYA ARIELLE MIKINBERG**, Daughter of Melissa Marcus and Eduard Minkinberg. Grandchild of Andrea and Ken Marcus and Polina and Mark Minkinberg. Great-grandchild of Zena and Mischa Ginzburg.

**LUCY REVA SCHELBERG**, Daughter of Karen and David Schelberg. Grandchild of Drs. Marilyn Gans Schelberg and James "Jim" Schelberg and Wendy and David Sarmir.

**RYAN DIANA SILVER**, Daughter of Carrie Silver and Lindsay Jurich. Grandchild of Dorit and Stephen Silver and Linda and Mitch Jurich. Great-grandchild of Katalin and Benzion Gottlieb.

**LENORA ROSE TEMPLIN**, Daughter of Samantha and Zachary Templin. Grandchild of Fay and Barry Wax and Christina and Brian Templin. Great-Grandchild of Lubena Wax, Gladys Templin and Agnus Rosebrook.

## IN MEMORIAM

**FAY BECKWITH**, Mother of Stuart (Gerri) Beckwith, Peter (Beverly) Beckwith, Fredrika "Fred" (Dr. Howard) Crane, Marcia (Jim Tasse) Beckwith and Jackie (Joel) Smith. Grandmother of Jeremy (Rachel) Crane, Andy (Ali) Crane, Adam (Melissa) Dorfman, Lisa (Jon) Goodman, Aimee (Benjamin) Kleiman, Corey Beckwith, Jaime Beckwith, Michelle Beckwith, Brian Beckwith, Jennifer (James) Rhein and Jacob Smith. Great-grandmother of Jack, Sam, Emily, Jonah, Jillian, Josh, Elliott, Ezra, Orly, Asher and Owen.

**ANNE BEGEL**, Mother of Irene Al-Azem, Jerry (Sandi) Begel and Elaine (Robert) Sandy. Grandmother of Alyah and Sara Al-Azem, Emily (Aaron Siegel) Begel, Marshall (Marsha Zelmanski) Begel, Rachel (Sam) O'Connell, Victoria Hatfield and Dennis Hunt. Great-grandmother of Sol O'Connell, Matilda O'Connell, Wyatt Siegel and Corey Siegel. Sister of Frank (Mickey) Tencer.

**FRED IRA BROWN**, Husband of Helen Brown. Father of Rodney "Rod" (Vicki) Brown, Marty, Mike, Steve (Julie) Brown. Grandfather of Joshua, Brittany and Samantha Brown, Donovan, Camryn, Bryan, Andrew and Jason. Brother-in-law of Seymour (Harriett) Lusky and Irene Lusky.

**SEYMOUR "SY" COHEN**, Father of Natalie (Howard Fertel) Cohen and Jill (David Fertel) Cohen. Brother-in-law of Larry and Virginia Mann. Grandfather of Nicholas, Nina and Julia Fertel. Uncle of Michael Mann, Laynee Langer and Matt (Rebecca) James.

**LOUIS RAYMOND DAMRAUR**, Husband of Faye (Bluestein) Damraur. Father of Michele (David) Kaplan, Sherie (Joe) Kalo and Jodi (Dr. Jay) Eichler. Grandfather of Marisa (Hector) Hernandez, Michael Kaplan, Todd Kaplan, Gal Kalo, Danielle (Omer) Shorr, Chelsey Eichler and Carly Eichler. Great-grandfather of Alexa, Ariella and Ethan Hernandez. Brother-in-law of Melvin (Naama) Bluestein and Max Freedman.

**DOROTHY DUNITZ**, Mother of Judy Rosenberg, Nancy Bruch and Michael (Rae) Dunitz. Grandmother of Jeffrey (Candi) Rosenberg, Karen (Richard) Sweet, Linda Rosenberg, Dr. Jill (Dr. Joseph Molko) Jacobson, Robin (Joseph Billig) Jacobson, Max Dunitz and Kate Dunitz.

**GERALD EMMER**, Husband of Deborah Emmer. Father of Caren (Dave) Baker and Megan (Ben) Palmer. Grandfather of Cameron Michael Palmer. Brother-in-law of Lewis Sandubrae.

**MARY EHRLICH**, Mother of Michael (Chris) Ehrlich, Linda Bloch, Carol (Jay) Kravetz and Susan (Richard) Katz. Grandmother of Brian (Hillary) Bloch, Amy (Roger) Young, Cindy (Jeremy) Durham, Melissa (Richie) Buchan, Max (fiancée, Sujeong Kim) Ehrlich, Jennifer Kaplan, Ryan (Emily) Kravetz, Rachel (Jerry) Pecka, Nathan (fiancée, Laurens Dubuisson) Katz. Great-grandmother of Dahlia Bloch, Ramona Bloch, Dylan, Evan and Kelsey Young, Peyton Durham, Brooke Durham, Henry Kravetz, Hannah Kravetz, Jessica Kaplan and Amanda Kaplan. Sister-in-law of Edith Maniker and David Silberg.

**CHARLES "CHUCK" FANTICH**, Husband of Brenda Fantich. Father of Dr. Jeffrey (Deborah) Fantich, Danny Fantich, Carolann (Mark Cook) Fantich and James (Cindy) Fantich. Step-father of Lisa (Keith) Hall, Tracey (Jason) Carlock and Steven (Carolyn) Gabel. Grandfather of Gabrielle, Julia and Jade Fantich, Brandon, Taylor and Ryan Hall, Miller, Megan and Andrew Carlock, Olger, Zane, Isaac and Knute Fantich, and Jaclyn, Aaron, Alexandra and Courtney Gabel. Brother-in-law of Judy (Michael) Reznick and Eileen (Harry) Greener. Cousin of Marion Weinger.



# TEMPLE FAMILY

**LINDSEY BETH JACOBS FINSILVER**, Wife of Brett Finsilver. Mother of Charles "Charlie" and Francesca "Frankie" Finsilver. Daughter of Robert and Leslie Jacobs. Sister of Lauren (Eric) Bean. Daughter-in-law of Stanley "Stan" and Shari Finsilver. Sister-in-law of Amy and Steven Ben-Ezra. Aunt of David "Koby", Reese and Chase Ben-Ezra, Jacob, Alex and Catherine Bean.

**LEONARD GALPER**, Husband of Pearl Galper. Father of Barbara (Barry) Feldman and Diane (Bruce Meyers) Galper. Grandfather of Ean and Beth Feldman, Carlee and Erica Meyers. Brother of Sol (Estelle) Galper. Brother-in-law of Helen (Arthur) Bednersh and Sylvia Rosen.

**CARON GOLDFINE**, Wife of Michael Goldfine. Mother of Stacey Goldfine and Ilene (Jesse Carrillo) Goldfine. Grandmother of Madelyn and Rachel. Sister of Richard "Rick" (Randa) Feldman. Sister-in-law of Loretta Falk.

**SANFORD PHILLIP GREEN**, Husband of Shirley Green. Father of Rhonda (Jeffrey) Shuster, Jon Green, Andrew (Diane) Green and Elizabeth Green. Grandfather of Daniel Shuster, Amanda (Ethan) Smith, Jeremy Green and Sherri Green. Great-grandfather of Elle Smith.

**SAUL GROSSMAN**, Husband of Rona Grossman. Father of Beth Lipman and Andy (Donyella) Grossman. Grandfather of Arielle and Jonah Lipman, Daniel Grossman. Brother of Meir (Hadassa) Grossman. Uncle of Jodi (Robert) Galperin.

**MARILEE HELFMAN**, Wife of David Helfman. Mother of Seth (Arielle) Helfman, Amy (Jonathan) Goldstein and Dr. Bethany Helfman. Sister of Mark (Sharon) Hanson and Sue Jane Hotary. Grandmother of Ava Stashefsky, Ryan Goldstein, Sammy Goldstein, Harlow Goldstein, Hunter Helfman and Harper Helfman.

**LEONARD HAMMER**, Husband of Olivia "Ollie", "Mrs. Uber" Hammer. Father of Brian (Abbie) Hammer, Lori (Robert) Stashefsky and Michelle (Paula Garcia) Hammer. Grandfather of Zachary Stashefsky. Brother of Rose Mark. Brother-in-law of Dr. Avery (Robin) Murav.

**FANNY HERMAN**, Mother of Sal (Judee) Herman, Jane (Charles) Kessler. Mother-in-law of Joyce Herman. Grandmother of Jay (Lisa) Imerman, Bruce (Colleen) Imerman, Marla (Adar) Venyige, Stacy (David) Schonberg, Allison (Bradley) Levick, Micah (Sarah) Herman, Jerusha (Kole) Roybal, Norah (Mark) Sangid and Kircia (Rick) Casten. Great-grandmother of Rachel, Jeremy, Benjamin "Benny" and Elliot Imerman, Ryan, Lauren and Ashley Imerman, Hannah and Isaac Venyige, Maya and Avery Herman, Mila Sangid, Jacob Schonberg, Elle Casten and Jack Casten. Sister of Ben (Ida) Moskovitz. Sister-in-law of Marilyn Marvel.

**MATEI HERTY**, Father of Steven (Kathy) Herty and Darryl Herty. Grandfather of Lauren and Shoshana Herty, Mollie, Rebecca, Joshua, Michael (Molly), Ashley, Aimee and Julie. Great-grandfather of Leo.

**BARBARA KAYE**, Mother of Bruce Kaye and Stuart (Valerie Malter) Kaye. Grandmother of Andrew, Jordan, Michael, Matthew and Arin Kaye.

**PEGGY ANN KOVIAC**, Aunt of Andrea (David) Trivax.

**SEYMOUR J. LANSAT**, Father of John (Margo) Lansat and Ina (Amado) Ramirez. Grandfather of Shadia Makki. Brother of Bernice Marks. Brother-in-law of Judy Lansat.

**GREGORY "GREG" LAUB**, Father of Jami, Sydney and Ryan Laub. Brother of Robert (Fern) Laub and Darin (Mindy Metkin) Laub. Uncle of Samantha, Perry, Adam and Nicole Laub. Nephew of Jack Feingold. Former wife, Karen Laub.

**JOSHUA ARI MARKS**, Son of Brian and Shelly (Budman) Marks. Brother of Lexie Marks. Grandson of Robert "Bob" (Cynthia "Cindy" Gioia) Budman, Mike and Arlene Marks, and Jerry (Stephanie) Nostadt. Great-grandson of Sarah Neuman. Nephew of Neal (Callie) Budman, Julie Marks, Keith (Kathryn) Marks, Mike (Amy) Owen, Jessica Nostadt, Lisa Gioia and Bart Gioia.

**ESTHER MAYER**, Mother of Leon (Beth Jacobs) Mayer and Miriam (William) Raminick. Grandmother of Benjamin Mayer, Daniel Mayer and Mindy Raminick. Aunt of Eric (Martha) Young, Marla (David) Giwerc and Dr. Joel (Mindy) Young. Great-aunt of Benjamin, Kathryn "Katie" and Emily Young.

**NORBERT SAMUEL METLER**, Husband of Sandi Metler. Father of Dr. Lisa Metler (Gerald) Boreland and Paul and Lisa Marie Metler. Grandfather of Lea, Mara, and Ilana. Brother of Maynard (Debbie) Metler and sister Elaine (Bill Heller) Kaufman.

**DONALD MILLER**, Husband of Sandra "Sandy" Segall. Father of Marcy Lichtcsien and Mark (Robin) Miller. Brother of Anita (Edward) Haenick. Grandfather of Rachel (Carl) Amerine and Adam (Megan Bochnak) Lichtcsien, Chris (Angie) McPherson, Danny McPherson and Ian McPherson. Great-grandfather of Helena McPherson. Brother-in-law of Ruth Ruderman and Marilyn Segall Carafelli.

**ANN JANE NEIRYNCK**, Mother of Joann (Charles) Dean and James (Josephine) Neirynck. Mother-in-law of Susan Neirynck and Jodi Neirynck.

**STEVEN NEUMAN**, Son of Sarah Neuman. Brother of Linda (Robert) Schmier. Brother-in-law of Robert (Cindy Gioia) Budman. Uncle of Shelly and Brian Marks, Neal and Callie Budman, Brian and Jamie Schmier, Brad and Alyson Schmier, Lauren and Tim Carey. Great-uncle of Lexie Marks, Marianna, Sofia, and Eleanna Budman, Jake, Chloe and Cole Schmier, Myla Schmier, Dylan Carey. Nephew of Norma Bisgeier and Judy Stein.

**DR. LEROY NEUMANN**, Husband of Brenda Neumann. Father of Dr. Fredric "Fred" (Felicia) Neumann, Shari Neumann, Dr. Michael (Brian Kutinsky) Neumann and Craig (Melissa) Neumann.

Grandfather of Dr. Miles Neumann, Cole Neumann, Jade Neumann, Mia Neumann, Eve Kutinsky, Leah Kutinsky and Ari Kutinsky. Brother of Mickey (Frank) Tencer, Martin Newman, and Seymour (Cookie) Newman. Brother-in-law of Lois Tonkin and Wendy (Jack Lifton) Mintz.

**GLORIA L. OLESHANSKY**, Mother of Jerry (Susan) Oleshansky and Marc Oleshansky. Grandmother of Michael (Julie) Oleshansky, Michelle (Andrew) Morgan, Aaron (Jocelyn) Oleshansky and Zoe Oleshansky. Great-grandmother of Mackenzie, Madison and Marissa Morgan, Hayden, Hunter and Josh Oleshansky. Sister of Peter (Faye) Globerson and Larrie Globerson.

**ALAN PERLMUTER**, Husband of Gail Perlmutter. Father of Sheryl (Kenneth) Stoller, Steven (Adam Keen) Perlmutter, Kevin (Nicole) Bopp and Elin (Alex) Imas.

**MARK RICHIE**, Husband of Patricia "Patty" Richie. Father of Justin (Alison) Richie. Brother of Debbie (John) Steinberg, Karen (Rick) Greer and Wendy (Melvin) Dryman.

**JOSEPH ROSE**, Companion of Joan Rosen. Father of Andrea Rose, Jody Rose (fiancé Michael Metzger) Friedman, and Scott Rose. Father-in-law of Sophie Rose. Stepfather of Bill (Christine) Ruby and Howard (Mandy Cohen) Ruby. Also survived by Joan's children, Ellen Rosen (Lenny) Kaplan, Michelle (Howard) Pinsky and Lauren Rosen. Grandfather of Jennifer Friedman, Pierre Rose, Lily Rose, Emily, Samantha and Sage Ruby, Hannah (Adam Cox) Kaplan, Jordan Kaplan, and Dayna and Samantha Pinsky. Great-grandfather of Rosalyn Cox. Brother of Sylvia Waldman.

**CYNTHIA L. RUBIN**, Wife of Norman Rubin. Sister of Allen (Adina) Linden. Sister-in-law of Paula and Melvin Menuck, Edith Linden, and Faye Starr. Aunt of Sylvia and Ronald Marabate, Arlene and Juan Zapata, Jonathan and Wendy Linden, Ann and Glen Glater, Michele and Seth Corin and Jason Menuck.

**REGENE SCHMIER**, Mother of Dr. Ronald "Ronny" (Ellen) Schmier, Jeffrey (Gabi) Schmier, Robert (Linda) Schmier, Susan (Jerry) Oleshansky, Joann Lillis, Diane (Alan) Levine, Mark Schmier, Liz Schmier, Holly Baird. Grandmother of Jason (Robyn) Schmier, Stephen (Elyssa) Schmier, Sebastian and Celeste Schmier, Brian (Jamie Rosemurgy) Schmier, Brad (Alyson) Schmier, Lauren (Tim) Carey, Kate (Uri Gurvich) Schmier, Michelle (Andy) Morgan, Michael (Julie) Oleshansky, Jennifer Lillis, Shanna (Nestor) Rivera, Evan Lillis, Leslie (Taylor) Marton, Julia Marton, Emilia Schmier and Sydney Schmier. Great-grandmother of Ava Schmier, Jake, Chloe and Cole Schmier, Myla Schmier, Dylan Carey, Mackenzie, Madison and Marissa Morgan, Hayden, Hunter and Joshua Oleshansky, Jasmine and Elan Rivera. Sister-in-law of Beverly Schmier and Theda Schefman.

## TRIBUTES

**ILENE "IS" ROCHELLE SCHUSTER**, Wife of Malvin "Mal" Schuster. Mother of Sara (Steven "Steve") Kraft, Morgan Schuster and Carrie (Alan) Holtz. Sister of Jan (Larry) Greenberg and Peggy (Daniel "Danny") Palter. Grandmother of Joshua "Josh", Jared and Ian Kraft, Alexa and Adin Greenbaum. Aunt of Jessica and Ryan Palter.

**ESTHER SHAPIRO**, Mother of Andrea K. (James Williams) Shapiro. Daughter-in-law of Ann Shapiro. Grandmother of Evelyn Shapiro, Matthew (Amanda Stiles) O'Connor, Nick (Holly Turner) Shapiro and Peter (Jennifer) Shapiro. Great-grandmother of Harold Shapiro-Pedersen, Maxwell and Mariana.

**DOROTHY HENRIETTA SHERMAN**, Mother of Dr. Stanley (Janice) Sherman and Paula (Howard) Linden. Grandmother of Erin (Dr. Ilya Ruvinsky) Sherman, Adam (Dr. Monica) Sherman, Dr. Laurie (Dr. Robert "Robbie") Kohen and Lee Linden. Great-grandmother of Addison and Drew Kohen, Cora and Margot Sherman and Hannah Ruvinsky.

**FLORENCE SLIFKIN**, Mother of Eileen Kolodin, Deborah Jones, and Barbara (Stephen) Becker. Sister-in-law of Dr. Sanford "Sandy" Rosenfeld.

**LEONARD TRUNSKY**, Father of Isabel (Milton) Dzodin, Ruth (Bruce) Aaronson, Donna (Richard) Brown and Roger (Barbara) Trunsky. Grandfather of Hilary (Abraham) Lewinsohn, Brian Dzodin, Daniel Dzodin, Laura (Craig) Charnas, Randy Aaronson, Justin (fiancé, Mai Amrose-Wagman) Brown, Jared (fiancé, Suzette Farber-Katz) Brown, Scott Aaronson, Jacob Trunsky, Zachary Trunsky and Leah Trunsky. Great-grandfather of Madison and Gillian Charnas and Alexis Kaganas. Brother of Dr. Ronald (Judy) Trunsky. Brother-in-law of Jane Trunsky.

**JANE WEINER**, Wife of Seymour Weiner. Mother of Mark (Lynn) Weiner, Allen (Lisa) Weiner and Lori (Kevin) Goldberg. Grandmother of Brandon Yarsike, Chad Weiner, Michael Weiner, Jacob Weiner, Erin Goldberg and Zachary Goldberg. Aunt of Marcia Garland.

**DORIS EVELYN WINFREY**, Wife of Earl C. Winfrey. Mother of Tyrone E. (Janice Marie) Winfrey, Sr., Grandmother of Yashica LeFay Hamilton, Tyrone E. Winfrey, Jr., Lauren Janelle Winfrey and Chad Jonathan Winfrey. Sister of Marjorie (Joe) Odom, Frances Phelan, Lovie (Jay) Fisher, Marilyn Hopewell, and Carolyn Robinson. Sister-in-law of Rosanna James and Amelia Winfrey.

**MILDRED "MILLIE" WISH**, Mother of Stuart (Kimberly) Wish and Shelley (Neil) Chaness. Grandmother of Bret, Taylor and Madison Chaness and Zachary (Ella) Wish. Great-grandmother of Mason and Luca Wish. Sister of Charles (Sharon) Bender.

### ADMINISTRATOR'S DISCRETIONARY FUND

*For charitable purposes.*

**In Honor Of:**

In appreciation of Risa & Brian Kirschner & Family; Mazel Tov on the engagement of Debbie Taxe & Norman Trepeck – Yolanda & David Tisdale

In appreciation of Yolanda & David Tisdale – Rhoda Paull

**In Memory Of:**

Judy Coe – Yolanda & David Tisdale

Marilee Hellman – Erik, Andrew, Rebecca & Lia Shawn

### ADULT ISRAEL PILGRIMAGE FUND

*Supports Temple Israel pilgrimages to Israel for adults.*

**In Honor Of:**

55th Wedding anniversary of Cydnie & Jim Reich – Phyllis & Arnold Serlin

### GEORGE & SHIRLEY AGREE CARING COMMUNITY FUND

*Provides birthday parties for residents of nursing homes, orphanages, and shelters.*

**In Honor Of:**

50th Wedding anniversary of Barbara & Steve Gutman – Laura & Ron Miller

### APPEL FAMILY CONCERT FUND

*Provides funding for an Annual Music Program.*

**In Memory Of:**

Fred Brown; Dr. LeRoy Neumann – Arlene & Fred Miller

### DONNA & ALLAN APPLE FUND FOR CHILDREN WITH SPECIAL NEEDS

*Provides madrichim support for children with special needs.*

**In Honor Of:**

Bat Mitzvah of Lola Belchinsky – Linda & Allan Gurvitz  
Special Birthday of Bonnie Brenner – Donna & Allan Apple  
Bar Mitzvah of Noah Cooper – Bonnie Brenner & Earl Rudner  
Mazel Tov to Dr. & Mrs. Edward Haenick on the Bat Mitzvah of your granddaughter – Nancy & Harvey Lash  
Speedy recovery of Gene Nabat; 75th Birthday of Joel Piell – Mickey & Cal Mackey

**In Memory Of:**

Judy Coe; Danny Glass – Donna & Allan Apple  
Betty Cohen; Donald Miller; Sadie Schlaff – Nancy & Harvey Lash

### SUSIE F. ARNOLD CHOIR FUND

*Provides funding for the Shabbat Singers Choir.*

**In Memory Of:**

Cecilia Pivoz – Beth & David Kischner

### MAURICE EDWIN BARR HEBREW SCHOLARSHIP FUND

*Provides engraved Bibles to two outstanding 8th grade students.*

**In Honor Of:**

Birth of Elula Belle Goutman – Debbie & Jeff Chutz

### BARBAS FAMILY FUND

*Provides program funding for empty nester adults.*

**In Memory Of:**

Marjorie Kurzmann – Lisa & Andrew Barbas

### MORRIS & ESTHER BITTKER LABOR DAY PICNIC FUND

**In Honor Of:**

Bar Mitzvah of Benji Stern – Karen & Jack Singer

### BARBARA & DOUGLAS BLOOM SPECIAL NEEDS FUND FOR SINGLE MOTHERS

*To provide assistance to single moms in crisis who are Temple Israel members.*

**In Honor Of:**

Speedy recovery of Stacey Deweese; Special Birthday of Lou Soverinsky – Barbara & Douglas Bloom

In appreciation of Rabbi Marla Hornsten – Deb & Lon Katz  
Special Birthday of Eric Schiffer – Ellen & Marc Whitefield

**In Memory Of:**

Sandor Gelman – Jaimie Clayton, Oakland Family Services  
Ruth Share – Ellen & Marc Whitefield

**Marking Yahrzeit Of:**

Yetta Kagan – Linda Birdsong, Marcie & Sheldon Weinstein

### DAVID & JEAN BRENNER MEMORIAL SCHOLARSHIP FUND

*Provides a graduating senior from the Temple Israel High School with a stipend to purchase textbooks.*

**In Memory Of:**

Elaine Beneson; Dani Brenner; Donda Rossman; Regene Schmier; Doris Winfrey – Judy & Pepper Mintz

**Marking Yahrzeit Of:**

David Brenner – Judy & Pepper Mintz

### BROWN FAMILY HEBREW EDUCATION FUND

*Provides a full need-based Hebrew School scholarship annually.*

**In Honor Of:**

Speedy recovery of Bobbi Gordon – Jo Ann & Tom Hornsten

**In Memory Of:**

Lindsey Beth Jacobs Finsilver – Jo Ann & Tom Hornsten

Saul Grossman – Jack Caminker

### MARLENE BUDMAN REMEMBRANCE GARDEN FUND

*Plants spring flowers annually on the grounds of Temple Israel.*

**In Memory Of:**

Bess Glazier – Linda & Bobby Schmier

Joshua Ari Marks – Lillian Goldberg; Rochelle (Platt) & Chuck Markle; Sheri Michaels; Marlene Platt & Laurie & Jeffrey Tackel

Stevie Neuman – Marcy Berman; Ellen Bisgeier Altman, Mark Bisgeier, Norma Bisgeier & Robert Bisgeier; Elaine & Richard Corey & Norman Bobroff; Dr. Karen Bolak & Frances Finsilver; Suzanne & Jeff Deutch; Lindsey, Brett, Charlie & Frankie Finsilver; Paula & Lou Glazier; Leslye & Rick Golding; Jill & Michael Koidin; Rochelle Platt & Chuck Markle; Sheri Michaels; Ru & Marty Pevzner; Rita Rubin; Joan & Neil Satovsky; Marcy & Steven Saxe; Lena & Darren Schwartz; Sally & Lou Soverinsky; Judy Stein & Family; Marlene Platt & Laurie & Jeff Tackel; Maddi & Steve Sackel  
Regene Schmier – Judy Stein & Family

### COURTNEY LISA CANTOR ISRAEL TRAVEL SCHOLARSHIP FUND

*Provides funds for youth travel to Israel.*

**In Honor Of:**

Birth of Elula Belle Goutman; Mazel Tov to Barbara & Norman Samson – Sherry Cantor

B'nai Mitzvot of Mia Hirsch & Miles Hirsch – Cheryl & Marc Bocknek

**In Memory Of:**

Remembering Courtney Cantor – Judy & Irving Blau  
Lindsey Finsilver – Sherry Cantor & Jaime & Michael Ben & Family

Leonard Galper – Linda & Joey Roberts

Caron Goldfine – Beth & Rob Sklar

Bud Sherbow – Judie LaBret & Jerry Agranove

Dorothy Sherman – Barbara & Stan Bershad; Sherry Cantor & Sylvia Bershad

**Marking Yahrzeit Of:**

Benjamin LaBret; Rose LaBret; Bella Meretsky; Paul Meretsky; Milton C. Meretsky; Ruth C. Meretsky – Judi LaBret

### CANTORS' DISCRETIONARY FUND

*For charitable purposes.*

**In Honor Of:**

Special Birthday of Linda Gurvitz – Sue Ellen Simon & Art Berlin

In appreciation of Cantor Neil Michaels – Sue Ellen Simon & Arthur D. Berlin; Karen & Andy Coden & Family; Corey, Lisa & Matthew Fein; Jo Ann & Tom Hornsten; Ethan Marcus & Family; Seel Family; Julie & Billy Stern; Dylan Young & Family

In appreciation of Cantor Michael Smolash – Finerty Family

**In Memory Of:**

Gene Levine – Sterling Family



# TRIBUTES

## CARING COMMUNITY FUND

*Supports the programs of Temple Israel's Caring Community.*  
In Honor Of:

In appreciation of Rabbi Josh Bennett – Schelberg Family  
Mazel Tov to Marla & Mark Canvasser on the Wedding of your children; Mazel Tov to Debbie & Norman on your engagement – Carolyn & Steven Marks

Mazel Tov to the Edmunds Family on the birth of your granddaughter – Debbie & Henry Gornbein  
Speedy recovery of Jason Eisenberg; Speedy recovery of Bobbi Gordon – Carolyn & Steven Marks

Birth of Maya Elizabeth – Dr. & Mrs. Herman Zicherman  
Speedy recovery of Murray Feldman – Liz & Bill LaKritz; Paula & Melvin Menuck  
Birth of Milly Reese Ferrari – Kari & Jeff Provizer & Family; Yolanda & David Tisdale

Bat Mitzvah of Alexis Forman – Barbara & Raymond Horenstein; Michelle & Jason Rosenfeld

In honor of Karen & Bruce Gilbert – Wendy & Robert Winnick  
In appreciation of Barbara & David Goldman – Elaine Kaufman & Family

Birth of Elula Belle Goutman – Shirley & Stan Halprin  
50th Wedding anniversary of Barbara & Steve Gutman – Nancy & Cecil Raitt

Mazel Tov to the Grossman Family on the birth of your Grandson – Debbie & Henry Gornbein

Bat Mitzvah of Abbey Gursten – Sherry & Danny Stewart  
Mazel Tov to Mr. & Mrs. Marc Schechter on the birth of your granddaughter Harper – Ellen Firestone

In appreciation of Sheila & Dan Schiffer – Rhoda Paul  
Bat Mitzvah of Emily Schiffer – Yolanda & David Tisdale  
Speedy recovery of Melanie Sicherman; In appreciation of Temple Israel Clergy & Staff – Lorraine & Arnie Fisher  
Bat Mitzvah of Benji Stern – Judy Shewach & Fred Stevenson  
Bat Mitzvah of Zoe – Rita & Paul Sherr

In Memory Of:

Fred Brown – Karen Singer  
Judy Coe – Mr. & Mrs. Andy Marks; Carolyn & Steven Marks;  
Dr. Amy Marks Swedler & Mr. Aaron Swedler  
David Cohen; Richard Roth – Liz & Bill LaKritz  
Dr. Marc Dwoskin – Dr. Sue Carron & Howard & Debbie Simon  
Charles Fantich – Ruth Beresh; Marks Electric Company; Judy Shewach & Fred Stevenson

Lindsey Finsilver – Jan & Bob Emmer; Fienman Family; Linda & Herbert Glass; Shirley & Stan Halprin; Liz & Bill LaKritz; Carolyn & Steven Marks; Yolanda & David Tisdale  
Jack Friedman – Lillian Goldberg; Caryn, Harold & Jessica Rothenberg; Mindy & Buzz Wachler  
Leonard Galper – Sari & Jeff Blackman & Family; Shawn Forman & Family; Carolyn & Steven Marks

Danny Glass – Linda Dembs; Dorene Finer  
Caron Goldfine – Karen & Larry Faber; Linda & Joey Roberts; Sheila & Dan Schiffer

Alan Kaplan – Suzie Leach Share  
Esther Kurtz – Shawn Forman & Family  
Greg Laub – Bobbie & Michael Byer; Eileen & Stuart Eisenberg  
Dorothy Medalie – Dulcie Rosenfeld & Family

Ann Jane Neirynck – Marci, Mark, Evan & Riley  
Dr. LeRoy Neumann – Sherrie & Norty Stern  
Rose Rice – Diane Levy-Rubinstein & Steve Mattler

Mark Richie – Lynn & Jeff Aleman; Charlotte Arbit; Joanne, Danny, Sara, Ben & Anna Aronovitz; Joan & Bill Bobee; Stephanie Brownick; Rena & Mark Lewis; Your Loving Friends; Jill & Greg Rostker; Liz & Steve Schubiner; Weinberger & Herman families

Cynthia Rubin – Susan & Stuart Levine; Yolanda & David Tisdale  
Sadie Schlaff – Sherry & Bob Eisen; Liz & Bill LaKritz  
Randi Schreiber – Erin & Marc Young

Dorothy Sherman; Leonard Trunsky – Carolyn & Steven Marks  
Millie Wish – Caryn, Harold, Jessica & Shelby Rothenberg; Yolanda & David Tisdale; Verona family

Jason Zaks – Carolyn & Steven Marks; Harriet Trager

Marking Yahrzeit Of:

Bruce Binder; Ruby Binder; Louis Glickman – Ruth Binder  
William Z. Krasnick – Dulcie Rosenfeld & Family  
Elaine Roberts – Joan & Bill Bobee; Chad Roberts & Family;  
Patti Roberts & Jim Bialk & Family; Joe Roberts & Family; Mike & Carole Roberts & Family; Gwen Baseman & Joe Ziomek; Sheri Mark & Abe Slaim & Family

Leon Simon – Harriet Simon

## CONCERT/LECTURE FUND OF TEMPLE ISRAEL

*Assists in the support of concerts and lectures at Temple Israel.*  
In Honor Of:

50th Wedding anniversary of Barbara & Steve Gutman – Elaine & Shelly Greenberg

In appreciation of Cantor Neil Michaels – Rose & Steve Sallen & Family

Bar Mitzvah of Benjamin Stern – Debbie Levin & Larry Snider  
In Memory Of:

Elaine Benson – Marci & Marvin Shulman

Danny Glass – Sharon & Jay Daitch

Cynthia L. Rubin – Norman J. Rubin

Marking Yahrzeit Of:

Harold S. Nyman – Zeata Nyman

Helen Rubin – Delores Michael

## ETHEL & ROBERT DANTO CHILDREN'S LIBRARY & MEDIA CENTER FUND

*Provides annual support for the Hodari Family Children's Library and Media Center.*

In Honor Of:

Bat Mitzvah of Emily Schiffer; Bar Mitzvah of Benji Stern – Lauren, Rick, Ethan, Isabel & Olivia Johnson

## ARTHUR DUBIN CHILDREN'S SPECIAL NEEDS SCHOOL FUND

*Aids families with children with special needs.*

In Honor Of:

Speedy recovery of Dr. Stuart Leff – Carol & Michael Kromirs  
50th Wedding anniversary of Eleanor & Marv Weinstein – Susie, Howard, Art & Wally Dubin

In appreciation of Temple Israel – Charles Gelfond  
Wishing a Happy Chanukah to Emily, Noah & Jessica Tracht – Phyllis & Donald Rothen

In Memory Of:

Marlyn Schwebel Been – Bill Rosen  
Mary Ehrlich; Charles Fantich; Frances Gendler; Mark Richie; Regene Schmier – Art Dubin  
Lindsey Finsilver – Susan, Howard & Art Dubin; Diane & Harvey Hauer

Bessie Glazier; Caron Goldfine; Jerry Penfil; Bela Schlesinger; Leonard Trunsky – Susan, Howard & Art Dubin

Betty Shipper – Barbara & Larry Haber  
Marking Yahrzeit Of:

Michael Gerus – Annette & Steve Gerus

## ZACHARY M. TALAN EDELSON MACCABI SCHOLARSHIP FUND

*Provides scholarships for Temple Israel Maccabi participants.*

In Honor Of:

Marriage of Allison & Brad Lefkowitz; Marriage of Jodi & Matt Ran – Linda & Andy Jacob

In Memory Of:

Fred Brown; Diane Frederick; Millie Wish – Sherri & George Glassman & Family

Betty Cohen – Sandy & Paul Schwartz

## STEPHANIE HOPE ELLIS COLLEGE SCHOLARSHIP FUND

*Assists a college-bound Temple Israel Religious School senior.*

In Honor Of:

In honor of Sonny & Norm Cohn, & Happy Chanukah – Randy & Darcie Cohn  
Bar Mitzvah of Dylan Young – Joni & Steve Redisch

In Memory Of:

Jack Friedman – Barbara & Edward Cherkinsky

Patricia Sarasohn – Mary & Jerry Ellis

Marking Yahrzeit Of:

Stephanie Ellis; Joseph Grant – Barbara & Barry Grant

## ANNE & EDWARD FIENMAN COLLEGE SCHOLARSHIP FUND

*Provides a college scholarship to a graduating senior from Temple Israel Religious School.*

Marking Yahrzeit Of:

Howard Klepner – Rosanne & Ben Fienman

## RABBI LEON FRAM SCHOLARSHIP FUND

*Supports the Temple Israel's Religious School and Nursery School scholarships and programs.*

In Memory Of:

Gertrude Lieberman – Jerry Stern

## FLORENCE A. GELLER FOOD FOR THE NEEDY FUND

*Provides food for the needy.*

In Memory Of:

Jack Friedman – Roslind Hayes

Leonard Galper – Roz & Leon Levine

Don Miller – Roz & Leon Levine; Laura & Ron Miller

Marking Yahrzeit Of:

Harold Michaels – Sheila Michalowsky

## JASCHA GELMAN MEMORIAL FUND

*Provides funding for Israel trip scholarships.*

In Honor Of:

In appreciation of Dr. Ronald Pelavin – Marilyn & Arnold Levin

In Memory Of:

Sandor Gelman – Angie & Mark Calice; Marci & Larry Coggan; Brian Einhorn; Peggy & Dennis Frank; Brett Finsilver; Barbara & Steven Gutman; Amy & Andrew Horowitz; Helen & Earl Koenig; Fran & Phil Levin; Marilyn & Arnold Levin; Sherri & Eddie Lumberg; Carole & Jerry Maltzman; Sandi & Thom Millman; Bert Rapowitz; Harriet & Dr. Norman Rotter; Joan & Neil Satovsky; Marilyn Victor; Rebecca, Scott, Reuben & Ari Zarret

## GENERAL ENDOWMENT FUND

*Provides long term funding for Temple Israel.*

In Honor Of:

70th Birthday of David Jaffa – Laurie & Mark Blinder

In Memory Of:

Saul Grossman – Hilary Mellin & Family

## GENERAL GIFTS FUND

*To provide general financial support of Temple Israel.*

In Honor Of:

Bat Mitzvah of Rikki Aronoff – Marlene Thav  
Speedy recovery of Murray Feldman – Gail & Henry Sandweiss

In Memory Of:

Saul Grossman; Jeremy Mony; Rose Rice – Fran Wolok & Harold Fellows

Dorothy Henrietta Sherman – Shayna, Josh, Brandon, Marni, Cailey & Mia Levine; Stacie & Seth Schinfeld

Mildred Wish – Lauren Blazofsky

Marking Yahrzeit Of:

Bertha Kifferstein – Rosann Barak & Family

## DR. FREDRIC & LINDA GOLD NEWLYWED MEZUZAH FUND

*Provides a new Mezuzah and scroll to all newlywed couples blessed by our rabbis.*

In Honor Of:

Marriage of Bruce & Vince – Rhonda & Steven Satovsky & Family

## GOODMAN FAMILY JUDAICA MUSEUM FUND

*Provides funding for the Temple Israel Judaica Museum and its programs.*

Marking Yahrzeit Of:

Joseph Globerman; Joseph Goodman; John Lutren – Teri & Mark Goodman

## ESTHER & JACK GORBACK FAMILY ARCHIVES FUND

*Supports the Temple Israel archives.*

In Honor Of:

Speedy recovery of Les Gorback – Phyllis Brickner; Sandee & Bernie Gliberman

In Memory Of:

Helen Grossinger – Esther Gorback

# TRIBUTES

## **SARAH & HAROLD GOTTlieb ENDOWMENT FUND**

*Supports two Temple Israel Cantorial Chairs and Funds the annual Stephen Gottlieb Tribute Concert.*

In Honor Of:

Bar Mitzvah of Jack Seel; Bat Mitzvah of Madison Seel; Bar Mitzvah of Benjamin Stern – Irving Friedman & Suzanne Schatz

In Memory Of:

Beloved Mother of Kathy & Rick Hayes; Cynthia Rubin – Sarah & Harold Gottlieb

## **AVIVA PEARL HERMAN MEMORIAL SHARE FUND**

*Provides support to those who have experienced miscarriage, stillbirth, or infant loss.*

In Honor Of:

Birth of Milly Reese Ferrari – Cheryl & Marc Bocknek; Merle & Ron Schwartz

In appreciation of Bryant Frank; In appreciation of Rabbi Jennifer Kaluzny; In appreciation of Lynn Quigg; In appreciation of Dr. Ed Royal; In appreciation of Ellen Schmier; In appreciation of David Tisdale – Lisa & Larry Garfinkle

In appreciation of Rabbi Jennifer Kaluzny – Rhoda Paull  
Special Birthday of Linda Kaplan; Mazel Tov to Roz & Larry Rockkind on the birth of your grandson – Merle & Ron Schwartz

In appreciation of Merle & Ron Schwartz – Martin Sherman  
Birth of Ethan Samuel Schwartz – Linda & Steve Kaplan; DeDe & Jerry Weinberg

In Memory Of:

Lindsey Finsilver – DeDe & Jerry Weinberg

Jack Friedman – Cheryl & Marc Bocknek

Fanny Herman – Markle Family; Merle & Ron Schwartz & Family; Linda & Marty Sherman

Mark Richie; Millie Wish – Merle & Ron Schwartz & Family  
Sandra Sherman – Cheryl & Marc Bocknek; Gladys Brasch; Linda & Steve Kaplan; Gail Katz; Betsy & Scott Lasser; Markle Family; Sharon Rosenzweig; Ellen & David Rothenberg; Randee Sable & Norman Sable; Marge Schwartz; Sherry & Abraham Singer; Lita Zemmoll

## **ESTELLE HURWITZ BAR/BAT MITZVAH MEMORIAL FUND**

*Assists Bar/Bat Mitzvah celebrants with their Bar/Bat Mitzvah expenses at Temple Israel.*

In Honor Of:

Bat Mitzvah of Abbey Gursten; B'nai Mitzvah of Mia Hirsch & Miles Hirsch – Shirley & Stan Halprin

In Memory Of:

Mark Richie – Karen, Todd, Erica, Laura & Jason Sachse

## **DR. MORRIS L. & SHIRLEY HUTTON YOUTH ACTIVITIES FUND**

*Provides non-budgeted goods, services and equipment to Temple Israel's High School youth activities.*

In Memory Of:

Dorothy Sherman – Shelley & Lenny Hutton

## **IWREY FAMILY SPECIAL NEEDS FUND**

*Serves the needs of the elderly and individuals with disabilities through hearing devices and transportation.*

In Memory Of:

Alec Friedman; Annie Friedman; Jerry Friedman – Joan & John Malak

## **JUNIOR YOUTH GROUP FUND**

*Supports programs for the Junior Youth Group.*

In Honor Of:

Bar Mitzvah of Benjamin Stern – Karen & Ricky Erlich

## **GLORIA & ALLEN KAFTAN SHABBAT CANDLESTICK FUND**

*Presents Shabbat candlesticks to families at the time of the naming of their children at Temple Israel.*

In Memory Of:

Marilee Helfman – Geri & Mel Kaftan

## **STEPHAN ROSENBERGER KANDEL NURSERY SCHOOL SCHOLARSHIP FUND**

*Provides scholarships for nursery and bereavement books for bereaved parents.*

In Honor Of:

Marriage of Kelly & Barry Bressler – Jackie, Mickie, Steven, Sheila, Barry, Danielle, Jeff, Jeffrey & Felicia

Speedy recovery of Sheryl Rosenfeld – Karen & Bruce Gilbert

In Memory Of:

Charles Fantich – Danielle & Jeffrey Kalt; Cindy & Mark Kandel; Esther & Harold Radin; Jackie & Larry Taffel

Caron Goldfine; Joshua Ari Marks – Cindy & Mark Kandel  
Stephan Rosenberger Kandel – Edee & Larry Sands; Sylvia Sands

Marking Yahrzeit Of:

Stephan Rosenberger Kandel – Karen & Allen Amber; Elaine Bertsch & Lillian White; Renee & Mark Feinberg

## **JOYCE KELLER & MICHAEL A. WALCH MIKVAH FUND**

*Maintains the beautiful treasure that Temple Israel has in its mikvah.*

In Memory Of:

Danny Glass – Cheryl & Marc Bocknek

## **HARRY & PHYLLIS KELLMAN MEMORIAL FUND**

*Supports senior programming at Temple Israel.*

In Memory Of:

Sadie Schlaff – Phyllis & Harvey Shapiro

## **BERTHA & HARRY KIFFERSTEIN SENIOR ADULT PROGRAMMING FUND**

*Supports senior programming at Temple Israel.*

In Honor Of:

90th Birthday of Phil Blinder – Laurie, Mark, Ben, Rebecca & Erik Blinder

In Memory Of:

Fay Beckwith; Cynthia Rubin – Marsha & Warren Kifferstein  
Carole Lipton; William Lipton – Ronda & Victor Norris

Marking Yahrzeit Of:

Harold Hass; Molly Haas; Bertha Kifferstein; Harry Kifferstein – Kifferstein Family

## **DR. DENNIS J. AND MILLY KOVAN MEMORIAL FUND**

In Honor Of:

Mazel Tov to Rozie & Bernie Friedman – Linda Kovan

In Memory Of:

Donald Dishell; Esther Mayer – Sherri & George Glassman & Family

Helen Grossinger – Phyllis Grossman & Simon Morrell

Donald Miller – Phyllis & Harvey Shapiro

Maida Zuckerman – Phyllis Grossman

## **SAM & SONIA KUDEWITZ HOLOCAUST MEMORIAL FUND**

*Provides a stipend for teen participation in the "March of the Living" trip.*

In Memory Of:

Jack Friedman – Suzan & Michael Curhan

## **HARRY & SARAH LAKER MEMORIAL CONCERT FUND**

*Provides Temple with a concert of music with Jewish content.*

In Honor Of:

60th Wedding anniversary of Estelle & Seymour Kleiman – Rita & Herb Packard

## **JOSEPH & BESSIE LEBOWSKY NURSERY SCHOOL FUND**

*Supplements toys, equipment and supplies used by the Nursery School.*

In Honor Of:

Mazel Tov to Linda & Richard Beltzman on the Bar Mitzvah of your Grandson; Special Birthday of Chickie Dwoskin; Mazel Tov to Esther & Tom Fulop on the marriage of your children; Special birthday of Myra Greenwald-Lawson; Special birthday of Lauren Lezell; Special birthday of Carolyn Marks; Bat Mitzvah of Emily Schiffer;

Mazel Tov to Louise & Steven Spector on the marriage of your children; Special birthday of Ernie Turken – Susie & Richard Lezell

In Memory Of:

Howard Arnkoff; Beloved niece of Hedy & David Blatt & Sandy Mann; Dorothy Sherman – Susie & Richard Lezell

Leonard Galper – Gayle & Arnie Goodman

Dorothy Henrietta Sherman – Marcia & Ira Auslander

Doris Winfrey – Susan & Howard Levin

## **FRAN & CAL LEVEY NURSERY SCHOOL SCHOLARSHIP FUND**

*Provides scholarships to assist in Nursery School fees.*

In Memory Of:

Cal Levey; Fran Levey – Debbie & Jeff Chutz

## **LARRY LEVIN MEMORIAL SCHOLARSHIP FUND**

*Provides a scholarship for a Temple Israel student for camp or other youth summer trips.*

In Honor Of:

Bat Mitzvah of Marli Bartholomew – Elaine & Mel Raznick  
Bat Mitzvah of Abbey Gursten – Carole Levin; Elaine & Mel Raznick

Bar Mitzvah of Benji Stern – Carole Kaftan & Dr. Barry Rubin

In Memory Of:

Fred Brown; Gloria Oleshansky; Doris Winfrey – Elaine & Mel Raznick & Family

Marilee Helfman – Arlene Pierce & Family

Sadie Schlaff – Carol Levin; Arlene Pierce & Family; Elaine & Mel Raznick

## **LIBRARY FUND**

*Supports Temple Israel libraries.*

In Honor Of:

Mazel Tov to Hedy Blatt – Lewin Family

Speedy recovery of Linda Brodsky – Debbie & Jeff Chutz

Birth of Millie Reese Ferrari – DeDe & Jerry Weinberg

Bat Mitzvah of Abbey Gursten; Birth of Noah James – Cheryl & Barry LaKritz

In appreciation of Rabbi Jennifer Kaluzny – Karen Farber & Judy Miller

In honor of the Oram & Mitchell Families – Louise Oram

Bar Mitzvah of Dylan Young – Nancy & Nathan Kolender

In Memory Of:

Jamie Daniels – Wendy & Jeff Moss & Family

Naomi Kelman; Sadie Schlaff – Nancy & Nathan Kolender

Rose Rice – Marlene & Michael Swarin

Cynthia Rubin – Sharyanne & Arnie Kollin; Adina & Allen Linden; Carol Tower

Dorothy Sherman – Wendy & Jeff Moss, Advanced Plumbing, Inc.

Leonard Trunsky – Linda Brodsky; Barbara & Robert Moresky; Rhoda Paull

Millie Wish – Lauren & Sam Bienenstock; Stefanie & Jonathan Ocker

Marking Yahrzeit Of:

Rose Kagan; Bertha Weinstein; Kenneth Weinstein – Marcie & Sheldon Weinstein

## **BERNARD E. & BERNICE S. LINDEN FINE ARTS FUND**

*Assists acquisition of fine art and art forms, and to renovate objects d'art currently in Temple Israel's possession.*

In Memory Of:

Dr. Alvin Lezell – Paula & Howard Linden

Rose Rice – Bernice Linden

Dorothy Sherman – Sharon Ambroziak; Beth & Earle Erman; Brenda & Alan Harris & Family; Celia & George Leikin; Bernice Linden; Sue, Howard & Debbie Simon; Lois & Milford Singer

Leonard Trunsky – Bernice Linden

## **ROSALYN LINER & BARRY LINER MEMORIAL FUND**

*Supports the annual Temple Israel Chanukah party.*

In Honor Of:

50th Wedding anniversary of Jill & Jules Goldman; Bar Mitzvah of Benjamin Stern – Natalie & Sidney Blatnikoff



# TRIBUTES

## In Memory Of:

Lindsey Finsilver – Judy & Kent Siegel  
Eric Kramer – Natalie & Sidney Blatnikoff  
Jeremy Mony – Susan & Howard Levin  
Cynthia Rubin – Susan & Melvin Linden  
**Marking Yahrzeit Of:**  
Rosalyn Liner – Judy & Kent Siegel

## LIPSON FAMILY MINYAN FUND

*Provides resources for Minyan expenses.*

## In Memory Of:

Fred Brown – Donna & Phil Rosen  
Jeremy Mony – Issie Goodman & Family  
**Marking Yahrzeit Of:**  
David Brevoort – Simona Seiderman  
Jakob Seiderman – Simona & Abe Seiderman

## SUSAN & RABBI HAROLD LOSSEARLY CHILDHOOD CENTER SCHOLARSHIP FUND

*To provide Early Childhood Center scholarships.*

## In Honor Of:

Mazel Tov on the engagement of Debbie Taxe & Norman Trepeck – Amy & Aaron Swedler & Family  
Speedy recovery of Bobbi Gordon – Amy & Aaron Swedler  
Birth of Elula Belle Goutman – Mary Jane & Rick Larson  
50th Wedding anniversary of Barbara & Steve Gutman – Paula & Geri Levin  
Bat Mitzvah of Shaina Lazar – Karen & Keith Simmons; Renee & Jay Wolgin  
In appreciation of Susan & Rabbi Harold Loss – Cheryl & Ron Riback  
Bar Mitzvah of Benji Stern – Charlotte Arbit

## In Memory Of:

Fred Brown – Debbie, Larry & Danny Harwood  
Jack Friedman – Lori Brooks; Wendy & Joseph Roth  
Danny Glass – Gaye & Alan Taub  
Helen Grossinger – Nancy & Nathan Kolender  
Marilee Helfman – Rosann & Donald Stashefsky  
Moussa Rafie – Carolyn & Steven Marks; Amy & Aaron Swedler & Family  
Mark Richie – Francine & Marc Wise & Family  
Ilene Goss Schuster – Judi & Jerry Kroot  
Dorothy Sherman – Talia & Ari Dolgin; Ken Korotkin; Dr. Amy Marks Swedler & Mr. Aaron Swedler; Debbie Taxe & Norman Trepeck  
Doris Winfrey – Cherie & Richard Chosid; Sherry, Aaron, Rick, Jen & Lisa Goren; Karen & Bruce Lazar & Laura Markle; Alyssa, Stephanie, Lauren & Lizzy Lovinger & Family; Sherrie & Norty Stern; Yolanda & David Tisdale  
Mildred Wish – Debbie & Larry Harwood  
Jason Zaks – Lois & Jerry Gerenraich; Dr. Amy Marks Swedler & Mr. Aaron Swedler  
**Marking Yahrzeit Of:**  
Sara Weiss – Harriet Trager

## LOUIS & LILY MARGOLIS FAMILY FUND

*Provides two awards to 7th and 8th grade students for original poetry focusing on a Jewish topic of social, ethical or religious contents.*

## In Memory Of:

Matei Hertzy – Carolyn & Milton Jacobs

## ADRIENNE MILIN BAR/BAT MITZVAH PRAYERBOOK FUND

*Provides a copy of our "Prayer Book" to each Temple Israel Bar/Bat Mitzvah celebrant.*

## In Honor Of:

In appreciation of Stacy Gittleman – Dylan Young & Family  
Bat Mitzvah of Abbey Gursten – Lauren & Marvin Daich  
65th Birthday of Michael Milin – Barbara & Jack Milin  
Bar Mitzvah of Benji Stern – Essie Stillman

## In Memory Of:

Pauline Faber – Barbara & Jack Milin

## PEGGY AND HARRY MILLER EARLY CHILDHOOD CENTER SCHOLARSHIP FUND

*To provide Early Childhood Center scholarships.*

## In Honor Of:

Bat Mitzvah of Abbey Gursten; Bar Mitzvah of Ethan Marcus – Carole & Larry Miller; Paula & Mike Shapiro  
Speedy recovery of Hermaine Raimi – Carole & Larry Miller

## In Memory Of:

Luke, Grandson of Mr. & Mrs. Lance Bartel; Dave Greenberg; Sadie Schlaff – Carole & Larry Miller  
Dorothy Sherman – Carla & Howard Schwartz  
**Marking Yahrzeit Of:**  
Ilene J. Miller; Solomon Miller – Debbie, Larry & Danny Harwood

## CHARLES A. MILLION & CAROL MILLION RAF CAMP & RABBINICAL SCHOLARSHIP FUND

*Provides a Religious School student with a camp scholarship at a UAHC summer camp and to provide funding for rabbinic and cantorial students when Temple Israel has such applicants.*

## In Memory Of:

Caron Goldfine; Beloved Mother of Dave Rubenstein & Family; Leonard Trunsky – Sharon & David Million

## BARBARA AND LAWRENCE MILLMAN FAMILY CHANUKAH FUND

*Provides holiday celebrations for those in need.*

## In Honor Of:

Wishing a Happy Chanukah to Dr. Amy & Dr. Adam Brode & Family; Wishing a Happy Chanukah to Linda Dembs; Wishing a Happy Chanukah to Fred Raznick & Madeline Dunn; Wishing a Happy Chanukah to Laurel & Steve Epstein; Bobbi & Gary Feldman; Wishing a Happy Chanukah to Marcia & Stu Felhandler; Wishing a Happy Chanukah to Shelley & Art Fine; Wishing a Happy Chanukah to Edi & Irv Gastman; Wishing a Happy Chanukah to Barbara & Barry Grant; Wishing a Happy Chanukah to Arlene Haber; Wishing a Happy Chanukah to Becky & Andrew Hayman & Family; Wishing a Happy Chanukah to Linda & Stephen Hayman; Wishing a Happy Chanukah to Gail & Bob Kaplan; Wishing a Happy Chanukah to Carolyn Karp; Wishing a Happy Chanukah to Stacy & Olivia Karp; Wishing a Happy Chanukah to Jennifer, Bill & Zachary LeGrand; Wishing a Happy Chanukah to Gail & Bruce Levine; Wishing a Happy Chanukah to Lisa & Jason Levine & Girls; Wishing a Happy Chanukah to Mindy Levine; Wishing a Happy Chanukah to Susan & Rabbi Harold Loss; Wishing a Happy Chanukah to Linda & Hank Marcus; Wishing a Happy Chanukah to Marsha & Neil Millman; Wishing a Happy Chanukah to Michelle & Drew Millman; Wishing a Happy Chanukah to Margi & Morry Oppener; Wishing a Happy Chanukah to Rachel & Josh Oppener & Family; Wishing a Happy Chanukah to Harriet & Neil Pepper & Family; Wishing a Happy Chanukah to Joan & David Raznick; Wishing a Happy Chanukah to Kim & Mike Raznick & Family; Wishing a Happy Chanukah to Maggie & Ben Raznick & Family; Wishing a Happy Chanukah to Nancy & Alan Raznick; Wishing a Happy Chanukah to Shirley & David Raznick; Wishing a Happy Chanukah to Daryle Roth; Wishing a Happy Chanukah to Iris & Richard Schloss; Wishing a Happy Chanukah to Cheryl & Craig Simon & Family; Wishing a Happy Chanukah to Judith & Ernie Simon; Wishing a Happy Chanukah to Karen & Eric Simon & Family; Wishing a Happy Chanukah to Linda & Michael Simon; Wishing a Happy Chanukah to Beverley & Dennis Wolgin; Wishing a Happy Chanukah to Wendy & Rabbi Paul Yedwab; Wishing a Happy Chanukah to Rochelle & Jerry Zabel – Barbara & Larry Millman

In honor of your retirement Barry Grant – Margi & Morry Oppener

Mazel Tov to Linda & Allan Gurvitz – Jo Ann & Tom Hornsten

Wishing a Happy Chanukah to Herman Family; Wishing a Happy Chanukah to Schwartz Family – Merle & Ron Schwartz

In appreciation of Barbara & Larry Millman – Barbara & Abe Weberman

Mazel Tov to Margi & Morry Oppener on the birth of your granddaughter – Barbara & Barry Grant

Bar Mitzvah of Joshua Peterman – Ronny & Ken Boyer

## In Memory Of:

Danny Glass – Barbara & Larry Millman  
Stevie Neuman – Shari & Stanley Finsilver

## NEWMAN FAMILY FUND FOR LIBRARY PROGRAMS & RESOURCES

*Sponsors adult and children's book clubs, nursery school story hours, and a Jewish Book Fair.*

## Marking Yahrzeit Of:

Audrey Cornfield Lacoff – Ellen Adelman

## PRAYERBOOK FUND

*Provides prayerbooks and other religious publications for Temple Israel use.*

## In Honor Of:

Danny Harwood – Debbie & Larry Harwood  
In appreciation of Dr. William Kestenber – Sharyanne & Dr. Arnold Kollin

## In Memory Of:

Fred Rapoport – Teri & Mark Goodman  
David Sulman – Nancy & Nathan Kolender

## RABBIS' DISCRETIONARY FUND

*For charitable purposes.*

## In Honor Of:

50th Wedding anniversary of Pat & Bob Baer – Emily, Miles, Hugh & Marc Camiener  
In appreciation of Rabbi Josh Bennett – Karen & Andy Coden & Family; Liz Fellows; Finerty Family; Lexi Kantor; Seel Family; Micole Wolfe & Family; Jackie & Larry Zeff  
Mazel Tov on the wedding of Carolyn & Justin – Lisa, Lou, Hadas & Sam Corey  
Bar Mitzvah of Noah Cooper – Marlene & Michael Swarin  
90th Birthday of Phil Elkus – Harriett & Morty Freedman  
50th Wedding anniversary of Jill & Jules Goldman – Ellen & Frank Wolff  
Speedy recovery of Bobbi Gordon – Roz Lax  
Birth of Elula Belle Goutman – Francine, Phil, Rachel, Jared & Jake Arbit  
Bat Mitzvah of Abbey Gursten – Ronnie & Marty Weisman  
In appreciation of Rabbi Marla Hornsten – Dolores Bloch; Ethan Marcus & Family; Micole Wolfe & Family; Dylan Young & Family; Jackie & Larry Zeff  
70th Birthday of David Jaffa – Ricki & David Elbinger  
In appreciation of Rabbi Jennifer Kaluzny – Sherri Michaels; Micole Wolfe & Family  
In appreciation of Rabbi Harold Loss – Julie & Billy Stern  
In appreciation of Cantor Neil Michaels – Micole Wolfe & Family  
Mazel Tov to Rabbi & Mrs. Jeremy Pappas on the birth of your son Yoni Chaim – Norma Sugar & Bill McNabb

In appreciation of Lynn Quigg; In appreciation of Ed Royal; In appreciation of Ellen Schmier; In appreciation of David Tisdale – Sherri Michaels

In appreciation of The Minyan Group – Sheila Abrams  
55th Wedding anniversary of Cydnie & Jim Reich – Joan & Jeff Clime

Special Birthday of Doreen Sabin – Nancy & Cecil Raitt  
Speedy recovery of Liz Shergin – Susie & Jerry Gold  
Bar Mitzvah of Benji Stern – Francine, Phil, Rachel, Jared & Jake Arbit; Cheryl & Marc Bocknek; Barbara & Raymond Horenstein; Tracey, Jeff, Jared, Brett & Cami Katzen; Linda & Al Katzen; Risa & Brian Kirschner & Family; Diane Okun & Richard Braudo; Gail Reichstein; Debbie Rottman  
In appreciation of Temple Israel Clergy – Linda & Murray Feldman; Ruth & Edward Lerchin; Cydnie & James Reich; Dorit & Steven Silver

In appreciation of Temple Israel Clergy & Staff – Judy Robinson

In honor of Allison Paige VanDerAue – Matthew VanDerAue  
In appreciation of Rabbi Paul Yedwab – Matthew VanDerAue; Jackie & Larry Zeff

Bar Mitzvah of Dylan Young – Barbara & Larry Dubb; Harriett & Morty Freedman; Ronnie & Marty Weisman

# TRIBUTES

## In Memory Of:

Fay Beckwith – Barbara & Larry Dubb  
Beloved Mother of Joann & Michael Bellet – Maxcine & Stewart Sherman  
Joan Braun – Ida & Henry Glass  
Don Dishell; James Ruby; June Snider – Eileen & Stuart Eisenberg  
Gerald Emmer – Ellen & Ted Anderson; Alice & Michael Baker; The Boeing Company, El Segundo-California; Jan & Bob Emmer; Lois & Jerry Gerenraich; Betty Gilbert; Margo & Jerry Kline; Bruce Lamm; Celia & George Leikin; Hillary & Jordan Levin; Nancy & Roger Nelson; Georgina & William Palmer; Kathy Palmer & Doris Hodgkins; Dee Ann Emmer & Steve Roland  
Lindsey Finsilver – Roberta & Emery Grossinger; Lynne & Jeffrey Obron & Family; Merle & Charles Wolfson & Family  
Jack Friedman – Caryn Jaeger; Lynne & Jeffrey Obron; Merle & Charles Wolfson & Family  
Leonard Galper – Lillian Meyers & Family; Yolanda & David Tisdale  
Sandy Gelman – Rita & Paul Sherr  
Daniel Glass – Ida & Henry Glass; Susan King; Natalie & Bill Newman; Howard Rosen  
Saul Grossman – Merle & Charles Wolfson & Family  
Jerry Harris – Harriett & Morty Freedman  
Barbara Kaye – Norma Sugar & Bill McNabb  
Donald Miller – Nancy & Cecil Raitt; Barbara & Mickey Wenokur  
Irwin Newberg – Paula & Howard Linden  
Rose Rice – Lillian Meyers & Family  
Mark Richie – Mary Jane & Rick Larson; Nancy & Howard Luckoff; Laurie & Michael Nedleman; Linda & Richard Wolok  
Donda Rossman – Melvin Barnett  
Dorothy Henrietta Sherman – Linda & Chuck Goss; Debbie Taxe & Norman Trepeck; Margo & Cy Weiner  
Doris Evelyn Winfrey – Libby & Dave Kaplan  
**Marking Yahrzeit Of:**  
Ryan Kay – Nancy Firestone

## FAYE & DON REIFLER MEMORIAL YOUTH TRIP SCHOLARSHIP FUND

*Provides scholarships to Temple Israel youth group members to attend youth trips.*

### In Honor Of:

95th Birthday of Clare Chait – Sharon, Barry, Drew, Lauren & Carly Rosenberg  
Birth of Julia – Linda & Murray Goldenberg  
1st Birthday of Farrah Reifler; 14th Birthday of Madi Reifler; 5th Birthday of Marcus Reifler; 15th Birthday of Jack Turken – Sharon & Barry Rosenberg & Family

### In Memory Of:

Jack Friedman – Lynn & Jeff Aleman; Elisa & Don Dreyfuss; Linda & Murray Goldenberg; Jackie & Myron Milgrom; Ann & David Rosenberg & Family; Sharon, Barry, Drew, Lauren & Carly Rosenberg; Jill & Greg Rostker; Vivian & Michael Sanfield; Mickey Shapiro; Lynda & Douglas Thal; Heather, Steve, Brooke, Hannah & Julia; Shelley & Daniel  
Joe Latham – Amy, J.J., Madison & Morgan Reifler; Sharon & Barry Rosenberg & Family  
Jeremy Mony – Dorit & Stephen Silver

## GEORGE & ANNE ROTH YOUTH EDUCATION & AWARENESS FUND

*Educates our Religious School students through programming.*

### In Memory Of:

Dorothy Sherman – Daryle Roth, Daniel & Jonathan

## LYNN & HARVEY RUBIN SOCIAL ACTION FUND

### In Honor Of:

Speedy recovery of Bruce Bolton; Mazel Tov to Mr. & Mrs. Larry Gursten on the Bat Mitzvah of your Granddaughter Abbey; Mazel Tov to Susie & Jeff LaKritz on the birth of your Grandchildren; Mazel Tov to Mr. & Mrs. Eric Lutz on the Bar Mitzvah of your Grandson Carter; Mazel Tov to Rhonda & Steve Satovsky on the birth of your grandson Leo – Lynn & Harvey Rubin  
Marriage of Lauren & Adam Rubin – Cheryl & Barry LaKritz; Gail & Don Lansky; Laurie & Steven Lewin; Paula & Mike Shapiro

## In Memory Of:

Allan Cohen; Lindsey Finsilver; Sadie Schlaff; Dorothy Sherman – Lynn & Harvey Rubin  
James Ruby – Lois & Alvin Rubin

## SAMSON FAMILY MINYAN FUND

*Assists in the expenses of the daily Minyan.*

### In Honor Of:

Mazel Tov to Marjie & Al Benson on the birth of Penelope – Nancy & Rick Rosenthal  
In appreciation of Emily & Merrick Goodman – Issie Goodman

### In Memory Of:

Esther Mayer – Linda & Murray Goldenberg  
Dr. LeRoy Neumann – Debbie Rottman  
Iris Rosenberg; Julie Silverstein Vinik – Debbie Rottman  
Dorothy Sherman – Rochelle & Bill Elson  
Lloyd Strausz – Sharon Stern  
Leonard Trunsky – Sheila Eisenberg; Debbie Rottman; Barbara & Norman Samson; Simona & Abe Seiderman  
Jason Phillip Zaks – Barbara & Norman Samson  
**Marking Yahrzeit Of:**  
Leon Firestone; Ruth Sherman – Nancy Firestone  
Lynne Goodman – Issie Goodman & Family  
Heather Brevoort Heath – Simona & Abe Seiderman

## SCHELBERG FAMILY SHABBAT BIRTHDAY BOOK FUND

*Provides children's books for the Shabbat Birthday Program.*

### In Honor Of:

Birth of Lucy Reva Schelberg – Linda Brodsky; Glenda & Bob Lask

## SUSAN SHANKER CAMP SCHOLARSHIP FUND

*Provides a UAHC camp scholarship to a Religious School student.*

### In Honor Of:

Bat Mitzvah of Alexis Forman – Sharie & Albert Gladner  
Special Birthday of Janis Sterling – Ellen & Marc Whitefield  
Bar Mitzvah of Benji Hornsten Stern – Schelberg Family  
**Marking Yahrzeit Of:**  
Carol Gell; Ted Gell – Nancy Gell

## EVAN SHAPIRO FUND FOR THE FIGHT AGAINST CANCER

*Provides cancer awareness educational programs at Temple Israel.*

### In Honor Of:

Speedy recovery & good health to Bill Winshall – Essie Stillman

## DEBRA & JOSEPH ז"ל SILVER L'DOR V'DOR, GENERATION TO GENERATION FAMILY GARDEN FUND

*Perpetuates the care and maintenance of Temple Israel's L'Dor V'Dor, Generation to Generation, Family Gardens.*

### In Memory Of:

Leonard Galper – David Silver & Debbie Silver-Heller

## KOLE-OTIS-SKLAR FAMILIES EARLY EDUCATION FUND IN MEMORY OF SHEILA OTIS SKLAR, ROSE WEIDER OTIS & IRVIN OTIS

*Supports Nursery (ECC) Tot Shabbat picnic programs.*

### In Memory Of:

Paul Sholem Amber; Sylvia Weider Amber – Betty Amber & Rhonda Amber  
Daniel Glass – Gail Cohen

## ROBERT SOSNICK FAMILY LIFE CENTER ENDOWMENT

*Supports Temple Israel's Family Life Center.*

### In Honor Of:

Birth of Milly Reese Ferrari – Susie & David Bloom & Family  
**In Memory Of:**  
Elaine Beneson – Janice & Arnie Tracht  
Paul Milgrim – SuSu Sosnick

## STARK FAMILY FUND

*Provides family programming.*

### In Honor Of:

Special Birthday of Sandy Stark – Rabbi Eric Stark

### In Memory Of:

Caron Goldfine – Sandy & Jay Stark

## DAVID ARTHUR STULBERG MEMORIAL FUND

*Funds senior programming at Temple Israel.*

### In Honor Of:

Happy Chanukah to Carolyn & Steven Marks – Nancy & Ken Stocker

## ALICIA JOY TECHNER MEMORIAL FUND

*Provides an annual parenting conference.*

### In Memory Of:

Jack Friedman – Doug Zack

## TEMPLE ISRAEL BROTHERHOOD FUND

*Supports Temple Israel Brotherhood programming.*

### In Honor Of:

In appreciation of George Lucaj & Staff – Temple Israel Brotherhood

### In Memory Of:

Charles Fantich – Margie & Bob Franklin  
Caron Goldfine – Shellie & Steven Achtman; Margie & Bob Franklin; Ruth & Jim Grey; Nancy & Jim Jonas; Kerry & Brian Karbel; Temple Israel Brotherhood  
Barbara Kaye; Miriam Yetta Rubenstein – Shellie & Steven Achtman  
Leonard Trunsky – Ruth & Jim Grey; Temple Israel Brotherhood

## TEMPLE ISRAEL SISTERHOOD FUND

*Supports Temple Israel Sisterhood programming.*

### In Honor Of:

Birth of Milly Reese Ferrari – Temple Israel Sisterhood  
70th Birthday of David Jaffa – Wendy & Larry Kohlenberg  
Bat Mitzvah of Emily Schiffer; Bar Mitzvah of Benji Stern – Temple Israel Sisterhood

### In Memory Of:

Caron Goldfine – Camille, George & Alyssa McMillan; Temple Israel Sisterhood  
Joseph Rose; Millie Wish – Shellie & Steve Achtman  
Bill Shore – Wendy & Larry Kohlenberg

## DOROTHY THAL SUMMER CAMP FUND

*An award to a Temple Israel youth wishing to participate in a Jewish camp program.*

### In Honor Of:

Bar Mitzvah of Benji Stern – Susanne Zwiren

### In Memory Of:

Millie Wish – Douglas & Lynda Thal

## THE TOBIAS FUND

*Leadership opportunities for Temple members.*

### In Honor Of:

Speedy recovery of Bobbi Gordon – Janis & Harvey Eisman  
Birth of Elula Belle Goutman – Essie Stillman  
Special Birthday of Sherri Tobias – Sherrie & Norty Stern

### In Memory Of:

Sadie Schlaff – Laurie Green

## LEONARD & ROSLYN TRUNSKY COLLEGE SCHOLARSHIP FUND

*Supports scholarship funding.*

### In Memory Of:

Leonard Trunsky – Florence Goldman; Sheila & Dan Schiffer; Kathie, Jeffrey & Ashley Schwartz & Sandy Schwartz; Sherrie & Norty Stern; Yolanda & David Tisdale; Christy Underwood & Family

## JACKIE UNATIN MEMORIAL CHANUKAH FUND

*Provides holiday celebrations for those in need.*

### In Honor Of:

Wishing a Happy Chanukah to Amy & Cary Alpert; Wishing a Happy Chanukah to Isaac Brickner; Wishing a Happy Chanukah to Emily & Jake Gatof; Wishing a Happy Chanukah to Sara & Grant Grays;



# TRIBUTES

Wishing a Happy Chanukah to Blair & Ari Stern; Wishing a Happy Chanukah to Bryce Wiatrak; Wishing a Happy Chanukah to Kiera Wiatrak; Wishing a Happy Chanukah to Perri Wiatrak – Phyllis Brickner  
Special Birthday of Chickie Dwoskin; Birth of Spencer Nathan; Special Birthday of Robbie Unatin – Arlene & Rick Agree

Special birthday of Linda Gurvitz – Lorry & Jerry Cooper; Mickey & Cal Mackey

**In Memory Of:**

Lindsey Finsilver – Arlene & Rick Agree

Florence Friedman; Evelyn Rosen – Marci & Paul Zeman

**Marking Yahrzeit Of:**

William Lite – Linda Gurvitz

## FRAN VICTOR ISRAEL EDUCATION FUND

*To fund Israel related education and activities.*

**In Memory Of:**

Caron Goldfine – Fran Victor

## WEINSTEIN ISRAEL TRIP SCHOLARSHIP FUND

*Grants a scholarship to a Temple Israel student for travel to Israel.*

**In Honor Of:**

105th Birthday of Betty Weinstein; Special Birthday of Eleanor Weinstein; 50th Wedding anniversary of Eleanor & Marvin Weinstein – Judith & Sydney Weinstein

**In Memory Of:**

Joshua Marks – Judith & Sydney Weinstein

## THE WELL

**In Honor Of:**

Birth of Micah Rashi Horwitz – Randi & Stuart Sakwa; Amy & Aaron Swedler & Family; Carolyn & Steven Marks  
Mazel Tov on the marriage of Julie & Ryan – Randi & Stuart Sakwa

## WENDY & RABBI PAUL YEDWAB YOUTH ENRICHMENT FUND

*To support a variety of youth enrichment activities offered or sponsored by Temple Israel.*

**In Honor Of:**

In appreciation of Rabbi Paul Yedwab – Candy Cuttner; Schelberg Family

In Appreciation of Wendy & Rabbi Paul Yedwab – Rose & Steve Sallen & Family

## SUSAN & HANLEY YORKE SOCIAL ACTION FUND

*Finances social action projects of Temple Israel.*

**In Memory Of:**

Lindsey Beth Jacobs Finsilver – Susan Yorke

Jeremy Mony – Marsha & Sheldon Adelson

## YOUTH ISRAEL PILGRIMAGE FUND

*Supports youth scholarships for Temple Israel sponsored trips to Israel.*

**In Honor Of:**

In appreciation of Rabbi Josh Bennett – Nicole, Ted, Chloe & Carter Wagner

Bat Mitzvah of Abbey Jordan Gursten – Frieda Langnas; Laurie & Steven Lewin

Special Birthday of Helen Lerner – Marilyn & Harvey Saperstein  
Bar Mitzvah of Ethan Marcus – Arlene Stern

Bar Mitzvah of Benji Stern – Lynn & Jeff Aleman; Ruth Beresh; Lois & Jerry Gerenraich; Shirley & Stan Halprin; Jo Ann & Tom Hornsten; Carol & Jerry Israel; Carolyn & Steven Marks; Simona & Abe Seiderman; Yolanda & David Tisdale

In appreciation of Sherrie & Norty Stern – Rhoda Paull  
Mazel Tov on the marriages of Laura & Anson, Hannah & Sam – Randi & Stuart Sakwa

**In Memory Of:**

Fay Beckwith – Barbara & Howard Leshman

Lindsey Beth Jacobs Finsilver – Jill & Jules Goldman; Sherrie & Danny Singer

Jack Friedman; Leonard Galper – Rosalie & George Schwartz  
Cynthia Rubin – Bayle & Erwin Gutenberg

**Marking Yahrzeit Of:**

Oscar Goldberg – Jeanette & Michael Wertheimer

## JUDITH & RICHARD ZATKIN YOUTH FUND

*Provides resources for Youth Group programs.*

**In Memory Of:**

Barbara Kaye – Lynne & Don Apel & Family

## FUNDS BEING FORMED

## DONNA & ALAN ASP INTERFAITH CAMP SCHOLARSHIP FUND

**In Memory Of:**

Danny Zemon – Elizabeth Zemon

## AARON FENTON MEMORIAL FUND

**In Honor Of:**

Speedy recovery of Kyle Fenton – Cindy & Fred Leff

**In Memory Of:**

Lindsey Finsilver – Jodi & Justin Trivax

Jack Friedman – Sheila & Mark Fenton; Susan & Michael Solarz

Sandi Pallan; David Schlang; Harry Tattleman – Sheila & Mark Fenton

## RICHARD GERSHENSON MEMORIAL FUND

**In Memory Of:**

Lindsey Finsilver – Hilary Mellin & Joel Gershenson

Alan Perlmutter – Hilary Mellin

## RICHARD MONASH CARING FUND

**In Honor Of:**

Speedy recovery of Dennis Morse – Elayne Sharon  
Mazel Tov to Paula & Mike Shapiro on the Bat Mitzvah of your Granddaughter Andy – Adrienne & Jerry Weinstein

**In Memory Of:**

Jack Friedman – Julie & Billy Stern & Family

Caron Goldfine – Phyllis & Gary Levitt; Margi & Harry Weinhaus

Rick Monash – Sylvia & Michael Gotlib

Cynthia Rubin – Elissa & Danny Kline

Dorothy Sherman – Julie & Dennis Chaiken

Leonard Trunsky – Margi & Harry Weinhaus

Sidney Weinberg – Linda & Henry Becek; Donna & Jack Belen; Barbara & Allan Ben; Julie & Dennis Chaiken; Phyllis & Ron Chess; Pearl Coffman; Lindsay & Ryan Dembs; Mona & Mark Dembs; Jeannie & Howard Dubin; Robin & Paul Ehrmann; Shelley & Arthur Fine; Carol & Ross Fridson; Judy Fridson; Susie & Harold Gayer; Karen & Bruce Gilbert; Sylvia Gotlib; Jenica & Jeff Gunsberg; Barbara & Raymond Horenstein; Marilyn, Matthew & Missy Kent; Julie & Michael Kittredge; Elissa & Danny Kline; Nancy Kushkin; Cheryl & Barry LaKritz; Nancy & Harvey Lash; Kati & Neil Lefton & Family; Barbara & Howard Leshman; Roz & Leon Levine; Phyllis & Gary Levitt; Dianne & John Politzer; Cheryl & Ron Riback; Ellen & David Rothenberg; Barbara & Norman Samson; Ruthie & Marty Seltzer; Elayne Sharon; Sherry & Abraham Singer; Kathy & Bruce Tobin; Margi & Harry Weinhaus; Adrienne & Jerry Weinstein; Andi & Larry Wolfe

Millie Wish – Barbara & Howard Leshman

Millie Wish – Barbara & Howard Leshman

Millie Wish – Barbara & Howard Leshman

Millie Wish – Barbara & Howard Leshman

Millie Wish – Barbara & Howard Leshman

Millie Wish – Barbara & Howard Leshman

Millie Wish – Barbara & Howard Leshman

Millie Wish – Barbara & Howard Leshman

Millie Wish – Barbara & Howard Leshman

Millie Wish – Barbara & Howard Leshman

Millie Wish – Barbara & Howard Leshman

Millie Wish – Barbara & Howard Leshman

Millie Wish – Barbara & Howard Leshman

Millie Wish – Barbara & Howard Leshman

Millie Wish – Barbara & Howard Leshman

Millie Wish – Barbara & Howard Leshman

Millie Wish – Barbara & Howard Leshman

Millie Wish – Barbara & Howard Leshman

Millie Wish – Barbara & Howard Leshman

## REGENE & LESLIE SCHMIER CONCERT SERIES ENDOWMENT FUND

**In Honor Of:**

Mazel Tov to Lisa & Andy Barbas on the engagement of your son – Marci & Marvin Shulman

In appreciation of Ellen Schmier – Karen Farber & Judy Miller; Rhoda Paull

Special Birthday of Lou Soverinsky – Ellen & Marc Whitefield  
In appreciation of Temple Israel's "Regene & Leslie Schmier Concert Series" – Marilynn & Arnold Levin

**In Memory Of:**

Lindsey Finsilver – Evelyn & Lou Grant; Dana & Joel Ishbia; Rhoda Paull

Gale Freidenreich; Esther Kurtz; Mildred Wish – Lisa & Bruce Goel

Steven Neuman – Beverly Stewart & Irwin Marvald  
Gloria Oleshansky – Dana & Joel Ishbia

Regene Schmier – Marcia & Morry Bednarsh; Barbara & Douglas Bloom; Nancy & Phillip Bortman & Family; Linda Brodsky; Linda & Stan Burech; Evelyn Burton; Cathy & Steven Cohn; The Robert & Bess Cook Foundation; Ilene & Gary Damrauer; Peggy & Marvin Damrauer; Suzanne & Jeff Deutch; Karen Dietrich; Robin & Robert Elkus; Judy Miller & Karen & Larry Farber; Dr. Karen Bolak & Frances Finsilver; Joan & Gerry Glassberg; Miriam & Kal Goren; Pamela & David Haron; Elaine & Alan Herbst; Barbara & Michael Horowitz; Dana & Joel Ishbia; Linda & Steve Jacobson; Denise, Warren & Annie Kaplan; Jill & Michael Koidin; Joanne & Robert Kraft; Sheryl & Jeff Levin; Maureen & Bruce Levine; Bob Levy; Sherri & Eddie Lumberg; Lori Lutz; Maura Cook & Allen Michale; Sherry Mitteldorf; JP Morgan Team; Marianne & Neal Robin; Jo Rosen & Family; Julie & J. Adam Rothstein; Becky & Gary Sakwa; Joan & Neil Satovsky; Sheila & Dan Schiffer; Sara & Dan Schnaar; Pam Nadler & Mark Sickles; Ellin & Steve Skapik; Sherrie & Norty Stern; Sherry & Danny Stewart; Julie & Steve Strickland; Ruth Podolsky Tobias; Fran Victor; Monique & Jeffrey Weiss

Regene Schmier – Marcia & Morry Bednarsh; Barbara & Douglas Bloom; Nancy & Phillip Bortman & Family; Linda Brodsky; Linda & Stan Burech; Evelyn Burton; Cathy & Steven Cohn; The Robert & Bess Cook Foundation; Ilene & Gary Damrauer; Peggy & Marvin Damrauer; Suzanne & Jeff Deutch; Karen Dietrich; Robin & Robert Elkus; Judy Miller & Karen & Larry Farber; Dr. Karen Bolak & Frances Finsilver; Joan & Gerry Glassberg; Miriam & Kal Goren; Pamela & David Haron; Elaine & Alan Herbst; Barbara & Michael Horowitz; Dana & Joel Ishbia; Linda & Steve Jacobson; Denise, Warren & Annie Kaplan; Jill & Michael Koidin; Joanne & Robert Kraft; Sheryl & Jeff Levin; Maureen & Bruce Levine; Bob Levy; Sherri & Eddie Lumberg; Lori Lutz; Maura Cook & Allen Michale; Sherry Mitteldorf; JP Morgan Team; Marianne & Neal Robin; Jo Rosen & Family; Julie & J. Adam Rothstein; Becky & Gary Sakwa; Joan & Neil Satovsky; Sheila & Dan Schiffer; Sara & Dan Schnaar; Pam Nadler & Mark Sickles; Ellin & Steve Skapik; Sherrie & Norty Stern; Sherry & Danny Stewart; Julie & Steve Strickland; Ruth Podolsky Tobias; Fran Victor; Monique & Jeffrey Weiss

Regene Schmier – Marcia & Morry Bednarsh; Barbara & Douglas Bloom; Nancy & Phillip Bortman & Family; Linda Brodsky; Linda & Stan Burech; Evelyn Burton; Cathy & Steven Cohn; The Robert & Bess Cook Foundation; Ilene & Gary Damrauer; Peggy & Marvin Damrauer; Suzanne & Jeff Deutch; Karen Dietrich; Robin & Robert Elkus; Judy Miller & Karen & Larry Farber; Dr. Karen Bolak & Frances Finsilver; Joan & Gerry Glassberg; Miriam & Kal Goren; Pamela & David Haron; Elaine & Alan Herbst; Barbara & Michael Horowitz; Dana & Joel Ishbia; Linda & Steve Jacobson; Denise, Warren & Annie Kaplan; Jill & Michael Koidin; Joanne & Robert Kraft; Sheryl & Jeff Levin; Maureen & Bruce Levine; Bob Levy; Sherri & Eddie Lumberg; Lori Lutz; Maura Cook & Allen Michale; Sherry Mitteldorf; JP Morgan Team; Marianne & Neal Robin; Jo Rosen & Family; Julie & J. Adam Rothstein; Becky & Gary Sakwa; Joan & Neil Satovsky; Sheila & Dan Schiffer; Sara & Dan Schnaar; Pam Nadler & Mark Sickles; Ellin & Steve Skapik; Sherrie & Norty Stern; Sherry & Danny Stewart; Julie & Steve Strickland; Ruth Podolsky Tobias; Fran Victor; Monique & Jeffrey Weiss

Regene Schmier – Marcia & Morry Bednarsh; Barbara & Douglas Bloom; Nancy & Phillip Bortman & Family; Linda Brodsky; Linda & Stan Burech; Evelyn Burton; Cathy & Steven Cohn; The Robert & Bess Cook Foundation; Ilene & Gary Damrauer; Peggy & Marvin Damrauer; Suzanne & Jeff Deutch; Karen Dietrich; Robin & Robert Elkus; Judy Miller & Karen & Larry Farber; Dr. Karen Bolak & Frances Finsilver; Joan & Gerry Glassberg; Miriam & Kal Goren; Pamela & David Haron; Elaine & Alan Herbst; Barbara & Michael Horowitz; Dana & Joel Ishbia; Linda & Steve Jacobson; Denise, Warren & Annie Kaplan; Jill & Michael Koidin; Joanne & Robert Kraft; Sheryl & Jeff Levin; Maureen & Bruce Levine; Bob Levy; Sherri & Eddie Lumberg; Lori Lutz; Maura Cook & Allen Michale; Sherry Mitteldorf; JP Morgan Team; Marianne & Neal Robin; Jo Rosen & Family; Julie & J. Adam Rothstein; Becky & Gary Sakwa; Joan & Neil Satovsky; Sheila & Dan Schiffer; Sara & Dan Schnaar; Pam Nadler & Mark Sickles; Ellin & Steve Skapik; Sherrie & Norty Stern; Sherry & Danny Stewart; Julie & Steve Strickland; Ruth Podolsky Tobias; Fran Victor; Monique & Jeffrey Weiss

Regene Schmier – Marcia & Morry Bednarsh; Barbara & Douglas Bloom; Nancy & Phillip Bortman & Family; Linda Brodsky; Linda & Stan Burech; Evelyn Burton; Cathy & Steven Cohn; The Robert & Bess Cook Foundation; Ilene & Gary Damrauer; Peggy & Marvin Damrauer; Suzanne & Jeff Deutch; Karen Dietrich; Robin & Robert Elkus; Judy Miller & Karen & Larry Farber; Dr. Karen Bolak & Frances Finsilver; Joan & Gerry Glassberg; Miriam & Kal Goren; Pamela & David Haron; Elaine & Alan Herbst; Barbara & Michael Horowitz; Dana & Joel Ishbia; Linda & Steve Jacobson; Denise, Warren & Annie Kaplan; Jill & Michael Koidin; Joanne & Robert Kraft; Sheryl & Jeff Levin; Maureen & Bruce Levine; Bob Levy; Sherri & Eddie Lumberg; Lori Lutz; Maura Cook & Allen Michale; Sherry Mitteldorf; JP Morgan Team; Marianne & Neal Robin; Jo Rosen & Family; Julie & J. Adam Rothstein; Becky & Gary Sakwa; Joan & Neil Satovsky; Sheila & Dan Schiffer; Sara & Dan Schnaar; Pam Nadler & Mark Sickles; Ellin & Steve Skapik; Sherrie & Norty Stern; Sherry & Danny Stewart; Julie & Steve Strickland; Ruth Podolsky Tobias; Fran Victor; Monique & Jeffrey Weiss

Regene Schmier – Marcia & Morry Bednarsh; Barbara & Douglas Bloom; Nancy & Phillip Bortman & Family; Linda Brodsky; Linda & Stan Burech; Evelyn Burton; Cathy & Steven Cohn; The Robert & Bess Cook Foundation; Ilene & Gary Damrauer; Peggy & Marvin Damrauer; Suzanne & Jeff Deutch; Karen Dietrich; Robin & Robert Elkus; Judy Miller & Karen & Larry Farber; Dr. Karen Bolak & Frances Finsilver; Joan & Gerry Glassberg; Miriam & Kal Goren; Pamela & David Haron; Elaine & Alan Herbst; Barbara & Michael Horowitz; Dana & Joel Ishbia; Linda & Steve Jacobson; Denise, Warren & Annie Kaplan; Jill & Michael Koidin; Joanne & Robert Kraft; Sheryl & Jeff Levin; Maureen & Bruce Levine; Bob Levy; Sherri & Eddie Lumberg; Lori Lutz; Maura Cook & Allen Michale; Sherry Mitteldorf; JP Morgan Team; Marianne & Neal Robin; Jo Rosen & Family; Julie & J. Adam Rothstein; Becky & Gary Sakwa; Joan & Neil Satovsky; Sheila & Dan Schiffer; Sara & Dan Schnaar; Pam Nadler & Mark Sickles; Ellin & Steve Skapik; Sherrie & Norty Stern; Sherry & Danny Stewart; Julie & Steve Strickland; Ruth Podolsky Tobias; Fran Victor; Monique & Jeffrey Weiss

Regene Schmier – Marcia & Morry Bednarsh; Barbara & Douglas Bloom; Nancy & Phillip Bortman & Family; Linda Brodsky; Linda & Stan Burech; Evelyn Burton; Cathy & Steven Cohn; The Robert & Bess Cook Foundation; Ilene & Gary Damrauer; Peggy & Marvin Damrauer; Suzanne & Jeff Deutch; Karen Dietrich; Robin & Robert Elkus; Judy Miller & Karen & Larry Farber; Dr. Karen Bolak & Frances Finsilver; Joan & Gerry Glassberg; Miriam & Kal Goren; Pamela & David Haron; Elaine & Alan Herbst; Barbara & Michael Horowitz; Dana & Joel Ishbia; Linda & Steve Jacobson; Denise, Warren & Annie Kaplan; Jill & Michael Koidin; Joanne & Robert Kraft; Sheryl & Jeff Levin; Maureen & Bruce Levine; Bob Levy; Sherri & Eddie Lumberg; Lori Lutz; Maura Cook & Allen Michale; Sherry Mitteldorf; JP Morgan Team; Marianne & Neal Robin; Jo Rosen & Family; Julie & J. Adam Rothstein; Becky & Gary Sakwa; Joan & Neil Satovsky; Sheila & Dan Schiffer; Sara & Dan Schnaar; Pam Nadler & Mark Sickles; Ellin & Steve Skapik; Sherrie & Norty Stern; Sherry & Danny Stewart; Julie & Steve Strickland; Ruth Podolsky Tobias; Fran Victor; Monique & Jeffrey Weiss

Regene Schmier – Marcia & Morry Bednarsh; Barbara & Douglas Bloom; Nancy & Phillip Bortman & Family; Linda Brodsky; Linda & Stan Burech; Evelyn Burton; Cathy & Steven Cohn; The Robert & Bess Cook Foundation; Ilene & Gary Damrauer; Peggy & Marvin Damrauer; Suzanne & Jeff Deutch; Karen Dietrich; Robin & Robert Elkus; Judy Miller & Karen & Larry Farber; Dr. Karen Bolak & Frances Finsilver; Joan & Gerry Glassberg; Miriam & Kal Goren; Pamela & David Haron; Elaine & Alan Herbst; Barbara & Michael Horowitz; Dana & Joel Ishbia; Linda & Steve Jacobson; Denise, Warren & Annie Kaplan; Jill & Michael Koidin; Joanne & Robert Kraft; Sheryl & Jeff Levin; Maureen & Bruce Levine; Bob Levy; Sherri & Eddie Lumberg; Lori Lutz; Maura Cook & Allen Michale; Sherry Mitteldorf; JP Morgan Team; Marianne & Neal Robin; Jo Rosen & Family; Julie & J. Adam Rothstein; Becky & Gary Sakwa; Joan & Neil Satovsky; Sheila & Dan Schiffer; Sara & Dan Schnaar; Pam Nadler & Mark Sickles; Ellin & Steve Skapik; Sherrie & Norty Stern; Sherry & Danny Stewart; Julie & Steve Strickland; Ruth Podolsky Tobias; Fran Victor; Monique & Jeffrey Weiss

Regene Schmier – Marcia & Morry Bednarsh; Barbara & Douglas Bloom; Nancy & Phillip Bortman & Family; Linda Brodsky; Linda & Stan Burech; Evelyn Burton; Cathy & Steven Cohn; The Robert & Bess Cook Foundation; Ilene & Gary Damrauer; Peggy & Marvin Damrauer; Suzanne & Jeff Deutch; Karen Dietrich; Robin & Robert Elkus; Judy Miller & Karen & Larry Farber; Dr. Karen Bolak & Frances Finsilver; Joan & Gerry Glassberg; Miriam & Kal Goren; Pamela & David Haron; Elaine & Alan Herbst; Barbara & Michael Horowitz; Dana & Joel Ishbia; Linda & Steve Jacobson; Denise, Warren & Annie Kaplan; Jill & Michael Koidin; Joanne & Robert Kraft; Sheryl & Jeff Levin; Maureen & Bruce Levine; Bob Levy; Sherri & Eddie Lumberg; Lori Lutz; Maura Cook & Allen Michale; Sherry Mitteldorf; JP Morgan Team; Marianne & Neal Robin; Jo Rosen & Family; Julie & J. Adam Rothstein; Becky & Gary Sakwa; Joan & Neil Satovsky; Sheila & Dan Schiffer; Sara & Dan Schnaar; Pam Nadler & Mark Sickles; Ellin & Steve Skapik; Sherrie & Norty Stern; Sherry & Danny Stewart; Julie & Steve Strickland; Ruth Podolsky Tobias; Fran Victor; Monique & Jeffrey Weiss

Regene Schmier – Marcia & Morry Bednarsh; Barbara & Douglas Bloom; Nancy & Phillip Bortman & Family; Linda Brodsky; Linda & Stan Burech; Evelyn Burton; Cathy & Steven Cohn; The Robert & Bess Cook Foundation; Ilene & Gary Damrauer; Peggy & Marvin Damrauer; Suzanne & Jeff Deutch; Karen Dietrich; Robin & Robert Elkus; Judy Miller & Karen & Larry Farber; Dr. Karen Bolak & Frances Finsilver; Joan & Gerry Glassberg; Miriam & Kal Goren; Pamela & David Haron; Elaine & Alan Herbst; Barbara & Michael Horowitz; Dana & Joel Ishbia; Linda & Steve Jacobson; Denise, Warren & Annie Kaplan; Jill & Michael Koidin; Joanne & Robert Kraft; Sheryl & Jeff Levin; Maureen & Bruce Levine; Bob Levy; Sherri & Eddie Lumberg; Lori Lutz; Maura Cook & Allen Michale; Sherry Mitteldorf; JP Morgan Team; Marianne & Neal Robin; Jo Rosen & Family; Julie & J. Adam Rothstein; Becky & Gary Sakwa; Joan & Neil Satovsky; Sheila & Dan Schiffer; Sara & Dan Schnaar; Pam Nadler & Mark Sickles; Ellin & Steve Skapik; Sherrie & Norty Stern; Sherry & Danny Stewart; Julie & Steve Strickland; Ruth Podolsky Tobias; Fran Victor; Monique & Jeffrey Weiss

Regene Schmier – Marcia & Morry Bednarsh; Barbara & Douglas Bloom; Nancy & Phillip Bortman & Family; Linda Brodsky; Linda & Stan Burech; Evelyn Burton; Cathy & Steven Cohn; The Robert & Bess Cook Foundation; Ilene & Gary Damrauer; Peggy & Marvin Damrauer; Suzanne & Jeff Deutch; Karen Dietrich; Robin & Robert Elkus; Judy Miller & Karen & Larry Farber; Dr. Karen Bolak & Frances Finsilver; Joan & Gerry Glassberg; Miriam & Kal Goren; Pamela & David Haron; Elaine & Alan Herbst; Barbara & Michael Horowitz; Dana & Joel Ishbia; Linda & Steve Jacobson; Denise, Warren & Annie Kaplan; Jill & Michael Koidin; Joanne & Robert Kraft; Sheryl & Jeff Levin; Maureen & Bruce Levine; Bob Levy; Sherri & Eddie Lumberg; Lori Lutz; Maura Cook & Allen Michale; Sherry Mitteldorf; JP Morgan Team; Marianne & Neal Robin; Jo Rosen & Family; Julie & J. Adam Rothstein; Becky & Gary Sakwa; Joan & Neil Satovsky; Sheila & Dan Schiffer; Sara & Dan Schnaar; Pam Nadler & Mark Sickles; Ellin & Steve Skapik; Sherrie & Norty Stern; Sherry & Danny Stewart; Julie & Steve Strickland; Ruth Podolsky Tobias; Fran Victor; Monique & Jeffrey Weiss

Regene Schmier – Marcia & Morry Bednarsh; Barbara & Douglas Bloom; Nancy & Phillip Bortman & Family; Linda Brodsky; Linda & Stan Burech; Evelyn Burton; Cathy & Steven Cohn; The Robert & Bess Cook Foundation; Ilene & Gary Damrauer; Peggy & Marvin Damrauer; Suzanne & Jeff Deutch; Karen Dietrich; Robin & Robert Elkus; Judy Miller & Karen & Larry Farber; Dr. Karen Bolak & Frances Finsilver; Joan & Gerry Glassberg; Miriam & Kal Goren; Pamela & David Haron; Elaine & Alan Herbst; Barbara & Michael Horowitz; Dana & Joel Ishbia; Linda & Steve Jacobson; Denise, Warren & Annie Kaplan; Jill & Michael Koidin; Joanne & Robert Kraft; Sheryl & Jeff Levin; Maureen & Bruce Levine; Bob Levy; Sherri & Eddie Lumberg; Lori Lutz; Maura Cook & Allen Michale; Sherry Mitteldorf; JP Morgan Team; Marianne & Neal Robin; Jo Rosen & Family; Julie & J. Adam Rothstein; Becky & Gary Sakwa; Joan & Neil Satovsky; Sheila & Dan Schiffer; Sara & Dan Schnaar; Pam Nadler & Mark Sickles; Ellin & Steve Skapik; Sherrie & Norty Stern; Sherry & Danny Stewart; Julie & Steve Strickland; Ruth Podolsky Tobias; Fran Victor; Monique & Jeffrey Weiss

Regene Schmier – Marcia & Morry Bednarsh; Barbara & Douglas Bloom; Nancy & Phillip Bortman & Family; Linda Brodsky; Linda & Stan Burech; Evelyn Burton; Cathy & Steven Cohn; The Robert & Bess Cook Foundation; Ilene & Gary Damrauer; Peggy & Marvin Damrauer; Suzanne & Jeff Deutch; Karen Dietrich; Robin & Robert Elkus; Judy Miller & Karen & Larry Farber; Dr. Karen Bolak & Frances Finsilver; Joan & Gerry Glassberg; Miriam & Kal Goren; Pamela & David Haron; Elaine & Alan Herbst; Barbara & Michael Horowitz; Dana & Joel Ishbia; Linda & Steve Jacobson; Denise, Warren & Annie Kaplan; Jill & Michael Koidin; Joanne & Robert Kraft; Sheryl & Jeff Levin; Maureen & Bruce Levine; Bob Levy; Sherri & Eddie Lumberg; Lori Lutz; Maura Cook & Allen Michale; Sherry Mitteldorf; JP Morgan Team; Marianne & Neal Robin; Jo Rosen & Family; Julie & J. Adam Rothstein; Becky & Gary Sakwa; Joan & Neil Satovsky; Sheila & Dan Schiffer; Sara & Dan Schnaar; Pam Nadler & Mark Sickles; Ellin & Steve Skapik; Sherrie & Norty Stern; Sherry & Danny Stewart; Julie & Steve Strickland; Ruth Podolsky Tobias; Fran Victor; Monique & Jeffrey Weiss

Regene Schmier – Marcia & Morry Bednarsh; Barbara & Douglas Bloom; Nancy & Phillip Bortman & Family; Linda Brodsky; Linda & Stan Burech; Evelyn Burton; Cathy & Steven Cohn; The Robert & Bess Cook Foundation; Ilene & Gary Damrauer; Peggy & Marvin Damrauer; Suzanne & Jeff Deutch; Karen Dietrich; Robin & Robert Elkus; Judy Miller & Karen & Larry Farber; Dr. Karen Bolak & Frances Finsilver; Joan & Gerry Glassberg; Miriam & Kal Goren; Pamela & David Haron; Elaine & Alan Herbst; Barbara & Michael Horowitz; Dana & Joel Ishbia; Linda & Steve Jacobson; Denise, Warren & Annie Kaplan; Jill & Michael Koidin; Joanne & Robert Kraft; Sheryl & Jeff Levin; Maureen & Bruce Levine; Bob Levy; Sherri & Eddie Lumberg; Lori Lutz; Maura Cook & Allen Michale; Sherry Mitteldorf; JP Morgan Team; Marianne & Neal Robin; Jo Rosen & Family; Julie & J. Adam Rothstein; Becky & Gary Sakwa; Joan & Neil Satovsky; Sheila & Dan Schiffer; Sara & Dan Schnaar; Pam Nadler & Mark Sickles; Ellin & Steve Skapik; Sherrie & Norty Stern; Sherry & Danny Stewart; Julie & Steve Strickland; Ruth Podolsky Tobias; Fran Victor; Monique & Jeffrey Weiss

Regene Schmier – Marcia & Morry Bednarsh; Barbara & Douglas Bloom; Nancy & Phillip Bortman & Family; Linda Brodsky; Linda & Stan Burech; Evelyn Burton; Cathy & Steven Cohn; The Robert & Bess Cook Foundation; Ilene & Gary Damrauer; Peggy & Marvin Damrauer; Suzanne & Jeff Deutch; Karen Dietrich; Robin & Robert Elkus; Judy Miller & Karen & Larry Farber; Dr. Karen Bolak & Frances Finsilver; Joan & Gerry Glassberg; Miriam & Kal Goren; Pamela & David Haron; Elaine & Alan Herbst; Barbara & Michael Horowitz; Dana & Joel Ishbia; Linda & Steve Jacobson; Denise, Warren & Annie Kaplan; Jill & Michael Koidin; Joanne & Robert Kraft; Sheryl & Jeff Levin; Maureen & Bruce Levine; Bob Levy; Sherri & Eddie Lumberg; Lori Lutz; Maura Cook & Allen Michale; Sherry Mitteldorf; JP Morgan Team; Marianne & Neal Robin; Jo Rosen & Family; Julie & J. Adam Rothstein; Becky & Gary Sakwa; Joan & Neil Satovsky; Sheila & Dan Schiffer; Sara & Dan Schnaar; Pam Nadler & Mark Sickles; Ellin & Steve Skapik; Sherrie & Norty Stern; Sherry & Danny Stewart; Julie & Steve Strickland; Ruth Podolsky Tobias; Fran Victor; Monique & Jeffrey Weiss

Regene Schmier – Marcia & Morry Bednarsh; Barbara & Douglas Bloom; Nancy & Phillip Bortman & Family; Linda Brodsky; Linda & Stan Burech; Evelyn Burton; Cathy & Steven Cohn; The Robert & Bess Cook Foundation; Ilene & Gary Damrauer; Peggy & Marvin Damrauer; Suzanne & Jeff Deutch; Karen Dietrich; Robin & Robert Elkus; Judy Miller & Karen & Larry Farber; Dr. Karen Bolak & Frances Finsilver; Joan & Gerry Glassberg; Miriam & Kal Goren; Pamela & David Haron; Elaine & Alan Herbst; Barbara & Michael Horowitz; Dana & Joel Ishbia; Linda & Steve Jacobson; Denise, Warren & Annie Kaplan; Jill & Michael Koidin; Joanne & Robert Kraft; Sheryl & Jeff Levin;

# TRIBUTES

Temple Israel is mourning the passing of  
a longtime friend and coworker,

## Doris Winfrey

Doris' early years were spent in Arkansas, where Doris grew up with six sisters and a brother, graduated high school and went on to complete Beauty School. Shortly thereafter, she met her loving husband, Earl. The two married October 8, 1953 and soon relocated to Detroit.

Doris spent over 30 years working in the Detroit Jewish community. In the 1970s, Doris worked with Bryna Leib as a teacher assistant at Adat Shalom. When Bryna was recruited to start the pre-school at Temple Israel, she wisely insisted on bringing Doris with her. Doris became an icon at Temple, working not only in the Early Childhood Center, but also as a bridal attendant and rehearsal assistant. Doris' true passion was education. As such, she spent much of her life as an education advocate, sharing her enthusiasm and instilling its importance in those she touched. She impacted thousands of children through Temple's ECC, and, most notably, was instrumental in her two children and five grandchildren understanding the importance of academics. She was exceptionally talented, loyal and hardworking, and Bryna has always maintained that she could not have started Temple's ECC without Doris.

"Doris adored children and had a great sense of humor," Bryna explained.  
"She was a very special woman, and she will be greatly missed by all who knew her."

## TEMPLE ISRAEL TRIBUTE FORM

Your Name: \_\_\_\_\_

Your Address: \_\_\_\_\_

City/State Zip: \_\_\_\_\_

Your Phone: \_\_\_\_\_

Please make a contribution to the following fund:

☐ \$12.00 Contribution ☐ \$18.00 Chai contribution

☐ \$25.00 Contribution

☐ Other, please specify (\$12.00 minimum): \_\_\_\_\_

☐ \$25.00 Library book dedication (Library Fund)

☐ \$54.00 Ora V' Simcha book dedication (Prayerbook Fund)

☐ \$118.00 Prayer book dedication (Prayerbook Fund)

Make checks payable to Temple Israel and send to  
5725 Walnut Lake Road, West Bloomfield, MI 48323

☐ Check enclosed ☐ Visa ☐ MasterCard ☐ AmEx

Number: \_\_\_\_\_ Exp. Date: \_\_\_\_\_

Billing Name: \_\_\_\_\_

### Tribute Occasion:

☐ In honor of ☐ In appreciation of

☐ Speedy recovery of ☐ In memory of

☐ Marking yahrzeit of

For (Bar Mitzvah, wedding, etc.): \_\_\_\_\_

Name to appear on tribute: \_\_\_\_\_

Please send acknowledgment card to:

Name: \_\_\_\_\_

Address: \_\_\_\_\_

City/State Zip: \_\_\_\_\_



## IN REVIEW: HOUSING THE SOUTH OAKLAND SHELTER

Temple Israel would like to thank our dedicated volunteers who helped with this year's project with the South Oakland Shelter. Your hard work, energy and commitment to this cause truly made a difference in the lives of thirty-two men, women and children from the South Oakland Shelter. We couldn't have done it without all of our countless volunteers who donated their time and services.

A special thank you to our dedicated co-chairs, Art Dubin, Jane Schelberg and Andrew Schelberg. Thank you for everything!!! You truly are the heart of this mitzvah project! Many thanks to our fabulous committee: Mike Anspach, Janice Cherkasky, Beth Kirschner, Lindsey Maddin, Ali Manson, Marilyn Moss, Barbara Rosenthal, Gail Young, Amy Wander, and Michelle Winston for the outstanding job they did!

"Todah Rabah" to Temple's wonderful affiliate groups: Sisterhood, Brotherhood, YFTI and JYFTI for their help and support. We'd also like to thank Temple Israel's Caring Community, Shoshana Arden and JARC for their help and hard work!

Finally, to the many individuals and businesses who gave so much of their time and services to make this week a success – we thank you for your continued support and generosity!

Special thanks to the Lynn & Harvey Rubin Social Action Fund, Susan & Hanley Yorke Social Action Fund, Lauren & Phillip Fisher Family, and Steven Gotlib Memorial Fund.





Rabbi ..... Harold S. Loss  
Rabbi ..... Paul M. Yedwab  
Rabbi ..... Joshua L. Bennett  
Rabbi ..... Marla R. Hornsten  
Rabbi ..... Jennifer T. Kaluzny  
Rabbi ..... Jennifer M. Lader  
Cantor (The Stephen Gottlieb Cantorial Chair) ..... Michael Smolash  
Cantor (The Stephen Gottlieb Cantorial Chair) ..... Neil Michaels

Director, Education & Lifelong Learning ..... Rabbi Arianna L. Gordon, RJE  
Director, The Well ..... Rabbi Dan Horwitz

Chief Executive Officer ..... David M. Tisdale  
Chief Operating Officer ..... Alan Harris  
Director, Early Childhood Center ..... Julie Eisman Levy  
Director, Family Life Center ..... Kari Provizer, LMSW, ACSW  
Director, Programming ..... Tracie Fienman  
Director, Libraries and Media Center ..... Lauren Marcus Johnson  
Director, Communications ..... Shelly Conway  
Controller ..... Marci S. Grossman, C.P.A.  
Director, Facilities ..... Eric Groh  
President ..... Edward M. Royal  
Vice President ..... Hilary King  
Vice President ..... Michael Curhan  
Vice President ..... Laurence Tisdale  
Treasurer ..... Joseph Bigelman  
Secretary ..... Ellie Bittker  
Member at Large ..... Bryant M. Frank  
Past President ..... Julie August  
Rabbi Leon Fram ..... (1895-1987)  
Rabbi M. Robert Syme ..... (1920-2003)  
Cantor Harold Orbach ..... (1931-2014)  
Cantor Robert Tulman ..... (1904-1960)

**Time sensitive material enclosed.**

## The Alicia Joy Techner Memorial Parenting Series

**Thursday, February 9, 2017 • 7 pm**

### Julie Tarney

#### **My Son Wears Heels:**

#### **One Mom's Journey from Clueless to Kickass**

When Julie Tarney's only child Harry was two years old, he told her, "Inside my head I'm a girl." It was 1992. Lacking a positive role model of her own and fearful of being judged as a Jewish mother potentially messing up her kid, Julie embarked on an unexpected parenting journey that led Julie to the realization that her son had known who he was all along. Her job was simply to get out of the way and let him be.

**Julie Tarney** is a writer, resource for parents raising gender-creative kids, and an advocate for LGBTQ youth.



**Register online at [temple-israel.org/MySonWearsHeels](http://temple-israel.org/MySonWearsHeels)**

Books will be available for purchase. For more information, please contact Kate Boman at 248-661-5700 or [kate@temple-israel.org](mailto:kate@temple-israel.org).  
This event is open to the community at no cost, however reservations are requested.