



MESSENGER

JULY/AUGUST 2023 • TAMMUZ/AV/ELUL 5783 • VOLUME 65, NO. 4

MESSENGER FUNDED BY THE PAUL AND LOIS KATZMAN ENDOWMENT

Join us for

A CELEBRATION OF KARI PROVIZER

and the Robert Sosnick Family Life Center

LIFTING OUR FAMILIES
for 25 Years



friday
AUGUST 4TH
2023

Page 12-13

MESSAGE FROM OUR LEADERSHIP



CELEBRATING 25 YEARS OF THE ROBERT SOSNICK FAMILY LIFE CENTER

I keep thinking about the teaching from the Talmud, “To save a life is to save an entire world.” How many worlds has the Robert Sosnick Family Life Center (RSFLC), with Kari Provizer at the helm, saved? Hundreds? Thousands? As many as fill our solar system, that is to be sure!

I have never known Temple Israel without the RSFLC. Kari was the one who picked me up at the airport for my interview all those years ago. It’s Kari’s door that I knock on when

I need support for a congregant, a referral or resource, information about the social services, to get a gift card to help a family in distress, or to sign someone up for *No Family Without Chanukah*. The programs from the Family Life Center are relevant and cutting edge: From the Kever Avot program that takes seniors to visit the graves of their loved ones at the holidays, to Narcan trainings and drug and alcohol intervention. The Family Life Center offered the first transgender teen and parent support group in the area, let alone at a Temple. It was the Family Life Center that has offered divorce support, bereavement support, cancer support, and so on. Through the RSFLC, we bring mi shebeirach blankets to children in the hospital and deliver challahs to folks when they return from their hospital stay. Kari’s door is always open—unless she’s working with someone. She and the Family Life Center are intertwined. I often wonder where one stops and the other begins.

All of this started when Kari was hired back in 1996, (which this summer marks 25 years in Covid years!) and the center was endowed in 2003. Kari explained that “We were seeing families in crisis, and we knew we had to do something about it.” And we did. There is no doubt that Temple could not do what it does to aid congregants in crisis, to support our aging population, to be of service to our families without The Family Life Center. It’s not all about crisis either. Through the RSFLC, we get to celebrate our congregants too—with premarital counseling programs, holiday celebrations, Thursday afternoon Senior Adult Concert Series, exercise and yoga, and empty nester events. It’s not an understatement to say the list goes on and on and on. And so, the tagline “We’re always here for you,” is the absolute truth.

On the following pages you will see information about our August 4th celebration—honoring Kari and celebrating the Robert Sosnick Family Life Center for 25 years. Whether you have been helped by the Family Life Center or if you want to ensure that it is “always here” for those who need it, please come celebrate with us, for as Kari always says, “It takes a village” and you are part of our village!



RELIGIOUS SERVICES & EVENTS



In Review: Holy Sparks Shabbat - In honor of the Holy Sparks exhibit celebrating 50 years of women in the rabbinate, the Goodman Family Museum has commissioned portraits by Jewish Artist, Isaac Brynjegard-Bialik, honoring our women rabbis.

SHABBAT UNDER THE STARS

Fridays • 7pm at Temple Israel Pavilion (weather permitting)

See next page for details.

SUNDAY MORNING MINYAN SERVICE

Sundays • 9am at Temple Israel

Minyan is funded by the Mary Lou & Gary Berndt Minyan Fund, the Lipson Family Daily Minyan Fund, and the Samson Family Minyan Fund.

ROSH CHODESH

Tuesday, July 18 • 7pm Temple Israel Pavilion

Thursday, August 17 • 6pm Temple Israel Pavilion - **POTLUCK**

Celebrate the new moon and a new month! This women's spirituality group gathers monthly to discuss important issues of religious and current events.

For the August 17th Potluck, please bring a dairy/pareve item.

Register online at www.temple-israel.org/roshchodesh

IN THIS ISSUE

- 3 RELIGIOUS SERVICES & EVENTS
- 6 TEMPLE COMMUNITY
- 14 ROBERT SOSNICK FAMILY LIFE
- 16 WE TAKE PRIDE
- 18 TEMPLE YOUTH
- 20 HONORING LOVED ONES
- 22 EARLY CHILDHOOD CENTER
- 24 FUNDS IN ACTION
- 25 TYNER RELIGIOUS SCHOOL
- 28 TEMPLE MUSIC
- 30 WOMEN OF TEMPLE ISRAEL
- 32 BROTHERHOOD
- 33 LIFE CYCLE EVENTS
- 36 TRIBUTES

Shabbat under the Stars

July 7th

Kabbalat Shabbat Service
Teen T'fillah Team

July 14th

Kabbalat Shabbat Service
Laker Guest Artist
Noah Aronson & Band

*The music for this service has been sponsored
in loving memory of Beverly & Irving Laker.*

July 21st

Kabbalat Shabbat Service
All Stars

July 28th

Kabbalat Shabbat Service
Pray & Play + **Picnic Dinner**

Service featuring music of Temple KIDSRAEL album

August 4th

Kabbalat Shabbat Service
Kari Provizer & RSFLC Celebration
with Simone Vitale Band +
Picnic Dinner

August 11th

Kabbalat Shabbat Service
Tailgate Shabbat

August 18th

Kabbalat Shabbat Service
Pray & Play + **Picnic Dinner**

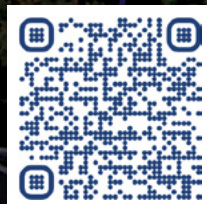
August 25th

Kabbalat Shabbat Service
All Stars

**Pray & Play Activities begin at 5:30pm.*

**Picnic Dinners begin at 6pm. Bring your own or enjoy our picnic buffet.*

More information and registration: www.temple-israel.org/Stars





KABBALAT SHABBAT SERVICE WITH LAKER GUEST ARTIST

Sponsored in loving memory of Beverly & Irving Laker.

NOAH ARONSON & BAND

FRIDAY, JULY 14 • 7PM AT TEMPLE ISRAEL

Join us for a special Kabbalat Shabbat service featuring the incredible talents of Noah Aronson. Aronson is performing at Temple for the first time since 2015 and will be joined in his performance by Tali Rubinstein, Coleen Dieker and Noam Israeli. This event promises to be an unforgettable evening of music, prayer, and community.

More Info: www.temple-israel.org/event/laker

NOAH has been creating and inspiring for more than two decades, giving tours year-round and leading music-driven prayer experiences. For more on Aronson's music check out his website: www.noaharonson.com

TALI is an LA-based recorder player and composer. A ground-breaking musician who introduced the recorder into jazz and contemporary music, Tali is known for her unique style and personal expression and is considered one of the most influential recorder players in the world.

COLEEN performs at a high level on several musical instruments: piano, guitar, flute, ukulele, voice, and especially the violin. She is also an accomplished composer and arranger, a gift she has employed in various roles, including as a music director in the non-secular world.

NOAM is an LA-based drummer, producer and recording artist from Israel and has performed in major festivals and famous venues and halls around the world.

TEMPLE COMMUNITY



In Review: Shabbat for Tots: Shavuot Social - Families with young children were invited to celebrate Shabbat and Shavuot. We started off the morning with crafts and activities, followed by a family friendly Shabbat service, and an ice cream sundae bar to top it all off!



AROUND THE CONGREGATION

At Temple Israel we want to keep you in the know about what's happening at your congregation.

That's why we are launching our own newsblog, "Around the Congregation," which will cover and capture the events that happen at Temple. The blog will be maintained by our in-house copywriter, Sean Shapiro, who brings years of journalism and storytelling experience to Temple.

It's a simple approach, capture and tell the stories that happen at Temple on a weekly basis. Whether that be events, services, or guest speakers, basically everything that makes Temple Israel the place you want to call home.

We also want your help. Do you have a story about Temple that you want to share? Is there something we should include? You can reach out to Sean directly at sshapiro@temple-israel.org

Check out the blog at www.temple-israel.org/latest-news or scan the QR code ▶▶▶



FAMILY PROGRAMMING

Family Programming events are generously supported by the Stark Family Fund. For questions, please contact Helene at hdeutch@temple-israel.org or 248-661-5700.



SHABBAT AT THE BEACH

Saturday, July 1 • 11am at Elizabeth Lake Beach

Join us for a one-of-a-kind experience as we celebrate Shabbat at the Beach! Bring your own picnic and enjoy sand, sun, and Shabbat with us at Elizabeth Lake! **More Info & RSVP:** www.temple-israel.org/event/beach



SHABBAT FOR TOTS: POPSICLES IN THE PARK

Saturday, July 8 • 10am at Beverly Hills Village Park

Families with young children are invited for our beloved Shabbat playgroup! Join friends and clergy as we celebrate Shabbat with crafts, activities, musical prayer, playtime, and popsicles in the park! **More Info & RSVP:** www.temple-israel.org/event/shabbatfortots



In Review: It's a Girl Thing - Our 'It's a girl thing' crew had a great weekend full of activities! It started off with Havdalah and 'Are you there God? It's Me, Margaret', at The Maple Theater, followed by a super fun Turning Teen workshop with Dr. Lisa Klein, learning about how special it is to grow up!



SPLASH PAD HAVDA-LUAAU

Saturday, July 15 • 6:30pm at Lily Pad Springs

Families are invited to join us for super cool evening at Lily Pad Springs! Put on your swimsuit, bring your towels, and we'll supply the leis; we have the splash pad all to ourselves! Say aloha to Shabbat during a musical Havdalah ceremony with our clergy, followed by dinner and Hawaiian shave ice! Please register by July 10. **More Info & RSVP:** www.temple-israel.org/event/Havda-Luau



GRAND TEA PARTY:

A MULTIGENERATIONAL FAMILY SHABBAT

Saturday, July 22 • 11am at Temple Israel

Grandparents, grand friends, and grandchildren are cordially invited for a truly "grand" affair! Join us for a delightful Shabbat morning of tea and togetherness full of family, fancy hats, and finger sandwiches! Afternoon includes tea and a light lunch. Please register by July 17. **More Info & RSVP:** www.temple-israel.org/event/grandteaparty



MONDAY, SEPTEMBER 4, 2023
10:30am - 2pm

Pizza • Magicians • Pony Rides
Kona Ice Truck Moon Walks • Face Painting
DJ • Games & SO MUCH MORE!

Fun for the whole family! No pets, please.

Sponsored by the Morris & Esther Bittker Picnic Fund.





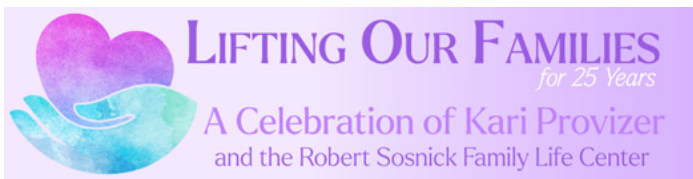
In Review: Family Camp - Families packed up and headed to Tamarack for a family fun filled weekend away at camp!



PLAY & PRAY SHABBAT

Friday, July 28 • 5:30pm at Temple Israel

Join us for family-friendly Play & Pray activities with friends before a delicious picnic dinner followed by Shabbat Services. Activities are geared toward ages 0-10, but all are welcome! Please help us plan accordingly by registering for both activities and dinner by Friday, July 21! **More Info & RSVP: www.temple-israel.org/event/Shabbat-7-28**



A CELEBRATION OF KARI PROVIZER & RSFLC

Friday, August 4 • 5:45pm Shabbat Dinner; 7pm Kabbalat Shabbat Service; 8pm Oneg & Celebration (featuring music from Simone Vitale)

Please join us in honoring Kari for an evening of love, laughter and celebration as we show our appreciation for the incredible difference she has made for over 25 years!

RSVP for dinner: www.temple-israel.org/form/kp25FLC



CHALLAH ROLL

Saturday, August 5 • 9am at Temple Israel

Grab your bike, scooter, skateboard (anything that rolls!) and join us for a wheely fun morning! Choose your own adventure: **9am:** Family-friendly, mostly flat, 4mi bike ride along the West Bloomfield Trail -- and/or --

10am: Zhuzh up your gear, navigate our obstacle course, and enjoy services with Rabbi Josh followed by a donut decorating oneg! **More Info & RSVP:**

www.temple-israel.org/event/ChallahRoll



YOUNG FAMILY HAVDALAH CAMP OUT

Saturday, August 12 • 5pm at Temple Israel

Families with young children are invited to a "sleep-under" camp out!! Enjoy a fun-packed summer night of crafts and games, dinner with bug juice, Havdalah and singing around the camp fire and s'mores galore! Older kiddos are invited to bring their sleeping bags and stay late for a movie night under the stars! **More Info & RSVP:**

www.temple-israel.org/event/HavdalahCampOut

PLAY & PRAY SHABBAT

Friday, August 18 • 5:30pm at Temple Israel

Join us for family-friendly Play & Pray activities with friends before a delicious picnic dinner followed by Shabbat Services. Activities are geared toward ages 0-10, but all are welcome! Please help us plan accordingly by registering for both activities and dinner by Friday, August 11! **More Info & RSVP:** www.temple-israel.org/event/Shabbat-8-18



PET SHABBAT

Saturday, August 26 • 9am at Temple Israel

Shabbat is a special day for the entire family- including your pets! Bring your furry (or scaly) friends to Temple* as we celebrate Shabbat and our beloved companions. Enjoy a family-friendly service, pet blessing ceremony, an op-purr-tunity to create care packages for local animal shelters, and take-home goodies for your pet, too! **More Info & RSVP:** www.temple-israel.org/event/PetShabbat2023

ADULT PROGRAMMING

For questions on Adult Programming, please contact Helene at hdeutch@temple-israel.org or 248-661-5700.



GAME DAY

Tuesday, July 18 & August 15 • 1pm at Temple Israel

Bring your favorite game and meet your friends at Temple Israel's monthly Game Day for your game of choice. Coffee, tea and snacks will be served. Open to the community and no cost to attend. Reservations are required by the Friday prior to each Game Day. **More Info & RSVP:** www.temple-israel.org/event/GameDay

Rock the Casbah with Chef Layla

THURSDAY, JULY 20TH

7PM AT TEMPLE ISRAEL

Join us for this extraordinary evening of Moroccan-inspired culinary delights from Chef Layla and captivating music by the talented, Zipser Foundation Artist-In-Residence, Aaron Markovitz.

Prepare your taste buds for a feast of authentic Moroccan cuisine meticulously crafted by Chef Layla. She will transport you to the vibrant streets of Marrakech with her mastery of spices, fragrant tagines, delectable couscous, and an array of tantalizing mezze.

The event costs \$60 for a Temple member and \$120 for a Temple couple. Non-member tickets at \$90 for an individual and \$180 for a couple.

To RSVP, scan the QR code or go to: www.temple-israel.org/event/Casbah





In Review: An Evening with Bari Weiss & Mitch Albom - We were honored to welcome keynote speaker Bari Weiss & featured guest, Mitch Albom for our latest in the T4Israel series of programs. The evening included an intimate VIP dinner with Bari Weiss, an informative and inspiring conversation by the renowned authors and journalists about antisemitism & antizionism, and an after-glow with wine, dessert, and book signing. Many thanks to The Miriam z"l and Dr. Isaac Barr Israel Education Fund for supporting this fantastic event.



In Review: Do Good Date Night - Couples spent the evening in partnership with Brilliant Detroit to beautify homes and yards, followed by a delicious dinner at El Barzon!

TIKKUN OLAM:



SHABBAT B'YACHAD

Expecting a baby? We can't wait to help your family celebrate Shabbat with your newest addition! Sign up for our Shabbat B'Yachad program to have a complementary Shabbat dinner delivered to your home when baby arrives, complete with challah, wine, and candles. **Sign up at** www.temple-israel.org/form/shabbat-byachad Shabbat B'Yachad is funded by the Josephine & Harry Colton Shabbat B'Yachad Fund.



DRIVE-THRU FREE FRESH FOOD PANTRY

Thursdays, July 13, 27, August 10 & 24

2:45-4:45pm at Temple Israel Sanctuary Portico

The pantry is operating as a contact-free drive-thru on the 2nd and 4th Thursday of each month. Open to the community. Need is the only requirement.

YAD EZRA DELIVERIES

Sunday, July 2, August 27 & December 10

Looking for a rewarding volunteer opportunity with minimal time commitment? Deliver food to the homebound with Yad Ezra! For more information contact Helene Deutch at hdeutch@temple-israel.org or 248-661-5700.

Temple Israel
Making a difference.

Goodman Family
**Judaic &
Archival
MUSEUM**
at Temple Israel

The Goodman Family Judaic and Archival Museum is proudly exhibiting the work of local artist, Dr. Samuel Ruskin, z"l. A prominent figure in the field of psychiatry, Dr. Ruskin devoted his creative energies to crafting exquisite sculpture work using wood, meerschaum, ebony, alabaster, ivory, and bronze. We invite you to come preview the figurines, pipes, and other captivating pieces that will be on display through August.



We are also pleased to feature artwork made by the children of Temple Israel's Susan & Rabbi Harold Loss Early Childhood Center. Included are both group and individual projects, for which the children used various materials and mediums inspired by their learning.

Do you have a love of art & design and a passion for Jewish culture? Join the Goodman Family Museum volunteer committee to help curate our ever-changing exhibits that showcase the stories of our people. **More information at** www.temple-israel.org/museum

A CELEBRATION OF KARI PROVIZER and the Robert Sosnick Family Life Center

It's a Thursday morning in June at Temple Israel.

The executive conference room is booked for a support group, down the hall, space is being set up for the bi-weekly adult health and fitness class, and in the sanctuary sound checks are being done for a free afternoon concert. Kari Provizer, like she normally is, is buzzing around the building. She's checking to make sure things are booked, staffed and attended. She is leading and participating in multiple meetings, zooms and one on one's. She's even found time to brainstorm the name of another support group. Between the support group, fitness class, and concert hundreds of people turned to Temple Israel and The Robert Sosnick Family Life Center this day alone. In more than 25 years of work, over 100,000 people have felt the impact of the center and the work of Kari Provizer.

It all started with a simple, but grand idea by Robert "Bobby" Sosnick z"l. Bobby wanted to create a position at Temple where someone was there to interact with families on behalf of the clergy. He recognized that rabbis got pulled in thousands of directions, and while members turned to Temple in times of joy, they also turned to Temple in times of grief and difficulty. Sosnick felt there was room for a social worker at Temple, someone with an expertise that could provide relief, assistance, and resources for Temple families and the greater Jewish community. He also wanted to remain anonymous, so in 1996 the Temple Israel Family Life Center was announced with the benefactor being listed as nothing more than "a generous member of our congregation," and Kari was tasked with creating a first-of-its kind center within the synagogue space.

Kari always knew she wanted to do something where she could help and advocate for people, but originally thought she would work in the school system after getting her masters in social work from the University of Michigan.

She completed her practicum in the Waterford school district, before moving and working at the Jewish Senior Life Center in Des Moines, Iowa. Working with seniors in Iowa led to a position with Jewish Senior Life in Michigan, and shortly after was approached about the position that Temple was looking to create with Sosnick's anonymous funding.

"I grew up at Temple, and knew it was always a place that I wanted to come home to. To have the opportunity to create the Family Life Center and what it has evolved into has been incredible," Kari said. "I knew how special Temple was and I had a vision of the amazing things we could do with the love and support from the Sosnick family."

From Day 1 the job has continued to evolve to best meet the needs of the congregation. Kari spent the first year meeting with Temple members, learning about their needs, taking notes and building programs that could serve those needs. It's a 24/7 job. To this day, when the phone rings, and someone is in a situation or crisis, Kari is there. But as Sosnick envisioned, Kari's role was always about more than the crescendo of a crisis, it was about normalizing care and creating supportive avenues that helped before a situation would become dire.



LIFTING OUR FAMILIES for 25 Years

As the Family Life Center evolved, Kari remembers, it quickly became an educational resource and touchpoint for all phases of a person's life. Kari and Bobby would meet every three months to discuss the progress of the Family Life Center. They would meet in a boardroom that had a large marble table, maybe 16 feet in length. At the first meeting they were on opposite ends of the table, with Kari giving a presentation. With each meeting, that massive table seemed to get smaller, and smaller, and the presentations became less formal but so much more important to him.

"We'd eventually sit next to each other at the table, and I'd just tell him the stories of the people we had helped, and the difference the Family Life Center was making in people's lives," Kari said. "And he just wanted to hear those stories. He was so concerned about our mission, and was interested in the specifics of what I was doing to help each family. This was such a mitzvah for him. It was about making a difference for people who never would have known he made it happen."

The Temple Israel Family Life Center didn't become "The Robert Sosnick Family Life Center" until after Robert's death, when his wife SuSu and children decided to endow the center, continuing Robert's work and honoring his legacy by breaking the anonymity. While he never wanted his name on the Family Life Center, Sosnick's vision has lived on for more than two decades after his passing with Kari's leadership. The Family Life Center has evolved and grown, being on the forefront of understanding and education, becoming a vital connection for the greater Jewish community.

"As a rabbi, having that type of person, that type of resource right down the hall in Kari, someone who has the expertise in so many spaces, it's amazing," Rabbi Josh Bennet said. "I think when Kari came in, part of the plan was to have someone who could support the rabbis, and better help them connect with the Temple membership, which she has. But Kari's taken it and done so much more, creating a space that goes above and beyond."

Sometimes it's easy to see the impact. Like a Thursday in June where Temple is buzzing. Kari is introducing a free concert to a lively audience, and members of the adult health and fitness class are happily conversing as they head back to their cars after a low-impact workout. But most of the stories we'll never hear, they won't be written on these pages. The lives impacted through anonymous programs, the late night calls, the support in the shadows when Kari was there for someone. How do you fully measure the impact of educational information, normalizing mental health matters, and fighting the stigma of substance use disorder? You can't. It's a number the human mind can't fathom.

The Robert Sosnick Family Life Center was born with a simple, anonymous idea. And while no longer anonymous, it's simply one of the biggest reasons Temple Israel is about making a difference.

On Friday, August 4th please join us in honoring Kari and the Robert Sosnick Family Life Center for an evening of love, laughter and celebration as we show our appreciation for the incredible difference they have made for over 25 years!

If you would like to further honor Kari, please consider making a donation to a new fund we have created in her honor - *The Kari Provizer Lifting Our Families Fund for the Robert Sosnick Family Life Center*. Your generous contribution will help further Bobby's mission allowing Kari to continue the incredible work she does everyday.



THE ROBERT SOSNICK FAMILY LIFE CENTER



In Review: Afternoon Concert Series - Temple Trio: Emma Trivax, Dan Iwrey & John Bogdan - *An Afternoon of Ahavah* (6-15)

SUPPORT GROUPS:

For more information on any of these Support Groups, contact Laura Koziol at laura@temple-israel.org or 248-661-5700.

AA- ALCOHOLICS ANONYMOUS

Thursdays • 7:30pm at Temple Israel

Open to individuals who have a desire to stop using alcohol and/or other substances. Meeting utilizes the AA 12-Step Program. **For more information contact Fred Stevenson at frednstevenson@gmail.com or 248-872-8652.**



CAREGIVER SUPPORT

Tuesday, July 25 & August 22 • 10am Zoom

Build a support system with people who understand Dementia and other aging challenges. Alzheimer's Association® support groups are a safe place for people living with dementia and their care partners to talk through issues and ways of coping. Facilitated by Karen Kline. Space is limited. **More Info & RSVP:** www.temple-israel.org/event/caregiver



BEREAVEMENT SUPPORT GROUP

Thursdays, July 6, 20, August 10, 24 • 7pm at Temple

After the death of a loved one, there are so many thoughts, feelings, and experiences to deal with. Please join Diane Levy-Rubinstein, LMSW and others in sharing one's grief within a group setting while also defining the uniqueness of your grief. **Please note that we must have at least 4 participants registered or we may need to cancel. It is important to register online.* **More Info & RSVP:**

www.temple-israel.org/event/bereavement

Compassionate Connections

A Support Group for Those Supporting an Aging Loved One



COMPASSIONATE CONNECTIONS

Tuesdays, July 11, August 8 & Sept 12 • 5:30pm at Temple

Are you dealing with challenges as your parents age? How do I know if my parent needs help? Come join others who are feeling the same and have an open and supportive conversation with Alyssa Tobias, MSW, CDP. **More Info & RSVP:** www.temple-israel.org/event/AgingParent



In Review: Afternoon Concert Series - Matthew Ball (5-18)

PROGRAMMING:

For more information on any of these programs, contact
Laura Koziol at laura@temple-israel.org or 248-661-5700.



ADULT HEALTH & FITNESS CLASS

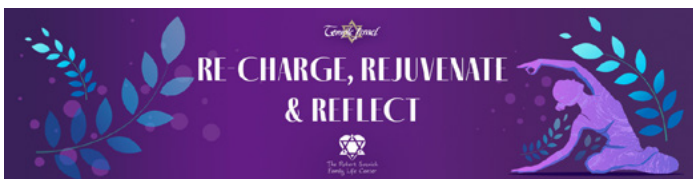
Tuesdays: July 11, 18, 25, August 1, 8, 15, 22 & 29

Thursdays: July 6, 13, 20, 27, August 3, 10, 17, 24 & 31

3pm at Temple Israel

Join us for one or all of these classes which will focus on improving balance, mobility, coordination, flexibility, and overall wellness. **Register for all available classes by purchasing a punch card today:**

www.temple-israel.org/event/fitness



RECHARGE, REJUVENATE & REFLECT

Tuesday, July 18 & August 15 • 5:30pm at Temple Israel

Facilitator Gayle Goodman, 200 RYT - Join us for a relaxing evening of yoga, Qigong, and sound therapy to find your balance. This event is best suited for ages 30-75. **More**

Info & RSVP: www.temple-israel.org/event/Yoga

In conjunction with the Caring Community, Celebrating Our 26th Year

26^{YEARS} AFTERNOON Concert SERIES



THURSDAY, JULY 20

2 PM AT TEMPLE ISRAEL

Michael Carluccio

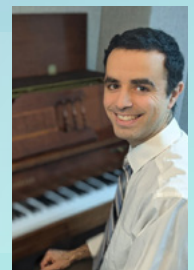
'The Man of a Thousand Voices'

THURSDAY, AUGUST 17

2 PM AT TEMPLE ISRAEL

David Rogers

'Greatest Popular Hits of
Jewish Composers'



SEPTEMBER - NO CONCERT (HIGH HOLY DAYS)

OCTOBER 19 - SAVE THE DATE!

Cantor Neil Michaels & Friends

Open to the community free of charge.

In person, at Temple Israel or virtually on our website. Reservations are not necessary, however, if you are bringing a large group, please call Kari K. Provizer, LMSW, ACSW at 248-661-5700 so that we can plan accordingly.

If you will be joining us virtually, please tune in here:

www.temple-israel.org/concerts

Partially funded by the Caring Community, the David Arthur Stulberg Memorial Fund, the Harry & Phyllis Kellman Memorial Fund, the Bertha & Harry Kifferstein Senior Adult Programming Fund and the Iwrey Family Special Needs Fund.



WE TAKE PRIDE



Left to right: Dan Iwrey, Maya Grinboim, Aaron Markovitz, Emma Trivax & John Bogdan

STAFF SPOTLIGHT:

It has been a busy spring and summer for the music department at Temple Israel.

Aaron Markovitz, the Burton A. and Sandra D. Zipser Foundation Artist in Residence, recently recorded a new album that will debut later this summer.

Emma Trivax, Dan Iwrey, and John Bogdan recently performed together for the first time as the Temple Trio, delighting an afternoon concert crowd.

Maya Grinboim, the Director of Music Production, has worn many hats for the department, including director, producer, and organizer, consistently filling Temple with musical joy.

The quintet comprising Markovitz, Trivax, Iwrey, Bogdan, and Grinboim forms a vital core of the Temple Israel music department, led by Cantors Michael Smolash and Neil Michaels. These gifted artists and creatives complement the music and worship environment at Temple under the

guidance of cantors and rabbis from our stellar clergy team.

Emma Trivax has been involved in singing at Temple since her elementary school days. She started with the Shabbat Singers as a child, later teaching the group as a teenager and adult. Eventually, our cantors trained her in every aspect of worship, and she leads everything from High Holy Day services to weddings, Kabbalat Shabbat, B'nei Mitzvah and more.

"For me, I always wanted to be an attorney, but I also wanted an outlet to continue singing," she said. "As this opportunity progressed, it became an amazing way to maintain that aspect of my life. Now, years later, I'm still singing at Temple."

Dan Iwrey also grew up at Temple but had primarily performed at school and through theater programs. However, as he grew older, he became more involved in Temple music due to family connections.

"My mom would arrange services in the chapel, and Emma would be part of it," he said. "My mom would chant Torah, and I would sing. It just grew from there. Whenever I was in town, I would talk to Neil and Michael, and it kept growing. It's great."

John Bogdan serves as Temple's pianist and plays in 50 to 100 services each year. Coming from a family of musicians, he has been playing the piano since the age of 3. Having trained at the London Conservatory of Music, and working at the famed University of Michigan Music Theater department, he can provide heimische accompaniment for any congregational service, but can also turn up the dial to the very highest level of serious piano performance.

"I first performed with Cantor Neil at a wedding and it marked the beginning of a great working relationship with Temple and the opportunity to be part of the musical family," Bogdan said. "It's a great Temple family to be part of."

As the Burton A. and Sandra D. Zipser Foundation Artist in Residence, Markovitz took on his role after lending a mandolin to a mutual friend.

"Through that, my friend asked if I wanted to connect with Cantor Michael Smolash at Temple, knowing that I had grown up there," Markovitz said. "I learned they were searching for an Americana Bluegrass musician, which was very timely. I had heard about the Zipser Artist in Residence program, and being able to write and create music for Temple was truly exciting."

Maya Grinboim joined Temple in 2015 as Cantor Smolash's assistant. With 15 years of experience in production, marketing, sales, and advertising with Israeli retail companies, her role quickly evolved to Director of Music Production.

"Working with him and approaching everything from a creative mindset allowed us to take things to a whole different level," she said. "Bringing in a different set of skills and a slightly different background enables us to work and grow things for everyone."

MAZEL MOMENTS:

WE TAKE PRIDE IN...

Eli Cooper who was recently named the first manager for Oakland County's transit division.

David Techner who was named Ira Kaufman's Funeral Director Emeritus and **Josh Tobias** who will take on more responsibilities with this transition.

Award-winning author **Suzanne Jacobs Lipshaw** whose second book *Mighty Mahi* celebrated its first year on the shelf.

Jason Luckoff who was honored as a distinguished alumnus of Tamarack at the Night of Bright Lights.

Jamie Wittenberg who was honored posthumously by receiving the Ruth Bader Ginsberg *Champion of Justice Award*.

Guy Barron who was recognized as a William Davidson Lifetime Achievement Award Honoree at Jewish Federation's 2023 Awards Night.

Roz Blanck who was recognized as a William Davidson Lifetime Achievement Award Honoree at Jewish Federation's 2023 Awards Night.

Amye Goldhaber who received the Sylvia Simon Greenberg Young Leadership Award at Jewish Federation's 2023 Awards Night.

Marv Sonne who was installed as International President of the Alpha Omega International Dental Society, a Jewish dental organization.

Dennis Frank who was recognized as one of Jewish Senior Life's Eight Over Eighty for his leadership in our community.

TEMPLE YOUTH

MAZEL TOV

To our newly elected 2023-2024 YFTI Executive Board!

President **Sydney Butler**

Programming VP **Jadyn Butler**

Membership VP **Amit Siegmann**

Communications VP **Lola Hafron**

Jewish Community VP **Arden Hafron**

Social Action VPs **Madison Broad & Hayley Weiss**

Fundraising VPs **Elliot Foreman & Mason Rothschild**

Junior Youth Group VP **Caryn Ben**

YFTI is excited to share their new General Board for the 2023-2024 school year!

Mitzvah Day Chairs

Andrew Bertman & Madison Kraft

Ski Trip Chairs

Ben Berman, Kate Goldman & Brandon Levine

Purim Carnival Chairs

Sarah Fish, Sophie Frank, & Lilly Moss

Communications & Recruitment Chairs

Brianna Kronenberg & Sami Perry

City Trip Chairs

Jacob Bennett & Sloane Freed

Social Programming Chairs

Arie Adamczyk & Zoe Schiffer

Message from the YFTI President

My name is Sydney Butler and I was lucky enough to be one of the presidents of this youth group last year. I am so proud of what we have accomplished. We planned crazy trips that had awesome turnouts, growing our YFTI family to a whole new group of teens. We were able to have vibrant Monday nights, full of teens who really wanted to be there, and created the magical family feeling that YFTI carries wherever it goes. Going into this year there is so much I want to accomplish. I want our family to keep growing and bring in new teens who are passionate about their Jewish identities and wanting to get closer with the other Jewish teens in the community. I want to help create more fun and rewarding opportunities for YFTI members to get involved in. This year was truly an incredible year, and I hope you'll allow me to continue making next year even better as the president of this youth group. I am eager to work with the entire YFTI board to make this youth group the best it can be, and I am so excited to see what the future holds.



BUNK45 - our youth group for 4th and 5th graders, is so excited for our upcoming year! Our aim is to rekindle summer camp vibes with fun, Jewish activities! With Bunk45, be independent and adventurous, creative, and silly and of course meet new friends! **Stay up to date on Bunk45 programs here: www.temple-israel.org/bunk45**

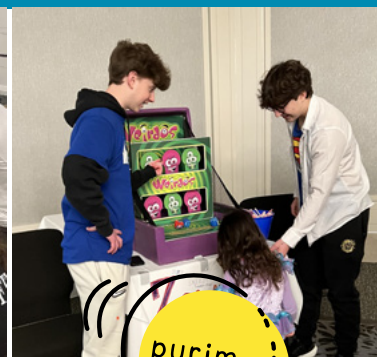


QUEST is on a mission to change the world! Our social action youth group is for middle schoolers. We will teach kids how to get their hands a little dirty and make a difference in the world while also earning community service hours and get your bar/bat mitzvah projects done! **Stay up to date on Quest programs here: www.temple-israel.org/quest**



YFTI is our fantastic high school youth group. Typical programming includes local, national, and international trips, weekend retreats, social action opportunities, social events, and more – all designed BY and made FOR teens in 9th-12th grade. While these activities are teen-driven, teens are guided and supervised by Rabbi Jen Lader and Ross Klar. **Stay up to date on YFTI programs here: www.temple-israel.org/yfti**

Save the date for The Spark: YFTI Board Leadership Retreat on Thursday August 31st at Temple Israel - YFTI Board Members ONLY.



Tell your family's story...

HONOR THE MEMORY OF A LOVED ONE BY PURCHASING A LISTING ON OUR DIGITAL MEMORIAL BOARD.

These boards are a beautiful way to observe the yahrzeits of your loved ones. The interactive displays are located on the back walls of the sanctuary. Additionally, for a more private experience, you can find boards in two additional locations. The first is in the space between the chapel and the sanctuary, and the second is located outside of Korman Hall.

During the week, on non-Shabbat days, you can search for your loved ones on the displays. On Shabbat and all Yizkor services, the screens are lock, honoring and remembering only those being observed at that time.

The most engaging feature of the memorial boards is the ability to build a comprehensive recognition honoring your loved one by uploading photos and a biography. The benefit of this system is its fluidity. We can change information with relative ease if you select new photos or would like to add to the biography.

Another feature of the system is the ability to link families together, regardless of name differences. If you, like many members, have relatives with yahrzeit memorials at Temple, we can now link them together, creating an easier search experience. Viewing any member of the family (that has been linked) will allow you to also access the listings to the rest of your loved ones.

We hope you will consider memorializing your loved ones by telling their story through our digital memorial boards. If you have any questions, or would like to purchase a listing, please contact Leah Shamailov at (248) 661-5700 or email lshamailov@temple-israel.org



Interactive Memorial Boards are a gift of Judith and Dr. Max Robins.




SUPPORT THE FUTURE OF TEMPLE ISRAEL



When planning a legacy gift, it's sometimes difficult to determine what size donation will make sense. One flexible option is to give a percentage of your estate. By leaving Temple Israel a percentage of the assets in your will or trust—from 1 to 100 percent—you have a stake in our educational and spiritual goals. This allows your gift to remain proportional to your estate size.

We are thankful for every single gift to Temple Israel, *no matter what size*. Your generosity strengthens our mission and honors your values, giving you the joy of making a powerful impact on future generations.

We are here to help if you have any questions about extending your impact into the future. Visit temple-israel.planmygift.org to learn more. For a personal and confidential conversation, call David Tisdale at (248) 661-5700, or email him at dtisdale@temple-israel.org.



This information is not intended as legal or tax advice. Please consult your legal and tax advisors. Individual state law may impact your results.

THANK YOU JULIE

FOR SHAPING THE LIVES OF OUR MOST PRECIOUS MEMBERS!

For the past 10 years, Julie Eisman Levy has served as the Director of the Susan and Rabbi Harold Loss Early Childhood Center, shaping the lives of our most precious members—the children of our ECC. The Temple Israel ECC is renowned for offering one of the best preschool educations in the area. However, it's more than just the thoughtful curriculum, innovative programs, and creative projects that our children experience. It's the warm, welcoming environment that enables our kids to feel safe and bring out their best selves every day. This nurturing atmosphere is fostered by Julie's leadership and emulated by her incredible staff.



Julie initially joined Temple Israel in 2000 as the Assistant Director of the Religious School. Over the course of eight years, she held various roles within the Religious School department, including Interim Director and Associate Director, before departing in 2008 to oversee an Early Childhood program in the area. When our ECC Director at the time, Bryna Leib, decided to retire in 2013, Julie felt a strong desire to return to Temple as the Director of our ECC.

Throughout Julie's tenure, she has been dedicated to improving our school. Professionally, she obtained a Master's Degree in Early Childhood Education and completed two Fellowships in Jewish Early Childhood Education. She also secured over half a million dollars in grant funding for the ECC, led the school through rigorous accreditation processes for NAEYC and Great Start, oversaw the addition of a new school wing and playground, and achieved the remarkable feat of keeping our school open for in-person learning during a global pandemic.

Julie's commitment lies in establishing a strong foundation for a love of learning, which is clearly evident in her approach to running our ECC and the radiant smiles on the faces of our children as they enter the building each day. Her passion is contagious, as reflected in the incredible staff members who have devoted themselves to our ECC and the education of our children. Under Julie's guidance, the Temple Israel ECC has enrolled over 1600 students during her tenure. The profound impact that Julie and her staff have made on these students and their families cannot be overstated. As Julie embarks on her next adventure, we will miss her dearly and remain grateful for everything she has accomplished for the families and staff of the ECC.



**We cordially invite you to join us
in celebrating Julie's extraordinary contributions
with a special ice cream oneg after services on
Friday, August 18th.**



In Review: *Baby Bunch* (left photo) & *Shabbat Shaboom* (right two photos)

SUMMER CLASSES: REGISTRATION STILL OPEN!

Delightful weekly classes for babies and toddlers with a parent, grandparent, or caregiver. Call the ECC Office (248-661-5750) to register. Fall schedule forthcoming.

Temple Tots (17-36 months): Come and play with your toddler in a fun class that offers group time, music, movement, and sensory play! A variety of activity stations including many sensory experiences will encourage development through play.

Baby Bunch & Beyond (6-16 months): Looking for something fun to do with your littlest family member? Bring your baby to this fun class that offers weekly circle time, bubble play, and Shabbat celebration!

Challah to Hamentashen (18-48 months): Join us for a Jewish cooking class for parents, grandparents and their children. Prepare kid-friendly recipes. While our creations are baking enjoy singing, story time, and a yummy snack!

Tunez 4 Totz at Temple (0-24 months): Children's music class run by internationally acclaimed vocalist and songwriter, Jesse Palter, focusing on creating a sensory experience to encourage love of music for children.



FAREWELL DOES NOT MEAN GOODBYE

The ECC is going to miss Leslie Fishman as she steps away from her role as Lead Teacher in the Toddler 2s program after 8 years of dedicated service. Our dear

Leslie has decided that she will be taking at least the next school year off to enjoy life, including the impending arrival of her first grandchild. Leslie's love and joy for teaching is palpable, and everyone who has had the pleasure of having a child in her class would agree. Leslie's contagious enthusiasm and excited energy will be missed. Although we say goodbye to Leslie for now, we are hopeful that she will return to us soon.



HELP FROM AFAR

FUND IN ACTION

In 2019, we partnered with the Chaldean community to provide assistance from a distance. The pressing issues at the border could not be overlooked, and despite being thousands of miles away, we recognized the opportunity to contribute. Thanks to the generosity of both communities, the Help from Afar fund has had a significant and ongoing impact on the lives of refugees seeking safety for themselves and their families in America.

Through this fund, monetary support was sent to our partners in New Mexico, initially starting at Congregation Albert and later evolving into an independent interfaith volunteer organization dedicated to aiding refugees arriving from the border. Entirely reliant on volunteer involvement, they managed to greet up to 200 refugees at a time, ensuring they were provided with housing, clothing, toiletries, medicine, warm meals, and assistance in reaching their sponsors across the United States. All of this was accomplished within a remarkable two-day timeframe, and the process repeated whenever the next bus arrived. While they have not received any buses since the onset of Covid, their commitment to helping the refugee community in New Mexico and supporting organizations working at the border remains unwavering.

The funds also contributed to the establishment of a kitchen inside an apartment located in a church that provided shelter to refugees in need of protection for various reasons. We constructed a beautiful kitchen, and I had the privilege of virtually dedicating a mezuzah on the apartment's door through the magic of Zoom.

Help From Afar also played a role in assisting Afghan refugees who arrived in Southeastern Michigan. We made a donation to the general fund of Jewish Family Services and additionally sponsored one family.

When we assembled 1,000 IFAX (battlefield first aid kits) for the Ukrainian army, the fund helped cover some of the expenses associated with acquiring the necessary materials.

Moreover, when we appealed for housewares for the Ukrainian community, your response was truly remarkable. The overwhelming contributions allowed us to utilize funds from the Help From Afar initiative to rent a U-Haul truck, enabling us to transport a truckload of kitchenware to Ann Arbor. These items were shared with new refugees from various parts of the world who were being settled by JFS Ann Arbor.

Currently, the Help From Afar fund is providing support to HIAS's efforts in aiding Sudanese refugees. HIAS has a presence in neighboring Chad, and our fund is assisting in providing food, shelter, and support to families fleeing violence in Sudan.

Wherever assistance is required around the world, please know that you heeded the call and responded with love and generosity. Your donations are making a tangible difference in the lives of countless individuals each and every day.

With heartfelt gratitude,

Rabbi Jen Kaluzny

TYNER RELIGIOUS SCHOOL

ADULT EDUCATION

For more information on these Adult Education classes, contact the Education Office at 248-661-5725 or email lkaplan@temple-israel.org

SHABBAT TISCH

Saturdays • 9:30 - 11am

Join us for a Shabbat morning of insights and investigation into the texts of our Bible. Led by volunteer facilitator Norrine Freeman.

GATEWAY OF ATONEMENT

Thursdays, July 13, August 17 & 31 • 10:30am

With the High Holy Days just down the road, take a deep look at T'shuvah (atonement) through the lens of Jewish mysticism and the Chassidic masters. Taught by Cantor Smolash. This class will be taught in person only. For students unable to attend in person, the video will also be released at a later date on YouTube. **RSVP to Maya Grinboim at 248-661-5700 or maya@temple-israel.org**

INTRODUCTION TO JUDAISM

Tuesdays from 7-8pm

October 3 – December 12, 2023 - IN PERSON

January 9 – March 19, 2024 - VIRTUAL

Explore Jewish life, values, celebrations, history, theology, and spirituality with Temple Israel's clergy in this 10-week course! Ask questions, discover multiple answers, and find out how Reform Judaism could be meaningful to you.

This course is open to all – interfaith couples, those raising Jewish children, individuals considering conversion, and anyone who just wants to learn more about Judaism! Cost is \$150 per person; \$180 per couple. Students are encouraged to purchase a selection of recommended books. If tuition presents a financial hardship, please contact us. **Register online at www.temple-israel.org/event/intro**

BEGINNING PRAYER FOR ADULTS

Mondays, Oct 2 – Dec 4 • 7-8 pm - IN PERSON

Tuesdays, Oct 3 – Dec 5 • 12-12:30 pm - VIRTUAL

In this 10-week course, students will advance their Hebrew studies with a focus on prayers. We will dive into the meaning of service prayers and improve our reading skills. Prior Hebrew knowledge required. Taught by Sheryl Lederman. 10-week course fee \$75 members, \$125 nonmembers. **Register online at**

www.temple-israel.org/event/AdultHebrew

ADULT BAR/BAT MITZVAH PROGRAM

Monday nights, beginning in October!

The Adult Bar/Bat Mitzvah (ABBM) Program is a rewarding experience for any Temple Israel adult member who never celebrated becoming a Bar/Bat Mitzvah. This exciting, two-year study opportunity will provide participants with the skills needed to unlock the secrets of the Torah and be able to read from our most sacred scroll. One hour of the class will be dedicated to learning about Jewish theology, prayer, Jewish holidays, life cycle events, traditions, customs, history, and values. The remainder of the class time will be dedicated to learning Hebrew. By the end of the two-year experience, participants will lead a Shabbat service, which will include reading from the Torah and Haftarah. Total Fee: \$750 (covers both years). Students must be members of Temple Israel to take part in this life cycle event. **RSVP to Lisa Kaplan in the Education Office at 248-661-5725 or lkaplan@temple-israel.org**



Create. Grow. Learn.

REGISTER FOR RELIGIOUS SCHOOL TODAY!

At Temple Israel's Tyner Religious School, Jewish values come to life. Students not only learn about our Jewish history and traditions but live the values we are taught in ancient literature.

For the 2023-2024 School Year we are excited to build on our exciting, experiential, and innovative learning experiences for all grades.

Registration deadline – August 21, 2023

Questions? Contact the Education Office at 248-661-5725.

WWW.TEMPLE-ISRAEL.ORG/TYNER

or scan QR code here ▶▶▶



GRADES K-3: Sunday mornings from 9:30 -11:30am

Students will focus on Jewish values, holidays, Torah stories, and Israel. Regular family education programs encourage families to live the values we teach.

GRADES 4-6: Sunday mornings from 9:30 -11:30am

Students will focus on Jewish values, holidays, Torah stories, Israel, and Tikkun Olam – making the world a better place. Regular family education programs reinforce the lessons and values students are learning.

Continuing the success of Hebrew in the House, students will meet 1-on-1 with teachers.

GRADE 7: Monday evenings

Student will learn about Jewish Identity, the Holocaust, and Israel.

GRADE 8: Monday evenings

Our successful, experiential 8th grade program meets at Temple Israel and out in the community.

GRADES 9-12:

Our ROOTS program will meet on Monday evenings at Temple Israel as students alternate between grade level learning with rabbis and elective classes that will allow them to grow their Jewish knowledge and prepare them to go off into the world with a strong Jewish identity.





In Review: Sixth Grade Siyum - On Sunday, April 30, our Tyner Religious School Sixth Grade students celebrated their learning at the Sixth Grade Siyum. Rabbi Kaluzny explained to our families that this is a transition from "sixth to service." Students were reminded that they are not only preparing for their upcoming Bar and Bat Mitzvah services, but they should also look for ways they can serve their community. Families had the opportunity to create a glass fused tzedakah box with representatives from Gail Kaplan's art studio. The ceremony included students reading reflections about their favorite memories from Religious School. The program concluded with families coming around open Torahs and students locating the Torah portions they will be studying. It was a special and meaningful morning!



In Review: Last Day of Religious School (2022-23) - Students in Kindergarten through sixth grade completed the 2022-2023 school year at Religious School on May 7, 2023. All classes participated in an Israel map activity with our Shinshinit, Lihi and teacher, Robin Danto. The students had the opportunity to find different places on the Israel map and learn different facts about Israel. One fact we all learned was that Israel is small enough to fit inside the state of Michigan! All classes enjoyed a lively final assembly with a slide show of memories from the year. We ended our assembly with a super energetic and fun conga line while we sang, "Sweet as Honey," commemorating the sweet learning we have done this year!

MUSIC AT TEMPLE



In Review: Laker Concert: "Like A Rolling Stone" - Bob Dylan's American Mythology - Elite musicians and singers from New York and LA came together in a tribute to the music of Bob Dylan. Sponsored in loving memory of Sarah & Harry Laker.



In Review: Schmier Concert Verona Quartet - Hailed by the New York Times as an "outstanding ensemble," the Verona Quartet showcased their remarkable talent as a string quartet. Supported by the Regene & Leslie Schmier Concert Series Endowment Fund.

In Review: Schmier Concert Henry Kramer - Henry Kramer, a world-renowned pianist and true virtuoso, captivated the audience with his exceptional performance. Supported by the Regene & Leslie Schmier Concert Series Endowment Fund.



COMING SOON

Zipser Foundation Artist in Residence
AARON MARKOVITZ
 NEW ALBUM WILL BE RELEASED
 FALL - 2023



AFFILIATES - WOMEN OF TEMPLE ISRAEL

FORMERLY KNOWN AS TEMPLE ISRAEL SISTERHOOD



Thank you so much for 2 wonderful years. They went by so fast!!!

It has been an honor to serve as Temple Israel Sisterhood President. Thank you to the Executive Board, General Board and Sisterhood members at large for all your

support and hard work to make these 2 years successful. Based on everyone's generous support and fundraising efforts this past year, Temple Israel Sisterhood is excited to announce the following gifts:

- \$23,000 to the Fruit of Our hands Sisterhood Greenhouse, toward our \$250,000.00 pledge. Bringing our total to date \$137,000
- \$472 to the Temple Israel Miriam and Isaac Barr Israel Education Fund: This represents \$118.00 for each of our 4 Women Rabbi's in honor of the 50th Year of Women in the Rabbinate. This gift is to help fight antisemitism in our community
- \$3,250 to Women of Reform Judaism, YES FUND (Youth, Education and Special Projects) qualifying our Sisterhood for the WRJ Roll of Special Merit

These gifts are in addition to the many services and items donated throughout the year, including Prayer Books for Bar/Bat Mitzvah students, school and camp scholarships, Chanukah candles and Hamentashen for our Religious School and Early Childhood Center students. Sisterhood also has many other charitable contributions. This year Temple Israel Sisterhood's annual gifts and contributions total over \$35,000.

L'Shalom,
Andi Weiss



I am very excited to begin this year as your new Women of Temple Israel President. It should be a fabulous year with many wonderful activities planned. With the help of our amazing board, I know it will be a super year! We need

your attendance and encourage you to get more women to join us now that we are meeting in person again. Women of Temple Israel rock! Without you we are one sister short. Looking forward to seeing you again or meeting you for the first time.

L'Shalom,

Jan Kelman - President, Women of Temple Israel

ONLINE GIFT SHOP

Our Fabulous Temple Israel gift shop is available for your shopping pleasure 24/7. We have amazing Judaica and gift items. **July &**

August special - 20% off of Jewelry, Challah Boards, Challah Covers and Knives. Must be over \$25 and in stock; excludes special orders. Touchless pickup is available. Shipping and delivery options are also available.

Shop at: www.templeisraelgiftshop.com

Questions? Call or text Debbie E. at 248-496-4525, Debbie F. at 248-227-2146 or Stacy at 248-894-6617.



ORDER YOUR TRIBUTE CARDS!

Let someone know that you are thinking of them. Women of Temple Israel (WOTI) is pleased to offer a choice of tribute cards to mark your special occasion or remember someone in a time of need. In addition, recipients of tribute contributions of \$50 or more will now receive a beautiful certificate letting them know of your generosity. **Purchase online at www.temple-israel.org/Sisterhood or to purchase by phone, call Debbie Levin at 248-514-9769 or email her: dlevin1218@comcast.net**



Calendar of Events:

JULY 19 | Bingo with Fleischman AUG 19 | WOTI Shabbat
AUG 16 | Bingo with Fleischman OCT 20-22 | WOTI Retreat
AUG 17 | Mahj Jongg Tournament



Women of Temple Israel Executive Board

BINGO WITH FLEISCHMAN RESIDENTS

Wednesday, July 19 & August 16 • 11am

Come and mingle with us on the 3rd Wednesday of each month. We'll join the residents of Fleischman to play Bingo. We can always use more volunteers. **Questions, call Diane Okun at 248-854-1584.**

HONEY FOR THE HOLIDAYS

What better way to wish family, friends and business associates a "Sweet and Healthy New Year" than sending a jar of honey? Ship a festive 8 oz jar of 100% pure Kosher Honey anywhere in the U.S. for only \$14.50 plus FREE SHIPPING thru August 1st, after add \$6.50 shipping per jar (Continental US shipping only). Last day to order for Rosh Hashana delivery is August 25th. Last day to order honey is September 15th.

IT'S A NEW YEAR FOR WOMEN OF TEMPLE ISRAEL

DON'T FORGET TO RENEW YOUR MEMBERSHIP
WWW.TEMPLE-ISRAEL.ORG/SISTERHOOD

Women of Temple Israel, formerly known as Temple Israel Sisterhood, is thrilled to unveil our new name! This rebranding embodies our commitment to fostering an inclusive and empowering community where women can come together to embrace and promote our shared Reform Jewish values. Inspire. Connect. Empower: Join us as we cultivate a vibrant network of women dedicated to making a positive difference through our Temple and affiliation with Women of Reform Judaism.

MAHJ JONGG TOURNAMENT



Thursday, August 17th

Registration open at 6PM

First round at 6:45PM (Sharp!)

\$30 per person (Pre-Registered)

\$35 per person (At the Door)



FOR MORE INFORMATION
SCAN THE QR CODE OR VISIT:

WWW.TEMPLE-ISRAEL.ORG/MAHJ2023



Sisterhood Retreat

The Year of the Woman

FRIDAY-SUNDAY

OCTOBER 20-22

BUTZEL CONFERENCE CENTER, CAMP TAMARACK

\$310 - Regular price (7/1-10/1)

\$385 - Late price (by 10/12)



For more information
scan the QR code or visit:

www.temple-israel.org/event/SisRetreat23

LESSONS
in
CHEMISTRY



Bonnie Garmus

AFFILIATES - BROTHERHOOD

Join Brotherhood at our annual
Scotch and Sirloin dinner.

This is our way of saying
"thank you" to our members for
supporting the programs and
activities that Brotherhood sponsors.

SCOTCH & SIRLOIN BBQ



Thursday, August 10th
6 pm at Temple Israel

Steak & Salmon with all the fixin's!
Brotherhood members in
good standing are free;
\$25 per guest
(Includes dinner and open bar)

RSVP by Wednesday, August 2nd
Register online at
www.Temple-Israel.org/Sirloin

Questions?
Contact Jerry Isenberg: jmisenberg@comcast.net



FROM BROTHER TO BROTHER

As a member of Temple Israel's Brotherhood, you have the opportunity to become involved in our many programs and activities throughout the year. Your membership will enable us to continue our dedication to Tikkun Olam (Repairing the World) through another year of fellowship, programming and community activities. We know your involvement will be a richly rewarding experience. The officers and members of Temple Israel Brotherhood look forward to meeting and working with you. Brotherhood develops and executes programs that benefit the families of Temple Israel. These programs, which enhance the spiritual, social, and educational needs of our members and community, include: Camp Scholarships, College Dinners, Financial Support for Temple Programs, Golf Outings, Members BBQ, Softball, Usher Corp, and Programs with Guest Speakers. We'd love to hear from you. Please contact me at sssbrm@ameritech.net for more information on how you can join our religious, spiritual, educational, and social programs throughout the year. You may also join online at www.temple-israel.org/Brotherhood Click the "Join or Renew Membership" link.

-Steven Achtman (President)

BROTHERHOOD DINNER GATHERING

Tuesday, July 18 • 6pm at Temple Israel

Join our group each month where we will discuss Brotherhood programs, upcoming events, have dinner and schmooze. We look forward to seeing you there. Dinner cost is complimentary for Patron Members and \$15/per person for General Members. **RSVP for dinner is required at** www.temple-israel.org/form/brotherhood-dinner

LIFE CYCLE EVENTS

B'NAI MITZVAH

SATURDAY, AUGUST 12, 2023



CALEB FREDERICK HAUPT, son of Alyssa and Jeff Haupt; grandchild of Sherry and Howard Berris, Shirley Haupt and Clair Haupt z"l. Caleb is a student at Oak Valley Middle School. An accomplished musician, he plays violin and French horn. Caleb also competes in track and field and looks forward to

playing tennis for his high school team. He loves to travel, especially to places where he can rock climb. In addition to volunteering his time building cat condos and donating supplies for Tiny Lions Cat Café in Ann Arbor, Caleb also gave tzedakah to Save the Music Foundation to support music programs in schools. His most meaningful mitzvah project was creating a program with Temple Israel's ECC as a guest speaker, teaching young students about violins.

SATURDAY, AUGUST 19, 2023



ELIZABETH JEANETTE FIKANY, daughter of Marcy and John Fikany; grandchild of Diane Cutler, Mary and Allan Morton, and Jeanette z"l and James z"l Fikany. Elizabeth is a student at Detroit Country Day School. She loves to play softball, field hockey and volleyball. She enjoys singing, theater, cooking,

fashion, spending time with her family and friends, and spending her summers at Camp Tamarack. Elizabeth volunteered her time making sandwiches and delivering food to local pantries with Metro Food Rescue and raised money for Send a Kid To Tamarack to help fund camper scholarships. Her most meaningful mitzvah project was working with Yad Ezra, where she delivered food to homes and helped with holiday distribution working in their warehouse.

FRIDAY, AUGUST 25, 2023



AIDEN JACOB BURNSTEIN, son of Keri and Lee Burnstein; grandson of Judith and Edward Burnstein, Patricia Krentzin, Joseph Selik z"l, and Jeffrey Krentzin z"l. Aiden is a student at Hillel Day School.

He enjoys umpiring, swimming, boating, baking, golfing and spending summers at Camp Tamarack. In addition to volunteering at Temple Israel where he helped pack food for the homeless and first aid kits for Ukrainian soldiers, Aiden also volunteered in the Maker Space helping younger students at Hillel. His most meaningful mitzvah project was baking and selling cookies so he could donate the proceeds to Alzheimer's Association.

TEMPLE FAMILY

Births

Simon Barbas, son of Shannon McEwen Barbas & Brian Barbas; grandson of Lisa & Andrew "Andy" Barbas.

Samuel Ari Goldman, son of Alicia & Bradley Goldman; grandson of Linda & Howard Goldman, Susan & Coby Goutkovitch, and Wendy & David Mendelson; great-grandson of Carole Master.

Noah Arthur Klein, son of Allison & Benjie Klein; grandson of Noreen & Alan Klein, and Esther & Ken Gold.

Eden Lily Parzen, daughter of Stephanie & Jacob Parzen; granddaughter of Ann & Jonathan Podolsky, Stanley Parzen, and Lynne Raimondo z"l.

Wesley Harold Tramer, son of Molly & Joseph "Joe" Tramer; grandson of Sher & Sanford "Sandy" Kaplan, and Jen & Neil Tramer.

Liam Scott Zeitlin, son of Christine & David Zeitlin; grandson of Lisa & Barry Zeitlin and Amer & Nadirah Shammas; great-grandson of Milton Faye and Barbara Allen.

Weddings

Emily Finn, daughter of Harriet and Mark Finn, to Evan Freed, son of Pamela and Ari Freed.

Jami Grauer, daughter of Leslie and Corey Grauer, to Matthew Meltzer, son of Julie and Jeffrey Meltzer.

Emily Lerman, daughter of Freda Baran Lerman & Joel Lerman, to James Ferguson, son of Rebecca Colt Ferguson & James Ferguson.

Emily Rosberg, daughter of Linda and Aaron Rosberg, to Blake Weinberger, son of Michel Holtzman and Robert Weinberger z"l.

Jessica Sherbin, daughter of Karen Rubenfire and Daniel Sherbin, to Daniel Deutsch, son of Susan & David Deutsch.

Dana Siegel, daughter of Deborah (Robert Chonoles) Siegel and Marc (Lori) Siegel, to Benjamin Ueberroth, son of Lisa Ueberroth and William "Billy" Ueberroth z"l.

Margaret Wasvary, daughter of Rebecca and Harry Wasvary, to Connor Schram, son of Amy and Alan Schram.

In Memoriam

Sergeant Miriam Battle, mother of Allen Siegal and Barry (Batya) Siegal; sister of Dorothy Harwood; aunt of Lawrence "Larry" (Debra "Debbie") Harwood.

Mary Blitz, mother of Beverly "Bev" (Michael) Wallace, Dennis (Gayle) Blitz, and Andrew (Lauren) Blitz; grandmother of Brian (Jodi) Tepper, Marla (Andrew) Russell, Lauren Blitz, Dr. Jason (Stacey) Vieder, Brian (Jenny) Vieder, Jodi (Jason) Krefetz, Ricki (Justin) Brockman, Jillian (Nick) Porterfield and Max (Rebecca) Blitz; great-grandmother of Jordyn, Allie, and Noah Tepper, Lily and Rebecca Russell, Carter Altruda, Sam, Gabe and Lindsay Vieder, Jacob, Madeleine and Violet Vieder, Laila, Tatum and Harper Krefetz, Cooper, Benjamin and Billie Brockman, Oliver and Natalie Wallace, and Kobe and Lennon Porterfield; sister of David (Rita) Olshansky and Martin z"l (Pearl) Olshansky; sister-in-law of Frances Sonne z"l, Lillian Markle z"l and Kay Kahn z"l.

Lorraine Canner, wife of Marvin Canner z"l; mother of Steven (Adriana) Canner, Barry Canner, and Barbara (Keith Marshall) Canner-Marshall; grandmother of Seth Canner, Allison Billes, Gregory Billes, Aarian (Samson Schatz) Marshall, Ean Marshall, and Brian Canner z"l; sister of Renee (Richard) Fordyce, Lawrence (Sally z"l) Freed z"l, Harold (Joyce z"l) Freed z"l, and Jack Freed z"l; sister-in-law of Shirley Freed, Bernard Canner z"l, and Herman (Pauline z"l) Canner z"l.

Joel Colman, son of Harriet Colman and Albert M. Colman z"l; brother of Jonathan (Suzi) Colman, Jill (Paul) Ruskin, and Jeffrey (Ellen Nissenbaum) Colman; uncle of Samuel (Chagit) Ruskin, Shoshana (Ari Lev Fornari) Ruskin, Avital Ruskin, Jessica (Eric) Cheng, Zack (Bina) Colman, Jeff (Hien) Ferber, Sandy (Chris) Brine, Nora (Jakob Cohen) Colman and Gabriel Colman.

Mike Cozzetto, husband of Helen Cozzetto; father of Silvio Cozzetto and Lisa (Hicham) Farabi; grandfather of Ilan and Jonah Farabi and Gabriel Cozzetto; brother of Carlo (Mary) Cozzetto and Joe (Mafalda) Cozzetto; brother-in-law of Varda (Paul) Wasser.

Alfred Dangovian, husband of Lorraine Dangovian; father of Ina (Keith) Bornstein, Michael Dangovian, David (Don Thomas) Dangovian, and John Dangovian z"l; grandfather of Allison (Nathan James) Bornstein, Mark Bornstein, Marissa (fiancée Aaron Kerman) Dangovian, and Jake Dangovian.

Edward Dolezel, husband of Anita Dolezel z"l; father of Jason (April) Dolezel; grandfather of Natalie and Carson Dolezel; brother of Katie (Ray) Haydon and Dave (Joan) Dolezel; brother-in-law of Leonard (Annette) Topor and Larry (Karen) Topor; son of Cleo z"l and Faye z"l.

Kenneth Eskovitz, brother of Sandra "Sandy" Eskovitz Maurer, Karen (Lynn) Mills, and Alan (Marion) Eskovitz; cousin of Sanford (Jerry) Aronoff, Mark (Rita) Aronoff; uncle of Matthew (Ashley) Sinkoff, Tyler Eskovitz, Jordan (Elisabeth) Eskovitz, and Jenifer Maurer.

Nicolas "Nick" Gilbert, son of Daniel and Jennifer Gilbert; brother of Grant, Gracie, AJ, and Nash Gilbert; grandson of Shirley and Samuel z"l Gilbert, Murk Goddard, and Pamela and Robert Feldman; nephew of Gary and Charlotte Gilbert, Kevin and Robin Goddard, Andrea Gilbert, Richard and Patti Gilbert, Paul and Desiree Marz, and Alicia Fox.

Charles "Chuck" B. Goldfarb, husband of Judge Sharon Tevis Finch; former husband of Flora Goldfarb; father of Carin Beth (Steven Schreier) Goldfarb, Julie Goldfarb (Jeffrey Rose) Hantman-Rose, and Amy Jo (Jared) Zerman; grandfather of Abigail Hannah Schreier, Harrison "Harry" Alexander (fiancee Amanda Vitale) Hantman Tyler Edward Hantman, Mitchell Baron Zerman, and Adam Elijah Zerman; uncle of Jeffrey (Jane) Goldfarb, Michael (Sherry) Goldfarb, Stuart Schafer, Bruce (Sara) Goldfarb, Cathy (Dan Palubniak) Schafer, Cynthia Goldfarb z"l, and Brian Goldfarb z"l; great-uncle of Anne, David, Megan, and Alexander Goldfarb, April Schafer (fiance Jason Woods), and Jamie Lynn Schafer z"l; son of Harry z"l and Matilda z"l Goldfarb; brother of Arline z"l (Max z"l) Schafer, Albert Goldfarb z"l, and Irwin z"l (Florence z"l) Goldfarb.

Gerald H. Herman, husband of Marilyn Herman; father of Leonard (Shari) Herman, Leslie (Colin Davies) Herman and Lori (Jim) Frye; grandfather of Erica and Rebecca Nowak; great-grandfather of Ryder and Everette; brother of Larry (Mary Ann) Herman and Barbara Fink; brother-in-law of Brenda Kaplan; uncle of Nicole and "Jimmy" James Pollack, Eric and Jennifer Herman, Estelle and Steve Wisniewski, Daryl and Kim Fink and Dale Fink.

Gregg Herman, husband of Cathy Herman; father of Emily (Alex) Horn, Jeffrey Herman (Nicole Barvie), and Daniel Herman (Katie Holland); grandfather of Zachary Horn, and Victoria and Natalia Herman; brother of Richard Herman (Debbie Tyner z"l), Dr. "Jim" James (Brenda) Herman, Ron (Sharon) Herman, and Michael Herman; brother-in-law of Lynn Elliott, Kenneth Agree z"l, and Barbara Herman z"l; son of Arlene and Dr. Morton Herman; son-in-law of Phyllis z"l and Lawrence z"l Agree.

Gordon L. Hollander, father of Dan (Emily) Hollander and Sandra (Greg) Murphy; brother of Bernice (Dennis z"l) Brenner, Harvey (Kimberly Fodero) Hollander, Ella (Jerry) Modell and Erwin z"l (Carole z"l) Hollander; grandfather of Kayleigh (Dan) Pylar, Kelsy Murphy, McKenzie Murphy, Arianna Hollander and Jacob Hollander; great grandfather of Jack.

Paul Katzman, husband of Lois Katzman; father of Alisa ("Jeff" Jeffrey) Ambrose, David (Heather) Katzman, Heidi (Hank) Wineman, and Steven (Elizabeth) Katzman; grandfather of Michael (Lauren) Ambrose, Cortney (Seth) Barnett, Shelby Dotan, Deni (Matt) Kibort, Jane Wineman, Jack Wineman, Jordan (Alex) Katzman, Rachel and Adam Katzman, Kendra Katzman, Nicole Katzman, Randi Katzman, Noah Katzman, Henry Katzman, Ben Katzman, and Harlow Katzman; great-grandfather of Mason Ambrose, "Rose" Rosie and Summer Barnett, Leon Dotan, and Alon Dotan; son of Hyman z"l and Ida z"l Katzman.

Sheldon L. Klein, husband of Terra Klein; father of Lunar Klein, Thomas (Deana Thibodeau) Klein and Rue Klein; son of Ruth z"l and Milton z"l Klein; brother of Dr. Mark and Marsha Klein, Mindy Ellis and Jesse Underwood, Mitchell and Marlowe Klein, Michael Schoenfeld z"l and Dallas Ellis z"l; uncle of Rachel Goldman, Jamie Klein, Chris Ellis, Lumen (Shawana Queen) Klein, Hannah (Zack Dandy) Klein, Alexa (Nicole Prabel) Klein, Heather (Paul) Smith and Shelby Schoenfeld; great-uncle of Sadie Goldman, Mira Goldman, Dyllon Ellis, Harlow Dandy, Hendrix Dandy, Violet Smith and Wednesday Schoenfeld.

Jay Korelitz, husband of Paula Korelitz; father of Seth (Sheryl) Korelitz and Mara Rosenthal; brother of Ronnie Korelitz and Debrah Joseff; brother-in-law of Mort Noveck; grandfather of Hannah Korelitz and Yosef Brander, Lucie Rosenthal, Zoe Korelitz, Eddie Rosenthal, and Reggie Rosenthal; father-in-law of Alan Rosenthal and Philip Okun; uncle of Justin and Katy Joseff, Brian and Nicole Naumann; great-uncle of Benjamin Joseff and Annalise Joseff, Susan and Tom Finley, and Michael and Lori Babin.

Janet Kover, wife of David Kover z"l; mother of Mark (Karen) Kover, Kathy Leeman, and Joan (Milton) Levine; daughter of Mary z"l and Harry z"l Simon; sister of Frances Goldberg z"l, Sylvia Wachtel z"l, Raenette Simon z"l, and Howard Simon z"l.

Marsha Kowal, sister Brenda (Skip z"l) Kovinsky and Bonnie Kowal z"l; niece of Sandra "Sandy" Tuttleman; aunt of Milton and Cheryl Kovinsky, Matthew and Anna Kovinsky.

Fern Lutz, wife of Sam Lutz z"l; mother of Candy (Terry) Rosen, Lee (Susan) Lutz, and Lauren (Dr. Mark) Rosenberg; grandmother of Jeffrey "Jeff" (Rebecca) Van Loon, Dr. Heather (Andrew) Daitch, Jerod Lutz, Jodie (Brian) Elsberg, Scott Lutz, Dr. Gary (Dr. Brooke) Rosenberg, Daniel (fiancée Felicia Jacobvitz) Lutz, and Melissa (fiancé Kevin Carr) Lutz; great-grandmother of Alexandra and Joel Van Loon, Emily, Sam, Jillian, Carly, Logan, Levi and Kennedy.

Rita Levitt, wife of Howard Levitt z"l; mother of Dr. Jeffrey ("Tracy" Theresa) Levitt, Dr. Brian (Kathy) Levitt, and Jay Levitt; grandmother of Lauren and Adam Levitt, Gregory (fiancée Nicole Brand) Levitt, and Alexander Levitt z"l; sister of Fred (Ida) Herbst z"l and Dr. Harold (Joanne) Herbst z"l.

Lillian Meyers, wife of Leonard Meyers z"l; mother of Stuart A. (Rebecca) Meyers and Beverley R. Meyers; grandmother of Alex Meyers and Matthew Meyers; sister-in-law of Eleanor Meyers and Lilian Atkins; aunt of Rochelle Meyers, Brian Karbel, Debbie Grossman, Bruce Meyers, Howard Meyers, Steven Karbel, Barbara Samuels, and Bruce Atkins; cousin of Carol Lash, David Stutz, Judy Stutz, and Ellen Kaplan.

Gloria Sharon Miller, wife of Frederick "Marty" Miller z"l; mother of Kim (Rob) Kaplan, and Lee Miller; grandmother of Julie (Andrew) Prussack and Danielle (Douglas) Cabell; great-grandmother of Ethan and Hannah Prussack, and Lucy and Mason Cabell.

Jean Million, wife of Peter Million z"l; mother of David Million, Susan (Dewey) Loselle, Charles Million z"l and Carol Million Raf z"l; grandmother of Katie Loselle, Jeffrey (Christine) Loselle, Brian (Kelly) Raf, Mindy (Antonia Predovan) Raf, Stacey (Jon) Graff, and Michelle Burke; great-grandmother of Seven.

David Moran, husband of Barbara Moran z"l; companion of Sharon Balamut; father of Lauri (Robert) Levine, Julie (Allen) Zuppke and Cindy (Patrick) Donohue and Ronda Klomp z"l; grandfather of Matthew Donohue, Katie (Phillip) Lowran, Jordan (Fiancee' Rachel Goutman) Zuppke, Adam (Stacy) Zuppke, Ricky (Fiancee' Molly Gross) Levine and Cole Levine; stepfather of David (Debbie) Jacobs, Michael Jacobs, and Jerry Jacobs; uncle of Jayme Fishman.

Leonard "Lenny" Morris Nagel, husband of Raechel Modell Nagel; father of Michelle (Robert) Kleiman and Dr. Rodney Nagel; grandfather of Jordan Kleiman, Erica (Charlie) Givens, Haley Nagel, and Hannah Nagel; great-grandfather of Gillian Harlow Givens; brother of Samus 'Sy' (Penny z"l) Nagel z"l; brother in law of Jerry and Ella Modell, Trudy Modell (Stan z"l) Berlin, Marcia Modell (Steven) Meyers z"l, Florence Modell (Sol z"l) Leider z"l, Rose Modell (Ben z"l) Matz z"l and Lily Modell Goldstein z"l.

Ronnie Pikstein, wife of Daniel Pikstein; mother of Adam Mitchel, Jason (Christine) Pikstein, Marla (Joshua) Linderman-Richelew; grandmother of Zenah (Jonathan) Skidmore, Yakirah Mitchel, Naomi Richelew, Joshua Linderman, Avivah Mitchel and Jonathan Pikstein; sister of Norman White.

Norman Rosenberg, husband of Ina Rosenberg z"l; father of Dr. Mark (Lisa) Rosenberg and Robin Bloom (Richard Bloom z"l); grandfather of Ryan Rosenberg, Jenny and Andrew Moel, Courtney and Evan Malkin, and Alex and Rick Rigutto; great-grandfather of Monroe and Briar Malkin; brother of Milton Rosenberg z"l and Jack Rosenberg z"l.

Marilyn Joy Rosenfeld, wife of Stanley Rosenfeld z"l and Edward Goodman z"l; mother of Jason (Michelle) Rosenfeld and Eric Rosenfeld; grandmother of Sydni, Rylie and Taylor Rosenfeld; stepmother of Marci Goodman Brill, and Steve (Asmina) Goodman; step-grandmother of Hesham Goodman; sister in law of Shay and Sheryl Rosenfeld, Marcy Tucker and Marty Rosenfeld z"l, Risa and Robin z"l Borr, Stuart Friedman and Suzanne Schuelke; aunt of Josh Rosenfeld, Elizabeth and Andrew Doyle, Megan and Zack Bello, Isabelle Borr, Jessica and Eric Cheng, Bina and Zack Colman; great-aunt of Logan Doyle, Charlye Bello, Talia Cheng, Aiken Colman, and Jae Colman.

Matilda "Tillie" Ross, wife of Harry Ross z"l; mother of Anita (Andrew) Hack, Barbara (Jeffrey) Dworin and Howard (Maria) Ross; grandmother of Michael (Sarah) Hack, Julie (David) Hubbard, David (Aly) Dworin, Heidi (Max) Fineblum, Amy Dworin, Jonathan (Meghan Kaple) Dworin and Sarah Ross; great-grandmother of Bella Hubbard, Brody Hubbard and Bruno Hubbard, Ezra Hack and Emerson Hack, Eva Dworin, Jonah Dworin, Teddy Dworin, and Perry Jacob Fineblum.

Mandell Schane, husband of Rachel Schane z"l; father of Pamela (David) Lanning and Evelyn Schane (Jimmy Merlo); grandfather of Jael Holzman, Joseph Holzman, Joshua Merlo, and Makayla Merlo; brother of Dr. David (Sylvia z"l) Schane z"l, Anna (Ted z"l) Curtis z"l, and Ernie (Dorothy z"l) Curtis z"l; uncle of Mark (Laurie) Blinder; son of Morris z"l and Miriam z"l Schane.

Lillian Stein, wife of Martin Stein z"l; mother of Mark (Judy) Stein z"l, Gordon Stein z"l, Keith (Ilene z"l) Stein, Kevin Stein, and Adam Stein z"l; grandmother of Jaime (Jesse) Rohdy, Kathy (Dave Jarrar) Stein, Dr. Melanie (Eric) Morrow, Scott Stein, Jenni (fiancée Eric Klug) Stein, Jennifer Silver, Jason (Nicole) Stein, Jorge Davis and Raegan (Jason) Ware; great-grandmother of Alyssa Sanderson, Chloe Rohdy, Lillian Rhody, Ezra Morrow, Johnny Glen, Levi Morrow, Caden Silver-Stein, Jazlyn Davis, Theo Stein, Jack Stein and Raelyn Ware; sister of "Jerry" Gerald ("Lorry" Loretta) Cooper, Sharon (Richard) Bockoff, Eileen (Joe z"l) Treblin z"l, Sylvia (Ted) Ring z"l, and Dorothy (Jack z"l) Shapiro.

TRIBUTES

LARRY ABRAMSON JUNIOR CHOIR FUND

Provides Junior Choir Awards and other programs.

In Honor Of:

In appreciation of Cantor Michael Smolash – Kaplan-Rudolph Family

ADMINISTRATOR'S DISCRETIONARY FUND

For charitable purposes.

In Honor Of:

Mazel Tov on the marriage of Julia Friedman to Evan Steinberg – Jodi and Rob Goodman

In appreciation of Temple Israel Staff – Rebecca Emmer

In Memory Of:

Frances Finsilver – Janis and Eric Schiffer

Charles Goldfarb – Linda and Dennis Deutsch; Kay Hansen; Mrs. and

Dr. Barry K. Lewis; Eileen Hyman; Wayne County Prosecutor's Office

Gregg Herman – Carin Goldfarb and Steve Schreier

Carolyn Weisberger – Dorene and Alan Finer

ADULT ISRAEL PILGRIMAGE FUND

Supports Temple Israel pilgrimages to Israel for adults.

In Memory Of:

Frances Finsilver – Sandi and Gary Faber

GEORGE & SHIRLEY AGREE CARING COMMUNITY FUND

Provides birthday parties for residents of nursing homes, orphanages, and shelters.

In Honor Of:

Mazel Tov on the birth of Nate – Arlene and Rick Agree

In Memory Of:

Beloved Doug; Beloved Father of Michael – Shelli Feinberg and

Harold Etkin

Fran Finsilver – Mara and Andrew Moss

Marking Yahrzeit Of:

Harry Aaron Scheinfeld – Samuel Scheinfeld

APPEL FAMILY CONCERT FUND

Provides funding for an Annual Music Program.

In Honor Of:

In appreciation of Rabbi Arianna Gordon; In appreciation of Rabbi

Marla Hornsten; In appreciation of Rabbi Jennifer Kaluzny; In

appreciation of Rabbi Jennifer Lader – Elaine and Bob Appel

DONNA & ALLAN APPLE FUND FOR CHILDREN WITH SPECIAL NEEDS

Provides madrachim support for children with special needs.

In Honor Of:

Mazel Tov on the 60th wedding anniversary of Nancy and Mike Bank – Donna and Allan Apple

Mazel Tov on the special birthday of Stephen Gutman – Phyllis and

Gary Levitt

Mazel Tov on the Bat Mitzvah of Bayla Kaluzny – Barbara and Dan Abramson

Mazel Tov to Sue and Harvey Kutinsky on the marriage of your daughter – Sheila Lipschutz

In Memory Of:

Paul Katzman – Jake Kroll

Michael Rolnick – Barbara and Stephen Gutman

Fred Schatz – Barbara and Stephen Gutman; Julie Hennessey

Lillian Stein – Donna and Allan Apple

DONNA & ALAN ASP EMERGENCY ASSISTANCE FUND

Provides emergency assistance to Temple Israel members in crisis.

In Memory Of:

Charles Goldfarb – Barbara and Marshall Disner

Marking Yahrzeit Of:

Miriam Goldman; Gerald Trager – Harriet Trager

BARBAS FAMILY FUND

Provides program funding for empty nester adults.

In Honor Of:

Mazel Tov on the 50th wedding anniversary of Mr. and Mrs. Andy Barbas – Eileen and Jerry Isenberg

MAURICE EDWIN BARR HEBREW SCHOLARSHIP FUND

Provides engraved Bibles to two outstanding 8th grade students.

In Honor Of:

Mazel Tov on the Confirmation of Lily Rodgers – Cynthia Kirman Mallin and Eileen Kirman

MIRIAM & DR. ISAAC BARR ISRAEL EDUCATION FUND

To preserve the legacy of Miriam (Miri) Barr (Mania Lieder), a Holocaust survivor and, by inference, the Holocaust Jewish experience. She believed: 1. Israel is the core of Jewish existence, 2. Antisemitism must be challenged, 3. We must be proud of our Jewish heritage and teach to respect our history and core values.

In Honor Of:

In appreciation of Rabbi Arianna Gordon; In appreciation of Rabbi Marla Hornsten; In appreciation of Rabbi Jennifer Kaluzny; In appreciation of Rabbi Jen Lader – Women of Temple Israel

MARY LOU & GARY BERNDT MINYAN FUND

Supports minyans at Temple Israel.

In Honor Of:

Wishing a speedy recovery of Charlotte Arbit – Elaine and Dr. Frank Roth
In Memory Of:

Fred Schatz – Sheri and Jay Abramson; Ron Applebaum & Family; Charlotte Arbit; Phyllis Barmak and Saul Fern; Joyce and Ronald Barnett; Carolle Baskin; Hadas and Dennis Bernard; Bernice Betman; Edie Broida; Sue and Burton Brodsky & Family; Marla and Mark Canvasser; Shelley and Bob Cohn; Robert Finvarb and Rochelle Finvarb; Lois Frank; Gail and Larry; Amy and Dean Gilbert; Susie and Jerry Gold; Stacy and David Gordon; Nancy and Peter Gross; Roz Hayes; Susie and Lanny Jacobs; Susan Weiss, Lauren Hofing, and Howard Jaffe; Nancy and Jim Jonas; Rachel and Sheldon Kapen; Debi and Larry Kaplan; Sara Kellerman; Julie and Nick Tsouris, Sheryl Stollman, Susie Kellman & Family; Anna and Yale Levin; Sheila Lipschutz; Cynthia K Mallin; Sandra Matthews; Doreen Millman; Samantha Fisher and Jessica Pascal; Judith Robins; Barb and Dick Rosenthal; Elaine and Frank Roth; Rena Singer, Marci and Steve Rotenberg & Family; Joseph Rothstein; Debbie Rottman; Barbara and Allan Salzman; Suzanne Schatz; Marcie and Marc Schechter; Renee and Paul Schreiber; Mary and Burt Schwartz; Simona Seiderman; Debbie and Howard Sherman; Barbara and Steven Shumer; Cheryl Silverstein; Lois and Barry Simon; Karen and Jack Singer; Edie Slotkin; Brenda and David Steuer; Phyllis and Steve Strome; Joanne and Greg Szalai; Renay and Les Taub; Paula Taub; Larry Traison; Gail DeRoven Warren; Esther Wexler

BARBARA E. BERNSTEIN MEMORIAL FUND

Provides support to families and individuals suffering a bereavement.

Provides assistance for Family Camp.

In Memory Of:

Claire Grossberg – Linda Sterns
Peter Trepeck – Sylvia Harris

BARBARA & DOUGLAS BLOOM SPECIAL NEEDS FUND FOR SINGLE MOTHERS

Provides assistance to single moms in crisis who are Temple Israel members.

In Memory Of:

Fran Finsilver – Barbara Bloom; Diane Schmier, Leslie, Julia, and Luke Marton

DAVID & JEAN BRENNER MEMORIAL SCHOLARSHIP FUND

Provides a graduating senior from the Temple Israel High School with a stipend to purchase textbooks.

In Memory Of:

Marilyn Rosenfeld – Judy Mintz

TEMPLE ISRAEL BROTHERHOOD FUND

Supports Temple Israel Brotherhood programming.

In Honor Of:

Mazel Tov on the 80th birthday of Bob Milstein; Mazel Tov on the 80th birthday of Frank Wolff – Margie and Bob Franklin
Mazel Tov on the Bar Mitzvah of Shane Michaels – Kerry and Brian Karbel

In Memory Of:

Lorraine Canner – Shellie and Steven Achtman
Jean Million – Temple Israel Brotherhood

MARLENE BUDMAN REMEMBRANCE GARDEN FUND

Plants spring flowers annually on the grounds of Temple Israel.

In Honor Of:

Mazel Tov on the birth of Willa – Ellen and Marc Whitefield

In Memory Of:

Marlene Budman – Linda and Bobby Schmier
Fran Finsilver – Shelly and Brian Marks & Bob Budman; Susan Cohen; Pam Nadler and Mark Sickles
Carolyn Weisberger – Norma Zager

COURTNEY LISA CANTOR z"l ISRAEL TRAVEL SCHOLARSHIP FUND

Provides funds for youth travel to Israel.

In Honor Of:

Mazel Tov on the Bat Mitzvah of Hannah Ben – Pat and Bob Baer; Sharon F. Block; Barbara Dubb; Linda and Joel Garfield; Rhoda Paull; Yolanda and David Tisdale

Congratulation Tobey Berger on your Graduation from MSU; Wishing a speedy recovery of the granddaughter of Linda and Joel Garfield; Wishing a speedy recovery of Rebecca Jerris – Sherry Cantor
Mazel Tov on the Bat Mitzvah of Bayla Shy Kaluzny – Betty Lou Lowenthal

Mazel Tov to Mrs. and Dr. Laurence Miller on the Bar Mitzvah of your Grandchild – Sharon and Larry Gursten

In Memory Of:

Evelyn Cantor – Pat and Bob Baer; Lorie Savin and Adam Larky
Fred Schatz; James Szkrybalo; Carolyn Weisberg – Sherry Cantor

CANTORS' DISCRETIONARY FUND

For charitable purposes.

In Honor Of:

Mazel Tov on the High School Graduation of Elliana Michaels – Shari and Stan Finsilver; Rochelle Meyers
In appreciation of Cantor Neil Michaels – Ida and Louis Goutman; Les and Bob Iwrey

Mazel Tov on the Bar Mitzvah of Shane Michaels – Pat and Bob Baer; Rochelle Meyers; Debbie Rottman

Mazel Tov on the High School Graduation of Ayla Smolash – Shari and Stan Finsilver

In appreciation of Cantor Michael Smolash – Flora Goldfarb; Les and Bob Iwrey

Mazel Tov on the marriage of Julia Friedman to Evan Steinberg – Kathy and Alan Schwartz

In Memory Of:

David Biederman – Carmen Biederman
Blanche Crane – Barbara Frenkel
Alfred Dangovian – Nancy and Ron Rechter
Matt Aller-Lutwin – Margi and Harry Weinhaus
Lillian Meyers – Debbie Levin and Larry Snider

Marking Yahrzeit Of:

Joseph Yendick – Albert Yendick

CARING COMMUNITY FUND

Supports the programs of Temple Israel's Caring Community.

In Honor Of:

Mazel Tov on the special birthday of John Apfelbaum – Susan and Stuart Levine

Mazel Tov on the retirement of Dr. Jack Belen – Roz and Leon Levine
In appreciation of Rabbi Joshua Bennett; In appreciation of David Tisdale – Nancy and Harvey Lash

Mazel Tov on the Bar Mitzvah of Ari Bigelman – Joyce and Dr. Steven Swedel

Mazel Tov on the birth of Nava Sofia Hoffman – Morielle and Eric Hoffman
Mazel Tov on the 80th birthday of Sheila Schiffer – Yolanda and David Tisdale

Mazel Tov on the 50th wedding anniversary of Dr. and Mrs. Allen Weinberger – Cheryle Lutwin

In Memory Of:

Michael Cohen – Susie and Jerry Gold
Joel Colman – Elizabeth LaKritz
Francis Finsilver – Diane Gutman and Jeff Janower; Sheila Lipschutz; Carolyn and Steven Marks; Linda Baron Weiss
Charles Goldfarb – Ryan Family
Dr. Joel Grand – Rhonda and Steven Satovsky
Jackie Heller – Susan and Stuart Levine; Carolyn and Steven Marks
Jay Korelitz; Helen Wachler – Carolyn and Steven Marks
Marilyn Joy Rosenfeld – Shirley Halprin; Susan and Jules Myerson
Fred Schatz – Trudy Rubinoff; Linda Baron Weiss
Don Shane – Rosellen and Steven Sallen
Peter Trepeck – Carol Sue and Stephen Coden
Carolyn Weisberger – Shari and Stan Finsilver
Barbara Zolkower; Leon Zolkower – Carolyn and Steven Marks; Ellen and Leland Seiss

DOROTHY & ARNOLD COLLENS FAMILY EVENT FUND

Provides funding for family programming.

In Honor Of:

Mazel Tov on the special birthday of Arnie Collens – Barbara and Barry Grant

In Memory Of:

Fran Finsilver – Dorothy and Arnie Collens

CONCERT/LECTURE FUND OF TEMPLE ISRAEL

Assists in the support of concerts and lectures at Temple Israel.

In Honor Of:

In appreciation of Cantor Neil Michaels; In appreciation of Cantor Michael Smolash – Shari and Stan Finsilver
Mazel Tov on the Graduation of Elliana Michaels; Mazel Tov on the Bar Mitzvah of Shane Michaels; Mazel Tov on the Graduation of Ayla Smolash – Carolyn and Steven Marks

Marking Yahrzeit Of:

Leo Rochkind – Marcia Freedman

CAROL R. Z"l & GERSH I. Z"l COOPER SCHOLARSHIP FUND FOR CAREERS IN HEALTHCARE

Provides scholarships for those pursuing a career in health care.

In Honor Of:

In appreciation of Adam Cooper – Aidan Hagelgans

ETHEL & ROBERT DANTO CHILDREN'S LIBRARY & MEDIA CENTER FUND

Provides annual support for the Hodari Family Children's Library and Media Center.

In Honor Of:

Mazel Tov on the Bar Mitzvah of Asa Phelps Robinson – Pat and Bob Baer

In Memory Of:

Susan Rita Chapnick – Pat and Bob Baer
Peter Trepeck; Martin Weitz – Ann Lambert

ARTHUR DUBIN CHILDREN'S SPECIAL NEEDS SCHOOL FUND

Aids families with children with special needs.

In Memory Of:

Rick Collins; Lillian Stein – Art Dubin and Howard Dubin
Frances Finsilver – Art Dubin and Howard Dubin; Cheryl and Mark Tice
Chuck Goldfarb; Jack Koppersmith – Nancy and Jim Jonas
Fren Lutz; Fred Schatz – Bill Rosen

ZACHARY M. TALAN EDELSON MACCABI SCHOLARSHIP FUND

Provides scholarships for Temple Israel Maccabi participants.

In Honor Of:

Mazel Tov to Judee and Richard Lewis on the birth of your grandson – Linda and Andy Jacob

In Memory Of:

Charles Benjamin – Danny Benjamin

AUDREY & WILLIAM FARBER EDUCATION FUND

Supports educational programs at Temple Israel.

In Memory Of:

Edyth Lebovitz – Susan and David Shepherd

ANNE & EDWARD FIENMAN COLLEGE SCHOLARSHIP FUND

Provides a college scholarship to a graduating senior from Temple Israel Religious School.

In Honor Of:

Mazel Tov on the Bar Mitzvah of Charlie Bassey – Susan and Danny Kaplan; Esther Stillman

Mazel Tov on the special birthday of Ben Fienman – Susan and Danny Kaplan

In Memory Of:

Peter Trepeck – Mindy and Gary Roberts

DR. JOEL FORMAN FAMILY CHALLAH ROLL FUND

In Memory Of:

Wendy Dorf – Barbara Frenkel

JACQUELINE R. FOX TORAH STUDY & SCHOOL SCHOLARSHIP FUND

Provides school scholarships and funding for the Torah study class.

In Honor Of:

In appreciation of Deb Schiffer – Rochelle Kaplan-Rudolph

RABBI LEON FRAM z"l SCHOLARSHIP FUND

Supports the Temple Israel's Religious School and Nursery School scholarships and programs.

Marking Yahrzeit Of:

Barry Kadans – Jennifer and Jeffrey Kadans

JASCHA GELMAN MEMORIAL FUND

Provides funding for Israel trip scholarships.

In Honor Of:

Mazel Tov on the Graduation of Emma Coden; Mazel Tov on the Graduation of Emily and Noah – Marcie Coggan

GENERAL GIFTS FUND

Provides general financial support of Temple Israel.

In Honor Of:

In appreciation of Rabbi Arianna Gordon; In appreciation of Rabbi Marla Hornsten; In appreciation of Rabbi Jen Kaluzny; In appreciation of Rabbi Jen Lader – Elissa and Danny Kline
In appreciation of Rabbi Harold Loss – Janelle and Matthew Levin
Mazel Tov on the special birthday of Jeff Moss – Caryn and Harold Rothenberg

In appreciation of Temple Israel Clergy and Staff – Anonymous

In Memory Of:

Blanche Crane – Vivian and Michael Sanfield
Frances Finsilver – Blue Summit Supplies; Stephen Carson; Kim and Gary Goodman; Carol and Gary Hurand; Joy Nachman; Pam and Mark Rosenblum; Julie and Adam Rothstein; Linda and David Rouff; Carol Rubenfaer; Bluma Schechter; Sally and Lou Soverinsky
Charles Goldfarb – Sharyl and Alan Ackerman & Family; Marcia and Agustin Arbulu; Paul Bastas; Nicholas Florio; Jacqueline George; Vanig Godoshian; Jodi Goodman; Lauri Elias and James Murphy; Barbara Newman Zack and Norman Rubin; Linda and Marc Siegler; Delphine and Thomas Troszak
Gloria Handelsman – Eileen Hyman
Jay Korelitz – Sandra Kresch
David Moran; Norman Rosenberg – Caryn and Harold Rothenberg
Peter Trepeck – Doris Taxe
Marking Yahrzeit Of:
Barry Goldstein – Nancy Goldstein; Leah McMillan
Deborah Miner – Leah Klein and Howard Berenbon

DR. FREDRIC z"l & LINDA GOLD NEWLYWED MEZUZAH FUND

Provides a new Mezuzah and scroll to all newlywed couples blessed by our rabbis.

Marking Yahrzeit Of:

Fredric Gold – Linda Gold

DR. ROBERT B. GOLDBERG z"l NURSERY SCHOOL PROGRAM FUND

Provides funding for Early Childhood Center programming.

In Memory Of:

Sam Herman – Donna and Philip Rosen

ALBERT GOODMAN COLLEGE SCHOLARSHIP FUND

Provides tuition assistance to a graduating senior of Temple Israel's Religious School.

In Memory Of:

Perry Weinraub – Teri Goodman

ARNIE GOODMAN z"l MEMORIAL FUND

Provides funding for educational programming for parents, educators, and the community.

In Memory Of:

Barry Singer – Cindy and Randy Sternberg

GOODMAN FAMILY JUDAICA MUSEUM FUND

Provides funding for the Temple Israel Judaica Museum and its programs.

In Honor Of:

Mazel Tov on the High School Graduation of Avery – Natie and Alan Reinstein

Mazel Tov on the Bat Mitzvah of Madelyn Fienman – Janet Strote

In Memory Of:

Marsha Susan Feldman – Teri Goodman

Frances Finsilver – Linda Weitz

DAVID & STACY GORDON FAMILY "DO GOOD FUND"

Supports programming at Temple Israel that benefits the greater good of our community geared toward social action endeavors.

In Honor Of:

Mazel Tov Jacob Gordon on earning your MBA – Laini and Larry Freed

In Memory Of:

Dr. Fred Averbuch; Connie Drescher; Richard Green; Linda Ruby – Mindy and James Aronovitz

Fred Schatz – Jordan Schlechter

HAROLD GOTTLIEB CAMP TAMARACK SCHOLARSHIP FUND

Provides need-based campership for Temple Israel children attending Camp Tamarack.

In Honor Of:

Mazel Tov on the Bar Mitzvah of Charles Bassey – Barbara and Erwin Gutenberg

In Memory Of:

Marsha Kowal – Bayle and Erwin Gutenberg

PHYLLIS HELLMAN CHILDREN'S LITERATURE FUND

Provides support to Temple Israel's media center.

In Honor Of:

Mazel Tov on the 90th birthday of Bill Hellman – Kenneth S. Baer

AVIVA PEARL HERMAN z"l MEMORIAL SHARE FUND

Provides support to those who have experienced miscarriage, stillbirth, or infant loss.

In Honor Of:

In appreciation of Rabbi Jennifer Kaluzny; In appreciation of Cantor Neil Michaels – Laura and Dr. Brian Markle

Mazel Tov on the birth of Sienna Rae Klein; Mazel Tov on the Bar Mitzvah of Reid Markle – Merle and Ron Schwartz

Mazel Tov on the wedding of Madalyn Rabinowitz – Markle Family Wishing a speedy recovery of Merle Schwartz – Shelley and Dennis Kash; Jeannette and Michael Wertheimer

Marking Yahrzeit Of:

Estelle Gross Dolinka – Janet Dolinka

ESTELLE HURWITZ BAR/BAT MITZVAH MEMORIAL FUND

Assists Bar/Bat Mitzvah celebrants with their Bar/Bat Mitzvah expenses at Temple Israel.

In Memory Of:

Frances Finsilver – Lauren M. Carson

HUTTON FAMILY YOUTH GROUP FUND

Provides non-budgeted goods, services and equipment to Temple Israel's High School youth activities.

In Honor Of:

Mazel Tov on the birth of Romy Schneider – Shelley and Lenny Hutton

In Memory Of:

Joel Colman; Peter Trepeck – Shelley and Lenny Hutton

Marking Yahrzeit Of:

Yetta Bernstein – Norma Portney Sugar

Kip Kaplan – Robin and Harvey Reznick and Meg Kaplan

Suzanne Mendelsohn – Robin and Harvey Reznick

IWREY FAMILY SPECIAL NEEDS FUND

Provides senior programming, transportation and other special needs.

In Memory Of:

Frances Finsilver – Norma Portney Sugar

Allan "Geli" Gelfond – Harriet, Gila, Noam, Deena and Chuck

Gregg Herman; Fred Schatz – Alvin Iwrey

LES & BOB IWREY CHILDREN'S BEDTIME RITUAL FUND OF TEMPLE ISRAEL

Supplies bookplates, tapes and CDs to families attending a Bedtime Ritual Program.

In Honor Of:

Mazel Tov on the naming of Sloane Harper Hoffman – Julia and Jared Hoffman

Mazel Tov on the College Graduation of Maddy; Mazel Tov on the birth of Talia; Mazel Tov on the milestone birthday of Bob; Happy

Mother's Day to Les – Cindy and Ryan

In Memory Of:

Susan Chapnick – Margo and Jerry Kline

GLORIA & ALLEN KAFTAN SHABBAT CANDLESTICK FUND

Presents Shabbat candlesticks to families at the time of the naming of their children at Temple Israel.

In Memory Of:

In memory of the friendship between Al Kaftan and Jerry Franklin – Jackie Franklin

KAMIL FAMILY MEMORIAL FUND

Assists the community through Family Life Center programming.

In Memory Of:

Jay Korelitz – Flo Dessen

Carolyn Weisberger – Leslie Kamil, Lisa Kamil and Flo Kamil Dessen

STEPHAN ROSENBERGER KANDEL NURSERY FUND

Supports ECC programming and provides bereavement books for bereaved parents.

In Honor Of:

Mazel Tov on the High School Graduation of Allie Abrams; Mazel Tov on the Temple Israel Confirmation of Joan Applefield; Mazel Tov on the Temple Israel Confirmation of Zachary Elbinger; Mazel Tov on the High School Graduation of Aidan Fishkind; Mazel Tov on the Temple Israel Confirmation of Madison Kraft; Mazel Tov on the High School Graduation of Max Melamed; Mazel Tov on the High School Graduation of Elliana Michaels; Mazel Tov Judge Marla Parker on receiving the Avery Cohn Lifetime Achievement Award; Mazel Tov on the High School Graduation of Jolie Rosenzweig; Mazel Tov on the High School Graduation of Ayla Smolash – Cindy and Mark Kandel

In appreciation of Sandy Lumberg – Sherri and Eddie Lumberg

In Memory Of:

Lorraine Canner; Fran Finsilver; Nick Gilbert; Gregg Herman; Sheldon L. Klein; Lillian Meyers; Joyce Pennington; Marilyn Rosenfeld – Cindy and Mark Kandel

Gloria Sharon Miller – Jackie and Larry Taffel

In Memory Of:
 Fran Finsilver – Joyce Keller and Michael Walch

HARRY & PHYLLIS KELLMAN MEMORIAL FUND

Supports senior programming at Temple Israel.

In Memory Of:
 Gregg Herman; Beloved Mother of Sam and Pam Magar – Barbara Safran

BERTHA & HARRY KIFFERSTEIN SENIOR ADULT PROGRAMMING FUND

Supports senior programming at Temple Israel.

In Honor Of:
 Wishing a speedy recovery of Jeffrey Lipton – Marsha and Warren Kifferstein
In Memory Of:
 Marney Schoenfeld – Linda Gold

HARRY & SARAH LAKER MEMORIAL CONCERT FUND

Provides Temple with a concert of music with Jewish content.

In Honor Of:
 In appreciation of Renee and Martin Laker – Barbara and Dan Abramson; Elaine and Alan Belkin; Marianne and Rob Bloomberg; Sharon Klein; Susie and Jeffrey LaKritz; Debbie Levin and Larry Snider; Sherrie and Norty Stern

JOSEPH & BESSIE LEBOWSKY NURSERY SCHOOL FUND

Supplements toys, equipment and supplies used by the Nursery School.

In Honor Of:
 Mazel Tov on the Bat Mitzvah of Madelyn Fienman; Mazel Tov on the Bat Mitzvah of Bayla Kaluzny; Mazel Tov on the Bat Mitzvah of Addison Kohen; Mazel Tov on the Bar Mitzvah of Shane Michaels; Mazel Tov on the College Graduation of Allison VanDerAue – Bryna and Jeff Leib
 Mazel Tov on the 90th birthday of Stuart Small – Marcia and Ira Auslander
In Memory Of:
 Elaine Glazer; Elizabeth “Aliza” Stern Guyer; Carolyn Weisberger – Marcia and Ira Auslander
 Fern Lutz – Andrea and Steven Weiss

LARRY LEVIN MEMORIAL SCHOLARSHIP FUND

Provides a campership for a Temple Israel student for camp or other youth summer trips.

In Honor Of:
 Mazel Tov on the Bat Mitzvah of Addison Kohen – Elaine and Mel Raznick
In Memory Of:
 Kenneth Maier – Carole Levin

LIBRARY FUND

Supports Temple Israel libraries.

In Honor Of:
 Mazel Tov on the Bar Mitzvah of Isaac – Wendy and Jeffrey Moss
 Mazel Tov to Jan Kelman – Nancy and Nathan Kolender
In Memory Of:
 Susan Abrahams – Marilyn and Irwin Haberman
 Beloved Father of Verna Cole – Wendy and Jeff Moss
 Dr. William Floyd; Gordon Hollander; Richard Rosenbaum – Nancy and Nathan Kolender

BERNARD E. & BERNICE S. LINDEN FINE ARTS FUND

Assists acquisition of fine art and art forms, and to renovate objects d’art currently in Temple Israel’s possession.

In Honor Of:
 Mazel Tov on the Bat Mitzvah of Addison Kohen – Carolyn and Steven Marks

ROSALYN LINER & BARRY LINER MEMORIAL FUND

Supports the annual Temple Israel Chanukah party.

In Honor Of:
 Mazel Tov on the High School Graduation of Max Hortick – Yolanda and David Tisdale

Mazel Tov on the High School Graduation of Elliana Michaels; Mazel Tov on the Bar Mitzvah of Shane Michaels; Mazel Tov on the High School Graduation of Ayla Smolash – Judy and Kent Siegel

LIPSON FAMILY DAILY MINYAN FUND

Assists in the expenses of the daily Minyan.

In Memory Of:
 Alan Deresh – Sheila Lipschutz
 Andrea Samuels – Debi and Larry Kaplan

SUSAN & RABBI HAROLD LOSS EARLY CHILDHOOD CENTER FUND

Supports Early Childhood Center programming.

In Honor Of:
 Mazel Tov on the Bat Mitzvah of Madelyn Fienman – Cynthia and Murray Franklin
 Mazel Tov on the Bat Mitzvah of Addison Kohen – Dr. Amy Marks & Family
 In honor of Lewis Lanyi – Renee and Earl Ishbia
 Mazel Tov on the High School Graduation of Garrett Kirschner; Mazel Tov on the College Graduation of Sadie Kirschner; Mazel Tov on the High School Graduation of Jenner Leib; Mazel Tov on the High School Graduation of Elliana Michaels; Mazel Tov on the High School Graduation of Ayla Smolash; Mazel Tov on the College Graduation of Allie VanDerAue – Carolyn and Steven Marks
 Wishing a speedy recovery of Gary Levitt – Barbara Hillman and Allen Rubiner
 Mazel Tov on the Bat Mitzvah of Ms. Nanci Weisman – Marcia and Barry Fagan
In Memory Of:
 Mary Blitz – Elaine and Michael Ephraim
 Frances Finsilver – Arlene and Rick Selik
 Herman Goldsmith – Judie and Jerry Kroot
 Paul Katzman – Gayle and Gary Samuels & Family
 Fern Lutz – Laurie and Howard Stoller

BARBARA AND JACK MILIN GIFT FUND

Provides a gift to a Bar or Bat Mitzvah celebrant.

In Honor Of:
 Mazel Tov on the Bat Mitzvah of Risa Levinson – Rhonda and Steven Satovsky & Family
In Memory Of:
 Stanley Siegel – Barbara and Jack Milin

PEGGY & HARRY MILLER EARLY CHILDHOOD CENTER FUND

Supports Early Childhood Center programming.

In Honor Of:
 Mazel Tov on the Bat Mitzvah of Harley Metz – Suzi and David Wiener & Family
 Mazel Tov on the Bar Mitzvah of Jay Miller – Laurie and Steven Lewin; Yolanda and David Tisdale
 Mazel Tov on the special birthday of Nicole – Cynthia B. Lupilloff
In Memory Of:
 Fran Finsilver – DeDe and Jerry Weinberg

CHARLES A. MILLION & CAROL MILLION RAF CAMP & RABBINICAL SCHOLARSHIP FUND

Provides a Religious School student with a camp scholarship at a UAHC summer camp and to provide funding for rabbinic and cantorial students when Temple Israel has such applicants.

In Memory Of:
 Jean Million – Jim Grey; Wendy Winkler

BARBARA & LAWRENCE MILLMAN FAMILY CHANUKAH FUND

Provides holiday celebrations for those in need, through the Temple Israel No Temple Family Without A Chanukah Program.

In Honor Of:
 Wishing a speedy recovery of Barbara Millman – Jeremy, Stacey, Cecelia and Roger Grant; Barbara and Ray Horenstein; Margi and Morry Opperer

MINDELL/KUTINSKY EMERGENCY NEEDS MEMORIAL FUND

Provides emergency assistance to families in crisis.

In Honor Of:

Mazel Tov on the upcoming marriage of Maggie Wasvary and Connor Schram – Melanie and Steve Lefkofsky

In Memory Of:

Fran Finsilver – Donna and Michael Maddin; Kari and Jeff Provizer & Family; Verne and Ed Royal

Jay Korelitz – Kari and Jeff Provizer & Family

Marking Yahrzeit Of:

Charles Fenberg; Lillian Fenberg – Robin and Michael Fenberg

ISAAC z"l & YETTA PANN BIKKUR CHAVERIM FUND

Provides volunteer support and materials for visitation of home bound/nursing home individuals.

In Honor Of:

Wishing a speedy recovery of Fred Erlich; Mazel Tov on the marriage of Emily and Evan Freed – Yolanda and David Tisdale

Mazel Tov on the Bat Mitzvah of Bayla Kaluzny – Fox Family

In Memory Of:

Fran Finsilver; Nicolas Gilbert; Chuck Goldfarb; Jackie Heller; Marilyn Joy Rosenfeld – Yolanda and David Tisdale

Carolyn Weisberger – Susan and Michael Jacob; Kaye and Allen Weinberger

Marking Yahrzeit Of:

Maria Pajewski – Helen and Jeffrey Anspach

HELEN M. PICKETT CHILDREN'S READING FUND

Provides funding for children's reading programs.

In Honor Of:

In appreciation of Sandy and Roger Henkin, David and Alison Henkin, Adam and Taylor Drozd – Susan and Eden Henkin

IRVING & SARAH PITT COLLEGE SCHOLARSHIP FUND

Provides college scholarships to deserving Temple Israel seniors.

In Honor Of:

Mazel Tov on the Bat Mitzvah of Emma Gale – Linda and Murray Goldenberg

PRAYER BOOK FUND

Provides prayer books and other religious publications for Temple Israel use.

In Honor Of:

Mazel Tov on the 75th birthday of Gloria Stuppler – Carole and Howard Satovsky; Rhonda and Steven Satovsky

In Memory Of:

Larry Gross; Edna Perlmutter; Phyllis Bunny Pokrassa – Teri Goodman Marilyn Joy Rosenfeld – Teri Goodman; Faye and Michael Krut, Linda Feldman & Maurice Reisman, Susan and Stuart Levine & Susan Young

Marking Yahrzeit Of:

Sidney T. Levine – Sheri and Jay Abramson

RABBIS' DISCRETIONARY FUND

For charitable purposes.

In Honor Of:

Mazel Tov on the special birthday of Judah Bass – Andrew and Carol Bass Mazel Tov on the Bar Mitzvah of Charlie Bassey – Joan and Ronald Bassey

In appreciation of Rabbi Josh Bennett – Jacqueline Zeff

Mazel Tov on the birth of Aidan Emmett Brown – Rosalind and Richard Keith

Mazel Tov on the Bar Mitzvah of Casey Belen – Nancy and Cecil Raitt; Anita and Dr. Louis Schwartz

In appreciation of Rabbi Arianna Gordon; In appreciation of Rabbi Marla Hornsten; In appreciation of Rabbi Jennifer Kaluzny; In appreciation of Rabbi Jen Lader – Linda Levy; Margie Mellen; Ann and Jonathan Podolsky; Barbara and Richard Rosenthal

Mazel Tov Tammy and Bruce Gorosh on the birth of your grandson; Mazel Tov Freda and Joel Lerman on the marriage of your daughter – Brenda and Jim Herman

Mazel Tov on the 80th birthday of Stephen Gutman; Mazel Tov on the marriage of Jessica; Mazel Tov on the 25th wedding anniversary of Sally and Lou Soverinsky – Nancy and Cecil Raitt

In appreciation of Rabbi Marla Hornsten – Barbara and Sander Papo

In appreciation of Rabbi Marla Hornsten and Holy Sparks Shabbat – Mark Milgrom

Mazel Tov on the Bat Mitzvah of Bayla Kaluzny; In appreciation of Rabbi Harold Loss – Shari and Stan Finsilver

In appreciation of Rabbi Jennifer Kaluzny – Shari and Stan Finsilver; Kaplan-Rudolph Family

Mazel Tov on the Bat Mitzvah of Risa Levinson – Jody and Steven Seidman In appreciation of Rabbi Jen Lader; In appreciation of Cantor Neil Michaels – Andrea, Jeff, Maya and Casey Belen

Mazel Tov on the Bar Mitzvah of Noah Moss – Joni and Steve Redisch Mazel Tov Ann and Jon Podolsky on the birth of your granddaughter – Dina and Barry Pinsky

Mazel Tov on the special birthday of Barbara Wenokur – Laurie and Paul Singer

In appreciation of Rabbi Paul Yedwab – Les and Bob Iwrey

In Memory Of:

Sergeant Miriam Battle – Barbara and Edward Gudeman & Family

Tony Char – Barbara Frenkel

Blanche Crane – Harriett Freedman

Alfred Dangovian – Nancy and Barry Lefkowitz

Fran Finsilver – Annie and Rob Cohen; Francine Friedman; Elaine and Alan Herbst; Carol and Herb Lawson; Denise and Gary Rosenthal;

Donna and Bob Slatkin; Janice and Arnie Tracht

Dr. Maurice A. Frankel – Paul Frankel

Joel Hearshen – Judi and Ken Stoller

Sam Herman – Lorraine Lotzoff

Janet Kover – Carol Ellstein; Susan Moiseev

Fred Schatz – Debora and Michael Pinzur

Marilyn Joy Rosenfeld – Elizabeth LaKritz

Carolyn Weisberger – Sarah Gottlieb

Marking Yahrzeit Of:

Jerry Band; Phyllis Cheiman – Michele and Jordan Scharg

Stanley N. Freedman; Geraldine Rochkind; Leo Rochkind – Marcia Freedman

Rose Nankin – Linda Arens

FAYE & DON REIFLER MEMORIAL YOUTH TRIP SCHOLARSHIP FUND

Provides scholarships to Temple Israel youth group members to attend youth trips.

In Honor Of:

Mazel Tov on the Bat Mitzvah of Carly Rosenberg – Rosenberg Aunts, Uncles, and Cousins

Marking Yahrzeit Of:

Don Reifler; Faye Reifler – Michele and Jordan Scharg

JEFFREY DAVID ROCHEN z"l MEMORIAL FUND

Provides programming on youth mental health issues.

In Honor Of:

Mazel Tov on the special birthday of Don Rochen – Claudia and Ken Been; Barbara and Abe Weberman

In Memory Of:

Jeffrey D. Rochen – Phyllis and Don Rochen

Marking Yahrzeit Of:

Milton Rochen – Phyllis and Don Rochen

Allen Seel – Michele and Jordan Scharg

MICHAEL N. ROTH CAMP SCHOLARSHIP MEMORIAL FUND

Provides support for URJ camperships.

In Honor Of:

Mazel Tov on the Bat Mitzvah of Zoe Kellman – Janice and Micky Salter

In Memory Of:

Fran Finsilver – Francine and Bruce Finsilver

Marking Yahrzeit Of:

Louis Roth – Jackie, Jeff, Marc, Suzanne, Jodi and Jason Lipshaw

LYNN & HARVEY RUBIN SOCIAL ACTION FUND

Funds social action programming.

In Honor Of:

Mazel Tov on the special birthday of Lynn Rubin – Rhonda and Steven Satovsky

In Memory Of:

Nicolas Gilbert – Lynn and Harvey Rubin

SAMSON FAMILY MINYAN FUND

Assists in the expenses of the daily Minyan.

In Honor Of:

Mazel Tov on the birth of Monroe Sage Samson – Shelley and Arthur Fine; Roz and Leon Levine; Kari and Jeff Provizer & Family; Nancy and Cecil Raitt

Mazel Tov the special birthday of Margi Weinhaus – Ellen and Joel Euse

In Memory Of:

Frances Finsilver; Claire Grosberg; Marilyn Joy Rosenfeld; Fred Schatz – Barbara and Norman Samson

REGENE & LESLIE SCHMIER CONCERT SERIES ENDOWMENT FUND

Provides in perpetuity a high-quality, no charge concert series for the benefit of Temple members, their families and the community at large.

In Memory Of:

Fran Finsilver – Lauren and Jonathan Sterling

Karen Rosenbaum – Dana and Joel Ishbia & Family

ABRAHAM SEIDERMAN HIGHER-EDUCATION FUND

Provides financial assistance to a student still striving to achieve their academic potential through vocational, trade school, or college education.

In Honor Of:

In appreciation of Abraham Seiderman Higher-Education Fund – Adrienne and Thomas Runyan

Marking Yahrzeit Of:

Gennady Khaykin – Simona Seiderman & Sarah Seiderman

Helen Levy – Seiderman Family

SUSAN SHANKER CAMP SCHOLARSHIP FUND

Provides a UAHC campership to a Religious School student.

In Honor Of:

Mazel Tov on the special birthday of Nancy Gell – Debbie and Randy Fishman

In appreciation of Sheryl Lederman – Wendy and Sunny Shanker

Mazel Tov on the 50th wedding anniversary Michael and Barbara – Ellen and Marc Whitefield

In Memory Of:

Barbara Bodzin – Myrna and Michael Shanker

Frances Finsilver – Alan and Lenore Deutch-Singer & Family

Beloved Marlene; Dr. Alan Simons – Ellen and Marc Whitefield

Marking Yahrzeit Of:

Jimmy Gell – Vera Gell; Nancy Gell and Andrew Montgomery

EVAN SHAPIRO FUND FOR THE FIGHT AGAINST CANCER

Provides for cancer awareness programs, research, and camp scholarships for children with cancer.

In Memory Of:

Fred Schatz – Kim Flashner

DEBRA & JOSEPH z"l SILVER L'DOR V'DOR, GENERATION TO GENERATION FAMILY GARDEN FUND

Perpetuates the care and maintenance of Temple Israel's L'Dor V'Dor, Generation to Generation, Family Gardens.

In Honor Of:

In appreciation of Kari Provizer – Debbie Silver Heller & Family

TEMPLE ISRAEL SISTERHOOD FUND

Supports Temple Israel Sisterhood programming.

In Honor Of:

Mazel Tov to Jan Kelman on becoming Temple Israel Sisterhood President – Cheryl and Sheldon Kane

Mazel Tov on the 80th birthday of Bob Milstein – Nayda and Norman Schwartz

In Memory Of:

David Aaron Rubin – Wendy Kohlenberg and Susan Singer

Carolyn Weisberger – Kathy Green

SISTERHOOD GREENHOUSE FUND

Provide support for the Early Childhood Center Greenhouse.

In Honor Of:

In appreciation of Janice Kelman – Karen Winshall

Mazel Tov to Jan Kelman on becoming Temple Israel Sisterhood

President – Elissa and Danny Kline; Ann and Jonathan Podolsky

Wishing a speedy recovery of Jay Mellin – Dr. Amy Marks & Family;

Carolyn and Steven Marks

In appreciation of Dr. Steven Rankin – Paula and Jay Mellin

In Memory Of:

Fran Finsilver – Elissa and Danny Kline; Paula and Jay Mellin

Rita Levitt; Fred Schatz – Wendy and Larry Kohlenberg

Marking Yahrzeit Of:

Clifford Rogers – Deborah H Siegel

ROBERT SOSNICK FAMILY LIFE CENTER ENDOWMENT

Supports Temple Israel's Family Life Center.

In Honor Of:

In appreciation of Kari Provizer – Madeline Lowitz

In Memory Of:

Frances Finsilver – Lauren and Eric Bean; Paula and Lou Glazier; Caryn and Harold Rothenberg

Estelle Miller – Ann Lambert

Marking Yahrzeit Of:

Lloyd Finsilver; Ronald Finsilver – Shari and Stan Finsilver

TEMPLE ISRAEL ECC PLAYGROUND EQUIPMENT FUND

Supports new playground equipment for the Early Childhood Center.

In Memory Of:

Charles B. Goldfarb – Hyde Park Co-op Membership Committee,

Cynthia Thomas, Celestine May Jackson, Angela Morton and Rochel

Rusan

TEMPLE ISRAEL SECURITY FUND

Supports security efforts at Temple Israel.

In Memory Of:

Charles B. Goldfarb – Carole and Kenneth Allen & Family; Jeffrey

Wagenberg

Samuel Katz – Monica and Scott Goodwin

LEONARD & ROSLYN TRUNSKY COLLEGE SCHOLARSHIP FUND

Supports scholarship funding.

Marking Yahrzeit Of:

Roslyn Trunsky – Isabel Dzodin

SUZANNE & HERBERT TYNER RELIGIOUS SCHOOL FUND

Provides religious school funding.

In Memory Of:

Fran Finsilver – Evelyn Grant

JACKIE UNATIN MEMORIAL CHANUKAH FUND

Provides holiday celebrations for those in need, through the Temple Israel No Temple Family Without A Chanukah Program.

In Memory Of:

Charles Goldfarb – Kathie and Jeffrey Schwartz

FRAN VICTOR ISRAEL EDUCATION FUND

Funds Israel related education and activities.

In Honor Of:

In appreciation of Rabbi Arianna Gordon; In appreciation of Rabbi

Marla Hornsten; In appreciation of Rabbi Jen Kaluzny; In appreciation

of Rabbi Jen Lader – Fran Victor

In Memory Of:

Frances Finsilver – Fran Victor

JUANITA & GEORGE VICTOR MI SHEBEIRACH BLANKET FUND

Provides Mi Shebeirach blankets to hospital, nursing home and rehab patients.

In Honor Of:

Mazel Tov Andy Bocknek on being installed as President of Temple Israel – Nancy and Rick Rosenthal

Mazel Tov the High School Graduation of Hugo Brodsky; Mazel Tov on the special birthday of Dennis Brodsky; Mazel Tov on the special birthday of Linda Brodsky – Yolanda and David Tisdale

Mazel Tov on the 80th birthday of Nickie Glasser; Mazel Tov on the 80th birthday of Sheila Schiffer; Mazel Tov on the special birthday of David Tisdale – Linda Brodsky

In Memory Of:

Nick Gilbert – Linda Brodsky

Henry Lee – Nancy and Rick Rosenthal

WEINSTEIN ISRAEL TRIP SCHOLARSHIP FUND

Grants a scholarship to a Temple Israel student for travel to Israel.

In Honor Of:

Mazel Tov on the 60th wedding anniversary of Judith and Sydney Weinstein – Yolanda and David Tisdale

In Memory Of:

Nick Gilbert; Carolyn Weisberger – Judith and Sydney Weinstein

Jay Korelitz – Karen Simon; Judith and Sydney Weinstein

Marking Yahrzeit Of:

Mollie Auslander; Gerald S. Weinstein; Helen Weinstein – Judith and Sydney Weinstein

WENDY & RABBI PAUL YEDWAB YOUTH ENRICHMENT FUND

Supports a variety of youth enrichment activities offered or sponsored by Temple Israel.

In Honor Of:

Mazel Tov on the 18th wedding anniversary of Kim and Steve Lotzoff – Lorraine Lotzoff

In appreciation of Rabbi Paul Yedwab – Ida and Louis Goutman

In appreciation of Wendy and Rabbi Paul Yedwab – Flora Goldfarb

In Memory Of:

Tony Char – Hilary Mellin and Joel Gershenson

Charles Goldfarb – Susan Moiseev

Jackie Heller – Rosellen and Steven Sallen

Marilyn Joy Rosenfeld – Hilary and Joel; Mary and Burt Schwartz;

Karen and Keith Simmons

YFTI FUND

Supports YFTI activities.

In Honor Of:

Mazel Tov to Jordyn Bertman – Sheri and David Jaffa

Mazel Tov on the 80th birthday of Marty Ellis – Arline and Paul Gould

In appreciation of Rabbi Marla Hornsten; In appreciation of Cantor Michael Smolash; In appreciation of Rabbi Paul Yedwab – Heather Moss

In Memory Of:

Marty Cook – Sheri and David Jaffa

Frances Finsilver – Beth and Adam Lutz; Beth and Rob Sklar

YOUTH ISRAEL PILGRIMAGE FUND

Supports youth scholarships for Temple Israel sponsored trips to Israel.

In Honor Of:

Mazel Tov on the Graduation of Alix and Avery; Mazel Tov on the Bar Mitzvah of Ethan Feldman; Mazel Tov on the Bat Mitzvah of Harley Metz; Mazel Tov on the Bar Mitzvah of Ryan Ranzer; Mazel Tov on the Bar Mitzvah of Veronica Wolfe – Carolyn and Steven Marks

Mazel Tov on the Bar Mitzvah of Casey Belen – Roz and Leon Levine; Dr. Amy Marks & Family; Carolyn and Steven Marks

Mazel Tov Maya Belen on your Temple Israel Confirmation – Dr. Amy Marks & Family; Carolyn and Steven Marks

Mazel Tov on the Bat Mitzvah of Hannah Ben – Roz and Leon Levine

Mazel Tov on the Bar Mitzvah of Ari Bigelman – Shari and Stan

Finsilver; Yolanda and David Tisdale

Mazel Tov on the College Graduation of Hannah Charlip; Mazel Tov on the High School Graduation of Marnie Jacobs; Mazel Tov on the Bat Mitzvah of Bayla Kaluzny; Mazel Tov on the College Graduation of Hannah Kaplan; Mazel Tov on the High School Graduation of Garrett Kirschner; Mazel Tov on the College Graduation of Sadie Kirschner; Mazel Tov on the High School Graduation of Jenner Leib; Mazel Tov on the High School Graduation of Elliana Michaels; Mazel Tov on the Bar Mitzvah of Shane Michaels; Mazel Tov Ross Miller on your Temple Israel Confirmation; Mazel Tov on the High School Graduation of Jacob Mills; Mazel Tov Rebecca Mills on your Temple Israel Confirmation; Mazel Tov on the Bar Mitzvah of Taylor Rosenfeld; Mazel Tov on the High School Graduation of Ayla Smolash; Mazel Tov on the College Graduation of Allison VanDerAue – Yolanda and David Tisdale

Mazel Tov on the Bar Mitzvah of Jonah Peleg – Toby Pollak

Mazel Tov on the 80th birthday of Sheila Schiffer – Sherrie and Norty Stern

Mazel Tov on the Bar Mitzvah of Sydney – Risha Ring

In Memory Of:

Fran Finsilver – Sheila and Dan Schiffer

Paul Katzman – Jeannette and Michael Wertheimer

Fred Schatz – Sherrie and Norty Stern

JUDITH & RICHARD ZATKIN YOUTH FUND

Provides resources for Youth Group programs.

In Memory Of:

Charles Goldfarb; Belle Liberman; Mandell Schane – Lynn and Don Apel

FUNDS BEING FORMED

RYAN DEMBS MEMORIAL FUND

In Memory Of:

Judith Klein Farago – Marcie Bell

Fran Finsilver – Lindsay Dembs & Family; Lindsay and Brian Hords & Family

Edward Narens – Lindsay Dembs & Family

Marilyn Joy Rosenfeld – Ashley and Brian Adelman & Family; Lindsay Dembs & Family

AARON FENTON z"l MEMORIAL FUND

Supports programming at Temple Israel.

In Memory Of:

Joe Grossman – Marcia and Roger Fenton

Dorothy Sparber – Trayce and Randy Fenton

RICHARD MONASH CARING FUND

In Honor Of:

Mazel Tov on the Bar Mitzvah of Ethan; Mazel Tov on the Bar Mitzvah of Reid Markle – Barbara and Ray Horenstein

In appreciation of Rabbi Arianna Gordon; In appreciation of Lisa Kaplan; In appreciation of Andi Weiss – Bernie Friedman

Wishing a speedy recovery of Gary Levitt – Barbara and Ray Horenstein; Faye and Michael Krut

In Memory Of:

Freddie Averbuch; Fred Schatz – Marsha and Sheldon Adelson

Fran Finsilver – Rozie and Bernie Friedman

Marilyn Rosenfeld – Karen and Bruce Gilbert

JEFFREY SURNOW z"l MEMORIAL FUND

In Memory Of:

Thomas Vorenberg – Ron and Wendy Gruskin

Marking Yahrzeit Of:

Jeffrey Surnow – Michele and Jordan Scharg

TEMPLE ISRAEL VIRTUAL PROGRAMMING & STREAMING FUND

Provides funding for virtual programming and streaming.

Marking Yahrzeit Of:

Joseph Diamond – Marcia Diamond



USPS 538-040

5725 Walnut Lake Road | West Bloomfield, Michigan 48323
Phone: 248-661-5700 • Fax: 248-661-1302
Tyner Religious School: 248-661-5725 • Fax: 248-661-5790
The Susan & Rabbi Harold Loss Early Childhood Center: 248-661-5750
Temple-Israel.org

Volume 65 • July/August 2023 • Number 4
Affiliated with the Union for Reform Judaism

Non-Profit Org.
US Postage
PAID
Permit No. 902
Royal Oak, MI

Time sensitive material enclosed.

Clergy

Rabbi Harold S. Loss | Rabbi Paul M. Yedwab
Rabbi Joshua L. Bennett | Rabbi Marla R. Hornsten
Rabbi Jennifer T. Kaluzny | Rabbi Jennifer M. Lader
Cantor Michael Smolash (*The Stephen Gottlieb_z Cantorial Chair*)
Cantor Neil Michaels (*The Stephen Gottlieb_z Cantorial Chair*)

Rabbi Leon Fram (1895-1987) | Rabbi M. Robert Syme (1920-2003)
Cantor Harold Orbach (1931-2014) | Cantor Robert Tulman (1904-1960)

Professional Staff

Rabbi Arianna L. Gordon, RJE - *Education & Lifelong Learning Director*
Rabbi Jeffrey Stombaugh - *Director of The Well*

Jason Plotkin - *Executive Director*
Cassi Cohen - *Assistant Executive Director*
David M. Tisdale - *Strategic Development Director*
Julie Eisman Levy - *Early Childhood Center Director*
Kari Provizer, LMSW, ACSW - *Family Life Center Director*
Maya Grinboim - *Music Production Director*
Alicia Goldman - *Programming Director*
Eric Groh - *Facilities Director*
Gary Breuer - *Controller*

Officers

Andrew Bocknek - *President*
Debra Gordon - *Vice President* | Amy Brody - *Vice President*
Jodi Neff - *Treasurer* | Jason Ishbia - *Secretary* | Lee Hurwitz - *Member At-Large*
Joseph Bigelman - *Past President*

LABORDAY

P I C N I C

PAGE 7 FOR DETAILS

