

Temple Israel

MESSENGER

JULY/AUGUST 2022 • TAMMUZ/AV/ELUL 5782 • VOLUME 64, NO. 4

MESSENGER FUNDED BY THE PAUL AND LOIS KATZMAN ENDOWMENT

LABOR DAY

PICNIC



Page 8 for details

Labor Day Picnic is sponsored by the Morris & Esther Bittker Picnic Fund.



Just a few weeks ago, on a beautiful Friday in June, my daughter, along with the rest of the PreK and Kindergarten classes graduated from the Temple Israel Loss Early Childhood Center. It was a uniquely special day, as I got to be both an emotional parent and a proud rabbi. After four incredible years of learning in our ECC, it is time for her to move to the next stage of her journey, but here is what I know she has learned while a student in our ECC:

- Her teachers will always challenge, support, encourage and push her to be her best, while also offering a hug and a smile.
- She is confident in her place at Temple Israel, running through the hallways as if this was her home (and it really is!).
- She has learned coping tools for when she feels anxious or unsure about something new.
- She can tell me the stories, traditions and rituals of every Jewish holiday.
- She can also tell me about the science experiments, art projects of the day, math skills and how to read and write each letter.
- Perhaps more importantly than the academic skills she has learned are the social skills—she knows how to be kind and inclusive, how to manage conflict with classmates, how to share, and how to make new friends.
- Above all else, she has learned to be self-confident, recognizing that she has an important place in her class, in her community, at Temple Israel and in the world.



I know that this list is not all encompassing, but I also know that my daughter is being sent to Kindergarten with a full set of tools that will enable her to be successful as a learner and as a human being. And for all of these skills, I am extraordinarily grateful to the amazing teachers and staff in our ECC.

If you have not already made decisions about school for the fall, I strongly encourage you to call our ECC to enroll your child. We have an exciting year planned as early care and after care return, extracurricular activities are added, and specialists visit each of the classrooms. We hope that you will join us so that your child can have the same magical experiences!

Rabbi Arianna Gordon

RELIGIOUS SERVICES & EVENTS



In Review: On Monday, May 16th, we were thrilled to welcome Noa Tishby for a speaking event at Temple. It was very exciting to see so many people in attendance for a beautiful evening under our pavilion tent. The night started with an intimate pre-glow followed by an engaging conversation with Ms. Tishby led by Rabbi Hornsten and Cantor Michaels. We were also honored to host Israel's Deputy Consul General to the Midwest, Daniel Aschheim, who gave the introduction to our program. A special thanks to our host committee as well as our Israel committee for helping to ensure the program was a success. We are very grateful to the Miriam & Dr. Isaac Barr Israel Education Fund whose support made this event possible.

SUNDAY MORNING MINYAN SERVICE

Sundays • 9am at Temple Israel

Please join us as we pray together for comfort, healing and peace.

More info: www.temple-israel.org/event/minyan

Minyan is funded by the Mary Lou & Gary Berndt Minyan Fund, the Lipson Family Daily Minyan Fund and the Samson Family Minyan Fund.

ROSH CHODESH

Tuesday, July 28 & August 29 • 7pm Zoom

Celebrate the new moon and a new month!

This women's spirituality group gathers monthly to discuss important issues of religious and current events. Zoom link will be provided upon registration. **Register online at**

www.temple-israel.org/roshchodesh



IN THIS ISSUE

- 3 RELIGIOUS SERVICES & EVENTS
- 6 TEMPLE COMMUNITY
- 9 WE TAKE PRIDE
- 10 VISIT ISRAEL
- 11 EARLY CHILDHOOD CENTER
- 14 ROBERT SOSNICK FAMILY LIFE
- 16 TEMPLE MUSIC
- 18 TEMPLE YOUTH
- 19 TYNER RELIGIOUS SCHOOL
- 22 FUNDS IN ACTION
- 23 BROTHERHOOD
- 24 SISTERHOOD
- 26 LIFE CYCLE EVENTS
- 29 TRIBUTES

Shabbat under the Stars

FRIDAYS

July 1st

Picnic Dinner* &
Kabbalat Shabbat Service
Bluegrass Band

The music for this service has been sponsored in honor of Paul & Arline Gould's 60th Anniversary.

July 8th

Kabbalat Shabbat Service
All Stars

July 15th

Play & Pray (pg. 6 for details)
Picnic Dinner* & Family Bingo
Family Service

July 22nd

Kabbalat Shabbat Service
Eco Shabbat

July 29th

Picnic Dinner* &
Kabbalat Shabbat Service
Israel Shabbat

August 5th

Kabbalat Shabbat Service
All Stars

August 12th

Play & Pray (pg. 7 for details)
Picnic Dinner* & Magician
Family Service featuring the
Teen T'fillah Team

August 19th

Kabbalat Shabbat Service
All Stars

Summer Services Supported by Suzanne and Herbert z"l Tyner.

**Picnic dinners begin at 6pm. Bring your own or enjoy our buffet.
\$15/adult, \$7/children (5-12), 4 and under are free.*

Register online at www.temple-israel.org/picnic2022



BOKER OR GOOD MORNING

SATURDAYS

Join us throughout the summer for
unique Shabbat experiences for all ages!

www.temple-israel.org/summer22

July 9th

Shabbat for Tots (pg 6 for details)
- Shabbat at the Zoo

July 23rd

Family Shabbat - Havdalah
- Havda-luau (pg 6 for details)

August 6th

Shabbat for Tots (pg 7 for details)
- Splish Splash Shabbat

August 13th

Adult Shabbat Experience
- Sisterhood Shabbat

August 20th

Family Bike n' Pray
- Challah Roll (pg 7 for details)

August 27th

Adult Shabbat Experience
- Ready or Not

Shabbat for Tots is geared toward children 5 and under.
Family Shabbat is geared toward elementary school-age children.

TEMPLE COMMUNITY

HAVDA-LUAU

AT LILY PAD SPRINGS SPLASH PAD
(6200 Farmington Road, West Bloomfield)

SATURDAY, JULY 23, 2022
6:30 - 8:30 PM

Put on your swimsuit, bring your towels, and we'll supply the leis; we have the splash pad all to ourselves! Say aloha to Shabbat during a musical Havdalah ceremony with Rabbi Kaluzny & Cantor Michaels, followed by dinner and Hawaiian shave ice!

PLEASE REGISTER BY MONDAY, JULY 18
WWW.TEMPLE-ISRAEL.ORG/EVENT/LUAU

Temple Members: \$15/adult; \$7/child
Non-members: \$18/adult; \$10/child

Spaces are limited. Geared toward families with elementary school-age kids, though all are welcome!



In Review: Milk & Cookies Shabbat - The best Shabbat of the summer so far, with a moo-sical service and milk & cookie bar!

FAMILY PROGRAMMING:



SHABBAT AT THE ZOO

Saturday, July 9 • 10am at
The Detroit Zoo
Ribbit Ribbit, Cockle-doodle-doo! Temple Israel & The Well invite you to Shabbat at the Zoo! Families with young

children are invited to hop, trot and waddle down to meet friends and clergy by the Polar Bears at Pierson Lake Picnic Site. Enjoy a family friendly Shabbat service, songs & crafts! BYOP- Bring your own picnic, and we'll provide the snacks! **For more information and to register:**

www.temple-israel.org/event/SfT



PLAY & PRAY - BINGO

Friday, July 15 • 5:30pm

Get ready for a family game night of epic proportions; it's BINGO Shabbat at Temple! Enjoy a picnic dinner and stay for services

that follow. **Bring your own dinner or RSVP for our picnic buffet at:** www.temple-israel.org/event/bingo



SPLISH SPLASH SHABBAT

Saturday, August 6 • 10am

Join our Temple Israel clergy as we celebrate a summery Shabbat with songs, prayer, snacks and some water fun! Remember to bring your

bathing suits and towels! **For more information and to register:** www.temple-israel.org/event/splash22



PLAY & PRAY - MAGIC

Friday, August 12 • 5:30pm

Prepare to be amazed! Enjoy an incredible magic show followed by a picnic dinner and Shabbat services featuring the Teen T'fillah

team! **Bring your own dinner or RSVP for our picnic buffet at:** www.temple-israel.org/event/Magic



CHALLAH ROLL

Saturday, August 20 •

8:45am/10am

Grab your bikes and join us at 8:45am for bagels, lox and a family-friendly, 4mi bike ride along the West Bloomfield

Trail, OR meet at Temple at 10am with your scooters, skateboards, etc. for wheely fun activities, services and a donut decorating oneg! Supported by the Dr. Joel Forman Family Challah Roll Fund. **For more information and to register:** www.temple-israel.org/event/ChallahRoll

ADULT PROGRAMMING:



SIP INTO SUMMER

Saturday, July 16 • 7pm at Temple Israel

Join Rabbi Paul Yedwab, Cantor Neil Michaels and Kari Provizer, LMSW,ACSW for a strolling, Michigan

inspired dinner with incredible cuisine by our very own Executive Chef, Carole Wendling and wonderful wines paired and hand selected by local sommelier, Chad Feldman. **For more information and to register:**

www.temple-israel.org/event/summer



GAME DAY

**Tuesdays, July 19 & Aug 16
1 - 4pm at Temple Israel**

Bring your friends and your favorite game! Canasta, Bridge, Mahjong, Pinochle, Euchre & Rummikub. Coffee,

tea and snacks will be served. There is no charge to attend but reservations are required by the Friday prior to Game Day. Let the games begin! **For more information and to register:** www.temple-israel.org/event/GameDay

Temple Israel

LABOR DAY

PICNIC

IS BAAAAACK!

Monday, September 5, 2022

10:30am - 2pm

Train Rides • Pizza • Magicians
Pony Rides • Kona Ice Truck
Moon Walks • DJ
Face Painting • Games
& SO MUCH MORE!

Fun for the whole family!

No pets, please.

**OPEN TO THE COMMUNITY,
FREE OF CHARGE!**

Sponsored by the Morris & Esther Bittker Picnic Fund.



KNEADED WITH LOVE BREAD BAKING**Tuesday, August 23 • 5pm**

Rabbi Marla and Kneaded with Love invite you to join us for a very special evening of baking, social action, and an outdoor summer dinner! Kneaded with love is a group of bakers that donate fresh bread to local food pantries. The bread you bake with us at Temple Israel will be donated to our food pantry the following Thursday! Watch your email for more information.

NEW MEMBER CONNECTION**Thursday, August 25 • 6-8pm**

Attention New Members! We are thrilled you have chosen Temple Israel as your spiritual home. Please join our leadership and clergy in our new member orientation program to begin building meaningful, spiritual and lifelong relationships. Dinner will be served! **Register online at:** www.temple-israel.org/form/nm082522

MUSEUM UPDATES!

Next time you are in Temple Israel check out the amazing museum cases! We have freshened up our amazing permanent collecting and added in a few surprises. Our amazingly talented ECC students provided their masterpieces of Judaica for the museum display. Their pieces add a pop of color and youth to our traditional and exquisite collection. We hope you enjoy!

TIKKUN OLAM:**DRIVE-THRU FREE FRESH FOOD PANTRY****Thursdays, July 14, 28, August 11 & 25 • 2-4pm**

The pantry is operating as a contact-free drive-thru in Temple's parking lot on the 2nd and 4th Thursday of each month. Open to the community. Need is the only requirement.

FREE CLINICS**Thursdays, July 14, 28, August 11 & 25 • 12-5pm**

Wayne Health Mobile unit will be hosting free clinics in the Temple Israel parking lot! No ID required & no appointment needed. **For information on what services are offered:** www.temple-israel.org/event/waynmobileunit

FURNITURE BANK

Donate your Gently-Used Furniture to Local Children and Families In-Need! We'll come right to your home to pick up (gently-used and in good repair) furniture items essential to our program. **Contact us to schedule a pickup!** www.furniture-bank.org/donate/donate-furniture or 248-332-1300

WE TAKE PRIDE

Mazel Tov to **Charles Danto** for being named an honoree at JSL's Annual 8 over 80 Celebration that took place on May 22, 2022. Charles' strong work ethic and commitment to family is remarkable and we are so happy he received this well-deserved honor. We are very proud to have Charles in our Temple family!

Anita Pazner recently published a children's book, *The Topsy-Turvy Bus*, which is based on the real-life Topsy-Turvy bus created by Hazon. Anita's book teaches children the importance of taking care of the earth and creating a better, cleaner world. Thank you, Anita for Making a Difference, in our community! We are proud to have you in our Temple family.

Mazel Tov to **Maya Rosen** on being selected as the Helsinki JDC Jewish Service Corps Fellow. Maya will be in Israel this summer leading a teen tour, then she will move to Finland for her 2-year position as a JDC Fellow. What an incredible honor! We are so proud of Maya and wish her the best on this exciting, new opportunity.

VISIT ISRAEL



AT ISRAEL'S 75TH - TEMPLE ISRAEL IS GOING BACK TO ISRAEL!

MARCH 12 - 21, 2023

**We're going back to Israel as a community for the first time in over a decade
and want you to join our Temple Israel contingent.**

Join your family, friends and neighbors from the Detroit Jewish community on a special journey packed with exciting adventures, unique historical visits, first-class culinary experiences and VIP encounters. Whether it's your first time to Israel or the next time, this time it's going to be an experience like no other!

Registration is now open! <https://motorcitymission.org>

THE AUDREY & WILLIAM FARBER ENDOWMENT FUND FOR THE SUSAN & RABBI HAROLD LOSS EARLY CHILDHOOD CENTER

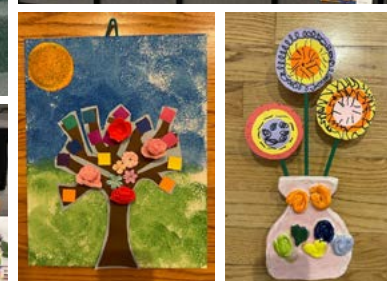
In Review: Children's Concert & Dinner - The Susan and Rabbi Harold Loss Early Childhood Center's first post-pandemic Children's Concert and Dinner was a rockin' success.

We were excited to welcome guests back into the building for a night of food, fun, and art. The ECC students of all ages made artwork to proudly display. Every medium imaginable was represented, clay, paint, beads, wire, watercolor and so much more!

The children were excited to show off their musical talents in conjunction with the release of The Temple Kidsrael Album. Cantor Michaels and Cantor Smolash led the students in song. They were FANTASTIC and put on quite a show.

What a beautiful way to celebrate the students in the ECC program at Temple Israel, along with the teachers and staff! Thank you to Linda Kole and Family and the Kole-Otis-Sklar Fund for supporting this wonderful night.

The entire Temple Kidsrael project was fully underwritten through a generous gift from the Gottlieb family in loving memory of Stephen Gottlieb. We know this engaging music and inspiring book will share his love of music with countless Temple families. For information on how to get your own copy of the children's book *Eretz Yisrael Sheli* and all album music, please visit www.temple-israel.org/eretz-israel-sheli.html





In Review: End of year class trips - The children at the Susan and Rabbi Harold Loss Early Childhood Center were grateful to celebrate a wonderful school year with their family and friends on end of the year field trips.

The toddlers enjoyed a day of crafts and play at Marshbank Park. The preschool classes went to Heritage Park where they learned new things at the nature center and maker space, plus enjoyed a nature walk and playing at the park. Our Pre-K classes enjoyed a fun-filled day at the Detroit Zoo. They enjoyed looking for animals that correlate with the Zoophonics alphabet they have studied all year. Our kindergarten class went to Hess-Hathaway Park. They went on a hayride, visited the farm, and had lots of fun playing on the fabulous all-abilities playground.





Wishing you all the best!

After 15 years of dedicated service Shellie Ravitz has decided to retire from the Susan and Rabbi Harold Loss Early childhood Center. She will be missed. Shellie's role as support staff was integral to the efficiency of the program. Shellie provided incredible support to our teachers and families, helping to navigate any challenges facing our students. Whether small or big, social, emotional, physical, or academic; Shellie was always willing to dive in and assist. Shellie would collaborate with outside resources like speech pathologists, paraprofessionals and local school districts to insure children received consistent services while in our school and after. She

worked hard to provide guidance and moral support to families to insure the transition from the ECC graduation to the next school was seamless.

Shellie is an avid golfer and gardener. She plans to travel and spend time with her family. Please join the ECC in extending our sincere thanks and wishing her all of the best.

NEW SPACE FOR OUR YOUNGEST MEMBERS



Students at the Susan & Rabbi Harold Loss Early Childhood Center and campers at Camp Shemesh are in for a treat! The walled playground along the entrance drive will be completely renovated. Exciting new equipment specifically designed for preschool-age children was carefully researched and selected.

The ECC looks forward to welcoming all our new students to enjoy this state-of-the-art recreation space.

Enrollment for the 2022-2023 school year is open! Check out www.temple-israel.org/learning/preschool for more information, or call the ECC office at 248-661-5750 to schedule a tour.

THE ROBERT SOSNICK FAMILY LIFE CENTER

ENSURE YOUR CHILD HAS A FANTASTIC
NEW SCHOOL YEAR AND JOIN US FOR THIS
FUN, ENGAGING NIGHT OUT WITH

Dr. Susan Maples

Book Discussion "Brave Parent"



**FREE BOOK
TO ALL WHO
REGISTER BY
AUG 12!**

**TUESDAY,
AUGUST 16, 2022
7 PM AT TEMPLE ISRAEL**

Come have a glass of wine and
enjoy an evening under the pavilion
for a book discussion with Dr. Susan Maples.

So, you want to know what it will take to assure your
child will grow up to become a healthy and happy
young adult in today's world? Dr. Susan Maples, a
dentist and pediatric health educator, finally cracks the
code on the most critical contemporary elements, and
she passionately delivers the recipe.

RSVP: www.temple-israel.org/event/Maples

Supported by The Arnie Goodman Memorial Fund.



The Robert Sosnick
Family Life Center

VIRTUAL RESOURCES:

Temple Israel provides families with the resources to meet
life's challenges and a wide array of educational and social
programming. This includes virtual resources that can be
accessed at home as we all try to stay safe as Covid-19
rates increase. For a list of virtual resources, go to:

www.temple-israel.org/robert-sosnick-family-life-center

SUPPORT GROUPS:

For more information on any of these Support Groups,
contact Laura Koziol at laura@temple-israel.org or 248-
661-5700.

CAREGIVER SUPPORT GROUP

We are looking to host this group sometime this Summer.
If you have any interest in this group, please contact Laura
in the Family Life Center at laura@temple-israel.org or
248-661-5700. More information will follow.

AA- ALCOHOLICS ANONYMOUS

Thursdays • 7:30pm at Temple Israel

Open to individuals who have a desire to stop using alcohol
and/or other substances. Meeting utilizes the AA 12-Step
Program. **For more information contact Fred Stevenson**
at frednstevenson@gmail.com or 248-872-8652.



BEREAVEMENT SUPPORT GROUP

**Thursdays, July 7, 21,
August 4 & 18 • 2pm at
Temple Israel**

After the death of a loved
one, there are so many

thoughts, feelings, and experiences to deal with. Please
join Diane Levy-Rubinstein, LMSW and others in sharing
one's grief within a group setting while also defining the
uniqueness of your grief. **For more information and to
register: www.temple-israel.org/bereavement**



In-review: Afternoon Concert Series with David Syme

PROGRAMMING:

For more information on any of these Programs, contact
Laura Koziol at laura@temple-israel.org or 248-661-5700.



RECHARGE, REJUVENATE & REFLECT

Tuesday, July 12 • 5:30pm

at Temple Israel

Facilitator Gayle Goodman,
200 RYT - Join us for a
relaxing evening of yoga

to find your balance and move forward from the year's
challenges. This event is best suited for ages 30-75.

For more information and to register:

www.temple-israel.org/event/Yoga

ADULT HEALTH AND FITNESS - **NEW SESSION!**

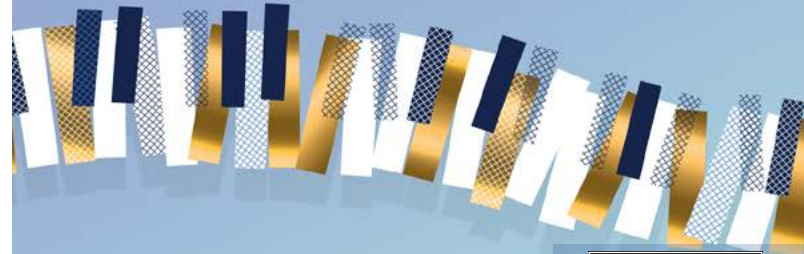
Thurs, July 14, 21, 28, August 4, 11 & 18 • 3pm at Temple

Join us for one or all of these 6 classes which will focus
on improving balance, mobility, coordination, flexibility,
and overall wellness. These classes will introduce you to
exercises that are low-impact and performed from seated
and/or standing positions. **Register online for one or all:**

www.temple-israel.org/event/fitness

In conjunction with the Caring Community, Celebrating Our 25th Year

25^{YEARS} Temple Israel's AFTERNOON Concert SERIES



FEATURING

MICHAEL CARLUCCIO
"THE MAN OF A THOUSAND VOICES"

THURSDAY, JULY 21 • 2:00PM
AT TEMPLE ISRAEL OR VIRTUAL*



FEATURING

MATTHEW BALL
"THE BOOGIE WOOGIE KID"

THURSDAY, AUGUST 18 • 2:00PM
AT TEMPLE ISRAEL OR VIRTUAL*



Open to the community free of charge.

In person, at Temple Israel or virtually* on our website.
Reservations are not necessary, however, if you are bringing a
large group, please call Kari K. Provizer, LMSW, ACSW at
248-661-5700 so that we can plan accordingly.

*If you will be joining us virtually, please tune in here:

www.temple-israel.org/concerts

Partially funded by the Caring Community, the David Arthur
Stulberg Memorial Fund, the Harry & Phyllis Kellman Memorial Fund,
the Bertha & Harry Kifferstein Senior Adult Programming Fund and
the Iwrey Family Special Needs Fund.



The Robert Sosnick
Family Life Center

www.temple-israel.org/event/AfternoonConcert

MUSIC AT TEMPLE



In Review: Six13 Laker Concert - The return of this year's in-person Laker concert started off with a bang – literally. No sooner did we hear the first rumbles of thunder from the grey May sky, did Six13 launch into their sensational global calling card with, *Bohemian Chanukah*. The men of Six13, a six-voice Jewish a cappella powerhouse from New York, delivered a fresh take on Hebrew liturgy, singing their original arrangements and music for Jewish songs, parodies of pop favorites, and covers of Yiddish and Israeli classics. Their music was so much fun and the way they engaged with the audience was very exciting. Our deepest thanks to Marty and Renee Laker for another stellar concert at Temple Israel.



Schmier Concert JOHN BOGDAN

Sunday, August 14, 2022
4pm at Temple Israel

We are so delighted to present award winning pianist, John Bogdan, who, upon graduating from the University of Michigan and the Royal Academy of Music, has performed nationwide.

He is the staff accompanist for the world class University of Michigan Musical Theatre program. Recently, under the music direction of Andy Einhorn, John was the piano accompanist for *Fiddler on the Roof* in collaboration with the Philadelphia Orchestra.

Most especially, we are thrilled to introduce John as Temple Israel's new pianist. Please join us in welcoming him!

More info: www.temple-israel.org/schmier

The Schmier Chapel Concert Series is presented in loving memory of Regene & Leslie Schmier and Jessica R. Schmier.

Temple is so pleased to introduce our next Zipser Foundation Artist in Residence, Aaron Markovitz. You will see Aaron blending into the familiar and joyful sound of our regular Temple services over the summer. Since Aaron grew up and had his Bar Mitzvah right here at Temple, please welcome him back when you see him on the bimah or at one of the many programs, concerts and classes he will be bringing to our community.

THE ZIPSER FOUNDATION

ARTIST IN RESIDENCE - AARON MARKOVITZ



Outside Temple, in his regular music career, Aaron is a mandolin wizard and gifted songwriter. He has toured the country with his virtuoso bluegrass band "Escaping Pavement" and did a few stints on Oceana and Royal Caribbean cruise lines leading their night club band. A graduate of the Los Angeles College of Music, he can play a wide variety of folk and pop styles and he is excited to bring his talent and creativity to Temple Israel. Since you won't hear bluegrass very much at our regular services, keep an eye on venues like 20 Front Street if you want to hear more of his bluegrass side.

Temple expresses our heartfelt and grateful thanks to the Burton A. Zipser and Sandra D. Zipser Foundation, which has generously underwritten the full cost of bringing Aaron to Temple as our next Zipser Foundation Artist in Residence.



TEMPLE YOUTH

MAZEL TOV

To our newly elected 2022-2023 YFTI Executive Board!

Presidents **Andrew Bertman & Sydney Butler**

Programming VP **Mollie Weiner**

Membership VP **Hayley Weiss**

Communications VPs **Arden Hafron & Garrett Kirschner**

Jewish Community VP **Jolie Oleshansky**

Social Action VPs **Jacob Bennett & Madison Kessler**

Fundraising VPs **Max Melamed & Alexa Kessler**

YFTI is excited to share their new general board for the
2022-2023 school year!

Mitzvah Day Chairs **Caryn Ben & Brody Oleshansky**

Ski Trip Chairs **Ashley Kronenberg & Eli Raykinstein**

Purim Carnival Chairs **Madison Kraft, Lily Moss & Amit Siegmann**

Communications Chairs **Jessica Otis & Lola Hafron**

City Trip Chairs **Sophie Frank & Mason Rothschild**

Social Programming Chair **Brianna Kronenberg**

Recruitment Chairs **Madison Broad & Elliot Foreman**



TYNER RELIGIOUS SCHOOL



CREATE . GROW . LEARN

At Temple Israel's Tyner Religious School Jewish values come to life as students not only learn about our Jewish history and traditions, but live the values we are taught in ancient literature. For the 2022-2023 school year we are excited to build on our exciting, experiential, innovative learning experiences for all grades.

GRADES PK-3

Students meet on Sunday mornings from 9:30 -11:30 am for learning focused on Jewish values, holidays, and Torah stories. Regular family education programs encourage families to live the values we teach.

GRADES 4-6

Students meet on Sunday mornings from 9:30 -11:30 am for learning focused on Jewish values, holidays, Torah stories and Tikkun Olam: making the world a better place. Regular family education programs reinforce students' learning experience. Continuing the success of Hebrew in the House, students will meet 1-on-1 with teachers for personalized Hebrew learning.

GRADE 7

7th grade meets on Monday evenings. Student will learn about Jewish Identity, Holocaust and Israel.

GRADE 8

Our successful, experiential 8th grade program meets at Temple Israel and out in the community on Monday evenings. The Madrichim Training Course welcomes students to explore leadership roles in our K-6th Religious School program on Sunday mornings.

GRADES 9-12

Our ROOTS program will meet on Monday evenings at Temple Israel as student alternate between grade level learning with rabbis and elective classes that will allow them to grow their Jewish knowledge and prepare them to go off into the world with a strong Jewish identity.

REGISTER ONLINE AT WWW.TEMPLE-ISRAEL.ORG/TYNER

Deadline to register August 22, 2022

Mazel Tov

TO THE GRADUATION & CONFIRMATION CLASS OF 2022

Photos taken by Les Gorback



ADULT EDUCATION

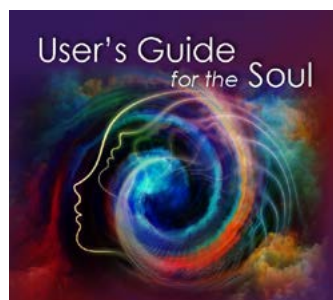
For more information on these Adult Education classes, contact the Education Office at 248-661-5725 or email lkaplan@temple-israel.org

If tuition presents a financial hardship on any of the following classes, please contact 248-661-5725 or www.temple-israel.org/ed-office

SHABBAT TISCH

Saturdays • 10 - 11:30am

Join us for a Shabbat morning of insights and investigation into the texts of our Bible. Led by volunteer facilitator, Norrine Freeman.



USER'S GUIDE FOR THE SOUL

**Thursdays, July 7, 21 & 28,
August 4, 11, 18 & 25 •
10:30am**

Do you want to learn
about the structure of your

soul? Is it possible to navigate the flow of consciousness through the body more masterfully? Through delving into this powerful kabbalistic text, you will gain the tools to discover your highest self and master the challenges of your life. Taught by Cantor Smolash. **RSVP to Maya Grinboim at 248-661-5700 or maya@temple-israel.org**

BEGINNING HEBREW READING FOR ADULTS

Tuesdays • 10-11am or 7-8pm

Beginning September 6, 2022

New students are welcome to learn the Aleph Bet, in person, at Temple Israel! Students will gain basic reading skills and begin their journey towards Hebrew proficiency. Taught by Sheryl Lederman. 12-week course fee is \$75/members, \$125/nonmembers. **Register online at www.temple-israel.org/event/hebrewread**

BEGINNING CONVERSATIONAL HEBREW FOR ADULTS

Mondays • 11:30am-12pm

Beginning September 12, 2022

In this online course, students will learn modern Hebrew vocabulary and phrases. They will begin to engage in conversational Hebrew for daily use! Taught by Sheryl Lederman. 10-week course fee is \$75/members, \$125/nonmembers. **Register online at www.temple-israel.org/event/hebrewconv**



INTRODUCTION TO JUDAISM

**Tuesdays, Sept 20 – Dec 6,
2022 • 7-8pm**

Explore Jewish life, values, celebrations, history, theology, and spirituality

with Temple Israel's clergy in this 10-week course! Ask questions, discover multiple answers, and find out how Reform Judaism could be meaningful to you. This course is open to all – interfaith couples, those raising Jewish children, individuals considering conversion, and anyone who just wants to learn more about Judaism! Cost is \$150 per person; \$180 per couple. Students are encouraged to purchase a selection of recommended books. **Register online at www.temple-israel.org/event/intro**

FUNDS IN ACTION

We are thrilled to highlight some of our extraordinary funds.

To see a complete list of all Temple funds, please visit www.temple-israel.org/funds

To donate to the following funds, go to: www.temple-israel.org/tributes or call: 248-661-5700

DONNA & ALAN ASP EMERGENCY ASSISTANCE FUND

PROVIDES EMERGENCY ASSISTANCE TO FAMILIES IN CRISIS

In 2018, Donna & Alan Asp created the Donna & Alan Asp Emergency Assistance Fund after discovering someone they knew was homeless. Knowing that this tragedy happens considerably more than they are aware, they felt compelled to create a fund that would help people in emergency situations. The fund provides time-sensitive assistance to help members with housing, safety, food, and utilities. Since its establishment, this fund has provided a lifeline to families facing a crisis, particularly in the past two years. With this short-term assistance, Donna and Alan hope their fund can be a difference maker and help provide hope to those experiencing difficult challenges.

ALBERT GOODMAN COLLEGE SCHOLARSHIP FUND

PROVIDES TUITION ASSISTANCE TO A GRADUATING SENIORS OF TEMPLE ISRAEL'S RELIGIOUS SCHOOL

Albert "Obbie" Goodman used to remind his sons, Mark and Gary, that what distinguishes mankind from beast is education, quoting the book of Kohelet. To him, college education provides critical thinking tools, no matter what one might study. Albert wanted to become a medical doctor, but WW2 and lack of educational opportunities for Jews prevented that dream from being fulfilled. After the war and having spent years working at Ford, Albert established Eaton Steel, a family business that is now welcoming its third generation. During the shiva for his father, Mark saw a few people he never met before. To his astonishment, they told him that his father secretly "put them through college." It was then clear that perpetuating Obbie's name would involve education, and since all members of the Goodman family attended in-state colleges, it was fitting to have the fund provide a scholarship for those attending in-state colleges or universities. Thanks to the generosity of the Goodman family, many Temple Israel seniors have received a scholarship from the Goodman Fund.

MORRIS & ESTHER BITTKER PICNIC FUND

SPONSORS THE ANNUAL LABOR DAY PICNIC

We are thrilled to bring back our annual Labor Day Picnic. This annual tradition was put on hold due to the pandemic, however this Labor Day we are so excited to welcome everyone back to Temple for an amazing day of fun, family, and community. Through the generosity of the Bittker family, Temple provides an incredible, free event for all to enjoy. This multi-generational family celebration, open to the community, showcases rides, games, arts, crafts, entertainment, and a wonderful array of fair food. We can't wait to spend Labor Day with you!

AFFILIATES - BROTHERHOOD

JOIN BROTHERHOOD TODAY!

Earlier this summer, you should have received an invitation to become a part of Brotherhood, the Men's affiliate at Temple. Our mission is to provide an environment in which adult male members of our congregation can be linked to the Temple community through service and social connections. We are actively engaged in improving the quality of life for our members, their families, our congregation, and the community. Our charitable programs include; Blood Drives, Temple Usher Corp, College Dinners, Camp Scholarships, Outings for JARC, KADIMA & JFS, and Financial Support for Temple programs. **Check us out at www.temple-israel.org/Brotherhood to learn more about what Brotherhood has to offer.** You will find a link to join our affiliate and become a part of our great family.

USHER CORPS

Come to Temple Israel on Shabbat, High Holidays, or for other programs and see the smiling faces of our ushers. Do you have time to give on a Friday night or Saturday morning? We are looking for some fresh smiling faces to greet our congregants and guests. We also need ushers for other services and special events – whatever works for you! **For more information, contact Art Dubin at countryart@comcast.net, or Marc Roland at miroland@comcast.net**

BLOOD DRIVE: HELP SAVE A LIFE!

Monday, September 5 • 9:30am - 3pm

It's always a Mitzvah to donate blood to the Red Cross. Temple Israel Brotherhood is proud to sponsor the annual blood drive at the Labor Day Picnic. Social distancing protocols will be followed. **To reserve your spot, or to volunteer during the blood drive, please contact Dr. Mike Michelson at 248-819-1235.**



Join Brotherhood at our annual
Scotch and Sirloin dinner.

This is our way of saying
"thank you" to our members for
supporting the programs and
activities that Brotherhood sponsors.

SCOTCH & SIRLOIN BBQ



Tuesday, August 9th
6 pm at Temple Israel

Steak & Salmon with all the fixin's!
Brotherhood members in
good standing are free;
\$25 per guest
(Includes dinner and open bar)

RSVP by Wednesday, August 4th
Register online at
www.Temple-Israel.org/Sirloin

Questions?
Contact Jerry Isenberg: jmisenberg@comcast.net



AFFILIATES - SISTERHOOD

What Can I Do?

Plenty, Sister!



**Your Sisterhood
at work...**

**Providing Summer
Camperships**

By simply paying your dues, attending
an Event or visiting our Gift Shop,
You help make this possible!
Stronger Together!

Calendar of Events:	AUG 17 Bingo with Fleishman
JULY 20 Bingo with Fleishman	AUG 19 Shabbat with Hartford
JULY 28 Kibbitz with your Sisters	AUG 25 Kibbitz with your Sisters
AUG 13 Sisterhood Shabbat	SEPT 19 Opening Program

Honey for the Holidays

What better way to wish family, friends and business associates a "Sweet and Healthy New Year" than sending a jar of honey? Ship a festive 8 oz jar of 100% pure Kosher Honey anywhere in the U.S. for only \$13.50 plus FREE SHIPPING thru August 1st, after add \$6.50 shipping per jar (Continental US shipping only).

Ordering is quick and easy at www.orthoney.com/tis (enter group code "TIS" if prompted).

Questions? Contact Lynn Apel at 248-420-3625.



WHAT AN WONDERFUL YEAR!

It has been my honor and privilege to serve as the Temple Israel Sisterhood President this past year. I would like to thank our Executive Board, General Board and Sisterhood members at large, our Temple Family and our entire

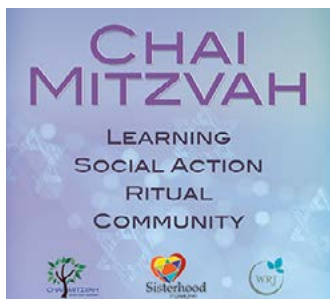
community for all your support and hard work. It has been an amazing experience being able to work with so many dynamic individuals. We could not have had this year's success without you. Based on everyone's generous support and fundraising efforts this past year, Temple Israel Sisterhood is excited to announce the following gifts:

- \$25,000 to the Fruit of Our hands Sisterhood Greenhouse, toward our \$250,000.00 pledge. Bringing our total to date \$114,000
- \$3,600 to Women Reform Judaism, Social Justice Fund. This is earmarked for Women's Reproductive Rights
- \$3,090 to Women of Reform Judaism, YES FUND (Youth, Education and Special Projects) qualifying our Sisterhood for the WRJ Roll of Special Merit
- \$1,000 to the Ukraine Relief fund

These gifts are in addition to the many services and items donated throughout the year, including Prayer Books for Bar/Bat Mitzvah students, school and camp scholarships, Chanukah candles and Hamentashen for our Religious School and Early Childhood Center students. Sisterhood also has many other charitable contributions. This year Temple Israel Sisterhood's annual gifts and contributions total \$40,000.

I look forward to another great year and thank you for your continued support. We are truly Stronger Together!!

L'Shalom,
Andi Weiss



CHAI MITZVAH

Chai Mitzvah will return in the fall. We hope that we will meet in person.

Questions? Contact: Jan Kelman at 248-763-4716 or Jodi Mills at 248-798-8423.

BINGO WITH FLEISHMAN RESIDENTS

Wednesday, July 20 & August 17 • 11am

Come and mingle with us on the 3rd Wednesday of each month. We'll join the residents of Fleishman to play Bingo. We can always use more volunteers. **Questions call Judy Wayne at 248-851-9588 or Jan Kelman at 248-763-4716.**



KIBBITZ WITH YOUR SISTERS

Thursday, July 28 & August 25 • 10am

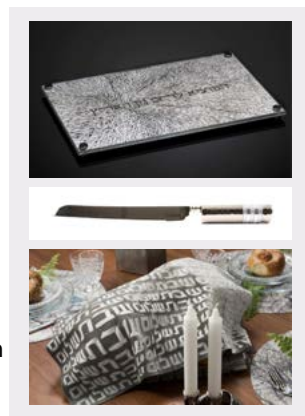
Join us at Legends Park (near the Franklin Public Library) for an hour of

sharing stories with Sisterhood Sisters. Libby Kaplan will start us off with some Sisterhood Trivia. BYOC (bring your own chair). We look forward to seeing you IN PERSON! **For more information and questions about where we will meet, email Jan Kelman at jkelman47@gmail.com or Jodi Mills at jodisisterhood@gmail.com**

ONLINE GIFT SHOP

Our Fabulous Temple Israel gift shop is available for your shopping pleasure 24/7. We have amazing Judaica and gift items. **July/August Special: 20% off of Jewelry, Challah Boards, Challah Covers and Knives.** Must be over \$25 and in stock; excludes special orders. Touchless pickup is available.

Shipping and delivery options are also available. **Shop at: www.templeisraelgiftshop.com** Questions? Call or text Debbie E. at 248-496-4525, Debbie F. at 248-227-2146 or Stacy at 248-894-6617.



ORDER YOUR TRIBUTE CARDS!

Let someone know that you are thinking of them. Sisterhood is pleased to offer a choice of tribute cards to mark your special occasion or remember someone in a time of need. In addition, recipients of tribute contributions of \$50 or more will now receive a beautiful certificate letting them know of your generosity. **Purchase online at www.temple-israel.org/Sisterhood or to purchase by phone, call Debbie Levin at 248-514-9769 or email her: dlevin1218@comcast.net**



IT'S A NEW YEAR FOR SISTERHOOD - NOW IS THE TIME TO RENEW OR JOIN.

We have exciting programs and activities that will appeal to everyone. Please join today!

Join online at www.temple-israel.org/Sisterhood

SAVE THE DATE FOR OUR OPENING PROGRAM ON SEPTEMBER 19, 2022.

Free to all paid up members! Watch your email for details!



LIFE CYCLE EVENTS

B'NAI MITZVAH

SATURDAY, AUGUST 20, 2022



MAZIN SARDY, son of Elyssa and Joseph Sardy; grandchild of Belinda Morales, Bernard Stein z"l, Sue Sardy and Joseph Sardy z"l; great-grandchild of Rae Glickoff z"l. Mazin is a student at Birmingham Covington School. An avid sports fan, Mazin loves football, tennis, swimming and ping pong. For his mitzvah project, Mazin helped to raise funds and supplies for Almost Home Animal Rescue and other local animal shelters. He also looks forward to volunteering with elderly residents and putting smiles on their faces.



FRIDAY, AUGUST 26, 2022

MARNI ROSE LEVINE, daughter of Shayna and Josh Levine; grandchild of Susan and Rabbi Harold Loss and Dr. Berna and Noah Levine. Marni is a student at Hillel Day School. She enjoys competitive dance, Camp Tamarack, cross country running, skiing, traveling and spending time with her friends. Marni raised over \$2,000 for the Send A Kid To Tamarack project to fund camp scholarships by making custom camp jewelry. In addition, she helped set up a store to support underprivileged families with the opportunity to shop for holiday gifts.

TEMPLE FAMILY

Births

Remi Rose Bendana, daughter of Emily & Alexander Bendana; granddaughter of Evelyn Peralta and Ellen & Mario Bendana; great-granddaughter of Dolores Arguello and Deborah & Martin Karp.

Ayla Jerry Blanck, daughter of Lauren & Adam Blanck, granddaughter of Diane & Mitch Mondry and Roz & Stanford Blanck.

Jadynn Palmer Brown, daughter of Karli & David Brown; granddaughter of Marla & Jimmy Gartrell and Nanci & Gary Brown; great-granddaughter of Gloria z"l and Herbert "Herbie" Woolman z"l.

Archer Elliott Fenton, son of Sharon Shebib & Jesse Fenton; grandson of Tracye & Randy Fenton and Jenny & Nick Shebib; great-grandson of Madeline Shebib and Tina & Arthur Cryns.

Veer Niam Jurewicz, son of Drs. Varsha & Michael Jurewicz; grandson of Risa & Jay Levinson, Walter Jurewicz and Nalini & Vinny Sinha.

Avery Jordan Kleinman, daughter of Laura (Marcus) and Michael Kleinman; granddaughter of Andee & Ken Marcus and Jody and Alan z"l Kleinman.

Owen Henry Milgrom, son of Mara Winkler Milgrom & Josh Milgrom; grandson of Bonnie & Michael Singer, Steven Winkler & Rhonda Mirzin, and Judy & Allen Milgrom; great-grandson of Elaine & Jerry Laker.

Parker Lael Neumann, daughter Dr. Miles & Taylor Neumann; granddaughter of Dr. Fredric "Fred" & Felicia Neumann and Kappy & David Trott.

Charlie Juliette Satovsky, daughter of Jessica Hersh & Matthew Satovsky; granddaughter of Susan & Dr. Nelson "Nick" Hersh, and Rhonda & Steven Satovsky.

Ari Maxwell Sonenberg, son of Evie & Scott Sonenberg; grandson of Debbie & Jeff Chutz and Julie & Dan Sonenberg; great-grandson of Charlotte Arbit.

Nora Jane Techner, daughter of Whitney & Chad Techner; granddaughter of Ilene & David Techner and Cindy Brown.

Josephine Rae Valenti, daughter of Kirby & Stephen Valenti; granddaughter of Sandy & Ralph Josephson and Alane & Mark Valenti; great-granddaughter of Carol Bush, Clara Showfer z"l and Betty Valenti z"l.

B'nai Mitzvah

Gilana Naomi Frank, daughter of Julie M. Frank, and granddaughter of Peggy and Dennis Frank, celebrated her bat mitzvah on April 30 at an outdoor service in the San Francisco Botanical Gardens with Rabbi Jay Moses officiating.

Weddings

Allison M Bell, daughter of Debbie and Bruce Bell, to Andrew G Fullett, son of Lori and Michael Fullett.

Alison Joy Bloch, daughter of Sheree and Wayne Bloch, to Seth Adam Samuels, son of Gayle and Gary Samuels.

Chelsea Morgan Demarrais, daughter of Ellen and Gilbert Demarrais, to James Alexander Snell, son of Nancy and James Snell.

Jaime Alyse Falco, daughter of Shelly and Peter Falco, to Mitchell Julius Weiss, son of Karen and Steven Weiss.

Amy Freedland, daughter of Lesley Paglia and Mark Freedland, to Jacob Michael Ishbia, son of Linda and Jason Ishbia.

Allison Maureen Goldin, daughter of Shelley and Gary Goldin, to Brett Kurtz, son of Renee and Ken Kurtz.

Samantha Jaclyn Huss, daughter of Susan Stallard z"l and Allan Huss, to Tyler James Curt, son Tim and Barbara Curt.

Allison Lindsey Levine, daughter of Michele and Robert Levine, to Jace David Gittleman, son of Sharon and Scott Gittleman.

Maria Estella Magidenko, daughter of Ekaterina and Roman Magidenko, to Harrison Mitchell Seltzer, son of Marian and Phillip Seltzer.

Amanda Leigh Orechkin, daughter of Robin and Mark Orechkin, to Benjamin Jeffrey Schafer, son of Reginette and Gerald Schafer.

Sydney Marilyn Papenheim, daughter of Lisa Shapiro and Erich Papenheim, to David Adam Loyd, son of Jane Moskola and John Loyd.

Samantha Marie Reid, daughter of Gloria Reid and Gary Rabideau z"l, to Bruce Michael Komisar, son of Sadie and Abraham z"l Komisar.

Lauren Elizabeth Sallen, daughter of Rosellen and Steven Sallen, to Dorin Zachary Deitch, son of Marsha and Jeffrey Deitch.

Allison Santacreu, daughter of Margy and Jean Michel Santacreu, to Neil Parikh, son of Dipti and Jyotin Parikh.

Casey Irene Wright, daughter of Rabbi Debra Stahlberg Dressler and John Wright, to Jacob Samuel Kraus, son of Amy and Rabbi Jonathan Kraus.

In Memoriam

Alan Barry, husband of Karen Barry; father of Todd (Jill) Barry, and Laura (Scott) Kay; grandfather of Maxwell and Gavin Barry, and Cameron and Jeremy Kay; brother of Michael (Cathy) Barry and Gordon Barry; son of Julius z"l and Lillian z"l Barry.

Joseph Bittker, husband of Deanna Bittker; father of Brian (Janice) Bittker, and Stuart Bittker; grandfather of Candace (Michael) Parker.

Paul Borman, husband of Marlene Borman; father of Eric (Julie) Borman, Stuart (Hilary) Borman, and Gilbert Borman; grandfather of Molly (Larry) Borman Heymont, Hannah (Marc) Crane, Harry Borman, Samuel Borman, Jonathan (Whitney) Borman, and Alex Borman; great-grandfather of Henry Heymont, Claire Crane, and Stella Crane; brother of Leonard (Roberta) Borman and Nettie (Morey) Firestone z"l; son of Abraham Borman z"l and Molly Borman z"l.

Natalie Reva Canvasser, wife of the Donald Canvasser z"l; mother of Sandi (Dr. Thomas) Millman and Charles M (Marc) Canvasser; grandmother of Jodi Robin Millman, Shelley Jaye Millman, Alana Canvasser (Evan) Wolf, and Kayla Nicole Canvasser; great-grandmother of London Drew Wolf and Pierce Aspen Wolf;

sister of Lewis z"l (Marion z"l) Freedman and Morton Freedman z"l; sister-in-law of Harriett Freedman, Byron (Maxine) Canvasser, Marvin (Elaine z"l) Canvasser z"l, and Robert (Beverly z"l) Canvasser z"l.

Henryk Fast, father of Monica Fast, Simon (Rachel) Fast, Sheila (Jason) Tucker, and Jessica (Timothy) Fast; grandfather of Carter Fast, Audrey Fast, Jacob Tucker, Lindiwe Capozzi, Josephine Capozzi, and Donovan Capozzi, son of Rena (Stiels) and Leon.

Lois Fishman, wife of Nat Fishman z"l; mother of Graham (Sue) Fishman, Jill Farber, Jodee (Roy) Raines, and Jayme Fishman; grandmother of Jarrett Fishman, Amanda (Ben) Lesnick, Brandon (Erin) Fishman, Justin Farber and Hailey (Jordan) Farber, Merrick Hirschman, Ayla Raines, Jasmine Hirschman, and Zoe Raines; great-grandmother of Oakley Fiona Lesnick; daughter of Harry Goldberg z"l and Jeanette (Katz) Golberg z"l.

Stanley "Stan" N. Freedman, husband of Marcia Freedman; father of David (Ellyn) Freedman, Mark (Mary) Freedman, and Jeffrey Freedman; grandfather of Rachael and Lindsey Freedman, Sydney Freedman and Seth Freedman; brother of Barbara (Terry) Fields and Janie Slayden; brother-in-law of Larry (Gladys) Rockind and Shelly (Michael) Gordon; son of Simeon z"l and Charlotte z"l Freedman; son-in-law of Geraldine z"l and Leo z"l Rockkind; former father-in-law of Lisa Barak-Freedman.

Melvin Freeman, husband of Norrine Freeman; father of Jeffrey (Maria) Freeman, and Joel (Randi) Freeman; grandfather of Henry and Jack Freeman and Rayna and Peri Freeman; brother-in-law of Sheldon Koven; son of Frank z"l and Rae F. z"l Finn.

Eugene Friedman, husband of Vivian Friedman; father of Darryl (Tori) Friedman, Stacey Reed and Neal Friedman z"l, Avery (Marlene) Gottfried, Dr. David (Rabbi Pamela) Gottfried and Lisa (Rich) Pooler; grandfather of Jennifer DeLia, Jeffrey DeLia, Madison Friedman, Mallory Friedman, Matthew Gottfried, Rachel Gottfried, Maital Gottfried, Shira Gottfried, Jonah Gottfried, Mollie Pooler and Georgia Pooler; brother of Gilbert "Gil" (Helene z"l) Friedman, and Elaine (Mark) Lavetter.

Susan "Sue" Jane Gans, wife of Dr. Robert I. Gans z"l; friend of David Gans and Janet (Jonna) and Lisa Gans Goldberg; grandmother of Jamie (Brandon Lefkowitz) Gans, Chad (Randell) Gans, Perry Goldberg, Ian Goldberg and Jolie Goldberg; sister-in-law of Gail Horwitz; aunt of Julie Risdon Fiedor and Jack Fiedor, Craig Risdon and Kelly (Kern) Risdon; great-aunt of Amanda Larson, Christian Fiedor, Chad Fiedor, Emily Risdon and Kate Risdon; friend of Lisa Saylor; daughter of Margaret z"l and Norman z"l Richards; sister of Betty Richards Risdon z"l, sister-in-law of Charles Roland Risdon III z"l, Ted M. Gans z"l, Marvin Horwitz z"l; sister-in-law of Dottie Gans z"l.

James "Jim" Gell, husband of Vera Gell; father of Jared (Lauren) Gell and Jeffrey (Elana Goldenberg) Gell; grandfather of "Teddy" Theodore and "Frankie" Francesca Gell, Jesse, Levi, Tate, and Georgie Gell; brother of Nancy (Andrew Montgomery) Gell and Susan Shanker z"l; brother-in-law of "Mickey" Michael (Myrna) Shanker and Dr. Alvin (Susi) Schoenberger; son of Carol z"l and Ted z"l Gell; son-in-law of Lola and Igor z"l Schoenberger.

Dr. Enrique Benjamin Gerbi, husband of Eda Gerbi; father of Maria (Jeffrey "Jeff") Freeman and Carlos (Sara) Gerbi; grandfather of Henry and Jack Freeman and Tomas and Mateo Gerbi.

Jo Margery Gilbert, wife of Dr. Daniel Gilbert z"l; mother of Steven Gilbert, Ruth (Steven) Chaness, Margo (Karl) Zakalik, Hope Ann Gilbert z"l, and Julie Cahill z"l; mother-in-law of Jim Cahill; grandmother of Sam Gilbert, Jessi (Alan) Vance, James and Jake Cahill, David and Samantha Chaness, Brad and Jack Gurwin, and Naomi Zakalik; sister of Barry Tilds z"l; sister-in-law of Joseph z"l and Shyrl z"l Gilbert, Allan Gilbert z"l, Laura Tilds, and Anita Lieberman; daughter of Paul z"l and Clare z"l Tilds.

Terry Gladstone, father of Sari (Jeff Blackman) Baskin-Blackman and Bradley Gladstone z"l; grandfather of Andrew Baskin, Brandon Gladstone, Matthew Blackman and Mitchell Blackman; brother of Lissa (Don) White; cousin of Kari (Dr. Jeffrey) Provizer.

J. "James" Neil Goldberg, husband of Peggy Boyle Goldberg; father of James Goldberg, Laura Moore, Michael Goldberg, Molly Goldberg.

David Goldman, husband of Jennifer Goldman; father of Ben Goldman and Addison Goldman; son of Jill and Jules Goldman; brother of Jennifer (Ethan) Frank; uncle of Sophie and Jonah Frank; son-in-law of Bonnie Miller.

Rose Rikfin Hechler, wife of Mark Hechler; mother of "Andi" Andria (Mark) Weiss, Ellen Hechler; grandmother of Kevin (Amy) Weiss, Kim Weiss, Scott and Elyse Weiss; great-grandmother of Eliana, Samuel and Gwendolyn Weiss.

Leo Hollander, husband of Harriet Hollander; father of Gary (Bonnie) Hollander, Kevin Hollander, Jeffrey (Jennifer) Hollander and Tobi Hollander; grandfather of Matthew, Darren, and Kadie Hollander, Kelly Wilson, John (Christine McPharlin-Floyd) Floyd, Rachel (Chris) Krebs, Ari (fiancee Miranda Kalinowski) Hollander, and Rosie and Sadie Meisler; great-grandfather of Logan Wilson, Hailey McPharlin, Emerson Floyd, and Scarlett Floyd; brother of David Hollander z"l, Martin Hollander z"l, and Miriam Weberman z"l; brother-in-law of Jay (Laura) Mackie.

Jennie Infeld, wife of Leo Infeld z"l; mother of Ilene (Martin "Marty") Kuretzky, Carol (Dr. Larry z"l) Mangel and Gayle (Donald Phillips) Infeld; grandmother of Kevin (Patrick Spadinger) Kuretzky, Sarah (Don) Kuretzky-Rossington, A.J. Mangel, Carly (Michael) Weinstock and Harry Leipsitz; great-grandmother of Jacob, Jonah, Laila, Joshua and Marlee.

Anne Siegel Jaffe, wife of Eugene Jaffe z"l; mother of Marcia (John) Cipriani, Barry (Wendy) Jaffe, and Sheila Jaffe z"l; sister of Martin Siegel z"l; grandmother of Sheri (Jacob) Olbrot, Elizabeth Jaffe (Ken) Smoot, and Sam Cipriani (Ashlie Reott); great-grandmother of Mayim and Zoe Olbrot, and Noah Smoot; companion of Sam Soskin z"l.

Barry Kadans, father of Jeffrey (Jennifer) Kadans, Alison Kadans, and Mark Kadans; grandfather of Sarah and Jacob Kadans; companion of Julie Shull; stepdad to Jeffrey and Lynne Shull; son of Joseph z"l and Rose z"l Kadans; cousin of Ronald Rossen z"l.

Jordyn Brooke Kaplan, daughter of Stephanie and Jeff Kaplan; sister of Jared Kaplan and Ashley Kaplan; granddaughter of Daniel and Sharon Krause and Raymond (Linda z"l) Stone; girlfriend of Calvin Dyke; niece of Glenn (Robyn) Kaplan.

Edith Katz, wife of Harry Katz z"l; mother of Robin (Mark) Orechkin, Julie (Dennis) Chaiken, and Michael (Shawn) Katz; grandmother of Amanda (fiance' Ben Schafer) Orechkin and Ali Orechkin, Shanon Chaiken, Dana (Scot) Corson, Derek (Kelly) Chaiken, Devon Chaiken, Evan Katz, and Austin Katz; great-grandmother of Norah, Benjamin, Elliot, Harlow and Oliver; daughter of Alik z"l and Dora z"l Cantor; sister of Harold (Elizabeth z"l) Cantor z"l, and Ida (Al z"l) Stein z"l; sister-in-law of Boris (Beatrice z"l) Katz z"l, and Nathan (Esther z"l) Katz z"l.

Irvin M. Lefton, husband of Sally August Lefton z"l and Zenia Jacknow Lefton z"l; father of Barbara Jacknow Shreve (Mark), Charles (Hannah) Lefton, Mitchell (Sherry) Lefton, Gerald (Karen) Jacknow, Janice Lefton, Eric (Pam) Lefton, and Dale Jacknow (Daniel) Brenner; grandfather of Alan and Lauren Shreve, Steven (Jen) Lefton, Kevin (Nicole) Lefton, Julie Lefton, Alexis (Rick) Jacknow Diaz, Emma Lefton, Ben Lefton, Ari Brenner, and Kira Brenner; great-grandfather of Dylan Lefton, Owen Lefton, Caitlin Lefton, Caroline Lefton, and Mallory Lefton.

Florence Levy, wife of Ira Levy z"l; mother of Carol Berger, Richard (Jill) Levy and Howard Levy z"l; grandmother of Joey (Jillian) Berger, Shelby (Maria) Berger and Nicole Levy; great-grandmother of Carson Berger, Cameron Berger, Phoenix Berger and Nelli Berger; daughter of Rose z"l and Sam z"l Sisskind.

Curt Lowenthal, husband of Elaine Lowenthal z"l; partner of Ileana Stone; father of Mark (Sandy Voremberg) Lowenthal and Sherry Lowenthal z"l; grandfather of Ian Lowenthal and Haley Lowenthal; brother of Edie Finklestein z"l.

Doris Pastor, wife of Wilbert Pastor z"l; mother of Steven (Suzette) Repitor and Julie Repitor; grandmother of Charles, Lauren and Hannah; great-grandmother of Pax and Liv; sister of Roseann (Frank) Bucherri.

Alvira Rogers-Schecter, wife of Allan Schecter z"l; mother of Mark Rogers (Stacey), Keith Rogers (Linda), Cheryl Flynn (Patrick), and Laura Touchton (Joe); grandmother of John (Nina), Jeff, Amanda, Brendan (Brytt), Austin (Morgan), Courtney, Conor, and Meghan.

Iris Rosen, wife of Leo Rosen z"l; mother of Mark (Anne) Rosen, David (Miriam) Rosen and Karyn (Barry) Shatzman; grandmother of Jenna and Carly Rosen, Aaron (Fiancée, Hannah Stanhope) Rosen, Sydney Rosen, Scott (Katie) Shatzman and Stephane Shatzman; great-grandmother of Emerson and Lulu; daughter of Kay z"l and Louis z"l Topor; sister of Susan Topor z"l; friend of Latrice and Gloria; companion to her dog, Chichi z"l.

Norman Rotter, husband of Harriet Rotter; father of Dr. Steven (Lisa) Rotter, Michael (Tara) Rotter, and David (Holly) Rotter; grandfather of Dr. Jacob Rotter (Dr. Michelle Sheyman), Maxwell Rotter (fiancée Hannah Klayman), Jack Henry Lowenstein, Daniel Rotter, and Mitchell Rotter; son of Roy z"l and Sylvia z"l Rotter; brother-in-law of Judith (Richard) Komer, Dr. Jeffrey Band (Meredith Weston-Band), and Bunny Band z"l; son-in-law of Herman z"l and Dorothy z"l Band Cooperman.

Leanne Small, wife of Dr. Richard Small; mother of Brian (Amy) Small and Scott (Jenny) Small; grandmother of Eliana Small, Jaren Small, Jacob Small, Samantha Vine and Evan Vine; sister-in-law of Sheldon Alkon and Lorraine Alkon z"l.

Susan I. Stallard, wife of Allan M. Huss; mother of Michelle E. Stallard-Hakim (David), Adam J. Stallard, Leah E. Lauterberg-Huss (Ryan), and Samantha J. Huss-Curt (Tyler); grandmother of Jonathan and Andrew Hakim, Alex and Caitlyn Lauterberg, and Rhys and Derrek Lauterberg-Huss; daughter of Albert z"l and Violet z"l Stanley; sister of Thomas M. Stanley z"l.

Robert A. Stewart, husband of Yan Stewart; father of Samantha Stewart, Sasha (Kelly) Stewart, and Philip Stewart; grandfather of Jake Stewart, Casey Stewart, Lainey Stewart, Frankie Stewart, and Wesley Stewart; son of Dorothy z"l and Joe z"l Stewart; brother of Karen (Allen) Amber, Walter Stewart and Lori Bucciero; former husband of Dr. Jana Stewart.

Harold Stone, partner of Donald Halper; brother-in-law of Allen and Janet Halper; uncle of Bob and Anne Halper, Shelley Halper and Ron Mochizuki, Lynn and Marc Rosen; great-uncle of Mike Mochizuki, Allison Waits, Lauren Mochizuki, Elizabeth Halper, Jonathon Halper, Jacob Rosen and Rebecca Rosen; companion to Alfi Stone.

Lawrence R. Trager, husband of Toby Trager z"l; companion of Cyma Karn; father of Toni Trager Bradley and Scott A. Trager z"l; father-in-law of Marcy Trager; grandfather of Rob Trager, Ryan (Laura) Trager, Jamie (Dr. Solly) Amster, Max (Lauren) Bradley and Sam Bradley; great-grandfather of Avery, Scotland, Paxton, Sloane and Ford; brother of Beverly "Bebe" (Earl z"l) Krause.

Barbara Weisberg, wife of Sheldon Weisberg z"l; mother of Lisa (Louis) Corey and Julie Edgar; grandmother of Zachary Edgar, Andrea (Scott) Unger, and Robert (Rachel) Edgar; Ema of Hadas (Thomas) Benhamou, and Samuel Corey; great-grandmother of Casey Unger, Brandon Unger, Tessa Unger, Quinn Benhamou,

and Celia Benhamou; sister of Melvyn (Diane z"l) Rubenfire; sister-in-law of Clifford (Marilyn) Weisberg, and Jerry z"l (Rosalind z"l) Weisberg.

Ronald Wolf, son of Sam z"l and Edith z"l Wolf; brother of "Mitch" Mitchell (Elaine) Wolf; uncle of Sloane Wolf, Evan (Alana) Wolf and Michael (Jenna) Wolf; great-uncle of London, Pierce and Wells.

Herbert Woolman, husband of Gloria Woolman z"l; father of Marla (Jim) Gartrell, Linda (Rick) Weinerman, and Rick Woolman; grandfather of Jason (Nikki) Gartrell, Heather (Rudy) Travis, Karli (David) Brown, Jared (fiancee Amy Hurwitz) Weinerman, Zach (Bekah Lear) Weinerman, Tyler Woolman, and Julia Woolman; great-grandfather of Sydney and Brady Gartrell, Gavin and Caylee Travis, and Masyn and Jadynn Brown; brother of Sheila (Art z"l) Schussler z"l, and Barbara (Irv z"l) Cohen z"l; brother-in-law of Ilene Gittleman, Murray Gittleman z"l, and Skippy Gittleman z"l; son of Louis z"l and Evelyn z"l Woolman; son-in-law of Hymie z"l and Pearl z"l Gittleman; friend of Rita Foon,

Kimberly Stevenson Yorke, wife of Kevin Yorke; daughter-in-law of Susan Yorke; sister-in-law of Jenifer (Wayne) Segal and Lisa Yorke.

TRIBUTES

ADMINISTRATOR'S DISCRETIONARY FUND

For charitable purposes.

In Honor Of:

Mazel Tov on a special birthday of David Tisdale – Elissa and Danny Kline

In appreciation of David Tisdale – Dorene and Alan Finer

In Memory Of:

James Gell – Team Spero and Sheri Hilkert

Dr. Irvin Lefton – Caroline and David Miller; Joan Smith

ADULT ISRAEL PILGRIMAGE FUND

Supports Temple Israel pilgrimages to Israel for adults.

In Memory Of:

Dr. Irvin Lefton – Donna and Barry Groden & Sarah and Brad Garon

GEORGE & SHIRLEY AGREE CARING COMMUNITY FUND

Provides birthday parties for residents of nursing homes, orphanages, and shelters.

In Honor Of:

In honor of Neil Satovsky – Dena and Sam Scheinfeld

In Memory Of:

Lillian Binder – Dena and Sam Scheinfeld

APPEL FAMILY CONCERT FUND

Provides funding for an Annual Music Program.

In Memory Of:

Dr. Irvin M. Lefton – Brad and Lori Hagopian Smith

DONNA & ALLAN APPLE FUND FOR CHILDREN WITH SPECIAL NEEDS

Provides madrachim support for children with special needs.

In Honor Of:

Mazel Tov on the special birthday of Mickey Mackey – Jeanne Delidow

Mazel Tov on the Bat Mitzvah of Sophie – Sue Ellen Simon and Arthur D. Berlin

In Memory Of:

Alan Barry – Donna and Allan Apple; Laurel and Stephen Epstein; Marlene and Ronald Rosen

James Gell – Marlene and Ronald Rosen

Barbara Weisberg – Donna and Allan Apple

MIRIAM & DR. ISAAC BARR ISRAEL EDUCATION FUND

To preserve the legacy of Miriam (Miri) Barr (Mania Lieder), a Holocaust survivor and, by inference, the Holocaust Jewish experience. She believed: 1. Israel is the core of Jewish existence, 2. Antisemitism must be challenged, 3. We must be proud of our Jewish heritage and teach to respect our history and core values.

In Memory Of:

Dr. Elie D. Aboulafia – Janie and Robert Starkman

Phyllis Shy – Michal Firsht

MORRIS & ESTHER BITTKER PICNIC FUND

Sponsors the annual Labor Day Picnic.

In Memory Of:

Joseph Bittker – Donna and Frank DiSabatino; Flora Goldfarb; Stuart Left; Carol Meizels; Bonnie Myers

TEMPLE ISRAEL BROTHERHOOD FUND

Supports Temple Israel Brotherhood programming.

In Memory Of:

Walter Farber – Sharie and Albert Gladner

Edith Katz; Iris Rosen – Shellie and Steven Achtman

MARLENE BUDMAN REMEMBRANCE GARDEN FUND

Plants spring flowers annually on the grounds of Temple Israel.

In Honor Of:

Mazel Tov on the special birthday of Cheri – Linda and Bobby Schmier

COURTNEY LISA CANTOR ISRAEL TRAVEL SCHOLARSHIP FUND

Provides funds for youth travel to Israel.

In Honor Of:

Mazel Tov Matthew Ben – Barbara Dubb

Mazel Tov on the special birthday of Barry Bershad – Sherry Cantor, Jaime and Michael Ben & Family

Mazel Tov on the Bar Mitzvah of Jonah Eaton; Mazel Tov on the special birthday of Stewart Eisenberg; Wishing a speedy & full recovery of Jimmy Lufty – Sherry Cantor & Family

In Memory Of:

Natalie Canvasser – Sherry Cantor and Barry Bershad

David Goldman – Sherry Cantor

Jane Homer – Ricki Elbinger

CANTORS' DISCRETIONARY FUND

For charitable purposes.

In Honor Of:

Mazel Tov on the 80th birthday of Sandra Glieberman – Linda and Al Katzen

In appreciation of Cantor Neil Michaels – Lori and Brian Serlin; Linda and Edward Shapiro

Mazel Tov Stephanie Michaels on earning your master's degree – Carolyn and Steven Marks

In appreciation of Cantor Michael Smolash – Emily, Mark, Marley and Jonah Eaton; Jodi, Mike, Brady and Bryce Feld

In Memory Of:

David Goldman – Brenda and Mark Altus

Melvin Freeman – Randa and Rick Feldman

CARING COMMUNITY FUND

Supports the programs of Temple Israel's Caring Community.

In Honor Of:

Mazel Tov on the wedding of Amy and Jake – Caryn and Hersh Rothenberg

Mazel Tov on the 60th wedding anniversary of Sue and Dennis Kay;

Mazel Tov on the Bar Mitzvah of Jack Linden – Carolyn and Steven Marks

Mazel Tov on the Bat Mitzvah of Ella Stybel – Susan and Stuart Levine

In Memory Of:

Alan Barry – Liz LaKritz; Dr. Amy Marks & Family; Andi and Andrea

Marks; Carolyn and Steven Marks; Caryn and Hersh Rothenberg

James Gell; Reggie Mensch – Carolyn and Steven Marks

David Goldman – Linda Feldman; Marlene and Gary Kraft; Cheryl and

Barry Lakritz; Steven and Linda Weiss

Darren Hessenthaler – Carol, Lori and Todd Levitt

Dr. Bernard Kole – Rose and Steve Sallen

Barbara Weisberg – Allan Gurvitz; Caryn and Hersh Rothenberg

CONCERT/LECTURE FUND OF TEMPLE ISRAEL

Assists in the support of concerts and lectures at Temple Israel.

In Memory Of:

Lois Katz – Gloria Beren

ETHEL & ROBERT DANTO CHILDREN'S LIBRARY & MEDIA CENTER FUND

Provides annual support for the Hodari Family Children's Library and Media Center.

In Honor Of:

Mazel Tov on the Graduation of Alison Chapnick – Patricia Baer

ARTHUR DUBIN CHILDREN'S SPECIAL NEEDS SCHOOL FUND

Aids families with children with special needs.

In Honor Of:

Wishing a speedy recovery of Michael Kromirs – Debbie Rottman

Mazel Tov on the 90th birthday of Lillian Meyers – Art Dubin

In Memory Of:

Ilene Babcock – Judith Scheinfeld and Harvey Babcock

Terry Gladstone – Bill Rosen

Eugene Friedman; Beloved Rose – Debbie Rottman

Alvira Rogers–Schechter – Art Dubin

Barbara Weisberg – Howard Dubin; Debbie Rottman

ZACHARY M. TALAN EDELSON MACCABI SCHOLARSHIP FUND

Provides scholarships for Temple Israel Maccabi participants.

In Honor Of:

Mazel Tov on the special birthday of Leonard Nagel – Gayle and Gary Samuels & Family

Mazel Tov on the Bat Mitzvah of Riley Reznick – Shelli Feinberg

Mazel Tov on the Bat Mitzvah of Ella Stybel – Shelli Feinberg and

Harold Etkin

In Memory Of:

Paul Borman – Linda and Andy Jacob

Gayle Edelson – Miriam and Victor Markowitz

STEPHANIE HOPE ELLIS COLLEGE SCHOLARSHIP FUND

Assists a college-bound Temple Israel Religious School Senior.

In Memory Of:

David Goldman – Sonny Cohn

TEMPLE ISRAEL ENVIRONMENTAL FUND

Supports Temple Israel environmental projects.

In Honor Of:

In appreciation of Dr. Jen Green – Joyce Keller

JACQUELINE R. FOX TORAH STUDY & SCHOOL SCHOLARSHIP FUND

Provides school scholarships and funding for the Torah study class.

In Memory Of:

Mel Freeman – Ruth Katz

JASCHA GELMAN MEMORIAL FUND

Provides funding for Israel trip scholarships.

In Honor Of:

In appreciation of Lee Morof – Lori and Brian Serlin

GENERAL GIFTS FUND

Provides general financial support of Temple Israel.

In Honor Of:

Mazel Tov on the wedding of Andrew and Ali – Nancy and Barry Lefkowitz

In appreciation of Temple Israel Friday Night Dream Team – Myreah Mia Moore

In Memory Of:

Phil Blinder – Lori Levine

Melvin Freeman – Hedda and Bill Panzer

David Goldman – Karen and Eric Adelman; Fran Wolok

Sylvia Stuppler – Evelyn and Louis Wolff

GOODMAN FAMILY JUDAICA MUSEUM FUND

Provides funding for the Temple Israel Judaica Museum and its programs.

In Memory Of:

Natalie Canvasser – Enid and Gary Goodman

Mel Freeman; Carl Murav – Janet Strote

ESTHER & JACK GORBACK FAMILY ARCHIVES FUND

Supports the Temple Israel archives.

In Honor Of:

Mazel Tov on a special birthday of Sharon Mills – Annie Weiss

STEVEN GOTLIB MEMORIAL FUND

Supports our annual Housing the Homeless project.

In Memory Of:

Alan Barry – Sylvia and Michael Gotlib

David Goldman – Rhoda Paull

HAROLD GOTTLIEB CAMP TAMARACK SCHOLARSHIP FUND

Provides need-based campership for Temple Israel children attending Camp Tamarack.

In Memory Of:

Joan Cohen – Bayle and Erwin Gutenberg

David Goldman – Michele and Larry Slutsky

AVIVA PEARL HERMAN MEMORIAL SHARE FUND

Provides support to those who have experienced miscarriage, stillbirth, or infant loss.

In Honor Of:

Mazel Tov on the Bat Mitzvah of Sasha Feld – Merle and Ron Schwartz

LOIS & FRED HOWARD MEZUZAH OUTREACH PROGRAM FUND

Supplies Jewish ritual items for the Jewish Personal Trainer Program which serves our congregational homes.

In Honor Of:

Mazel Tov on the engagement of Josh and Ashley – Hal and Connie Schwartz

Mazel Tov on the marriage of Lauren and Dorin; Mazel Tov on the marriage of Drake and Zoe – Helene and Ron Kroll

In Memory Of:

David Plengemier – Susan Solarz

HUTTON FAMILY YOUTH GROUP FUND

Provides non-budgeted goods, services and equipment to Temple Israel's High School youth activities.

In Honor Of:

Mazel Tov on the special birthday of Michelle Bass – Shelley and Lenny Hutton

In Memory Of:

Eric Grosse; Dick O'Leary; Dean Perach – Shelley and Lenny Hutton

Marking Yahrzeit Of:

Yetta Bernstein – Norma Portney Sugar

IWREY FAMILY SPECIAL NEEDS FUND

Provides senior programming, transportation and other special needs.

In Memory Of:

Leanne Small – Debbie and Alvin Iwrey

LARRY & ELEANOR JACKIER JEWISH EDUCATION FUND

Funds Torah and Text study programming.

In Memory Of:

Mel Freeman – Karen Lovinger

STEPHAN ROSENBERGER KANDEL NURSERY FUND

Supports ECC programming and provides bereavement books for bereaved parents.

In Honor Of:

Mazel Tov on the Temple Israel Graduation of Alison Chapnick;

Mazel Tov on the Temple Israel Graduation of Abby Chayet; Mazel

Tov on the Temple Israel Graduation of Skylar Elbinger; Mazel Tov

on the Temple Israel Graduation of Zachary Frank; Mazel Tov on the

Temple Israel Graduation of Shaina Lazar; Mazel Tov on the Temple

Israel Graduation of Benjamin Stern; Mazel Tov on the Temple Israel

Graduation of Charlie Tobias – Cindy and Mark Kandel

JOYCE KELLER & MICHAEL A. WALCH MIKVAH FUND

Maintains the beautiful treasure that Temple Israel has in its mikvah.

In Honor Of:

Mazel Tov to Carol Koboch – Carmen Biederman; Myrle Leland;

Arlene Oppenheim

In appreciation of Temple Israel Mikveh, Temple Israel Clergy and

Staff – Joan Wonsch-Nostadt

BERTHA & HARRY KIFFERSTEIN SENIOR ADULT PROGRAMMING FUND

Supports senior programming at Temple Israel.

In Honor Of:

Mazel Tov on the Bat Mitzvah of Reese Nicole Kaufman; Mazel Tov on

the Bat Mitzvah of Riley Raznick; Wishing a speedy recovery of Mel

Menuck; Mazel Tov on the Bat Mitzvah of Ella Stybel – Marsha and

Warren Kifferstein

Wishing a speedy recovery of Warren Kifferstein – Beverly and

Sheldon Scharg

In Memory Of:

Rose Freedman – Lisa Freedman and Marti Miller

Stanley Freedman – Denise Barak and Rosann Barak; Kifferstein

Family

Jimmy Gell; Dr. Arthur Klass – Marsha and Warren Kifferstein

Rudolph Keller – Lisa Freedman

DR. DENNIS J. AND MILLY KOVAN MEMORIAL FUND

Provides support to the annual Senior Expo to educate seniors and caregivers and promote active, healthy lives.

In Memory Of:

Alan Barry; Jimmy Gell – Linda Kovan

HARRY & SARAH LAKER MEMORIAL CONCERT FUND

Provides Temple with a concert of music with Jewish content.

In Honor Of:

In appreciation of Renee and Marty Laker – Susan and Jeffrey LaKritz

JOSEPH & BESSIE LEBOWSKY NURSERY SCHOOL FUND

Supplements toys, equipment and supplies used by the Nursery School.

In Honor Of:

Mazel Tov on the Bar Mitzvah of Jack Linden – Marcia and Ira Auslander

In Memory Of:

Alan Barry – Bryna and Jeff Leib

Jackie Lorfel – Marcia and Ira Auslander; Erin, Marvin and Gracie

Bleiberg

LARRY LEVIN MEMORIAL SCHOLARSHIP FUND

Provides a campership for a Temple Israel student for camp or other youth summer trips.

In Honor Of:

Mazel Tov Barbara and Allan Ben on the Bat Mitzvah of your granddaughter Madison; Mazel Tov on the Bat Mitzvah of Reese – Laurel and Steve Epstein

Mazel Tov on the Bat Mitzvah of Riley Raznick – Judy and Irv Blau; Jeffrey and Susan LaKritz

LIBRARY FUND

Supports Temple Israel libraries.

In Honor Of:

Mazel Tov on the Bar Mitzvah of Ian Kay; Mazel Tov on the Bar Mitzvah of Ryan Kay – Lisa Cohen

In Memory Of:

Mel Freeman – Myra and Larry Lawson

Terri Gladstone – Nancy and Nathan Kolendar

David Goldman – Ruth Beresh; Nancy and Nathan Kolendar

Darren Hessenthaler; Norman Rotter – Debbie and Henry Gornbein

BERNARD E. & BERNICE S. LINDEN FINE ARTS FUND

Assists acquisition of fine art and art forms, and to renovate objects d'art currently in Temple Israel's possession.

In Honor Of:

In honor of Howard Linden – Mindy and Jack Cherney; Susan and Neil Gross; Carolyn and Steven Marks

Mazel on the special birthday of Paula Linden – Carolyn and Steven Marks

ROSALYN LINER & BARRY LINER MEMORIAL FUND

Supports the annual Temple Israel Chanukah party.

In Honor Of:

Mazel Tov on the Temple Israel Confirmation of Jacob Bennett; Mazel Tov on the Temple Israel Graduation of Abby Chayet; Mazel Tov Stephanie Michaels on earning your master's degree; Mazel Tov on the Temple Israel Graduation of Benjamin Stern; Mazel Tov on the Temple Israel Confirmation of Daniel Stern – Judy and Kent Siegel
Mazel Tov on the Bat Mitzvah of Sari Kravitz – Natalie and Sidney Blatnikoff; Judy and Kent Siegel
Mazel Tov Paige Stearn on your college Graduation – Yolanda and David Tisdale

In Memory Of:

David Goldman – Natalie and Sidney Blatnikoff

Rose Hechler – Susan and Howard Levin

LIPSON FAMILY DAILY MINYAN FUND

Assists in the expenses of the daily Minyan.

In Honor Of:

In appreciation of Wendy and Larry Kohlenberg – Berlin and Katz Families

SUSAN & RABBI HAROLD LOSS EARLY CHILDHOOD CENTER FUND

Supports Early Childhood Center programming.

In Honor Of:

Mazel Tov Cheryl and Marc Bocknek on the Bat Mitzvah of your granddaughter – Karen and Phil Cohen

Mazel Tov Cheri Epstein and Family on the Bar Mitzvah of your grandson – Yolanda and David Tisdale

Wishing a speedy recovery of Michael Goldman – Nancy and Sheldon Satovsky

In appreciation of Rabbi Harold Loss – Lori Brooks; Ina and Murray Pitt
Mazel Tov on Temple Israel's New Executive Director Jason Plotkin – Sigred Solutions

Congratulation on the High School Graduation of Jack Pollack – Carolyn and Steven Marks

Mazel Tov Lynn and Harvey Rubin on the Bat Mitzvah of your granddaughter – Sharon and Larry Gursten

In Memory Of:

Melvin Freeman – Gail Katz; Shelley and Allan Kalmus

Jimmy Gell – Cheri Epstein

David Goldman – Lois and Dr. Jerome Gerenraich

Beloved brother of Arlene and Alan Gottlieb – Nancy and Sheldon Satovsky

Dr. Arthur Klass – Karen and Philip Cohen

Leanne Small – Joel Bartram; Miriam and Ron Bergman; Dr. Stacey Francis; Sue and Bob Friedman; Sue and Joe Gomez; Samuel

Hirschman; Ilana Glazier and Lowell Schmeltz, Benji, Ryan and Kobi;

Lorie and Ron Lieberman; Dr. Kenneth Matasar; Debbie, Michael and

Evan Cohen & Andy Pass; Dina and Barry Pinsky; Amanda and Justin

Polk; Ralsky Family; Elaine and Gary Rosenblatt; Robin and Brian

Rosenblatt; Mr. Lawrence Shapiro; Katie and Steven Shapiro & Family;

Mrs. Linda Shapiro; Mr. and Mrs. Lawrence Steel & Family

LOUIS & LILY MARGOLIS FAMILY CHALLAH FUND

Provides Challah to new members, and to those members returning home from the hospital or nursing care.

In Honor Of:

Mazel Tov on the 90th birthday of Etsy – David and Elaine Lippitt

In Memory Of:

Eugene Friedman – Alicia and Paul Tisdale

PEGGY & HARRY MILLER EARLY CHILDHOOD CENTER FUND

Supports Early Childhood Center programming.

In Honor Of:

Mazel Tov on the Temple Israel Graduation of Zoe Goldman; Mazel

Tov on the Temple Israel Graduation of Ethan Harrison Marcus; Mazel

Tov on the Temple Israel Graduation of Isabella Peg Muchnick – Marci and Marvin Shulman

Mazel Tov Lynn and Harvey Rubin on the Bat Mitzvah of your granddaughter – Carole and Larry Miller

BARBARA & LAWRENCE MILLMAN FAMILY CHANUKAH FUND

Provides holiday celebrations for those in need, through the Temple Israel No Temple Family Without A Chanukah Program.

In Honor Of:

Mazel Tov on the Bat Mitzvah of Emy Beckett; In honor of Lennox

Trivax – Beverley and Dennis Wolgin

Mazel Tov on the Bar Mitzvah of Jonah Eaton – Marsha and Neil

Millman

MINDELL/KUTINSKY EMERGENCY NEEDS MEMORIAL FUND

Provides emergency assistance to families in crisis.

In Honor Of:

Mazel Tov on the birth of Delilah – Lisa and Seth Mindell & Family

In Memory Of:

Terry Gladstone – Lisa and Seth Mindell & Family

Jerry Kurtis – Sheila Lipschutz; Lisa and Seth Mindell

Marking Yahrzeit Of:

Charles Fenberg; Lillian Fenberg – Robin and Michael Fenberg

ISAAC z"l & YETTA PANN BIKKUR CHAVERIM FUND

Provides volunteer support and materials for visitation of home bound/nursing home individuals.

In Honor Of:

Mazel Tov to Mr. and Mrs. Alan Finer on the High School Graduation of your grandsons, Brandon and Noah; Mazel Tov on the wedding of Amy Freeland and Jacob Ishbia; Mazel Tov on your award Judge

Bernard Friedman; Mazel Tov on the college Graduation of Gabe

Kirschner; Wishing a speedy recovery of Melvin Menuck; Mazel Tov on

the special birthday of Paula Menuck; Mazel Tov on the 50th wedding anniversary of Paula and Melvin Menuck; Mazel Tov on the Temple

Israel Graduation of Rachel Perry; Mazel Tov on the Bat Mitzvah of

Jillian Schiffer; Mazel Tov on the Temple Israel Confirmation of Zoe

Schiffer; Mazel Tov on the Temple Israel Graduation of Benjamin

Stern; Mazel Tov on the Temple Israel Confirmation of Daniel

Stern; Mazel Tov Lillian and Jimm White on the marriage of your

granddaughter – Yolanda and David Tisdale

Mazel Tov on your special birthday David Tisdale – Paula Menuck

In Memory Of:

Beloved Mother of Mr. and Mrs. Nicholas Banks; Alan Barry; Darren Hessenthaler – Yolanda and David Tisdale

Marking Yahrzeit Of:

Maria Pajewski – Helen Anspach

IRVING & SARAH PITT COLLEGE SCHOLARSHIP FUND

Provides college scholarships to deserving Temple Israel seniors.

In Honor Of:

Mazel Tov on the Bar Mitzvah of Noah Tepper – Caryn and Steve Gross

PRAYER BOOK FUND

Provides prayer books and other religious publications for Temple Israel use.

In Memory Of:

Jimmy Gell; Elaine Greenspan; Marlene Weisman – Teri and Mark Goodman

Kimberly Yorke – Sharon and Mel Fishman

RABBIS' DISCRETIONARY FUND

For charitable purposes.

In Honor Of:

In appreciation of Rabbi Josh Bennett – Dylan Bennett; Risa and Jay Levinson & Varsha and Michael Jurewicz

Mazel Tov on the 75th birthday of Steve Frank; Mazel Tov Joan and Steve Redisch on the B'not Mitzvah of Brooke and Maya – Eileen and Howard Young

Mazel Tov on the Temple Israel Confirmation of Jacob Bennett – Shari and Stanley Finsilver; Carolyn and Steven Marks

Mazel Tov on the Temple Israel Confirmation of Graycin Bleiberg – Carolyn and Steven Marks

In appreciation of Rabbi Marla Hornsten – Amy and Kevin Weiss

In appreciation of Rabbi Jennifer Kaluzny – Risa and Jay Levinson & Varsha and Michael Jurewicz

In celebration of Benji Stern's Graduation from BHS and Temple Israel; Mazel Tov on the Temple Israel Confirmation of Danny Stern – Shari and Stanley Finsilver

Mazel Tov on the special birthday of Sharon Turken – Dina and Barry Pinsky

In appreciation of Rabbi Paul Yedwab – Emily, Mark, Marley and Jonah Eaton; Susan Gilman; Linda and Edward Shapiro

In appreciation of Wendy and Rabbi Paul Yedwab – Susan Stallard and Allan Huss

Mazel Tov on the 90th birthday of Murray Yolles – Sandy Tuttleman

In Memory Of:

Alan Barry – William D. Isenstein

Lillian Binder – Harriett Freedman

Philip Blinder – Debra and Gary Yashinsky

Natalie Canvasser – Barbara Dubb; Harriet Freedman

Joan Cohen – Sandra Tuttleman

Jimmy Gell – Julie and Arthur Rott

David Goldman – Margie and Harvey Goldman; Roberta Fleisher Gordin

Arthur Klass; Jackie Lorfel – Barbara Dubb

Dr. Irvin M. Lefton – Arts and Letters Creative Company; Barbara and Marshall Disner; Annette Greenstein & Family; Trish and Art Hurvitz; Deborah and Stuart Logan; Nina and Jeff Lopatin; Mark Migdal; Jo Elyn and George Nyman; Gary Plasko; Joan G. Smith; Alice and Mark Zacks

Amy Ryberg – Natalie Mills

Leanne Small – Lee Turner

Marking Yahrzeit Of:

Rose Nankin – Linda Arens

FAYE & DON REIFLER MEMORIAL YOUTH TRIP SCHOLARSHIP FUND

Provides scholarships to Temple Israel youth group members to attend youth trips.

In Memory Of:

Lillian Binder – Carol and Ross Fridson; Harriette Kligman & Family Jonathan Mamat – Liza and Alan Reifler

Marking Yahrzeit Of:

Faye Reifler – Ann and David Rosenberg

JEFFREY DAVID ROCHEN MEMORIAL FUND

Provides programming for suicide prevention and to combat bullying for young people in our community.

Marking Yahrzeit Of:

Milton Rothen – Phyllis and Don Rothen

GEORGE & ANNE ROTH YOUTH EDUCATION & AWARENESS FUND

Educates our Religious School students through programming.

In Memory Of:

Rose Hechler – Sandra and Edward Rosenbaum

MICHAEL N. ROTH CAMP SCHOLARSHIP MEMORIAL FUND

Provides support for URJ camperships.

Marking Yahrzeit Of:

Marie Krebs – Janie Roth

LYNN & HARVEY RUBIN SOCIAL ACTION FUND

Funds social action programming.

In Honor Of:

Wishing a speedy recovery of Roger Black – Randy and Bev Phillips

Mazel Tov Carole and Larry Miller on the High School Graduation of your grandson Ben; Mazel Tov Beverly Scharg & Family on the marriage of your son Jordan – Lynn and Harvey Rubin

In Memory Of:

Stan Freedman – Lois and Alvin Rubin

Eugene Friedman – Janie and Robert Starkman

Dr. Arthur Klass; Ron Wolf – Lynn and Harvey Rubin

Dr. Irvin Lefton – Bob Grant

SAMSON FAMILY MINYAN FUND

Assists in the expenses of the daily Minyan.

In Honor Of:

In appreciation of Barb and Norm Samson – Mona and Mark Dembs

In Memory Of:

Alan Barry; Terry Gladstone – Barbara and Norman Samson

Jennie Infeld – Carol and Ross Fridson; Allen Mehler, Marilyn Mehler & Sue and Nick Hersh; Barbara and Norman Samson & Family

ABRAHAM SEIDERMAN HIGHER-EDUCATION FUND

Provides financial assistance to a student still striving to achieve their academic potential through vocational, trade school, or college education

In Honor Of:

In appreciation of Abraham Seiderman Fund – Adrienne and Tom Runyan

Marking Yahrzeit Of:

Helen Levy – Seiderman Family

DR. ROSE MALACH SEXTON MEMORIAL FUND

Provides a campership to a Temple Israel student for travel to Israel.

In Honor Of:

In appreciation of Rabbi Josh Bennett – Suzi and Steve Malach

SUSAN SHANKER CAMP SCHOLARSHIP FUND

Provides a UAHC campership to a Religious School student.

In Honor Of:

Mazel Tov on your award Judge Bernard Friedman – Marlene and Ronald Rosen

In Memory Of:

James Gell – Beverly and Richard Bernstein; Nancy Myler and Gene Bessent; Judy and Irving Blau; Linda and Robert Bodzin; Nancy and Phillip Bortman & Family; Boston Consulting Group, Chicago; Sonny Cohn; Marilyn Shepherd and David Engelman; Karen and Ricky Erlich;

Marcia and Roger Fenton; Tim and Toni Foley & Family; Paula and Lou Glazier; Shelley and Richard Golden and Jessica Golden; Kal Goren; Fran and Michael Goran; Dana and Joel Ishbia & Family; Nancy and Jim Jonas; Jan Kaplan; Andrea Edelson Ketchel; Helene and Ron Kroll; Ruth Lax; Barbara Leshman; Joani and Jim Lesser; Marsha and Dr. Neil Millman; Rhoda Paull; Dina and Barry Pinsky; Elaine and Barry Resnick; Caryn and Hersh Rothenberg; Lisa and Steve Rotter; Linda Shapiro & Family; Lauren Jensen, Shishir Pathak and Abhijeet Shetty; Marci and Marvin Shulman & Family; Alan and Lenore Deutch-Singer; Andrea and David Sklar; Jay Smith; Jeff Smith; Arlene Stern; Sherrie and Nory Stern; Sherry and Danny Stewart; Debbi and Harvey Stybel; Debbie and Norman Trepeck; Judith Trepeck; David and Shelley Wainer; Ellen and Marc Whitefield; Evelyn and Lou Wolff; Marla Zack

EVAN SHAPIRO FUND FOR THE FIGHT AGAINST CANCER

Provides cancer awareness educational programs at Temple Israel.

In Memory Of:

Darren Hessenthaler – Carol Plotnik

TEMPLE ISRAEL SISTERHOOD FUND

Supports Temple Israel Sisterhood programming.

In Honor Of:

Mazel Tov Shellie Achtman on the engagement of your Son; Mazel Tov Sue Hersh on the birth of your granddaughter; In appreciation of Rabbi Marla Hornsten; Mazel Tov on the Bat Mitzvah of Jillian Schiffer – Andi and Mark Weiss

Special birthday of Andi Weiss – Sherelyn Kahn

In Memory Of:

Stanley Freedman; Jimmy Gell; Florence Levy – Andi and Mark Weiss
Jo Margery Gilbert – Wendy and Larry Kohlenberg
David Goldman – Camille and George McMillan; Temple Israel Sisterhood

Rose Hechler – Sarita Bagdade; Seth Barnett; Carol Berg; Laurie and Mark Blinder; Randa and Richard Feldman; Roslyn Garber; Sue and Danny Kaplan; Gail Katz; Carol Lawson; Debbie Lipson; Camille McMillan; Marilyn Nathanson; Nayda Schwartz; Sheri and Norton Stern; Essie Stillman; Andrea Stoler; Judy Wayne

SISTERHOOD GREENHOUSE FUND

Provide support for the Early Childhood Center Greenhouse.

In Honor Of:

Mazel Tov Elissa and Danny Kline on your 50th wedding anniversary – Yolanda and David Tisdale

Mazel Tov Wendy Kohlenberg on your installation to the WRJ Board of Directors; Mazel Tov Nayda Schwartz on your installation to the WRJ Board of Directors – Susan L. Singer

In Memory Of:

Rose Rifkin Hechler – Brenda and Mark Altus; Karen and Ricky Erlich; Eileen and Jerry Isenberg; Elissa and Daniel Kline; Wendy and Larry Kohlenberg; Therese Marie Martin; Lance Mermell and Rachel Mermell; Annette Neuvirth; Eileen Gunsberg and Marcie Gunsberg Posner; Debbie Rottman; Andi and Larry Wolfe
Jackie Lorfel – Jan and Barry Lorfel

KOLE-OTIS-SKLAR FAMILIES EARLY EDUCATION FUND IN MEMORY OF SHEILA OTIS SKLAR, ROSE WEIDER OTIS, IRVIN OTIS & DR. BERNARD KOLE

Supports Nursery (ECC) Tot Shabbat picnic programs.

In Memory Of:

Dr. Bernard Kole – Karen and Allen Amber; Sara Braverman; Lisa Cohen; Lynn Fink; Mr. & Mrs. Robert Labe; Bryna and Jeff Leib; Suzanne and Marc Lipshaw; Robert and Andrew Littman; Shelly Mendelson; Michelle and Michael Sarver
Jackie Lorfel – Jan and Barry Lorfel

ROBERT SOSNICK FAMILY LIFE CENTER ENDOWMENT

Supports Temple Israel's Family Life Center.

In Honor Of:

Mazel Tov on the Temple Israel Confirmation of Max Eisman – Shari and Stanley Finsilver

STARK FAMILY FUND

Provides family programming.

In Honor Of:

In appreciation of Rabbi Eric Stark – Anonymous

TEMPLE ISRAEL ECC PLAYGROUND EQUIPMENT FUND

Supports new playground equipment for the Early Childhood Center.

In Honor Of:

Mazel Tov on the Bat Mitzvah of Ella Stybel – Andrea and Richard Ketchel

DOROTHY THAL SUMMER CAMP FUND

An award to a Temple Israel youth wishing to participate in a Jewish camp program.

In Memory Of:

Bruce Thal – Theresa Stickney

THE TOBIAS FUND

Leadership opportunities for Temple members.

In Honor Of:

Mazel Tov on the Temple Israel Graduation of Charlie Tobias – Yolanda and David Tisdale

Wishing a speedy recovery of Marc Whitefield – Bobbi and Ron Gordon

LEONARD & ROSLYN TRUNSKY COLLEGE SCHOLARSHIP FUND

Supports scholarship funding.

In Memory Of:

David Goldman – Isabel and Milton Dzodin

SUZANNE & HERBERT TYNER RELIGIOUS SCHOOL FUND

Provides religious school funding.

In Honor Of:

Mazel Tov on the wedding of Casey and Jacob 'Spike' Kraus; Mazel Tov on the wedding of Stevie DuFresne and Josh Roberts – Rabbi Arianna Gordon and Tyner Religious School Team

JACKIE UNATIN MEMORIAL CHANUKAH FUND

Provides holiday celebrations for those in need, through the Temple Israel No Temple Family Without A Chanukah Program.

In Memory Of:

Herb Siegel – Allan Gurvitz

JUANITA & GEORGE VICTOR MI SHEBEIRACH BLANKET FUND

Provides Mi Shebeirach blankets to hospital, nursing home and rehab patients.

In Honor Of:

Mazel Tov Brayden Brodsky on your Temple Israel Confirmation; Mazel Tov to Dr. Burton Brodsky; Mazel Tov Carson Brodsky on your Temple Israel Graduation; Wishing a speedy recovery of Marc Whitefield – Yolanda and David Tisdale

Mazel Tov on a special birthday Annie Weiss – Linda Brodsky

In Memory Of:

Kevan Kreitman; Iris Rosen; Leanne Small – Sheri Lee and Dennis Brodsky

WEINSTEIN ISRAEL TRIP SCHOLARSHIP FUND

Grants a scholarship to a Temple Israel student for travel to Israel.

In Honor Of:

Mazel Tov on the Bar Mitzvah of Brooks Kogan Barron – Allison and Michael Weinstein & Family

In Memory Of:

Alan Barry – Judith and Sydney Weinstein

THE WELL – A PROJECT OF THE LORI TALSKY ZEKELMAN FUND

Supports programs for The Well.

In Honor Of:

Mazel Tov on the 90th birthday of Martin Fabrikant – Gayle and Gary Samuels & Family

WENDY & RABBI PAUL YEDWAB YOUTH ENRICHMENT FUND

Supports a variety of youth enrichment activities offered or sponsored by Temple Israel.

In Honor Of:

In appreciation of Rabbi Paul Yedwab – Sheree and Wayne Bloch
In appreciation of Wendy and Rabbi Paul Yedwab – Gayle and Gary Samuels

In Memory Of:

Dick Gottlieb – Paula and Larry Berger
Jonathan Mamat – Marilyn and Paul Meyer

YOUTH ISRAEL PILGRIMAGE FUND

Supports youth scholarships for Temple Israel sponsored trips to Israel.

In Honor Of:

Mazel Tov on the Bat Mitzvah of Ella – Sue and Abe Gershonowicz
Mazel Tov on the marriage of Jaimie and Mitchell – Lisa and Richard Broder
Mazel Tov on the wedding of Allison and Seth Samuels – Helene and Ronald Kroll

In Memory Of:

David Eidelman – Debbie and Milt Stern
Melvin Freeman – Sherrie and Norty Stern

JUDITH & RICHARD ZATKIN YOUTH FUND

Provides resources for Youth Group programs.

In Honor Of:

Mazel Tov on the Bat Mitzvah of Jillian Schiffer – Lynn and Don Apel

In Memory Of:

Jo Gilbert – Apel Family; Jodie Polk
Rose Hechler – Lynn and Don Apel; Jodie Polk
Barbara Weisberg – Lynn and Don Apel

FUNDS BEING FORMED

PHYLLIS & DR. GERALD z"l BRICKNER FAMILY FUND

In Memory Of:

Sandra Edelstein Ordower – Julie and William Stern

RYAN DEMBS MEMORIAL FUND

In Honor Of:

Mazel Tov Mrs. Ashley and Dr. Brian Adelman on the marriage of your daughter Madeline; Mazel Tov on the Bar Mitzvah of Evan – Lindsay and Brian Hords

Mazel Tov Beth and Bruce Gursky on the Bar Mitzvah of your grandson Dylan; Mazel Tov Marty and Simon Rotberg on the Bar Mitzvah of your grandson Ommi; Mazel Tov Marty and Simon Rotberg on your special birthdays – Debby and Harvey Stybel

In appreciation of Rabbi Jen Lader – Lori and Brian Serlin

Mazel Tov Rebecca and Matthew Zusel on the Bar Mitzvah of your son Drew – Judy and Irv Blau; Lindsay and Brian Hords & Talia and Isaiah Rubin

In Memory Of:

Dr. Enrique Benjamin Gerbi – Lindsay, Brian, Isaiah and Talia

AARON FENTON MEMORIAL FUND

In Memory Of:

Alan Barry – Marcia and Roger Fenton; Sheila and Mark Fenton
Jill Friedman – Sheila and Mark Fenton
Anne Coleman – Marcia and Roger Fenton; Bobbie and Larry Warsh
Lawrence Tucker – Marcia and Roger Fenton

DR. JOEL FORMAN FAMILY CHALLAH ROLL FUND

In Honor Of:

Mazel Tov on the 80th birthday of David Cuttner; Mazel Tov on the Confirmation of Dani; Mazel Tov on the High School Graduation Lexi – Linda Forman

In Memory Of:

Ernest Able; Melvin Freeman; Carolyn; Matulef – Linda Forman
Eugene Friedman – Jan and Bob Emmer

MELVIN FREEMAN MEMORIAL FUND

In Honor Of:

In appreciation of Loren Blumberg – Norrine Freeman

In Memory Of:

Melvin Freeman – Etta Bernard; Natalie and Sidney Blatnikoff; Judy and Irving Blau; Maria and Jeffrey Freeman; Linda and Joel Garfield; Paula and Jay Korelitz; Rhoda Paull; Eileen Gunsberg and Marcie Posner; Marlene and Ronald Rosen; Saturday Tisch Friends; Yolanda and David Tisdale; Pam Torrace

DAVID & STACY GORDON FAMILY "DO GOOD FUND"

Supports programming at Temple Israel that benefits the greater good of our community geared toward social action endeavors.

In Honor Of:

Mazel Tov on the college Graduation of Madison Bennett; Mazel Tov on the Temple Israel Confirmation of Jacob Bennett – Yolanda and David Tisdale

Mazel Tov on the engagement of Meredith and Brett; Mazel Tov on the marriage of Lauren Sallen and Dorin Deitch; Mazel Tov on the 60th birthday of Mr. David Gordon; Mazel Tov Brad Luckoff on your Graduation from Michigan State University – Laini and Larry Freed

In Memory Of:

Natalie Canvasser; Norman Rotter – Arlene Licht
Stanley Freedman – Diane, John, Ben & Lauren-Paige Krawitz

Marking Yahrzeit Of:

Nettie Firestone – Ellen Firestone
Pat Shanbom – Andrea, David, Marissa, Jake and Josh Siegel

RICHARD MONASH CARING FUND

In Honor Of:

Mazel Tov on the marriage of Molly and Jacob Levine – Donna and Jack Belen; Barbara and Norman Samson

In Memory Of:

David Goldman – Carol and Ross Fridson; Phyllis and Gary Levitt

STANLEY SATOVSKY FAMILY FUND

In Memory Of:

Edith Katz – Carole and Howard Satovsky & Family

TEMPLE ISRAEL "HELP FROM AFAR FUND"

Supports immigration aid.

In Honor Of:

Mazel Tov on the 80th birthday of Mickey Mackey – Lois and Barry Simon

In Memory Of:

Jonathan Mamat – Arlene and Alan Gottlieb, Amy and Bryan Gottlieb & Family and Bridget and Daniel Gottlieb
Miriam Goldman; Dr. Gerald Trager; Gertrude Trager; Nathan Trager – Harriet Trager

JEFFREY SURNOW MEMORIAL FUND

In Memory Of:

Alan Barry – Debbie and Norman Trepeck
Debby Hocking; Rudolph Keller – Wendy and Ron Gruskin

TO MAKE A TRIBUTES ONLINE, GO TO
WWW.TEMPLE-ISRAEL.ORG/TRIBUTEFUNDS



USPS 538-040

5725 Walnut Lake Road | West Bloomfield, Michigan 48323
Phone: 248-661-5700 • Fax: 248-661-1302
Tyner Religious School: 248-661-5725 • Fax: 248-661-5790
The Susan & Rabbi Harold Loss Early Childhood Center: 248-661-5750
Temple-Israel.org

Volume 64 • July/August 2022 • Number 4
Affiliated with the Union for Reform Judaism

Non-Profit Org.
US Postage
PAID
Permit No. 902
Royal Oak, MI

Time sensitive material enclosed.

Clergy

Rabbi Harold S. Loss | Rabbi Paul M. Yedwab
Rabbi Joshua L. Bennett | Rabbi Marla R. Hornsten
Rabbi Jennifer T. Kaluzny | Rabbi Jennifer M. Lader
Cantor Michael Smolash (*The Stephen Gottlieb₂₁ Cantorial Chair*)
Cantor Neil Michaels (*The Stephen Gottlieb₂₁ Cantorial Chair*)
Rabbi Leon Fram (1895-1987) | Rabbi M. Robert Syme (1920-2003)
Cantor Harold Orbach (1931-2014) | Cantor Robert Tulman (1904-1960)

Professional Staff

Rabbi Arianna L. Gordon, RJE - *Education & Lifelong Learning Director*
Rabbi Jeffrey Stombaugh - *Director of The Well*
Jason Plotkin - *Executive Director*
David M. Tisdale - *Strategic Development Director*
Julie Eisman Levy - *Early Childhood Center Director*
Kari Provizer, LMSW, ACSW - *Family Life Center Director*
Cassi Cohen - *Communications & Membership Director*
Miriam Baxter - *Human Resources Director*
Maya Grinboim - *Music Production Director*
Eric Groh - *Facilities Director*
Gary Breuer - *Controller*

Officers

Joseph Bigelman - *President*
Andrew Bocknek - *Vice President* | Debra Gordon - *Vice President*
Lee Hurwitz - *Treasurer* | Amy Brody - *Secretary* | Jodi Neff - *Member At-Large*
Hilary King - *Past President*

HIGH HOLY DAYS ARE COMING

AND WE CAN'T WAIT TO WORSHIP WITH YOU!

EREV ROSH HASHANAH SERVICES Sunday, September 25

ROSH HASHANAH SERVICES Monday, September 26

KOL NIDRE SERVICES Tuesday, October 4

YOM KIPPUR SERVICES Wednesday, October 5

SUKKOT YIZKOR SERVICES Sunday, October 16

SIMCHAT TORAH SERVICES Sunday, October 16

More information regarding service times to come.