



## 2018 ANNUAL REPORT

### Who We Are:

The Beth Ahabah Museum & Archives, Richmond's museum of Jewish history, art and culture, is located at 1109 West Franklin Street. It is housed in a 20th century row house east of the sanctuary of Congregation Beth Ahabah in Richmond's historic Fan District.

Beth Ahabah established the Congregation Beth Ahabah Museum & Archives Trust in 1977. Though initially devoted to materials related to Beth Ahabah's own history and that of 1789's K.K. Beth Shalome, the first synagogue in Richmond and Virginia, the Museum & Archives now serves the entire Jewish community of Richmond and the American South. The Museum's archival collection details the history of the Jewish community in Richmond with documents, photographs, letters and other items donated by individuals and Jewish organizations.

### On Exhibit:

Our newest exhibit "Count Me In!" is dedicated to the response of Richmond's Jews to World War I. 234 Jewish men from the area served in the armed forces. The community contributed both time and money to the war effort.

Look for a new exhibit entitled "Beyond the Temple Walls" opening in the fall. The exhibit illustrates the many ways in which members of the Richmond Jewish community have served the overall community through the years.



### Our Mission:

The Beth Ahabah Museum & Archives collects, preserves and exhibits materials that relate to Jewish history and culture—with particular emphasis on Richmond, Virginia—so that Jewish history and culture may be documented, interpreted and passed on to future generations.



*A WWI poster promoting the purchase of bonds to finance the war effort and promote patriotism.*

## A Message from the President & Director:

Forty-one years ago, Congregation Beth Ahabah ensured the long-term care and safekeeping of the Congregation's valuable collection of documents, photographs, paintings, ceremonial objects and artifacts by creating the Beth Ahabah Museum & Archives Trust, along with nine congregational member trustees. The Trust was also charged with promoting scholarly research and education and encouraging donations to enrich the collection.

As we reflect on year forty, it has been both busy and productive. Over 900 guests toured our galleries. We opened a new exhibit, "Count Me In! Richmond's Jews Respond to World War I." The staff supported the congregation in a multitude of ways: documenting the campus construction, maintaining and enhancing the archival records of Richmond's Jewish community and Congregation Beth Ahabah, assisting researchers and establishing a video archive of interviews with members of the congregation.

We hosted tour groups from Richmond, Northern Virginia and Maryland who visited the Museum & Archives and the sanctuary, and on occasion, Hebrew Cemetery, and spoke about Richmond's Jewish history to local organizations. We also began a cooperative relationship with VCU Libraries' Social Welfare History Image Portal project.



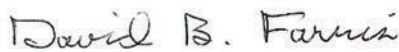
David M. Sacks, President

We are pleased to report that the Museum & Archives is in a sound financial position thanks to your generous support. In the coming months, we look forward to hosting more events and increasing our presence within the Beth Ahabah community. Of particular note is the third annual Beth Ahabah Artists Exhibition and Oneg Shabbat on August 3rd, and the fall opening of our newest exhibit, "Beyond the Temple Walls—A Commitment to Community."

Our officers and Board of Trustees remain dedicated to maintaining the vision of the nine original trustees to "enhance the education of Beth Ahabah members and the general public" through cooperative programming, continued outreach, and preservation of the congregation's collection.

We encourage all Beth Ahabah members and the wider Jewish community to visit the Museum & Archives, provide your ideas and suggestions, participate in our activities, think of us as a permanent home for your valuable artifacts, share your time with us as a museum volunteer, and help sustain us into the future. The Museum & Archives staff are extremely knowledgeable and eager to assist.

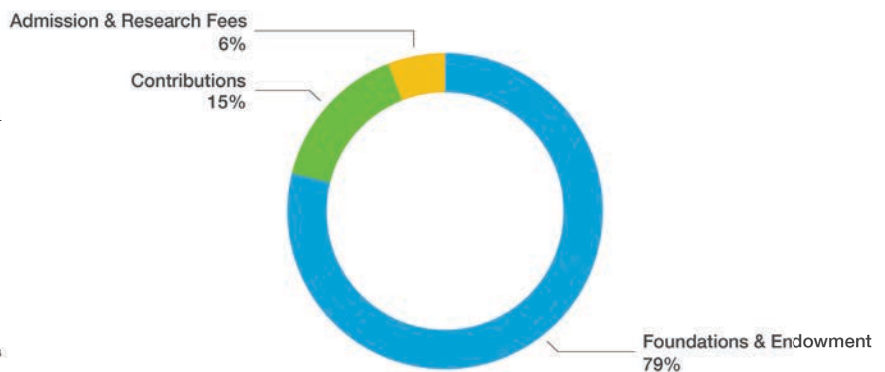
Thank you for your support of your Museum & Archives.



David B. Farris, Director

## Museum & Archives Annual Income Sources:

The Beth Ahabah Museum & Archives is supported by gifts from several foundations and funds, over 100 Beth Ahabah families and friends, and income from research and admission fees.





*This 1891 photograph of a stalwart group of Beth Ahabah members preparing for a ride to Hampton is featured in the new “Richmond Memories” coffee table book.*

### **Making Richmond Memories:**

Look for photos from the Museum & Archives collections such as this image of the Richmond Bicycle Club, circa 1891, in the new hardcover, coffee-table book, “Richmond Memories: The Early Years” published by *The Richmond Times-Dispatch*.

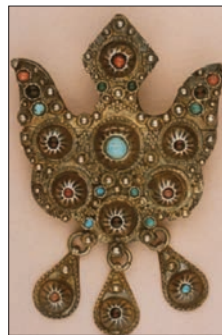
The book features a glimpse of Richmond from the early years through 1939. We’re thrilled to have been part of this exciting project along with such storied Richmond institutions as The Valentine, The Black History Museum and Cultural Center of Virginia, Virginia Commonwealth University and Virginia Union University. Photographs from our collection will also be featured in the second volume of “Richmond Memories II” covering the 1940s, 50s and 60s, now available to pre-order on richmond.com.

### **Community Events:**

Our Museum & Archives sponsors events featuring the work of artists who are members of the Beth Ahabah and Richmond Jewish community. These range from large events in multiple spaces to smaller events in the Museum held in conjunction with after-service Oneg Shabbat gatherings.

### **Art in the Beth Ahabah Collection:**

We are proud to have been entrusted with many paintings, photographs and other works of art that are important to the history of the Richmond Jewish Community. Some are by artists who were well-known in past years, and others are by more contemporary members of the community and our own congregation. We are trusted by donors and lenders because they realize that we offer the only combination of Jewish values, respect for family history, and professional care available in Richmond. The term “Art” is not limited to paintings and photographs. We have many objects representing artistic excellence in other materials such as various metals, wood and paper.



*Amulet donated by friends of Robert Reinhard and Gilbert Rosenthal in honor of their birthdays.*

## Volunteering at the Museum & Archives:

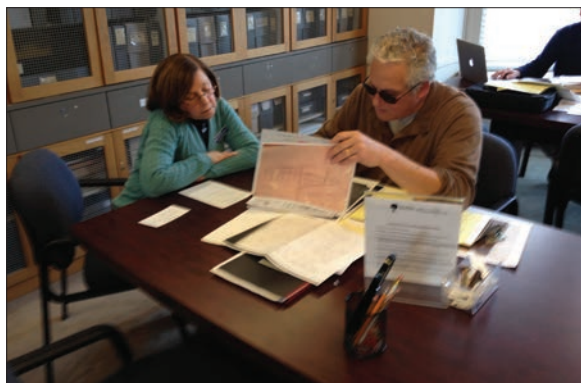
We are grateful for the assistance of volunteers who support us with their expertise and experience in many ways. Their contributions range from the seemingly mundane filing of documents in the Archives to the scholarly analysis of documents, to the creation of new exhibits which tell our stories to the community at large. No task here is insignificant—all are important, and even the most basic are necessary if we are to fulfill our mission. We are indeed fortunate to have them with us.

We appreciate the volunteer assistance of the following people during the past year: Paul Ballonoff, Genie Crawford, Mary Ellen Jackoway, Susan Morgan, Helen Newpol, Peter Oppen, Mark Schein and Carol Sesnowitz.

Interested in volunteering at the Museum & Archives? Contact David Farris at [bama@bethahabah.org](mailto:bama@bethahabah.org)

## Research in the Archives:

Our Archives regularly hosts researchers from the academic world as well as people from all over the world desiring to learn more about the history of Jewish Richmond and/or their own families. In addition, our staff responds to written, emailed and telephoned requests from persons wanting information about the Richmond Jewish community.



*Bonnie Eisenman assists a visitor to the Archives with his family research*



*A Midsummer Night's Dream, paper construction loaned for "Jewish Women in the Arts" by Sally Vitsky.*

## Consider Donating to the Museum & Archives:

Family records and trees, photographs and portraits, and items of Judaica are always welcome additions to our collection. Please consider donating your treasures to us so that they enhance the story of Richmond's Jewish community. Contact us for further information about donating to our collection.

## Officers & Board:

David Sacks, President	Barbara Goldberg
Sharon Bassell, Treasurer	Josh Jeffreys
Terry Schultz, Secretary	Judy Malloy
Shelly Berger	Helen Newpol
Rena Berlin	Larry Salomon
Genie Crawford	Nicole Sackley
Robert Flax	

## Museum & Archives Staff:

David Farris, Director  
Bonnie Eisenman, Administrator/Researcher  
Amy Roberts, Docent/Administrative Assistant