

December 2022 | Kislev 5783

temple
sinai 
Your Journey. Your Home.

Our Journey

Our Home

END OF YEAR MESSAGE FROM ADAM MAYER

EXCITING CHANGES TO SINAI CAMPUS

CULTURE OF BELONGING

BECAUSE OF YOU

TABLE OF CONTENTS

End of Year Message from our President	4
Culture of Belonging	4
Legacy Sinai	5
B'nei Mitvah	6
Exciting Changes to Campus	7
Because of You	8
Meet The Freedman Family	8
Alef Fund	10
Tzedek Spotlight	10
Transitions	11
Contributions	13
Give the Gift of Jewish Education	20

SINAI HAS SO MUCH TO OFFER!

This new magazine, *Our Journey, Our Home* focuses on community building and stewardship. We hope you visit our online calendar, take a look at the monthly calendar of events that is mailed to your home or check your inbox for more information on everything we have to offer.

At Temple Sinai, we strive to create meaningful experiences for everyone. We hope this year you'll participate in one of our many events, as well as opportunities to learn, worship and volunteer together. Join us for a Brotherhood or Women of Sinai event, learning program, or youth group event. Bring your family to a Tot Shabbat, join adults at any age for a gathering, or worship with us for Shabbat. Visit our Temple Sinai calendar to see what's happening. We hope to see you soon! templesinaiatlanta.org/calendar



SAVE THE DATE

A Toast to Temple Sinai
The evening of April 30, 2023
More details to follow!





Temple Sinai Board of Trustees & Staff

Spiritual Leadership

Rabbis
Ronald M. Segal
Bradley G. Levenberg, PhD
Samantha S. Trief
Philip N. Kranz, Emeritus
Bunzl Family Cantorial Chair
Beth Schafer

Administration

Executive Director
Jack J. Feldman, FTA
Associate Executive Director
Shelly Dresdner
Director, Operations & Events
Jaimee Boettcher
Facilities Manager
Andre Parker
Director, Human Resources & Accounting
Michele Harvey
Accounting Associate
Amanda Rountree
Senior Clergy Assistant
Rachel DeLine
Clergy Assistant
Erica Faircloth
Front Office Assistant
Michele Goodelman
Audio/Visual Manager
Chas Cloud

Membership & Engagement

Congregational Engagement Managers
Carrie Bohn
Avery Friedman
Membership & Development Manager
Darby Citrano

Center for Learning and Engagement

Charles S. Ackerman Senior Director of Learning & Engagement
Marisa Kaiser, R.J.E.
Director, Early Childhood Learning & Engagement
Jamah Maman
Director, B'nei Mitzvah Program
Sharon Clark
Director, Adult Learning
Rabbi Natan Trief
Director, Youth Learning & Engagement
Rachel Moldovan
Director, Teen & Family Learning & Engagement
Jennifer Quick
Center for Learning & Engagement Assistant
Jenny Mopper
Family Outreach Manager
Liz Reynolds
Preschool Office Manager
Lynn Sullivan
Preschool Operations Manager
Rebecca Cohen

Communications

Director, Communications
Andrea Fineman
Graphic Design Associate
Dayla Jackson
Digital Marketing Associate
Helaine Milch-Schroder

Board of Trustees

President
Adam Mayer
President-Elect
Robert Sinsheimer
Vice President of Communications/Secretary
Lara Dorfman
Vice President of Community
Steve Pepper
Vice President of Development
Chuck Fox
Vice President of Education
Paul Jacobs
Vice President of Membership
Linda Bachmann
Vice President of Spiritual Life
Michelle Young
Treasurer
Darrin Friedrich
Assistant Treasurer
Brad Marcus
Immediate Past President
Lynn Redd
Members
Melissa Blecker
Benji Ellis
Steven Eisenstein
Craig Fagin
Steven Fair
Sarah Lazarus
Gene Morgan
Robin Rosenthal
Lisa Seigle
Matt Spett
Pam Sugarman
Shaun Weinstock
Jeff Wolff
Women of Sinai Trustee
Jan Jay
Brotherhood Trustee
Adam Lazarus
Teen Trustee
Katherine Poch
URJ Board Members
Steve Berman
Jan Epstein
Howard Fagin
HUC-JIR Board Member
Joy Greenberg

To reach President Adam Mayer, email president@templesinaiatlanta.org.
To reach staff via email, please use first initial, last name@templesinaiatlanta.org.
(Ex: rsegal@templesinaiatlanta.org)

Accessibility Services

Need assistance? Temple Sinai has concierge services available to assist and connect individuals and families with disabilities with resources both at Sinai and in the community. Please contact our Hineini Concierges, Ina Enoch, at ina.enoch@gmail.com or Jan Jay, at concierge@templesinaiatlanta.org.

A Message from our President



Dear Sinai Family,

"Welcome home!" I have had the great pleasure of using that phrase innumerable times this year with our fellow congregants. After months of differing levels of isolation and pandemic-related precautions, community means more now than ever before. Our Temple Sinai community is remarkably blessed with our beautiful facilities, incredible clergy, staff and teachers, and of course, with you, our congregational family.

As we say goodbye to 2022 and look forward to the year ahead, I want to take this opportunity to invite you to prioritize Temple Sinai and all of our amazing opportunities to connect in 2023, and to simply say thank you. Thank you to everyone who has been part of this incredible year at Temple Sinai. To those who have worshipped with us, learned with us, cried with us, laughed with us, mourned with us, and celebrated with us, thank you! To all of those who have contributed to Temple Sinai via your time, energy, love, and financial support, thank you! Temple Sinai is extraordinary because of you.

As the calendar once again marches on to another secular new year, I invite you to spend a little more time with us in 2023. Take the time each week or month to look at the Temple Sinai calendar (www.temple Sinaiatlanta.org/calendar)

and find something of interest to you. As we continue to explore what belonging means to each of us, come be a part of our thriving community and make Temple Sinai your home as well.

Wishing you all the best in 2023 and always,

Adam D. Mayer
President, Temple Sinai

Culture of Belonging

Temple Sinai's Culture of Belonging (CoB) initiative has officially begun! As was shared earlier this year, we are engaging in a project intended to help us understand what contributes to a sense of belonging and deepen that connection in the years ahead.

Upcoming Listening Forums:

Temple Sinai Preschool Parents -
January 18, 9:30 pm

Multi-faith Families - January 22, 6:00 pm

Parents of Teens - February 5, 10:00 am

Scan the QR code or visit
temple Sinaiatlanta.org/CoB to register



More listening forums are being scheduled so stay tuned for details!



Legacy Sinai



Legacy Sinai is the planned giving program for Temple Sinai.

The mission of Legacy Sinai is to create a pathway for Temple Sinai's future and long-term financial sustainability.

In recent years, Sinai has been the beneficiary of some impactful estate gifts from members, yielding significant resources which have enhanced our Endowment, supported capital improvement efforts, and contributed to the strong future of our congregation.

We are also fortunate to have a growing number of Legacy Sinai members and are excited to share two of their stories below.

If you have set up a legacy gift or bequest, please make sure to inform the Temple Sinai office so we can recognize your commitment and gift; please email Darby Citrano at dcitrano@templesinaiatlanta.org.

Melissa and Ira Blecker, members of Temple Sinai for nearly 13 years, originally joined Sinai to be part of a welcoming community and environment. However, they shared that they have grown in their relationships with the clergy and staff, served in various leadership roles and have gone through several life cycle events at Temple Sinai – many with their two children, Abram (14) and Micah (11).

When asked why they decided to create a legacy gift for Temple Sinai, Melissa and Ira's answer was simple:

"Temple Sinai has meant a lot to our family. A legacy gift to Temple Sinai is something we can plan for now and know that future generations will benefit. A legacy gift is a future gift that you plan for now that benefits a nonprofit or charity after your lifetime."

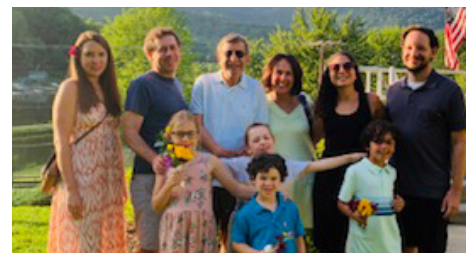
And for any who are curious how to start the process of creating a legacy gift, they also shared that the process was quite simple; with the assistance of a qualified attorney, they were able to complete and execute the necessary documentation.

Larry and Laura Weiner have been members of Temple Sinai for over 37 years. They chose Temple Sinai because of Rabbi Kranz, and the young, dynamic and progressive congregation he served. Their search was driven by the need to provide a formal Jewish education for their young children, David and Stephanie.

Time has flown by. As Temple Sinai has grown and flourished, so too has their family. They have celebrated numerous simchas with Temple Sinai and were instrumental in the growth of Sinai's preschool program which their grandsons proudly attended, flourished in and graduated from. And through times of sorrow, Larry and Laura shared that the Temple Sinai rabbis, "provided the emotional support and comfort that truly made a difference."

As they considered all the ways that Temple Sinai enhanced and impacted their lives, they said:

"The decision to create a legacy gift was an easy one. This decision was made not only because of all that Sinai has meant to us, and because there is now a third generation of our family that are a part of our wonderful synagogue, but the need to pass on all that Sinai has to offer must be ensured."



Having three generations featured in photos on the wall in the education wing is a source of deep pride to the Weiner family. Giving back so other families can have the same opportunity to be part of this community is the reason for their legacy gift. Larry and Laura hope their gift will be just one of many to ensure that Sinai will continue to be the special place that it is.



B'nei Mitzvah: May - November



Brady Baron

Son of Liann
Freeman and
Harold Baron



Riley Bodner

Daughter of
Jennifer and
Steven Bodner



Micah Dresdner

Son of Shelly
Dresdner and
Andrew Dresdner



Spencer Godwin

Son of Mindy and
Rodney Godwin



Amelia Gordon

Daughter of Katie
and Jonathan
Gordon



Micah Hertz

Son of Marci and
Jeffrey Hertz



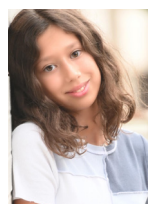
Benjamin Kaiser

Son of Marisa and
Michael Kaiser



Sadie Kitey

Daughter of
Meredith and Alan
Kitey



Sophia Lee

Daughter of
Meredith and
David Lee



Evan Levenberg

Son of Rebecca
and Rabbi Bradley
Levenberg



Estelle Levitt

Daughter of Alisha
and Chad Levitt



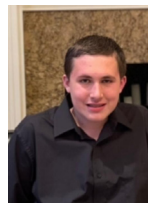
Sasha Mahl

Daughter of
Melissa and David
Mahl



Sophia Molinari

Daughter of Allison
and Jason Molinari



Seth Polekoff

Son of Valerie and
Jeff Polekoff



Hayden Printz

Son of Rachel and
Adam Printz



Lilah Scher

Daughter of Dawn
and Aubrey Scher



Emily Segall

Daughter of Leigh
and Michael Segall



Sydney Serotta

Daughter of Julie
and Jason Serotta



**Brandon and Emily
Shmal**

Children of Erin Conrad
and Daniel Shmal



Lena Solomiany

Daughter of Sabrina
Solomiany and Carlos
Solomiany





B'nei Mitzvah: May - November



Dylan Tanenbaum

Son of Emily and
Aaron Tanenbaum



Jolie Thaler

Daughter of Traci
Thaler



Mitzi Thaler

Daughter of Traci
Thaler



Sylvie Udell

Daughter of
Erica and Adam
Udell



Jacob Viente

Son of Lyndsie and
Adam Viente



Benjamin Weiner

Son of Alison and
Eric Weiner



Noa Zilber

Daughter of
Catherine and Yoav
Zilber

Exciting Changes to the Sinai Campus



Over the past 18 months, the addition of the stunning Lonnie Cooper Outdoor Chapel and the incredible Mercaz (playground) have helped to inspire a vision for how to take advantage of one of our greatest resources: our location. Nestled in the rolling hills and surrounded by greenery, it is hard not to be “wowed” by our campus and our outdoor space. And now, thanks to generous gifts by members of the Temple Sinai community, our home will soon utilize more of our outdoor space to augment our communal and individual journeys.

Temple Sinai Nature Trail

Thanks to the kindness of Joanne and Dorn Swerdlin, we will soon complete construction on a 1.5 mile nature trail weaving through the wooded area behind our building. This space is designed to inspire, with a choice of an easier path or one that is slightly more challenging due to the slope of the hill. Whichever route one chooses, there will be spaces for gathering and quotes to provoke thoughtful reflection along the way.

Rabbi Richard Lehrman Rabbinic Garden

Your generosity when we honored Rabbi Kranz and Rabbi Segal at the completion of their respective 50th and 25th years in the rabbinate succeeded not only in reaching the goal of our 2022 fundraiser, it also provided enough funding to seed the much needed renovations to the

existing Lehrman Garden. The Cohen family (Shirley, children Todd [Ellen] and Angie [Shawn] Janko) provided additional funds from the Stanley and Shirley Cohen Building and Grounds Endowment Fund to move from renovations to enhancements; this expansion is much more than a facelift. The space, which has greeted us as we arrive at the main entrance, will now be well equipped for outdoor gathering, receptions, and reflection. What a fitting tribute to our founding rabbi!

Together these projects will enrich the life of the congregation immeasurably! More information will follow with grand opening timelines, details of each newly developed space and opportunities to gather and celebrate together on our beautiful campus.

Because of You

Temple Sinai continues to be a synagogue community; unlike any other, because of you.

2021/2022
By the Numbers:



5500
Pounds collected for the 2022 annual High Holy Day food drive benefitting the Community Assistance Center



30

Students supported to attend trips to Israel and summer camps



\$ 86,000
In Scholarships awarded to Temple Sinai Preschool Students



86

New members welcomed into the Sinai community, each receiving a welcome package containing Shabbat candles from Sefat



70

Shiva Trays

Delivered by incredible Keshet volunteers



40

Keshet Care Meals



30

Unique Adult Learning Experiences

8

Bathrooms



20

Offices

Renovated to complete capital enhancements to our campus

A Preschool Scholarship Helped Their Children Thrive

Meet The Freedman Family



Rebecca and Michael Freedman, members of Temple Sinai since November 2019, have their daughters Brooke (3)

and Leah (1) enrolled in Temple Sinai Preschool (TSPS). Brooke was among the first infants TSPS welcomed when they opened an infant program. The Freedmans shared their story with us about their connection to Temple Sinai Preschool and the support scholarship funds have provided their family.

TS: Why did you choose Temple Sinai Preschool? How has it impacted your family?

Freedmans: We chose TSPS because of its amazing teachers and overall warmth from the first day we toured the school. The activities, the playground, the class decor and overall design wowed us. I felt

immediately at home and that my children would be so happy here.

TSPS has impacted our family in so many ways. Brooke, our oldest, can't wait to go to school every day. She is a dancing queen during Shabbat and comes home singing every song. Leah, our baby who is currently in the infant room, loves music class and all the fun art and games they do with her. The imaginative play, art and adventures our children have at Temple Sinai Preschool lights up my heart.

TS: What is your relationship to Temple Sinai and the preschool?

Freedmans: Temple Sinai has given our family a place to be together and celebrate meaningful Jewish holidays. Our daughters are learning so many customs and Jewish songs and prayers. It's so beautiful to see Brooke say hamotzi on Friday nights when we sit down together. We love Tot Shabbat and the weekend "Meet at the Mercatz" events. All of

the holiday family events are fun and Brooke always asks, "Will I see my friends there?!" The community is a tight group that supports one another and it makes our family feel loved and truly part of the Temple Sinai family.

TS: How have Sinai scholarships supported you throughout the years?

Freedmans: The TSPS scholarships we have received have impacted us in such an amazing way. After having Brooke, Rebecca took time away from working to be with her. She then spent a couple years trying to grow a new business. If it wasn't for the amazing scholarship program, it would have been extremely difficult to have figured out how to send both our children to Temple Sinai. We are so appreciative to the scholarship program as our children are thriving; they have smiles on their faces every day they go to preschool. Temple Sinai Preschool is truly a very special place.

Because of You



30

Weekend meals provided
at Powers Ferry
Elementary School
prepared weekly through
Backpack Buddies program



52

Shabbats celebrated
on one of three
Temple Sinai bimas



Exceeded our annual
fundraiser by:

225%

Enabling the remodeling of
Lehrman Garden

\$ 1.3 million

Increase in Endowment Funds*
through donations and bequests

*Temple Sinai Endowment Funds are restricted funds, established by donors
to support a specific purpose.

Give the Gift of Jewish Education



Because of you...

80 Temple Sinai students received financial assistance to continue and elevate their Jewish learning and experiences, **representing \$140,625 in scholarships awarded.**

This support could not be possible without the tzedakah of Temple Sinai members who prioritize the importance of Jewish education for future generations.

Every year, scholarships are made available for students enrolled in our Temple Sinai Preschool, Noar program, and for our youth to attend Jewish camps or participate in Israel trips – and the demand continues to grow.

At Temple Sinai we are committed to providing Jewish experiences for all of our children, never wanting finances to be a reason a child is unable to participate.



We hope this year will be the year you chose to **Give the Gift of a Jewish Education.**

There are many ways to support Temple Sinai youth scholarships:

- Make a donation to the Education Scholarship Special Fund which supports all activities at tinyurl.com/tsscholarship
- Participate in the Alef Fund (see page 10 for more information).

Consider starting a Scholarship Endowment Fund, which will provide funding for students to participate in Jewish life in perpetuity. Contact Shelly Dresdner sdresdner@templesinaiatlanta.org for more details.



ALEF Fund

A tax credit for you. An incredible Jewish education for our kids.

Receive a tax credit by directing your tax dollars to Temple Sinai Preschool and help make a Pre-K students Jewish education more accessible.

The ALEF Fund allows individual taxpayers and certain corporations to redirect their taxes to a scholarship fund for Temple Sinai Preschool Pre-K students. Both taxpayers and corporations may take a dollar-for-dollar tax credit for their contributions, making the program practically cost free to you.



Because of your generosity, Temple Sinai Preschool awarded \$117,000 in ALEF scholarship awards for the 2022 - 2023 school year.

You can designate your 2023 tax deductible dollars to Temple Sinai Preschool and learn more at www.aleffund.org.

Apply today!



**ALEF SCHOLARSHIPS
CHANGE LIVES.**

Tzedek Spotlight



December often compels us to reflect upon the year that has passed even as we make promises for change in the year to come. As many of us make resolutions, we hope that it will be a resolution of yours for 2023 to participate in any of the below initiatives aimed at addressing need in our greater community.

Sinai Family Shelter

Formerly known as Family Promise, this shelter provides needed lodging and meals for families experiencing situational homelessness. Volunteers are always needed, whether you can make a meal or give a few hours every few months.

Refugee Relief

When a number of Ukrainian refugees made their way to Georgia, our Refugee and Immigration Relief teams mobilized to provide much needed support and resources. And there is still more to do. Whether you have resources or time to give, we could use your help!

Backpack Buddies

Every other week on Wednesdays at 9:45 am, a group of Sinai volunteers packs meal kits for children in need at Powers Ferry Elementary. If you have time, we would love your help to make a difference in the lives of these children.

Environmental Awareness and Action Conversations (EAACs)

Our EAACs take place each month with individuals discussing opportunities to address the crisis impacting our climate and the subsequent effects of climate change on our community. Ideas launched in these conversations often turn into changes to our campus as well. This

group spearheaded our composting initiative, our Organic Oneg initiative, and they are driving our future adoption of solar panels. If you have ideas or even just concerns, these conversations are for you!

Community Assistance Center (CAC)

Every third Saturday of the month. Temple Sinai Volunteers are needed to help run the CAC food pantry mini market and Upscale thrift store at their Roswell Rd location. The CAC does amazing work to serve our community and needs your help!

And Much More!

From Blood Drives (**Save the date – January 8!**) to civic engagement to Habitat for Humanity, Reproductive Justice initiatives and the ways that we address antisemitism, there is much good that you can do just by getting involved!

Visit our Tzedek webpage to learn more: templesinaiatlanta.org/tzedek.

Transitions: July - October 2022

Welcome New Members...

Amanda Abes
Zayvion Austin
Benjamin Bernstein
Max Blafer
Hunter Blanket
Noah and Rocio Bogart; Zephyr & Zoe
Karen Borell
Alessandra Capriles and Harrison Ervin
Audrey Cunninghis
Phil and Jessica Davis; Liam, Olivia & James
Toni Dollinger
Seth and Loren Einstein; Chloe & Gavin
Emily and Lance Einstein; Avery & Lyla
Shelby Feinberg and Andrew Jagor
Bradley Freedman
Ian and Jessica Friedlander; Ben & Noah
Rebecca and Dustin Frissell; Oliver
Alexa and Mike Gevin; Andrew
Chad Girnun
Jake and Ilyssa Greenberg; Reese, Cooper, Emmy
Nancy and Michael Greenberg
Wendy Greenberg
Marc and Ilene Grossman; Miles & Gabriella
Cathy Goldstein
Adam and Lisa Henrich; Olivia, Isabella & Lily
Dori and Jeffrey Herald
Jon and Sara Hoffenberg; Gabe, Temma & Bennett
Eric and Jessica Jennings; Riley & Andrew
Max Kent; Oliver
Jim and Lori Kilberg
Rachel Krieger
Sarah and Danny Koenig; Madison
Zachary and Shannen Levin; Barrett & Brody
Jake Maziar and Stephanie Carlquist
Jason Margolies and Tamara Loschak
Kendra and David Matathia; Ava, Ethan, & Olive
Debra and Adam Meyer; Daphne
Meredith and Gary Myers; Maggie
Michal K. Moore
Maya Morgenstern
David and Julia Neckman
Susan and Howard Pelteson

Laura and Bryan Rader
Alyson Radetsky
Adriana Raxon
Dean and Alexa Ron
Sebastian Russell
Orly Schlessinger and Andrew Fisher
Lanie Schlessinger and Ethan Herenstein
Alissa and Daniel Schor; Madison Kedme
Janie Schwartz
Jeffrey and Cathy Schwartz
Heidi Senior; Hailey, Bryce, Serena, & Hannah
Stefani and Scott Silverman; Lucy, William & Chandler
Jared and Robyn Sobelson; Hannah
Rachel Sohnen
Galina and Lawrence Tobin; Theodore, Benji, Penelope
Talia and Holly Vogel
Kevin Wilensky

Mazel Tov to...

Peter Aman on being named the new Chief Administrative Officer for the Atlanta Police Department.

Lori and Gary Brochin on the marriage of her son Jeffery Hirsh to Stephanie Johnson

Ira Buchwald on the marriage of his son, Seth Buchwald to Nicole Bigman.

Lonnie Cooper on his marriage to Stacy Milon.

Andrea and Peter Cowan on the birth of their daughter, Dani Reese Cowan.

Morgan and Davis, z"l. Dolezal on the birth of their daughter, Jordan Carly Dolezal.

Ali and Marc Garfinkel on the birth of their son, Jett Wolfe Garfinkel.

Alexa and Mike Gevin on the birth of their son, Andrew (AJ) Gevin.

Erika Gonzalez and Matthew Reaven on the birth of their son, Asher Noah Reaven.

Jody and Gary Greenwald on the birth of their granddaughter, Alma Dani Greenwald.

Carol and Alan Grodin on the birth of their grandson, Noah River. Mazel Tov to parents, Seth and Caren Morganstern, and sister, Jaimie, as well.

William and Helene Joseph on the marriage of their son, Matt Joseph, to Hanna Franz.

Alan and Meredith Kitey for their son, Harry Kitey, winning the Jewish Hoops America Underclassmen of the Year award.

Sarah and Danny Koenig on the birth of their daughter, Madison "Maddie" Lenni Koenig, Mazel Tov to grandparents Beth and Steve Scheuer, and to Aunt and Uncle Robbie and Alex Hoff, as well.

Rick and Carolyn Lenner on the birth of their granddaughter, Gemma Ivy Lenner.

Nori and David Levine on the birth of their grandson, William (Will) Lewis Levine

Brenda Lichtenstein for her son, Brad, winning an EMMY for his documentary "when Claude got shot."

Debbie and Richard Pinsky on the marriage of their daughter, Rabbi Alexis Pinsky to Jaimie Krass.

Erin Pirkle on her marriage to Will Vaughn.

Michael Reznik on the marriage of his son, Jordan to Brenna Christensen

Jeremy Salzman and Taylor Landay on their marriage. Mazel Tov to Jeremy's parents, Beth Leaderman and Martin Salzman, as well.

Transitions: July - October 2022

Selma and Berney Shapiro on the birth of their granddaughter, Anna Rose Steine.

Leslie Vogel and **Louis Friedman** on the birth of their grandson, Graham Isaac Drury Friedman.

Molly and Charlie Weinberg on the birth of their son, Jack Thompson Weinberg.

Marcia and Stewart Weinhoff on the marriage of their daughter, Courtney Weinhoff, to Chase Markowitz.

Valerie Wender and Carl Capelouto on the marriage of their daughter Sarah Capelouto to Phil Cromack

Linda and Bob Wener on the marriage of their daughter, Andrea Wener, to Rob Schneiders.

Condolences to...

Marilyn Arkin on the passing of her father, Phillip Morgan.

Greg Bloom on the passing of his mother, Joanne Bloom. Condolences to grandchildren, Jeff, Brian, and Carly, and great-grandchildren, Marni and Blaire, as well.

Larry Bloom on the passing of his wife, Yvonne Bloom.

Susan Buchwald on the passing of her mother, Suzanne Goodman, and her father, Robert I. Goodman, Sr. Condolences to grandchildren, Eva and Sam Moss, as well.

Jay Cohen on the passing of his mother, Lynn Cohen. Condolences to grandchildren, Nathan and Mitchell Cohen, as well.

Elizabeth Cohn on the passing of her cousin, Judy Goodman Blane.

Morgan Dolezal on the passing of her husband, Davis Dolezal. Condolences to children, Blakeleigh and Jordan Dolezal, sister in-law Hilary Freedman, and grandmother Sheila Gerstein, as well.

Jason Evans on the passing of his uncle, Eli Evans.

Vicky Frysh on the passing of her mother, Rachel Azous Bejar. Condolences to grandchildren, Nicole and Jesse, as well.

Alex Gokhman on the passing of his mother, Soniya Gokhman.

Giselle Golden on the passing of her uncle, Antonio Nava.

Bob Golomb on the passing of his wife, Judy Golomb.

Scott Halpern on the passing of his father, Melvin Halpern.

Jason Karlin on the passing of his father, Ed Karlin. Condolences to grandchildren, Aaron and Max, as well.

Emily Kapit on the passing of her father, Dr. Arnold A. Schwartz. Condolences to grandchildren, Hali and Solomon Kapit, as well.

Sherry King on the passing of her daughter, Lisa Jo Holtz. Condolences to step-father, Cary King, as well.

Suzanne Klarer on the passing of her mother, Sandra Klarer. Condolences to grandson, Evan, as well.

Stephanie Lampert on the passing of her mother, Rita Tuvlin. Condolences to grandchildren, Danielle, Noah, and Madeline, as well.

Linda Lieberman on the passing of her husband, Milton "Milt" Tambor. Condolences to children, Scott and Sharon Lieberman, and grandchildren, Eric and Alyssa Liberman, as well.

Ed Mactas on the passing of his father, Leonard Mactas.

Martin Pollock on the passing of his sister, Eleanor Pollock Jacobs.

Adam Printz on the passing of his father, Peter "Pedro" Printz. Condolences to grandchildren, Connor and Hayden Printz as well.

Brenda Rappaport on the passing of her mother, Yvonne Teichman. Condolences to granddaughter, Heidi Lipman, and great-grandchildren, Sloan Lipman and Betsy Lipman, as well.

Susan Rothman on the passing of her son, Jeremy Rosenberg. Condolences to Michael, Lexi, and Reid Rothman, as well.

Jerel Rush on the passing of his brother, Devin Rush.

Sallie Samuels on the passing of her mother Katherine R. Samuels. Condolences to grandchildren, Eddie and Danny Samuels, as well.

Si Sater on the passing of his mother Dolores (Dee) Venzer. Condolences to grandchildren Stacie, Sami, and Stan, as well.

Ken Schick on the passing of his mother, Lisl Schick.

Jacqueline and Reed Schlesinger on the passing of their son, Miles Andrew Schlesinger.

Karen Shapiro on the passing of her mother, Natasha Freeman.

Betty Smulian on the passing of her husband, Jim Smulian.

Doug Spear on the passing of his father, John Spear. Condolences to grandchildren, Natalie, Marni, and Charlotte as well.

Berylann Strada on the passing of her sister, Veta Segal.

Transitions: July - October 2022

Brian Unell and **Robert Unell** on the passing of their father Gary Unell. Condolences to grandchildren and wife Renee Unell and brother-in-law Eddie Levin as well.

Brad Young on the passing of his father, Edward Young.

Contributions: July - October 2022

Allan and Melanie Nelkin Endowment Fund

in memory of

Jordan Butcher
by Melanie and Allan Nelkin

Arlene & Bruce Turry Fund

in honor of

David Turry
Sara Turry
Barbara and Ron Balser
Suzanne Turry
by Arlene and Bruce Turry

in memory of

Dennis Hoffman
by Arlene and Bruce Turry

Arthur & Elsie W. Heyman Endowment Fund

in celebration of

David Schoenberg
by Terri Heyman and Marc Cohen

in honor of

Marc Cohen
by Laurie and Bill Robbins

Berman Leadership Development Fund

in appreciation of

Temple Sinai
by Candy and Steve Berman

in memory of

Bernard B. Berman
Florine Brenner
Judith Abroms
by Candy and Steve Berman

Beth and Edward Sugarman Endowment Fund

in memory of

John Spear
Richard Sugarman
by Beth and Edward Sugarman

Beth Schafer Discretionary Fund in celebration of

Abigail Streger
by LaWana and Michael Streger

in appreciation of

Cantor Beth Schafer
by Robyn Degnan
Marci and Jeffery Hertz
by Mindy and Greg Bloom

in memory of

Devin Rush
by Gail and John Chandler
Barry Berman
by Betsey Gard

in honor of

Dylan Tanenbaum
by Emily and Aaron Tanenbaum

to thank

Temple Sinai
by Shelly and David Schwartzenfeld

Brian Waronker Memorial Fund for Addiction and Recovery

in memory of

Brian Waronker
by Paige and Mitchell Alterman
Edith Waronker
Jay Waronker
Aaron Lazarus
by Mitzi and Steve Waronker

Brotherhood Fund in memory of

Ed Karlin
by Kathy and Jason Evans
Gary Unell
by Jason Evans
Dan Loventhal
Chris Bose
Steve Pepper

Bunzl Family Cantorial Chair Fund in memory of

Richard Charles Bunzl
Frances B. Bunzl
by Suzanne Wilner

Cathy and Robert Sinsheimer Social Justice Endowment Fund

in celebration of

Robert Sinsheimer
by Lyn and Joel Epstein

Chesed Fund

in memory of

Jim Smulian
by Staci and Matt Brill

Congregant Relief Fund in memory of

Florence Esterman
by Elaine and Stephen Brill
Norma Goldman
by Elaine and Stephen Brill

Cultural Arts Fund

in memory of

Jim Smulian
by Shirley Michalove

Contributions: July - October 2022

Fred Ellman Culinary Enrichment

in memory of

Fred Ellman

Marjorie Weinstein

by Susan Ellman Zweig and Arnold Zweig

Deitch Family Library Resource Fund

in memory of

Charles Schwartz

Anna Deitch

Rochelle Deitch Eber

Ruth Schwartz

by Sara Deitch

Milt Tambor

by Beverly and Larry Brown

Early Childhood Fund

in memory of

Joe Gerstein

by Sheila Gerstein

praying for refuah sh'laymah for

George Scheer

by Jennifer and Kevin Leff

Education Scholarship Special Fund

in memory of

Judy Golomb

by Suzan and Gary Saidman

Ellen & Sanford Schwartz Torah

Learning Endowment Fund

in memory of

Lila Chapin

by Ellen and Sandy Schwartz

in honor of

Stacy Milon and Lonnie Cooper

by Ellen and Sandy Schwartz

Ellen and Paul Goldstein Keshet Fund

in memory of

Eleanor Jacobs

by Ellen Goldstein

Dick Isenberg

by Linda Baron

Paul Goldstein

by Ellen Goldstein

Ann and Mel Berss

Davis Dolezal

by Ellen Goldstein

Environmental Special Fund

in memory of

Samuel Geoffrey Begner

by Cory and Alan Begner

Ellyse & Warren Zindler Preschool

Fund

in memory of

Jerry Horowitz

David Seigel

by Ellyse and Warren Zindler

Barry Lewis

Sterling Zindler

Ed Karlin

by Ellyse and Warren Zindler

Gary Unell

by Ellyse and Warren Zindler

Davis Dolezal

Jim Smulian

by Marcia and Toby Brown

Family Promise

in honor of

Evan Levenberg

by Norma Gallow

Freeman Family Preschool

Enrichment Endowment Fund

in celebration of

Viki Freeman

by Hillary and Craig Levy

Geer Family Special Needs Education

Fund

in memory of

Harold F. Cohen

Leonard Scheck

Lynn Cohen

by Stacey and Ron Geer

Sharon Spitalney

by Marcia Nuffer

Irving B. Schoenberg Leadership &

Ethics Fund

in memory of

Dick Isenberg

Jeanette Hoffman

Ruth Kivett

Pearl Hoffman

by Ann and Irv Schoenberg

David Schoenberg

by Marcia and Toby Brown

Irving B. Schoenberg Leadership & Ethics Fund (Con't.)

in honor of

Jan Epstein

by Ann and Irv Schoenberg

General Endowment Fund

in memory of

Iyla Weiner

by Estelle Lieb

Joanne Bloom

by Bari and Rusty Love

Gail and Charlie Goetz

Robert Goodman

Suzanne Goodman

by Lori and Allan Peljovich

Dick Isenberg

by James McLendon

Eleanor Pollock Jacobs

by Marlene Schwartz

Mary Capeloto

by Allen Soden

Florence B. Robbins

by Nancy Hamburger

Linda Gorwitz

by Julie and George Stanwick

Lynn Cohen

by Michelle and Richard Young

Lori and Allan Peljovich

Harold Rainbow

by Nancy and Robbie Baron

Jerald Cohen

by Caren and Reece Cohen

William A. Schwartz

by Marlene Schwartz

Gary Unell

by Annetta Kornblum

Phillip Morgan

by Lori and Allan Peljovich

Edward Young

by Bruce Jackie

Jim Smulian

by Caroline and Rubin Piha

in honor of

Judy and Jeff Diamond

by Sam and Jack Levine

Stacy and Lonnie Cooper

by Tracy Carmony

Lynn and Lewis Redd

in appreciation of

Eric Lang

by Eda and Abraham Lang

Contributions: July - October 2022

Joy and Alan Greenberg Religious School Endowment Fund *in celebration of*

Joy and Alan Greenberg
by Shirley and Gary Bernes
Aaron and Jamie's wedding
by Sam and Natan Trief

Harvey White Teen Fund *in memory of*

Harvey White
by Sheila and Merrill Wynne

in honor of

Stephanie and Jerry Brochin
by Allen Soden

in celebration of

Mark Lichtenstein
by Judy and Arnold Rubenstein

Hineini Accessibility Fund *in memory of*

Phillip Morgan
by Michelle and Gary Simon

Jan & Warren Epstein Cultural Arts Endowment Fund *in memory of*

Dan Lincove
Joel Reish
Manuel Lincove
Jim Smulian
by Jan and Warren Epstein

in celebration of

Jan Epstein
by Barbara and Dick Planer
Bubbe and Zayde
by Lane, Marielle, and Jacob Epstein

in appreciation of

Temple Sinai
by Fran and Jerome Scher

in honor of

Irv Schoenberg
by Jan and Warren Epstein

Katinsky Fund *in memory of*

Arnie Katinsky
by Gail and Dennis Bates

Mark E Silverman Maimonides Award Endowment Fund *in memory of*

Mark E. Silverman, MD
Helen Dwane
by Diana Silverman
Jim Smulian
by Elaine and Jerome Blumenthal

Kesher Fund *in memory of*

Dick Isenberg
by Beth Pitt
Rita Tuvlin
by Sydney and Howard Katz
Miles Andrew Schlesinger
by Sarah and Adam Lazarus
Lisa Jo Holtz
by Julie and David Abes
Sandra Mislow
Bryan Schiffer
by Geri and Richard Fitterman
Robert Shaw
by Cathy Mendel and Alan Rothenberg
Lynn Cohen
by Stephanie and Justin Wyatt
Jerry Horowitz
by Sandra Mislow
Ethel Pearl
by Susan Eisenstein
Eleanor Schiffer
by Geri and Richard Fitterman
Veta Segal
by JoAnne Grunbaum
Marlene Schwartz
Beatrice Rothenberg
by Wendy and David Padrutt
Gary Unell
by Marlene Schwartz
Joe Capilouto
by Susan and David Capilouto
Davis Dolezal
by Anne Schwartz

in honor of

George Scheer
by Dorothy and Herman Lischkoff
Cary Rodin
by Anita and Mark Rottner

praying for refuah sh'laymah for

Margery Diamond
by Suzan and Gary Saidman

Maxine & Ronald Rosen Jewish Day School Fund *in memory of*

Milton Kahn
by Maxine and Ron Rosen

Lichtenstein Israel Fund *in celebration of*

Mark Lichtenstein
by Judy and Arnold Rubenstein
Bram Frankel
Anita Shpilberg
Karen and David Birnbrey
Michael Leven
Marilyn and Herb Goldstein
Susanne and Bruce Landau
Ivan Lichtenstein
Ellen Arnovitz and Michael Plasker
Goldie and Louis Bertone
Claudia and Hal Nowak
Rita and Michael LeVine
Fayne Frankel
Judy Zaban

in memory of

Gary Unell
by Brenda and Mark Lichtenstein

in honor of

Mark Lichtenstein
by Brooke Dickerson
Linda and Steve Selig
Cathy and Steve Kuranoff

Lillie Janko Event Fund *in memory of*

Selma Sax
by Nancy Wells
Deedie Jessup
by Gail and Dennis Bates
Lisa Neeman
Claire Balser
Nancy Hirsch
Murray Rozen
by Nancy Wells

Lippman Family Young Adult Endowment Fund *in memory of*

Yvonne Teichman
by Kimberly and Aaron Myerson

Contributions: July - October 2022

Louis and Esther Rodin and Arthur Sacks Memorial Fund

in honor of

Cary Rodin
by Shelley and Howard Shapiro
Erica Sitkoff and David Treewater
Germaine and Bruce Weinstein

Loventhal Scholarship Fund

in memory of

Ed Karlin
Jim Smulian
Edward Young
by Rita and Bill Loventhal

Merrill & Sheila Wynne Judaic Scholarship Fund

in memory of

Dick Isenberg
Nancy Abrams
Jerry Horowitz
Lillian White
Jim Smulian
Kenny Kaufman
Gary Unell
by Sheila and Merrill Wynne

Robert S. Janko Children's Enrichment

in memory of

Reny Raphael
Emily Bossin
by Lillie Janko

Sophia & Irving Hite Kesher Fund

in memory of

Miles Andrew Schlesinger
by Jeanne Boudreaux and David Jaye

Operating Enhancement Fund

in memory of

Dick Isenberg
by Donald Minsk
Pat and Karon Maguire
Hettie and Ed Stuart
Shirley Wender
Eleanor Pollock Jacobs
by Marcia Ball and Stephen Alterman
Laura Shir
Michelle Frye
Dee Venzler
by Anne Schwartz
Ruth Sajowitz
by Judy and Ronald Golden
Joanne Bloom
by Cindy and Howard Gibbs

Operating Enhancement Fund (Con't.)

in memory of

Dick Isenberg
by Jackie and Dick Needle
Carol and Michael Aarons
Hannah and Jerry Cooper
Marilyn Goldberg
Miles Andrew Schlesinger
by Judy Barkin
Phyllis and Roy Adilman
Judy Aspes
Sara and Mark Kanov
Milton Cohen
by Robyn and Jeffrey Cohen
Lena Miller
by Harriet and Robert Berlin
Rita Tuvlin
by Pam and Richard Litwin
Rhonda Povlot
Joanne Bloom
by Cathy and Alan Gottlieb
Linda Gorwitz
by Carolyn and Steve Dinberg
Dee Venzler
by Andrea and Stanford Levy
Albert Beerman
Bonnie Beerman
by Cynthia and Howard Gibbs
Lisa Jo Holtz
by Joanne and Dorn Swerdlin
Jim Smulian
by Fayne Frankel
Martha Berlin
Reuben Kessler
by Edrea and Robert Triff
Veta Segal
by Karen Malter
Jeremy Rosenberg
Gary Unell
by Etta Cohen
Deedee Jessup
by Lorraine Kroll
Belle Berlin
by Harriet and Robert Berlin
Jack Azus
by Victoria and Roger Frysh
Dorothy Tauber
by Susan and Harvey Tauber
Julius Jacob Horwitz
by Charlotte and Michael Horwitz

Operating Enhancement Fund (Con't.)

in honor of

Erwin Skibell
by Claire Magnes
Rachel Blumenthal
by Mildred and Martin Kwatinetz
Shelly Dresdner
Samantha Berinsky
by Tobyanne and Arnie Sidman

to thank

Jonathan Minnen
by Paul Lefkoff

in appreciation of

Temple Sinai
by Arleen and Terry Golden
Barbara Blumenthal and Josiah Wilcox
Temple Sinai
by Michelle Levy

in celebration of

Stacy Milon and Lonnie Cooper
by Eydie and Steve Koonin
Valerie Libby
by Germaine and Bruce Weinstein

praying for refuah sh'laymah for

George Scheer
by Michael Leff
Ronnie Winston
by Toni and Joel Adler

Robin and Adam Mayer Social Justice Fund

in memory of

Leonard Gottlieb
Maureen Gottlieb
Gene Perlman
by Cathy and Alan Gottlieb

Prayer Book Fund

in memory of

Morris Unterberger
by Annette Cash

Contributions: July - October 2022

Philip N. Kranz Learning Center Fund *in memory of*

Dick Isenberg
by Susan and Burt Kolker
Nancy and Mort Dimenstien
Barbara L. Cohen
Melvin Cohen
by Caryn and Jason Bernstein
Robert Robbins
by Nancy Hamburger
Harry Solomon
by Sharon and Roger Solomon
Dick Isenberg
by Rhoda and Philip Stahlman
Doris Weintraub
by Rachel Kubaryk
Stephen Alterman
by David Kuniansky

in appreciation of

Rabbi Kranz
by Betty Isenberg

praying for refuah sh'laymah for

Margery Diamond
by Laurie and Bill Robbins

Preschool Program and Scholarship Fund

in memory of

John Spear
by Randee and William Lieppe

Religious School Fund

in memory of

Iyla Weiner
by Liesl and Scott Dana

Rabbi Trief Discretionary Fund

in celebration of

Abigail Streger
by LaWana and Michael Streger

in memory of

Dee Venzer
by Robyn Degnan
Sandy Klarer
by Stacey and Gene Wypyski
Jeremy Matthew Rosenberg
by Susan and Howard Rothman
Kenny Kaufman
by Debbie and Eddie Levin

Rabbi Trief Discretionary Fund (Con't.)

in appreciation of

Rabbi Trief
by Barbara and Martin Pollock
Rabbi Trief
by Hilary and Michael Freedman
Alisha and Chad Levitt
Rabbi Trief
by Mindy and Greg Bloom
Sheila Gerstein
Marilyn and Jonathan Arkin

Rabbi Levenberg Discretionary Fund

in celebration of

Abigail Streger
by LaWana and Michael Streger
Evan Leaderman
by Beth and Adam Leaderman
Rachel and Jeffrey Bloom
by Mindy and Greg Bloom
Rabbi Levenberg
by Marcia Nuffer
Leslie and Stephen Walden

to thank

Rabbi Levenberg
by Bernard Tuvlin
Rabbi Levenberg
by Jill Rosen

in honor of

Lara and Adam Dorfman
by Meme and Krazz
Rabbi Levenberg
by Jane and Mark Cohen
Penina and Bruce Richards
Margo and Doug Diamond
Billie Greenberg and Family
Lynn and Jan Saperstein
Jacob Viente
by Lyndsie and Adam Viente

Rabbi Levenberg Discretionary Fund

in memory of

Dick Isenberg
by Mark and Lori Sanders
Bernard Davidow
by Linda and Robert Wener
Dee Venzer
by Joan and Gerald Berger
Rita Tuvlin
by Stephanie and Warren Lampert
Lisa Holtz
by Sherry and Cary King

Rabbi Levenberg Discretionary Fund (Con't.)

in memory of

Claude H. Cash
by Annette and Frank Joseph
Willy Spizman
by Jaime and Justin Spizman
Benjamin Schwartz
by Cheryl and Ted Schwartz
Deedie Jessup
by Betsy Goldsmith
Betty Robinson
by Stacey and Gene Wypyski
Gary Unell
by Ann and Bill Olevitch
Margo and Peter Savitz
Judy Golomb
by Dede and Robert Thompson
Jeremy Matthew Rosenberg
by Susan and Howard Rothman
Jim Smulian
by Robert Rickles

in appreciation of

Rabbi Levenberg
by JoAnne Grunbaum
Rabbi Levenberg
by Joyce and Victor Kaplan
Brenna Christensen and Jordan Reznik
Rabbi Levenberg
by Erika Gonzalez and Matthew Reaven
Rabbi Levenberg
by Jana Eplan Frankel and Craig Frankel
Mindy and Greg Bloom
Betsy Gard
Robert Golomb
Erin Vaughn
Sheila Gerstein
Susie Jessup

Richman Spiritual Relationship Endowment Fund

in memory of

Eleanor Pollock Jacobs
Wendy Pero
by Linda and Jerry Richman

in honor of

Cary Rodin
by Linda and Jerry Richman

Contributions: July - October 2022

Rabbi Segal Discretionary Fund *in memory of*

Dick Isenberg
by Stacy Sullivan
Peter Printz
by Nancy and Robbie Baron
Morris Rudin
by Selma and Berney Shapiro
Eleanor Pollock Jacobs
by Nancy and Robbie Baron
Lawrence Gilbert
by Randee and William Lieppe
Dee Venzler
by Evelyn and Milt Crane
Lynn Cohen
by Sari and Randy Alifeld
Dale Schwartz
by Susan Schwartz
Henry Rush
by Janet and Jerel Rush
Dee Venzler
by Robyn Degnan
Suzanne Goodman
Robert Goodman
by Anne Gillman
Shirley and Gary Bernes
Fannie Margolin
by Stacey and Gene Wypyski
Sam Mislow
by Laurie and Todd Greenberg
Jeremy Rosenberg
by Marcelle and Allan Oxman
Gary Unell
by Marcelle and Allan Oxman
Yvonne Bloom
by Marcelle and Allan Oxman
Judy Golomb
by Marilyn and Paul Lavietes
Yvonne Teichman
by Linda Baron

to thank

Rabbi Segal
by Helene and William Joseph

in celebration of

Abigail Streger
by LaWana and Michael Streger
Stacy Milon and Lonnie Cooper
by Lisa Perline

Rabbi Segal Discretionary Fund **(Con't.)**

in honor of

Rabbi Segal
by Joyce and Victor Kaplan
Stephanie Johnson and Jeffrey Hirsh
by Lori and Gary Brochin
Dylan Tanenbaum
by Emily and Aaron Tanenbaum
George Scheer
by Mimi and Dan Maslia
Sarah Capelouto and Phil Cromack
by Anna and Carl Capelouto

in appreciation of

Rabbi Segal
by Susan Schwartz
Barbara and Marty Pollock
Rabbi Segal
by Alisha and Chad Levitt
Rabbi Segal
by Leah and Drew Zucker
Margo and Doug Diamond
Mindy and Greg Bloom
Marlena Sherman and Evan Resman
Melanie and Scott Zucker
Lisa and Jay Cohen

Rabbi Ron Segal Endowment Fund

in appreciation of

Rabbi Segal
by Marci and Jeffrey Hertz

in memory of

John P. Peterken
by Faye Peterken

Ronald & Judy Cohen Facility **Improvement Endowment Fund**

in memory of

Judy Golomb
by Judy and Ronnie Cohen

Rose & Marvin Sugarman Library **Fund**

in memory of

Sidney Greenblatt
by Edward and Beth Sugarman

The Racial Justice Equity Fund

in celebration of

Emily Segall
by Jacki and Frank Zappala

Zucker Relational Community Fund *in celebration of*

Drew Zucker
by Sam and Natan Trief

Social Action Fund

in memory of

Milt Tambor
by Shirley Michalove

in celebration of

Jack Koransky
by Andrew Koransky

Second Helpings Fund

in memory of

Peter Printz
by Faye Peterken
Lisa Jo Holtz
by Lois Gurvey
Minna Goldsmith
by Betsey Goldsmith
Dee Venzler
by Lois Gurvey
Morton Harris
by Wendy and Paul Greenberg
Joe Silverman
by Harriet Simmons
Melvin Halpern
by Evelyn and Milt Crane
Esther Spielberger
by Wendy and Paul Greenberg

in appreciation of

Temple Sinai
by Maureen Cartoon

in celebration of

David Schoenberg
by Shirley Michalove

praying for refuah sh'laymah for

David Pruner
Salye Stein
by Harriet Simmons

Tikun Olam

in memory of

Veta Segal
by Shirley Michalove
Jim Smulian
by Abigail Hummel

in honor of

Lori and Allan Peljovich
by Pamela and Stuart Weizel

Contributions: July - October 2022

Sharon Fagin & Goldie V. Morris Music Enrichment Fund

in memory of

Sharon Fagin

by Sheila and Howard Fagin

Florence Goldstein

by Sandi Stine

in honor of

Jan and Warren Epstein

by Sheila and Howard Fagin

in celebration of

Shelly Dresdner

by Sheila and Howard Fagin

Tobyanne & Arnold Sidman Endowment Fund

in memory of

Alice Tarlow

by Tobyanne and Arnold Sidman

Sinai Refugee and Immigrant Relief Fund

in memory of

Harry Barkin

by Temme Barkin-Leeds

Jack Gay

Sam Gay

Herbert Gellhaar

by Nanci and Richard Gay

in appreciation of

Suzanne Simkin

by Jane Fishman and Leslie Walden

Stanley & Shirley Cohen Building & Grounds Fund

in memory of

Zachary Raider Cohen

Stanley B. Cohen

by Ellen and Todd Cohen

Susan & Howard Rothman Adult Program Fund

in memory of

Jeremy Rosenberg

by Jacob Wolofsky and Family

Susan & Jay Levitt Outreach Endowment Fund

in memory of

Arlyne Levitt

by Donna Wilensky and Jay Levitt

Jeremy Rosenberg

by Marci and Brent Suddeth

Janet Task

Lillie Janko

Leslie Landau

Taylor Greenberg Family Religious School Scholarship Fund

in memory of

Lillian Greenberg

Jim Smulian

by Arlene and David Taylor

Teen Israel Scholarship Fund

in honor of

Benjamin Kaiser

by Nancy and Phil Kranz

to thank

Lindsay and Ron Levin

by Sydnei Rubenstein

in celebration of

Mark Lichtenstein

by Lynne and Jack Halpern

Rabbi Kranz Institute for Jewish Learning Fund

in memory of

Laszlo Rosenthal

Helmut Joseph

by Annette and Frank Joseph

Sarella U. Grant

by Annette Cash

Robert Shaw

by Stacey Hader Epstein and David

Epstein

Peter Printz

by Susan and William Cabot

Erica Hecht

by Diane and Marc Hamburger

Jacquie and Harvey Sacks

Yvonne Teichman

by Glenda and David Minkin

DATED MATERIAL

Give the Gift of Jewish Education



Last year, **80 students** received financial assistance from Temple Sinai to continue and elevate their Jewish learning and experiences, **representing \$140,625 in scholarships awarded. And the demand continues to grow.**

At Temple Sinai, we are committed to providing Jewish experiences for all of our children, never wanting finances to be a reason a child is unable to participate.

We hope you choose to **Give the Gift of a Jewish Education.**

Donate Today tinyurl.com/tsscholarship



Every donor who makes a gift to this fund will receive a water bottle sticker as a thank you for your generosity!