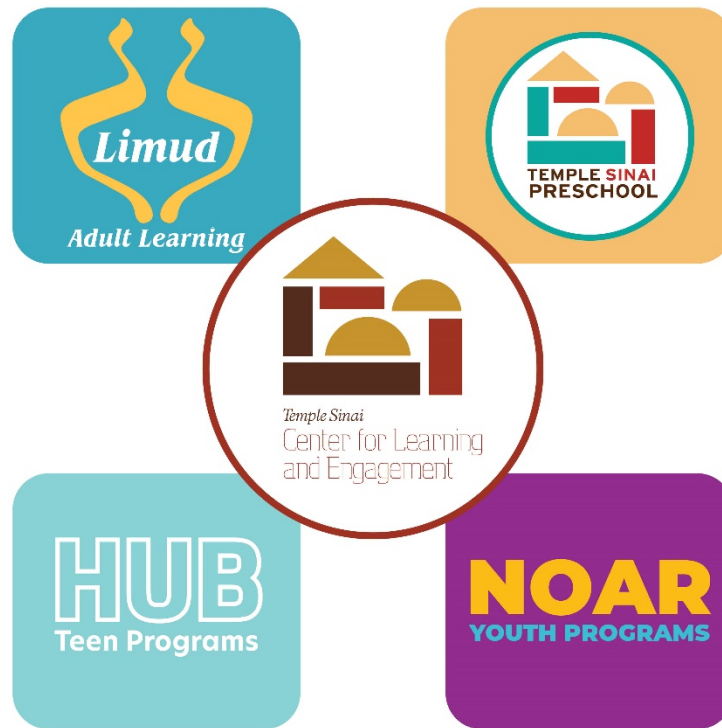


Temple Sinai's Center for Learning & Engagement 2021 - 2022 COVID-19 Guidelines



Temple Sinai and the education programs are committed to maintaining a safe and healthy learning environment for all of its participants. Temple Sinai's COVID-19 Task Force, in consultation with our panel of physicians, meets regularly to update all health and safety policies.

The COVID-19 Task Force takes into consideration recommendations established by the CDC, the AAP, and the preschool's licensing body, Bright From the Start Georgia, in determining the health and safety policies during times of health emergencies.

This handbook is a living document that will be updated in accordance with the latest evidence-based guidelines. We will inform you when any changes to our guidelines are made.

This version has been updated as of August 26, 2021.

Masks

Masks are required for all individuals ages 2+, regardless of vaccination status, when inside Temple Sinai. Masks are optional outdoors.

We recommend reusable cloth or disposable medical masks. Masks with vents or gaiter type masks are not allowed.

Temple Sinai Preschool: Students are encouraged to have a chain or lanyard to keep their mask accessible while moving between indoor and outdoor learning spaces.

Vaccinations

Temple Sinai has adopted a vaccination policy requiring all employees be vaccinated unless otherwise prohibited by applicable law.

HUB Teen Programs: Any teen serving as a Madrichim in our Noar program must be vaccinated. Any program that takes place overnight (including teen travel) will require proof of vaccination.

Daily Health Screening

We ask that staff, students, and program participants monitor for the following symptoms and remain home if ill: cough, shortness of breath, fever (temperature must be 100.3 degrees or lower), sore throat, headache, loss of taste/smell.

Temple Sinai Preschool: Parents will be required to sign their child in via the ProCare App each morning, answering any screening questions and logging their child's temperature each morning (Temperature to be taken at home and must be 100.3 degrees or lower without the aid of fever reducing medication in order to attend school. No other symptoms of illness can be present). Health and safety protocols will be communicated regularly reminding parents to keep children at home if they are ill.

Noar/HUB Programs: Health and safety protocols will be communicated with families regularly reminding parents to keep children at home if they are ill.

Parent/Adult Participation

Temple Sinai Preschool: Parents and caregivers are allowed to enter the building to drop off and pick up students. When dropping off or picking up students, parents and caregivers may walk children to their classroom door, but must remain in the hallway. All individuals ages 2+ entering the preschool facility must wear masks, regardless of vaccination status. At this time, we are not allowing parents and caregivers into the building for class participation (i.e. birthdays, class parties, mystery readers, etc.).

Noar/HUB Programs: Parents are allowed to drop off and pick up students in the building. All individuals ages 2+ entering the building must wear a mask, regardless of vaccination status. Parents are not encouraged to stay with the exception of Noar Tots programming.

All programs that involve families with children under the age of 12 will take place outdoors, weather permitting, until further notice.

Adult Learning: All adult learning sessions will be offered virtually and/or in person. All individuals ages 2+ attending inside the facility must wear masks, regardless of vaccination status. Any program that takes place outdoors, masks are not required.

Mixed Groups and School Wide Programs

Temple Sinai Preschool: Individual classes will join together with other students in the same age level throughout the day both during playground times and in the afternoons for those staying for plus and full day. There will be limited school-wide gatherings (Shabbat) that will take place outdoors in the Cooper Chapel. In the event of inclement weather, Shabbat will occur virtually in individual classrooms.

Noar Programs: Programs will occur outdoors as often as possible, as weather permits. If programs must be moved inside due to weather, classes will be spaced out as much as possible. *Chugim* (electives) will take place within grade levels until further notice to limit mixing of multiple groups. Any indoor activities will require masks for all individuals ages 2+, regardless of vaccination status.

Classroom Measures

All high touch surfaces are frequently disinfected throughout the day and the classrooms in the education building are thoroughly cleaned at the end of each day when preschool is in session and at the end of Noar and HUB programs.

Positive Case and Exposure

Please see the table below for steps to follow if a student or staff member tests positive for COVID-19 or is exposed to someone who has tested positive for COVID-19.

<p style="text-align: center;">Positive Test Student/Staff</p>	<p style="text-align: center;">Exposure Student/Staff</p>
<ul style="list-style-type: none"> • Let Temple Sinai (TSPS, Noar, or HUB) know of positive test immediately. • Individual who tested positive must quarantine for 10 days from day of positive test. • Individual with a positive test may return to program after 10 days if they have no symptoms and are fever free for 24 hours without medication. 	<ul style="list-style-type: none"> • If individual is vaccinated, they do not need to quarantine, but must monitor for symptoms. • If individual is exposed and not vaccinated, they must quarantine for 10 days or may return after 7 days of quarantine with a negative PCR test result taken on day 5, 6, or 7 after exposure. • Individuals may not return if waiting on test results.
<p>Household Member Tests Positive</p>	
<ul style="list-style-type: none"> • If individual is vaccinated, they may return to Temple Sinai after 5 days with a negative PCR test on days 3, 4 or 5 after household member tests positive. • If individual is unvaccinated, and can effectively isolate at home , they must quarantine for 10 days or may return after 7 days of quarantine with a negative PCR test result taken on day 5, 6, or 7 after exposure. • If individual is unvaccinated, and cannot effectively isolate at home, they must quarantine for 14 days. 	

Temple Sinai Preschool: We will notify preschool families in the affected class via Procure and email. A school wide email will be sent in cases that affect more than one class.

Noar/HUB Programs: Students, families will be notified via email if there is an exposure or positive case that affects their student’s class.

Food Safety

Temple Sinai Preschool: Students will have snack and lunch in their classrooms. We encourage families to pack snacks and lunches that are easy to open and easy for their child to eat independently as age appropriate.

Noar Programs: Programs that include food will take place outside until further notice. *Noar Sunday will not be providing or allowing snacks until further notice.*

Noar Hebrew: Students will continue to have pizza before the start of their program. All pizza lunches will take place outdoors.

HUB Teen Programs: Programs involving food will take place outside until further notice.

Temple Sinai Community Guidelines

As a part of the Temple Sinai community, we all have a role in keeping our community healthy and safe. By returning to school and programming, your family is committing to partnering with us to reduce the risk of exposure to COVID-19. Please know that even though we are all committed to the health and safety of our community, there is no amount of restrictions, guidelines, or safe practices that will remove 100% of the risk of transmission of COVID-19. We ask that all Temple Sinai families also:

- Be respectful to staff who are following and enforcing health and safety policies.
- Understand that we will be extra cautious with the illness policies.
- Continue to follow social distancing guidelines and restrictions ***outside of school***.
- Remain flexible and adaptable as the situation evolves.

These guidelines have been updated as of August 26, 2021.