

News & Information from Temple Solel

Pathfinder

TEMPLE
SOLEL



SEPTEMBER/OCTOBER 2019

ELUL/TISHREI/CHESHVAN 5780

Turning and Return, Together: Elul Excitement!



As the month of Elul approaches, the air turns crisp and the leaves begin to fall - in other places.

Here, the light changes slightly and the tides may shift, but the sense of turning and return sets in spiritually and emotionally. Students go back to school. Summer wanes. And, a mood of reflection sets in.

The High Holy Days are some of my very favorite moments every year. I love turning and returning to the themes of reflection and inventory. I love to savor the beauty of our shared humanity, while basking in the reality that we are all so foibled and flawed - individually and communally. When the Holy Days approach, they come slowly - with enough lead time to really marinate in our preparations. The month of Elul gives us weeks to set our hearts in the right direction, to focus our spirits and to ready our minds.

How, though?, you ask. Good question. Together. Together, we will explore the themes of this Holy Day season. You are warmly invited to join me in these preparations.

Throughout September, we will be offering deeper prayer explorations and meditations on Shabbat evenings, with a new siddur specifically designed for Elul! Also, **Elul Evenings** will take place in September (*see more information below*) and culminate in a profound **Selichot Experience** on the afternoon of September 21 (*see page 3*).

Also, during the month of September, we will bask in the beautiful prayers of a new Elul siddur - it is stunning and stirring, and I think you'll love it.

I very much look forward to this time with you all. We are always deeply enriched by one another's company during these sacred seasons. See you very soon!

Warmly,

Rabbi Alexis Berk



ELUL EVENINGS: A HIGH HOLY DAY PREPARATION WITH RABBI BERK

Tuesdays in Elul • 7:00-8:30 pm

Join us as the sun sets on Tuesdays in Elul to explore some High Holy day themes in conversation, contemplation, with a nice glass of wine and some light appetizers. It's just a very lovely way to prepare for the Tishrei season. Come to one or all Elul Evenings - your honesty and reflection will add so much to the conversation.

September 3 - A New Working Definition of "Sin": Intent vs. Impact

September 10 - The Book of Life: Who is the Author?

September 17 - Do People Ever Really Change? The Cycle of Reflection and Return

No fee. Visit www.templesolel.net to RSVP to one or all sessions. Questions? Contact Judy Bricker, jbricker@templesolel.net.

Temple Directory

Rabbi Alexis Berk

Senior Rabbi
aberk@templesolel.net

Cantor William Tiep

Cantor
btiep@templesolel.net

Rabbi David Frank

Rabbi Emeritus
dfrank@templesolel.net

Judy Bricker

Temple Administrator &
Programming Director
jbricker@templesolel.net

Ellen Fox

School Director
efox@templesolel.net

Craig Parks

Youth Director
solelyouth@yahoo.com

Anastasia Rollins

Director of Finance & Human
Resources
arollins@templesolel.net

Leslie Scheck

Director of Early Childhood
Education
lscheck@templesolel.net

Mayra Lopez

ECC Office Assistant
mlopez@templesolel.net

Jenny Luu

Accounting Intern
accounting1@templesolel.net

Jose Melgoza

Facilities Manager

Rocio Montelongo

Clergy Assistant
rmontelongo@templesolel.net

Enid Stechel

ECC Office Manager
estechel@templesolel.net

Dana Washofsky

Religious School Secretary
dwashofsky@templesolel.net

Toby Williams

AV Tech



Shulcloud Member Portal

For all Temple Solel Online Payments and Registrations: Visit <https://templesolel.shulcloud.com/> and remember you must log into the online portal, located in the upper right corner of the home page screen for all forms to appear. If you need help or have questions, please email accounting@templesolel.net.

Temple Solel of North San Diego County, Inc.

3575 Manchester Avenue, Cardiff by the Sea, California 92007

Office Phone..... 760.436.0654
Office Fax..... 760.436.2748
Early Childhood Center 760.944.1285
Early Childhood Fax..... 760.436.2748

Temple Solel is a Reform congregation dedicated to promoting Jewish community and continuity through study, prayer and acts of justice and loving kindness.

September Worship Schedule

Friday, September 6

6:49pm | Candle Lighting
6:00pm | Courtyard Casual Shabbat Service - See page 3.

Saturday, September 7

8:30am | Torah Study Led by Dr. Joel Lazar
Torah Portion: Shof'tim Deuteronomy 16:18-21:9
Haftarah: Isaiah 51:12-52:12

Friday, September 13

6:40pm | Candle Lighting
6:00pm | Courtyard Casual Shabbat Service

Saturday, September 14

10:00am | Shabbat Service with B'nai Mitzvah
Torah Portion: Ki Teitzei Deuteronomy 21:10-25:19
Haftarah: Isaiah 54:1-10

Friday, September 20

6:30pm | Candle Lighting
6:00pm | Erev Shabbat Service

Saturday, September 21 – No Morning Service

5:00pm | Selichot Experience
Torah Portion: Ki Tavo Deuteronomy 26:1-29:8
Haftarah: Isaiah 60:1-22

Friday, September 27

6:21pm | Candle Lighting
6:00pm | Erev Shabbat Service

Saturday, September 28

10:00am | Shabbat Service with B'nai Mitzvah
Torah Portion: Nitzavim Deuteronomy 29:9-30:20
Haftarah: Isaiah 61:10-63:9

Temple Solel Pathfinder

Published bi-monthly. Please send submissions by September 18, 2019 for the November/December Newsletter to Judy Bricker, jbricker@templesolel.net. We welcome story ideas and event photos from temple members.

Important Announcement

Due to the increase in postage costs, member's Yahrzeit reminder letters will be sent via email. If you have opted out of email Lifecycle announcements, you will continue to receive them via snail mail. You can personalize your options by accessing your Shulcloud account or contacting accounting@templesolel.net for assistance.

October Worship Schedule

Friday, October 4

6:12pm | Candle Lighting
6:00pm | Erev Shabbat Service - Shabbat Shuva

Saturday, October 5

10:00am | Shabbat Service with B'nai Mitzvah
Vayeilech Deuteronomy 31:1-31:30
Haftarah: Isaiah 55:6-56:8

Friday, October 11

6:03pm | Candle Lighting
6:00pm | Erev Shabbat Service
7:00pm | Teen Shabbat Jam

Saturday, October 12

10:00am | Shabbat Service
Torah Portion: Ha'Azinu Deuteronomy 31:11-32:52
Haftarah: II Samuel 22:1-22:51

Friday, October 18

5:54pm | Candle Lighting
6:00pm | Shabbat & Sukkot Blessings with Congregational Picnic & BBQ

Saturday, October 19

10:00am | Shabbat Service with B'nai Mitzvah
Torah Portion: Leviticus 22:26-23:44
Haftarah: I Kings 8:2-8:21

Friday, October 25

5:47pm | Candle Lighting
6:00pm | Erev Shabbat Service with Shabbat Unplugged Band

Saturday, October 26

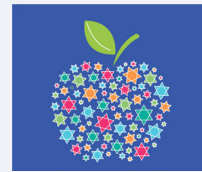
10:00am | Shabbat Service with B'nai Mitzvah
Torah Portion: Bereshit Genesis 1:1-6:8
Haftarah: Isaiah 42:5-43:10



Welcome New Babies

Joseph Gregory ("Joey") Sciolla, son of Tom & Christina Sciolla, brother to Victoria, born June 6, 2019.

High Holy Days @ Temple Solel



SELICHOT EXPERIENCE

Saturday, September 21
5:00pm

See page 3 for more information

EREV ROSH HASHANAH

Sunday, September 29
7:30pm

FIRST DAY ROSH HASHANAH

Monday, September 30
8:30am: Early Service
11:45am: Late Service
3:00pm: Young Family & Children's Service with New Babies Blessings (K-3rd grade)
4:30pm: Tashlich & Congregational Picnic @ Moonlight Beach

SECOND DAY ROSH HASHANAH

Tuesday, October 1
10:00am

KOL NIDRE

Tuesday, October 8
7:30pm

YOM KIPPUR

Wednesday, October 9
8:30am: Early Service
11:45am: Late Service
3:00pm: Yom Kippur Young Family & Children's Service (K-3rd grade)
4:00pm: Yom Kippur Afternoon Service
5:15pm: Yom Kippur Yizkor Service
5:45pm: Yom Kippur Concluding Service with Havdalah
6:15pm: Break-the-Fast

SUKKOT

Sunday, October 13
9:00am: Build the Sukkah

Friday, October 18
6:00pm: Shabbat & Sukkot Blessings with Congregational Picnic & BBQ

SIMCHAT TORAH

Monday, October 21
10:00am: Shemini Atzeret-Simchat Torah Service with Yizkor

Welcome New Members

May: Joel & Sally Shaps, Robert & Joan Kapell.

June: Stephen & Jennifer Scheer and daughters Kline & Kennedy, Dr. Michael & Sharon Drues.

(New members who joined in July/August will appear in the next issue.)

Upcoming Events



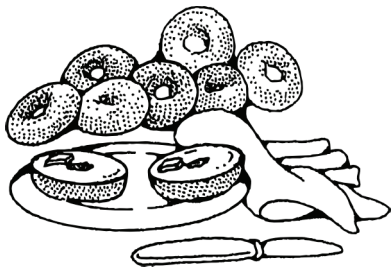
CELEBRATE END OF SUMMER @ TEMPLE SOLEL

Friday, September 6
6:00pm

Join us as we savor one another's company - and even offer blessings for membership anniversaries of the devoted Temple Solel community. Come for Courtyard Casual Shabbat Service and stay for our End-of-Summer BBQ.

\$10 per adult / \$5 children 13 & under.

Visit www.templesolel.net to RSVP. Questions? Contact Judy Bricker, jbricker@templesolel.net.



BROTHERHOOD BREAKFAST

Sunday, September 8
9:15am

Join us for Brotherhood's 2019-2020 Opening Event - **"Not Your Zayde's Brotherhood: Nostalgia and Next Steps"**. A Conversation with Rabbi Alexis Berk and the Brotherhood Leadership Team

Brotherhood serves Temple Solel by assisting with ushers (parking) for High Holy Days, Setup the Sukkah, cook latkes for the Religious School and run the Purim Carnival BBQ.

No fee for this event.

Please consider joining Brotherhood. Your \$36 annual dues help to offset the breakfasts and purchase kiddush cups for each Bar Mitzvah.

Sign up for Brotherhood today! Visit www.templesolel.net.

SELICHOT EXPERIENCE: AN EXPLORATION OF FORGIVENESS

Saturday, September 21

5:00pm

Film Screening "Forgiving Dr. Mengele" and Discussion.
Followed by Dinner.

7:30pm

Meditative and Musical Selichot Prayer Service - Melody and Poetry of the Season.

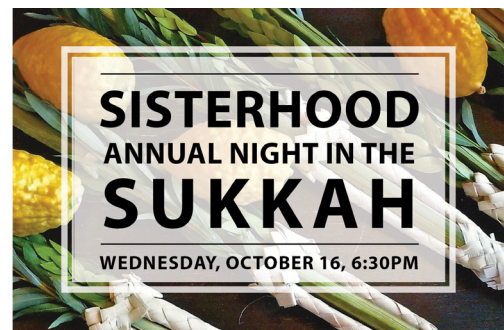
Dinner \$18 or bring your own vegetarian meal.

Visit www.templesolel.net to RSVP. Questions? Contact Judy Bricker, jbricker@templesolel.net.



Winner of the SPECIAL JURY PRIZE IN SLAMDANCE FILM FESTIVAL 2006, *Forgiving Dr. Mengele* is a bold and thought provoking documentary about a shocking act of forgiveness by Auschwitz survivor Eva Mozes Kor and the firestorm of criticism it has provoked. Eva and her twin sister, Miriam, were victims of Nazi doctor Josef Mengele's cruel genetic experiments; the film follows Eva's metamorphosis from embittered survivor to tireless advocate for reconciliation. Eva's

ideas about justice, revenge and the possibility of healing through forgiveness--as well as the passionate opposition from other survivors--become a window to a larger discussion of the many ways people define forgiveness.



SISTERHOOD IN THE SUKKAH

Wednesday, October 16
6:30pm

Join Sisterhood for our annual night in the Sukkah. Enjoy refreshments and schmooze with Rabbi Alexis Berk.

No fee for this event.

Please consider joining Sisterhood. Your \$36 annual dues support many programs around Solel including gifts to our Bat Mitzvah students. Visit www.templesolel.net to RSVP.



GATHERING SPARKS SOLAR PLANT IN HONOR OF RABBI DAVID M. FRANK

Temple Solel is installing rooftop solar for the entire campus. We anticipate a savings of \$40,000 per year in electricity, which will grow as electric rates increase. The project cost, including a new roof, is \$385,000. We have raised over \$235,000, with \$150,000 still needed to reach our goal.

Your contribution, regardless of amount, will be a lasting legacy to Temple Solel. Please participate today.

Visit www.templesolel.net and click on the green banner ad "Help Temple Solel Go Solar".

A Message from our New President



Has somebody that you respect and admire ever invited you to participate on a committee, lead a project, or simply volunteer a moment of time? Last year, Dawn Grossman telephoned one evening and asked me to succeed her as president of Temple Solel. With humility and pride, I accepted the honor for two vital reasons; Temple Solel has become a

loving and embracing second home to my family and because Dawn respectfully asked. The only choice was to answer in the affirmative.

Often times, we stand back, hesitate, and not actively offer our time – not because the mission doesn't resonate with us but because we question what skills we bring to the table. Will my contribution make a difference?

My message is fairly simple. Your contributions absolutely matter to the life and longevity of Temple Solel. My request is also fairly simple. If any board member, committee chairperson or friend makes the personal ask for you to become a leader or a worker bee, view the invitation as a complement and proudly say "yes." That person recognizes a unique attribute or talent and wants you to be part of the victory. Then imagine a time when you are the leader and make the call to a congregant asking them to join your team...a full circle connection!

We are embarking on one of the most exciting and energizing times in the life of our beloved Temple Solel–take an active role in our success.

Joanne Roberts
Joanne Roberts
President, Temple Solel

Shabbat Halicha Hike with Rabbi Berk & Dr. Weisgrau



Courtyard Casual Shabbat Service attracts multi-generations.

Rabbi Berk introduces herself to our congregants.

The Bubble Man @ Camp Solel

September 8! First Day of K-6 Religious School

Register Online
at www.templesolel.net

Click on Education and
"Click Here to Register"

2019-2020 Early Childhood Center Registration is Open!

Secure your spot today!

To Register visit
templesolelecc.com



ATTENTION BUSINESS OWNERS, SELF-EMPLOYED AND FAMILIES!

Build your business and
help us grow a vibrant
faith community!

Available ADVERTISING SPACE



Andrew Thompson from LPi, our bulletin printer, will, securing new ads for our bulletin. Please consider purchasing an ad, sponsoring a charity, or in Memory of a Loved One. Your participation makes our bulletin successful, and you attract customers!

BENEFITS OF ADVERTISING

- Local, targeted community advertising for **one full year, at one low price.**
- A FREE ad listing on parishesonline.com.
- FREE, professional ad design, and 4 free ad changes per year.

Andrew Thompson
303-887-7675 | athompson@4LPi.com



NOW OFFERING:

NUTRITION & HEALTH COACHING

Explore how to enhance your fitness
experience and achieve your goals.

30min/50min 1:1 sessions
Hayley Eglash

Goal setting, nutrition 101, reading food
labels, meal preparation, curb cravings,
mindset and motivation hacks, and more!

Call for a Free Consultation!
608-469-4355

B'nai Mitzvah

MAZEL TOV TO OUR
B'NAI MITZVAH STUDENTS



Pathfinder Tributes

Dawn Grossman -

In appreciation of the 2018/2019 Board of Trustees

\$18 Tributes are available to celebrate a special Simcha or just to say thank you. Tribute recognitions will be listed in the Pathfinder only and will not include notification to the recipient. Donations will support Temple Solel's General Fund. Visit www.templesolel.net and click on "Giving Opportunities", scroll down to "Pathfinder Tributes".

Get Involved

Moments in Time

We all know how good it feels when we walk into the sanctuary, having been warmly greeted. During the High Holy Days, our ushers, greeters, and parking volunteers provide warm greetings to our congregants and guests. They assist in directing people to parking spaces, prayer books, programs, kipot, tallit, and other worship items. They can also answer a variety of questions. If you would like to do more than attend the High Holy Day service, consider participating as a volunteer. We need ushers and greeters for all services, so no matter which service you attend, we can use your help at a time that would be convenient for you.

Sunday, September 29 Erev Rosh Hashanah

Monday, September 30 First Day of Rosh Hashanah, early and late morning services

Tuesday, October 8 Kol Nidre

Wednesday, October 9 Yom Kippur, early and late morning services; afternoon and concluding services

Contact Judy Bricker, jbricker@templesolel.net or 760.436.0654 x254.

We thank you in advance for your participation and support.

A complete list of our Moments in Time opportunities can be found on our website www.templesolel.net.



SPARKS OF SOLEL

TEMPLE SOLEL GREETERS

A wonderful opportunity to welcome congregants and guests to a Friday night Shabbat service by being a Temple Solel greeter. The job is easy. Welcome attendees with a hearty "Shabbat Shalom" and hand out the pulpit folders and song sheets. A half hour of your time from 5:30pm to 6:00pm is all it takes to make people attending services feel welcome and special.

You can serve as a greeter on your own or with members of your family including children 12 and over. Please help to make Temple Solel a warm and welcoming synagogue. To sign up, visit www.signupgenius.com/go/9040e4faea829a31-erev.

HINEYNU IS HERE FOR YOU



In times of need such as illness, bereavement, or other event, please remember that the Hineynu community is here to provide support. Our network of Temple Solel members can do a number of things including provide meals, making calls or visits, sending cards, and arranging for trees to be planted in Israel in memory of loved ones. We also send cards acknowledging happy events, such as weddings, births, or special honors, so let us know about your Simchas as well.

Hineynu encourages participation from all Temple members. To volunteer for any of its teams, please e-mail hineynu@templesolel.net. To request Hineynu services, please contact the temple office at 760.436.0654 ext 100. **If you need us, We Are Here!**

TEMPLE SOLEL GIFT SHOP

We operate a well-stocked, high-quality Judaica Gift Shop as a service to the congregation and community and a way of raising funds for the synagogue. You can find new and unique Judaica gifts and other fine crafts either made in Israel or by renowned Jewish artisans from around the world. The Temple Solel Gift Shop is a great way to support our temple while fulfilling your holiday and simcha needs.

The gift shop is open on Sunday mornings on religious school days from 8:30am - 12:30pm. On other days please call ahead to be sure the gift shop is staffed or make an appointment to shop.

Volunteers are always welcome! The more volunteers we have, the more hours we can be open. We are flexible and can fit your schedule. Please contact Judy Bricker, jbricker@templesolel.net or 760.436.0654 x 254 to make an appointment or to volunteer.



SOLEL SERVES

Meets at the Temple Solel kitchen to cook and to serve sixty plus meals for residents at Haven House, a homeless shelter in Escondido.

2019 Schedule: September 15, October 27, November 17 (Full). For each date, Solel Serves needs fifteen volunteers (*adults, teenagers, and, b'nai mitzvah students who need mitzvah project hours*). We prepare the meals at the Temple Solel Kitchen at 3:30pm, arrive at Haven House at 6:00pm, begin serving dinner from 6:15pm - 7:00pm. We also eat and play board games with residents. For more information, please contact Ellen Bramson, emb907@icloud.com or go to www.templesolel.net.

Contributions

WE GRATEFULLY ACKNOWLEDGE THE FOLLOWING CONTRIBUTIONS FOR MAY/JUNE 2019

*If your name was inadvertently left off our contribution list,
please contact Judy Bricker, jbricker@templesolel.net so we can correct for our next issue.*

OUR CLERGY

- Rabbi Berk's Discretionary Fund
- Cantor Tiep's Discretionary Fund
- Rabbi Frank's Discretionary Fund

OUR TEMPLE

- General Fund
- Building Fund
- Prayerbook Fund
- Shir Chadash Music Fund
- Tree of Life Leaf
(small-\$250; Large-\$300)
- Yahrzeit Plaque
(\$450 member; \$650 non-members)

OUR PROGRAMS

- Adult Education
- Charlotte Ida Tubis Memorial Scholar in Residence
- Chavurat Chesed (meal of condolence for mourners)
- Hineynu (assistance to Temple Members in need)
- Interfaith Shelter
- Israel Action Fund
- Library - Aaron Price Children's Fund
- Library - Alpert Mendelson Fund
- Social Action Fund
- Solel Serves Fund
- Stars & Stripes Fund
- Thanksgiving Baskets Fund
- Tzedakah Fund (crisis assistance to people in need)

OUR YOUTH

- Campership Fund
- Camp Simcha Scholarship Fund
- Early Childhood Center
- Hartman Leadership Program
- Rabbi Bohm Israel Scholarship Fund
(assistance to teens traveling to Israel)
- Religious and Hebrew School
- Youth Fund
- Matthew Hose Youth Fund

OUR CLERGY

Cantor Tiep's Discretionary Fund Sandy & Esther Abramowitz, in honor of Chris & Rebekah's Chamilton performance • Janet Abrams, in appreciation of Cantor Tiep • Robert Berkowitz & Nancy Lee, in memory of Elizabeth Hanson and in memory of Cecilia Tiep • David & Ellen Bernardi, in memory of Cecilia Tiep • Barbara Coffey, in memory of Lowell Klosky • Jim & Marti Eisenberg, in memory of Cecilia Tiep • Dr. Eric & Barbara Emont, in memory of Cecilia Tiep • Andrea Frimmer & Bob Jacobson, in memory of Cecilia Tiep • Dana & Julie Glazer, in memory of Mona Riedel • Richard & Rhona Gordon, in memory of Cecilia Tiep and in memory of Lowell Klosky • Julie Gusman • Dr. David & Laurie Guss, in honor of Hershel Sakulsky's 80th Birthday and in appreciation of our clergy • Adeline Hale, in memory of Cecilia Tiep • Stanley & Pamela Herskovitz, in memory of Cecilia Tiep • Itai & Melissa Hirsch, in memory of Cecilia Tiep • Dr. Christopher & Shana Hoolihan, in memory of Cecilia Tiep • Inez Kaufman, in memory of Cecilia Tiep, in memory of Florence Guss and in memory of Lowell Klosky • Dr. Richard & Eleanor Klein, in honor of Amy Glick's B'nai Mitzvah • Robert Kovalsky & Sharon Weintraub, in memory of Mona Riedel • Steven & Jodi Lasensky, in memory of Mona Riedel • Dr. Donald & Amy Miller • Michael & Syma Russell, in memory of Cecilia Tiep • Stan & Jane Schatt, in appreciation of the Music Series • Stephen & Linda Schechner, in memory of Cecilia Tiep • Dr. Marty & Tarra Schulman, in appreciation of Cantor Tiep • Robin Seigle, in memory of Cecilia Tiep • Arnold Tubis, in memory of Cecilia Tiep • Joel Zuieback & Linda Berezny, in memory of Beverly Zuieback.

Rabbi Frank's Discretionary Fund Jeffrey Ferber, in appreciation of Rabbi David Frank & Davida Shreiber • Andrea Frimmer, in memory of Florence Elgarten Kobran • David & Sasona Goodblatt, in memory of Rabbi Hayyim Kieral • Julie Gusman • Herman Family, in honor of Rabbi Frank's retirement • Charles McKeown, in appreciation of Rabbi David Frank for Erica McKeown's service • Norma Stern, in memory of Richard Stern, Sarah Zacks & Elizabeth Davidowitz • Howard & Charlotte Zuckerman, in honor of Rabbi Frank's retirement.

OUR TEMPLE

General Fund Jonathan Altman, in honor of Shabbat • Todd & Debby Buchholz • Ron & Beth Cates • Arthur & Deborah Cravets, in memory of Cordt E. Rose • Ian & Jenna Fasack • Douglas & Mindi Frankel • Stephen & Amy Garvin • Dr. Richard & Eleanor Klein, in honor of Amy Glick's B'nai Mitzvah • Dr. Stephen Goldstein, in honor of the B'nai Mitzvah of Jennifer Goldstein • Darryl & Deborah Gordon • Randy & Dawn Grossman • Itai & Melissa Hirsch • Dr. Christopher & Shana Hoolihan • Chris Jackson, in honor of Amy Glick's B'nai Mitzvah • Doug & Jamie Komen • Steven & Alexis Larky • Steven & Jodi Lasensky • Anatole & Holly Raif, in memory of Mona Riedel • Barry Raskin & Linda Olafson • Dr. Stuart & Joanne Roberts • Jon Segal, in memory of Shirley Segal • Larry Silverman, in memory of Lowell Klosky • Rabbi Adam & Dr. Rachel Wright.

Shir Chadash Music Fund Gaye Alperin, in memory of Cecilia Tiep • Dr. Michael & Sharon Druess, in honor of Adult B'nai Mitzvah of John Harland • Judith Rosenthal, in honor of the Adult B'nai Mitzvah of John Harland.

OUR PROGRAMS

Adult Education Gaye Alperin, in honor of Adult B'nai Mitzvah of Nina Rubinstein Doye McDaniel • Roberta Grobard, in honor of Dorothy Fasack & Mah Jongg lessons.

Charlotte Ida Tubis Memorial Scholar in Residence Adeline Hale, in memory of Lowell Klosky • Reba Oberman, in memory of Arlene Dinsky • Reba Oberman, in memory of Lowell Klosky • Martin & Janet Spatz, in memory of Arlene Dinsky • Arnold Tubis, in memory of Lowell Klosky.

Chavurat Chesed Sondra Earnstein, in memory of Darryl & Deborah Rund, Dorothy Blum & Herbert Bronson.

Hineynu Community Art & Eileen Ferber • Dr. Evan & Annette Friend • Bette Ross • Stan & Jane Schatt • Susan Gail Thomas, in memory of Ed Thomas.

Israel Action Fund Martin & Jennifer May, in memory of Arlene Dinsky • Howard & Charlotte Zuckerman, in memory of Arlene Dinsky.

Prayerbook Fund Bradley & Carole Kantor, in memory of Arlene Dinsky • Zona Pidgeon, in honor of Harold & Shirley Pidgeon's 60th anniversary.

Stars & Stripes Fund Arthur & Deborah Cravets, in memory of Max Olan • Arthur & Deborah Cravets, in memory of Hyman Kravetz • Hershel & Jessica Sakulsky • Joel Zuieback & Linda Berezny, in memory of Alfred Bernardi

Tzedakah Fund David & Ellen Bernardi, in memory of C. Bernie Sigalove.

OUR YOUTH

Early Childhood Center Randall & Belinda Harris, in memory Miriam Simon.

Religious and Hebrew School Fred & Kathy Scott, in memory of Don Fishstrom.

Youth Fund Stuart & Jennie Starr, in appreciation of Ellen Fox & Craig Parks.

Matthew Hose Youth Fund Suellen Hose.

SUSTAINING PROGRAM CONTRIBUTIONS

- Charlotte Ida Tubis Memorial Lecture Fund: Tubis Family
- Aaron Price Library Fund: Price Family Foundation
- Alpert Mendelson Library Fund: Mendelson Family
- Stephen Cohen Fund for Religious School Programming: Adele Rabin
- Stanley Canter Fund for Religious School Programming: Stanley Canter
- Hartman Leadership Program: Dr. Andrew & Magan Hartman
- 10th Grade Teen Journey Program: Harold & Shirley Pidgeon
- Matthew Hose Youth Fund: Jesse & Michelle Hose
- Thanksgiving Basket Program for Home-Bound Seniors: David Menashe

Circle of Honor

Our membership contributions do not cover Temple Solel's expenses. Without our generous members, we would be unable to fulfill our mission of building and sustaining our sacred community. Part of our mission is to enable those members who cannot afford their minimum membership contribution to remain a part of our community. Recognizing this, Temple Solel created a membership category called Circle of Honor. This membership level provides a mechanism for increased giving. This added revenue enables us to meet our operating expenses. If you are already a member of the Circle of Honor, Thank You for your generous additional support. If not please consider joining this group.

Friends

- Annual Membership Contribution included
 - High Holy Day Recognition and Honors
 - Recognition on Wall of Giving
- Donor Recognition and Thank You Events
 - VIP Gala Tickets (2)
- 10 Complimentary Tributes or Memorials

Sponsors

Inclusive of all that is mentioned above

- Reserved High Holy Day Seats (*immediate family*)
- 2 Additional High Holy Day Reserved Seats (*extended family*)
 - High Holy Days Recognition and Honors

Patrons

Inclusive of all that is mentioned above

- Annual Membership Contribution including Building Fees
 - High Holy Day Reserved Parking

Benefactors

Inclusive of all that is mentioned above

- 4 Additional High Holy Day Reserved Seats (*extended family*)
 - VIP Gala Tickets (4)
- 15 Complimentary Tributes or Memorials

Pillars

Inclusive of all that is mentioned above

- Annual Membership Contribution including Security Fees & Building Fees
 - 20 Complimentary Tributes or Memorials

For more information about joining the Circle of Honor and the benefits of each level, contact Judy Bricker, jbricker@templesolel.net.



CAR MITZVAH PROGRAM

Thinking about selling your car, boat, motorcycle, truck, or other vehicle? Donate it to Temple Solel instead! The Temple Solel Car Mitzvah Program provides funds that support our programs and services, and lets you receive a tax deduction when you itemize your return. For more information, call toll-free 877.537.5277 or visit www.donatingiseasy.org/donate-car-temple-solel.htm.



SUPPORT TEMPLE SOLEL

AmazonSmile is a program where Amazon donates 0.5% of the purchase price of eligible products to Temple Solel. On your first visit to www.smile.amazon.com, please select **Temple Solel of Northern San Diego** as your charitable organization to receive donations. AmazonSmile will remember your selection, and then every eligible purchase you make will result in a donation to Temple Solel.



Some of the 60+ members of Team Solel at the 2nd annual ADL Walk Against Hate.

True friendships begin @ Temple Solel

Joanne Roberts

PRESIDENT

Mindi Frankel

Melissa Hirsch

Steven Lasensky

VICE PRESIDENTS

Shana Hoolihan

SECRETARY

Barry Raskin

TREASURER

Dawn Grossman

PAST PRESIDENT

Ellen Bramson

Debby Buchholz

Ian Fasack

Brian Geffen

Doug Komen

Alexis Larky

Adam Rubin

Gary Woods

TRUSTEES

TEMPLE SOLEL

3575 Manchester Avenue

Cardiff by the Sea, CA 92007

NON PROFIT ORG.

U.S. POSTAGE

P A I D

ENCINITAS, CA

PERMIT NO. 147

Current Resident or

**We Are Going
Paperless!**

Please make sure that the email
address we have on file is current
and update. This provides a secure,
cost effective, time efficient and
environmentally responsible way for
us to deliver information.
Thank you for your support.

Alexis Berk

SENIOR RABBI

William Tiep

CANTOR

David Frank

RABBI EMERITUS

Kathy Robbins

FOUNDING CANTOR

Judy Bricker

TEMPLE ADMINISTRATOR/PROGRAMMING

Ellen Fox

SCHOOL DIRECTOR

Craig Parks

YOUTH DIRECTOR

Anastasia Rollins

DIRECTOR OF FINANCE/HUMAN RESOURCES

Leslie Scheck

DIRECTOR OF EARLY CHILDHOOD EDUCATION

TIKKUN OLAM @ TEMPLE SOLEL

Through September 22: Back to School Drive sponsored by Stars and Stripes Committee

Please consider donating school supplies for military children attending school on Marine Corps Base Camp Pendleton. List of supplies needed can be found on our website, www.templesolel.net.

October 1 – 9: Olim Youth Group Food Drive

Fill a grocery bag with non-perishable food items and bring to Temple Solel between Rosh Hashanah & Yom Kippur to support the Jewish Family Service Hand Up Youth Food Pantry and Encinitas Community Resource Center. Last year over 8000 pounds of food was donated.

November 2019: Thanksgiving Food Drive for Seniors

Temple Solel and Jewish Family Service Hand Up Youth Food Pantry team up to provide Thanksgiving food packages to isolated and lonely seniors. Your donations of canned goods and holiday treats will brighten the lives of many during the holiday season.

December 22 – January 4: Interfaith Rotational Shelter

Help provide shelter and hospitality at Temple Solel to persons who are homeless during the holiday season. There are innumerable ways to become involved to ensure the success of this program that Temple Solel is proud to have participated in for over 26 years. Contact Judy Bricker, jbricker@templesolel.net for additional information.