

OUR BRIT

A Covenant of Shared Responsibility

This is an agreement and social commitment to one another through promises, protocols, procedures and etiquette based on the guiding values and principles of VBS.



VALLEY BETH SHALOM



Back together, six feet apart.



VALLEY BETH SHALOM

Uv'chartem b'chaim

Choose life.



Jewish tradition dictates that our primary responsibility is to protect the life and well-being of all who are part of us -- students, teachers, parents, congregants, teens, seniors, guests, staff, workers, everyone who is part of VBS.

We will make decisions in consultation with County, State, and National Public Health officials, medical authorities in our own community and in strict observance of governmental directives. The well-being of our people is our foremost priority.



VALLEY BETH SHALOM

Asu li mikdash

Build a sacred place.

Our synagogue and school community exists to elevate lives through Torah, Avodah, Gemilut Hasadim, and Havurah.

We promise to find ways to accomplish this mission despite the challenges presented by the current crisis.

Arevim zeh l'zeh

Mutual Responsibility.

We, the VBS community, are partners in caring for one another and building a safe and healthy environment. This is our shared responsibility.

HEALTHY BEHAVIOR

Promote Behavior that Reduces Spread

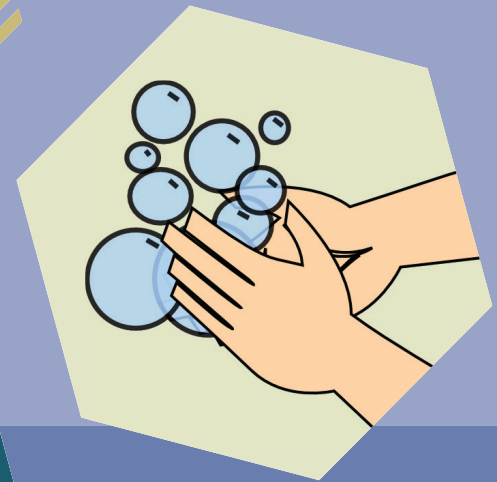
Stay home when appropriate

Wash hands regularly

Wear a cloth face covering

Maintain 6 ft. distance with fellow guests

Observe clear signs and messaging
on the VBS campus



keep 6 feet between you when possible



VALLEY BETH SHALOM

HEALTHY ENVIRONMENT

Maintain a Safe and Clean Campus

Clean and disinfect high-touch surfaces

No shared objects among children and staff

Sanitize all ventilation systems

Modify communal spaces

Create physical barriers at contact points



VALLEY BETH SHALOM

HEALTHY OPERATIONS

Implement Strategies to Protect Our Community

Implement health screenings and temperature checks for all congregants, staff, students and visitors

Provide accommodations for congregants, staff, students and visitors at higher risk for severe illness

Limit non-essential visitors and gatherings

Create small learning groups and keep them together

Stagger arrival and departure times



VALLEY BETH SHALOM

OUR SHARED RESPONSIBILITY

We are Committed to the
Shared Values in this Covenant

VBS COVID-19 Task Force Contact Points

Rabbi Ed Feinstein
Senior Rabbi

Orit Rappaport
Operations and Facilities Manager
VBS Pandemic Response Coordinator

Renee Kalmanson
Assistant ECC Director
ECC Pandemic Response Coordinator

Marcie Spetner, RN, BSN
School Nurse

Matthew Weintraub
Executive Director

Rabbi Deborah Schuldenfrei
Head of VBS Day School

Abby Andiman Mars
ECC Director

Keri Loventhal
ECLC Director



VALLEY BETH SHALOM

818.788.6000

vbs.org | info@vbs.org